

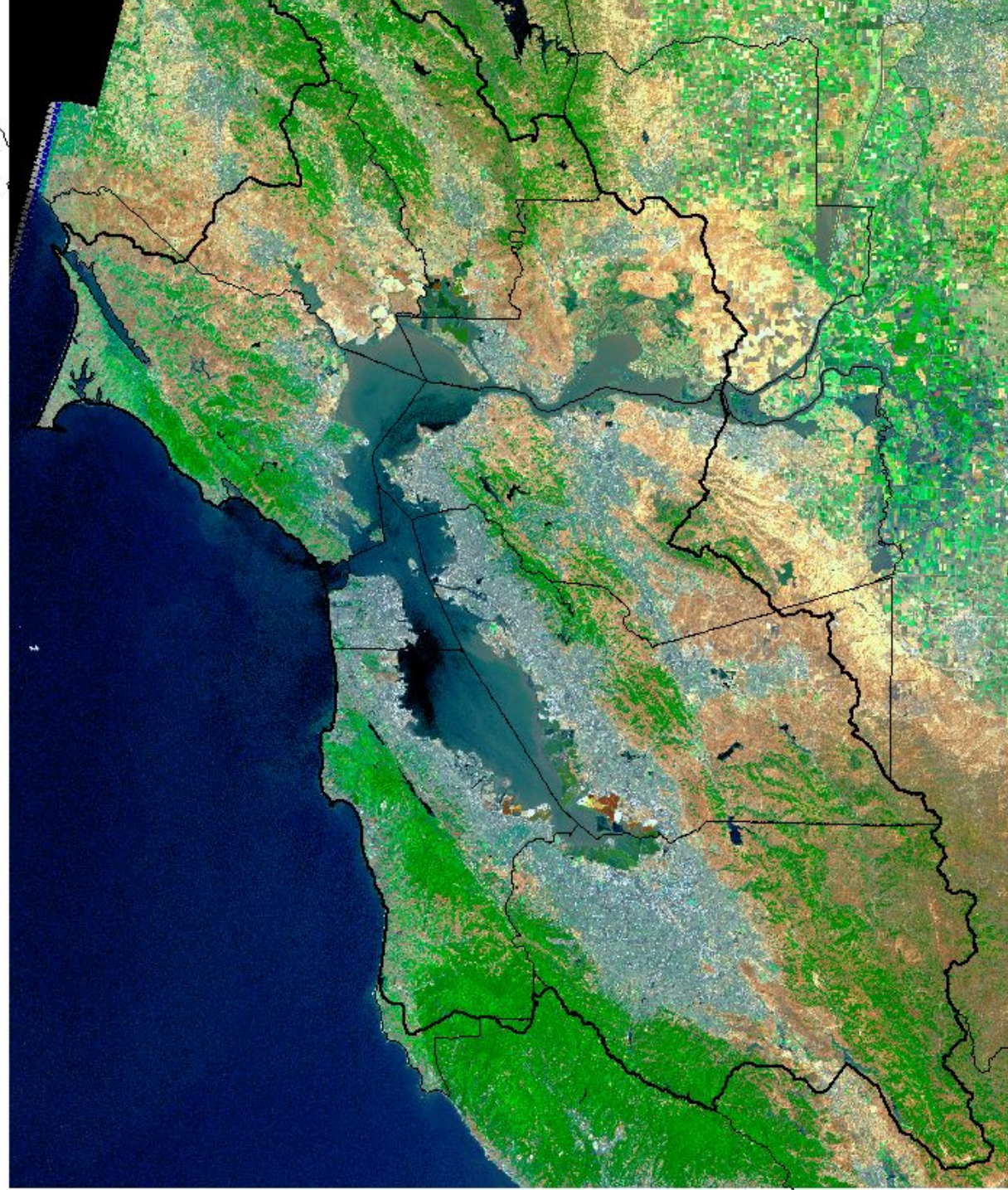
San Francisco Bay Regional Water Board Update



**Bruce Wolfe
Executive Officer
San Francisco Bay Regional
Water Quality Control Board**

Today's Presentation

- **Introduction to the San Francisco Bay Region**
- **Protection and Restoring Water Quality**
 - **Bay and Other Surface Waters**
 - **Wetlands and Streams**
 - **Groundwater and Public Health**



Our Mission

**To Preserve,
Protect, Restore,
and Enhance
Our Region's
Waters for the
Benefit of All**

Unique Aspects of Our Bay Area Region

- **San Francisco Bay Estuary is one of the most sensitive habitat areas in California**
- **The Bay Area is highly Urbanized**
- **Water enters the Bay from the RB5 jurisdiction through the Delta**
- **Small area, many people, high need for public participation**

Challenges

- **Protecting the San Francisco Bay Estuary from many stresses**
- **Controlling non-point source pollution in a diverse region**
- **Increased need for Inter-agency collaboration**
- **Additional resources dedicated to public participation**

Protecting Bay and Other Surface Waters

- **Permits for Point Source Discharges**

- **Sanitary Sewer Overflow Control Program**
- **Permits for Stormwater and Urban Runoff**
- **Long-Term Management Strategy**



Online Reporting of Sanitary Sewer Overflows


SSO Electronic Reporting Program - Microsoft Internet Explorer

File Edit View Favorites Tools Help

Back Forward Stop Refresh Home Search Favorites Media Print Copy Paste

Search Web New Toolbar Update Messenger Mail Bookmarks Yahoo! Games

Address https://www.r2esmr.net/ss0_menu.asp?user=cccsd



**California Environmental Protection Agency
SAN FRANCISCO BAY REGIONAL
WATER QUALITY CONTROL BOARD**

SSO Reports Selection Menu

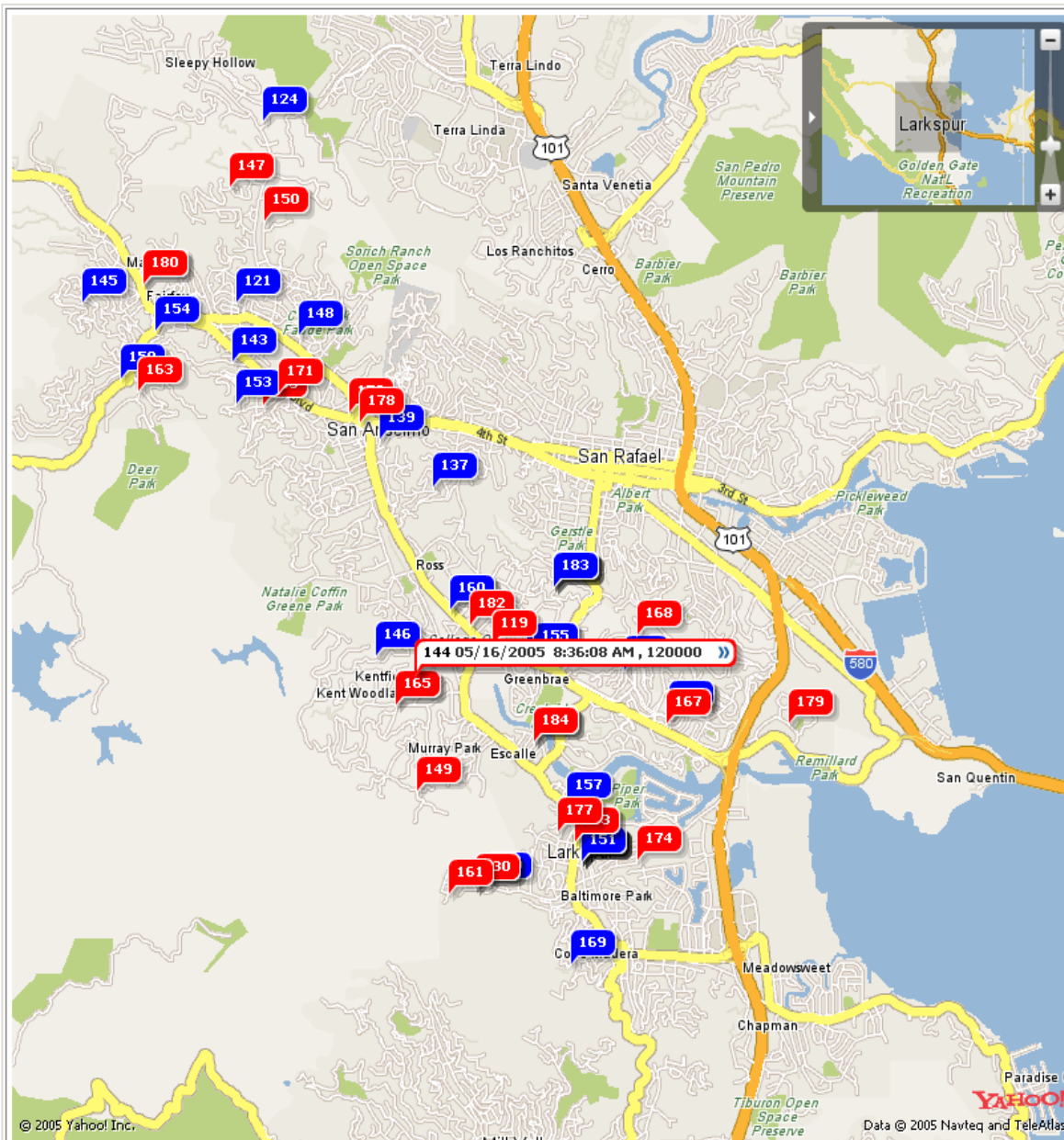
| | |
|---|---|
| <input type="button" value="SSO 24-Hour Report"/> | For reports meets the 24-hour reporting requirements* |
| <input type="button" value="Long-Form Report"/> | For SSOs greater than or equal to 1000 gallons |
| Tracking Number <input style="width: 60px;" type="text"/> | OR - To follow up on a previous 24-hour report, please enter the Tracking Number here and click on 'Long Form Report' |
| <input type="button" value="Short-Form Report"/> | For SSOs Less Than 1000 Gallons |
| <input type="button" value="List Recent Reports"/> | Click here For your Agency's recent reports |
| <input type="button" value="Log out"/> | |

*** 24-Hour Reporting Requirements:**

- (i) Any SSO that is 1,000 gallons or more, or
- (ii) Any SSO that may imminently and substantially endanger human health, or
- (iii) Any SSO that causes fish kills

Done Internet

Start Convert Microsoft P... SSO Elect... Microsoft E... C:\SSO eR... 2:32 PM



- 1) [3162 BURDECK DR, Oakland, CA](#)
- 2) [58 CALVERT CT, Oakland, CA](#)
- 3) [34TH STREET AND WOOD STREET, Oakland, CA](#)
- 4) [34TH ST AND WOOD ST, Oakland, CA](#)
- 5) [61st Ave. and Bancroft, Oakland, CA](#)
- 6) [9524 Thermal, Oakland, CA](#)
- 7) [Thermal Ave. and Cherokee Ave., Oakland, CA](#)
- 8) [52ND AVE. AND WENTWORTH AVE., Oakland, CA](#)
- 9) [3500 Mountain Blvd., Oakland, CA](#)
- 10) [1388 - e-8th street, Oakland, CA](#)
- 11) [8200 baldwin st., Oakland, CA](#)
- 12) [21st Street and Harrison, Oakland, CA](#)
- 13) [Frank O'Gamwa Baseball Field Upper Broadway, Oakland, CA](#)
- 14) [6758 Sims, Oakland, CA](#)
- 15) [1937 TIFFIN RD, Oakland, CA](#)
- 16) [4300 MOUNTAIN BLVD, Oakland, CA](#)
- 17) [4300 MOUNTAIN BLVD, Oakland, CA](#)
- 18) [4300 MOUNTAIN BLVD, Oakland, CA](#)
- 19) [4300 MOUNTAIN BLVD, Oakland, CA](#)
- 20) [4300 MOUNTAIN BLVD, Oakland, CA](#)
- 21) [4300 MOUNTAIN BLVD, Oakland, CA](#)
- 22) [7283 CLAREMONT AVE, Oakland, CA](#)
- 23) [82ND AVE & INTERNATIONAL BLVD, Oakland, CA](#)
- 24) [6977 PINEHAVEN RD, Oakland, CA](#)
- 25) [6737 ELEVERTON DR, Oakland, CA](#)
- 26) [473 63RD STREET, Oakland, CA](#)
- 27) [50 LARRY LANE, Oakland, CA](#)
- 28) [LAKESHORE AVE & MACARTHUR BLVD, Oakland, CA](#)
- 29) [LAKESHORE AVE & MACARTHUR BLVD, Oakland, CA](#)
- 30) [8001 WINTHROPE ST, Oakland, CA](#)
- 31) [1406 E25TH ST WAY, Oakland, CA](#)
- 32) [7837 BANCROFT AVE, Oakland, CA](#)
- 33) [2465 E. 22ND ST, Oakland, CA](#)

Yahoo Map: SSO Reports from Marin County SD1

Protecting Wetlands and Streams

- **Wetland Fill Pressure Low**

- **Stream Fill Pressure High**

- **Stream Protection Policy**

- **Hydromodification Management Plans**



Protecting Ground Water & Public Health

- Superfund Cleanups
- Department of Defense Site Cleanups
- Brownfield Site cleanups
- Center for Creative Land Recycling Report



Restoring Water Quality

- Bay and Other Surface Waters
- Wetlands and Streams
- Groundwater



Restoring The Bay

- Pollution Prevention
- Baywide TMDLs
- Diverting Urban Runoff

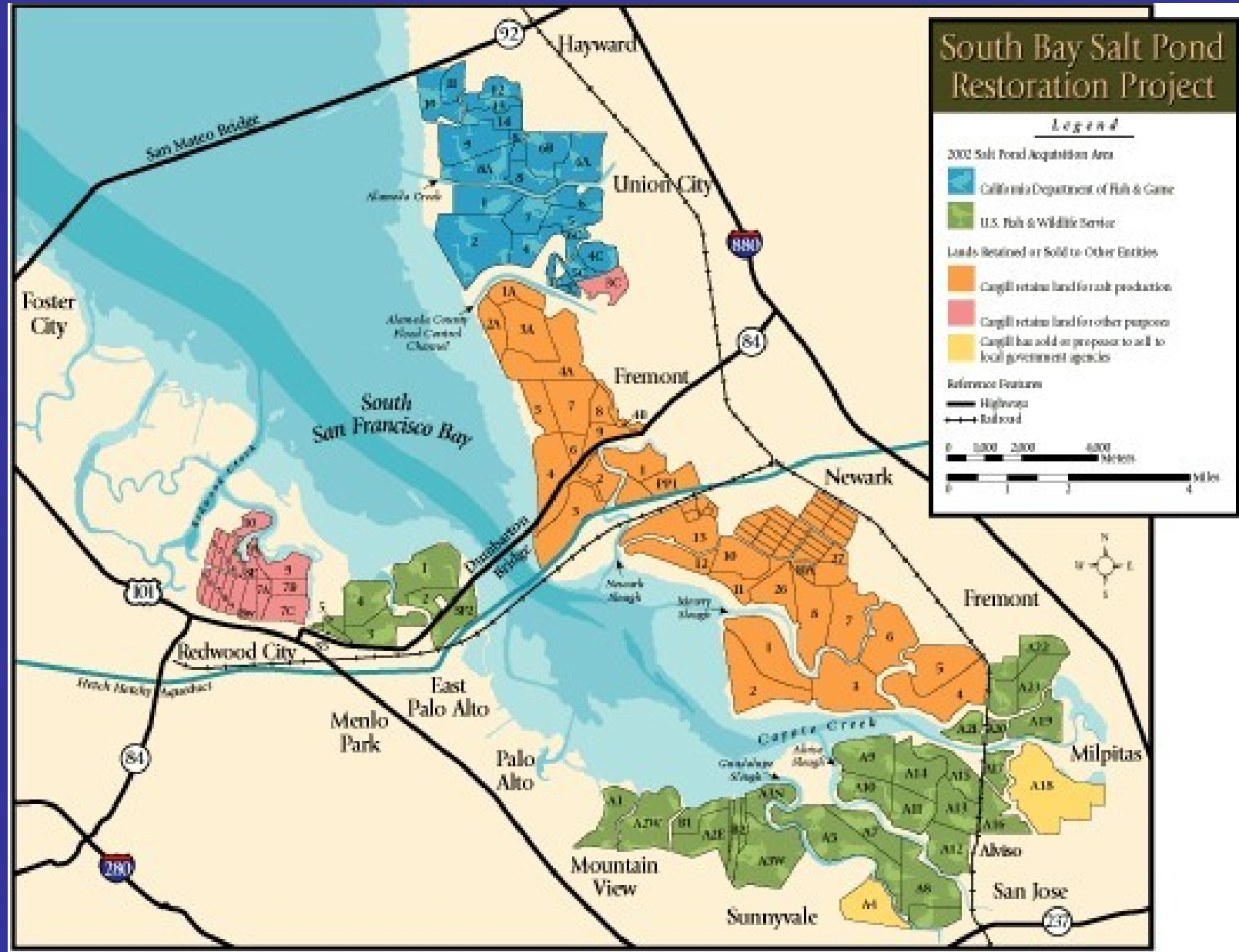


Restoring Wetlands

- **South Bay Salt Pond Restoration**
 - Initial Stewardship Plan
 - Final Alternatives
- **Hamilton Wetland Restoration Project**
- **Peyton Slough Restoration**



South Bay Salt Ponds Restoration



Hamilton Cleanup & Restoration



Restoring Contaminated Groundwater Sites



Before



After

- Cleanup of Soil and Groundwater
- Allows for Economic Development
- Can reduce environmental impacts of urban sprawl

Restoring Mine Sites



Successful Mine Cleanup



Downstream mining waste deposits

Recent Accomplishments

- **Non-regulatory Update of the Basin Plan**
- **Board approval of Tomales Bay Pathogen and Pesticide TMDLs**
- **On-line reporting system for sanitary sewer releases & POTW self-monitoring reports**
- **Wetland restoration**
- **Groundwater cleanup**

On-going Needs

- **Support of TMDLs and permitting**
- **Support of cleanup activities, including public participation and risk assessment**
- **Statewide resource realignment**
- **CIWQA support**

Come Visit San Francisco Bay

