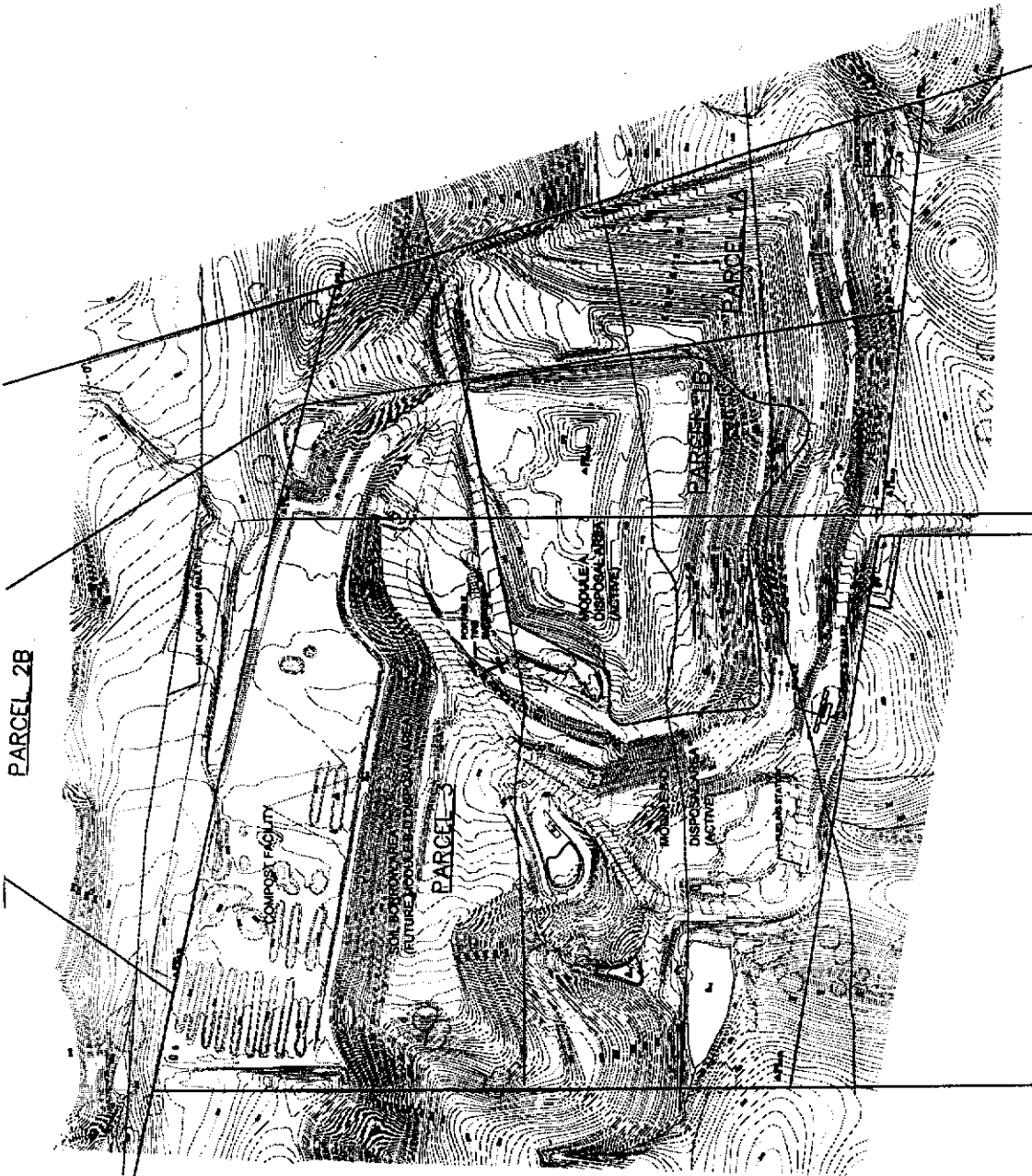


Source: September 2003/August 2004 Joint Technical Document

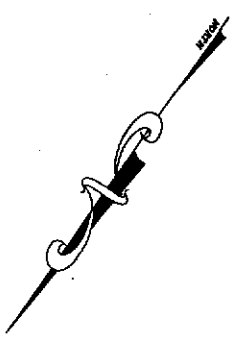
**Pacheco Pass Class III and Inert Waste Landfill
 Gilroy, California
 Site Location Map**



Figure 1



PARCEL 2B



- LEGEND**
- EXISTING 2' CONTOUR
 - EXISTING 10' CONTOUR
 - FINAL WASTE BOUNDARY
 - FUTURE WASTE BOUNDARY
 - EXISTING FENCE
 - MOBILE A UNIT
 - FAULT TRACE
 - EXISTING ROAD/DRIVE
 - PROPOSED ROAD/DRIVE
 - PARCEL BOUNDARY

NOTES
 (1) TOPOGRAPHIC MAP BASED ON AERIAL SURVEY
 CONDUCTED BY AGRO - GEODETIC CORP ON
 MARCH 9, 2004

Source: September 2003/August 2004 Joint Technical Document



**Pacheco Pass Class III and Inert Waste Landfill
 Gilroy, California**

Parcel Map

Figure 2



Source: September 2003/August 2004 Joint Technical Document

**Pacheco Pass Class III and Inert Waste Landfill
Gilroy, California**

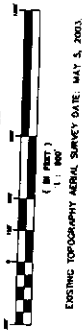
Modules B-D Excavation & Grading



Figure 3



GRAPHIC SCALE



EXISTING TOPOGRAPHY AERIAL SURVEY DATE: MAY 5, 2003.

LEGEND

- EXISTING 2' CONTOUR
- EXISTING 10' CONTOUR
- EXISTING FENCE
- EXISTING ROAD/TRENCH
- MODULE A LIMIT
- FAULT TRACE
- GROUNDWATER ELEVATION CONTOUR

- EWP EXPLORATORY BOREHOLE
- EWP EXPLORATORY BOREHOLE WITH WATER SAMPLE
- GROUNDWATER PRESSUREMETER
- GROUNDWATER DETECTION MONITORING WELL
- PROPOSED GROUNDWATER DETECTION MONITORING WELL
- GROUNDWATER CORRECTIVE ACTION WELL
- LANDFILL GAS PROBE
- LANDFILL GAS/EXTRACTION WELL
- LANDFILL GAS/EXTRACTION WELL
- LEACHATE MONITORING/EXTRACTION WELL
- LEACHATE SUMP RISER LOCATION
- DECOMMISSIONED OR DAMAGED WELL
- LEACHATE/COMBINATION COLLECTION STORAGE TANK
- STORMWATER MONITORING POINT



APPROXIMATE DIRECTION OF GROUNDWATER FLOW

NOTES:

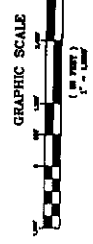
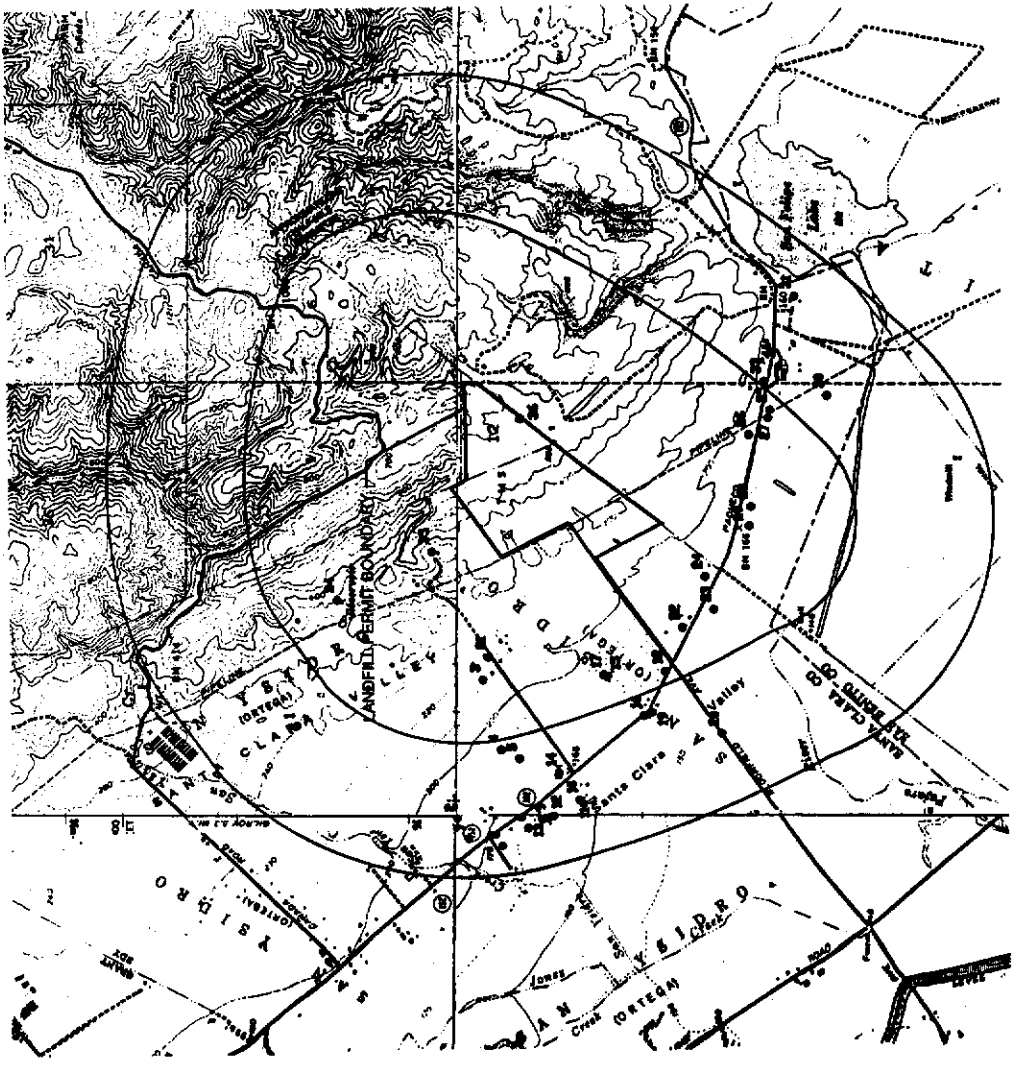
- 1) GROUNDWATER CONTOURS ARE OBTAINED FROM TESTS AND RECORD DATED 2003. SEE ANNUAL MONITORING REPORT BY CH2M HILL, JULY 2003.
- 2) GROUNDWATER DETECTION MONITORING WELLS E-20 THROUGH E-23 WERE CONSTRUCTED AS PART OF CONSTRUCTION OF MODULE A-2 LEACHATE SYSTEM. EWP EXPLORATORY BOREHOLES WERE CONSTRUCTED FOR FLOWING.

Source: September 2003/August 2004 Joint Technical Document

Pacheco Pass Class III and Inert Waste Landfill
 Gilroy, California
 Monitoring Facilities and Groundwater Contour Map

Figure 4





- LEGEND
- PERIMETER MARKER
 - LANDFILL PERMIT BOUNDARY
 - WELLS WITHIN ONE MILE

NOTES

THIS MAP, 1995 USGS TOPO MAPS PROVIDED BY CALIFORNIA STATE INFORMATION LIBRARY, DMS NUMBERS D12724, D12725, D12726, AND D12727.

WELL LOCATION SOURCE: EIA WASTEWATER PRELIMINARY DESIGN AND POST-CLOSURE MAINTENANCE PLAN, PACHECO PASS WASTE TREATMENT, SANTA CLARA, CA, MAY 1997.

Source: September 2003/August 2004 Joint Technical Document

Pacheco Pass Class III and Inert Waste Landfill
 Gilroy, California
 Wells Within One Mile of Landfill

Figure 5

