

**State of California  
Regional Water Quality Control Board, Central Coast Region**

TO: File

FROM: William Arkfeld <sup>WA</sup>

DATE: August 12, 2004

SUBJECT: Filice THP Inspection of STA on August 11, 2004

On August 11, 2004, Donna Bradford (Santa Cruz County), Gary Paul, John Filice and Bill Arkfeld inspected the "Special Treatment Area" (STA) downstream of Crossing I on the Filice THP. We inspected the flowing creek channel, the very gently sloped area surrounding the creek and the area where the creek transitions from an unconfined to a confined channel.

**FINDINGS:**

All the skid trails were appropriately placed within the STA. All of the skid trails end near the edge of STA except one (as shown on the site plan provided during the inspection and included in the THP).

Canopy within the STA will be at least 50% except near the north and south edges of STA.

No in lieu practice is proposed.

The creek channel was slowly head cutting at the points where the channel transitioned from confined to unconfined characteristic. Ground water was seeping from the toe of one of the head cut areas. At least two trees were observed marked for harvest next to a head cut area such that there harvest could have an adverse impact.

**RECOMMENDATIONS**

- 1) Avoid disturbing soil in the vicinity of any head cuts.
- 2) Unmark two trees that will disturb an adjacent head cut as agreed to during the PHI.
- 3) Establish 50 foot-no-cut-zones around mapped stream confluences in the STA in the western portion of the STA.
- 4) Include the stream confluence area as a photo point(s) to assess the rate of head cutting over time. Also include the western most skid trail (i.e., the skid trail that is closest to the head cut area) as photo point(s). Photo points will be added to the proposed Monitoring and Reporting Program.

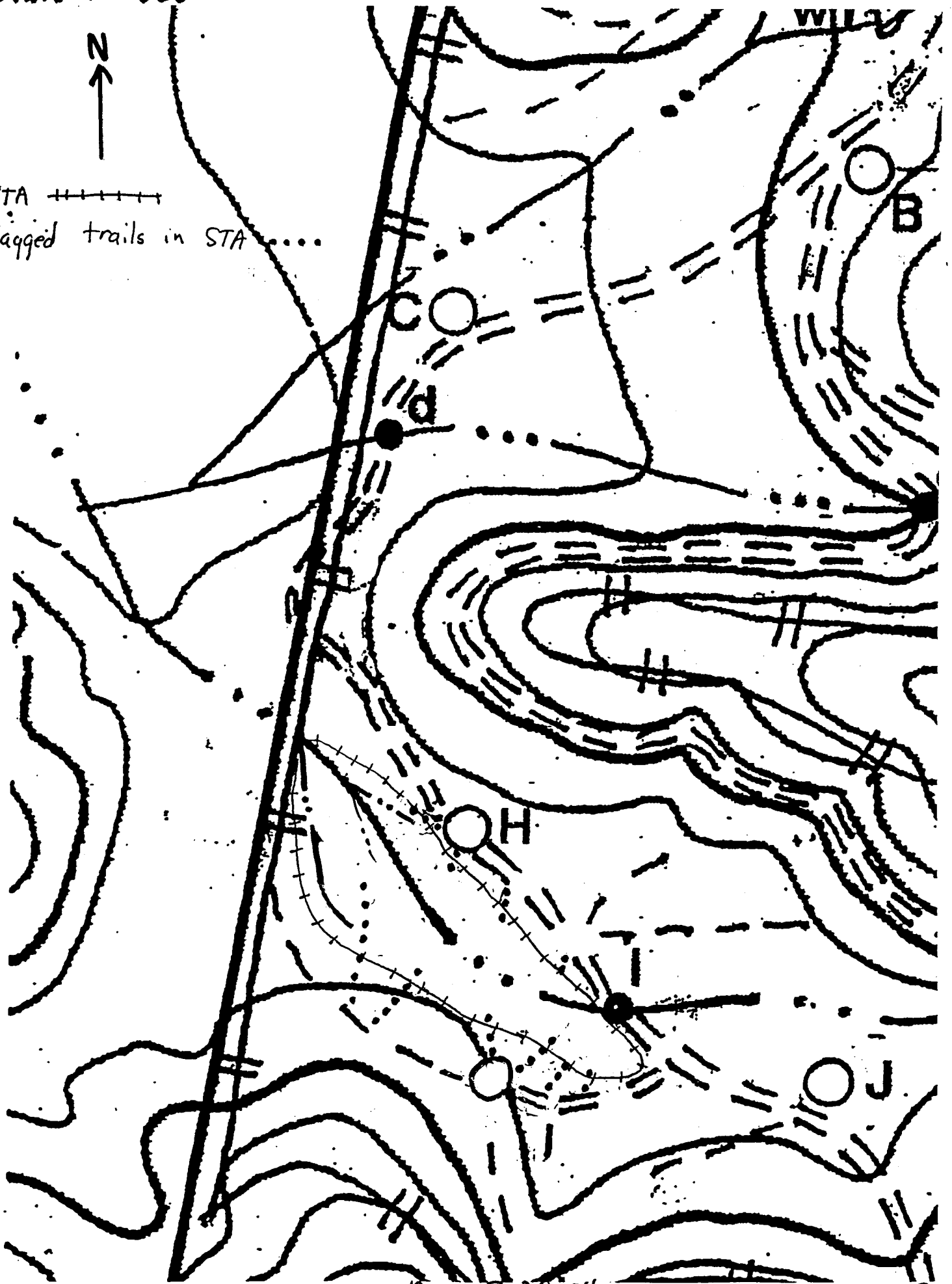
Gary Paul and John Filice agreed to these recommendations on August 11, 2004. The THP will be modified to reflect these changes.

Scale 1"=220'



STA ++++++

Flagged trails in STA .....



Map 7-20-50