

**CALIFORNIA REGIONAL WATER QUALITY CONTROL BOARD
CENTRAL COAST REGION
81 Higuera Street, Suite 200
San Luis Obispo, California 93401**

WASTE DISCHARGE REQUIREMENTS ORDER NO. R3-2002-0019
Waste Discharger Identification No. 3 401014001

For

**LOS ROBLES MOBILE HOME ESTATES
SAN LUIS OBISPO COUNTY**

The California Regional Water Quality Control Board, Central Coast Region (Board), finds;

SITE OWNER AND LOCATION

1. Don Stauffer (hereafter "Discharger") owns the Los Robles Mobile Home Estates (hereafter the "Mobile Home Park")
2. The Mobile Home Park is located on property owned by the Discharger at 3165 Theater Drive, which is three miles south of Paso Robles and adjacent to Highway 101 in San Luis Obispo County. The Mobile Home Park is in Section 17, T27S, R12E MDB&M (Templeton Quadrangle), as shown on Attachment "A" of this Order.

PURPOSE OF ORDER

3. This Order updates waste discharge requirements that are intended to allow the discharge while upholding State water quality standards.

SITE/FACILITY DESCRIPTION

4. The Mobile Home Park includes 169 units, a clubhouse, an office, a pool and spa, and a laundry room.

Discharge Type

5. The Mobile Home Park produces sanitary wastewater that is treated via on-site septic tanks, leachfields, and seepage pits (as shown in Order No. RB3-2002-0019, Attachment B).

Design and Current Capacity

6. The wastewater treatment and disposal system was designed to process 22,000 gallons-per-day (gpd) of sewage. The current flows to the wastewater treatment and disposal system are not known with certainty, but may exceed the design flows.

Geology

7. The discharge area is located on rolling topography. Soils at the discharge point are, in general, a shaly loam underlain by interspersed lenses of sands and silts that are moderately permeable.

Surface and Groundwater

8. The Mobile Home Park was built around an unnamed ephemeral creek. The Basin Plan designates the following beneficial uses for the unnamed ephemeral creek:
 - a) Municipal & Domestic Water Supply
 - b) Protection of Both Recreation and Aquatic Life
9. Depth to groundwater near the discharge ranges from 90 to 100 feet. Local groundwater is presumed to move in an easterly direction.
10. Supply wells near the discharge location suggest the following ambient groundwater quality:

Parameter	Value (mg/l)
TDS	750 – 850
Sodium	70 – 85
Chloride	150 – 180
Hardness	530 – 550
Sulfate	120
Nitrate (as N)	4.0 – 4.3

11. Present and anticipated beneficial uses of groundwater near the discharge include:
- Municipal & Domestic Water Supply,
 - Agricultural Water Supply
 - Industrial Process Supply, and
 - Industrial Service Supply.

MONITORING PROGRAM

12. Monitoring and Reporting Program (MRP) No. RB3-2002-0019 is a part of the proposed Order. The MRP requires routine water supply, septic tank, effluent, and disposal area monitoring to verify compliance and protection of groundwater quality.

BASIN PLAN

13. The Water Quality Control Plan, Central Coast Basin (Basin Plan) was adopted by the Regional Board on November 19, 1989, and approved by the State Board on August 16, 1990. The Regional Board approved amendments to the Basin Plan on February 11, 1994, and September 8, 1994. The Basin Plan incorporates statewide plans and policies by reference and contains a strategy for protecting beneficial uses of State waters.

ENVIRONMENTAL ASSESSMENT

14. These waste discharge requirements are for an existing facility and are exempt from the provisions of the California Environmental Quality Act (Public Resources Code, Section 21000, et. seq.) in accordance with Section 15301, Article 19, Chapter 3, Division 6, Title 14 of the California Code of Regulations.

EXISTING ORDERS/GENERAL FINDINGS

15. The discharge has been regulated by Waste Discharge Requirements Order No. 87-20, adopted by the Board on February 6, 1987. The Board has regulated the discharge since 1971.

16. It is incumbent upon the Discharger to protect the environment to the greatest degree possible and insure the collection system and receiving sewerage systems are protected and utilized properly. This responsibility includes preventing overflows and may include restricting or prohibiting the volume, type, or concentration of wastes added to the system.
17. Discharge of Waste is a privilege, not a right, and authorization to discharge is conditional upon the discharge complying with provisions of Division 7 of the California Water Code and any more stringent effluent limitations necessary to implement water quality control plans, to protect beneficial uses, and to prevent nuisance. Compliance with this Order should assume this and mitigate any potential adverse changes in water quality due to discharge.
18. Total maximum daily load (TMDL) allocations will be developed for impaired surface waters in the Salinas River Basin. TMDL documents will allocate responsibility for constituent loading throughout the watershed. Draft TMDL documents are anticipated by June 2002 for siltation and by June 2003 for nutrients, pesticides and salinity. During development of the TMDL source assessment and implementation plan, if Regional Board staff find constituent contributions from waste discharged may adversely impact beneficial uses or exceed water quality objectives, TMDL documents may require changes in Waste Discharge Requirements. Waste Discharge Requirements may be modified to implement applicable TMDL provisions and recommendations.
19. On December 18, 2001, the Board notified the Discharger and interested agencies and person of its intent to issue waste discharge requirements for the discharge and has provided them with a copy of the proposed Order and an opportunity to submit written views and comments.
20. After considering all comments pertaining to this discharge during a public hearing on March 22, 2002, this Order was found consistent with the above findings.

IT IS HEREBY ORDERED, pursuant to authority in Section 13263 of the California Water Code, Don Stauffer, his agents, successors, and assigns may discharge wastes from the Los Robles Mobile Home Estates, providing compliance is maintained with the following:

A. PROHIBITIONS

1. Discharge of treated wastewater to areas other than the designated disposal area, as shown on Attachment "B", is prohibited. ^{BPJ, Existing}
2. Discharge of any wastes; including overflow, bypass, seepage, and overspray; from transport, treatment, storage, or disposal systems to adjacent drainageways or adjacent properties is prohibited. ^{CWC, Existing}
3. Bypass of the treatment facility and discharge of untreated or partially treated wastes directly to seepage pits or leachfields is prohibited. ^{Design, Existing}
4. Discharges not specifically regulated by this Order are prohibited. ^{Design, New}
5. Discharge of uncontaminated storm waters, except storm waters dropping directly into the treatment facilities, is prohibited. ^{Design, New}
6. Creation of a condition of pollution, contamination, or nuisance, as defined by Section 13050 of the California Water Code (CWC), is prohibited. ^{CWC, New}
7. The discharge of radioactive substances is prohibited. ^{BP, New}

B. DISCHARGE SPECIFICATIONS

Operations Specifications

Notes:

- ◆ Other prohibitions and conditions, definitions, and the method of determining compliance are contained in the attached "Standard Provisions and Reporting Requirements for Waste Discharge Requirements" dated January 1984.)
- ◆ Throughout these requirements footnotes are listed to indicate 1) the source of requirements specified and 2) any new requirements. Requirement footnotes are as follows:

^{BP} Basin Plan

^{CWC} California Water Code

^{New} A requirement that did not exist in the previous Board Order

^{Existing} A requirement that was

carried over from the previous Board Order

1. Solids accumulation in the septic tanks shall be cleaned when it appears ^{BPJ, New}
 - a. the combined thickness of sludge and scum exceeds one-third of the tank depth,
 - b. the bottom of the scum layer will be within three inches of exiting the tank,
 - c. the sludge level will be within eight inches of exiting the tank
2. Solids cleaned from septic tanks shall be disposed of at septage receiving facility approved by the Executive Officer. ^{BPJ, New}
3. Sanitary wastewater shall remain within the designated treatment and disposal areas and shall remain underground at all times. ^{Design, New}

4. The leachfield and seepage pit systems shall be operated in a regular rotating sequence, with a rotation frequency not less than annually. ^{BPJ, New}
5. Extraneous surface drainage shall be excluded from all wastewater treatment and disposal facilities. ^{BPJ, Existing}
6. Effluent shall not be discharged within 100 feet of existing water wells and the creek. ^{BPJ, New, BP}

Influent Limitations

7. Influent flow shall not exceed a 30-day average dry weather flow of 22,000 gallons per day. ^{Existing}

Effluent Limitations

8. Effluent concentrations shall not exceed the following limits: ^{Existing, BP}

Table 1 - Effluent Limits

Constituent/ Parameter	Units	30-Day Average	Daily Maximum
Total Dissolved Solids	mg/L	1100	1,350
Sodium	mg/L	155	225
Chloride	mg/L	245	310
Sulfate	mg/L	160	200
pH ^{BPJ}	--	Within limits of 6.5 to 8.4 at all times	

C. GROUNDWATER LIMITATIONS

1. The discharge shall not cause nitrate concentrations in the groundwater downgradient of the disposal area to exceed 8 mg/L (as N). ^{BP}
2. The discharges shall not cause a significant increase of mineral constituent concentrations in underlying groundwaters. ^{BP, Existing}

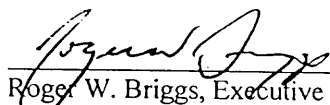
3. The discharge shall not cause concentrations of chemicals and radionuclides in groundwater to exceed limits set forth in Title 22, Chapter 15, Articles 4 and 5 of the California Code of Regulations. ^{BP, Existing}

D. PROVISIONS

1. The requirements prescribed by this Order (No. RB3-2002-0019) supersede requirements prescribed by Order No. 87-20, which was adopted by this Board on February 6, 1987. Order No. 87-20, Waste Discharge Requirements for Los Robles Mobile Home Estates is hereby rescinded.
2. Discharger shall comply with Monitoring and Reporting Program No. RB3-2002-0019, as specified by the Executive Officer.
3. By May 24, 2002, the Discharger shall submit for Executive Officer approval an engineering report proposing a groundwater monitoring system capable of detecting the impact of the discharge upon the receiving water.
4. By June 28, 2002, the Discharger shall submit for Executive Officer approval a technical report that:
 - a. Describes the existing system and determines wastewater flow volume,
 - b. Assesses the existing wastewater collection, treatment, and disposal system for compliance with the original design,
 - c. Assesses the existing wastewater collection, treatment, and disposal system for compliance with these waste discharge requirements,
 - d. Recommends any needed improvements to the existing wastewater collection, treatment, and disposal system, including a timeline for implementation, and
 - e. Evaluates the feasibility of connecting to the Paso Robles Wastewater Treatment Facilities.

5. By July 26, 2002, the Discharger shall submit for Executive Officer approval a technical report describing the results of the installation of groundwater monitoring and the first round of sampling.
6. Discharger shall comply with all relevant sections of the attached "Standard Provisions and Reporting Requirements for Waste Discharge Requirements" dated January 1984.
7. Pursuant to Title 23, Division 3, Subchapter 9, of the California Code of Regulations, the Discharger must submit a written report to the Executive Officer not later than September 22, 2006 addressing:
BPJ
 - a. Whether there will be changes in the continuity, character, location, or volume of the discharge; and,
 - b. Whether, in their opinion, there is any portion of the Order that is incorrect, obsolete, or otherwise in need of revision.

I, **Roger W. Briggs, Executive Officer**, do hereby certify the foregoing is a full, true, and correct copy of an Order adopted by the California Regional Water Quality Control Board, Central Coast Region, on March 22, 2002.



Roger W. Briggs, Executive Officer

5470Z



0 100'

Leachfield Area
(a watered lawn)

Park Entrance

Water Supply Well

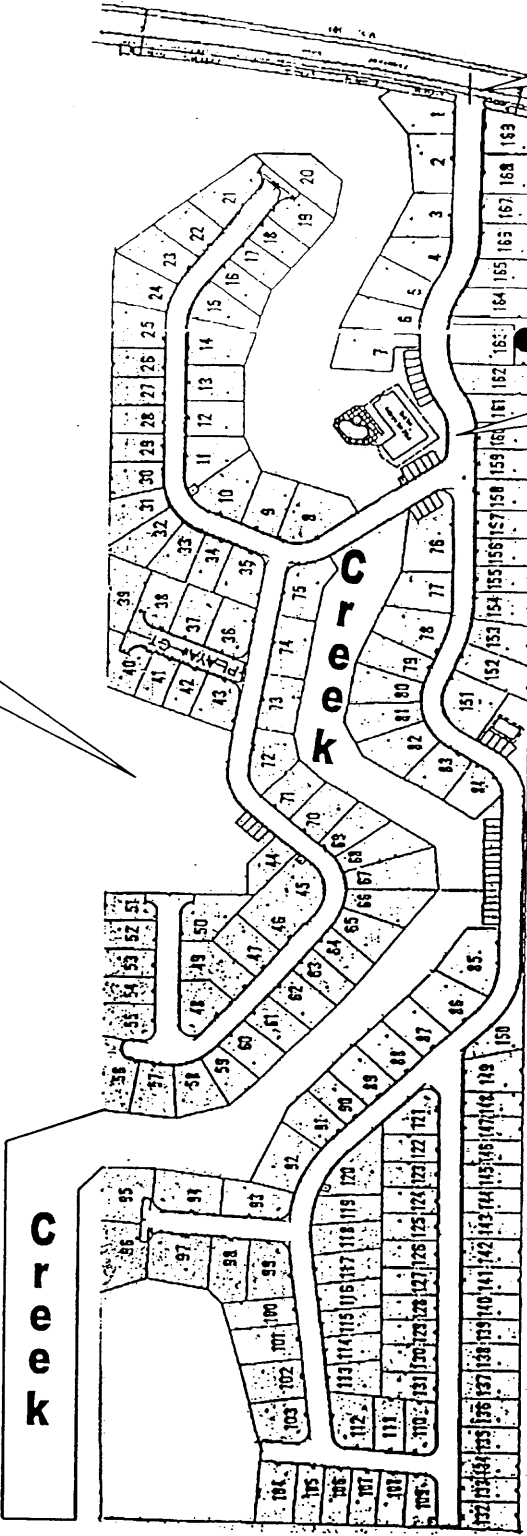
Septic Tanks &
Lift Station



General Ground
Water Gradient

Equipment
Storage
Yard

Seepage Pits
(in Storage Yard)



LOS ROBLES MOBILE HOME ESTATES
San Luis Obispo County, California

Attachment

B

Site Map