



California Regional Water Quality Control Board

Central Coast Region



Dr. Alan Lloyd
Secretary for
Environmental
Protection

Internet Address: <http://www.swrcb.ca.gov/centralcoast>
895 Aerovista Place, Ste. 101 San Luis Obispo, California 93401-7906
Phone (805) 549-3147 • FAX (805) 543-0397

Arnold Schwarzenegger
Governor

November 18, 2005

Dear Interested Party:

SUBJECT: TIMELINE FOR ENROLLMENT UNDER THE GENERAL CONDITIONAL WAIVER - TIMBER HARVEST ACTIVITIES

Enrollment: Timeline and Process

Attached is the Central Coast Regional Water Quality Control Board Timber Harvest Program Flowchart and Timeline (Figure 1). This chart outlines the process used by staff during the review of a Timber Harvest Plan (THP) or Non-Industrial Timber Management Plan (NTMP) for enrollment under the general conditional waiver - timber harvest activities (waiver).

The process starts when Water Board staff receive an application for enrollment of a THP or NTMP under the waiver. Staff will only consider approved THPs or NTMPs for enrollment under the waiver. The application must include the following completed documents: Request for Conditional Timber Harvest Waiver Requirements for a THP or NTMP and Notice of Intent (NOI), both with an original signature from the landowner; and the Timber Harvest Plan Fact Sheet. Staff will review the application and determine if it is complete. Water Board staff will notify the applicant in writing if the application is complete or incomplete. An incomplete letter will explain in detail what information needs to be submitted in order for the application to be considered complete. Applicants will receive a letter within 20 working days of receipt of the application. When staff sends an incomplete letter, we will wait for submittal of a revised application. When the revised application is received, the 20 working day period is reset; this process repeats until the application is complete.

Once a complete application is received and reviewed, staff will evaluate the THP / NTMP using information obtained from the pre-harvest inspection, NOI, and timber harvest plan fact sheet (fact sheet). Using the information provided and the eligibility criteria staff will determine whether the proposed harvest is eligible for the general waiver¹ (Tiers I, II, and III). If the proposed harvest is eligible for enrollment, staff will assign the appropriate monitoring tier and monitoring requirements. The evaluation process will take 10 working days.

When coverage under the general waiver for an eligible harvest is established, staff will prepare the notice of enrollment letter and the monitoring and reporting plan within 10 working days.

The flowchart (Figure 1) shows the typical time for Water Board staff to process an application. Staff understands the importance that timing plays in the conduct of timber operations and strives

¹ If the proposed harvest is not eligible for coverage under the general waiver, the applicant will be informed that an individual waiver or waste discharge requirements are needed.

to process applications as quickly as possible. Depending on workload and staff availability, turnaround of a complete application may take less than the 40 working days shown on Figure 1.

Winter Operation Concerns

Staff has serious concerns about potential water quality impacts from **beginning** timber operations during the weeks immediately prior to the onset of the winter period (October 15). This time period should be reserved for closing up operations for the season. Please plan the timing of general waiver applications to give ample time to complete harvest operations before the onset of winter. To ensure ample time to complete harvest operations before the onset of winter, please provide completed applications to the Water Board office no later than August 31st. Applications received after August 31st should not plan on conducting activities with heavy equipment (road and landing construction, skidding, and hauling) until the following operating season.

Comments or questions regarding this matter should be directed to Julia Dyer at 805-594-6144 or jdyer@waterboards.ca.gov.

Sincerely,



fr

Roger W. Briggs
Executive Officer

Attachment: CCRWQCB Timber Harvest Program Flowchart and Timeline

CC: Interested parties

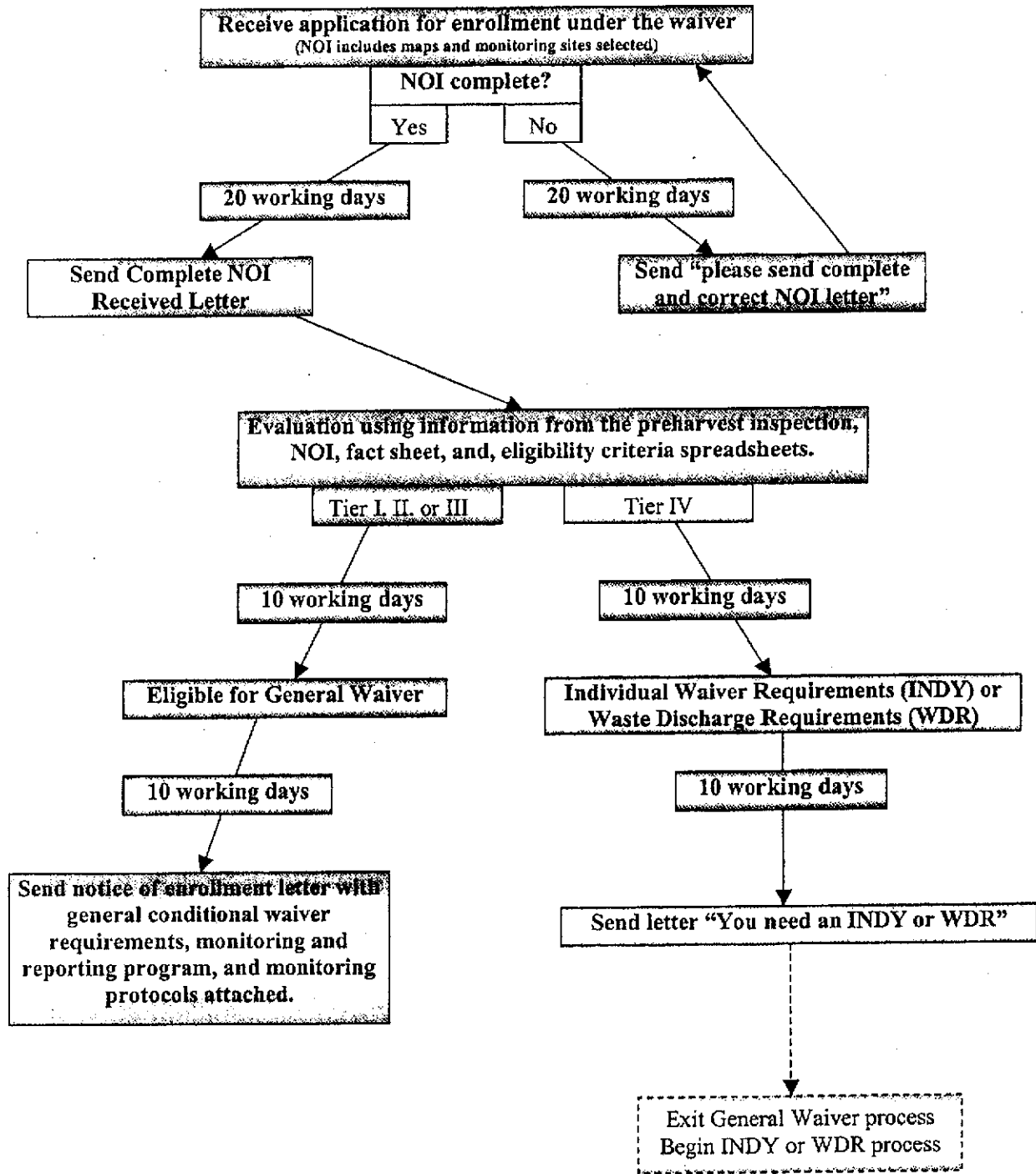


Figure 1 – The Central Coast Regional Water Quality Control Board
Timber Harvest Program Flowchart and Timeline