



Regional Water Quality Control Board Central Coast Region



Linda S. Adams
Secretary for
Environmental Protection

895 Aerovista Place, Suite 101, San Luis Obispo, California 93401
(805) 549-3147 • Fax (805) 543-0397
<http://www.waterboards.ca.gov/centralcoast/>

Arnold Schwarzenegger
Governor

**ORDER NO. R3-2010-0039
NPDES NO. CA0047791**

**WASTE DISCHARGE REQUIREMENTS
FOR THE CHY COMPANY AND OLIVE SPRINGS QUARRY, INC.
OLIVE SPRINGS QUARRY**

The following Discharger is subject to waste discharge requirements as set forth in this Order:

Table 1. Discharger Information

Discharger	The CHY Company and Olive Springs Quarry, Inc.
Name of Facility	Olive Springs Quarry
Facility Address	1399 Olive Springs Road
	Soquel, CA 95073
	Santa Cruz County
The U.S. Environmental Protection Agency (USEPA) and the Regional Water Quality Control Board have classified this discharge as a minor discharge.	

The discharge by the CHY Company and Olive Springs Quarry, Inc. from the Olive Springs Quarry from the discharge points identified below is subject to waste discharge requirements as set forth in this Order:

Table 2. Discharge Location

Discharge Point	Effluent Description	Discharge Point Latitude	Discharge Point Longitude	Receiving Water
002	Treated process wastewater and storm water discharged from Pond C	37°, 03', 30" N	121°, 55', 15" W	Soquel Creek

Table 3. Administrative Information

This Order was adopted by the Regional Water Quality Control Board on:	December 9, 2010
This Order shall become effective on:	December 9, 2010
This Order shall expire on:	December 9, 2015
The Discharger shall file a Report of Waste Discharge in accordance with title 23, California Code of Regulations, as application for issuance of new waste discharge requirements no later than:	June 9, 2015

THEREFORE, IT IS HEREBY ORDERED, that this Order supercedes Order No. R3-2005-0057 except for enforcement purposes, and, in order to meet the provisions contained in

Item No. 12, Attachment No. 1
Olive Springs Quarry
Dec. 9, 2010 Meeting

division 7 of the Water Code (commencing with section 13000) and regulations adopted thereunder, and the provisions of the federal Clean Water Act (CWA) and regulations and guidelines adopted thereunder, the Discharger shall comply with the requirements in this Order.

I, Roger Briggs Executive Officer, do hereby certify that this Order, with all attachments, is a full, true, and correct copy of an Order adopted by the California Regional Water Quality Control Board, Central Coastal Region, on December 9, 2010.

Roger W. Briggs, Executive Officer

Table of Contents

I.	Facility Information	5
II.	Findings	6
III.	Discharge Prohibitions.....	12
IV.	Effluent Limitations and Discharge Specifications	13
	A. Effluent Limitations – Discharge Point Nos. 002	13
	B. Land Discharge Specifications – Not Applicable.....	15
	C. Reclamation Specifications – Not Applicable	15
V.	Receiving Water Limitations	16
	A. Surface Water Limitation.....	16
	B. Groundwater Limitations – Not Applicable	18
VI.	Provisions.....	19
	A. Standard Provisions.....	19
	B. Monitoring and Reporting Program (MRP) Requirements	19
	C. Special Provisions.....	19
	1. Reopener Provisions.....	19
	2. Special Studies, Technical Reports and Additional Monitoring Requirements	19
	3. Best Management Practices and Pollution Prevention – Not Applicable	20
	4. Construction, Operation and Maintenance Specifications.....	20
	5. Special Provisions for Municipal Facilities (POTWs Only) – Not Applicable	20
	6. Other Special Provisions.....	21
	7. Compliance Schedules – Not Applicable	21
VII.	Compliance Determination	22

List of Tables

Table 1.	Discharger Information	1
Table 2.	Discharge Location	1
Table 3.	Administrative Information.....	1
Table 4.	Facility Information	5
Table 5.	Basin Plan Beneficial Uses	8
Table 6.	Effluent Limitations for Conventional and Nonconventional Pollutants.....	13
Table 7.	Effluent Limitations for Toxic Pollutants	13
Table 8.	Toxicity Reduction Evaluation Schedule	20

List of Attachments

Attachment A – Definitions	A-1
Attachment B – Map	B-1
Attachment C – Flow Schematic.....	C-1
Attachment D –Standard Provisions.....	D-1
Attachment E – Monitoring and Reporting Program	E-1
Attachment F – Fact Sheet.....	1

I. FACILITY INFORMATION

The following Discharger is subject to waste discharge requirements as set forth in this Order:

Table 4. Facility Information

Discharger	The CHY Company and Olive Springs Quarry, Inc.
Name of Facility	Olive Springs Quarry
Facility Address	1399 Olive Springs Road
	Soquel, CA 95073
	Santa Cruz County
Facility Contact, Title, and Phone	Chris Bone, Manager (831) 475-1610
Mailing Address	P.O. Box 747 Soquel, CA 95073
Type of Facility	NAICS Code 212313 - Crushed and Broken Granite Mining and Quarrying
Facility Design Flow	Design Flow Not Available. Discharge Point 002: No discharges occurred during the previous permit term. The last reported discharge occurred from 2000-2002, where discharges of process wastewater occurred 3 to 4 days per year at approximately 0.03 million gallons per day (MGD).

II. FINDINGS

The California Regional Water Quality Control Board, Central Coast Region (Regional Water Board), finds:

A. Background. The CHY Company and Olive Springs Quarry, Inc. (hereinafter the Discharger) is currently discharging under Order No. R3-2005-0057 and National Pollutant Discharge Elimination System (NPDES) Permit No. CA0047791. The Discharger submitted a Report of Waste Discharge, dated **March 19, 2010**, and applied for a NPDES permit renewal to discharge treated wastewater and storm water runoff from the Olive Springs Quarry (hereinafter Facility). The application was deemed complete on **March 19, 2010**, by Regional Water Board staff.

For the purposes of this Order, references to the “Discharger” or “Permittee” in applicable federal and state laws, regulations, plans, or policy are held to be equivalent to references to the Discharger herein.

B. Facility Description. The Discharger owns and operates an open pit granite quarrying and processing facility where raw material is dry quarried, crushed, screened, and washed. The Discharger also produces finished asphalt products. Treated process wastewater, commingled with storm water runoff, is discharged through Discharge Point 002 to Soquel Creek, a water of the United States within the Soquel Creek Watershed.

Storm water runoff from Leasehold 1 is discharged through Discharge Point 001 directly to Soquel Creek. Discharge Points 003 and 004 discharge storm water from Leasehold 3 to a drainage ditch directly adjacent to Olive Springs Road, which ultimately discharges to Soquel Creek. Discharge Point 005 conveys storm water directly from Leasehold 3 to Soquel Creek through a 24-inch culvert. Storm water discharges from Discharge Points 001, 003, 004, and 005 are not authorized under this Order; the discharges are regulated under State Water Resources Control Board’s Water Quality Order 97-03-DWQ, NPDES General Permit No. CAS000001, *Waste Discharge Requirements for Discharges of Storm Water Associated with Industrial Activities Excluding Construction Activities*.

Attachment B is a topographic map showing the regional location of the Facility. Attachment C provides a process wastewater and storm water flow schematic of the Facility.

C. Legal Authorities. This Order is issued pursuant to section 402 of the CWA and implementing regulations adopted by the U.S. Environmental Protection Agency (USEPA) and chapter 5.5, division 7 of the California Water Code (commencing with section 13370). It shall serve as a NPDES permit for point source discharges from this Facility to surface waters. This Order also serves as Waste Discharge Requirements (WDRs) pursuant to article 4, chapter 4, division 7 of the Water Code (commencing with section 13260).

D. Background and Rationale for Requirements. The Regional Water Board developed the requirements of this Order based on information submitted as part of the application,

through monitoring and reporting programs, and other available information, including a site visit on March 9, 2010. The Fact Sheet (Attachment F), which contains background information and rationale for the Order's waste discharge requirements, is hereby incorporated into this Order and constitutes part of the Findings for this Order. Attachments A through E are also incorporated into this Order.

- E. California Environmental Quality Act (CEQA).** Under Water Code section 13389, this action to adopt an NPDES permit is exempt from the provisions of CEQA, Public Resources Code sections 21100-21177.
- F. Technology-based Effluent Limitations.** Section 301(b) of the CWA and implementing USEPA permit regulations at section 122.44, title 40 of the Code of Federal Regulations¹, require that permits include conditions meeting applicable technology-based requirements at a minimum, and any more stringent effluent limitations necessary to meet applicable water quality standards. The discharge authorized by this Order must meet minimum federal technology-based requirements based on Effluent Limitations Guidelines and Standards for the Mineral Mining and Processing Point Source Category in Part 436 and Best Professional Judgment (BPJ) in accordance with Part 125, section 125.3. A detailed discussion of the technology-based effluent limitations development is included in the Fact Sheet (Attachment F).
- G. Water Quality-Based Effluent Limitations.** Section 301(b) of the CWA and section 122.44(d) require that permits include limitations more stringent than applicable federal technology-based requirements where necessary to achieve applicable water quality standards.

Section 122.44(d)(1)(i) mandates that permits include effluent limitations for all pollutants that are or may be discharged at levels that have the reasonable potential to cause or contribute to an exceedance of a water quality standard, including numeric and narrative objectives within a standard. Where reasonable potential has been established for a pollutant, but there is no numeric criterion or objective for the pollutant, water quality-based effluent limitations (WQBELs) must be established using: (1) USEPA criteria guidance under CWA section 304(a), supplemented where necessary by other relevant information; (2) an indicator parameter for the pollutant of concern; or (3) a calculated numeric water quality criterion, such as a proposed state criterion or policy interpreting the state's narrative criterion, supplemented with other relevant information, as provided in section 122.44(d)(1)(vi).

- H. Water Quality Control Plans.** The Regional Water Board has adopted a Water Quality Control Plan for the Central Coast Region (the Basin Plan) that designates beneficial uses, establishes water quality objectives, and contains implementation programs and policies to achieve those objectives for receiving waters within the Region. In addition, the Basin Plan implements State Water Resources Control Board (State Water Board) Resolution No. 88-63, which establishes State policy that all waters, with certain exceptions, are suitable or potentially suitable municipal or domestic drinking water

¹ All further statutory references are to title 40 of the Code of Federal Regulations unless otherwise indicated.

supplies. Beneficial uses established by the Basin Plan for Soquel Creek are presented in Table 5, below.

Table 5. Basin Plan Beneficial Uses

Discharge Point	Receiving Water Name	Beneficial Use(s)
002	Soquel Creek	MUN - Municipal and domestic supply AGR - Agricultural supply IND - Industrial service supply GWR - Groundwater recharge REC-1 - Water contact recreation REC-2 - Non-contact water recreation WILD - Wildlife habitat COLD - Cold fresh water habitat MIGR - Migration of aquatic organisms SPWN - Spawning, reproduction, and/or early development BIOL- Preservation of Biological Habitats of Special Significance FRSH - Freshwater replenishment COMM - Commercial and sport fishing

To protect beneficial uses, the Basin Plan establishes water quality objectives and implementation programs. This Order’s requirements implement the Basin Plan.

- I. **Thermal Plan.** The State Water Resources Control Board (State Board) adopted a *Water Quality Control Plan for Control of Temperature in the Coastal and Interstate Water and Enclosed Bays and Estuaries of California* (Thermal Plan) on May 18, 1972, and amended this plan on September 18, 1975. The Thermal Plan contains temperature objectives for inland surface waters, which are applicable to the Discharger. The general objective for temperature from Section II.A.2.a. of the Basin Plan is more limiting, however, and is included as a receiving water limitation in the Order.
- J. **National Toxics Rule (NTR) and California Toxics Rule (CTR).** USEPA adopted the NTR on December 22, 1992, and later amended it on May 4, 1995 and November 9, 1999. About forty criteria in the NTR applied in California. On May 18, 2000, USEPA adopted the CTR. The CTR promulgated new toxics criteria for California and, in addition, incorporated the previously adopted NTR criteria that were applicable in the State. The CTR was amended on February 13, 2001. These rules contain water quality criteria for priority pollutants that are applicable to discharges from the Facility.
- K. **State Implementation Policy.** On March 2, 2000, the State Water Board adopted the *Policy for Implementation of Toxics Standards for Inland Surface Waters, Enclosed Bays, and Estuaries of California* (State Implementation Policy or SIP). The SIP became effective on April 28, 2000 with respect to the priority pollutant criteria promulgated for California by the USEPA through the NTR and to the priority pollutant objectives established by the Regional Water Board in the Basin Plan. The SIP became effective on May 18, 2000 with respect to the priority pollutant criteria promulgated by the USEPA through the CTR. The State Water Board adopted amendments to the SIP on February

24, 2005, that became effective on July 13, 2005. The SIP establishes implementation provisions for priority pollutant criteria and objectives and provisions for chronic toxicity control. Requirements of this Order implement the SIP.

- L. Compliance Schedules and Interim Requirements.** Section 2.1 of the SIP provides that, based on a Discharger's request and demonstration that it is infeasible for an existing Discharger to achieve immediate compliance with an effluent limitation derived from a CTR criterion, compliance schedules may be allowed in an NPDES permit. Unless an exception has been granted under section 5.3 of the SIP, a compliance schedule may not exceed 5 years from the date that the permit is issued or reissued, nor may it extend beyond 10 years from the effective date of the SIP (or May 18, 2010) to establish and comply with CTR criterion-based effluent limitations. Where a compliance schedule for a final effluent limitation exceeds 1 year, the Order must include interim numeric limitations for that constituent or parameter. Where allowed by the Basin Plan, compliance schedules and interim effluent limitations or discharge specifications may also be granted to allow time to implement a new or revised water quality objective. This Order does not include compliance schedules or interim effluent limitations.
- M. Alaska Rule.** On March 30, 2000, USEPA revised its regulation that specifies when new and revised state and tribal water quality standards (WQS) become effective for CWA purposes [65 Fed. Reg. 24641 (April 27, 2000) (codified at 40 CFR 131.21)]. Under the revised regulation (also known as the Alaska Rule), new and revised standards submitted to USEPA after May 30, 2000, must be approved by USEPA before being used for CWA purposes. The final rule also provides that standards already in effect and submitted to USEPA by May 30, 2000 may be used for CWA purposes, whether or not approved by USEPA.
- N. Stringency of Requirements for Individual Pollutants.** This Order contains both technology-based and water quality-based effluent limitations for individual pollutants. As discussed in section IV.B of the Fact Sheet, the Order establishes technology-based effluent limitations for pH, settleable solids and total suspended solids (TSS) for Discharge Point 002. These technology-based limitations implement the minimum applicable federal technology-based requirements. The Order also contains limitations necessary to meet applicable water quality standards. These limitations are not more stringent than required by the CWA.

WQBELs have been scientifically derived to implement water quality objectives that protect beneficial uses. Both the beneficial uses and the water quality objectives have been approved pursuant to federal law and are the applicable federal water quality standards. To the extent that toxic pollutant WQBELs were derived from the CTR, the CTR is the applicable standard pursuant to NPDES regulations at 40 CFR 131.38. The scientific procedures for calculating the individual WQBELs for priority pollutants are based on the CTR and the SIP, which was approved by USEPA on May 18, 2000. All beneficial uses and water quality objectives contained in the Basin Plan were approved under State law and submitted to and approved by USEPA prior to May 30, 2000. Any water quality objectives and beneficial uses submitted to USEPA prior to May 30, 2000, but not approved by USEPA before that date, are nonetheless "applicable water quality

standards for purposes of the CWA” pursuant to NPDES regulations at 40 CFR 131.21 (c)(1). Collectively, this Order’s restrictions on individual pollutants are no more stringent than required to implement the requirements of the CWA.

- O. Antidegradation Policy.** NPDES regulations at 40 CFR 131.12 require that State water quality standards include an antidegradation policy consistent with the federal policy. The State Water Board established California’s antidegradation policy in State Water Board Resolution No. 68-16, which incorporates the federal antidegradation policy where the federal policy applies under federal law. Resolution No. 68-16 requires that the existing quality of waters be maintained unless degradation is justified based on specific findings. The Basin Plan implements and incorporates by reference both the State and federal antidegradation policies. As discussed in Section III.C.5 of the Fact Sheet, the permitted discharge is consistent with the antidegradation provisions of 40 CFR 131.12 and State Water Board Resolution No. 68-16.
- P. Anti-Backsliding Requirements.** CWA sections 402 (o) (2) and 303 (d) (4) and NPDES regulations at 40 CFR 122.44 (l) prohibit backsliding in NPDES permits. These antibacksliding provisions require effluent limitations in a reissued permit to be as stringent as those in the previous permit, with some exceptions where limitations may be relaxed. All effluent limitations in this Order are at least as stringent as the effluent limitations in the previous Order.
- Q. Endangered Species Act.** This Order does not authorize any act that results in the taking of a threatened or endangered species or any act that is now prohibited, or becomes prohibited in the future, under either the California Endangered Species Act (Fish and Game Code sections 2050 to 2097) or the Federal Endangered Species Act (16 U.S.C.A. sections 1531 to 1544). This Order requires compliance with effluent limits, receiving water limits, and other requirements to protect the beneficial uses of waters of the state. The discharger is responsible for meeting all requirements of the applicable Endangered Species Act.
- R. Monitoring and Reporting.** Section 122.48 requires that all NPDES permits specify requirements for recording and reporting monitoring results. Water Code sections 13267 and 13383 authorizes the Regional Water Board to require technical and monitoring reports. The Monitoring and Reporting Program (MRP) (Attachment E) establishes monitoring and reporting requirements to implement federal and State requirements.
- S. Standard and Special Provisions.** Standard Provisions, which apply to all NPDES permits in accordance with section 122.41, and additional conditions applicable to specified categories of permits in accordance with section 122.42, are provided in Attachment D. The Regional Water Board has also included in this Order special provisions applicable to the Discharger. A rationale for the special provisions contained in this Order is provided in the attached Fact Sheet.
- T. Provisions and Requirements Implementing State Law.** The provisions/requirements in subsections IV.C, V.B, and VI.C. of this Order are included to implement state law only. These provisions/requirements are not required or authorized

under the federal CWA; consequently, violations of these provisions/requirements are not subject to the enforcement remedies that are available for NPDES violations.

- U. Notification of Interested Parties.** The Regional Water Board has notified the Discharger and interested agencies and persons of its intent to prescribe Waste Discharge Requirements for the discharge and has provided them with an opportunity to submit their written comments and recommendations. Details of notification are provided in the Fact Sheet accompanying this Order.

- V. Consideration of Public Comment.** The Regional Water Board, in a public meeting, heard and considered all comments pertaining to the discharge. Details of the Public Hearing are provided in the Fact Sheet of this Order.

III. DISCHARGE PROHIBITIONS

- A.** Discharge of process wastewater at locations other than as described by this Order is prohibited.
- B.** The discharge of any waste not specifically regulated by this Order to a storm drain system or to waters of the United States, excluding storm water regulated by General Permit No. CAS000001 (Waste Discharge Requirements for Discharges of Storm Water Associated with Industrial Activities), is prohibited.
- C.** The overflow or bypass of wastewater from the Discharger's collection, treatment, or disposal facilities and the subsequent discharge of untreated or partially treated wastewater, except as provided for in Attachment D, Standard Provision I.G (Bypass), is prohibited.
- D.** The discharge shall not cause or contribute to adverse impacts to beneficial uses of water or to threatened or endangered species and their habitat.
- E.** Creation of a condition of pollution, contamination, or nuisance, as defined by Section 13050 of the California Water Code, is prohibited.
- F.** Discharge of fuels, greases, or oils to the facility's treatment ponds, the storm drainage system, or to waters of the United States and/or waters of the State is prohibited.
- G.** The discharge of radioactive substances is prohibited.

IV. EFFLUENT LIMITATIONS AND DISCHARGE SPECIFICATIONS

A. Effluent Limitations – Discharge Point No. 002

1. Final Effluent Limitations – Discharge Point 002

- a. **Conventional and Non-Conventional Pollutants.** The Discharger shall maintain compliance with the following effluent limitations at Discharge Point 002, with compliance measured at Monitoring Location EFF-002 as described in the attached Monitoring and Reporting Program (MRP).

Table 6. Effluent Limitations for Conventional and Nonconventional Pollutants

Constituent	Units	Effluent Limitations	
		Average Monthly	Maximum Daily
pH	s.u.	7.0 - 8.3 at all times	
Total Suspended Solids (TSS)	mg/L	--	50
Settleable Solids	ml/L	0.3	--
Acute Toxicity	TU _a	--	1 ^[1]

^[1] Survival of test organisms exposed to 100 percent effluent shall not be significantly reduced when compared to the survival of control organisms using a t-test.

- b. **Toxic Pollutants.** The Discharger shall maintain compliance with the following effluent limitations for toxic pollutants at Discharge Point 002, with compliance measured at Monitoring Location EFF-002, as described in the attached MRP.

Table 7. Effluent Limitations for Toxic Pollutants

Constituent	Units	Effluent Limits	
		Average Monthly	Maximum Daily
Mercury, Total Recoverable	µg/L	0.050	0.10
Selenium, Total Recoverable	µg/L	10	20
Cyanide, Total (as CN)	µg/L	4.3	8.5
Antimony, Total Recoverable	µg/L	6.0	12
Arsenic, Total Recoverable	µg/L	50	100
Beryllium, Total Recoverable	µg/L	4.0	8.0
Cadmium, Total Recoverable	µg/L	5.0	10
Chromium (III)	µg/L	468	940
Chromium (VI)	µg/L	8.1	16
Copper, Total Recoverable	µg/L	22	44
Lead, Total Recoverable	µg/L	13	25
Nickel, Total Recoverable	µg/L	100	201
Silver, Total Recoverable	µg/L	17	34
Thallium, Total Recoverable	µg/L	1.7	3.4
Zinc, Total Recoverable	µg/L	164	329
Asbestos	fibers/L	7,000,000	14,000,000
2,3,7,8 TCDD	µg/L	0.000000013	0.000000026
Acrolein	µg/L	320	642
Acrylonitrile	µg/L	0.059	0.12
Benzene	µg/L	1.0	2.0

Constituent	Units	Effluent Limits	
		Average Monthly	Maximum Daily
Bromoform	µg/L	4.3	8.6
Carbon Tetrachloride	µg/L	0.25	0.50
Chlorobenzene	µg/L	30	60
Chlorodibromomethane	µg/L	0.40	0.80
Chloroform	µg/L	80	160
Dichlorobromomethane	µg/L	0.56	1.12
1,1-Dichloroethane	µg/L	5.0	10
1,2-Dichloroethane	µg/L	0.38	0.76
1,1-Dichloroethylene	µg/L	0.057	0.11
1,2-Dichloropropane	µg/L	0.52	1.0
1,3-Dichloropropylene	µg/L	0.50	1.0
Ethylbenzene	µg/L	300	602
Methyl Bromide	µg/L	48	96
Methylene Chloride	µg/L	4.7	9.4
1,1,2,2-Tetrachloroethane	µg/L	0.17	0.34
Tetrachloroethylene	µg/L	0.80	1.6
Toluene	µg/L	150	301
1,2-Trans-Dichloroethylene	µg/L	10	20
1,1,1-Trichloroethane	µg/L	200	401
1,1,2-Trichloroethane	µg/L	0.60	1.2
Trichloroethylene	µg/L	2.7	5.4
Vinyl Chloride	µg/L	0.50	1.0
2-Chlorophenol	µg/L	120	241
2,4-Dichlorophenol	µg/L	93	187
2,4-Dimethylphenol	µg/L	540	1,083
2-methyl-4,6-dinitrophenol	µg/L	13	27
2,4-Dinitrophenol	µg/L	70	140
Pentachlorophenol	µg/L	0.28	0.56
Phenol	µg/L	21,000	42,130
2,4,6-Trichlorophenol	µg/L	2.1	4.2
Acenaphthene	µg/L	1,200	2,407
Anthracene	µg/L	9,600	19,259
Benzidine	µg/L	0.00012	0.00024
Benzo(a)Anthracene	µg/L	0.0044	0.0088
Benzo(a)Pyrene	µg/L	0.0044	0.0088
Benzo(b)Fluoranthene	µg/L	0.0044	0.0088
Benzo(k)Fluoranthene	µg/L	0.0044	0.0088
Bis(2-Chloroethyl)Ether	µg/L	0.031	0.062
Bis(2-Chloroisopropyl)Ether	µg/L	1,400	2,809
Bis(2-Ethylhexyl)Phthalate	µg/L	1.8	3.6
Butylbenzyl Phthalate	µg/L	3,000	6,019
2-Chloronaphthalene	µg/L	1,700	3,411
Chrysene	µg/L	0.0044	0.0088
Dibenzo(a,h)Anthracene	µg/L	0.0044	0.0088
1,2-Dichlorobenzene	µg/L	600	1,204
1,3-Dichlorobenzene	µg/L	400	802

Constituent	Units	Effluent Limits	
		Average Monthly	Maximum Daily
1,4-Dichlorobenzene	µg/L	5.0	10
3,3 Dichlorobenzidine	µg/L	0.040	0.1
Diethyl Phthalate	µg/L	23,000	46,142
Dimethyl Phthalate	µg/L	313,000	627,937
Di-n-Butyl Phthalate	µg/L	2,700	5,417
2,4-Dinitrotoluene	µg/L	0.11	0.22
1,2-Diphenylhydrazine	µg/L	0.040	0.080
Fluoranthene	µg/L	300	602
Fluorene	µg/L	1,300	2,608
Hexachlorobenzene	µg/L	0.00075	0.0015
Hexachlorobutadiene	µg/L	0.44	0.88
Hexachlorocyclopentadiene	µg/L	50	100
Hexachloroethane	µg/L	1.9	3.8
Indeno(1,2,3-cd)Pyrene	µg/L	0.0044	0.0088
Isophorone	µg/L	8.4	17
Nitrobenzene	µg/L	17	34
N-Nitrosodimethylamine	µg/L	0.00069	0.0014
N-Nitrosodi-n-Propylamine	µg/L	0.0050	0.010
N-Nitrosodiphenylamine	µg/L	5.0	10
Pyrene	µg/L	960	1,926
1,2,4-Trichlorobenzene	µg/L	5.0	10
Aldrin	µg/L	0.00013	0.00026
alpha-BHC	µg/L	0.0039	0.0078
beta-BHC	µg/L	0.014	0.028
gamma-BHC	µg/L	0.019	0.038
Chlordane	µg/L	0.00057	0.0011
4,4'-DDT	µg/L	0.00059	0.0012
4,4'-DDE	µg/L	0.00059	0.0012
4,4'-DDD	µg/L	0.00083	0.0017
Dieldrin	µg/L	0.00014	0.00028
alpha-Endosulfan	µg/L	0.046	0.092
beta-Endolsulfan	µg/L	0.046	0.092
Endosulfan Sulfate	µg/L	110	221
Endrin	µg/L	0.029	0.059
Endrin Aldehyde	µg/L	0.76	1.5
Heptachlor	µg/L	0.00021	0.00042
Heptachlor Epoxide	µg/L	0.00010	0.00020
PCBs sum ^[1]	µg/L	0.00017	0.00034
Toxaphene	µg/L	0.00016	0.00033

^[1] Includes aroclors 1242, 1254, 1221, 1232, 1248, 1260, and 1016.

B. Land Discharge Specifications – Not Applicable

C. Reclamation Specifications – Not Applicable

V. RECEIVING WATER LIMITATIONS

A. Surface Water Limitation

Receiving water limitations are based on water quality objectives contained in the Basin Plan and are a required part of this Order. Discharges from the Facility shall not cause the following conditions in Soquel Creek.

1. Waters shall be free of coloration that causes nuisance or adversely affects beneficial uses. Coloration attributable to materials of waste origin shall not be greater than 15 units or 10 percent above natural background color, whichever is greater.
2. Waters shall not contain taste or odor-producing substances in concentrations that impart undesirable tastes or odors to fish flesh or other edible products of aquatic origin, that cause nuisance, or that adversely affect beneficial uses.
3. Waters shall not contain floating material, including solids, liquids, foams, and scum, in concentrations that cause nuisance or adversely affect beneficial uses.
4. Waters shall not contain suspended material in concentrations that causes nuisance or adversely affects beneficial uses.
5. Waters shall not contain settleable material in concentrations that result in deposition of material that causes nuisance or adversely affects beneficial uses.
6. Waters shall not contain oils, greases, waxes, or other similar materials in concentrations that result in a visible film or coating on the surface of the water or on objects in the water, that cause nuisance, or that otherwise adversely affect beneficial uses.
7. Waters shall not contain biostimulatory substances in concentrations that promote aquatic growths to the extent that such growths cause nuisance or adversely affect beneficial uses.
8. The suspended sediment load and suspended sediment discharge rate to surface waters shall not be altered in such a manner as to cause nuisance or adversely affect beneficial uses.
9. Waters shall be free of changes in turbidity that cause nuisance or adversely affect beneficial uses. Increase in turbidity attributable to controllable water quality factors shall not exceed the following limits:
 - a. Where natural turbidity is between 0 and 50 Jackson Turbidity Units (JTU), increases shall not exceed 20 percent.
 - b. Where natural turbidity is between 50 and 100 JTU, increases shall not exceed 10 JTU.

- c. Where natural turbidity is greater than 100 JTU, increases shall not exceed 10 percent.
10. The pH value shall not be depressed below 7.0 to protect the cold freshwater habitat nor raised above 8.3 to protect the municipal and domestic supply, agricultural supply, water contact recreation, and non-contact water recreation beneficial uses, nor shall changes in ambient pH levels exceed 0.5 pH units.
11. To protect cold freshwater habitat, dissolved oxygen concentrations in receiving waters shall not be reduced below 7.0 mg/L at any time. If background concentration of dissolved oxygen in receiving waters is less than 7.0 mg/L, then discharges shall not reduce dissolved oxygen concentrations.
12. At no time or place shall the temperature be increased by more than 5°F above natural receiving water temperature.
13. All waters shall be maintained free of toxic substances in concentrations which are toxic to, or which produce detrimental physiological responses in, human, plant, animal, or aquatic life. Survival of aquatic life in surface waters subjected to a waste discharge or other controllable water quality conditions shall not be less than that for the same water body in areas unaffected by the waste discharge.
14. The discharge of wastes shall not cause concentrations of unionized ammonia (NH₃) to exceed 0.025 mg/L (as N) in the Soquel Creek.
15. No individual pesticide or combination of pesticides shall reach concentrations that adversely affect the beneficial uses of the receiving water. There shall be no increase in pesticide concentrations found in bottom sediments or aquatic life. For waters where existing concentrations are presently nondetectable or where beneficial uses would be impaired by concentrations in excess of nondetectable levels, total identifiable chlorinated hydrocarbon pesticides shall not be present at concentrations detectable within the accuracy of analytical methods as prescribed in Standard Methods for the Examination of Water and Wastewater, latest edition, or other equivalent methods approved by the Executive Officer.
16. Waters shall not contain organic substances in concentrations greater than the following:
- | | |
|-------------------------------------|------------|
| Methylene Blue Activated Substances | 0.2 mg/L |
| Phenols | 0.1 mg/L |
| PCBs | 0.3 µg/L |
| Phthalate Esters | 0.002 µg/L |
17. Radionuclides shall not be present in concentrations that are deleterious to human, plant, animal, or aquatic life; or result in the accumulation of radionuclides in the food web to an extent which presents a hazard to human, plant, animal, or aquatic life. In no circumstance shall receiving waters contain concentrations of radionuclides in excess of the maximum contaminant levels (MCLs) for radioactivity presented in Table 4 of Title 22 California Code of Regulations, Division 4, Chapter 15, Article 5.

18. To protect the municipal and domestic supply beneficial use, receiving waters shall not contain concentrations of chemical constituents in excess of the primary maximum contaminant levels (MCLs) specified for drinking water in Table 64431-A (Primary MCLs for Inorganic Chemicals) and Table 64444-A (Primary MCLs for Organic Chemicals) of Title 22 California Code of Regulations, Division 4, Chapter 15.
19. To protect the water contact recreation beneficial use, fecal coliform concentration, based on a minimum of not less than five samples for any 30-day period, shall not exceed a log mean of 200 per 100 mL, nor shall more than 10 percent of samples collected during any 30-day period exceed 400 per 100 mL.
20. Receiving waters shall not contain concentrations of chemical constituents in amounts that adversely affect the agricultural beneficial use. (Interpretation of adverse effect shall be derived from guidelines of the University of California Agricultural Extension Service presented in Section III, Table 3-3 of the Basin Plan.)
21. Waters used for irrigation and livestock watering shall not contain chemical constituents in excess of those levels specified for irrigation and livestock watering in Section III, Table 3-4 of the Basin Plan.
22. To protect cold and warm freshwater habitat beneficial uses, receiving waters shall not contain metals in excess of the following concentrations, established by Table 3-5 of the Basin Plan.

Metal	Receiving Water Hardness > 100 mg/L CaCO ₃	Receiving Water Hardness < 100 mg/L CaCO ₃
Cadmium ^[1]	0.03 mg/L	0.004 mg/L
Chromium	0.05 mg/L	0.05 mg/L
Copper	0.03 mg/L	0.01 mg/L
Lead	0.03 mg/L	0.03 mg/L
Mercury ^[2]	0.0002 mg/L	0.0002 mg/L
Nickel ^[3]	0.4 mg/L	0.1 mg/L
Zinc	0.2 mg/L	0.004 mg/L

^[1] Lower cadmium values not to be exceeded for crustaceans and waters designated SPWN are 0.003 mg/L in hard water and 0.0004 mg/L in soft water.

^[2] Total mercury values should not exceed 0.05 mg/L as an average value; maximum acceptable concentration of total mercury in any aquatic organism is a total biochemical oxygen demand burden of 0.5 mg/L wet weight.

^[3] Value cited as objective pertains to nickel salts (not pure metallic nickel).

B. Groundwater Limitations – Not Applicable

VI. PROVISIONS

A. Standard Provisions

The Discharger shall comply with all Standard Provisions included in Attachment D of this Order.

B. Monitoring and Reporting Program (MRP) Requirements

The Discharger shall comply with the MRP, and future revisions thereto, in Attachment E of this Order. All monitoring shall be conducted according to 40 CFR 136, *Guidelines Establishing Test Procedures for Analysis of Pollutants*.

C. Special Provisions

1. Reopener Provisions

- a. This permit may be reopened and modified in accordance with NPDES regulations at 40 CFR 122 and 124, as necessary, to include additional conditions or limitations based on newly available information or to implement any USEPA-approved, new State water quality objective.

2. Special Studies, Technical Reports and Additional Monitoring Requirements

a. Toxicity Reduction Requirements

If the discharge consistently exceeds an effluent limitation for toxicity specified by section IV.A.1.a of this Order, the Discharger shall conduct a Toxicity Reduction Evaluation (TRE) in accordance with the Discharger's TRE Workplan.

A TRE is a study conducted in a step-wise process designed to identify the causative agents of effluent or ambient toxicity, isolate the sources of toxicity, evaluate the effectiveness of toxicity control options, and then confirm the reduction in toxicity. The first steps of the TRE consist of the collection of data relevant to the toxicity, including additional toxicity testing, and an evaluation of facility operations and maintenance practices, and best management practices. A Toxicity Identification Evaluation (TIE) may be required as part of the TRE, if appropriate. A TIE is a set of procedures to identify the specific chemical(s) responsible for toxicity. These procedures are performed in three phases: characterization; identification; and confirmation using aquatic organism toxicity tests. The TRE shall include all reasonable steps to identify the source of toxicity. The Discharger shall take all reasonable steps to reduce toxicity to the required level once the source of toxicity is identified.

The Discharger shall maintain a TRE Workplan, which describes steps that the Discharger intends to follow if a toxicity effluent limitation in this Order is exceeded. The Workplan shall be prepared in accordance with current technical

guidance and reference material, including EPA/600/2-88-062, and shall describe, at a minimum:

- i. Actions proposed to investigate/identify the causes/sources of toxicity;
- ii. Actions proposed to mitigate the discharge’s adverse effects, to correct the non-compliance, and/or to prevent the recurrence of acute or chronic toxicity; and
- iii. A schedule to implement these actions.

When monitoring detects effluent toxicity greater than a limitation in this Order, the Discharger shall resample immediately, if the discharge is continuing, and retest for whole effluent toxicity. Results of an initial failed test and results of subsequent monitoring shall be reported to the Executive Officer (EO) as soon as possible after receiving monitoring results. The EO will determine whether to initiate enforcement action, whether to require the Discharger to implement a TRE, or to implement other measures. The Discharger shall conduct a TRE considering guidance provided by the USEPA’s Toxicity Reduction Evaluation Procedures, Phases 1, 2, and 3 (EPA document Nos. EPA 600/3-88/034, 600/3-88/035, and 600/3-88/036, respectively). A TRE, if necessary, shall be conducted in accordance with the following schedule.

Table 8. Toxicity Reduction Evaluation Schedule

Action Step	When Required
Take all reasonable measures necessary to immediately reduce toxicity, where the source is known.	Within 24 hours of identification of noncompliance.
Initiate the TRE in accordance to the Workplan.	Within 7 days of notification by the EO.
Conduct the TRE following the procedures in the Workplan.	Within the period specified in the Workplan (not to exceed one year without an approved Workplan)
Submit the results of the TRE, including summary of findings, required corrective action, and all results and data.	Within 60 days of completion of the TRE.
Implement corrective actions to meet Permit limits and conditions.	To be determined by the EO.

3. Best Management Practices and Pollution Prevention – Not Applicable

4. Construction, Operation and Maintenance Specifications

- a. **Erosion and Sediment Control.** By October 1 of each year, the Discharger shall inspect, install, and have proper operational condition all erosion and sediment control systems necessary to ensure compliance with this Order.

5. Special Provisions for Municipal Facilities (POTWs Only) – Not Applicable

6. Other Special Provisions

- a. **Discharges of Storm Water.** For the control of storm water discharged from the site of the wastewater treatment and disposal facilities, if applicable, the Discharger shall seek authorization to discharge under and meet the requirements of the State Water Resources Control Board's Water Quality Order 97-03-DWQ, NPDES General Permit No. CAS000001, *Waste Discharge Requirements for Discharges of Storm Water Associated with Industrial Activities Excluding Construction Activities*.
- b. **Timber Harvesting Plan.** The Discharger shall collect, treat, and monitor all runoff from the timber harvesting site harvested in accordance with the Timber Harvesting Plan (No. 1-04-138 SCR) approved by the Director of Forestry on February 16, 2005.

7. Compliance Schedules – Not Applicable

VII. COMPLIANCE DETERMINATION

Compliance with the effluent limitations contained in section IV of this Order will be determined as specified below:

A. General

Compliance with effluent limitations for priority pollutants shall be determined using sample reporting protocols defined in the MRP and Attachment A of this Order. For purposes of reporting and administrative enforcement by the Regional and State Water Boards, the Discharger shall be deemed out of compliance with effluent limitations if the concentration of the priority pollutant in the monitoring sample is greater than the effluent limitation and greater than or equal to the reporting level (RL).

B. Multiple Sample Data

When determining compliance with a measure of central tendency (arithmetic mean, geometric mean, median, etc.) of multiple sample analyses and the data set contains one or more reported determinations of "Detected, but Not Quantified" (DNQ) or "Not Detected" (ND), the Discharger shall compute the median in place of the arithmetic mean in accordance with the following procedure:

1. The data set shall be ranked from low to high, ranking the reported ND determinations lowest, DNQ determinations next, followed by quantified values (if any). The order of the individual ND or DNQ determinations is unimportant.
2. The median value of the data set shall be determined. If the data set has an odd number of data points, then the median is the middle value. If the data set has an even number of data points, then the median is the average of the two values around the middle unless one or both of the points are ND or DNQ, in which case the median value shall be the lower of the two data points where DNQ is lower than a value and ND is lower than DNQ.

ATTACHMENT A – DEFINITIONS

Arithmetic Mean: Also called the average, is the sum of measured values divided by the number of samples. For ambient water concentrations, the arithmetic mean is calculated as follows:

Arithmetic mean = $\mu = \Sigma x / n$ where: Σx is the sum of the measured ambient water concentrations, and n is the number of samples.

Average Monthly Effluent Limitation (AMEL): the highest allowable average of daily discharges over a calendar month, calculated as the sum of all daily discharges measured during a calendar month divided by the number of daily discharges measured during that month.

Average Weekly Effluent Limitation (AWEL): the highest allowable average of daily discharges over a calendar week (Sunday through Saturday), calculated as the sum of all daily discharges measured during a calendar week divided by the number of daily discharges measured during that week.

Bioaccumulative: those substances taken up by an organism from its surrounding medium through gill membranes, epithelial tissue, or from food and subsequently concentrated and retained in the body of the organism.

Carcinogenic Pollutants: substances that are known to cause cancer in living organisms.

Coefficient of Variation (CV): a measure of the data variability and is calculated as the estimated standard deviation divided by the arithmetic mean of the observed values.

Daily Discharge: Daily Discharge is defined as either: (1) the total mass of the constituent discharged over the calendar day (12:00 am through 11:59 pm) or any 24-hour period that reasonably represents a calendar day for purposes of sampling (as specified in the permit), for a constituent with limitations expressed in units of mass or; (2) the unweighted arithmetic mean measurement of the constituent over the day for a constituent with limitations expressed in other units of measurement (e.g., concentration).

The daily discharge may be determined by the analytical results of a composite sample taken over the course of one day (a calendar day or other 24-hour period defined as a day) or by the arithmetic mean of analytical results from one or more grab samples taken over the course of the day.

For composite sampling, if 1 day is defined as a 24-hour period other than a calendar day, the analytical result for the 24-hour period will be considered as the result for the calendar day in which the 24-hour period ends.

Detected, but Not Quantified (DNQ): those sample results less than the reported Minimum Level, but greater than or equal to the laboratory's MDL.

Dilution Credit: the amount of dilution granted to a discharge in the calculation of a water quality-based effluent limitation, based on the allowance of a specified mixing zone. It is calculated from the dilution ratio or determined through conducting a mixing zone study or modeling of the discharge and receiving water.

Effluent Concentration Allowance (ECA): a value derived from the water quality criterion/objective, dilution credit, and ambient background concentration that is used, in conjunction with the coefficient of variation for the effluent monitoring data, to calculate a long-term average (LTA) discharge concentration. The ECA has the same meaning as waste load allocation (WLA) as used in USEPA guidance (*Technical Support Document For Water Quality-based Toxics Control*, March 1991, second printing, EPA/505/2-90-001).

Enclosed Bays: indentations along the coast that enclose an area of oceanic water within distinct headlands or harbor works. Enclosed bays include all bays where the narrowest distance between headlands or outermost harbor works is less than 75 percent of the greatest dimension of the enclosed portion of the bay. This definition includes but is not limited to: Humboldt Bay, Bodega Harbor, Tomales Bay, Drakes Estero, San Francisco Bay, Morro Bay, Los Angeles Harbor, Upper and Lower Newport Bay, Mission Bay, and San Diego Bay.

Instantaneous Maximum Effluent Limitation: the highest allowable value for any single grab sample or aliquot (i.e., each grab sample or aliquot is independently compared to the instantaneous maximum limitation).

Instantaneous Minimum Effluent Limitation: the lowest allowable value for any single grab sample or aliquot (i.e., each grab sample or aliquot is independently compared to the instantaneous minimum limitation).

Maximum Daily Effluent Limitation (MDEL): the highest allowable daily discharge of a pollutant.

Median: the middle measurement in a set of data. The median of a set of data is found by first arranging the measurements in order of magnitude (either increasing or decreasing order). If the number of measurements (n) is odd, then the median = $X_{(n+1)/2}$. If n is even, then the median = $(X_{n/2} + X_{(n/2)+1})/2$ (i.e., the midpoint between the $n/2$ and $n/2+1$).

MDL (Method Detection Limit): the minimum concentration of a substance that can be measured and reported with 99% confidence that the analyte concentration is greater than zero, as defined in title 40 of the Code of Federal Regulations, PART 136, Appendix B.

Minimum Level (ML): the concentrations at which the entire analytical system must give a recognizable signal and acceptable calibration point. The ML is the concentration in a sample that is equivalent to the concentration of the lowest calibration standard analyzed by a specific analytical procedure, assuming that all the method-specified sample weights, volumes and processing steps have been followed.

Mixing Zone: a limited volume of receiving water that is allocated for mixing with a wastewater discharge where water quality criteria can be exceeded without causing adverse effects to the overall water body.

Not Detected (ND): those sample results less than the laboratory's MDL.

Ocean Waters: the territorial marine waters of the state as defined by California law to the extent these waters are outside of enclosed bays, estuaries, and coastal lagoons. If a discharge outside the territorial waters of the state could affect the quality of the waters of the state, the discharge may be regulated to assure no violation of the Ocean Plan will occur in ocean waters.

Persistent Pollutants: substances for which degradation or decomposition in the environment is nonexistent or very slow.

PCBs (polychlorinated biphenyls): the sum of chlorinated biphenyls whose analytical characteristics resemble those of Aroclor-1016, Aroclor-1221, Aroclor-1232, Aroclor-1242, Aroclor-1248, Aroclor-1254 and Aroclor-1260.

Pollutant Minimization Program (PMP): waste minimization and pollution prevention actions that include, but are not limited to, product substitution, waste stream recycling, alternative waste management methods, and education of the public and businesses. The goal of the PMP shall be to reduce all potential sources of Ocean Plan Table B pollutants through pollutant minimization (control) strategies, including pollution prevention measures as appropriate, to maintain the effluent concentration at or below the water quality-based effluent limitation. Pollution prevention measures may be particularly appropriate for persistent bioaccumulative priority pollutants where there is evidence that beneficial uses are being impacted. The Regional Water Board may consider cost effectiveness when establishing the requirements of a PMP. The completion and implementation of a Pollution Prevention Plan, if required pursuant to Water Code section 13263.3(d), shall be considered to fulfill the PMP requirements.

Pollution Prevention: any action that causes a net reduction in the use or generation of a hazardous substance or other pollutant that is discharged into water and includes, but is not limited to, input change, operational improvement, production process change, and product reformulation (as defined in Water Code section 13263.3). Pollution prevention does not include actions that merely shift a pollutant in wastewater from one environmental medium to another environmental medium, unless clear environmental benefits of such an approach are identified to the satisfaction of the State or Regional Water Board.

Reporting Level (RL): the ML (and its associated analytical method) chosen by the Discharger for reporting and compliance determination from the MLs included in this Order. The MLs included in this Order correspond to approved analytical methods for reporting a sample result that are selected by the Regional Water Board either from Appendix 4 of the SIP in accordance with section 2.4.2 of the SIP or established in accordance with section 2.4.3 of the SIP. The ML is based on the proper application of method-based analytical procedures for sample preparation and the absence of any matrix interferences. Other factors may be applied to the ML depending on the specific sample preparation steps employed. For example, the treatment typically applied in cases where there are matrix-effects is to dilute the sample or sample aliquot by a factor of ten. In such cases, this additional factor must be applied to the ML in the computation of the RL.

Satellite Collection System: the portion, if any, of a sanitary sewer system owned or operated by a different public agency than the agency that owns and operates the wastewater treatment facility that a sanitary sewer system is tributary to.

Source of Drinking Water: any water designated as municipal or domestic supply (MUN) in a Regional Water Board Basin Plan.

Standard Deviation (σ): a measure of variability that is calculated as follows:

$$\sigma = (\Sigma[(x - \mu)^2]/(n - 1))^{0.5}$$

where:

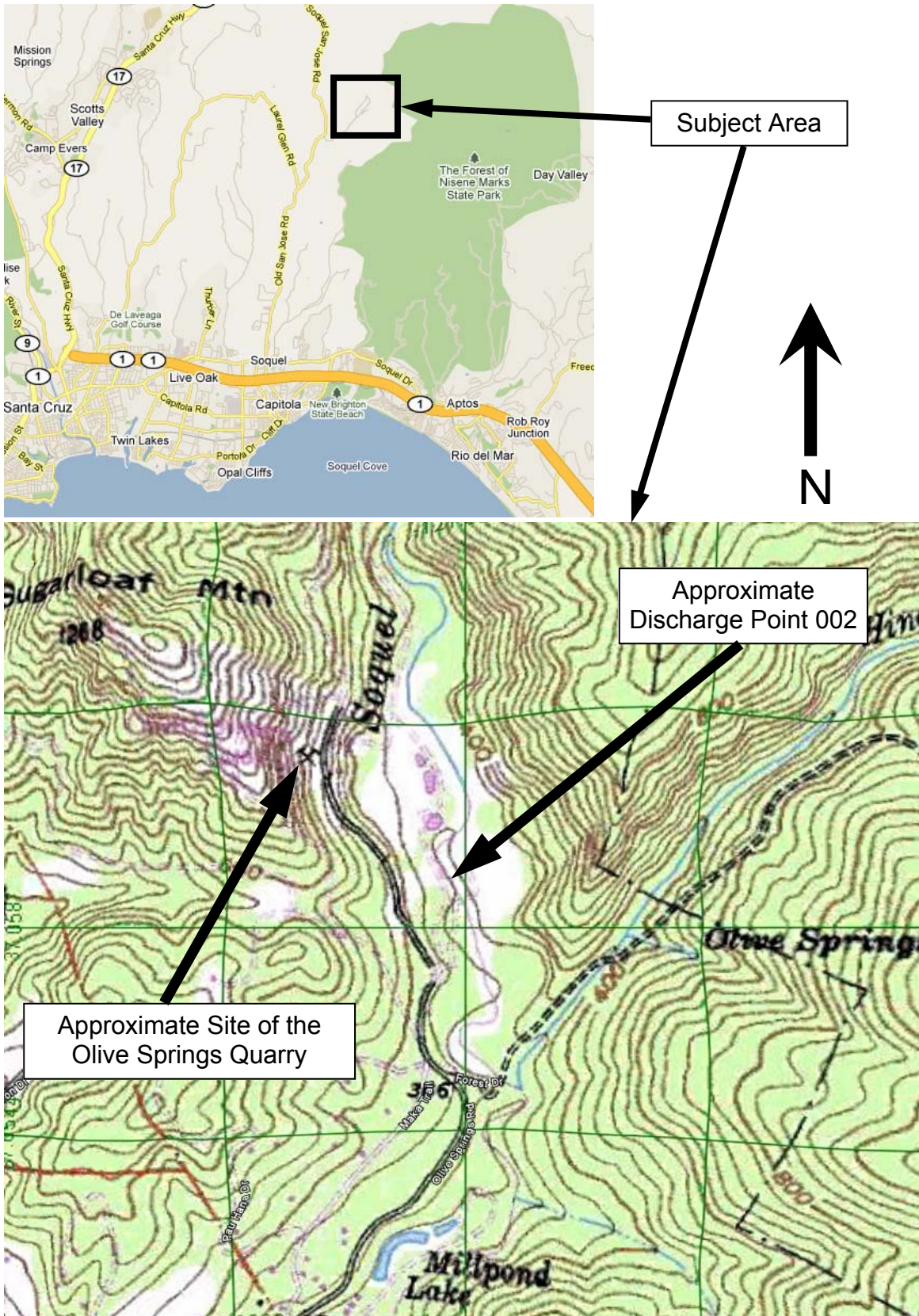
x is the observed value;

μ is the arithmetic mean of the observed values; and

n is the number of samples.

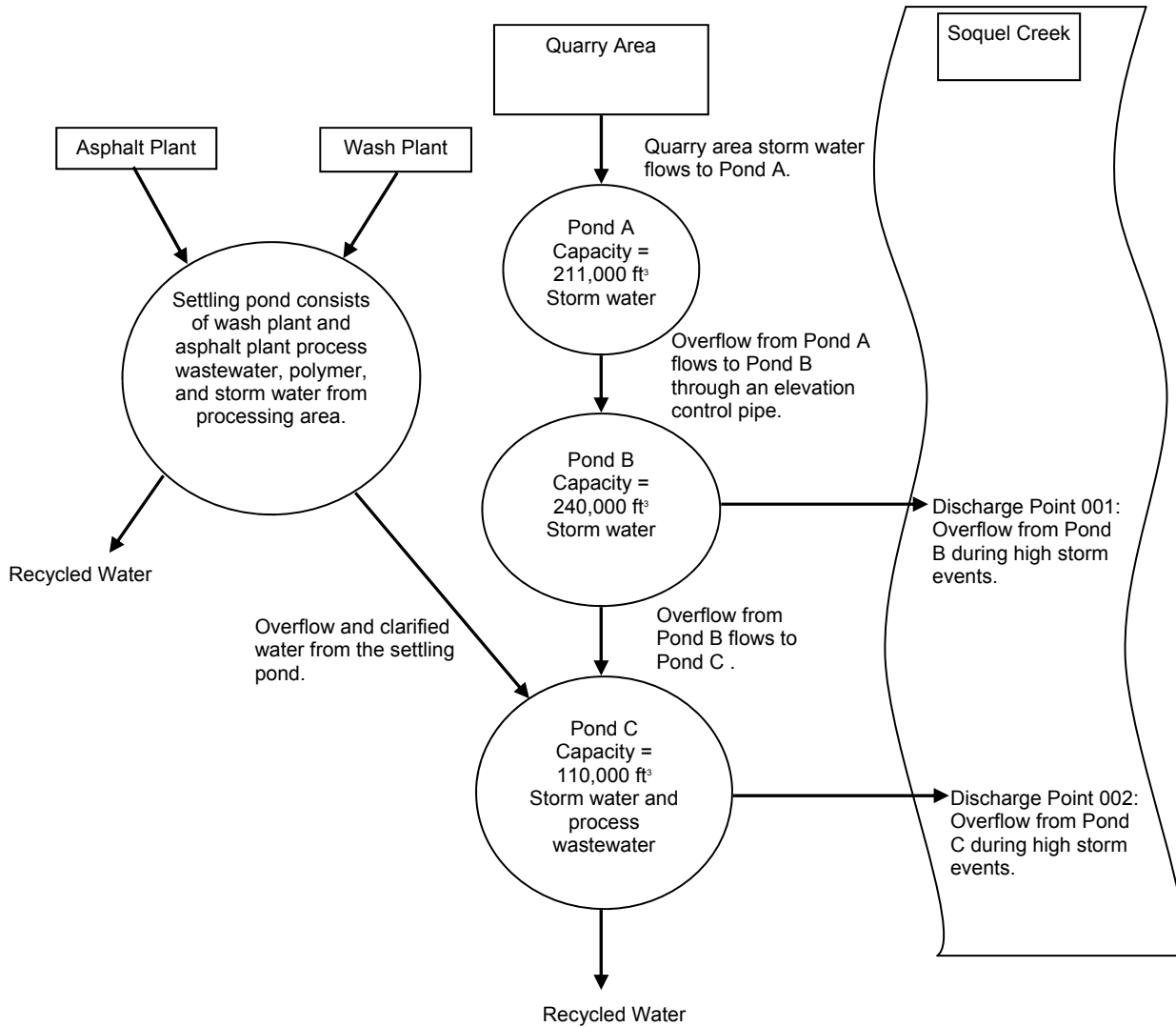
Toxicity Reduction Evaluation (TRE): a study conducted in a step-wise process designed to identify the causative agents of effluent or ambient toxicity, isolate the sources of toxicity, evaluate the effectiveness of toxicity control options, and then confirm the reduction in toxicity. The first steps of the TRE consist of the collection of data relevant to the toxicity, including additional toxicity testing, and an evaluation of facility operations and maintenance practices, and best management practices. A Toxicity Identification Evaluation (TIE) may be required as part of the TRE, if appropriate. (A TIE is a set of procedures to identify the specific chemical(s) responsible for toxicity. These procedures are performed in three phases (characterization, identification, and confirmation) using aquatic organism toxicity tests.)

ATTACHMENT B – MAP



ATTACHMENT C – FLOW SCHEMATIC

Leasehold 1 Schematic



ATTACHMENT D –STANDARD PROVISIONS

I. STANDARD PROVISIONS – PERMIT COMPLIANCE

A. Duty to Comply

1. The Discharger must comply with all of the conditions of this Order. Any noncompliance constitutes a violation of the Clean Water Act (CWA) and the California Water Code and is grounds for enforcement action, for permit termination, revocation and reissuance, or modification; or denial of a permit renewal application. (40 CFR § 122.41(a).)
2. The Discharger shall comply with effluent standards or prohibitions established under section 307(a) of the CWA for toxic pollutants and with standards for sewage sludge use or disposal established under section 405(d) of the CWA within the time provided in the regulations that establish these standards or prohibitions, even if this Order has not yet been modified to incorporate the requirement. (40 CFR § 122.41(a)(1).)

B. Need to Halt or Reduce Activity Not a Defense

It shall not be a defense for a Discharger in an enforcement action that it would have been necessary to halt or reduce the permitted activity in order to maintain compliance with the conditions of this Order. (40 CFR § 122.41(c).)

C. Duty to Mitigate

The Discharger shall take all reasonable steps to minimize or prevent any discharge or sludge use or disposal in violation of this Order that has a reasonable likelihood of adversely affecting human health or the environment. (40 CFR § 122.41(d).)

D. Proper Operation and Maintenance

The Discharger shall at all times properly operate and maintain all facilities and systems of treatment and control (and related appurtenances) which are installed or used by the Discharger to achieve compliance with the conditions of this Order. Proper operation and maintenance also includes adequate laboratory controls and appropriate quality assurance procedures. This provision requires the operation of backup or auxiliary facilities or similar systems that are installed by a Discharger only when necessary to achieve compliance with the conditions of this Order. (40 CFR § 122.41(e).)

E. Property Rights

1. This Order does not convey any property rights of any sort or any exclusive privileges. (40 CFR § 122.41(g).)

2. The issuance of this Order does not authorize any injury to persons or property or invasion of other private rights, or any infringement of state or local law or regulations. (40 CFR § 122.5(c).)

F. Inspection and Entry

The Discharger shall allow the Regional Water Board, State Water Board, United States Environmental Protection Agency (USEPA), and/or their authorized representatives (including an authorized contractor acting as their representative), upon the presentation of credentials and other documents, as may be required by law, to (40 CFR § 122.41(i); Water Code, § 13383):

1. Enter upon the Discharger's premises where a regulated facility or activity is located or conducted, or where records are kept under the conditions of this Order (40 CFR § 122.41(i)(1));
2. Have access to and copy, at reasonable times, any records that must be kept under the conditions of this Order (40 CFR § 122.41(i)(2));
3. Inspect and photograph, at reasonable times, any facilities, equipment (including monitoring and control equipment), practices, or operations regulated or required under this Order (40 CFR § 122.41(i)(3)); and
4. Sample or monitor, at reasonable times, for the purposes of assuring Order compliance or as otherwise authorized by the CWA or the Water Code, any substances or parameters at any location. (40 CFR § 122.41(i)(4).)

G. Bypass

1. Definitions
 - a. "Bypass" means the intentional diversion of waste streams from any portion of a treatment facility. (40 CFR § 122.41(m)(1)(i).)
 - b. "Severe property damage" means substantial physical damage to property, damage to the treatment facilities, which causes them to become inoperable, or substantial and permanent loss of natural resources that can reasonably be expected to occur in the absence of a bypass. Severe property damage does not mean economic loss caused by delays in production. (40 CFR § 122.41(m)(1)(ii).)
2. Bypass not exceeding limitations. The Discharger may allow any bypass to occur which does not cause exceedances of effluent limitations, but only if it is for essential maintenance to assure efficient operation. These bypasses are not subject to the provisions listed in Standard Provisions – Permit Compliance I.G.3, I.G.4, and I.G.5 below. (40 CFR § 122.41(m)(2).)

3. Prohibition of bypass. Bypass is prohibited, and the Regional Water Board may take enforcement action against a Discharger for bypass, unless (40 CFR § 122.41(m)(4)(i)):
 - a. Bypass was unavoidable to prevent loss of life, personal injury, or severe property damage (40 CFR § 122.41(m)(4)(i)(A));
 - b. There were no feasible alternatives to the bypass, such as the use of auxiliary treatment facilities, retention of untreated wastes, or maintenance during normal periods of equipment downtime. This condition is not satisfied if adequate back-up equipment should have been installed in the exercise of reasonable engineering judgment to prevent a bypass that occurred during normal periods of equipment downtime or preventive maintenance (40 CFR § 122.41(m)(4)(i)(B)); and
 - c. The Discharger submitted notice to the Regional Water Board as required under Standard Provisions – Permit Compliance I.G.5 below. (40 CFR § 122.41(m)(4)(i)(C).)
4. The Regional Water Board may approve an anticipated bypass, after considering its adverse effects, if the Regional Water Board determines that it will meet the three conditions listed in Standard Provisions – Permit Compliance I.G.3 above. (40 CFR § 122.41(m)(4)(ii).)
5. Notice
 - a. Anticipated bypass. If the Discharger knows in advance of the need for a bypass, it shall submit a notice, if possible at least 10 days before the date of the bypass. (40 CFR § 122.41(m)(3)(i).)
 - b. Unanticipated bypass. The Discharger shall submit notice of an unanticipated bypass as required in Standard Provisions - Reporting V.E below (24-hour notice). (40 CFR § 122.41(m)(3)(ii).)

H. Upset

Upset means an exceptional incident in which there is unintentional and temporary noncompliance with technology based permit effluent limitations because of factors beyond the reasonable control of the Discharger. An upset does not include noncompliance to the extent caused by operational error, improperly designed treatment facilities, inadequate treatment facilities, lack of preventive maintenance, or careless or improper operation. (40 CFR § 122.41(n)(1).)

1. Effect of an upset. An upset constitutes an affirmative defense to an action brought for noncompliance with such technology based permit effluent limitations if the requirements of Standard Provisions – Permit Compliance I.H.2 below are met. No determination made during administrative review of claims that noncompliance was caused by upset, and before an action for noncompliance, is final administrative action subject to judicial review. (40 CFR § 122.41(n)(2).)

2. Conditions necessary for a demonstration of upset. A Discharger who wishes to establish the affirmative defense of upset shall demonstrate, through properly signed, contemporaneous operating logs or other relevant evidence that (40 CFR § 122.41(n)(3)):
 - a. An upset occurred and that the Discharger can identify the cause(s) of the upset (40 CFR § 122.41(n)(3)(i));
 - b. The permitted facility was, at the time, being properly operated (40 CFR § 122.41(n)(3)(ii));
 - c. The Discharger submitted notice of the upset as required in Standard Provisions – Reporting V.E.2.b below (24-hour notice) (40 CFR § 122.41(n)(3)(iii)); and
 - d. The Discharger complied with any remedial measures required under Standard Provisions – Permit Compliance I.C above. (40 CFR § 122.41(n)(3)(iv).)
3. Burden of proof. In any enforcement proceeding, the Discharger seeking to establish the occurrence of an upset has the burden of proof. (40 CFR § 122.41(n)(4).)

II. STANDARD PROVISIONS – PERMIT ACTION

A. General

This Order may be modified, revoked and reissued, or terminated for cause. The filing of a request by the Discharger for modification, revocation and reissuance, or termination, or a notification of planned changes or anticipated noncompliance does not stay any Order condition. (40 CFR § 122.41(f).)

B. Duty to Reapply

If the Discharger wishes to continue an activity regulated by this Order after the expiration date of this Order, the Discharger must apply for and obtain a new permit. (40 CFR § 122.41(b).)

C. Transfers

This Order is not transferable to any person except after notice to the Regional Water Board. The Regional Water Board may require modification or revocation and reissuance of the Order to change the name of the Discharger and incorporate such other requirements as may be necessary under the CWA and the Water Code. (40 CFR § 122.41(l)(3); § 122.61.)

III. STANDARD PROVISIONS – MONITORING

- A. Samples and measurements taken for the purpose of monitoring shall be representative of the monitored activity. (40 CFR § 122.41(j)(1).)
- B. Monitoring results must be conducted according to test procedures under Part 136 or, in the case of sludge use or disposal, approved under Part 136 unless otherwise specified in Part 503 unless other test procedures have been specified in this Order. (40 CFR § 122.41(j)(4); § 122.44(i)(1)(iv).)

IV. STANDARD PROVISIONS – RECORDS

- A. Except for records of monitoring information required by this Order related to the Discharger's sewage sludge use and disposal activities, which shall be retained for a period of at least five years (or longer as required by Part 503), the Discharger shall retain records of all monitoring information, including all calibration and maintenance records and all original strip chart recordings for continuous monitoring instrumentation, copies of all reports required by this Order, and records of all data used to complete the application for this Order, for a period of at least three (3) years from the date of the sample, measurement, report or application. This period may be extended by request of the Regional Water Board Executive Officer at any time. (40 CFR § 122.41(j)(2).)

B. Records of monitoring information shall include:

1. The date, exact place, and time of sampling or measurements (40 CFR § 122.41(j)(3)(i));
2. The individual(s) who performed the sampling or measurements (40 CFR § 122.41(j)(3)(ii));
3. The date(s) analyses were performed (40 CFR § 122.41(j)(3)(iii));
4. The individual(s) who performed the analyses (40 CFR § 122.41(j)(3)(iv));
5. The analytical techniques or methods used (40 CFR § 122.41(j)(3)(v)); and
6. The results of such analyses. (40 CFR § 122.41(j)(3)(vi).)

C. Claims of confidentiality for the following information will be denied (40 CFR § 122.7(b)):

1. The name and address of any permit applicant or Discharger (40 CFR § 122.7(b)(1)); and
2. Permit applications and attachments, permits and effluent data. (40 CFR § 122.7(b)(2).)

V. STANDARD PROVISIONS – REPORTING

A. Duty to Provide Information

The Discharger shall furnish to the Regional Water Board, State Water Board, or USEPA within a reasonable time, any information which the Regional Water Board, State Water Board, or USEPA may request to determine whether cause exists for modifying, revoking and reissuing, or terminating this Order or to determine compliance with this Order. Upon request, the Discharger shall also furnish to the Regional Water Board, State Water Board, or USEPA copies of records required to be kept by this Order. (40 CFR § 122.41(h); Wat. Code, § 13267.)

B. Signatory and Certification Requirements

1. All applications, reports, or information submitted to the Regional Water Board, State Water Board, and/or USEPA shall be signed and certified in accordance with Standard Provisions – Reporting V.B.2, V.B.3, V.B.4, and V.B.5 below. (40 CFR § 122.41(k).)
2. All permit applications shall be signed by a responsible corporate officer. For the purpose of this section, a responsible corporate officer means: (i) A president, secretary, treasurer, or vice-president of the corporation in charge of a principal business function, or any other person who performs similar policy- or decision-making functions for the corporation, or (ii) the manager of one or more manufacturing, production, or operating facilities, provided, the manager is authorized to make management decisions which govern the operation of the regulated facility including having the explicit or implicit duty of making major capital investment recommendations, and initiating and directing other comprehensive measures to assure long term environmental compliance with environmental laws and regulations; the manager can ensure that the necessary systems are established or actions taken to gather complete and accurate information for permit application requirements; and where authority to sign documents has been assigned or delegated to the manager in accordance with corporate procedures. (40 C.F.R. § 122.22(a)(1).)
3. All reports required by this Order and other information requested by the Regional Water Board, State Water Board, or USEPA shall be signed by a person described in Standard Provisions – Reporting V.B.2 above, or by a duly authorized representative of that person. A person is a duly authorized representative only if:
 - a. The authorization is made in writing by a person described in Standard Provisions – Reporting V.B.2 above (40 CFR § 122.22(b)(1));
 - b. The authorization specifies either an individual or a position having responsibility for the overall operation of the regulated facility or activity such as the position of plant manager, operator of a well or a well field, superintendent, position of equivalent responsibility, or an individual or position having overall responsibility for environmental matters for the company. (A duly authorized representative

may thus be either a named individual or any individual occupying a named position.) (40 CFR § 122.22(b)(2)); and

- c. The written authorization is submitted to the Regional Water Board and State Water Board. (40 CFR § 122.22(b)(3).)
4. If an authorization under Standard Provisions – Reporting V.B.3 above is no longer accurate because a different individual or position has responsibility for the overall operation of the facility, a new authorization satisfying the requirements of Standard Provisions – Reporting V.B.3 above must be submitted to the Regional Water Board and State Water Board prior to or together with any reports, information, or applications, to be signed by an authorized representative. (40 CFR § 122.22(c).)
5. Any person signing a document under Standard Provisions – Reporting V.B.2 or V.B.3 above shall make the following certification:

“I certify under penalty of law that this document and all attachments were prepared under my direction or supervision in accordance with a system designed to assure that qualified personnel properly gather and evaluate the information submitted. Based on my inquiry of the person or persons who manage the system or those persons directly responsible for gathering the information, the information submitted is, to the best of my knowledge and belief, true, accurate, and complete. I am aware that there are significant penalties for submitting false information, including the possibility of fine and imprisonment for knowing violations.” (40 CFR § 122.22(d).)

C. Monitoring Reports

1. Monitoring results shall be reported at the intervals specified in the Monitoring and Reporting Program (Attachment E) in this Order. (40 CFR § 122.41(l)(4).)
2. Monitoring results must be reported on a Discharge Monitoring Report (DMR) form or forms provided or specified by the Regional Water Board or State Water Board for reporting results of monitoring of sludge use or disposal practices. (40 CFR § 122.41(l)(4)(i).)
3. If the Discharger monitors any pollutant more frequently than required by this Order using test procedures approved under Part 136 or, in the case of sludge use or disposal, approved under Part 136 unless otherwise specified in Part 503, or as specified in this Order, the results of this monitoring shall be included in the calculation and reporting of the data submitted in the DMR or sludge reporting form specified by the Regional Water Board. (40 CFR § 122.41(l)(4)(ii).)
4. Calculations for all limitations, which require averaging of measurements, shall utilize an arithmetic mean unless otherwise specified in this Order. (40 CFR § 122.41(l)(4)(iii).)

D. Compliance Schedules

Reports of compliance or noncompliance with, or any progress reports on, interim and final requirements contained in any compliance schedule of this Order, shall be submitted no later than 14 days following each schedule date. (40 CFR § 122.41(l)(5).)

E. Twenty-Four Hour Reporting

1. The Discharger shall report any noncompliance that may endanger health or the environment. Any information shall be provided orally within 24 hours from the time the Discharger becomes aware of the circumstances. A written submission shall also be provided within five (5) days of the time the Discharger becomes aware of the circumstances. The written submission shall contain a description of the noncompliance and its cause; the period of noncompliance, including exact dates and times, and if the noncompliance has not been corrected, the anticipated time it is expected to continue; and steps taken or planned to reduce, eliminate, and prevent reoccurrence of the noncompliance. (40 CFR § 122.41(l)(6)(i).)
2. The following shall be included as information that must be reported within 24 hours under this paragraph (40 CFR § 122.41(l)(6)(ii)):
 - a. Any unanticipated bypass that exceeds any effluent limitation in this Order. (40 CFR § 122.41(l)(6)(ii)(A).)
 - b. Any upset that exceeds any effluent limitation in this Order. (40 CFR § 122.41(l)(6)(ii)(B).)
3. The Regional Water Board may waive the above-required written report under this provision on a case-by-case basis if an oral report has been received within 24 hours. (40 CFR § 122.41(l)(6)(iii).)

F. Planned Changes

The Discharger shall give notice to the Regional Water Board as soon as possible of any planned physical alterations or additions to the permitted facility. Notice is required under this provision only when (40 CFR § 122.41(l)(1)):

1. The alteration or addition to a permitted facility may meet one of the criteria for determining whether a facility is a new source in section 122.29(b) (40 CFR § 122.41(l)(1)(i)); or
2. The alteration or addition could significantly change the nature or increase the quantity of pollutants discharged. This notification applies to pollutants that are not subject to effluent limitations in this Order. (40 CFR § 122.41(l)(1)(ii).)
3. The alteration or addition results in a significant change in the Discharger's sludge use or disposal practices, and such alteration, addition, or change may justify the application of permit conditions that are different from or absent in the existing permit, including notification of additional use or disposal sites not reported during

the permit application process or not reported pursuant to an approved land application plan. (40 CFR § 122.41(l)(1)(iii).)

G. Anticipated Noncompliance

The Discharger shall give advance notice to the Regional Water Board or State Water Board of any planned changes in the permitted facility or activity that may result in noncompliance with General Order requirements. (40 CFR § 122.41(l)(2).)

H. Other Noncompliance

The Discharger shall report all instances of noncompliance not reported under Standard Provisions – Reporting V.C, V.D, and V.E above at the time monitoring reports are submitted. The reports shall contain the information listed in Standard Provision – Reporting V.E above. (40 CFR § 122.41(l)(7).)

I. Other Information

When the Discharger becomes aware that it failed to submit any relevant facts in a permit application, or submitted incorrect information in a permit application or in any report to the Regional Water Board, State Water Board, or USEPA, the Discharger shall promptly submit such facts or information. (40 CFR § 122.41(l)(8).)

VI. STANDARD PROVISIONS – ENFORCEMENT

- A.** The Regional Water Board is authorized to enforce the terms of this permit under several provisions of the Water Code, including, but not limited to, sections 13385, 13386, and 13387.

VII. ADDITIONAL PROVISIONS – NOTIFICATION LEVELS

A. Non-Municipal Facilities

Existing manufacturing, commercial, mining, and silvicultural Dischargers shall notify the Regional Water Board as soon as they know or have reason to believe (40 CFR §122.42(a)):

- 1.** That any activity has occurred or will occur that would result in the discharge, on a routine or frequent basis, of any toxic pollutant that is not limited in this Order, if that discharge will exceed the highest of the following "notification levels" (40 CFR §122.42(a)(1)):
 - a.** 100 micrograms per liter ($\mu\text{g/L}$) (40 CFR §122.42(a)(1)(i));
 - b.** 200 $\mu\text{g/L}$ for acrolein and acrylonitrile; 500 $\mu\text{g/L}$ for 2,4-dinitrophenol and 2-methyl-4,6-dinitrophenol; and 1 milligram per liter (mg/L) for antimony (40 CFR § 122.42(a)(1)(ii));
 - c.** Five (5) times the maximum concentration value reported for that pollutant in the Report of Waste Discharge (40 CFR §122.42(a)(1)(iii)); or

ATTACHMENT D-1 - CENTRAL COAST REGIONAL WATER BOARD STANDARD PROVISIONS (JANUARY 1985)

I. CENTRAL COAST GENERAL PERMIT CONDITIONS

A. Central Coast Standard Provisions – Prohibitions

1. Introduction of "incompatible wastes" to the treatment system is prohibited.
2. Discharge of high-level radiological waste and of radiological, chemical, and biological warfare agents is prohibited.
3. Discharge of "toxic pollutants" in violation of effluent standards and prohibitions established under Section 307(a) of the Clean Water Act is prohibited.
4. Discharge of sludge, sludge digester or thickener supernatant, and sludge drying bed leachate to drainageways, surface waters, or the ocean is prohibited.
5. Introduction of pollutants into the collection, treatment, or disposal system by an "indirect discharger" that:
 - a. Inhibit or disrupt the treatment process, system operation, or the eventual use or disposal of sludge; or,
 - b. Flow through the system to the receiving water untreated; and,
 - c. Cause or "significantly contribute" to a violation of any requirement of this Order, is prohibited.
6. Introduction of "pollutant free" wastewater to the collection, treatment, and disposal system in amounts that threaten compliance with this order is prohibited.

B. Central Coast Standard Provisions – Provisions

1. Collection, treatment, and discharge of waste shall not create a nuisance or pollution, as defined by Section 13050 of the California Water Code.
2. All facilities used for transport or treatment of wastes shall be adequately protected from inundation and washout as the result of a 100-year frequency flood.
3. Operation of collection, treatment, and disposal systems shall be in a manner that precludes public contact with wastewater.
4. Collected screenings, sludges, and other solids removed from liquid wastes shall be disposed in a manner approved by the Executive Officer.
5. Publicly owned wastewater treatment plants shall be supervised and operated by persons possessing certificates of appropriate grade pursuant to Title 23 of the California Administrative Code.

6. After notice and opportunity for a hearing, this order may be terminated for cause, including, but not limited to:
 - a. violation of any term or condition contained in this order;
 - b. obtaining this order by misrepresentation, or by failure to disclose fully all relevant facts;
 - c. a change in any condition or endangerment to human health or environment that requires a temporary or permanent reduction or elimination of the authorized discharge; and,
 - d. a substantial change in character, location, or volume of the discharge.
7. Provisions of this permit are severable. If any provision of the permit is found invalid, the remainder of the permit shall not be affected.
8. After notice and opportunity for hearing, this order may be modified or revoked and reissued for cause, including:
 - a. Promulgation of a new or revised effluent standard or limitation;
 - b. A material change in character, location, or volume of the discharge;
 - c. Access to new information that affects the terms of the permit, including applicable schedules;
 - d. Correction of technical mistakes or mistaken interpretations of law; and,
 - e. Other causes set forth under Sub-part D of 40 CFR Part 122.
9. Safeguards shall be provided to assure maximal compliance with all terms and conditions of this permit. Safeguards shall include preventative and contingency plans and may also include alternative power sources, stand-by generators, retention capacity, operating procedures, or other precautions. Preventative and contingency plans for controlling and minimizing the affect of accidental discharges shall:
 - a. identify possible situations that could cause "upset", "overflow" or "bypass", or other noncompliance. (Loading and storage areas, power outage, waste treatment unit outage, and failure of process equipment, tanks and pipes should be considered.)
 - b. evaluate the effectiveness of present facilities and procedures and describe procedures and steps to minimize or correct any adverse environmental impact resulting from noncompliance with the permit.
10. Physical Facilities shall be designed and constructed according to accepted engineering practice and shall be capable of full compliance with this order when properly operated and maintained. Proper operation and maintenance shall be

described in an Operation and Maintenance Manual. Facilities shall be accessible during the wet-weather season.

11. Production and use of reclaimed water is subject to the approval of the Board. Production and use of reclaimed water shall be in conformance with reclamation criteria established in Chapter 3, Title 22, of the California Administrative Code and Chapter 7, Division 7, of the California Water Code. An engineering report pursuant to section 60323, Title 22, of the California Administrative Code is required and a waiver or water reclamation requirements from the Board is required before reclaimed water is supplied for any use, or to any user, not specifically identified and approved either in this Order or another order issued by this Board.

C. Central Coast Standard Provisions – General Monitoring Requirements

1. If results of monitoring a pollutant appear to violate effluent limitations based on a weekly, monthly, 30-day, or six-month period, but compliance or non-compliance cannot be validated because sampling is too infrequent, the frequency of sampling shall be increased to validate the test within the next monitoring period. The increased frequency shall be maintained until the Executive Officer agrees the original monitoring frequency may be resumed.

For example, if arsenic is monitored annually and results exceed the six-month median numerical effluent limitation in the permit, monitoring of arsenic must be increased to a frequency of at least once every two months (Central Coast Standard Provisions – Definitions I.G.13.). If suspended solids are monitored weekly and results exceed the weekly average numerical limit in the permit, monitoring of suspended solids must be increased to at least four (4) samples every week (Central Coast Standard Provisions – Definitions I.G.14.).

2. Water quality analyses performed in order to monitor compliance with this permit shall be by a laboratory certified by the State Department of Health Services for the constituent(s) being analyzed. Bioassay(s) performed in order to monitor compliance with this permit shall be in accord with guidelines approved by the State Water Resources Control Board and the State Department of Fish and Game. If the laboratory used or proposed for use by the discharger is not certified by the California Department of Health Services or, where appropriate, the Department of Fish and Game due to restrictions in the State's laboratory certification program, the discharger shall be considered in compliance with this provision provided:
 - a. Data results remain consistent with results of samples analyzed by the Central Coast Water Board;
 - b. A quality assurance program is used at the laboratory, including a manual containing steps followed in this program that is available for inspections by the staff of the Central Coast Water Board; and,
 - c. Certification is pursued in good faith and obtained as soon as possible after the program is reinstated.

3. Samples and measurements taken for the purpose of monitoring shall be representative of the monitored activity. Samples shall be taken during periods of peak loading conditions. Influent samples shall be samples collected from the combined flows of all incoming wastes, excluding recycled wastes. Effluent samples shall be samples collected downstream of the last treatment unit and tributary flow and upstream of any mixing with receiving waters.
4. All monitoring instruments and devices used by the discharger to fulfill the prescribed monitoring program shall be properly maintained and calibrated as necessary to ensure their continued accuracy.

D. Central Coast Standard Provisions – General Reporting Requirements

1. Reports of marine monitoring surveys conducted to meet receiving water monitoring requirements of the Monitoring and Reporting Program shall include at least the following information:
 - a. A description of climatic and receiving water characteristics at the time of sampling (weather observations, floating debris, discoloration, wind speed and direction, swell or wave action, time of sampling, tide height, etc.).
 - b. A description of sampling stations, including differences unique to each station (e.g., station location, grain size, rocks, shell litter, calcareous worm tubes, evident life, etc.).
 - c. A description of the sampling procedures and preservation sequence used in the survey.
 - d. A description of the exact method used for laboratory analysis. In general, analysis shall be conducted according to Central Coast Standard Provisions – C.1 above, and Federal Standard Provision – Monitoring III.B. However, variations in procedure are acceptable to accommodate the special requirements of sediment analysis. All such variations must be reported with the test results.
 - e. A brief discussion of the results of the survey. The discussion shall compare data from the control station with data from the outfall stations. All tabulations and computations shall be explained.
2. Reports of compliance or noncompliance with, or any progress reports on, interim and final requirements contained in any compliance schedule shall be submitted within 14 days following each scheduled date unless otherwise specified within the permit. If reporting noncompliance, the report shall include a description of the reason, a description and schedule of tasks necessary to achieve compliance, and an estimated date for achieving full compliance. A second report shall be submitted within 14 days of full compliance.
3. The “Discharger” shall file a report of waste discharge or secure a waiver from the Executive Officer at least 180 days before making any material change or proposed change in the character, location, or plume of the discharge.

4. Within 120 days after the discharger discovers, or is notified by the Central Coast Water Board, that monthly average daily flow will or may reach design capacity of waste treatment and/or disposal facilities within four (4) years, the discharger shall file a written report with the Central Coast Water Board. The report shall include:
 - a. the best estimate of when the monthly average daily dry weather flow rate will equal or exceed design capacity; and,
 - b. a schedule for studies, design, and other steps needed to provide additional capacity for waste treatment and/or disposal facilities before the waste flow rate equals the capacity of present units.

In addition to complying with Federal Standard Provision – Reporting V.B., the required technical report shall be prepared with public participation and reviewed, approved and jointly submitted by all planning and building departments having jurisdiction in the area served by the waste collection, treatment, or disposal facilities.

5. All “Dischargers” shall submit reports to the:

California Regional Water Quality Control Board
Central Coast Region
895 Aerovista Place, Suite 101
San Luis Obispo, CA 93401-7906

In addition, "Dischargers" with designated major discharges shall submit a copy of each document to:

Regional Administrator
US Environmental Protection Agency, Region 9
Attention: CWA Standards and Permits Office (WTR-5)
75 Hawthorne Street
San Francisco, California 94105

6. Transfer of control or ownership of a waste discharge facility must be preceded by a notice to the Central Coast Water Board at least 30 days in advance of the proposed transfer date. The notice must include a written agreement between the existing “Discharger” and proposed “Discharger” containing specific date for transfer of responsibility, coverage, and liability between them. Whether a permit may be transferred without modification or revocation and reissuance is at the discretion of the Board. If permit modification or revocation and reissuance is necessary, transfer may be delayed 180 days after the Central Coast Water Board's receipt of a complete permit application. Please also see Federal Standard Provision – Permit Action II.C.
7. Except for data determined to be confidential under Section 308 of the Clean Water Act (excludes effluent data and permit applications), all reports prepared in accordance with this permit shall be available for public inspection at the office of the

Central Coast Water Board or Regional Administrator of EPA. Please also see Federal Standard Provision – Records IV.C.

8. By January 30th of each year, the discharger shall submit an annual report to the Central Coast Water Board. The report shall contain both tabular and graphical summaries of the monitoring data obtained during the previous year. The discharger shall discuss the compliance record and corrective actions taken, or which may be needed, to bring the discharge into full compliance. The report shall address operator certification and provide a list of current operating personnel and their grade of certification. The report shall inform the Board of the date of the Facility's Operation and Maintenance Manual (including contingency plans as described Central Coast Standard Provision – Provision B.9., above), of the date the manual was last reviewed, and whether the manual is complete and valid for the current facility. The report shall restate, for the record, the laboratories used by the discharger to monitor compliance with effluent limits and provide a summary of performance relative to Section C above, General Monitoring Requirements.

If the facility treats industrial or domestic wastewater and there is no provision for periodic sludge monitoring in the Monitoring and Reporting Program, the report shall include a summary of sludge quantities, analyses of its chemical and moisture content, and its ultimate destination.

If applicable, the report shall also evaluate the effectiveness of the local source control or pretreatment program using the State Water Resources Control Board's "Guidelines for Determining the Effectiveness of Local Pretreatment Programs."

E. Central Coast Standard Provisions – General Pretreatment Provisions

1. Discharge of pollutants by "indirect dischargers" in specific industrial sub-categories (appendix C, 40 CFR Part 403), where categorical pretreatment standards have been established, or are to be established, (according to 40 CFR Chapter 1, Subchapter N), shall comply with the appropriate pretreatment standards:
 - a. By the date specified therein;
 - b. Within three (3) years of the effective date specified therein, but in no case later than July 1, 1984; or,
 - c. If a new indirect discharger, upon commencement of discharge.

F. Central Coast Standard Provisions – Enforcement

1. Any person failing to file a report of waste discharge or other report as required by this permit shall be subject to a civil penalty not to exceed \$5,000 per day.
2. Upon reduction, loss, or failure of the treatment facility, the "Discharger" shall, to the extent necessary to maintain compliance with this permit, control production or all discharges, or both, until the facility is restored or an alternative method of treatment is provided.

G. Central Coast Standard Provisions – Definitions

(Not otherwise included in Attachment A to this Order)

1. A "composite sample" is a combination of no fewer than eight (8) individual samples obtained at equal time intervals (usually hourly) over the specified sampling (composite) period. The volume of each individual sample is proportional to the flow rate at the time of sampling. The period shall be specified in the Monitoring and Reporting Program ordered by the Executive Officer.
2. "Daily Maximum" limit means the maximum acceptable concentration or mass emission rate of a pollutant measured during a calendar day or during any 24-hour period reasonably representative of the calendar day for purposes of sampling. It is normally compared with results based on "composite samples" except for ammonia, total chlorine, phenolic compounds, and toxicity concentration. For all exceptions, comparisons will be made with results from a "grab sample".
3. "Discharger", as used herein, means, as appropriate: (1) the Discharger, (2) the local sewerage entity (when the collection system is not owned and operated by the Discharger), or (3) "indirect discharger" (where "Discharger" appears in the same paragraph as "indirect discharger", it refers to the discharger.)
4. "Duly Authorized Representative" is one where:
 - a. the authorization is made in writing by a person described in the signatory paragraph of Federal Standard Provision V.B.;
 - b. the authorization specifies either an individual or the occupant of a position having either responsibility for the overall operation of the regulated facility, such as the plant manager, or overall responsibility for environmental matters of the company; and,
 - c. the written authorization was submitted to the Central Coast Water Board.
5. A "grab sample" is defined as any individual sample collected in less than 15 minutes. "Grab samples" shall be collected during peak loading conditions, which may or may not be during hydraulic peaks. It is used primarily in determining compliance with the daily maximum limits identified in Central Coast Standard Provision – Provision G.2. and instantaneous maximum limits.
6. "Hazardous substance" means any substance designated under 40 CFR Part 116 pursuant to Section 311 of the Clean Water Act.
7. "Incompatible wastes" are:
 - a. Wastes which create a fire or explosion hazard in the treatment works;

- b. Wastes which will cause corrosive structural damage to treatment works, but in no case wastes with a pH lower than 5.0 unless the works is specifically designed to accommodate such wastes;
 - c. Solid or viscous wastes in amounts which cause obstruction to flow in sewers, or which cause other interference with proper operation of treatment works;
 - d. Any waste, including oxygen demanding pollutants (BOD, etc), released in such volume or strength as to cause inhibition or disruption in the treatment works and subsequent treatment process upset and loss of treatment efficiency; and,
 - e. Heat in amounts that inhibit or disrupt biological activity in the treatment works or that raise influent temperatures above 40°C (104°F) unless the treatment works is designed to accommodate such heat.
8. "Indirect Discharger" means a non-domestic discharger introducing pollutants into a publicly owned treatment and disposal system.
9. "Log Mean" is the geometric mean. Used for determining compliance of fecal or total coliform populations, it is calculated with the following equation:

$$\text{Log Mean} = (C_1 \times C_2 \times \dots \times C_n)^{1/n},$$

in which "n" is the number of days samples were analyzed during the period and any "C" is the concentration of bacteria (MPN/100 ml) found on each day of sampling. "n" should be five or more.

10. "Mass emission rate" is a daily rate defined by the following equations:

$$\text{mass emission rate (lbs/day)} = 8.34 \times Q \times C; \text{ and,}$$

$$\text{mass emission rate (kg/day)} = 3.79 \times Q \times C,$$

where "C" (in mg/L) is the measured daily constituent concentration or the average of measured daily constituent concentrations and "Q" (in MGD) is the measured daily flow rate or the average of measured daily flow rates over the period of interest.

11. The "Maximum Allowable Mass Emission Rate," whether for a month, week, day, or six-month period, is a daily rate determined with the formulas in paragraph G.10, above, using the effluent concentration limit specified in the permit for the period and the average of measured daily flows (up to the allowable flow) over the period.
12. "Maximum Allowable Six-Month Median Mass Emission Rate" is a daily rate determined with the formulas in Central Coast Standard Provision – Provision G.10, above, using the "six-month Median" effluent limit specified in the permit, and the average of measured daily flows (up to the allowable flow) over a 180-day period.
13. "Median" is the value below which half the samples (ranked progressively by increasing value) fall. It may be considered the middle value, or the average of two middle values.

14. "Monthly Average" (or "Weekly Average", as the case may be) is the arithmetic mean of daily concentrations or of daily mass emission rates over the specified 30-day (or 7-day) period.

$$\text{Average} = (X1 + X2 + \dots + Xn) / n$$

in which "n" is the number of days samples were analyzed during the period and "X" is either the constituent concentration (mg/l) or mass emission rate (kg/day or lbs/day) for each sampled day. "n" should be four or greater.

15. "Municipality" means a city, town, borough, county, district, association, or other public body created by or under State law and having jurisdiction over disposal of sewage, industrial waste, or other waste.
16. "Overflow" means the intentional or unintentional diversion of flow from the collection and transport systems, including pumping facilities.
17. "Pollutant-free wastewater" means inflow and infiltration, storm waters, and cooling waters and condensates which are essentially free of pollutants.
18. "Primary Industry Category" means any industry category listed in 40 CFR Part 122, Appendix A.
19. "Removal Efficiency" is the ratio of pollutants removed by the treatment unit to pollutants entering the treatment unit. Removal efficiencies of a treatment plant shall be determined using "Monthly averages" of pollutant concentrations (C, in mg/l) of influent and effluent samples collected about the same time and the following equation (or its equivalent):
- $$C_{\text{Effluent}} \text{ Removal Efficiency (\%)} = 100 \times (1 - C_{\text{effluent}} / C_{\text{influent}})$$
20. "Severe property damage" means substantial physical damage to property, damage to treatment facilities which causes them to become inoperable, or substantial and permanent loss to natural resources which can reasonably be expected to occur in the absence of a "bypass". It does not mean economic loss caused by delays in production.
21. "Sludge" means the solids, residues, and precipitates separated from, or created in, wastewater by the unit processes of a treatment system.
22. To "significantly contribute" to a permit violation means an "indirect discharger" must:
- Discharge a daily pollutant loading in excess of that allowed by contract with the "Discharger" or by Federal, State, or Local law;
 - Discharge wastewater which substantially differs in nature or constituents from its average discharge;

- c. Discharge pollutants, either alone or in conjunction with discharges from other sources, which results in a permit violation or prevents sewage sludge use or disposal; or
 - d. Discharge pollutants, either alone or in conjunction with pollutants from other sources that increase the magnitude or duration of permit violations.
23. "Toxic Pollutant" means any pollutant listed as toxic under Section 307 (a) (1) of the Clean Water Act or under 40 CFR Part 122, Appendix D. Violation of maximum daily discharge limitations are subject to 24-hour reporting (Federal Standard Provisions V.E.).
24. "Zone of Initial Dilution" means the region surrounding or adjacent to the end of an outfall pipe or diffuser ports whose boundaries are defined through calculation of a plume model verified by the State Water Resources Control Board

ATTACHMENT E – MONITORING AND REPORTING PROGRAM

Table of Contents

I.	General Monitoring Provisions.....	E-2
II.	Monitoring Locations	E-3
III.	Influent Monitoring Requirements – Not Applicable.....	E-4
IV.	Effluent Monitoring Requirements	E-4
	A. Monitoring Location EFF-002.....	E-4
V.	Whole Effluent Toxicity Testing Requirements	E-5
	A. Acute Toxicity	E-5
	B. Quality Assurance.....	E-5
	C. Accelerated Monitoring Requirements	E-6
	D. Conducting Toxicity Identification Evaluations and Toxicity Reduction Evaluations	E-6
VI.	Land Discharge Monitoring Requirements – Not Applicable	E-7
VII.	Reclamation Monitoring Requirements – Not Applicable.....	E-7
VIII.	Receiving Water Monitoring Requirements – Surface Water.....	E-7
	A. Receiving Water Monitoring.....	E-7
IX.	Other Monitoring Requirements – Not applicable	E-8
X.	Reporting Requirements.....	E-8
	A. General Monitoring and Reporting Requirements.....	E-8
	B. Self Monitoring Reports (SMRs)	E-8
	C. Discharge Monitoring Reports (DMRs) – Not Applicable	E-10
	D. Other Reports	E-10

List of Tables

Table E-1.	Monitoring Station Locations	E-3
Table E-2.	Effluent Monitoring	E-4
Table E-3.	Approved Tests – Acute Toxicity	E-5
Table E-4.	Receiving Water Monitoring Requirements	E-7
Table E-5.	Monitoring Periods and Reporting Schedule.....	E-8

ATTACHMENT E – MONITORING AND REPORTING PROGRAM (MRP)

NPDES regulations at 40 CFR 122.48 require that all NPDES permits specify monitoring and reporting requirements. Water Code sections 13267 and 13383 also authorize the Regional Water Quality Control Board (Regional Water Board) to require technical and monitoring reports. This MRP establishes monitoring and reporting requirements, which implement the federal and California regulations.

I. GENERAL MONITORING PROVISIONS

- A.** Laboratories analyzing monitoring samples shall be certified by the Department of Health Services (DHS), in accordance with Water Code section 13176, and must include quality assurance/quality control data with their reports.
- B.** Samples and measurements taken as required herein shall be representative of the volume and nature of the monitored discharge. All samples shall be taken at the monitoring locations specified below and, unless otherwise specified, before the monitored flow joins or is diluted by any other waste stream, body of water, or substance. Monitoring locations shall not be changed without notification to and approval of the Regional Water Board.
- C.** Appropriate flow measurement devices and methods consistent with accepted scientific practices shall be selected and used to ensure the accuracy and reliability of measurements of the volume of monitored discharges. The devices shall be installed, calibrated, and maintained to ensure that the accuracy of the measurements is consistent with the accepted capability of that type of device. Devices selected shall be capable of measuring flows with a maximum deviation of less than ± 10 percent from true discharge rates throughout the range of expected discharge volumes. Guidance in selection, installation, calibration, and operation of acceptable flow measurement devices can be obtained from the following references.
 - 1.** *A Guide to Methods and Standards for the Measurement of Water Flow*, U.S. Department of Commerce, National Bureau of Standards, NBS Special Publication 421, May 1975, 96 pp. (Available from the U.S. Government Printing Office, Washington, D.C. 20402. Order by SD Catalog No. C13.10:421.)
 - 2.** *Water Measurement Manual*, U.S. Department of Interior, Bureau of Reclamation, Second Edition, Revised Reprint, 1974, 327 pp. (Available from the U.S. Government Printing Office, Washington D.C. 20402. Order by Catalog No. 172.19/2:W29/2, Stock No. S/N 24003-0027.)
 - 3.** *Flow Measurement in Open Channels and Closed Conduits*, U.S. Department of Commerce, National Bureau of Standards, NBS Special Publication 484, October 1977, 982 pp. (Available in paper copy or microfiche from National Technical Information Services (NTIS) Springfield, VA 22151. Order by NTIS No. PB-273 535/5ST.)

4. NPDES Compliance Sampling Manual, U.S. Environmental Protection Agency, Office of Water Enforcement, Publication MCD-51, 1977, 140 pp. (Available from the General Services Administration (8FFS), Centralized Mailing Lists Services, Building 41, Denver Federal Center, CO 80225.)
- D. All monitoring instruments and devices used by the Discharger to fulfill the prescribed monitoring program shall be properly maintained and calibrated as necessary to ensure their continued accuracy. All flow measurement devices shall be calibrated at least once per year to ensure continued accuracy of the devices.
 - E. Monitoring results, including noncompliance, shall be reported at intervals and in a manner specified in this MRP.
 - F. Unless otherwise specified by this MRP, all monitoring shall be conducted according to test procedures established at 40 CFR 136, *Guidelines Establishing Test Procedures for Analysis of Pollutants*. All analyses shall be conducted using the lowest practical quantitation limit achievable using the specified methodology. Where effluent limitations are set below the lowest achievable quantitation limits, pollutants not detected at the lowest practical quantitation limits will be considered in compliance with effluent limitations. Analysis for toxics listed by the California Toxics Rule shall also adhere to guidance and requirements contained in the *Policy for Implementation of Toxics Standards for Inland Surface Waters, Enclosed Bays, and Estuaries of California* (2005). Analyses for toxics listed in Table B of the California Ocean Plan (2005) shall adhere to guidance and requirements contained in that document.

II. MONITORING LOCATIONS

The Discharger shall establish the following monitoring locations to demonstrate compliance with the effluent limitations, discharge specifications, and other requirements in this Order:

Table E-1. Monitoring Station Locations

Discharge Point Name	Monitoring Location Name	Monitoring Location Description
002	EFF-002	Pond C at the discharge point to Soquel Creek; 37°03'30" N latitude, 121°55'15"W longitude
--	RSW-001	In Soquel Creek, upstream of Discharge Point 002, where a representative sample for determination of background water quality can be taken.
--	RSW-002	In Soquel Creek, downstream of Discharge Point 002, where a representative sample for determination of impacts to receiving water quality due to discharges from Discharge Point 002 can be taken.

III. INFLUENT MONITORING REQUIREMENTS – NOT APPLICABLE

IV. EFFLUENT MONITORING REQUIREMENTS

A. Monitoring Location EFF-002

1. The Discharger shall monitor effluent discharged to Soquel Creek at Monitoring Location EFF-002 as follows. Monitoring is required only when effluent is being discharged to the Soquel Creek. If no discharge occurs within the sampling interval specified below, samples shall be collected at the first discharge event following the specified interval and at the specified sampling frequency thereafter.

Table E-2. Effluent Monitoring

Parameter	Units	Sample Type	Minimum Sampling Frequency
Flow	MGD	Measured	1/Day
Total Suspended Solids (TSS)	mg/L	Grab	1/Week ^[1]
Settleable Solids	ml/L	Grab	1/Week ^[1]
Turbidity	NTUs	Grab	1/Week ^[1]
pH	s.u.	Grab	1/Week ^[1]
Temperature	°F	Grab	1/Week ^[1]
Acute Toxicity	TU	Grab	1/2 Year ^{[1],[2]}
Aluminum, Total Recoverable	mg/L	Grab	1/2 Year ^{[1],[2]}
Arsenic, Total Recoverable	µg/L	Grab	1/2 Year ^{[1],[2]}
Barium, Total Recoverable	mg/L	Grab	1/2 Year ^{[1],[2]}
Cadmium, Total Recoverable	µg/L	Grab	1/2 Year ^{[1],[2]}
Chromium (VI), Total Recoverable	µg/L	Grab	1/2 Year ^{[1],[2]}
Copper, Total Recoverable	µg/L	Grab	1/2 Year ^{[1],[2]}
Lead, Total Recoverable	µg/L	Grab	1/2 Year ^{[1],[2]}
Mercury, Total Recoverable	µg/L	Grab	1/2 Year ^{[1],[2]}
Nickel, Total Recoverable	µg/L	Grab	1/2 Year ^{[1],[2]}
Selenium, Total Recoverable	µg/L	Grab	1/2 Year ^{[1],[2]}
Silver, Total Recoverable	µg/L	Grab	1/2 Year ^{[1],[2]}
Zinc, Total Recoverable	µg/L	Grab	1/2 Year ^{[1],[2]}
Acute Toxicity	TUa	Grab	1/Discharge Event
CTR Priority Pollutants ^[3]	µg/L	Grab	1/Year
Title 22 Pollutants ^[4]	µg/L	Grab	1/Year

^[1] Weekly and biannual samples shall be collected during the first day of a discharge event.

^[2] Samples shall be collected from Discharge Point 002 during the first discharge event following adoption of the Order and then at 2-year intervals thereafter.

^[3] The CTR priority pollutants are those listed by the California Toxics Rule at 40 CFR 131.38 (b)(1). These pollutants shall be monitored one time per year, if there is a discharge event in each year.

^[4] The Title 22 pollutants are those for which primary Maximum Contaminant Levels have been established by the Department of Health Services and which are listed in Tables 64431-A and 64444-A of the California Code of Regulations, Title 22, Division 4, Chapter 15. Where these pollutants are included in other groups of pollutants (CTR Priority Pollutants), monitoring does not need to be duplicated.

V. WHOLE EFFLUENT TOXICITY TESTING REQUIREMENTS

A. Acute Toxicity

1. Acute Toxicity Monitoring Requirements - EFF-002
 - a. Bioassays shall be performed to evaluate the toxicity of the discharge in accordance with the following procedures unless otherwise specified by the Water Board’s Executive Officer or designee.
 - b. The test species given below shall be used to measure acute toxicity:

Table E-3. Approved Tests – Acute Toxicity

Species	Effect	Test Duration (days)	Reference
Fathead Minnow (<i>Pimephales promelas</i>)	Larval Survival and Growth	7	EPA/821-R-02-012 (Acute)

- c. The presence of acute toxicity shall be determined as significantly reduced survival of test organisms at 100 percent effluent compared to a control using a statistical t-test.

B. Quality Assurance

1. The use of a dilution series for this Discharger is not applicable, because there is no dilution in the receiving water.
2. For the acute toxicity testing using a t-test, two dilutions shall be used, i.e., 100 percent effluent and a control (when a t-test is used instead of an LC50).
3. If organisms are not cultured in-house, concurrent testing with a referenced toxicant shall be conducted. Where organisms are cultured in-house, monthly reference toxicant testing is sufficient. Reference toxicant tests also shall be conducted using the same test conditions as the effluent toxicity tests (e.g., same test duration, etc.).
4. If either the reference toxicant test or effluent test does not meet all test acceptability criteria (TAC) as specified in the toxicity test references, then the permittee must resample and retest within 15 working days or as soon as possible. The retesting period begins when the Discharger collects the first sample required to complete the retest.
5. The reference toxicant and effluent tests must meet the upper and lower bounds on test sensitivity as determined by calculating the percent minimum significant difference (PMSD) for each test result. The test sensitivity bound is specified for each test method in the respective methods manuals.

C. Accelerated Monitoring Requirements

1. When acute toxicity is detected in the effluent during regular toxicity monitoring, and the testing meets all test acceptability criteria, the Discharger shall initiate accelerated monitoring to confirm the effluent toxicity.
2. The Discharger shall implement an accelerated monitoring frequency consisting of performing three toxicity tests in a six-week period following the first failed test results.
3. If implementation of the generic Toxicity Reduction Evaluation (TRE) work plan indicates the source of the exceedance of the toxicity trigger (for instance, a temporary plant upset), then only one additional test is necessary. If exceedance of the toxicity trigger is detected in this test, the Discharger will continue with accelerated monitoring requirements or implement the Toxicity Identification and Toxicity Reduction Evaluations.
4. If none of the three tests indicated exceedance of the toxicity trigger, then the Discharger may return to the normal bioassay testing frequency.

D. Conducting Toxicity Identification Evaluations and Toxicity Reduction Evaluations

1. A Toxicity Identification Evaluation (TIE) shall be triggered if testing from the accelerated monitoring frequency indicates any of the following:
 - a. Two of the three accelerated toxicity tests are reported as failed tests meeting any of the conditions specified in Attachment E, Section V.D.
 - b. The TIE shall be initiated within 15 days following failure of the second accelerated monitoring test.
 - c. If a TIE is triggered prior to the completion of the accelerated testing, the accelerated testing schedule may be terminated, or used as necessary in performing the TIE.
2. The TIE shall be conducted to identify and evaluate toxicity in accordance with procedures recommended by the United States Environmental Protection Agency (USEPA) which include the following:
 - a. Toxicity Identification Evaluation: Characterization of Chronically Toxic Effluents, Phase I, (USEPA, 1992a);
 - b. Methods for Aquatic Toxicity Identification Evaluations: Phase I Toxicity Characterization Procedures, Second Edition (USEPA, 1991a);
 - c. Methods for Aquatic Toxicity Identification Evaluations: Phase II Toxicity Identification Procedures for Sampling Exhibiting Acute and Chronic Toxicity (USEPA, 1993a); and

- d. Methods for Aquatic Toxicity Identification Evaluations: Phase III Toxicity Confirmation Procedures for Samples Exhibiting Acute and Chronic Toxicity (USEPA, 1993b).
3. As part of the TIE investigation, the Discharger shall be required to implement its TRE work plan. The Discharger shall take all reasonable steps to control toxicity once the source of the toxicity is identified. A failure to conduct required toxicity tests or a TRE within a designated period shall result in the establishment of numerical effluent limitations for chronic toxicity in a permit or appropriate enforcement action. Recommended guidance in conducting a TRE include the following:
- a. Toxicity Reduction Evaluation Guidance for Municipal Wastewater Treatment Plants, August 1999, EPA/833B-99/002; and
 - b. Clarifications Regarding Toxicity Reduction and Identification Evaluations in the National Pollutant Discharge Elimination System Program dated March 27, 2001, USEPA Office of Wastewater Management, Office of Regulatory Enforcement.

VI. LAND DISCHARGE MONITORING REQUIREMENTS – NOT APPLICABLE

VII. RECLAMATION MONITORING REQUIREMENTS – NOT APPLICABLE

VIII. RECEIVING WATER MONITORING REQUIREMENTS – SURFACE WATER

A. Receiving Water Monitoring

1. The Discharger shall monitor the Soquel Creek at Monitoring Stations RSW-001 and RSW-002 as follows,

Table E-4. Receiving Water Monitoring Requirements

Parameter	Units	Sample Type	Minimum Sampling Frequency
Dissolved Oxygen	mg/L	Field Measurement	1/Month ^[1]
Visual Observations	-	Field Observation	1/Month ^[1]
Turbidity	NTU	Grab	1/Month ^[1]
Total Suspended Solids (TSS)	mg/L	Grab	1/Month ^[1]
Settleable Solids	ml/L	Grab	1/Month ^[1]
Hardness (as CaCO ₃)	mg/L	Grab	1/Year ^[2]
Metals ^[3]	µg/L	Grab	1/Permit Term

^[1] This monitoring schedule assumes that storm water discharges will occur only during the California rainy season. Monthly and annual samples, therefore, shall be collected only during the rainy season (October through April). The Discharger shall make reasonable efforts to collect monthly receiving water samples during periods of discharge of process water and/or storm water from the Facility.

^[2] Hardness shall be monitored at RSW-002 only.

^[3] Metals are those with numeric effluent limitations (aluminum, arsenic, barium, cadmium, chromium, copper, lead, mercury, nickel, selenium, silver, and zinc). Metals shall be monitored at Monitoring Location RSW-001, only one time during the term of Order R3-2010-0039. Metals concentrations in receiving water will be used to compare background conditions with metals concentrations in discharges from Discharge Point 002. Because this monitoring schedule assumes that discharges from Discharge Point 002 will occur only during the California rainy season, receiving water samples for metals analysis shall be collected between October and April.

IX. OTHER MONITORING REQUIREMENTS – NOT APPLICABLE

X. REPORTING REQUIREMENTS

A. General Monitoring and Reporting Requirements

1. The Discharger shall comply with all Standard Provisions (Attachment D) related to monitoring, reporting, and recordkeeping.

B. Self Monitoring Reports (SMRs)

1. The Discharger shall electronically submit Self-Monitoring Reports (SMRs) using the State Water Board’s California Integrated Water Quality System (CIWQS) Program Web site (<http://www.waterboards.ca.gov/ciwqs/index.html>). The CIWQS Web site will provide additional directions for SMR submittal in the event there will be service interruption for electronic submittal.
2. The Discharger shall report in the SMR the results for all monitoring specified in this MRP under sections III through IX. The Discharger shall submit quarterly SMRs including the results of all required monitoring using USEPA-approved test methods or other test methods specified in this Order. If the Discharger monitors any pollutant more frequently than required by this Order, the results of this monitoring shall be included in the calculations and reporting of the data submitted in the SMR.

If no discharge occurs during the monitoring period, a statement to that effect may be sent in lieu of the SMR.

3. Monitoring periods and reporting for all required monitoring shall be completed according to the following schedule:

Table E-5. Monitoring Periods and Reporting Schedule

Sampling Frequency	Monitoring Period Begins On ...	Monitoring Period	SMR Due Date
1/Day	Permit effective date	(Midnight through 11:59 PM) or any 24-hour period that reasonably represents a calendar day for purposes of sampling.	Submit with quarterly SMR
1/Week	Sunday following permit effective date or on permit effective date if on a Sunday	Sunday through Saturday	Submit with quarterly SMR
1/Month	First day of calendar month following permit effective date or on permit effective date if that date is first day of the month	1 st day of calendar month through last day of calendar month	Submit with quarterly SMR
1/Year	January 1 following (or on) permit effective date	January 1 through December 31	Submit with Annual Report
1/2 Year	January 1 following (or on) permit effective date	January 1 through December 31 of the following year	Submit with Annual Report
X/Permit Term	January 1 following (or on) permit effective date	Permit term	Submit with Annual Report

4. Reporting Protocols. The Discharger shall report with each sample result the applicable reported Minimum Level (ML) and the current Method Detection Limit (MDL), as determined by the procedure in Part 136.

The Discharger shall report the results of analytical determinations for the presence of chemical constituents in a sample using the following reporting protocols:

- a. Sample results greater than or equal to the reported ML shall be reported as measured by the laboratory (i.e., the measured chemical concentration in the sample).
- b. Sample results less than the reported ML, but greater than or equal to the laboratory's MDL, shall be reported as "Detected, but Not Quantified," or DNQ. The estimated chemical concentration of the sample shall also be reported.

For the purposes of data collection, the laboratory shall write the estimated chemical concentration next to DNQ as well as the words "Estimated Concentration" (may be shortened to "Est. Conc."). The laboratory may, if such information is available, include numerical estimates of the data quality for the reported result. Numerical estimates of data quality may be percent accuracy (\pm a percentage of the reported value), numerical ranges (low to high), or any other means considered appropriate by the laboratory.

- c. Sample results less than the laboratory's MDL shall be reported as "Not Detected," or ND.
 - d. Dischargers are to instruct laboratories to establish calibration standards so that the ML value (or its equivalent if there is differential treatment of samples relative to calibration standards) is the lowest calibration standard. At no time is the Discharger to use analytical data derived from *extrapolation* beyond the lowest point of the calibration curve.
5. Compliance Determination. Compliance with effluent limitations for priority pollutants shall be determined using sample reporting protocols defined above and Attachment A of this Order. For purposes of reporting and administrative enforcement by the Regional and State Water Boards, the Discharger shall be deemed out of compliance with effluent limitations if the concentration of the priority pollutant in the monitoring sample is greater than the effluent limitation and greater than or equal to the reporting level (RL).
 6. Multiple Sample Data. When determining compliance with an AMEL, AWEL, or MDEL for priority pollutants and more than one sample result is available, the Discharger shall compute the arithmetic mean unless the data set contains one or more reported determinations of "Detected, but Not Quantified" (DNQ) or "Not Detected" (ND). In those cases, the Discharger shall compute the median in place of the arithmetic mean in accordance with the following procedure:

- a. The data set shall be ranked from low to high, ranking the reported ND determinations lowest, DNQ determinations next, followed by quantified values (if any). The order of the individual ND or DNQ determinations is unimportant.
 - b. The median value of the data set shall be determined. If the data set has an odd number of data points, then the median is the middle value. If the data set has an even number of data points, then the median is the average of the two values around the middle unless one or both of the points are ND or DNQ, in which case the median value shall be the lower of the two data points where DNQ is lower than a value and ND is lower than DNQ.
7. The Discharger shall submit SMRs in accordance with the following requirements:
- a. The Discharger shall arrange all reported data in a tabular format. The data shall be summarized to clearly illustrate whether the facility is operating in compliance with interim and/or final effluent limitations. The Discharger is not required to duplicate the submittal of data that is entered in a tabular format within CIWQS. When electronic submittal of data is required and CIWQS does not provide for entry into a tabular format within the system, the Discharger shall electronically submit the data in a tabular format as an attachment.
 - b. The Discharger shall attach a cover letter to the SMR. The information contained in the cover letter shall clearly identify violations of the WDRs; discuss corrective actions taken or planned; and the proposed time schedule for corrective actions. Identified violations must include a description of the requirement that was violated and a description of the violation.
 - c. SMRs must be submitted to the Regional Water Board, signed and certified as required by the Standard Provisions (Attachment D), to the address listed below:

Central Coast Regional Water Quality Control Board
895 Aerovista Place, Suite 101
San Luis Obispo, California 93401
 - d. The Annual Report (I.D.8, Page D-16) due on January 30th following each calendar year shall also include:
 - i. All data required by this MRP for the corresponding monitoring period, including appropriate calculations to verify compliance with effluent limitations.
 - ii. A discussion of any incident of non-compliance and corrective actions taken.

C. Discharge Monitoring Reports (DMRs) – Not Applicable

D. Other Reports

1. In accordance with Special Provision VI.C.4.a of the Order, the Discharger shall certify by October 1 of each year that necessary measures have been taken and

pollution control equipment and systems are in proper condition to comply with the terms of the Order during the impending rainy season.

2. The Discharger shall report the results of any special monitoring, TREs, or other data or information that results from the Special Provisions, section VI.C, of the Order. The Discharger shall submit such reports with the first quarterly SMR scheduled to be submitted on or immediately following the report due date.

ATTACHMENT F – FACT SHEET

Table of Contents

I.	Permit Information	3
II.	Facility Description	4
	A. Description of Wastewater and Biosolids Treatment or Controls	4
	B. Discharge Points and Receiving Waters.....	5
	C. Summary of Existing Requirements and Self-Monitoring Report (SMR) Data	5
	D. Compliance Summary.....	6
	E. Planned Changes – Not Applicable	6
III.	Applicable Plans, Policies, and Regulations.....	7
	A. Legal Authorities	7
	B. California Environmental Quality Act (CEQA)	7
	C. State and Federal Regulations, Policies, and Plans	7
	D. Impaired Water Bodies on CWA 303(d) List	9
	E. Other Plans, Polices and Regulations.....	9
IV.	Rationale For Effluent Limitations and Discharge Specifications.....	9
	A. Discharge Prohibitions	10
	B. Technology-Based Effluent Limitations.....	11
	1. Scope and Authority.....	11
	2. Applicable Technology-Based Effluent Limitations	11
	C. Water Quality-Based Effluent Limitations (WQBELs).....	12
	1. Scope and Authority.....	12
	2. Applicable Beneficial Uses and Water Quality Criteria and Objectives	13
	3. Determining the Need for WQBELs	13
	4. WQBEL Calculations	14
	5. Whole Effluent Toxicity (WET)	17
	6. pH	18
	D. Final Effluent Limitations.....	19
	1. Satisfaction of Anti-Backsliding Requirements.....	19
	2. Satisfaction of Antidegradation Policy.....	19
	3. Stringency of Requirements for Individual Pollutants.....	19
	E. Interim Effluent Limitations – Not Applicable.....	19
	F. Land Discharge Specifications – Not Applicable.....	19
	G. Reclamation Specifications – Not Applicable.....	19
V.	Rationale for Receiving Water Limitations	19
	A. Surface Water	19
	B. Groundwater – Not Applicable	20
VI.	Rationale for Monitoring and Reporting Requirements.....	20
	A. Influent Monitoring – Not Applicable	20
	B. Effluent Monitoring.....	20
	C. Whole Effluent Toxicity Testing Requirements	20
	D. Receiving Water Monitoring.....	20
	1. Surface Water	20
	2. Groundwater – Not Applicable	20
	E. Process Water Supply Monitoring – Not Applicable.....	21

- F. Other Monitoring Requirements – Not Applicable 21
- VII. Rationale for Provisions..... 21
 - A. Standard Provisions..... 21
 - B. Monitoring and Reporting Program (MRP) Requirements 21
 - C. Special Provisions..... 21
 - 1. Reopener Provisions..... 21
 - 2. Special Studies and Additional Monitoring Requirements..... 21
 - 3. Best Management Practices and Pollution Prevention – Not Applicable 22
 - 4. Construction, Operation, and Maintenance Specifications..... 22
 - 5. Special Provisions for Municipal Facilities (POTWs Only) – Not Applicable 22
 - 6. Other Special Provisions..... 22
 - 7. Compliance Schedules – Not Applicable 22
- VIII. Public Participation 22
 - A. Notification of Interested Parties 22
 - B. Written Comments 23
 - C. Public Hearing 23
 - D. Waste Discharge Requirements Petitions..... 23
 - E. Information and Copying..... 23
 - F. Register of Interested Persons 24
 - G. Additional Information 24

List of Tables

- Table F-1. Facility Information 3
- Table F-2. Historic Effluent Limitations and Monitoring Data for Discharge Point 002 6
- Table F-3. Basin Plan Beneficial Uses 7
- Table F-4. Effluent Limitations Guidelines for Discharges of Process Generated Waste
Water Pollutants from Facilities that Recycle Waste Water for Use in Processing 12
- Table F-5. Technology-Based Effluent Limitations Based on BPJ 12
- Table F-6. Summary of WQBELs – Discharge Point 002 18

ATTACHMENT F – FACT SHEET

As described in section II of this Order, this Fact Sheet includes the legal requirements and technical rationale that serve as the basis for the requirements of this Order.

This Order has been prepared under a standardized format to accommodate a broad range of discharge requirements for Dischargers in California. Only those sections or subsections of this Order that are specifically identified as “not applicable” have been determined not to apply to this Discharger. Sections or subsections of this Order not specifically identified as “not applicable” are fully applicable to this Discharger.

I. PERMIT INFORMATION

The following table summarizes administrative information related to the Facility.

Table F-1. Facility Information

WDID	3442009001
Discharger	The CHY Company and Olive Springs Quarry, Inc.
Name of Facility	Olive Springs Quarry
Facility Address	1399 Olive Springs Road Soquel, CA 95073 Santa Cruz County
Facility Contact, Title and Phone	Chris Bone, Manager (831) 475-1610
Authorized Person to Sign and Submit Reports	Chris Bone, Manager (831) 475-1610
Mailing Address	P.O. Box 747 Soquel, CA 95073
Billing Address	P.O. Box 747 Soquel, CA 95073
Type of Facility	NAICS Code 212313 - Crushed and Broken Granite Mining and Quarrying
Major or Minor Facility	Minor
Threat to Water Quality	3
Complexity	A
Pretreatment Program	None
Reclamation Requirements	None
Facility Permitted Flow	None
Facility Design Flow	Design Flow Not Available. Discharge Point 002: No discharges occurred during the previous permit term. The last reported discharge occurred from 2000-2002, where discharges of process wastewater occurred 3 to 4 days per year at approximately 0.03 million gallons per day (MGD).
Watershed	Soquel Creek Watershed
Receiving Water	Soquel Creek
Receiving Water Type	Inland Freshwater

- A.** The CHY Company and Olive Springs Quarry, Inc. (hereinafter Discharger) is the operator of the Olive Springs Quarry (hereinafter Facility), a granite quarry and processing facility. The CHY Company, the forestland division of Setzer Forest Products, Inc., owns the property at 1399 Olive Springs Road on which the Facility is located. Together the CHY Company and Olive Springs Quarry, Inc. are hereinafter referred to as Discharger.

For the purposes of this Order, references to the “discharger” or “permittee” in applicable federal and state laws, regulations, plans, or policy are held to be equivalent to references to the Discharger herein.

- B.** The Facility discharges wastewater to Soquel Creek, a water of the United States, and is currently regulated by Order No. R3-2005-0057, which was adopted on July 8, 2005, and expires on July 8, 2010. The terms and conditions of the current Order have been automatically continued and remain in effect until new Waste Discharge Requirements (WDRs) and National Pollutant Discharge Elimination System (NPDES) permit are adopted pursuant to this Order.
- C.** The Discharger filed a Report of Waste Discharge and submitted an application for renewal of its Waste Discharge Requirements (WDRs) and National Pollutant Discharge Elimination System (NPDES) permit on March 19, 2010. A site visit was conducted on March 9, 2010 to observe operations and collect additional data to develop permit limitations and conditions.

II. FACILITY DESCRIPTION

A. Description of Wastewater and Biosolids Treatment or Controls

Olive Springs Quarry is a granite quarry and processing facility, which consists of three parcels of land leased from the CHY Company, the forestland division of Setzer Forest Products, Inc. Leasehold 1 is on the Facility’s western side and includes the granite quarry and processing areas (rock sorter, rock washer, asphalt batch plant, truckbed wash rack, and associated structures and processes). The Discharger uses no explosives. The Discharger has disturbed no land and conducts no industrial activity on Leasehold 2, which is between Leaseholds 1 and 3. Leasehold 3, comprising approximately 15 acres, is in the Facility’s southwestern portion and includes the office, weigh station, and a large field used for stockpiling fill material.

Wash plant and asphalt plant process wastewater and storm water from the processing area, flow to a settling pond, from which clarified water is recycled. The Discharger uses a polymer to enhance separation and enable recycling of process water. Solids are dredged from the settling pond approximately every other month and are used offsite by providers of “bagged” soil.

Storm water from the quarry area, and a 2 gallons per minute (gpm) groundwater seep from the quarry’s exposed wall, flow to Pond A (with approximately 211,000 cubic feet of capacity), the first of three storm water detention ponds on the Leasehold 1 area. Pond A overflows into Pond B (with approximately 240,000 cubic feet of capacity) through an elevation control pipe; and overflow from Pond B enters Pond C, where it is

recycled to the quarry's processing area. During storm events, Pond B can discharge directly to Soquel Creek at Discharge Point 001. Discharges from Pond B occur through a siphon so discharges continue until the surface elevation of Pond B falls to 10 to 15 feet below the elevation of the outlet pipe.

Pond C, with a design capacity of 110,000 cubic feet, receives overflow/clarified water from Pond B and from the settling pond that serves the quarry's processing area. Water is either recycled from Pond C, or, during significant storm events, it overflows to Soquel Creek through Discharge Point 002. When makeup water is needed for processing, it is pumped from Soquel Creek into Pond C.

The Discharger constructed three ponds in Leasehold 3 to collect and clarify storm water from unpaved areas used to stockpile fill and other unprocessed material. Two ponds discharge (Discharge Points 003 and 004) to a drainage ditch that follows Olive Springs Road and flows to Soquel Creek. The third pond (Discharge Point 005) discharges to a 24-inch culvert that flows directly to Soquel Creek. The ponds have 2 to 3-foot berms constructed of $\frac{3}{4}$ inch washed granite, which retain storm water to allow settling and filtration before discharge. Provisions of Industrial Activities Storm Water General Permit No. 97-03 DWQ (NPDES General Permit CAS000001) regulate storm water discharges from Discharge Points 001, 003, 004, and 005.

The Discharger periodically removes the berms and returns them to the processing area to remove filtered and settled solids. Upgradient to the Leasehold 3 area is a 44-acre residential development, which is surrounded by drainage ditches. During significant storm events, these drainage ditches can overflow onto Leasehold 3. Stockpiles on the Leasehold 3 area are maintained with vegetative cover.

Due to extensive recycling of process water, no discharges occurred from Discharge Point 002 during the term of the current Order. The last known discharges occurred between 2000 and 2002, when discharges of process wastewater occurred 3 to 4 days per year at approximately 0.03 MGD.

On-site storm water collection and control facilities are designed to retain runoff from a 50-year, 2-hour storm event, in accordance with applicable mining regulations of the Santa Cruz County Code at Chapter 16.54.

B. Discharge Points and Receiving Waters

Discharges of combined process wastewater and storm water from Pond C to Soquel Creek occur at Discharge Point 002 (37° 03' 30" N Latitude; 121° 55' 15" W Longitude). Soquel Creek flows through the Big Basin Hydrologic Unit (HU) and ultimately discharges to the Pacific Ocean.

C. Summary of Existing Requirements and Self-Monitoring Report (SMR) Data

Effluent limitations contained in the previous Order for discharges from Discharge Point 002 and representative monitoring data from the term of the previous Order are as follows:

Table F-2. Historic Effluent Limitations and Monitoring Data for Discharge Point 002

Parameter	Units	Effluent Limitation		Monitoring Data (From July 2005 – March 2010)	
		Average Monthly	Maximum Daily	Highest Average Monthly Discharge	Highest Daily Discharge
pH	pH Units	6.0 - 9.0		ND ^[1]	
Total Suspended Solids (TSS)	mg/L	--	50	ND ^[1]	ND ^[1]
Settleable Solids	mL/L	0.3	--	ND ^[1]	ND ^[1]
Aluminum, Total Recoverable	mg/L	1.0	2.0	ND ^[1]	ND ^[1]
Arsenic, Total Recoverable	µg/L	50	100	ND ^[1]	ND ^[1]
Barium, Total Recoverable	mg/L	1.0	2.0	ND ^[1]	ND ^[1]
Cadmium, Total Recoverable	µg/L	0.3	0.7	ND ^[1]	ND ^[1]
Chromium (VI), Total Recoverable	µg/L	8.0	16	ND ^[1]	ND ^[1]
Copper, Total Recoverable	µg/L	7.0	14	ND ^[1]	ND ^[1]
Lead, Total Recoverable	µg/L	2.6	5.3	ND ^[1]	ND ^[1]
Mercury, Total Recoverable	µg/L	0.05	0.1	ND ^[1]	ND ^[1]
Nickel, Total Recoverable	µg/L	42	84	ND ^[1]	ND ^[1]
Selenium, Total Recoverable	mg/L	20	40	ND ^[1]	ND ^[1]
Silver, Total Recoverable	mg/L	2.0	4.0	ND ^[1]	ND ^[1]
Zinc, Total Recoverable	mg/L	3.3	6.5	ND ^[1]	ND ^[1]
Acute Toxicity	% survival	--	100 ^[2]	ND ^[1]	ND ^[1]

^[1] ND – No discharge during the permit term; no effluent data available.

^[2] Survival of test organisms exposed to 100 percent effluent shall not be significantly reduced when compared to the survival of control organisms using a t-test.

D. Compliance Summary

The Facility has not discharged to Soquel Creek during the term of Order No. R3-2005-0057. The Discharger has been in compliance with all other requirements of Order No. R3-2005-0057.

E. Planned Changes – Not Applicable

III. APPLICABLE PLANS, POLICIES, AND REGULATIONS

The requirements contained in the proposed Order are based on the requirements and authorities described in this section.

A. Legal Authorities

This Order is issued pursuant to section 402 of the federal Clean Water Act (CWA) and implementing regulations adopted by the U.S. Environmental Protection Agency (USEPA) and chapter 5.5, division 7 of the California Water Code (commencing with section 13370). It shall serve as a NPDES permit for point source discharges from this Facility to surface waters. This Order also serves as WDRs pursuant to article 4, chapter 4, division 7 of the Water Code (commencing with section 13260).

B. California Environmental Quality Act (CEQA)

Under Water Code section 13389, this action to adopt an NPDES permit is exempt from the provisions of CEQA, Public Resources Code sections 21100 through 21177.

C. State and Federal Regulations, Policies, and Plans

1. Water Quality Control Plans. The Regional Water Board has adopted a Water Quality Control Plan for the Central Coast Region (the Basin Plan) that designates beneficial uses, establishes water quality objectives, and contains implementation programs and policies to achieve those objectives for receiving waters within the Region. In addition, the Basin Plan implements State Water Resources Control Board (State Water Board) Resolution No. 88-63, which established State policy that all waters, with certain exceptions, should be considered suitable or potentially suitable for municipal or domestic supply. Thus, beneficial uses applicable to Soquel Creek are presented below.

Table F-3. Basin Plan Beneficial Uses

Discharge Point	Receiving Water	Beneficial Use(s)
002	Soquel Creek	MUN - Municipal and domestic supply AGR - Agricultural supply IND- Industrial service supply GWR - Groundwater recharge REC-1 - Water contact recreation REC-2 - Non-contact water recreation WILD - Wildlife habitat COLD - Cold fresh water habitat MIGR - Migration of aquatic organisms SPWN - Spawning, reproduction, and/or early development BIOL- Preservation of Biological Habitats of Special Significance FRSH - Freshwater replenishment COMM - Commercial and sport fishing

To protect beneficial uses, the Basin Plan establishes water quality objectives and implementation programs. This Order's requirements implement the Basin Plan.

- 2. Thermal Plan.** The State Water Resources Control Board (State Board) adopted a *Water Quality Control Plan for Control of Temperature in the Coastal and Interstate Water and Enclosed Bays and Estuaries of California* (Thermal Plan) on May 18, 1972, and amended this plan on September 18, 1975. The Thermal Plan contains temperature objectives for inland surface waters, which are applicable to the Discharger. The general objective for temperature from Section II.A.2.a. of the Basin Plan is more limiting, however, and is included as a receiving water limitation in the Order.
- 3. National Toxics Rule (NTR) and California Toxics Rule (CTR).** USEPA adopted the NTR on December 22, 1992, and later amended it on May 4, 1995 and November 9, 1999. About forty criteria in the NTR applied in California. On May 18, 2000, USEPA adopted the CTR. The CTR promulgated new toxics criteria for California and, in addition, incorporated the previously adopted NTR criteria that were applicable in the State. The CTR was amended on February 13, 2001. These rules contain water quality criteria for priority pollutants that are applicable to the receiving water for discharges from the Facility.
- 4. State Implementation Policy.** On March 2, 2000, the State Water Board adopted the *Policy for Implementation of Toxics Standards for Inland Surface Waters, Enclosed Bays, and Estuaries of California* (State Implementation Policy or SIP). The SIP became effective on April 28, 2000 with respect to the priority pollutant criteria promulgated for California by the USEPA through the NTR and to the priority pollutant objectives established by the Regional Water Board in the Basin Plan. The SIP became effective on May 18, 2000 with respect to the priority pollutant criteria promulgated by the USEPA through the CTR. The State Water Board adopted amendments to the SIP on February 24, 2005 that became effective on July 13, 2005. The SIP establishes implementation provisions for priority pollutant criteria and objectives and provisions for chronic toxicity control. Requirements of this Order implement the SIP.
- 5. Alaska Rule.** On March 30, 2000, USEPA revised its regulation that specifies when new and revised state and tribal water quality standards (WQS) become effective for CWA purposes (40 CFR 131.21, 65 Fed. Reg. 24641 (April 27, 2000)). Under the revised regulation (also known as the Alaska rule), new and revised standards submitted to USEPA after May 30, 2000, must be approved by USEPA before being used for CWA purposes. The final rule also provides that standards already in effect and submitted to USEPA by May 30, 2000, may be used for CWA purposes, whether or not approved by USEPA.
- 6. Antidegradation Policy.** Section 131.12 requires that the state water quality standards include an antidegradation policy consistent with the federal policy. The State Water Board established California's antidegradation policy in State Water Board Resolution No. 68-16. Resolution No. 68-16 incorporates the federal antidegradation policy where the federal policy applies under federal law.

Resolution No. 68-16 requires that existing water quality be maintained unless degradation is justified based on specific findings. The Regional Water Board's Basin Plan implements, and incorporates by reference, both the State and federal antidegradation policies. The permitted discharge must be consistent with the antidegradation provision of section 131.12 and State Water Board Resolution No. 68-16.

- 7. Anti-Backsliding Requirements.** Sections 402(o)(2) and 303(d)(4) of the CWA and federal regulations at title 40, Code of Federal Regulations section 122.44(l) prohibit backsliding in NPDES permits. These anti-backsliding provisions require that effluent limitations in a reissued permit must be as stringent as those in the previous permit, with some exceptions in which limitations may be relaxed.
- 8. Monitoring and Reporting Requirements.** Title 40, Code of Federal Regulations section 122.48 requires all NPDES permits to specify requirements for recording and reporting monitoring results. CWC sections 13267 and 13383 authorize the regional boards to require technical and monitoring reports. The Monitoring and Reporting Program (Attachment E of this Order) establishes monitoring and reporting requirements to implement federal and State requirements.

D. Impaired Water Bodies on CWA 303(d) List

CWA section 303(d) requires states to identify specific water bodies where water quality standards are not expected to be met after implementation of technology-based effluent limitations on point sources. For all 303(d) listed water bodies and pollutants, the Regional Water Board must develop and implement total maximum daily loads (TMDLs) that will specify waste load allocations (WLAs) for point sources and load allocations for non-point sources.

The State's 2006 303 (d) list of impaired water bodies, which was approved by USEPA in June 2007, does not identify Soquel Creek as being impaired.

E. Other Plans, Policies and Regulations

- 1. Discharges of Storm Water.** For the control of storm water discharged from the quarry site through Discharge Points 001, 003, 004, and 005, the Order requires the Discharger to seek authorization to discharge under and meet the requirements of the State Water Resources Control Board's Water Quality Order 97-03-DWQ, NPDES General Permit No. CAS000001, *Waste Discharge Requirements for Discharges of Storm Water Associated with Industrial Activities Excluding Construction Activities*.

IV. RATIONALE FOR EFFLUENT LIMITATIONS AND DISCHARGE SPECIFICATIONS

The CWA requires point source dischargers to control the amount of conventional, non-conventional, and toxic pollutants that are discharged into the waters of the United States. The control of pollutants discharged is established through effluent limitations and other requirements in NPDES permits. There are two principal bases for effluent limitations in the Code of Federal Regulations: section 122.44(a) requires that permits include applicable

technology-based limitations and standards; and section 122.44(d) requires that permits include water quality-based effluent limitations to attain and maintain applicable numeric and narrative water quality criteria to protect the beneficial uses of the receiving water.

A. Discharge Prohibitions

- 1. Discharge Prohibition III.A** (No discharge to locations except as described in the Order). The Order authorizes a single, specific point of discharge to Soquel Creek; and this prohibition reflects CWA section 402's prohibition against discharges of pollutants except in compliance with the Act's permit requirements, effluent limitations, and other enumerated provisions. This prohibition is also retained from the previous Order.
- 2 Discharge Prohibition III.B** (No discharge of wastewaters, except as described in the Order). Because limitations and conditions of the Order have been prepared based on specific information provided by the Discharger and specific wastes described by the Discharger, the limitations and conditions of the Order do not adequately address waste streams not contemplated during drafting of the Order. To prevent the discharge of such waste streams that may be inadequately regulated, the Order prohibits the discharge of any waste that was not described to the Regional Water Board during the process of permit reissuance.
- 3. Discharge Prohibition III.C** (Overflows and bypasses prohibited). The discharge of untreated or partially treated wastewater from the Discharger's collection, treatment, or disposal facilities represents an unauthorized bypass pursuant to 40 CFR 122.41 (m) or an unauthorized discharge, which poses a threat to human health and/or aquatic life, and therefore, is explicitly prohibited by the Order.
- 4. Discharge Prohibition III.D** (No adverse impacts to beneficial uses or threatened or endangered species). This prohibition is retained from the previous Order and is based on the Basin Plan, which, in accordance with CWC Section 13241, must include water quality objectives to ensure the reasonable protection of beneficial uses and the prevention of nuisance.
- 5. Discharge Prohibition III.E** (Creation of a condition of pollution, contamination, or nuisance, as defined by Section 13050 of the CWC, is prohibited). This prohibition is retained from the previous Order.
- 6. Discharge Prohibition III.F** (Discharge of fuels, greases or oils is prohibited). This prohibition is retained from the previous Order.
- 7. Discharge Prohibition III.G** (Discharge of radioactive substances is prohibited). This prohibition is retained from the previous Order.

B. Technology-Based Effluent Limitations

1. Scope and Authority

Section 301(b) of the CWA and implementing USEPA permit regulations at section 122.44, title 40 of the Code of Federal Regulations, require that permits include conditions meeting applicable technology-based requirements at a minimum, and any more stringent effluent limitations necessary to meet applicable water quality standards. The discharge authorized by this Order must meet minimum federal technology-based requirements based on Effluent Limitations Guidelines and Standards for the Mineral Mining and Processing Category in 40 CFR Part 436 and Best Professional Judgment (BPJ) in accordance with 40 CFR Part 125, section 125.3

The CWA requires that technology-based effluent limitations be established based on several levels of controls:

- a. Best practicable treatment control technology (BPT) is based on the average of the best performance by plants within an industrial category or subcategory. BPT standards apply to toxic, conventional, and nonconventional pollutants.
- b. Best available technology economically achievable (BAT) represents the best existing performance of treatment technologies that are economically achievable within an industrial point source category. BAT standards apply to toxic and nonconventional pollutants.
- c. Best conventional pollutant control technology (BCT) is a standard for the control of conventional pollutants, including BOD, TSS, fecal coliform, pH, and oil and grease, from existing industrial point sources. The BCT standard is established after considering the “cost reasonableness” of the relationship between the cost of attaining a reduction in effluent discharge and the benefits that would result, and also the cost effectiveness of additional treatment beyond BPT.
- d. New source performance standards (NSPS) reflect the best available demonstrated control technology; i.e., they require state-of-the-art treatment technology for new sources.

The CWA requires USEPA to develop effluent limitations, guidelines and standards (ELGs) representing application of BPT, BAT, BCT, and NSPS. Section 402(a)(1) of the CWA and section 125.3 of the Code of Federal Regulations authorize the use of BPJ to derive technology-based effluent limitations on a case-by-case basis where ELGs are not available for certain industrial categories and/or pollutants of concern. Where BPJ is used, the permit writer must consider specific factors outlined in section 125.3.

2. Applicable Technology-Based Effluent Limitations

Effluent limitations, guidelines and standards for discharges from this Facility are covered under the Mineral Mining and Processing Point Source Category, Subpart B

- Crushed Stone Subcategory (40 CFR 436.22). The following effluent limitations, representing the degree of effluent reduction attainable by the application of BPT, for discharges from the Facility shall not exceed the following limitations at Discharge Point 002:

Table F-4. Effluent Limitations Guidelines for Discharges of Process Generated Waste Water Pollutants from Facilities that Recycle Waste Water for Use in Processing

Effluent Characteristic	Effluent Limitations	
	Maximum for any 1 day	Average of daily values for 30 consecutive days shall not exceed—
pH	[1]	[1]

[1] Within the range 6.0 to 9.0.

In addition, technology-based effluent limitations contained in this Order and previous orders have been established for other pollutants of concern using BPJ at Discharge Point 002. The following technology-based limitations for settleable solids and total suspended solids (TSS) are retained from Order No. R3-2005-0057.

Table F-5. Technology-Based Effluent Limitations Based on BPJ

Parameter	Units	Effluent Limitations	
		Maximum Daily	Average Monthly
Settleable Solids	ml/L	--	0.3
TSS	mg/L	50	--

C. Water Quality-Based Effluent Limitations (WQBELs)

1. Scope and Authority

NPDES regulations at 40 CFR 122.44(d) require that permits include limitations more stringent than applicable federal technology-based requirements where necessary to achieve applicable water quality standards, including numeric and narrative objectives within a standard.

The process for determining “reasonable potential” and calculating WQBELs, when necessary, is intended to protect the designated uses of receiving waters as specified in the Basin Plan, and achieve applicable water quality objectives and criteria that are contained in the Basin Plan and in other applicable State and federal rules, plans, and policies, including applicable water quality criteria from the CTR and the NTR.

Where reasonable potential has been established for a pollutant, but there is no numeric criterion or objective for the pollutant, WQBELs must be established in accordance with the requirements of 40 CFR 122.44(d)(1)(vi), using (1) USEPA

criteria guidance under CWA section 304(a), supplemented where necessary by other relevant information; (2) an indicator parameter for the pollutant of concern; or (3) a calculated numeric water quality criterion, such as a proposed State criterion or policy interpreting the State's narrative criterion, supplemented with other relevant information.

2. Applicable Beneficial Uses and Water Quality Criteria and Objectives

Beneficial uses described by the Basin Plan for Soquel Creek are presented in section II.H of the Order. Water quality criteria applicable to this receiving water are established by the CTR, the NTR, and by the Basin Plan and include the following:

- Water quality criteria for the protection of aquatic life and human health for 126 priority, toxic pollutants established by the NTR and the CTR and described at 40 CFR 131.38.
- General objectives for all inland surface waters, established by Section II.A.2 of the Basin Plan.
- Specific objectives for inland surface waters established by Section II.A.2 of the Basin Plan for the protection of municipal and domestic supplies. These criteria include the primary maximum contaminant levels for inorganic and organic chemicals presented in Tables 64431-A and 64444-A, respectively, of the California Code of Regulations Title 22, Division 4, Chapter 15.
- Specific objectives for inland surface waters established in Section II.A.2 of the Basin Plan for the protection of agricultural water supplies, including those presented in Tables 3-3 and 3-4 of the Basin Plan.
- Specific objectives for inland surface waters established by Section II.A.2 of the Basin Plan for the protection of water contact and non-water contact water recreation.
- Specific objectives for inland surface waters established by Section II.A.2 of the Basin Plan for the protection of cold freshwater habitat and fish migration and spawning, including those presented in Table 3-5 of the Basin Plan.

3. Determining the Need for WQBELs

NPDES regulations at 40 CFR 122.44(d) require effluent limitations to control all pollutants which are or may be discharged at a level which will cause, have the reasonable potential to cause, or contribute to an excursion above any State water quality standard.

The SIP, statewide policy that became effective on May 22, 2000, establishes procedures to implement water quality criteria from the NTR and CTR and for priority, toxic pollutant objectives established in the Basin Plan. The implementation procedures of the SIP include methods to determine reasonable potential (for pollutants to cause or contribute to excursions above State water quality standards)

and to establish numeric effluent limitations, if necessary, for those pollutants which show reasonable potential.

The SIP Section 1.3 requires the Regional Board to use all available valid, relevant, and representative receiving water and effluent data and information to conduct a reasonable potential analysis (RPA). Effluent data for the discharge at Discharge Point 002 was not available because there were no discharges at Discharge Point 002 during the previous permit term. Discharge Points 001, 003, 004 and 005 only discharge storm water and are regulated under the State Water Resources Control Board’s Water Quality Order 97-03-DWQ, NPDES General Permit No. CAS000001, *Waste Discharge Requirements for Discharges of Storm Water Associated with Industrial Activities Excluding Construction Activities*. Therefore, an RPA was not conducted for any of the discharge points to Soquel Creek.

4. WQBEL Calculations

Effluent data for the discharge at Discharge Point 002 was not available because there were no discharges at Discharge Point 002 during the previous permit term. Therefore, no WQBEL calculations were performed and effluent limitations were retained from Order R3-2005-0057, and new effluent limitations taken directly from the California Toxics Rule for toxic pollutants were added. The limitations are conservative because no mixing zone is provided and sampling must occur only when the ponds discharge, likely during periods of high rainfall when substantial dilution will occur.

Table F-6. Summary of Effluent Limitations for Toxic Pollutants – Discharge Point 002

Constituent	Units	Effluent Limits	
		Average Monthly	Maximum Daily
pH	s.u.	7.0 - 8.3 at all times	
Total Suspended Solids (TSS)	mg/L	50	--
Turbidity	NTUs	--	50
Acute Toxicity	TU	--	1 ^{[1][2]}
Mercury, Total Recoverable	µg/L	0.050	0.10
Selenium, Total Recoverable	µg/L	10	20
Cyanide, Total (as CN)	µg/L	4.3	8.5
Antimony, Total Recoverable	µg/L	6.0	12
Arsenic, Total Recoverable	µg/L	50	100
Beryllium, Total Recoverable	µg/L	4.0	8.0
Cadmium, Total Recoverable	µg/L	5.0	10
Chromium (III)	µg/L	468	940
Chromium (VI)	µg/L	8.1	16
Copper, Total Recoverable	µg/L	22	44
Lead, Total Recoverable	µg/L	13	25
Nickel, Total Recoverable	µg/L	100	201
Silver, Total Recoverable	µg/L	17	34
Thallium, Total Recoverable	µg/L	1.7	3.4
Zinc, Total Recoverable	µg/L	164	329

Constituent	Units	Effluent Limits	
		Average Monthly	Maximum Daily
Asbestos	Fibers/L	7,000,000	14,000,000
2,3,7,8 TCDD	µg/L	0.00000013	0.00000026
Acrolein	µg/L	320	642
Acrylonitrile	µg/L	0.059	0.12
Benzene	µg/L	1.0	2.0
Bromoform	µg/L	4.3	8.6
Carbon Tetrachloride	µg/L	0.25	0.50
Chlorobenzene	µg/L	30	60
Chlorodibromomethane	µg/L	0.40	0.80
Chloroform	µg/L	80	160
Dichlorobromomethane	µg/L	0.56	1.12
1,1-Dichloroethane	µg/L	5.0	10
1,2-Dichloroethane	µg/L	0.38	0.76
1,1-Dichloroethylene	µg/L	0.057	0.11
1,2-Dichloropropane	µg/L	0.52	1.0
1,3-Dichloropropylene	µg/L	0.50	1.0
Ethylbenzene	µg/L	300	602
Methyl Bromide	µg/L	48	96
Methylene Chloride	µg/L	4.7	9.4
1,1,2,2-Tetrachloroethane	µg/L	0.17	0.34
Tetrachloroethylene	µg/L	0.80	1.6
Toluene	µg/L	150	301
1,2-Trans-Dichloroethylene	µg/L	10	20
1,1,1-Trichloroethane	µg/L	200	401
1,1,2-Trichloroethane	µg/L	0.60	1.2
Trichloroethylene	µg/L	2.7	5.4
Vinyl Chloride	µg/L	0.50	1.0
2-Chlorophenol	µg/L	120	241
2,4-Dichlorophenol	µg/L	93	187
2,4-Dimethylphenol	µg/L	540	1,083
2-methyl-4,6-dinitrophenol	µg/L	13	27
2,4-Dinitrophenol	µg/L	70	140
Pentachlorophenol	µg/L	0.28	0.56
Phenol	µg/L	21,000	42,130
2,4,6-Trichlorophenol	µg/L	2.1	4.2
Acenaphthene	µg/L	1,200	2,407
Anthracene	µg/L	9,600	19,259
Benzidine	µg/L	0.00012	0.00024
Benzo(a)Anthracene	µg/L	0.0044	0.0088
Benzo(a)Pyrene	µg/L	0.0044	0.0088
Benzo(b)Fluoranthene	µg/L	0.0044	0.0088
Benzo(k)Fluoranthene	µg/L	0.0044	0.0088
Bis(2-Chloroethyl)Ether	µg/L	0.031	0.062
Bis(2-Chloroisopropyl)Ether	µg/L	1,400	2,809
Bis(2-Ethylhexyl)Phthalate	µg/L	1.8	3.6
Butylbenzyl Phthalate	µg/L	3,000	6,019

Constituent	Units	Effluent Limits	
		Average Monthly	Maximum Daily
2-Chloronaphthalene	µg/L	1,700	3,411
Chrysene	µg/L	0.0044	0.0088
Dibenzo(a,h)Anthracene	µg/L	0.0044	0.0088
1,2-Dichlorobenzene	µg/L	600	1,204
1,3-Dichlorobenzene	µg/L	400	802
1,4-Dichlorobenzene	µg/L	5.0	10
3,3 Dichlorobenzidine	µg/L	0.040	0.1
Diethyl Phthalate	µg/L	23,000	46,142
Dimethyl Phthalate	µg/L	313,000	627,937
Di-n-Butyl Phthalate	µg/L	2,700	5,417
2,4-Dinitrotoluene	µg/L	0.11	0.22
1,2-Diphenylhydrazine	µg/L	0.040	0.080
Fluoranthene	µg/L	300	602
Fluorene	µg/L	1,300	2,608
Hexachlorobenzene	µg/L	0.00075	0.0015
Hexachlorobutadiene	µg/L	0.44	0.88
Hexachlorocyclopentadiene	µg/L	50	100
Hexachloroethane	µg/L	1.9	3.8
Indeno(1,2,3-cd)Pyrene	µg/L	0.0044	0.0088
Isophorone	µg/L	8.4	17
Nitrobenzene	µg/L	17	34
N-Nitrosodimethylamine	µg/L	0.00069	0.0014
N-Nitrosodi-n-Propylamine	µg/L	0.0050	0.010
N-Nitrosodiphenylamine	µg/L	5.0	10
Pyrene	µg/L	960	1,926
1,2,4-Trichlorobenzene	µg/L	5.0	10
Aldrin	µg/L	0.00013	0.00026
alpha-BHC	µg/L	0.0039	0.0078
beta-BHC	µg/L	0.014	0.028
gamma-BHC	µg/L	0.019	0.038
Chlordane	µg/L	0.00057	0.0011
4,4'-DDT	µg/L	0.00059	0.0012
4,4'-DDE	µg/L	0.00059	0.0012
4,4'-DDD	µg/L	0.00083	0.0017
Dieldrin	µg/L	0.00014	0.00028
alpha-Endosulfan	µg/L	0.046	0.092
beta-Endosulfan	µg/L	0.046	0.092
Endosulfan Sulfate	µg/L	110	221
Endrin	µg/L	0.029	0.059
Endrin Aldehyde	µg/L	0.76	1.5
Heptachlor	µg/L	0.00021	0.00042
Heptachlor Epoxide	µg/L	0.00010	0.00020
PCBs sum	µg/L	0.00017	0.00034
Toxaphene	µg/L	0.00016	0.00033
Suspended Sediments	mg/L	[3]	[3]

5. Whole Effluent Toxicity (WET)

Whole effluent toxicity (WET) limitations protect receiving water quality from the aggregate toxic effect of a mixture of pollutants in the effluent. WET tests measure the degree of response of exposed aquatic test organisms to an effluent. The WET approach allows for protection of the narrative “no toxics in toxic amounts” criterion while implementing numeric criteria for toxicity. There are two types of WET tests - acute and chronic. An acute toxicity test is conducted over a short time period and measures mortality. A chronic toxicity test is conducted over a longer period of time and may measure mortality, reproduction, and growth.

The Basin Plan specifies a narrative objective for toxicity, requiring that all waters be maintained free of toxic substances in concentrations that are toxic to, or which produce detrimental physiological responses in human, plant, animal, or aquatic life. Survival of aquatic organisms in surface waters subjected to a waste discharge or other controllable water quality conditions shall not be less than that for the same water body in areas unaffected by the waste discharge or for another control water.

Section 4.0 of the Basin Plan requires a chronic toxicity limitation for all discharges that will cause, have the reasonable potential to cause, or contribute to chronic toxicity in receiving waters because discharges from the Facility occur infrequently and only for short durations, Order No. R3-2005-0057 only included an acute limitation. A chronic limitation is not meaningful (i.e., the discharge will not cause, have the reasonable potential to cause, or contribute to chronic toxicity in the receiving waters) and is not practical in such circumstances. Section 8.3.2 of the chronic WET methods manual (*Short-Term Methods for Estimating the Chronic Toxicity of Effluents and Receiving Waters to Freshwater Organisms*, Fourth Edition, October 2002, EPA-821-R-02-013) states that when “tests are conducted off-site, a minimum of three samples are collected. If these samples are collected on Test Days 1, 3, and 5, the first sample would be used for test initiation and for test solution renewal on Day 2. The second sample would be used for test solution renewal on Days 3 and 4. The third sample would be used for test solution renewal on Days 5, 6, and 7.” Here, because the Discharger is expected to discharge for periods of only a few days, the chronic WET test methods are generally inappropriate, and potential chronic effects are diminished due to the short expected duration of any discharges. The Discharger’s continuing efforts to re-use process water to the extent possible at the Facility have resulted in discharges that occur less frequently and for shorter durations – discharges too infrequent and too short to cause, have the potential to cause, or contribute to chronic toxicity in the receiving water. Therefore, consistent with Order No. R3-2005-0057, this Order does not contain chronic toxicity effluent limitations or monitoring requirements.

Consistent with Order No. R3-2005-0057, this Order includes an acute toxicity limitation that requires survival of test organisms exposed to 100 percent effluent to not be significantly reduced, as determined by a t-test, when compared to the survival of control organisms. Order No. R3-2005-0057 has effluent limitations for acute toxicity measured in percent survival. In order to stay consistent with recently

adopted Orders by Regional Water Board, effluent limitations for acute toxicity have been changed and will be regulated in acute toxic units (TU_a) in this Order.

The Discharger must maintain a Toxicity Reduction Evaluation (TRE) Workplan, which describes the steps that the Discharger intends to follow in the event that acute toxicity is detected in the discharge to Soquel Creek. When monitoring measures acute toxicity in the effluent above the limitation established by the Order, the Discharger must resample, if the discharge is continuing, and retest for acute toxicity. The Executive Officer will then determine whether to initiate enforcement action, whether to require the Discharger to implement a TRE, or to implement other measures.

6. pH

The Basin Plan requires that the pH shall not be depressed below 7.0 to protect the cold freshwater habitat beneficial use or raised above 8.3 to protect the municipal and domestic supply, agricultural supply, water contact recreation, and non-contact water recreation beneficial uses. Order No. R3-2005-0057 required a less stringent maximum pH limitation of 9.0 and a less stringent minimum pH of 6.0. Therefore, effluent limitations for pH are established in this Order for discharges at Discharge Point 002 consistent with the Basin Plan, which are protective of the receiving water beneficial uses.

A summary of all WQBELs applicable at Discharge Point 002 are presented in the table below. Since there have been no discharges during the term of the previous Order, all WQBELs, with the exception of pH, have been retained from Order No. R3-2005-0057.

Table F-7. Summary of WQBELs – Discharge Point 002

Constituent	Units	Effluent Limits	
		Average Monthly	Maximum Daily
pH	s.u.	7.0 - 8.3 at all times	
Aluminum, Total Recoverable	mg/L	1.0	2.0
Barium, Total Recoverable	mg/L	1.0	2.0
Arsenic, Total Recoverable	µg/L	50	100
Cadmium, Total Recoverable	µg/L	0.3	0.7
Chromium (VI), Total Recoverable	µg/L	8.0	16
Copper, Total Recoverable	µg/L	7.0	14
Lead, Total Recoverable	µg/L	2.6	5.3
Mercury, Total Recoverable	µg/L	0.05	0.1
Nickel, Total Recoverable	µg/L	42	84
Selenium, Total Recoverable	µg/L	20	40
Silver, Total Recoverable	µg/L	2.0	4.1
Zinc, Total Recoverable	µg/L	3.3	6.5
Acute Toxicity	TU _a ^[2]	--	1 ^[1]

^[1] Survival of test organisms exposed to 100 percent effluent shall not be significantly reduced when compared of control organisms using a t-test.

^[2] Order No. R3-2005-0057 measured acute toxicity in percent removal. In order to stay consistent with other Orders recently adopted by the Regional Water Board, this Order regulates acute toxicity in toxic units (TU_a).

D. Final Effluent Limitations

Final, technology-based and water quality-based effluent limitations established by the Order are discussed in the preceding sections of the Fact Sheet.

1. Satisfaction of Anti-Backsliding Requirements

The Order satisfies applicable anti-backsliding provisions of the Clean Water Act, as all limitations and requirements of the Order are at least as stringent as those of the previous Order. The Order retains effluent limitations established by the previous permit for pH, TSS, settleable solids, aluminum, arsenic, barium, cadmium, chromium (VI), copper, lead, mercury, nickel, selenium, silver, zinc, and acute toxicity.

2. Satisfaction of Antidegradation Policy

Provisions of the Order are consistent with applicable antidegradation policies expressed by NPDES regulations at 40 CFR 131.12 and by State Water Board Resolution No. 68-16. Limitations and conditions of the Order assure maintenance of the existing quality of receiving waters and do not authorize increased rates of discharge or increased pollutant loadings to the receiving water above that authorized by the previous Order.

3. Stringency of Requirements for Individual Pollutants

This Order contains both technology-based and water quality-based effluent limitations for individual pollutants. The technology-based effluent limitations consist of restrictions on pH, TSS, and settleable solids. Restrictions on these pollutants are discussed in section IV.B of the Fact Sheet. This Order's technology-based pollutant restrictions implement the minimum, applicable federal technology-based requirements. In addition, this Order contains effluent limitations more stringent than the minimum, federal technology-based requirements that are necessary to meet water quality standards. These limitations are not more stringent than required by the CWA.

Final, technology and water quality-based effluent limitations are summarized in sections IV.B and C of this Fact Sheet.

E. Interim Effluent Limitations – Not Applicable

F. Land Discharge Specifications – Not Applicable

G. Reclamation Specifications – Not Applicable

V. RATIONALE FOR RECEIVING WATER LIMITATIONS

A. Surface Water

Receiving water quality is a result of many factors, some unrelated to the discharge. This Order considers these factors and is designed to minimize the influence of the discharge on Soquel Creek. Specific water quality objectives established by the Basin

Plan to meet this goal for all inland surface waters are included as Receiving Water Limitations in Section V.A of this Order.

B. Groundwater – Not Applicable

VI. RATIONALE FOR MONITORING AND REPORTING REQUIREMENTS

NPDES regulations at 40 CFR 122.48 require that all NPDES permits specify requirements for recording and reporting monitoring results. Water Code sections 13267 and 13383 also authorize the Regional Water Board to require technical and monitoring reports. Rationale for the monitoring and reporting requirements contained in the Monitoring and Reporting Program (MRP), which is presented as Attachment E of this Order, is presented below.

A. Influent Monitoring – Not Applicable

B. Effluent Monitoring

Effluent monitoring requirements of the previous permit for Discharge Point 002 (at Monitoring Location EFF-002) are retained in this Order with the following exceptions/changes:.

1. Order No. R3-2005-0057 has effluent limitations for acute toxicity measured in percent survival. Consistent with recently adopted Orders by the Regional Water Board, effluent limitations for acute toxicity have been changed and will be regulated in acute toxic units (TU_a) in this Order.

C. Whole Effluent Toxicity Testing Requirements

Whole effluent toxicity (WET) limitations protect receiving water quality from the aggregate toxic effect of a mixture of pollutants in the effluent. Acute toxicity testing measures mortality in 100 percent effluent over a short test period and chronic toxicity testing is conducted over a longer period of time and may measure mortality, reproduction, and/or growth. This Order retains limitations and monitoring requirements for acute toxicity for Discharge Point 002 from the previous Order. Since discharges from this Facility occur infrequently and for short duration, only acute WET limitations and monitoring requirements are set forth in this Order.

D. Receiving Water Monitoring

1. Surface Water

The receiving water monitoring requirements are unchanged and are retained from Order No. R3-2005-0057.

2. Groundwater – Not Applicable

E. Process Water Supply Monitoring – Not Applicable

F. Other Monitoring Requirements – Not Applicable

VII. RATIONALE FOR PROVISIONS

A. Standard Provisions

Standard Provisions, which apply to all NPDES permits in accordance with 40 CFR 122.41, and additional conditions applicable to specified categories of permits in accordance with 40 CFR 122.42, are provided in Attachment D to the Order.

NPDES regulations at 40 CFR 122.41 (a)(1) and (b - n) establish conditions that apply to all state-issued NPDES permits. These conditions must be incorporated into the permits either expressly or by reference. If incorporated by reference, a specific citation to the regulations must be included in the Order. 40 CFR 123.25 (a)(12) allows the State to omit or modify conditions to impose more stringent requirements. In accordance with 40 CFR 123.25, this Order omits federal conditions that address enforcement authority specified in 40 CFR 122.41 (j)(5) and (k)(2), because the enforcement authority under the Water Code is more stringent. In lieu of these conditions, this Order incorporates by reference Water Code section 13387 (e).

B. Monitoring and Reporting Program (MRP) Requirements

The Discharger shall comply with the MRP, and future revisions thereto, in Attachment E of this Order.

C. Special Provisions

1. Reopener Provisions

The Order may be modified in accordance with the requirements set forth at 40 CFR 122 and 124, to include appropriate conditions or limits based on newly available information, or to implement any, new State water quality objectives that are approved by the USEPA. As effluent is further characterized through additional monitoring, and if a need for additional effluent limitations becomes apparent after additional effluent characterization, the Order will be reopened to incorporate such limitations. This provision is particularly important to this Order because of the lack of available CTR and Title 22 priority pollutant data at the writing of this Order. When this data becomes available, this Order will be reopened to include WQBELs as appropriate from the RPA.

2. Special Studies and Additional Monitoring Requirements

a. Toxicity Reduction Requirements

The requirement to maintain a Toxicity Reduction Work Plan is retained from Order No. R3-2005-0057. When toxicity monitoring measures acute toxicity in the effluent above the limitation established by the Order, the Discharger is

required to resample and retest, if the discharge is continuing. When all monitoring results are available, the Executive Officer can determine whether to initiate enforcement action, whether to require the Discharger to implement toxicity reduction evaluation (TRE) requirements, or whether other measures are warranted.

3. Best Management Practices and Pollution Prevention – Not Applicable

4. Construction, Operation, and Maintenance Specifications

a. Erosion and Sediment Control

The requirement to inspect, install, and have in proper operational condition all erosion and sediment control systems necessary to assure compliance with this Order is retained from Order No. R3-2005-0057.

5. Special Provisions for Municipal Facilities (POTWs Only) – Not Applicable

6. Other Special Provisions

a. Discharges of Storm Water

Order No. R3-2010-0039 applies to discharges of process wastewater and storm water from Discharge Point 002. All other storm water runoff from the Olive Springs Quarry can be discharged only in accordance with the requirements of General Permit No. CAS000001 - *Waste Discharge Requirements for Discharges of Storm Water Associated with Industrial Activities*.

b. Timber Harvesting Plan

Order No. R3-2005-0057 required that the Discharger collect, treat, and monitor all runoff from the timber harvesting site harvested in accordance with the Timber Harvesting Plan (No. 1-04-138 SCR) approved by the Director of Forestry on February 16, 2005. This provision has been retained in this Order to ensure compliance with the harvesting plan.

7. Compliance Schedules – Not Applicable

VIII. PUBLIC PARTICIPATION

The Central Coast Regional Water Quality Control Board is considering the issuance of waste discharge requirements (WDRs) that will serve as a National Pollutant Discharge Elimination System (NPDES) permit for the Olive Springs Quarry. As a step in the WDR adoption process, the Regional Water Board staff has developed tentative WDRs. The Regional Water Board encourages public participation in the WDR adoption process.

A. Notification of Interested Parties

The Regional Water Board has notified the Discharger and interested agencies and persons of its intent to prescribe waste discharge requirements for the discharge and has

provided them with an opportunity to submit their written comments and recommendations. The Discharger provided notification in a local newspaper or in a daily newspaper of general circulation **by September 13, 2010**. Additionally, the draft waste discharge requirements were mailed to interested parties on **August 30, 2010**. Notification was provided through posting in the Santa Cruz Sentinel.

B. Written Comments

Regional Water Board staff determinations are tentative. Interested persons are invited to submit written comments concerning these tentative WDRs. Comments must be submitted either in person or by mail to the Executive Office at the Regional Water Board at the address above on the cover page of this Order.

To receive a full response from the Regional Water Board staff and to be considered by the Regional Water Board, written comments should be received at the Regional Water Board offices by 5:00 p.m. on **October 14, 2010**.

No comments were received by October 14, 2010.

C. Public Hearing

The Regional Water Board will hold a public hearing on the tentative WDRs during its regular Board meeting on the following date and time and at the following location:

Date: **December 9, 2010**
Time: **8:30 a.m.**
Location: **Watsonville City Council Chambers**

Interested persons were invited to attend. At the public hearing, the Regional Water Board will hear testimony, if any, pertinent to the discharge, WDRs, and permit.

D. Waste Discharge Requirements Petitions

Any aggrieved person may petition the State Water Resources Control Board to review the decision of the Regional Water Board regarding the final WDRs. The petition must be submitted within 30 days of the Regional Water Board's action to the following address:

State Water Resources Control Board
Office of Chief Counsel
P.O. Box 100, 1001 I Street
Sacramento, CA 95812-0100

E. Information and Copying

The Report of Waste Discharge, related documents, tentative effluent limitations and special provisions, comments received, and other information are on file and may be inspected at the address above at any time between 8:00 a.m. and 5:00 p.m., Monday through Friday. Copying of documents may be arranged through the Regional Water Board by calling (805) 549-3147.

F. Register of Interested Persons

Any person interested in being placed on the mailing list for information regarding the WDRs and NPDES permit should contact the Regional Water Board, reference this facility, and provide a name, address, and phone number.

G. Additional Information

Requests for additional information or questions regarding this Order should be directed to Michael Higgins at (805-542-4649) or mhiggins@waterboards.ca.gov.

S:\NPDES\NPDES Facilities\Santa Cruz Co\Olive Springs\2010 permit\Final Draft Order R3-2010-0039.doc