

# Santa Barbara Channelkeeper

## Preliminary Draft Staff Recommendations for an Updated Agricultural Order for the Central Coast Region

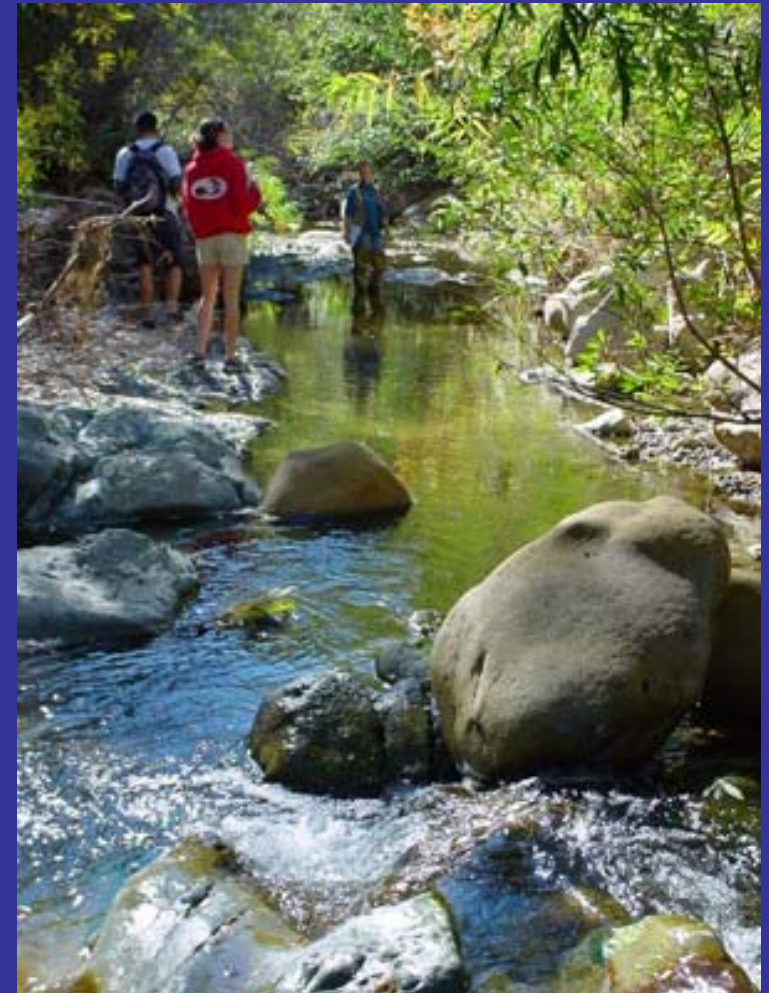
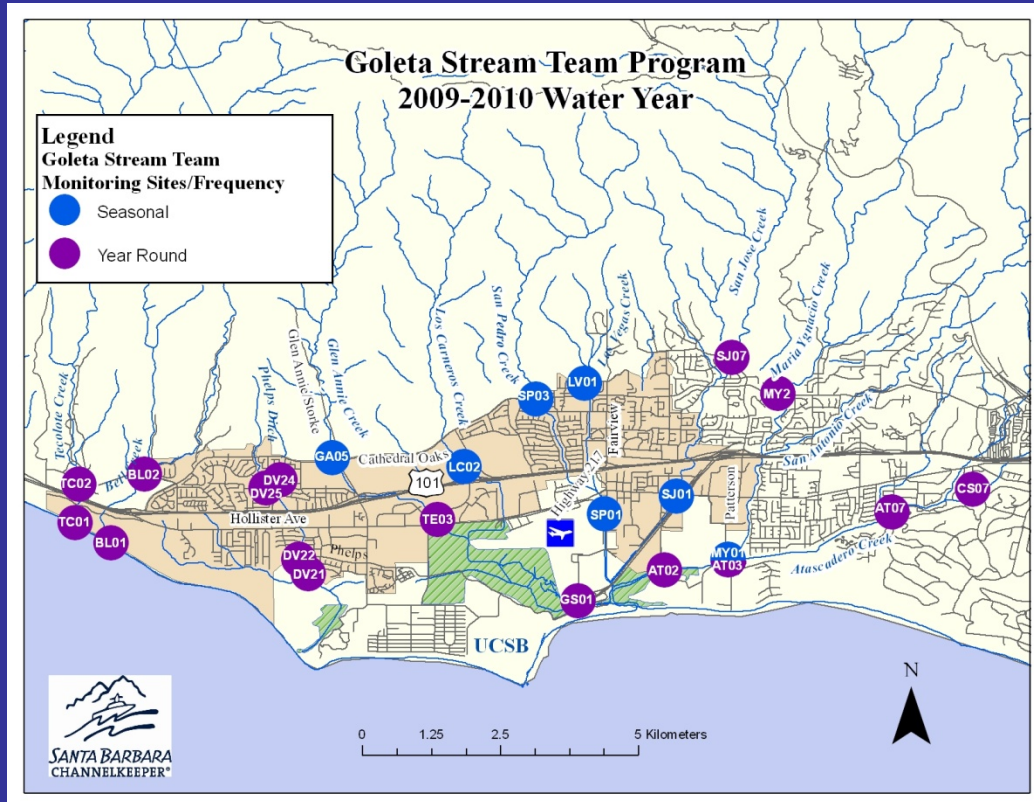


Kira Redmond  
Executive Director

May 12, 2010



# A decade of water quality monitoring





Over 800 volunteers have contributed more than 9,000 hours of volunteer service



# Agricultural activities are impairing water quality in our area

## Local Conditions

- 💧 Nutrient contamination
- 💧 Pesticides
- 💧 Sedimentation
- 💧 Extensive destruction of riparian habitat
- 💧 Eutrophication



## Regional Conditions

- 💧 Conditions are worsening in areas with the most severe problems
- 💧 Thousands are drinking contaminated water
- 💧 Drinking water treatment costs are increasing
- 💧 Toxicity is widespread

# Water quality monitoring requirements

The intent of the Agricultural Waiver Program is to regulate irrigated discharges. The monitoring program must verify the adequacy and effectiveness of the waiver's conditions.

## **The Problem:**

The existing monitoring program does not require that irrigated dischargers are monitored.

## **The Result:**

- 💧 It is impossible to identify specific problematic discharges
- 💧 It is impossible to evaluate grower progress
- 💧 Enforcement is hampered
- 💧 It is impossible to verify the adequacy and effectiveness of the waiver

**The Solution: Individual discharge monitoring  
MUST be required!**

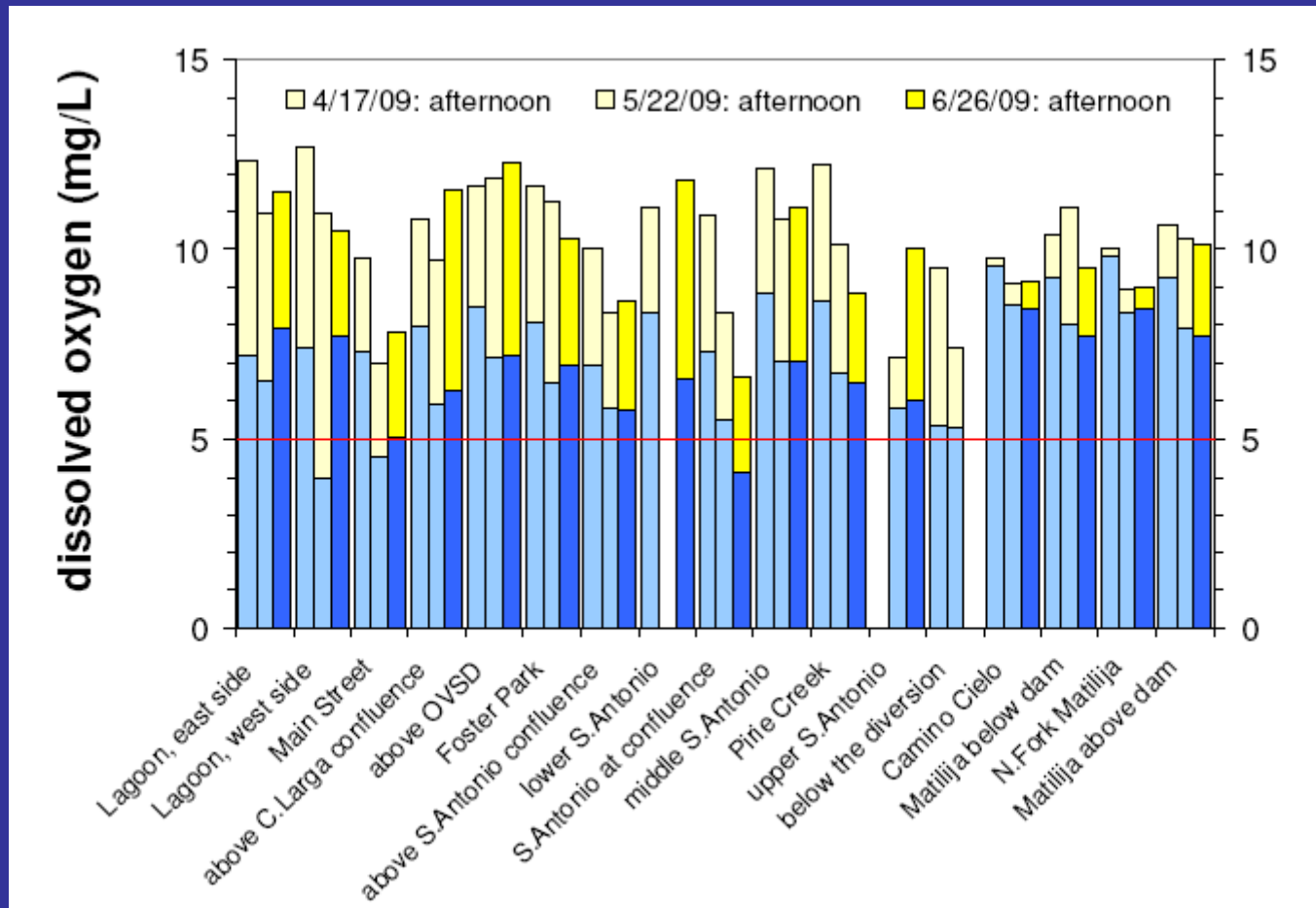
# Benefits of individual discharger monitoring

- 💧 Allows for verification that the program is working
- 💧 Allows growers to make informed farm management decisions
- 💧 Provides growers with a means of demonstrating they are protecting water quality, allowing them to be excluded from additional regulatory requirements
- 💧 Allows for identification of problematic discharges
- 💧 Improves enforceability



# Improved monitoring for eutrophic conditions

- 💧 Dissolved oxygen measurements must be collected in the early morning



# Stormwater Management

Urban  
stormwater  
runoff



Agricultural  
stormwater  
runoff

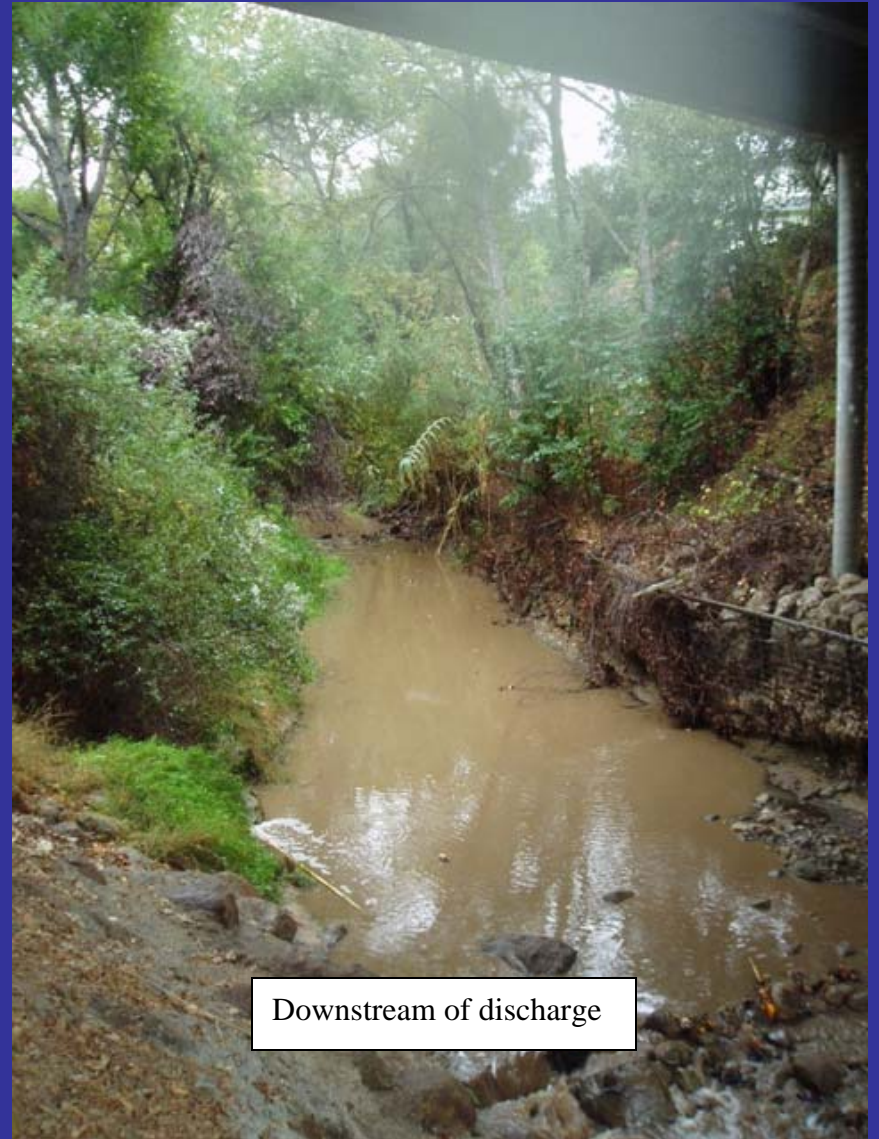


Source of  
runoff:  
upstream  
orchard





Upstream of discharge



Downstream of discharge











# Channelkeeper supports

- 💧 Numeric discharge requirements
- 💧 Groundwater monitoring
- 💧 Streamside buffers and riparian protections
- 💧 Timelines and milestones
- 💧 Individual discharge monitoring
- 💧 Improved stormwater management