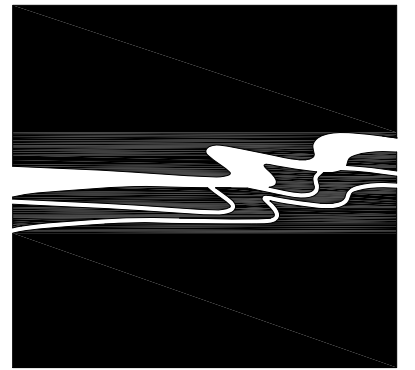
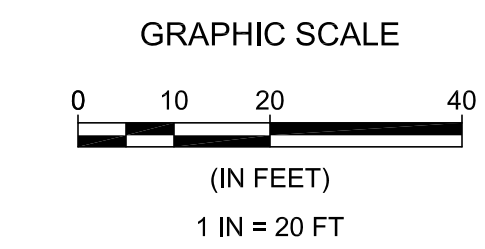


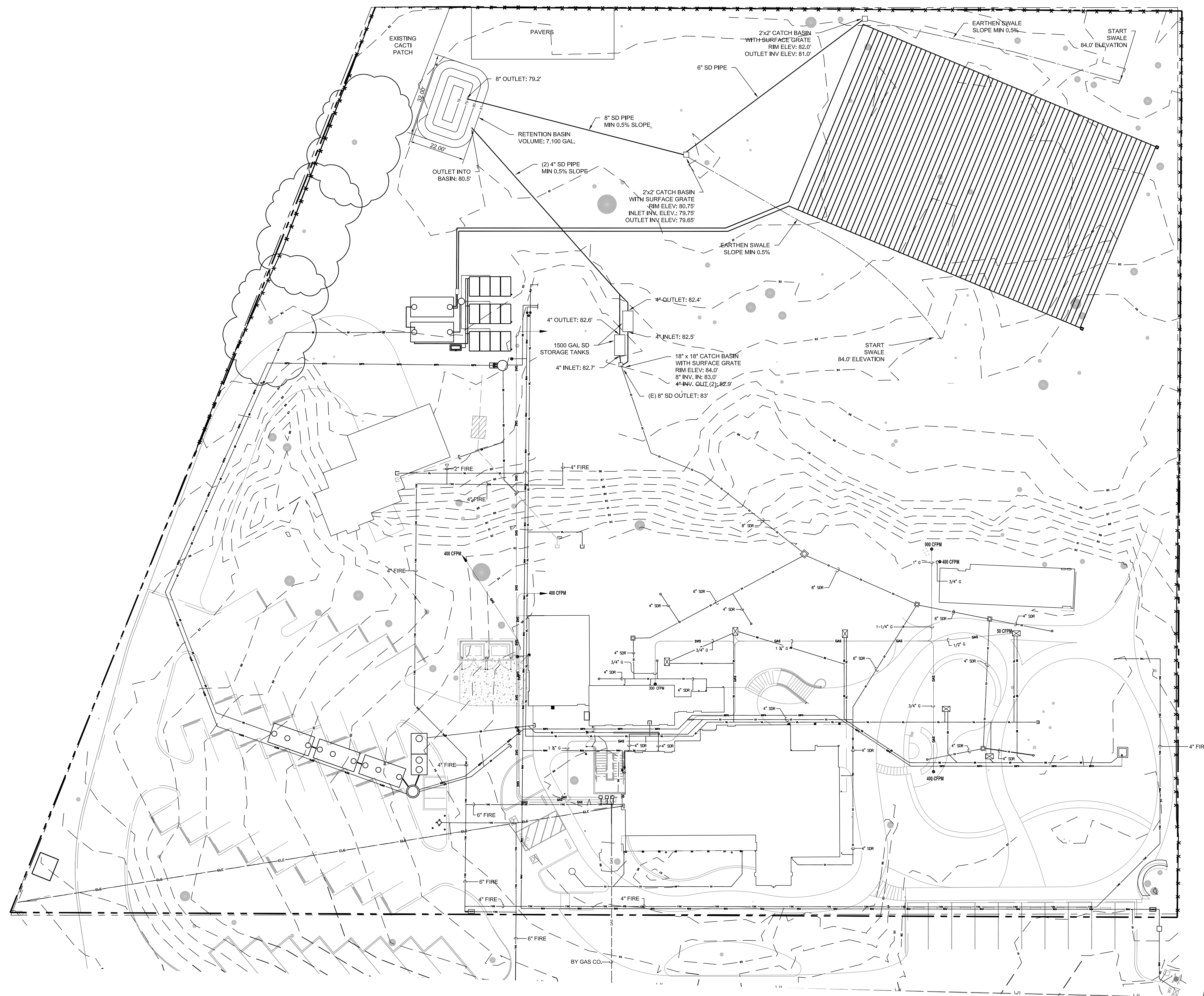
Central Coast Regional Water Quality Control Board  
Prosecution Team Evidence  
in the matter of  
Cease and Desist Order R3-2016-0015  
Exhibit 8



**WALLACE GROUP®**

CIVIL AND TRANSPORTATION ENGINEERING  
CONSTRUCTION MANAGEMENT  
LANDSCAPE ARCHITECTURE  
MECHANICAL ENGINEERING  
PLANNING  
PUBLIC WORKS ADMINISTRATION  
SURVEYING / GIS SOLUTIONS  
WATER RESOURCES

612 CLARION COURT  
SAN LUIS OBISPO, CA 93401  
T 805 544-4011 F 805 544-4294  
www.wallacegroup.us



SIGNATURE \_\_\_\_\_  
DATE SIGNED \_\_\_\_\_

These plans and specifications, and the ideas and designs incorporated herein, are instruments of service prepared for the construction of work shown hereon and shall not be used in whole or in part for any other project without written authority of Wallace Group, a California Corporation.

Copyright © 2007 Wallace Group, a California Corporation. All rights reserved. Copies of this drawing shall have this notice.

**CENTRALLY GROWN, CAMBRIA  
STORM DRAIN CONCEPT**

JOB #: 1137  
DESIGNERS: SJ  
DRAWN BY: SJ  
DATE: 1-5-15

**DRAWING NO.**  
**1**  
**1 OF 1 SHEETS**