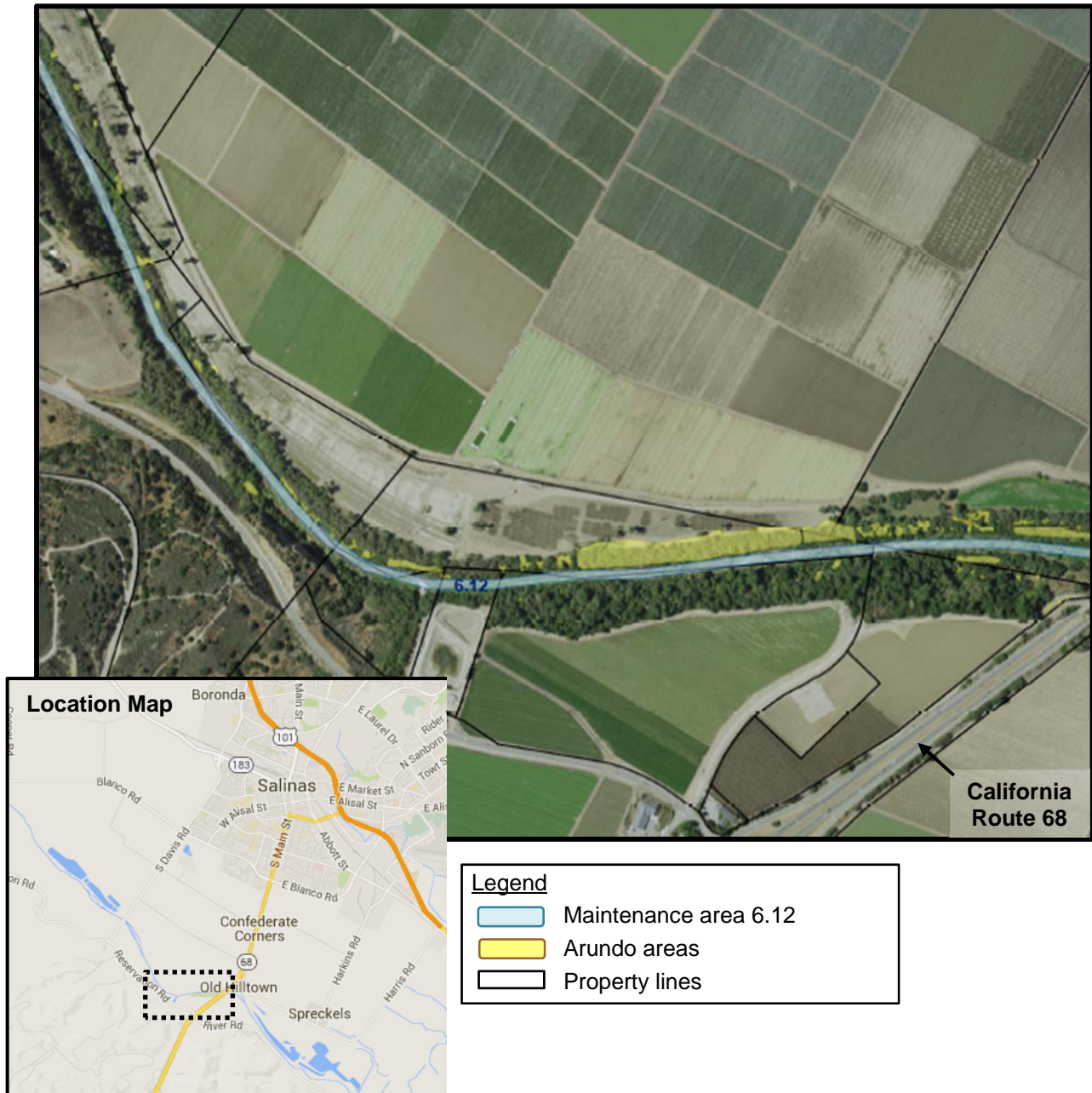


ATTACHMENT 4

Salinas River 2016-2025 Stream Maintenance Program
SELECTIVE TREATMENT AREA 6.12

As seen below, the selective treatment areas follow the low-flow channel much more closely than do designated secondary channels, and in some locations include the low-flow channel and/or the historically-preserved 10-foot buffer adjacent to the low-flow channel.



Notes

1. Imagery and selective treatment area mapping provided by MCWRA.