

Introduction

This document summarize sediment toxicity listing decisions from the 2010 303(d) list of impaired waters and associated lines of evidence (LOE) that form the basis of the decisions from streams monitored in the lower Salinas River watershed. The toxicity assessments are based on standard sediment toxicity evaluations of a sediment sample to an aquatic invertebrate, *Hyalella azteca* survival (%) 10 days. The monitoring samples were determined to be toxic based on the following definition by SWAMP (2004): Significant toxicity in the survival endpoint when compared to the negative control based on a statistical test with alpha of less than 5%, and less than the evaluation threshold (both criteria are met). The *Hyalella azteca* sediment toxicity compares the survival of a group in a sediment sample to a control group. The evaluation threshold for the toxicity comparison is 80% survival or more.

Data from three monitoring projects were used as LOE for the water bodies evaluated on 2010 303(d) list in the watershed. The three monitoring projects are the cooperative monitoring program for irrigated agriculture regulatory northern region (R3_CMPnorth), the Central Coast Ambient Monitoring Program and the State of California Surface Water Ambient Monitoring Program (CCAMP_SWAMP), and the Salinas monitoring by Don Weston (R3_Weston). For the 2010 303(d) list the monitoring project data was compiled into three separate data files but for the TMDL project the listing data was compiled into a single table and the results sorted by water body (refer to Table 3).

Water Body: Salinas River (Lower, estuary to near Gonzales Rd. crossing, watersheds 30910 and 30920)

Water Body ID: CAR3091101020021007193102 Decision ID: [14037](#) **Do Not List on 303(d) list (TMDL required list)**

Four lines of evidence are available in the administrative record to assess this pollutant in sediment samples. One of the 5 samples were toxic to invertebrate test organisms

LOE 24486

Data for this line of evidence for Salinas River (Lower) was collected at 1 monitoring site [**309DAV**-Salinas River at Davis Road] 3/29/2004

Number Samples/Exceedances 1/1

Beneficial Use Warm Freshwater Habitat

Data Reference [SWAMP Toxicity Data 2001-06](#)

LOE: 24564

Data for this line of evidence for Salinas River (Lower) was collected at 2 monitoring sites [**309SAC**-Salinas River at Chualar bridge on River Road, **309SSP** - Salinas River at Spreckles] 4/14/2005-5/26/2006

Number Samples/Exceedances 4/0

Beneficial Use Cold Freshwater Habitat

Data Reference [Central Coast Water Quality Preservation Inc toxicity data 2005/06](#)

LOE: 24565

Data for this line of evidence for Salinas River (Lower) was collected at 2 monitoring sites [**309SAC**- Salinas River at Chualar bridge on River Road, **309SSP** - Salinas River at Spreckles] 4/14/2005-5/26/2006

Number Samples/Exceedances 4/0

Beneficial Use Warm Freshwater Habitat

Data Reference [Central Coast Water Quality Preservation Inc toxicity data 2005/06](#)

LOE: 24485

Data for this line of evidence for Salinas River (Lower) was collected at 1 monitoring site [**309DAV**- Salinas River at Davis Road] 3/29/2004

Number Samples/Exceedances 1/1

Beneficial Use Cold Freshwater Habitat

Data Reference [SWAMP Toxicity Data 2001-06](#)

Water Body: Old Salinas River

Decision ID [14845](#) List on **303(d) list (TMDL required list)**

Four lines of evidence are available in the administrative record to assess this pollutant in sediment samples. Three of the 3 samples were toxic to invertebrate test organisms (exhibited a significant increase in mortality compared to the laboratory control) and therefore exceed the narrative General Objective for toxicity, set to protect for aquatic life beneficial uses.

LOE: 23962

Data for this line of evidence for Old Salinas River was collected at 1 monitoring site [**309OLD**-Old Salinas River at Monterey Dunes Way] 3/29/2004

Number Samples/Exceedances 1/1

Beneficial Use Warm Freshwater Habitat

Monitoring Project CCAMP_SWAMP

Data Reference [SWAMP Toxicity Data 2001-06](#)

LOE: 23702

Data for this line of evidence for Old Salinas River was collected at 1 monitoring site [**309OLD**-Old Salinas River at Monterey Dunes Way] 4/11/2005-5/25/2006

Number Samples/Exceedances 2/2

Beneficial Use Cold Freshwater Habitat

Monitoring Project R3_CMPnorth

Data Reference [Central Coast Water Quality Preservation Inc toxicity data 2005/06](#)

LOE: 23703

Data for this line of evidence for Old Salinas River was collected at 1 monitoring site [**309OLD**-Old Salinas River at Monterey Dunes Way] 4/11/2005-5/25/2006

Number Samples/Exceedances 2/2

Beneficial Use Warm Freshwater Habitat

Monitoring Project R3_CMPnorth

Data Reference [Central Coast Water Quality Preservation Inc toxicity data 2005/06](#)

LOE: 23961

Data for this line of evidence for Old Salinas River was collected at 1 monitoring site [**309OLD**-Old Salinas River at Monterey Dunes Way] 3/29/2004

Number Samples/Exceedances 1/1

Beneficial Use Cold Freshwater Habitat

Monitoring Project CCAMP_SWAMP

Data Reference [SWAMP Toxicity Data 2001-06](#)

Water Body: Tembladero Slough

Decision ID [12985](#) **List on 303(d) list (TMDL required list)**

Two lines of evidence are available in the administrative record to assess this pollutant in water samples. All 3 samples were toxic to invertebrate test organisms (exhibited a significant increase in mortality compared to the laboratory control) and therefore exceed the narrative General Objective for toxicity, set to protect for aquatic life beneficial uses.

LOE: 24642

Data for this line of evidence for Tembladero Slough was collected at 1 monitoring site [**309TEH** - Tembladero Slough at Haro] 4/12/2005-5/24/2006

Number Samples/Exceedances 2/2

Beneficial Use Warm Freshwater Habitat

Monitoring Project R3_CMPnorth

Data Reference [Central Coast Water Quality Preservation Inc toxicity data 2005/06](#)

LOE: 24643

Data for this line of evidence for Tembladero Slough was collected at 1 monitoring site [**309TDW**- Tembladero Slough at Monterey Dunes Way] 3/29/2004

Number Samples/Exceedances 1/1

Beneficial Use Warm Freshwater Habitat

Monitoring Project CCAMP_SWAMP

Data Reference [SWAMP Toxicity Data 2001-06](#)

Water Body: Merrit Ditch

Decision ID [15306](#) **List on 303(d) list (TMDL required list)**

Two lines of evidence are available in the administrative record to assess this pollutant in sediment samples. Both of the 2 samples were toxic to invertebrate test organisms (exhibited a significant increase in mortality compared to the laboratory control) and therefore exceed the narrative General Objective for toxicity, set to protect for aquatic life beneficial uses.

LOE: 23873

Data for this line of evidence for Merritt Ditch was collected at 1 monitoring site [309MER - Merrit Ditch upstream Highway 183] 4/12/2005-5/24/2006

Number Samples/Exceedances 2/2

Beneficial Use Cold Freshwater Habitat

Monitoring Project R_3CMPnorth

Data Reference [Central Coast Water Quality Preservation Inc toxicity data 2005/06](#)

LOE: 23874

Data for this line of evidence for Merritt Ditch was collected at 1 monitoring site [309MER - Merrit Ditch upstream Highway 183] 4/12/2005-5/24/2006

Number Samples/Exceedances 2/2

Beneficial Use Warm Freshwater Habitat

Monitoring Project R_3CMPnorth

Data Reference [Central Coast Water Quality Preservation Inc toxicity data 2005/06](#)

Water Body: Espinosa Slough

Decision ID [15915](#) **List on 303(d) list (TMDL required list)**

One line of evidence is available in the administrative record to assess this pollutant in sediment samples. Both of the 2 samples were toxic to invertebrate test organisms (exhibited a significant increase in mortality compared to the laboratory control) and therefore exceed the narrative General Objective for toxicity, set to protect for aquatic life beneficial uses.

LOE: 24213

Data for this line of evidence for Espinosa Slough was collected at 1 monitoring site [309ESP - Espinosa Slough up stream Highway 183] 4/12/2005-5/25/2006

Number Samples/Exceedances 2/2

Beneficial Use Warm Freshwater Habitat

Monitoring Project R_3CMPnorth

Data Reference [Central Coast Water Quality Preservation Inc toxicity data 2005/06](#)

Water Body: Alisal Slough (Monterey County)

Decision ID [16289](#) **List on 303(d) list (TMDL required list)**

Two lines of evidence are available in the administrative record to assess this pollutant in sediment samples. Two of the 3 samples were toxic to invertebrate test organisms (exhibited a significant increase in mortality compared to the laboratory control) and therefore exceed the narrative General Objective for toxicity, set to protect for aquatic life beneficial uses.

LOE: 27949

Data for this line of evidence for Alisal Slough (Salinas) was collected at 1 monitoring site [309ASB - Alisal Slough at White Barn] 4/11/2005-5/24/2006

Number Samples/Exceedances 3/2

Beneficial Use Warm Freshwater Habitat

Monitoring Project R3_CMPnorth

Data Reference [Central Coast Water Quality Preservation Inc toxicity data 2005/06](#)

Note Staff reviewed the data reference for the lines of evidence and found only 2 samples and exceedances for sediment toxicity at site 309ASB.

LOE: 27948

Data for this line of evidence for Alisal Slough (Salinas) was collected at 1 monitoring site [**309ASB** - Alisal Slough at White Barn] 4/11/2005-5/24/2006

Number Samples/Exceedances 3/2

Beneficial Use Warm Freshwater Habitat

Monitoring Project R3_CMPnorth

Data Reference [Central Coast Water Quality Preservation Inc toxicity data 2005/06](#)

Water Body: Blanco Drain

Water Body ID: CAR3091101019981209161509 Decision ID: [16070](#) **Do Not List on 303(d) list (TMDL required list)**

One line of evidence is available in the administrative record to assess this pollutant in sediment samples. Neither of the samples were toxic to invertebrate test organisms (exhibit a significant increase in mortality compared to the laboratory control) and therefore do not exceed the narrative General Objective for toxicity, set to protect for aquatic life beneficial uses.

LOE: 23626

Data for this line of evidence for Blanco Drain was collected at 1 monitoring site [**309BLA** - Blanco Drain below pump] 4/13/2005-5/24/2006

Number Samples/Exceedances 2/0

Beneficial Use Warm Freshwater Habitat

Monitoring Project R3_CMPnorth

Data Reference [Central Coast Water Quality Preservation Inc toxicity data 2005/06](#)

Water Body: Salinas Reclamation Canal

Decision ID [14067](#) **List on 303(d) list (TMDL required list)**

Two lines of evidence are available in the administrative record to assess this pollutant in sediment samples. Eight of the 9 samples were toxic to invertebrate test organisms (exhibited a significant increase in mortality compared to the laboratory control) and therefore exceed the narrative General Objective for toxicity, set to protect for aquatic life beneficial uses.

LOE: 24484

Data for this line of evidence for Salinas Reclamation Canal was collected at 2 monitoring sites [**309ALG** - Salinas Reclamation Canal at La Guardia, **309JON** - Salinas Reclamation Canal at San Jon Road].

4/11/2005-5/25/2006

Number Samples/Exceedances 4/3

Beneficial Use Warm Freshwater Habitat

Monitoring Project R3_CMPnorth

Data Reference [Central Coast Water Quality Preservation Inc toxicity data 2005/06](#)

LOE: 24491

Data for this line of evidence for Salinas Reclamation Canal was collected at 5 monitoring sites [**309SR1** - Salinas Reclamation Ditch at Moffett, **309SR2** - Salinas Reclamation Ditch at Caesar Chaves Park, **309SR3** - Salinas Reclamation Ditch at Sheerwood, **309SR4** - Salinas Reclamation Ditch at Victor Street, **309SR5** - Salinas Reclamation Ditch at San Jon Road]

9/23/2005

Number Samples/Exceedances 5/5

Beneficial Use Warm Freshwater Habitat

Monitoring Project R3_Weston

Data Reference [Don Westin Salinas Toxicity Data](#)

Water Body: Natividad Creek

Water Body: CAR3091101020050531125140 Decision ID: [15427](#) **List on 303(d) list (TMDL required list)**

Four lines of evidence are available in the administrative record to assess this pollutant in sediment samples. Five of the 5 samples were toxic to invertebrate test organisms (exhibited a significant increase in mortality compared to the laboratory control) and therefore exceed the narrative General Objective for toxicity, set to protect for aquatic life beneficial uses.

LOE: 23923

Data for this line of evidence for Natividad Creek was collected at 3 monitoring sites [**309SN1** - Natividad Creek at Boranda, **309SN2** - Natividad Creek at Freedom Parkway, **309SN3** - Natividad Creek at Gee Street].

9/23/2005

Number Samples/Exceedances 3/3

Monitoring Project R3_Weston

Data Reference [Don Westin Salinas Toxicity Data](#)

LOE: 23930

Data for this line of evidence for Natividad Creek was collected at 3 monitoring sites [**309SN1** - Natividad Creek at Boranda, **309SN2** - Natividad Creek at Freedom Parkway, **309SN3** - Natividad Creek at Gee Street] 9/23/2005

Number Samples/Exceedances 3/3

Monitoring Project R3_Weston

Data Reference [Don Westin Salinas Toxicity Data](#)

LOE: 23922

Data for this line of evidence for Natividad Creek was collected at 1 monitoring site [**309NAD** - Natividad Creek up stream of Salinas Reclamation Canal] (R3 4/13/2005-5/25/2006

Number Samples/Exceedances 2/2

Monitoring Project R3_CMPnorth

Data Reference [Central Coast Water Quality Preservation Inc toxicity data 2005/06](#)

LOE: 23921

Data for this line of evidence for Natividad Creek was collected at 1 monitoring site [**309NAD** - Natividad Creek up stream of Salinas Reclamation Canal] 4/13/2005-5/25/2006

Number Samples/Exceedances 2/2

Monitoring Project R3_CMPnorth

Data Reference [Central Coast Water Quality Preservation Inc toxicity data 2005/06](#)

Water Body: Gabilan Creek

Decision ID [15907](#) **List on 303(d) list (TMDL required list)**

Two lines of evidence are available in the administrative record to assess this pollutant in sediment samples. Four of the 5 samples were toxic to invertebrate test organisms (exhibited a significant increase in mortality compared to the laboratory control) and therefore exceed the narrative General Objective for toxicity, set to protect for aquatic life beneficial uses.

LOE: 24067

Data for this line of evidence for Gabilan Creek was collected at 1 monitoring site [**309GAB**-Gabilan Creek at Independence Road and East Boranda Road] 4/13/2005-5/25/2006

Number Samples/Exceedances 2/2

Beneficial Use Warm Freshwater Habitat

Monitoring Project R3_CMPnorth

Data Reference [Central Coast Water Quality Preservation Inc toxicity data 2005/06](#)

LOE: 24197

Data for this line of evidence for Gabilan Creek was collected at 3 monitoring sites [**309SG1** - Gabilan Creek at Old Stage Road, **309SG2** - Gabilan Creek at Boranda, **309SG3** - Gabilan Creek at Independence and Lexington Dr.] 9/23/2005

Number Samples/Exceedances 3/2

Beneficial Use Warm Freshwater Habitat

Monitoring Project R3_Weston

Data Reference [Don Westin Salinas Toxicity Data](#)

Water Body: Alisal Creek (Monterey County)

Water Body ID: CAR3097009519990222130537

Decision ID: [16087](#) **Do Not List on 303(d) list (TMDL required list)**

Two lines of evidence are available in the administrative record to assess this pollutant in sediment samples. One of the 2 samples were toxic to invertebrate test organisms (exhibit a significant increase in mortality compared to the laboratory control) and therefore do not exceed the narrative General Objective for toxicity, set to protect for aquatic life beneficial uses.

LOE: 23550

Data for this line of evidence for Alisal Creek (Salinas) was collected at 2 monitoring sites [**309SA1** - Alisal Creek at Old Stage Road, **309SA2** - Alisal Creek at Alisal Road] 9/23/2005

Number Samples/Exceedances 2/1

Beneficial Use Cold Freshwater Habitat

Monitoring Project R3_Weston

Data Reference [Don Westin Salinas Toxicity Data](#)

LOE: 23551

Data for this line of evidence for Alisal Creek (Salinas) was collected at 2 monitoring sites [**309SA1** - Alisal Creek at Old Stage Road, **309SA2** - Alisal Creek at Alisal Road] 9/23/2005

Number Samples/Exceedances 2/1

Beneficial Use Warm Freshwater Habitat

Monitoring Project R3_Weston

Data Reference [Don Westin Salinas Toxicity Data](#)

Water Body: Quail Creek

Water Body ID: CAR3091101020021007193102 Decision ID: [14244](#) **List on 303(d) list (TMDL required list)**

Two lines of evidence are available in the administrative record to assess this pollutant in sediment samples. Both of the 2 samples were toxic to invertebrate test organisms (exhibited a significant increase in mortality compared to the laboratory control) and therefore exceed the narrative General Objective for toxicity, set to protect for aquatic life beneficial uses.

LOE: 24458

Data for this line of evidence for Quail Creek was collected at 1 monitoring site [**309QUI** - Quail Creek at HWY 101, between Spence and Potter Roads (trib. to Salinas R.)] 4/14/2005-5/25/2006

Number Samples/Exceedances 2/2

Beneficial Use Cold Freshwater Habitat

Monitoring Project R3_CMPnorth

Data Reference [Central Coast Water Quality Preservation Inc toxicity data 2005/06](#)

LOE: 24459

Data for this line of evidence for Quail Creek was collected at 1 monitoring site [**309QUI** - Quail Creek at HWY 101, btwn Spence and Potter Roads (trib. to Salinas R.)] 4/14/2005-5/25/2006

Number Samples/Exceedances 2/2

Beneficial Use Warm Freshwater Habitat

Monitoring Project R3_CMPnorth

Data Reference [Central Coast Water Quality Preservation Inc toxicity data 2005/06](#)

Waterbody: Chualar Creek

Water Body ID: CAR3091900020080604161337 Decision ID: [15940](#) **Do Not List on 303(d) list (TMDL required list)**

Two lines of evidence are available in the administrative record to assess this pollutant in sediment samples. The single sample was toxic to invertebrate test organisms (exhibit a significant increase in mortality compared to the laboratory control) and therefore did not exceed the narrative General Objective for toxicity, set to protect for aquatic life beneficial uses.

LOE: 23841

Data for this line of evidence for Chualar Creek was collected at 1 monitoring site [**309CRR** - Chualar Creek at River Road] 5/25/2006

Number Samples/Exceedances 1/1

Beneficial Use Warm Freshwater Habitat

Monitoring Project R3_CMPnorth

Data Reference [Central Coast Water Quality Preservation Inc toxicity data 2005/06](#)

LOE: 23840

Data for this line of evidence for Chualar Creek was collected at 1 monitoring site [**309CRR** - Chualar Creek at River Road] 5/25/2006

Number Samples/Exceedances 1/1

Beneficial Use Cold Freshwater Habitat

Monitoring Project R3_CMPnorth

Data Reference [Central Coast Water Quality Preservation Inc toxicity data 2005/06](#)

Tables and Figures:

Table 1 2010 303(d) sediment toxicity listing decisions for surface waters in the lower Salinas River watershed and monitoring sites

Water Body Name	Monitoring site ID	Excedances / Samples	Impairment for Sediment Toxicity	WBID
Alisal Creek	309SA1-2	1/2	No	CAR3097009519990222130537
Alisal Slough	309ASB	2/3	Yes	CAR3091101020090311204028
Blanco Drain	309BLA	0/2	No	CAR3091101019981209161509
Espinosa Slough	309ESP	2/2	Yes	CAR3091101019981230135152
Gabilan Creek	309GAB, 309SG1-3	4/5	Yes	CAR3091900019990304092345
Merrit Ditch	309MER	2/2	Yes	CAR3091101020080604152147
Natividad Creek	309NAD, 309NAD1-3	5/5	Yes	CAR3091101020050531125140
Old Salinas River	309OLD	3/3	Yes	CAR3091101020080611145518
Quail Creek	309QUI	2/2	Yes	CAR3091900020011227140647
Salinas Reclamation Canal	309ALG, 309JON, 309SR1-5	8/9	Yes	CAR3091101019980828112229
Salinas River (lower)	309DAV, 309SAP, 309SSP	1/5	No	CAR3091101020021007193102
Tembladero Slough	309TEH, 309TDW	3/3	Yes	CAR3091101019981209131830

Table 2 Sites monitored for the 303(d) list assessment, site locations and descriptions

Site ID	N Latitude	W Longitude	Water Body Name	Description
309SA1	36.69238	-121.56915	Alisal Creek	Alisal Creek @ Old Stage Rd.
309SA2	36.64567	-121.57698	Alisal Creek	Alisal Creek @ Alisal Rd.
309ASB	36.72545	-121.73017	Alisal Slough	Alisal Slough at white barn
309BLA	36.70852	-121.7489	Blanco Drain	Blanco Drain below pump
309CRR	36.56376	-121.51393	Chualar Creek	Chualar Creek at River Road
309ESP	36.73684	-121.73386	Espinosa Slough	Espinosa Slough upstream of Alisal Slough
309GAB/309SG2	36.71553	-121.61643	Gabilan Creek	Gabilan Creek @ Boronda Rd.
309SG1	36.78040	-121.58541	Gabilan Creek	Gabilan Creek @ Old Stage Rd.
309SG3	36.70030	-121.62196	Gabilan Creek	Gabilan Creek @ Independence
309MER	36.75184	-121.74208	Merritt Ditch	Merritt Ditch upstream from Highway 183
309NAD	36.70808	-121.59958	Natividad Creek	Natividad Creek upstream of Reclamation Ditch
309SN1	36.70202	-121.60262	Natividad Creek	Natividad Creek @ Boronda Rd.
309SN2	36.69887	-121.61067	Natividad Creek	Natividad Creek @ Freedom Pkwy.
309SN3	36.6902	-121.62151	Natividad Creek	Natividad Creek @ Gee St
309OLD	36.77229	-121.78785	Old Salinas River	309OLD-Old Salinas River at Monterey Dunes Way
309QUI	36.60956	-121.56137	Quail Creek	Quail Creek at Highway 101
309ALG,	36.65683	-121.6135	Salinas Reclamation Canal	Reclamation Ditch at La Guardia
309JON / 309SR5	36.70475	-121.70525	Salinas Reclamation Canal	Reclamation Ditch @ San Jon Rd
309SR1	36.65858	-121.61379	Salinas Reclamation Canal	Reclamation Ditch @ Moffett St.
309SR2	36.67978	-121.63735	Salinas Reclamation Canal	Reclamation Ditch @ Cesar Chavez Park
309SR3	36.68507	-121.64772	Salinas Reclamation Canal	Reclamation Ditch @ Sherwood Dr.
309SR4	36.68426	-121.66735	Salinas Reclamation Canal	Reclamation Ditch @ Victor
309DAV	36.646806	-121.701385	Salinas River	Salinas River at Davis Road
309SAC	36.55376	-121.54774	Salinas River	Salinas River at Chualar bridge
309SSP	36.62905	-121.68815	Salinas River	Salinas River at Sprekles
309TEH,	36.75932	-121.75487	Tembladero Slough	Tembladero Slough at Haro
309TDW	36.772183	-121.786597	Tembladero Slough	Tembladero Slough at Molera Rd

Table 3 Water bodies and water quality monitoring data evaluated for the toxicity listings, water bodies in bold are on the 303(d) list as impaired / TMDL required

Site ID	Water body	Project	Sample Date	Toxicity	Decision ID
309ASB	Alisal Slough	R3_CMPnorth	04/11/05	Yes	16289
309ASB	Alisal Slough	R3_CMPnorth	05/24/06	Yes	16289
309SA1	Alisal Creek	R3_Weston	09/23/05	No	16087
309SA2	Alisal Creek	R3_Weston	09/23/05	Yes	16087
309BLA	Blanco Drain	R3_CMPnorth	04/13/05	Yes	16070
309BLA	Blanco Drain	R3_CMPnorth	05/24/06	No	16070
309CRR	Chualar Creek	R3_CMPnorth	05/25/06	Yes	15940
309ESP	Espinosa Slough	R3_CMPnorth	04/12/05	Yes	15915
309ESP	Espinosa Slough	R3_CMPnorth	05/25/06	Yes	15915
309GAB	Gabilan Creek	R3_CMPnorth	04/13/05	Yes	15907
309GAB	Gabilan Creek	R3_CMPnorth	05/25/06	Yes	15907
309SG1	Gabilan Creek	R3_Weston	09/23/05	No	15907
309SG2	Gabilan Creek	R3_Weston	09/23/05	Yes	15907
309SG3	Gabilan Creek	R3_Weston	09/23/05	Yes	15907
309MER	Merritt Ditch	R3_CMPnorth	04/12/05	Yes	15306
309MER	Merritt Ditch	R3_CMPnorth	05/24/06	Yes	15306
309NAD	Natividad Creek	R3_CMPnorth	04/13/05	Yes	15427
309NAD	Natividad Creek	R3_CMPnorth	05/25/06	Yes	15427
309SN1	Natividad Creek	R3_Weston	09/23/05	Yes	15427
309SN2	Natividad Creek	R3_Weston	09/23/05	Yes	15427
309SN3	Natividad Creek	R3_Weston	09/23/05	Yes	15427
309OLD	Old Salinas River	CCAMP_SWAMP	03/29/04	Yes	14845
309OLD	Old Salinas River	R3_CMPnorth	04/11/05	Yes	14845
309OLD	Old Salinas River	R3_CMPnorth	05/25/06	Yes	14845

Site ID	Water body	Project	Sample Date	Toxicity	Decision ID
309QUI	Quail Creek	R3_CMPnorth	04/14/05	Yes	14244
309QUI	Quail Creek	R3_CMPnorth	05/25/06	Yes	14244
309JON	Salinas Reclamation Canal	R3_CMPnorth	04/11/05	Yes	14067
309ALG	Salinas Reclamation Canal	R3_CMPnorth	04/13/05	Yes	14067
309SR1	Salinas Reclamation Canal	R3_Weston	09/23/05	Yes	14067
309SR2	Salinas Reclamation Canal	R3_Weston	09/23/05	Yes	14067
309SR3	Salinas Reclamation Canal	R3_Weston	09/23/05	Yes	14067
309SR4	Salinas Reclamation Canal	R3_Weston	09/23/05	Yes	14067
309SR5	Salinas Reclamation Canal	R3_Weston	09/23/05	Yes	14067
309JON	Salinas Reclamation Canal	R3_CMPnorth	05/24/06	Yes	14067
309ALG	Salinas Reclamation Canal	R3_CMPnorth	05/25/06	Yes	14067
309DAV	Salinas River (lower)	CCAMP_SWAMP	03/29/04	Yes	14037
309SAC	Salinas River (lower)	R3_CMPnorth	04/14/05	No	14037
309SSP	Salinas River (lower)	R3_CMPnorth	04/14/05	No	14037
309SAC	Salinas River (lower)	R3_CMPnorth	05/26/06	No	14037
309SSP	Salinas River (lower)	R3_CMPnorth	05/26/06	No	14037
309TDW	Tembladero Slough	CCAMP_SWAMP	03/29/04	Yes	12985
309TEH	Tembladero Slough	R3_CMPnorth	04/12/05	Yes	12985
309TEH	Tembladero Slough	R3_CMPnorth	05/24/06	Yes	12985

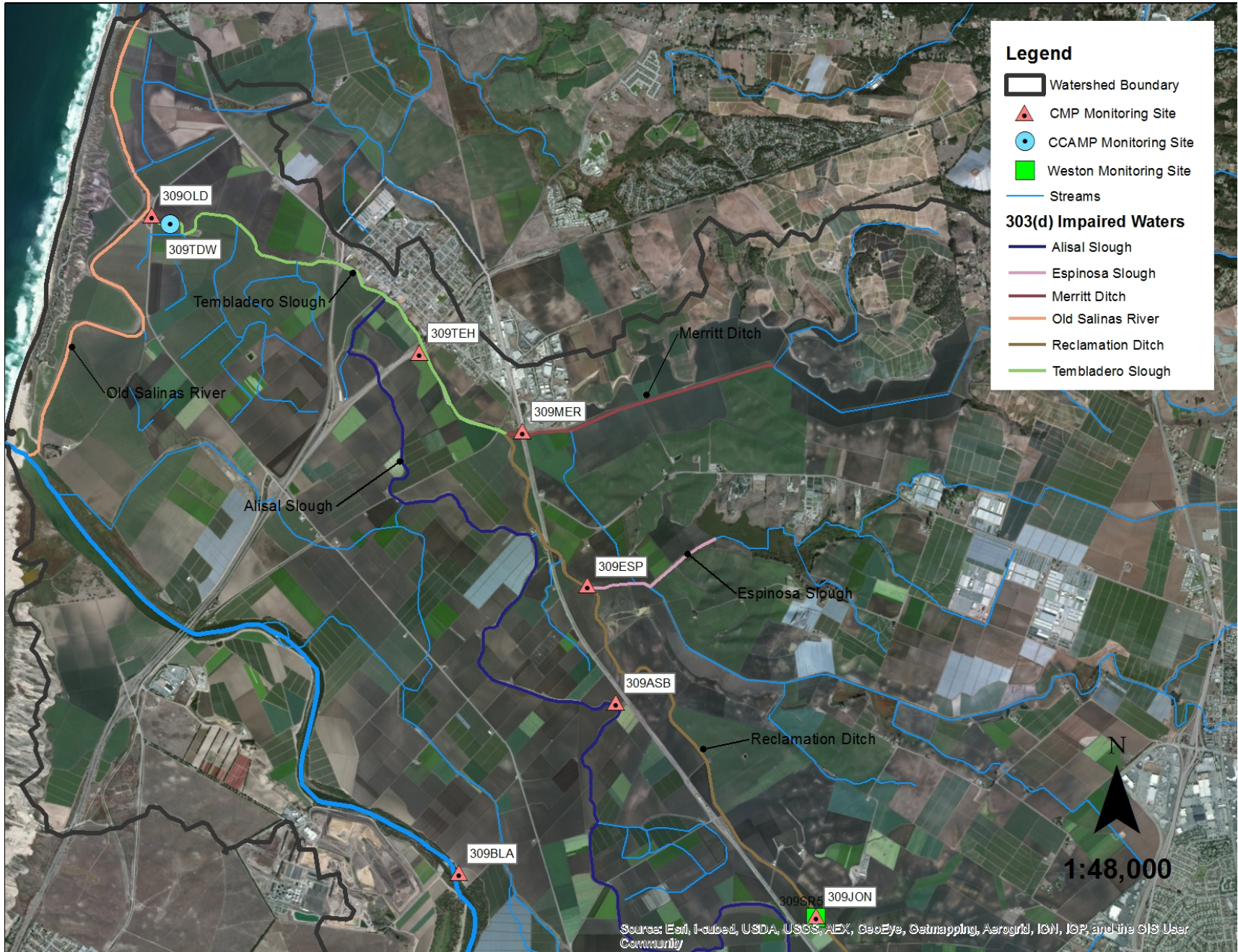


Figure 1 Tembladero Slough subwatershed

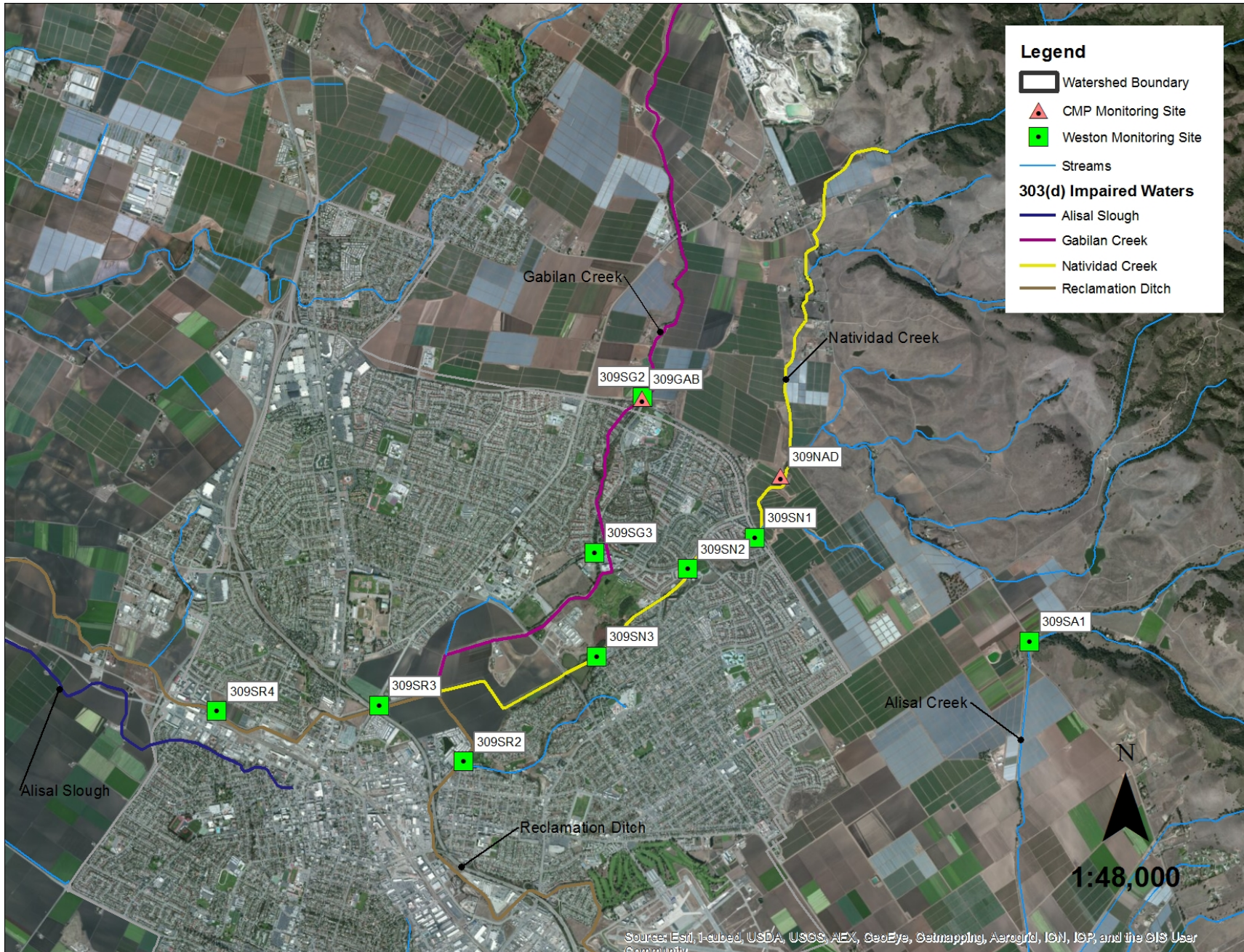


Figure 2 Gabilan and Natividad Creek watersheds

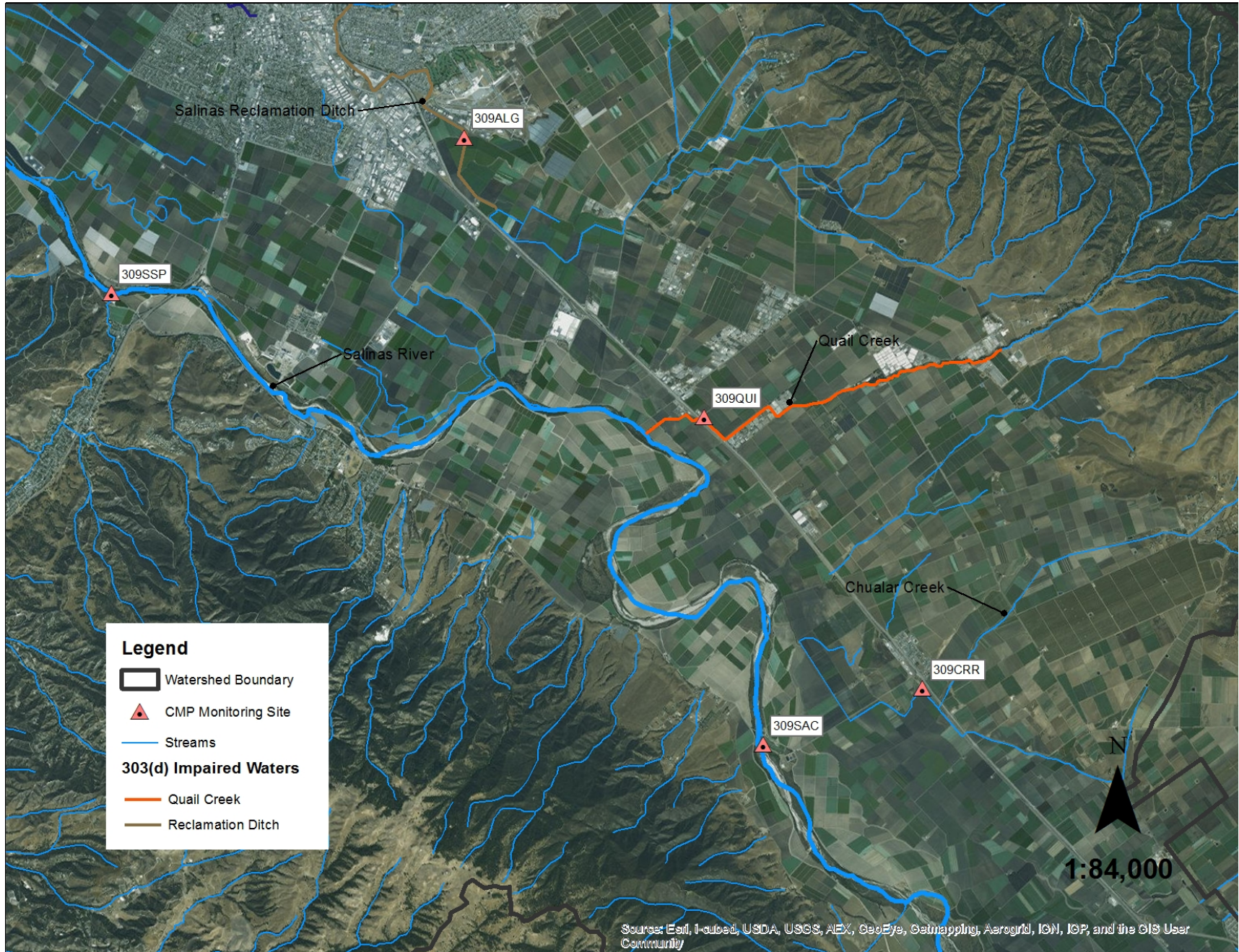


Figure 3 Map of the Salinas River, Quail Creek, and Chualar Creek and monitoring sites