



---

## Central Valley Regional Water Quality Control Board

19 August 2019

Price Walker  
Elliott Homes, Inc.  
Palladio Parkway #521  
Folsom, CA 95630

**CERTIFIED MAIL**  
7018 3090 0000 5203 5175

**NOTICE OF APPLICABILITY FOR COVERAGE UNDER GENERAL ORDER R5-2019-0023, WASTE DISCHARGE REQUIREMENTS AND CLEAN WATER ACT SECTION 401 WATER QUALITY CERTIFICATION OF THE SOUTH SACRAMENTO HABITAT CONSERVATION PLAN PROGRAMMATIC GENERAL PERMIT, VERANDA AT RIVER OAKS PROJECT (WDID#5A34CR00759-001), SACRAMENTO COUNTY**

On 12 July 2019, Elliott Homes, Inc. (Applicant) submitted a Notice of Intent (NOI) to enroll under and comply with Central Valley Regional Water Quality Control Board (Central Valley Water Board) General Order R5-2019-0023, Waste Discharge Requirements and Clean Water Act Section 401 Water Quality Certification of the South Sacramento Habitat Conservation Plan Programmatic General Permit.

The Central Valley Water Board has reviewed your enrollment materials and finds the Veranda at River Oaks Project (Project) meets the requirements of, and is hereby enrolled under, General Order R5-2019-0023. You may proceed with your Project in accordance with the Order.

A copy of the General Order R5-2019-0023 can be found on the [Central Valley Water Board's Adopted Orders webpage](https://www.waterboards.ca.gov/board_decisions/adopted_orders/water_quality/2004/wqo/wqo2004-0004.pdf) ([https://www.waterboards.ca.gov/board\\_decisions/adopted\\_orders/water\\_quality/2004/wqo/wqo2004-0004.pdf](https://www.waterboards.ca.gov/board_decisions/adopted_orders/water_quality/2004/wqo/wqo2004-0004.pdf)).

Please familiarize yourself with the requirements of General Order R5-2019-0023. You are responsible for complying with all applicable Order requirements. Failure to comply with General Order R5-2019-0023 constitutes a violation of the California Water Code and may result in enforcement action or termination of enrollment under the Order.

**PROJECT DESCRIPTION:**

The 5.63-acre Project consists of filling vernal pool and wetland habitat for mass grading in preparation of a private residential development. The Project will

KARL E. LONGLEY ScD, P.E., CHAIR | PATRICK PULUPA, ESQ., EXECUTIVE OFFICER

permanently impact 0.319 acre of vernal pool habitat and 0.01 acre of wetland habitat. Permanent impacts result from placing native soil into vernal pool and wetland habitat during naturally dry conditions.

No dewatering will occur within the Project area. No wet concrete will be placed into vernal pool and wetland habitat.

**ADDITIONAL CONDITION:**

The Applicant has obtained coverage under the National Pollutant Discharge Elimination System (NPDES) General Permit for Storm Water Discharges Associated with Construction and Land Disturbance Activities Order 2009-0009-DWQ, as amended for discharges to surface waters comprised of storm water associated with construction activity, including, but not limited to, demolition, clearing, grading, excavations, and other land disturbance activities of one or more acres, or where projects disturb less than one acre but are part of a larger common plan of development that in total disturbs one or more acres (WDID#5S34C387146).

**PROJECT LOCATION:**

The Project is located on the northeast corner of Carillion Boulevard and Walnut Avenue in the City of Galt.

Section 14, Township 05 North, Range 06 East, MDB&M

Latitude: 38.279928° N and Longitude: 121.292421° W

**PROJECT SCHEDULE:**

15 August – 15 October

**APPLICATION FEE RECEIVED:**

An application fee of \$4,781.00 was received on 12 July 2019. The fee amount was determined as required by California Code of Regulations, title 23, sections 3833(b)(3) and 2200(a)(3), and was calculated as category A - Fill & Excavation Discharges (fee code 84) with the dredge and fill fee calculator.

**PROJECT SPECIFIC AVOIDANCE AND MINIMIZATION MEASURES:**

The Applicant shall implement the General Avoidance and Minimization Measures listed in Appendix D – Impact Avoidance and Minimization Measures (AMMs) of the SSHCP EIS/EIR and the Best Management Practices (BMPs) listed in section IX in the General Order R5-2019-0023.

**WATER QUALITY MONITORING – NOT APPLICABLE**

No sampling is required for the filling of 0.319 acre of vernal pool and 0.01 acre of wetland habitat during naturally dry conditions.

If you have any questions regarding this Notice of Applicability, please contact Jordan Hensley at (916) 464-4812 or [Jordan.Hensley@waterboards.ca.gov](mailto:Jordan.Hensley@waterboards.ca.gov).

*Original Signed by Bryan Smith for:*

Patrick Pulupa  
Executive Officer

Attachments: Figure 1 – Project Location Map  
Figure 2 – Site Impact Map

cc: [Via email only]

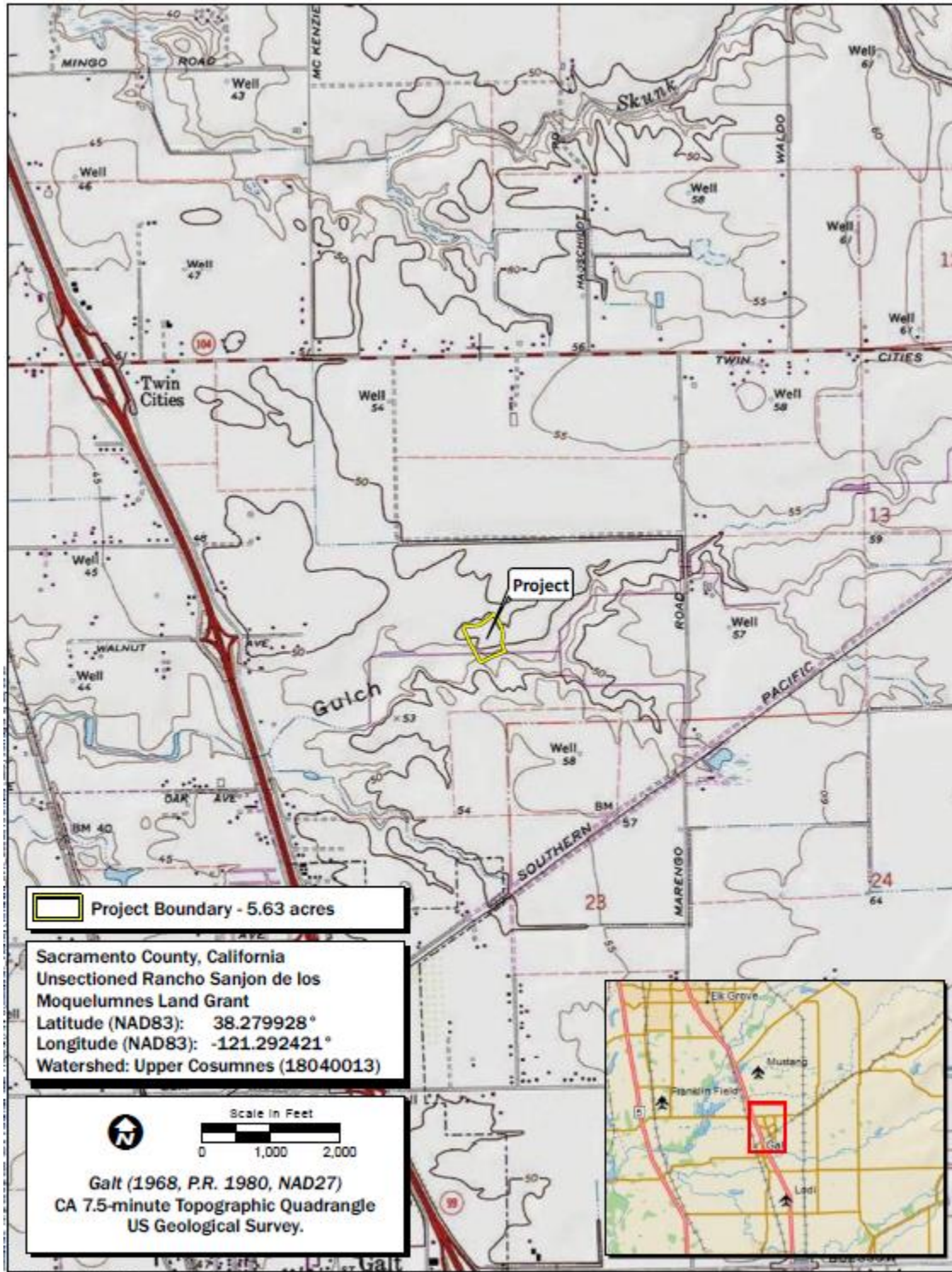
Mary Pakenham-Walsh (SPK-1995-00386)  
United States Army Corps of Engineers  
Sacramento District Office  
Regulatory Division  
SPKRegulatoryMailbox@usace.army.mil

Department of Fish and Wildlife, Region 2  
R2LSA@wildlife.ca.gov

Sam Ziegler  
United States Environmental Protection Agency  
Ziegler.Sam@epa.gov

CWA Section 401 WQC Program  
State Water Resources Control Board  
Stateboard401@waterboards.ca.gov

Kathleen Ports  
ECORP Consulting, Inc.  
kports@ecorpconsulting.com



Map Date: 2/15/2019  
Service Layer Credits: Copyright © 2018 Garmin  
Copyright © 2013 National Geographic Society, i-cubed



Figure 1. Project Location and Vicinity

2018-031 Veranda-Galt Project

Figure 1 – Project Location Map

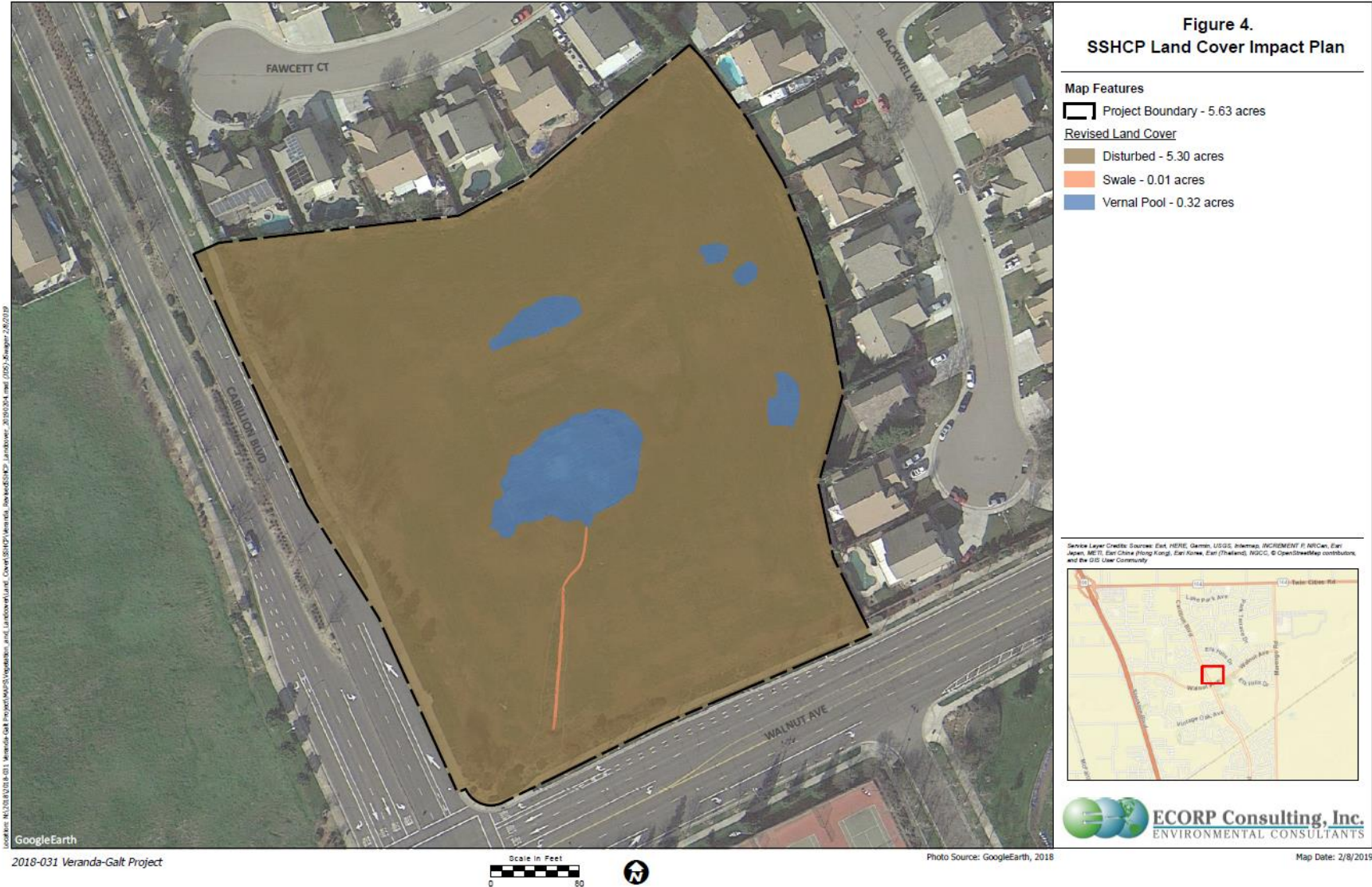


Figure 2 – Site Impact Map