
Central Valley Regional Water Quality Control Board

28 October 2024

Christoph Dobson
Sacramento Area Sewer District
10060 Goethe Rd
Sacramento, CA 95827
dobsonc@sacsewer.com

ORDER AMENDING CLEAN WATER ACT SECTION 401 TECHNICALLY CONDITIONED WATER QUALITY CERTIFICATION; SACRAMENTO REGIONAL COUNTY SANITATION DISTRICT, HARVEST WATER PIPELINE SYSTEM PROJECT (WDID#5A34CR00759-014A3), SACRAMENTO COUNTY

This Order responds to the 11 October 2024 request for an amendment of the Harvest Water Pipeline System Project (Project) Section 401 Water Quality Certification (WDID#5A34CR00759-014). The original Water Quality Certification (Certification) was issued on 12 November 2021. The requested amendment is hereby approved. The original Certification is therefore amended as described below. Please attach this document to the original Certification.

AMENDMENT:

Sacramento Area Sewer District (SacSewer) is requesting description changes at several on-farm connection assemblies (OFCA) sites and location changes of the trenchless pipeline installation under the Union Pacific Railroad (UPRR).

Expanded Locations

The trenchless crossing of the pipeline under the UPRR track at the intersection of Sims Road has been relocated. The updated alignment will cross under the UPRR track along an alignment to the north of Sims Road. This relocation of the trenchless crossing was necessary to avoid critical UPRR infrastructure adjacent to the road by a minimum distance required by UPRR for encroachment permitting. The project Action Area was extended north of Sims Road to capture the new pipeline alignment and additional work area.

On-farm connection assemblies (OFCA) are the point of connection between the Transmission and Distribution pipeline systems and the individual users' irrigation systems. These OFCA sites will be located on individual growers' properties and will supply Title 22 Tertiary Treated Recycled Water to agricultural users in southern Sacramento County. OFCA sites were selected on the property of growers who had expressed interest in participating in the Harvest Water program. Due to minor design

MARK BRADFORD, CHAIR | PATRICK PULUPA, ESQ., EXECUTIVE OFFICER

changes to meet grower or operational needs, several OFCA footprints have been expanded, or their configuration has changed, to accommodate the final engineering designs. All changes are expansions or reconfigurations from the previously designed OFCA sites: there are no new OFCA sites under review, only footprint modifications of previously designed sites. The only two exceptions are OFCA sites 12 and 18 which have moved to new locations; site 18 is within the same orchard but on the opposite side.

Changes to Impact Classification

Table 1 (below) presents the changes to temporary and permanent impacts associated with this permit amendment and does not present impacts disclosed in prior amendments and authorizations. Permanent impacts are related to the permanent conversion of agricultural land and low density development to graveled areas supporting new infrastructure and access for the OFCA sites. Temporary impacts will occur in areas of grading and construction equipment access during OFCA construction. Areas of temporary impacts will be restored to pre-activity conditions at the completion of the work, as described in the Harvest Water covered activity application materials from November 2021. From amendment 2 to amendment 3, the net total temp impacts are 3.247 less than amendment 2 and the Net total perm impacts are 0.649 more than amendment 2. The total perm and temp impacts added together are 3.001 acres less than amendment 2.

Table 1: Permit amendment #3 Net changes to Temporary and Permanent impacts to Land cover in the Harvest Water Action Area in SSHCP plan Area

SSHCP Land Cover Type	Temporary Impacts (acres)	Permanent Impacts (acres)
Freshwater Marsh	0.004	-
Seasonal Wetland	0.008	-0.002
Stream/ Creek	.005	0.003
Mixed Riparian Scrub	.090	0.008
Mixed Riparian Woodland	0.036	-
Blue Oak Woodland	-	-
Cropland	-0.206	-0.045
Disturbed (including Roadside Swale)	0.014	-0.129
High Density Development	-	-

Irrigated Pasture-Grassland	-0.251	0.615
Low Density Development	-2.700	-0.074
Major Road	-0.089	-0.058
Orchard	0.076	-0.027
Valley Grassland	-0.153	0.023
Vineyard	-0.081	-0.068
Net Total	-3.247	0.246
Total of Positive values	0.233	0.649

APPLICATION FEE RECEIVED:

No fee was required for this amendment. Total fees of \$2,066.00 for the original Certification were received on 25 August 2021. The fee amount was determined as required by California Code of Regulations, title 23, sections 3383(b)(3) and 2200(a)(3), as was calculated as category A - Fill & Excavation Discharges (fee code 84) with the dredge and fill fee calculator.

CENTRAL VALLEY REGIONAL WATER QUALITY CONTROL BOARD CONTACT:

Sara Gevorgyan, Environmental Scientist
11020 Sun Center Drive, Suite 200
Rancho Cordova, CA 95670-6114
Sara.Gevorgyan@waterboards.ca.gov
(916) 464-4710

PUBLIC NOTICE:

The Central Valley Water Board provided public notice of the application pursuant to California Code of Regulations, title 23, section 3858 from 18 October 2024 to 8 November 2024. The Central Valley Water Board did not receive any comments during the comment period.

WATER QUALITY CERTIFICATION:

I hereby issue an Order amending the existing Clean Water Act, Section 401 Technically Conditioned Water Quality Certification for the Harvest Water Pipeline System Project (WDID#5A34CR00759-014A3). All other conditions and provisions of the original Water Quality Certification and any previously approved amendments remain in full force and effect, except as modified based on the conditions of this Order.

Failure to comply with the terms and conditions of the original Water Quality Certification, previously approved amendments, or of this Order may result in suspension or revocation of the Water Quality Certification.

Original Signed by Anne Walters for:
Patrick Pulupa
Executive Officer

Enclosure: Project Information

Attachment: Figure 1 – Project Location Map
Figure 2- relocated trenchless crossing Map
Figure 3- New locations of OFCA sites 12 and 18 map

cc: [Via email only] (w/enclosure)

Kelley Herbel (SPK-2020-00707)
United States Army Corps of Engineers
Sacramento District Office
Regulatory Division
SPKRegulatoryMailbox@usace.army.mil
kelley.c.herbel@usace.army.mil

United States Environmental Protection Agency
R9CWA401@epa.gov

California Department of Fish and Wildlife, Region 2
R2LSA@wildlife.ca.gov

CWA Section 401 WQC Program
Division of Water Quality
State Water Resources Control Board
StateBoard401@waterboards.ca.gov

Richard McHenry
CA Sportfishing Protection Alliance
RMcHenry@calsport.org

Bryan Young
Sac Sewer
youngb@sacsewer.com

Rachel Brownsey
Environmental Science Associates
rbrownsey@esassoc.com

Figure 1 – Project Location Map

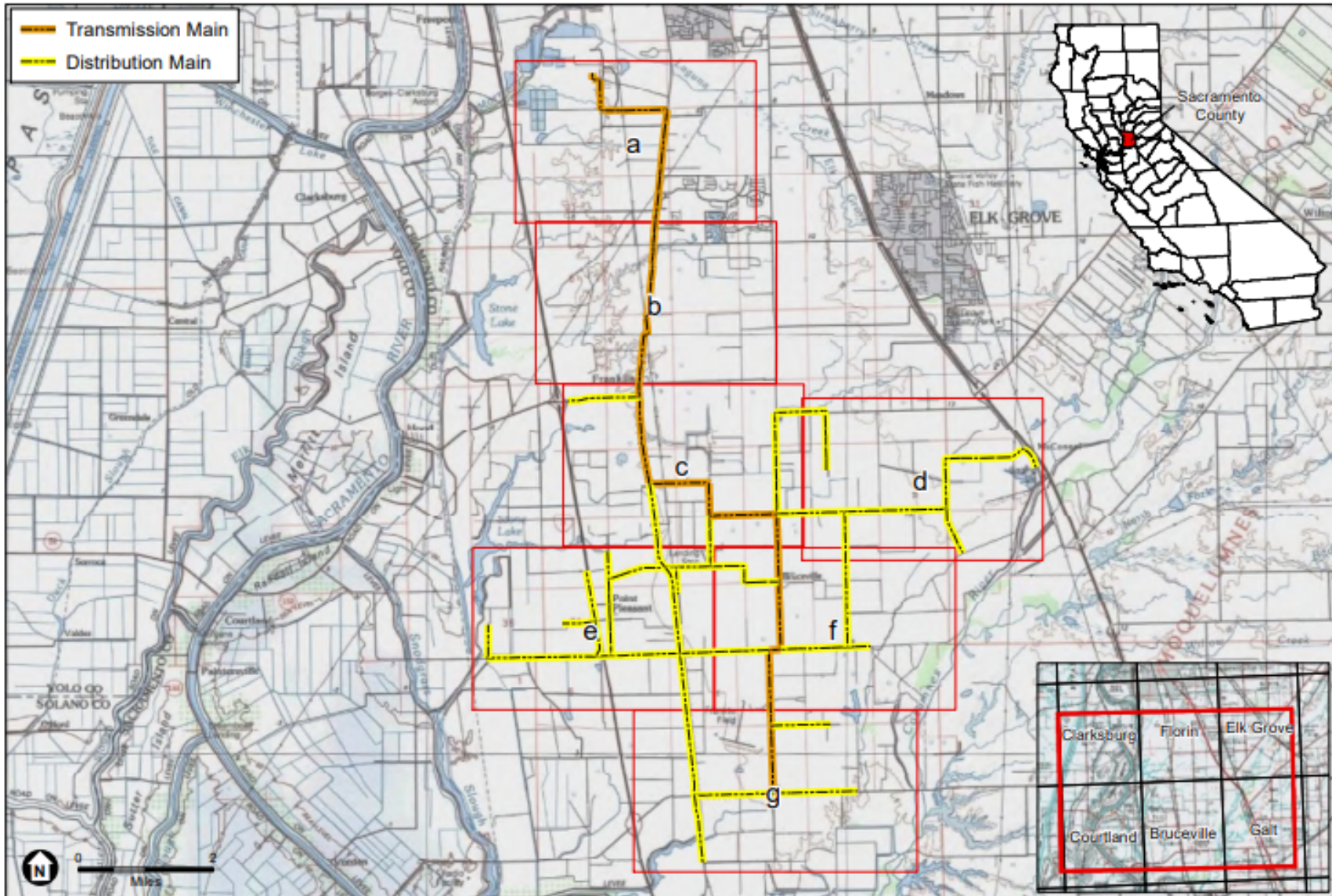


Figure 2- Relocated trenchless crossing Map

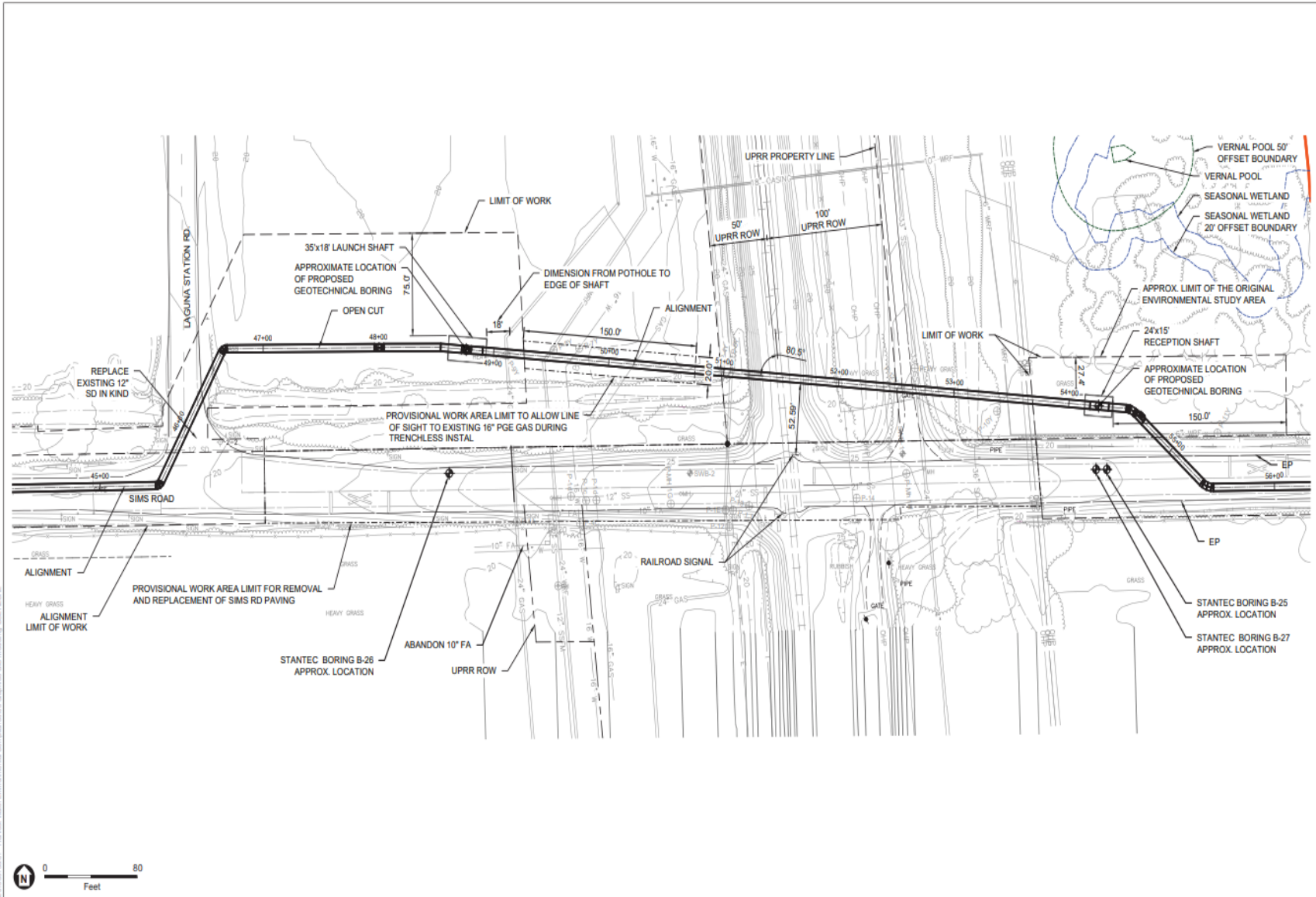


Figure 3- New Locations of OFCA Sites 12 and 18 Map

