



Central Valley Regional Water Quality Control Board

31 May 2024

Robert Pontureri
County of Yuba
915 8th Street, Suite 200
Marysville, CA 95901
RPontureri@co.yuba.ca.us

NOTICE OF APPLICABILITY (NOA); WAIVER OF WASTE DISCHARGE REQUIREMENTS FOR SPECIFIC TYPES OF DISCHARGE WITHIN THE CENTRAL VALLEY REGION, R5-2023-0061; COUNTY OF YUBA, STAR BEND BOAT RAMP AND RECREATION AREA PROJECT, YUBA COUNTY

On 2 May 2024, the County of Yuba (Discharger) submitted a Report of Waste Discharge (RWD) for coverage under the *Waiver of Waste Discharge Requirements (WDRs), Report of Waste Discharge (RWDs), and/or Water Recycling Requirements (WRRs) for Specific Types of Discharge within the Central Valley Region (Low Threat Waiver)*, Resolution R5-2023-0061. The submittal contains all the information required to evaluate the applicability of the Low Threat Waiver; therefore, the discharge qualifies for the category of disposal of dredge material to land and meets the conditions of the Waiver. The discharge is hereby covered under the Waiver and assigned enrollee number **R5-2023-0061-0021**. Please include this number in all correspondence related to this discharge. A copy of the [Low Threat Waiver](#) is enclosed and also available on the Central Valley Regional Water Quality Control Board's website.

(https://www.waterboards.ca.gov/centralvalley/board_decisions/adopted_orders/waivers/r5-2023-0061.pdf)

PROJECT DESCRIPTION

The goal of the project is to return the Yuba County Boat Ramp marina to its original design. Yuba County's access channel to the Star Bend Boat Ramp on the Feather River was significantly altered as the riverbed was raised with silt deposits due to the high-water events of 2019. The reach of the marina and the entrance to this channel, situated within a peninsula on the Feather River, requires immediate dredging.

Either hydraulic or mechanical methods will be employed to remove all material. It is anticipated the dredging will remove approximately 2,000 cubic yards of material. Maximum excavation is estimated to be approximately nine and a half feet deep with an average removal depth of four feet. Although routine dredging will not be conducted

MARK BRADFORD, CHAIR | PATRICK PULUPA, ESQ., EXECUTIVE OFFICER

each year, it is anticipated that dredging will be required at least every three years to achieve the long-term goals of the project. Approximately 15-20 working days will be in the water for dredging. No permanent impacts are anticipated.

BEST MANAGEMENT PRACTICES (BMPs)

Best management practices that will be employed to prevent excess erosion and prevent runoff from the emplaced sediments include:

- *Project Timeframe* – The project will be conducted during the period of July 1st and August 31st to avoid all impacts to federal special fish species. To avoid impacts to the giant garter snake, construction activities will take place after May 1.
- *Avoidance* – Use protective fencing around the Valley Elderberry Longhorn Beetle and around the perimeter of the project area, including riparian corridor.
- *Erosion and Sedimentation Control* – Silt wattles or silt fences will be used, in conjunction with erosion control mats when appropriate, to prevent erosion and sediment from entering Feather River.
- *Construction Monitoring* – A qualified biologist will be present and responsible for ensuring full avoidance of any special status species during any vegetation clearing in the riparian area.
- *Equipment Maintenance* – All refueling and equipment routine service will be conducted at least 150 feet away from waterways in designated refueling stations. In addition, routine equipment maintenance will occur at designated staging areas or commercial facilities. All project equipment will be inspected for leaks prior to being brought onsite and regularly throughout construction. Any equipment with signs of lubricant leaks will be immediately removed from the work area and will be inspected/repared in designated service area.
- *Dust Control* – Aggressive dust control measures will be taken, including the following steps:
 - Sprinkle water on all active construction areas at least twice daily and more often when conditions warrant.
 - Cover all trucks hauling soil, sand, and other loose materials or require all trucks to maintain at least two feet of freeboard.
 - Pave, apply water three times daily, or apply non-toxic soil stabilizers on all unpaved access roads, parking, areas, and staging areas at construction sites.
 - Hydroseed or apply non-toxic soil stabilizers to inactive construction areas.
 - Enclose, cover, water twice daily, or apply non-toxic soil binders to exposed soil stockpiles.
 - Limit traffic speed on unpaved roads to 5 mph.
 - Replant vegetation in disturbed areas as quickly as possible.
 - Limit the areas subject to excavation, grading, and other dust generating activities at any one time.
 - Cover and water stockpile.

SEDIMENT CHARACTERIZATION

The Discharger submitted a sediment characterization to demonstrate compliance with the Low Threat Waiver. Four sediment samples were taken from the Feather River and composited into one sample. Based on the sediment analysis results, the dredge material did not appear to contain constituents that are potentially hazardous or at concentrations that could impair beneficial uses of receiving waters.

APPROXIMATE TIMEFRAME FOR PROJECT IMPLEMENTATION

1 July through 31 August

PROJECT LOCATION

Address: 2034 Feather River Boulevard, Olivehurst, CA 95961

Latitude: 39.010713°, Longitude: -121.581471°

Assessor's Parcel Number: 016010017000, 016010019000, 016010031000,
016010030000, 016010046000

APPLICATION FEES RECEIVED

An application fee of \$2,985.00 was received on 13 May 2024. The fee amount was determined as required by California Code of Regulations, title 23, sections 3833(b)(3) and 2200(a)(3) and was calculated as Category B - Dredging Discharges (fee code 86) with the dredge and fill fee calculator.

FACILITY-SPECIFIC REQUIREMENTS

Please familiarize yourself with the contents of the Low Threat Waiver, including the Conditions of Discharge (Attachment A of the Low Threat Waiver). The discharge must be managed in accordance with the requirements contained in the Conditions of Discharge and with the information submitted in the RWD and this Notice of Applicability (NOA). The County of Yuba is responsible for compliance with the Waiver and must provide sufficient oversight to ensure compliance and prompt reporting of any non-compliance. Upon completion of the discharge activities and confirmation that all dewatering and hydrostatic water has percolated and/or evaporated, the Discharger shall notify the Central Valley Regional Water Quality Board to request termination of coverage under the Waiver.

DOCUMENT SUBMITTAL AND COMMUNICATION

Please convert all documents to a searchable Portable Document Format (pdf). All documents, including Monitoring Reports, written notifications, and documents submitted to comply with this NOA and the Low Threat Waiver, should be submitted to the Water Quality Certification and Dredging Unit, Attention: Jenna Yang at centralvalleysacramento@waterboards.ca.gov and Jenna.Yang@waterboards.ca.gov.

Please include the following information in the body of the email:

- Attention: Water Quality Certification and Dredging Unit
- Discharger: County of Yuba
- Project: Star Bend Boat Ramp and Recreation Area Project
- County: Yuba County
- CIWQS place ID: 894833

Please contact Jenna Yang at (916) 464-4764 or Jenna.Yang@waterboards.ca.gov if you have any questions regarding this Notice of Applicability or compliance with the Low Threat Waiver.

Original Signed by Anne Walters for:

Patrick Pulupa
Executive Officer

Enclosures (4): Low Threat Waiver, R5-2023-0061
 Enclosure A - Project Area Map
 Enclosure B – Disposal Site Location Map
 Enclosure C – Haul Route Map

cc: (via e-mail only)

Lillian Jepson (SPK-2008-00058)
United States Army Corps of Engineers
Sacramento District Office
Regulatory Division
Lillian.M.Jepson@usace.army.mil

Department of Fish and Wildlife, Region 2
R2LSA@wildlife.ca.gov

United States Environmental Protection Agency
R9CWA401@epa.gov

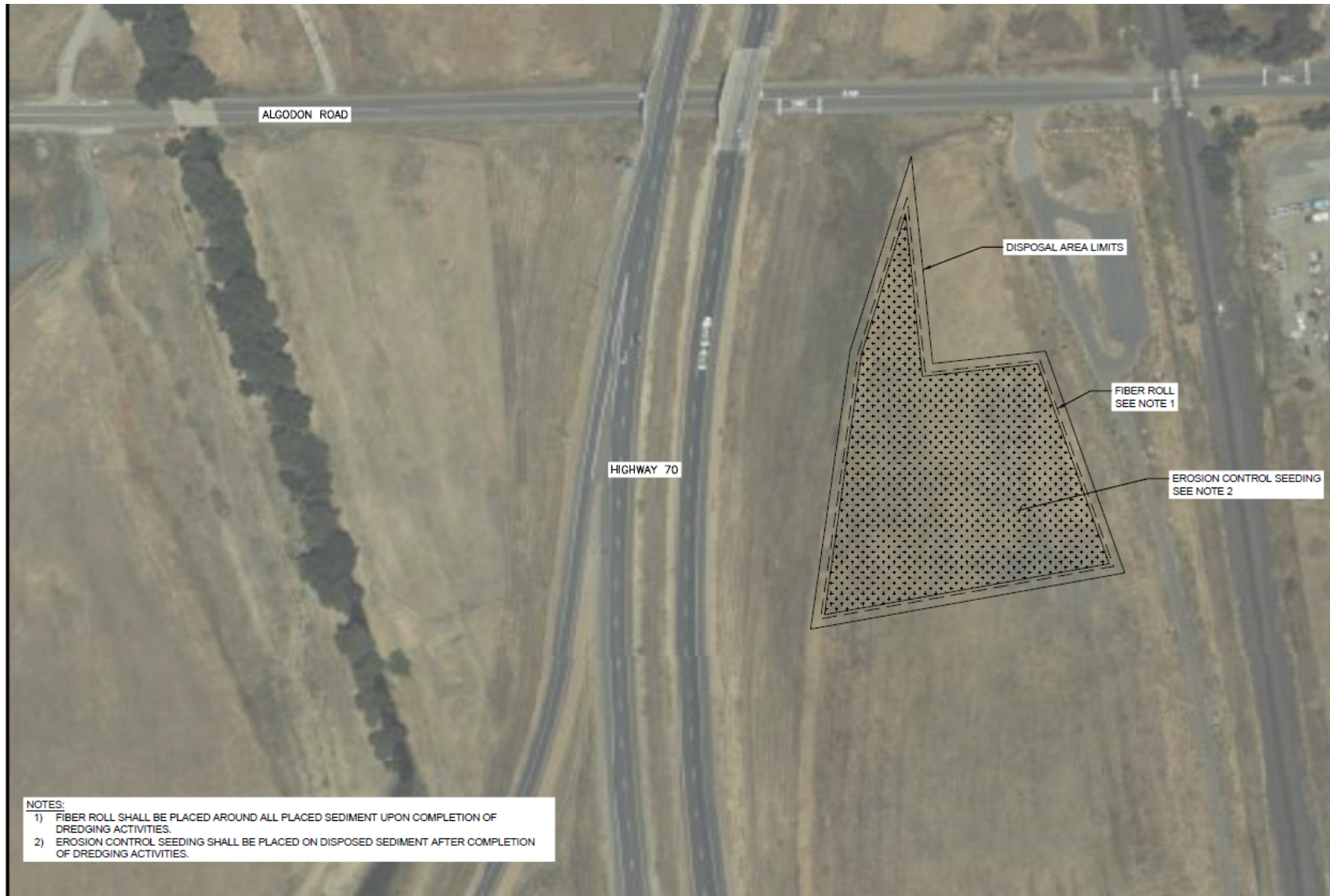
CWA Section 401 WQC Program
State Water Resources Control Board
Stateboard401@waterboards.ca.gov

ENCLOSURE A – PROJECT AREA MAP



Drone flight - Cox Planning Solutions, June 2023. Scale: 1:2,000, print size: 8.5x11

ENCLOSURE B – DISPOSAL SITE LOCATION MAP



NOTES:
1) FIBER ROLL SHALL BE PLACED AROUND ALL PLACED SEDIMENT UPON COMPLETION OF DREDGING ACTIVITIES.
2) EROSION CONTROL SEEDING SHALL BE PLACED ON DISPOSED SEDIMENT AFTER COMPLETION OF DREDGING ACTIVITIES.

ENCLOSURE C – HAUL ROUTE MAP

