
Central Valley Regional Water Quality Control Board

28 January 2022

Erica Jones
Pacific Gas and Electric Company
77 Beale Street
San Francisco, CA 95105

NOTICE OF APPLICABILITY FOR COVERAGE UNDER ORDER NO. 2004-0004-DWQ, STATEWIDE GENERAL WASTE DISCHARGE REQUIREMENTS FOR DREDGED OR FILL DISCHARGES TO WATERS DEEMED BY THE U.S. ARMY CORPS OF ENGINEERS TO BE OUTSIDE OF FEDERAL JURISDICTION, BELLOTA SUBSTATION 115 KV PAD EXPANSION PROJECT (WDID#5B39CR00358), SAN JOAQUIN COUNTY

On 26 August 2021, Pacific Gas and Electric Company (PG&E) submitted a Notice of Intent (NOI) to enroll under and comply with State Water Resources Control Board (State Water Board) Order No. 2004-0004-DWQ, Statewide General Waste Discharge Requirements for Dredged or Fill Discharges to Waters Deemed by the United States Army Corps of Engineers to be Outside of Federal Jurisdiction.

The Central Valley Regional Water Quality Control Board (Central Valley Water Board) staff has reviewed your enrollment materials and determined the Bellota Substation 115 kV Pad Expansion Project (Project) meets the requirements of, and is hereby enrolled under, Order No. 2004-0004-DWQ. You may proceed with your Project in accordance with the Order.

A copy of [Order 2004-0004-DWQ](https://www.waterboards.ca.gov/board_decisions/adopted_orders/water_quality/2004/wqo/wqo2004-0004.pdf) (https://www.waterboards.ca.gov/board_decisions/adopted_orders/water_quality/2004/wqo/wqo2004-0004.pdf) can be found on the State Water Resources Control Board's Adopted Orders webpage and is enclosed.

Please familiarize yourself with the requirements of Order No. 2004-0004-DWQ. You are responsible for complying with all applicable Order requirements. Failure to comply with Order No. 2004-0004-DWQ constitutes a violation of the California Water Code and may result in enforcement action or termination of enrollment under the Order.

PROJECT DESCRIPTION:

The 2.5-acre Project consists of expanding the Bellota Substation footprint for a new 115 kV pad and switchgear. Construction activities include site grading, installing a pre-cast concrete security wall, concrete foundation, and above ground equipment, and site cleanup and restoration.

Project elements that affect aquatic resources include the western substation expansion and the addition of 112 cubic yards of fill material. The Project will permanently impact 0.021 acre of wetland habitat.

PROJECT LOCATION:

The Project is located at 24300 E. Flood Road in Linden. The approximate center of the Project area is located at latitude 38.015134°N and longitude 121.019682°W.

PROJECT SCHEDULE:

The Project is anticipated to occur between 1 April 2022 through 28 February 2023 and will require up to 11 months to complete.

APPLICATION FEE RECEIVED:

A fee of \$2,066.00 was received on 26 August 2021. The fee amount was determined as required by California Code of Regulations, title 23, sections 3833(b)(3) and 2200(a)(3) and was calculated as category E - Low Impact Discharges (fee code 87) with the dredge and fill fee calculator.

MITIGATION AND MINIMIZATION MEASURES:

PG&E is required to provide compensatory mitigation for the authorized impact to 0.021 acre of wetland habitat by purchasing 0.02 Aquatic Resource Credits in the San Joaquin River Aquatic Resource Watershed Service Area. Required credits shall be purchased from the National Fish and Wildlife Foundation's Sacramento District California In-Lieu Fee Program and submitted to the Central Valley Water Board prior to commencement of construction activities.

TERMINATION OF COVERAGE:

Upon completion of the Project, you shall submit a complete Notice of Termination (NOT) requesting to be un-enrolled under Order No. 2004-0004-DWQ. Attachment 2 to the Order contains the NOT form.

If you have questions concerning this matter, please contact Shawn Agarwal by phone at (916) 464-4849 or by email at Shawn.Agarwal@waterboards.ca.gov.

Original Signed By James Marshall for:

Patrick Pulupa
Executive Officer

Enclosure: State Water Resources Control Board Water Quality Order No. 2004-0004-DWQ

Attachment: Figure 1 – Project Vicinity Map
Figure 2 – Project Impacts Area Map

cc: Distribution List, page 3

DISTRIBUTION LIST
[Via Email Only]

Department of Fish and Wildlife, Region 2
R2LSA@wildlife.ca.gov

United States Environmental Protection Agency
R9CWA401@epa.gov

CWA Section 401 WQC Program
State Water Resources Control Board
Stateboard401@waterboards.ca.gov

Bill Jennings
CA Sportfishing Protection Alliance
DeltaKeep@me.com

Sam Danner
Land Planner
Pacific Gas and Electric Company
sadm@pge.com

Sarah Cortez
Stantec Consulting
sarah.cortez@stantec.com

Stephanie Tadlock
Unit Supervisor
Central Valley Regional Water Quality Control Board
Stephanie.Tadlock@waterboards.ca.gov

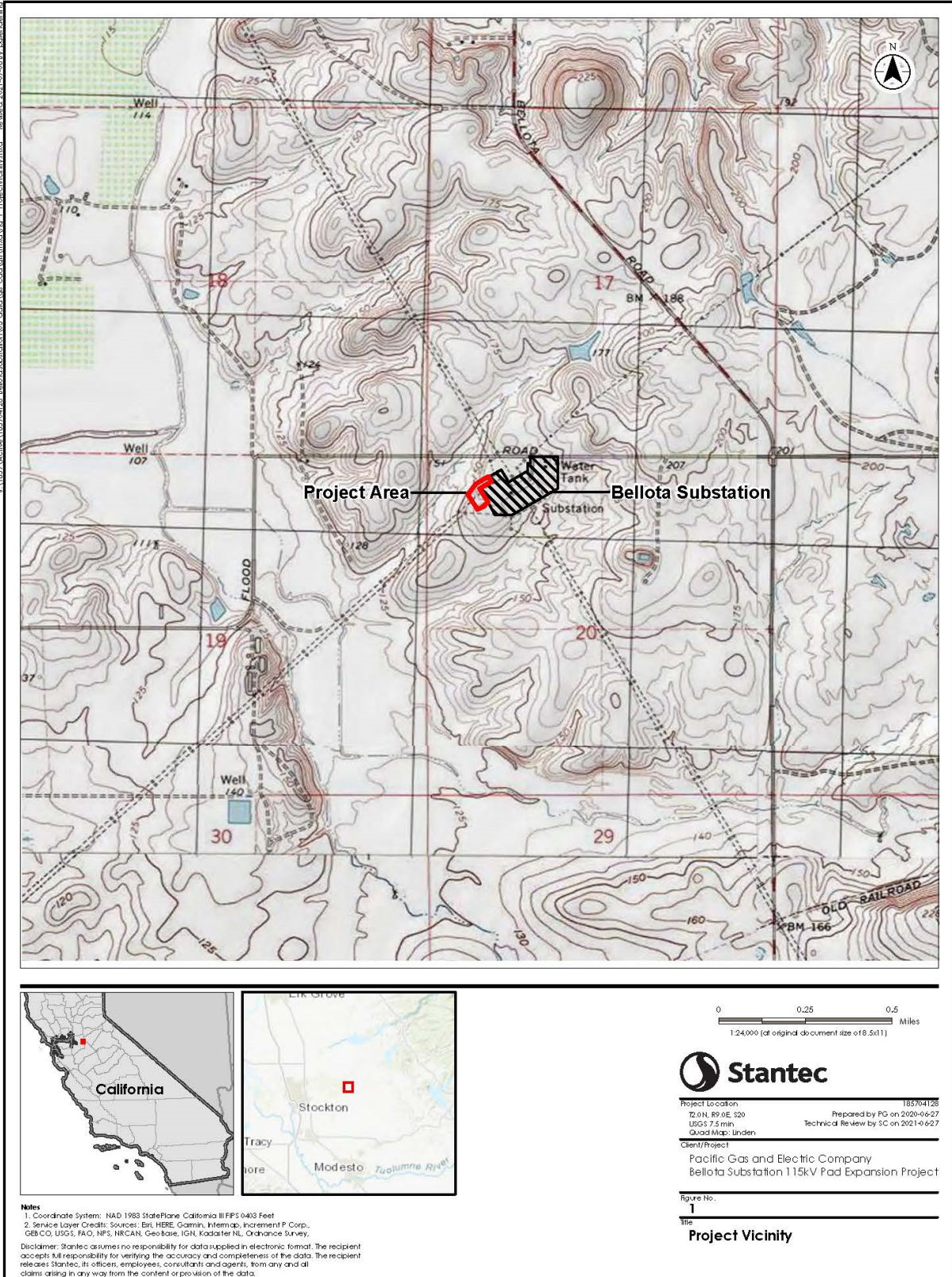
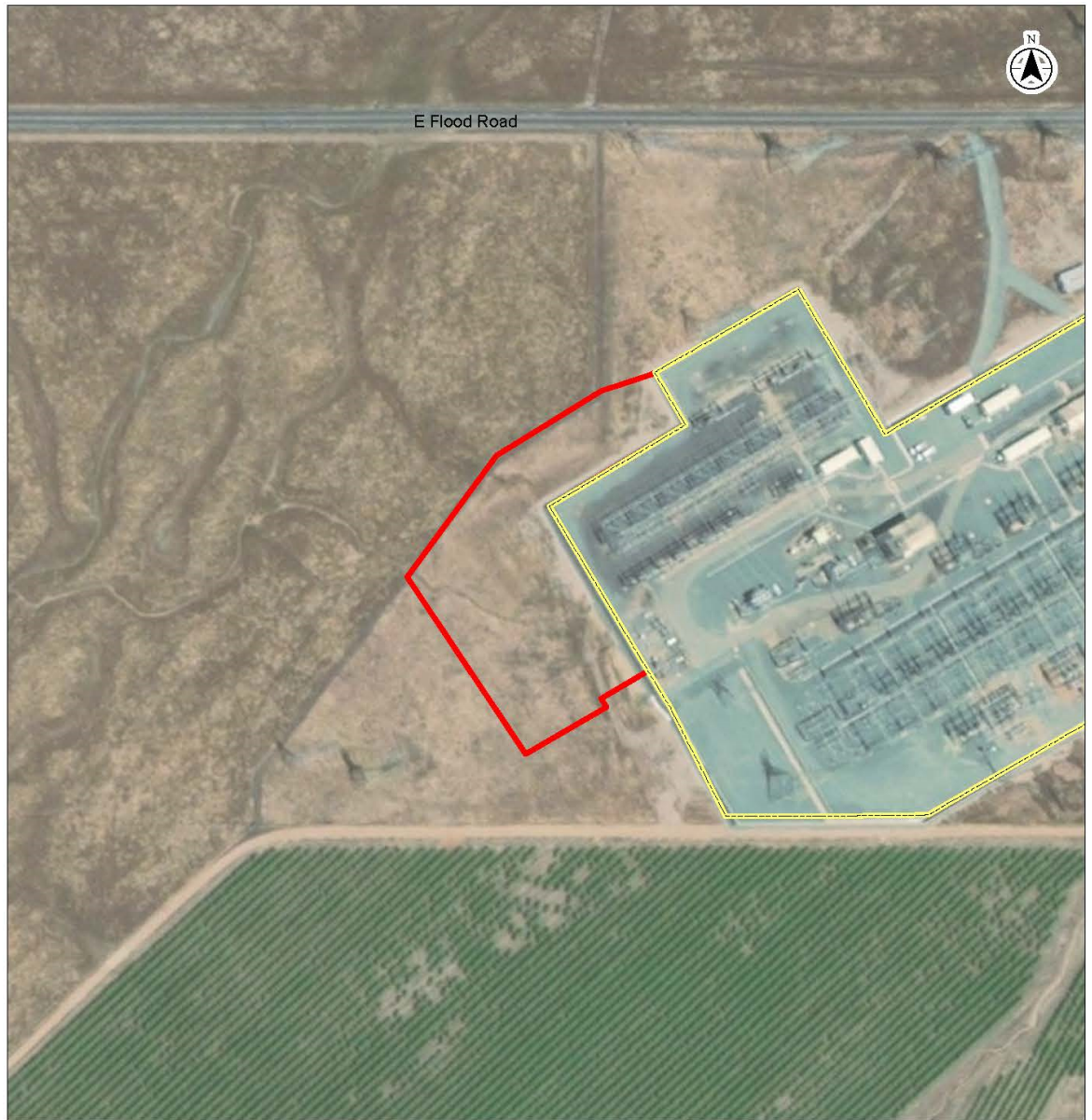


Figure 1 – Project Vicinity Map



Substation Expansion Area
 Existing Bellota Substation

0 100 200
 Feet
 1:2,400 (at original document size of 8.5x11)



Project Location: 185704128
 TZ: 01N, R9 0E, S20 Prepared by PG on 2020-06-27
 USGS 7.5 min Technical Review by SC on 2021-06-27
 Quad Map: Linden

Client/Project:
 Pacific Gas and Electric Company
 Bellota Substation 115kV Pad Expansion Project

Figure No.:
 2

Title:
 Project Components

Notes
 1. Coordinate System: NAD 1983 StatePlane California III FIPS 4003 Feet
 2. Service Layer Credits: Source: Esri, Maxar, GeoEye, Earthstar Geographics, CNES/Airbus DS, USDA, USGS, AeroGRID, IGN, and the GIS User Community
 Disclaimer: Stantec assumes no responsibility for data supplied in electronic format. The recipient accepts full responsibility for verifying the accuracy and completeness of the data. The recipient releases Stantec, its officers, employees, consultants and agents, from any and all claims arising in any way from the content or provision of the data.

Figure 2 - Project Impacts Area Map