



# California Regional Water Quality Control Board Central Valley Region

Katherine Hart, Chair

11020 Sun Center Drive, #200, Rancho Cordova, California 95670-6114  
(916) 464-3291 • FAX (916) 464-4645  
<http://www.waterboards.ca.gov/centralvalley>



Edmund G. Brown Jr.  
Governor

Linda S. Adams  
Acting Secretary for  
Environmental Protection

1 July 2011

Mr. Carl Mosher, Deputy Director  
Sacramento County Airport System  
6900 Airport Boulevard  
Sacramento, CA 95837

**CERTIFIED MAIL**  
**7010 1670 0002 0652 5815**

**NOTICE OF APPLICABILITY, WATER QUALITY ORDER NO. 2003-0003-DWQ, GENERAL WASTE DISCHARGE REQUIREMENTS FOR DISCHARGES TO LAND WITH A LOW THREAT TO WATER QUALITY, SACRAMENTO COUNTY AIRPORT SYSTEMS, SACRAMENTO INTERNATIONAL AIRPORT - MEISTER WAY SEWER CONNECTION, SACRAMENTO COUNTY, ORDER NO. 2003-0003-DWQ-0018**

On 24 June 2011, the Sacramento County Airport System (hereafter referred to as Discharger) submitted a Notice of Intent (NOI) to comply with the terms of *Statewide General Waste Discharge Requirements (WDRs) for Discharges to Land with a Low Threat to Water Quality*, Water Quality Order (WQO) No. 2003-0003-DWQ (General Order). The General Order includes land application of groundwater generated from dewatering operations during construction as a low threat category. Based on the information provided in the NOI and additional information submitted on 28 June 2011, the land application of dewatered groundwater satisfies the general and specific conditions of the General Order. Therefore, this letter serves as formal notice that the WQO is applicable to the site and discharge. You are hereby assigned WQO No. 2003-0003-DWQ-0018.

A copy of the General Order is enclosed for the Discharger; otherwise it may be viewed on the State Water Board's website at:

[http://www.waterboards.ca.gov/board\\_decisions/adopted\\_orders/water\\_quality/2003/wqo/wqo2003-0003.pdf](http://www.waterboards.ca.gov/board_decisions/adopted_orders/water_quality/2003/wqo/wqo2003-0003.pdf)

You should familiarize yourself with the contents of the General Order. The discharge must be managed in accordance with the requirements contained in the General Order, the information submitted in the NOI and additional information, and the requirements contained in this Notice of Applicability (NOA).

## PROJECT DESCRIPTION

The Discharger is constructing a sanitary sewer line connection to the County sewer system at the Sacramento International Airport. The project consists of the installation of approximately 4,200 linear feet of 18-inch and 15-inch diameter sewer pipe and 13 new manholes. The project site is located north of Interstate 5, along Meister Way and a small portion of Powerline Road. A dewatering system that includes a series of 50 dewatering wells with land application to an adjacent property will enable trench excavation for construction of the sewer connection. Dewatering wells will be installed in four phases, with

**California Environmental Protection Agency**



the last phase to be completed by 1 September 2011. The sewer connection project has an anticipated completion date of 1 October 2011. Completion of this project will result in the discontinued use of the existing oxidation ponds that have been in operation at the airport since 1967.

## **DISCHARGE DESCRIPTION**

The construction dewatering area and land application area (LAA) locations are presented on Attachment A, which forms part of this Notice by reference. The LAA is approximately 120 acres and located immediately south of the excavation activities. The Discharger owns the land. The LAA is bermed to contain all applied water. Dewatering activities will occur continuously during the trench excavation activities.

### Dewatered Groundwater Quality

Previous shallow groundwater testing at the airport determined the following groundwater quality.

<u>Analyte</u>	<u>Concentration (mg/L)</u>
Dissolved Solids	1,410
Chloride	350
Sulfate	290
Total Hardness	850

Although groundwater quality appears to be poor with respect to salinity, the dewatered groundwater will be pumped from the shallow aquifer and will be land applied where it will percolate to the same shallow aquifer. Therefore, groundwater degradation is not anticipated to occur as a result of the activity.

## **MONITORING AND REPORTING**

The Discharger shall comply with Monitoring and Reporting Program (MRP) No. R5-2011-0812, which is attached hereto and part of this NOA. This site-specific MRP replaces the requirements of the MRP contained in the General Order. The MRP is effective upon issuance of this NOA. Please reference your unique Order No. 2003-0003-DWQ-0018 and MRP No. R5-2011-0812 when submitting your monitoring reports.

## **GENERAL INFORMATION AND REQUIREMENTS**

The Discharger shall comply with WQO No. 2003-0003-DWQ. The discharge volume shall not exceed the capacity of the disposal area and shall be controlled to ensure continuous compliance with the requirements of the General Order.

This project is statutorily exempt from the provisions of the California Environmental Quality Act, based on the Notice of Exemption issued by the County of Sacramento Department of Environmental Review and Assessment dated 3 May 2010.

The construction and destruction of any dewatering well shall be in accordance with the standards adopted by the Sacramento County Environmental Management Department. Any

dewatering well to be destructed or abandoned shall be performed under the oversight of the County. The Discharger shall submit copies of signed construction and abandonment well permits to the Central Valley Water Board by **30 December 2011**.

Please review this Notice of Applicability carefully to ensure that it completely and accurately reflects the proposed discharge. If the discharge violates the terms or conditions of the General Order or this NOA, the Central Valley Water Board may take enforcement action, including assessment of administrative civil liability. If the method or location of extracted groundwater disposal changes from that described in the NOI and additional information, you must submit a new NOI.

Sacramento County Airport System will generate the waste subject to the terms and conditions of WQO No. 2003-0003-DWQ and will maintain exclusive control over the discharge. The Sacramento County Airport System is responsible for compliance with WQO No. 2003-0003-DWQ, this NOA, and the attached MRP. Failure to comply with the requirements in the documents could result in an enforcement action as authorized by provisions of the California Water Code. Discharge of wastes other than those described in the NOI is prohibited.

The required annual fee specified in the annual billing from the State Water Board shall be paid until this NOA is officially terminated. You must notify this office in writing if the discharge regulated by this Order ceases so that we may terminate coverage and avoid unnecessary billing.

All monitoring reports, submittals, discharge and violation notifications and questions regarding compliance with the General Order shall be directed to Guy Childs at (916) 464-4648 or [gchilds@waterboards.ca.gov](mailto:gchilds@waterboards.ca.gov). Questions regarding application for a revised NOA or individual WDRs may be directed to Lani Andam, at (916) 464-4723 or [landam@waterboards.ca.gov](mailto:landam@waterboards.ca.gov).

Original signed by Frederick Moss

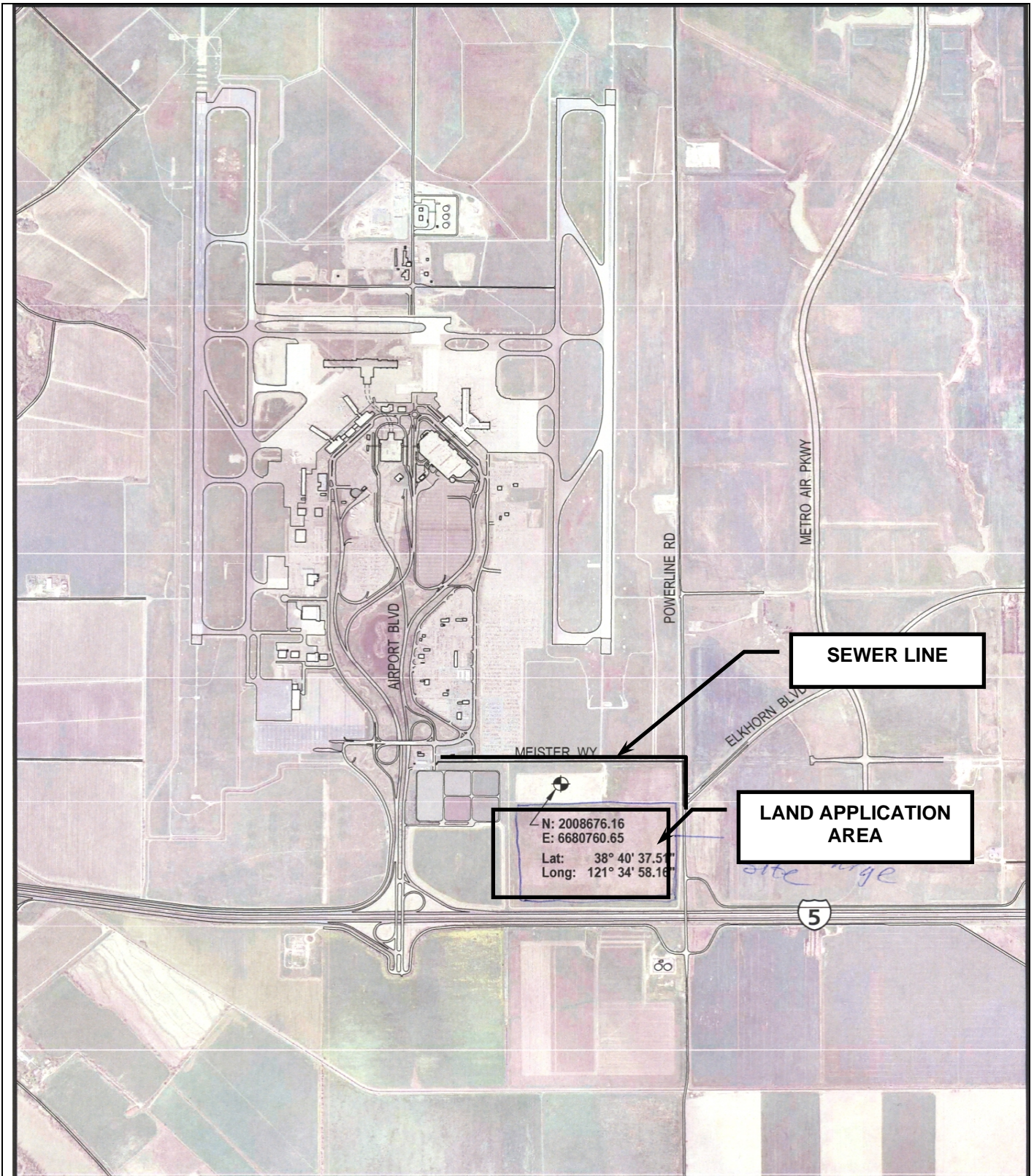
PAMELA C. CREEDON  
Executive Officer

Attachments: A – Location and Site Map  
Monitoring and Reporting Program No. R5-2011-0812

Enclosure: State Water Board Water Quality Order No. 2003-0003-DWQ

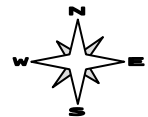
cc w/att only: Mr. Gordon Innes, State Water Board, Division of Water Quality, Sacramento  
Sacramento County Department of Environmental Health, Sacramento  
Mr. Jeff Cornette, Sacramento County Airport System, Sacramento  
Mr. Curtis Winchester, Teichert Construction, Davis





Drawing Reference:  
Sacramento County  
Airport System  
June 23, 2011

**DEWATERING LOCATION PLAN**  
SACRAMENTO INTERNATIONAL AIRPORT  
SACRAMENTO COUNTY



Not to Scale