

## Central Valley Regional Water Quality Control Board

16 January 2019

Albert Boyce  
Pillsbury Road Partners, LLC  
PO Box 871  
Manteca, CA 95336

**CERTIFIED MAIL**  
91 7199 9991 7039 7041 3190

### NOTICE OF APPLICABILITY

**WATER QUALITY ORDER 2003-0003-DWQ  
STATEWIDE WASTE DISCHARGE REQUIREMENTS FOR DISCHARGES TO LAND WITH  
A LOW THREAT TO WATER QUALITY  
PILLSBURY ROAD PARTNERS, LLC,  
CONSTRUCTION DEWATERING FOR SEWER PIPELINE INSTALLATION,  
SAN JOAQUIN COUNTY**

On 9 January 2019, Knife River Construction, on behave of Pillsbury Road Partners, LLC., submitted a Notice of Intent (NOI) to obtain coverage under Water Quality Order 2003-0003-DWQ, *Statewide General Waste Discharge Requirements for Discharges to Land with a Low Threat to Water Quality* (hereafter General Order) for construction dewatering. The submittal contains all the information required to evaluate applicability of the General Order; therefore, the NOI is considered complete. Based on the information provided in the NOI, the discharge meets the conditions of the General Order. The discharge is hereby covered under State Water Resources Control Board General Order 2003-0003-DWQ-0194. Please include this number on all correspondence related to this discharge.

#### PROJECT LOCATION AND DESCRIPTION

The project is located near the intersection of Pillsbury Road and Heartland Drive in Manteca, San Joaquin County. The project consists of installing temporary dewatering wells to facilitate the installation of an eight-inch sewer pipeline for a private development. Groundwater is estimated to be approximately 20 feet below ground surface and no known sources of groundwater pollution have been identified in the area. An estimated 1.5 million gallons per day will be discharged to a bermed percolation basin. The project is scheduled to begin mid-February 2019 and end in mid-March 2019.

The Water Quality Control Plan for the Sacramento River and San Joaquin River Basins, Fourth Edition, revised October 2011 (hereafter Basin Plan), designates beneficial uses, establishes water quality objectives, contains implementation plans and policies for protecting waters of the basin, and incorporates by reference plans and policies adopted by the State Water Resources Control Board. Pursuant to §13263(a) of the California Water Code (CWC), waste discharge requirements must implement the Basin Plan.

## **FACILITY-SPECIFIC REQUIREMENTS**

The General Order and this Notice of Applicability regulates construction dewatering for the Pillsbury Road Partners sewer pipeline installation project.

1. Water generated during construction dewatering shall be disposed of as described in the Notice of Intent and in accordance with the requirements contained in the General Order.
2. Construction dewatering discharge at a location or in a manner different from that described in the Notice of Intent or this Notice of Applicability is prohibited.
3. All technical reports required herein that involve evaluation, or other work requiring interpretation and proper application of engineering or geologic sciences, shall be prepared by or under the direction of persons registered to practice in California pursuant to California Business and Professions Code, section 6735, 7835, and 7835.1. As required by these laws, completed technical reports must bear the signature(s) and seal(s) of the registered professional(s) in a manner such that all work can be clearly attributed to the professional responsible for the work.
4. Monitoring results shall be submitted on a semi-annual basis in accordance the General Order's Monitoring and Reporting Program. For the January through June reporting period, the monitoring report is due August 15. For the July through December reporting period, the monitoring report is due February 15.
5. The Discharger shall submit the required annual fee (as specified in the annual billing issued by the State Water Resources Control Board) until the Notice of Applicability is officially terminated.
6. Failure to abide by the conditions of the General Order, including its monitoring and reporting requirements, and this letter authorizing applicability could result in enforcement actions, as authorized by provisions of the California Water Code.

## **DOCUMENT SUBMITTALS**

All monitoring reports and other correspondence should be converted to searchable Portable Document Format (PDF) and submitted electronically. Documents that are less than 50 MB should be emailed to:

[centralvalleysacramento@waterboards.ca.gov](mailto:centralvalleysacramento@waterboards.ca.gov).

To ensure that your submittal is routed to the appropriate staff person, the following information should be included in the body of the email or any documentation submitted to the mailing address for this office:

Facility Name: Pillsbury Road Partners, LLC, Construction Dewatering for Sewer Pipeline Installation, San Joaquin County		
Program: Non-15 Compliance	Order: R5-2003-0003-DWQ-0194	CIWQS Place ID: 855297

Documents that are 50 MB or larger should be transferred to a CD, DVD, or flash drive and mailed to:

Central Valley Regional Water Quality Control Board  
ECM Mailroom  
11020 Sun Center Drive, Suite 200  
Rancho Cordova, CA 95670

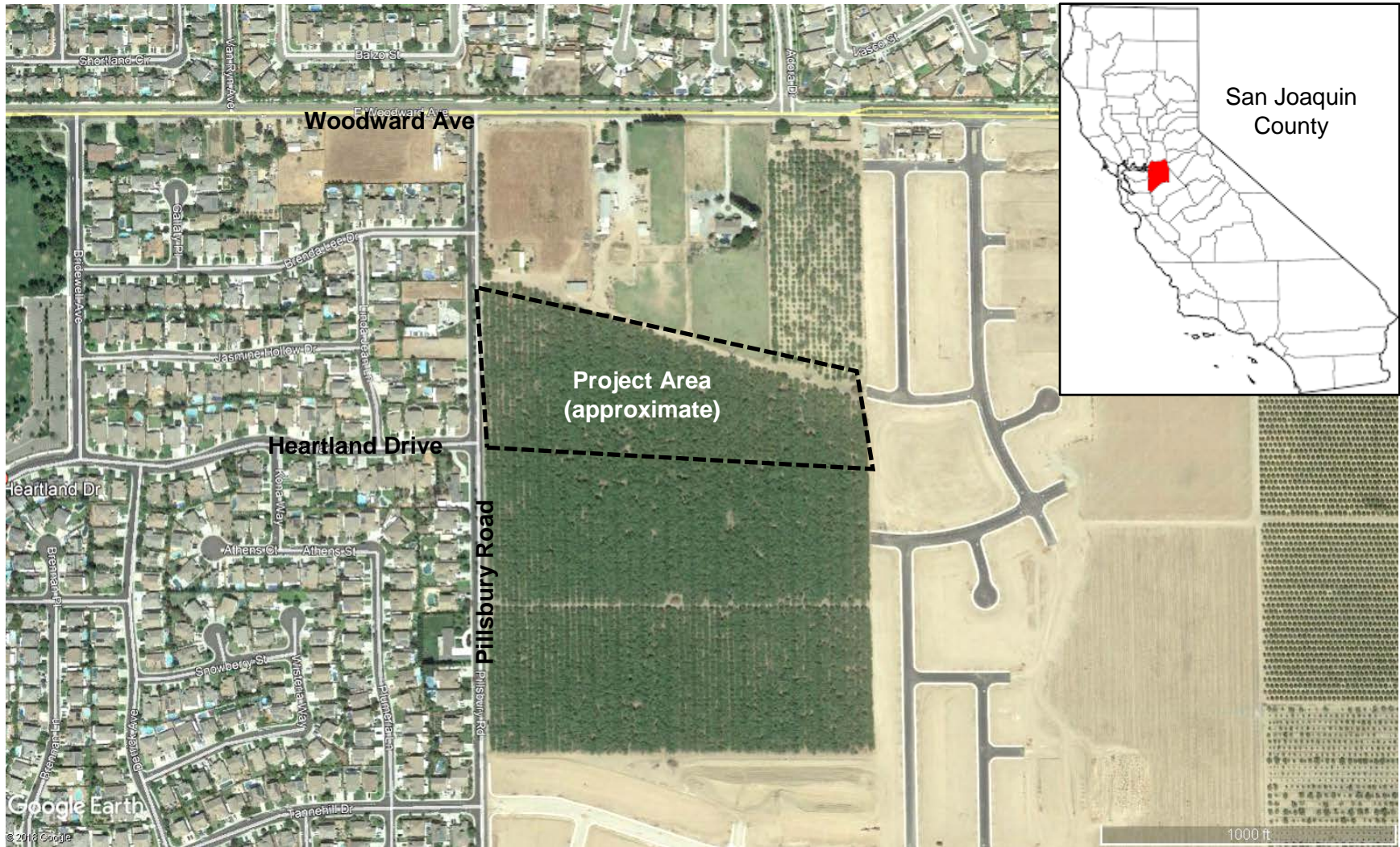
Now that the NOA has been issued, the Board's Compliance and Enforcement section will take over management of your case. Brendan Kenny is your new point of contact for any questions about the Order. In addition, all monitoring and technical reports should be submitted to him. The enclosed transmittal sheet shall be included with each monitoring report. If you find it necessary to make a change to your permitted operations, Brendan will direct you to the appropriate Permitting staff. You may contact Brendan at (916) 464-4635 or at [bkenny@waterboards.ca.gov](mailto:bkenny@waterboards.ca.gov).

*--original signed by Andrew Altevogt for--*

PATRICK PULUPA  
Executive Officer

Enclosures: Water Quality Order No. 2003-0003-DWQ  
Monitoring Report Submittal Transmittal Form

cc w/o: Tim O'Brien, State Water Resources Control Board, Sacramento  
San Joaquin County Environmental Health Department, Stockton



**PILLSBURY ROAD PARTNERS  
CONSTRUCTION DEWATERING FOR SEWER  
PIPELINE INSTALLATION**

**SAN JOAQUIN COUNTY**

Figure Reference: Google Earth, 2018