

Central Valley Regional Water Quality Control Board

8 October 2024

KB HOME North Bay, LLC
Attn: Matt Collins
4830 Business Center Drive, Suite 150
Fairfield, CA 94534

CERTIFIED MAIL
9589 0710 5270 0591 2560 81

NOTICE OF APPLICABILITY
WATER QUALITY ORDER 2003-0003-DWQ
STATEWIDE WASTE DISCHARGE REQUIREMENTS FOR DISCHARGES TO LAND
WITH A LOW THREAT TO WATER QUALITY
KB HOME NORTH BAY, LLC,
GRIFFEN PARK NEIGHBORHOOD D/UNIT 10 DEWATERING PROJECT
SAN JOAQUIN COUNTY

On 10 September 2024, Stevens, Ferrone, & Bailey Engineering Company, Inc., (consultant) submitted a Notice of Intent (NOI) on behalf of KB HOME North Bay, LLC. (Discharger) to obtain coverage under Water Quality Order 2003-0003-DWQ, Statewide General Waste Discharge Requirements for Discharges to Land with a Low Threat to Water Quality (hereafter General Order) for construction dewatering. The September 2024 submittal contained all the information required to evaluate applicability of the General Order; therefore, the NOI is considered complete. Based on the information provided in the NOI, the discharge meets the conditions of the General Order. The discharge is hereby covered under State Water Resources Control Board (State Water Board) General Order and issued enrollee number 2003-0003-DWQ-0250. Please include this number on all correspondence related to this discharge.

PROJECT LOCATION AND DESCRIPTION

The project consists of construction dewatering for the development of a residential subdivision for the installation of underground utilities. The project is located at the northwest corner of South Main Street and Sedan Avenue in the City of Manteca in San Joaquin County, and occupies approximately 25 acres.

As part of underground utility installation for the subdivision, temporary construction dewatering will be required as groundwater is expected to be encountered at approximately 13 feet below ground surface (bgs). Groundwater will be pumped from a series of dewatering wells throughout the project. Dewatering will be used to extract groundwater.

Depending on actual site conditions encountered, pumps in each well are expected to produce between 25 to 50 gallons per minute (gpm) during the initial drawdown period for a total expected rate of approximately 1.62 to 3.24 million gallons per day (mgd). Pumping rates will likely decrease by half during “steady state” pumping. Dewatering is expected to begin in October 2024 and be ongoing for approximately four months through January 2025.

Groundwater will be conveyed to an on-site detention/infiltration basin located within the Unit 10 area. The basin has an approximate area of 59,339 square feet and an approximate storage of 3.74 acre-feet. Dewatered groundwater will be allowed to settle and infiltrate in the basin. Water may be pumped from the basin into water trucks and applied within the site as dust control and during grading activities for the project.

There are currently no groundwater remediation projects within a one mile of the project location.

The Water Quality Control Plan for the Sacramento River and San Joaquin River Basins, Fifth Edition, revised May 2018 (hereafter Basin Plan), designates beneficial uses, establishes water quality objectives, contains implementation plans and policies for protecting waters of the basin, and incorporates by reference plans and policies adopted by the State Water Board. Pursuant to §13263(a) of the California Water Code, waste discharge requirements must implement the Basin Plan.

FACILITY-SPECIFIC REQUIREMENTS

The General Order and this NOA regulate groundwater dewatering for the Griffin Park Neighborhood D/Unit 10 project.

1. Water generated during construction dewatering shall be disposed of as described in the Notice of Intent, the Discharger’s Monitoring Plan (DMP), and in accordance with the requirements contained in the General Order.
2. Construction dewatering discharge at a location or in a manner different from that described in the NOI or this NOA is prohibited
3. All technical reports required herein that involve evaluation, or other work requiring interpretation and proper application of engineering or geologic sciences, shall be prepared by or under the direction of persons registered to practice in California pursuant to California Business and Professions Code, section 6735, 7835, and 7835.1. As required by these laws, completed technical reports must bear the signature(s) and seal(s) of the registered professional(s) in a manner such that all work can be clearly attributed to the professional responsible for the work.
4. For construction dewatering, monitoring results shall be submitted on a semi-annual basis in accordance the General Order’s Monitoring and Reporting Program and the Discharger’s DMP, which was included in the original NOI. Semi-annual monitoring reports shall be submitted to the Central Valley Water Board on the **15th day of the second month following monitoring** (i.e. the

January through June report is due August 15 and the July through December report is due February 15). Monitoring shall include the approximate volume of discharge at each discharge location and date of each discharge (see the MRP included in the Order).

5. The Discharger shall submit the required annual fee (as specified in the annual billing issued by the State Water Board) until the NOA is officially terminated.
6. Failure to abide by the conditions of the General Order, including its monitoring and reporting requirements, and this letter authorizing applicability could result in enforcement actions, as authorized by provisions of the California Water Code

DOCUMENT SUBMITTALS

All monitoring reports and other correspondence should be converted to searchable Portable Document Format (PDF) and submitted electronically. Documents that are less than 50 MB should be emailed to: centralvalleysacramento@waterboards.ca.gov.

To ensure that your submittal is routed to the appropriate staff person, the following information should be included in the body of the email or any documentation submitted to the mailing address for this office:

Facility Name: Griffin Park Neighborhood D/Unit 10
Program: Non-15 Compliance
Order: WQO 2003-0003-DWQ-0250
CIWQS Place ID: 896579

Documents that are 50 MB or larger should be transferred to a CD, DVD, or flash drive and mailed to:

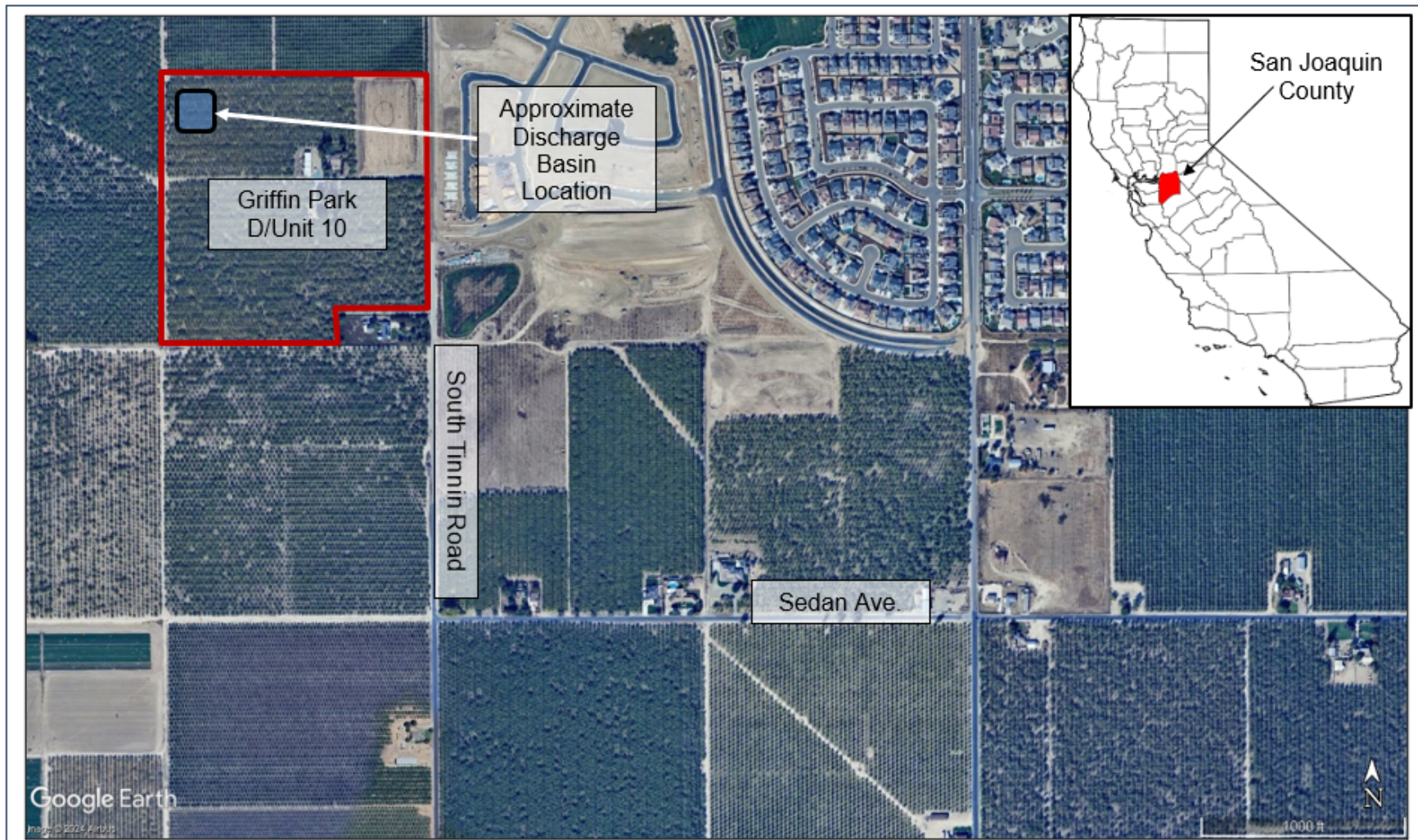
Central Valley Regional Water Quality Control Board
ECM Mailroom
11020 Sun Center Drive, Suite 200
Rancho Cordova, CA 95670

Now that the revised NOA has been issued, the Board's Compliance and Enforcement section will take over management of your case. Brendan Kenny is your point of contact for any questions about enrollment under the Order. All monitoring and technical reports should be submitted to him. The enclosed transmittal sheet shall be included with each monitoring report. If you find it necessary to make a change to your permitted operations, Brendan will direct you to the appropriate Permitting staff. You may contact Brendan at (916) 464-4635 or at brendan.kenny@waterboards.ca.gov.

for Patrick Pulupa
Executive Officer

enclosures: Water Quality Order No. 2003-0003-DWQ
Monitoring and Reporting Program
Monitoring Report Submittal Transmittal Form
Standard Provisions and Reporting Requirements

cc w/o encl: San Joaquin County Environmental Health Department, Stockton



SITE LOCATION AND FEATURES MAP

Griffin Park Neighborhood D/Unit 10
San Joaquin County