

CALIFORNIA REGIONAL WATER QUALITY CONTROL BOARD
CENTRAL VALLEY REGION

ORDER NO. 76-60

REVISION AND AMENDMENT OF THE WATER QUALITY CONTROL PLAN,
SAN JOAQUIN RIVER BASIN (5C)
BY THE ADDITION OF A PROHIBITION OF WASTE DISCHARGE
FROM LEACHING AND PERCOLATION SYSTEMS WITHIN
SIX-MILE VILLAGE
CALAVERAS COUNTY

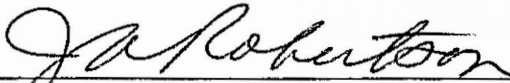
The California Regional Water Quality Control Board, Central Valley Region (hereafter Board), finds that:

1. The Board on 25 July 1975 adopted a Water Quality Control Plan for the San Joaquin River Basin 5C.
2. The Plan contains areas where the discharge of waste from leaching and percolation systems is prohibited.
3. Six-Mile Village is located on Highway 4, about two miles east of Angels Camp with surface drainage to Six-Mile Creek which is tributary to Angels Creek and thence to the Stanislaus River.
4. The beneficial uses of these waters include: agricultural supply; recreation; esthetic enjoyment; domestic use; and preservation and enhancement of fish, wildlife, and other aquatic resources.
5. A sanitary survey conducted in 1974 showed that 75% of the individual waste disposal systems were failing due to poor soil conditions.
6. The area of concern is that entire area delineated on the attached map.
7. Continued installation and usage of leaching or percolation systems will increase the threat to public health and will further unreasonably impair water quality.
8. On 27 February 1976, in the Auditorium, County Center Three Court, Modesto, after due public notice, the Board conducted a public hearing at which evidence was received concerning the discharge of wastes from individual sewage disposal systems.

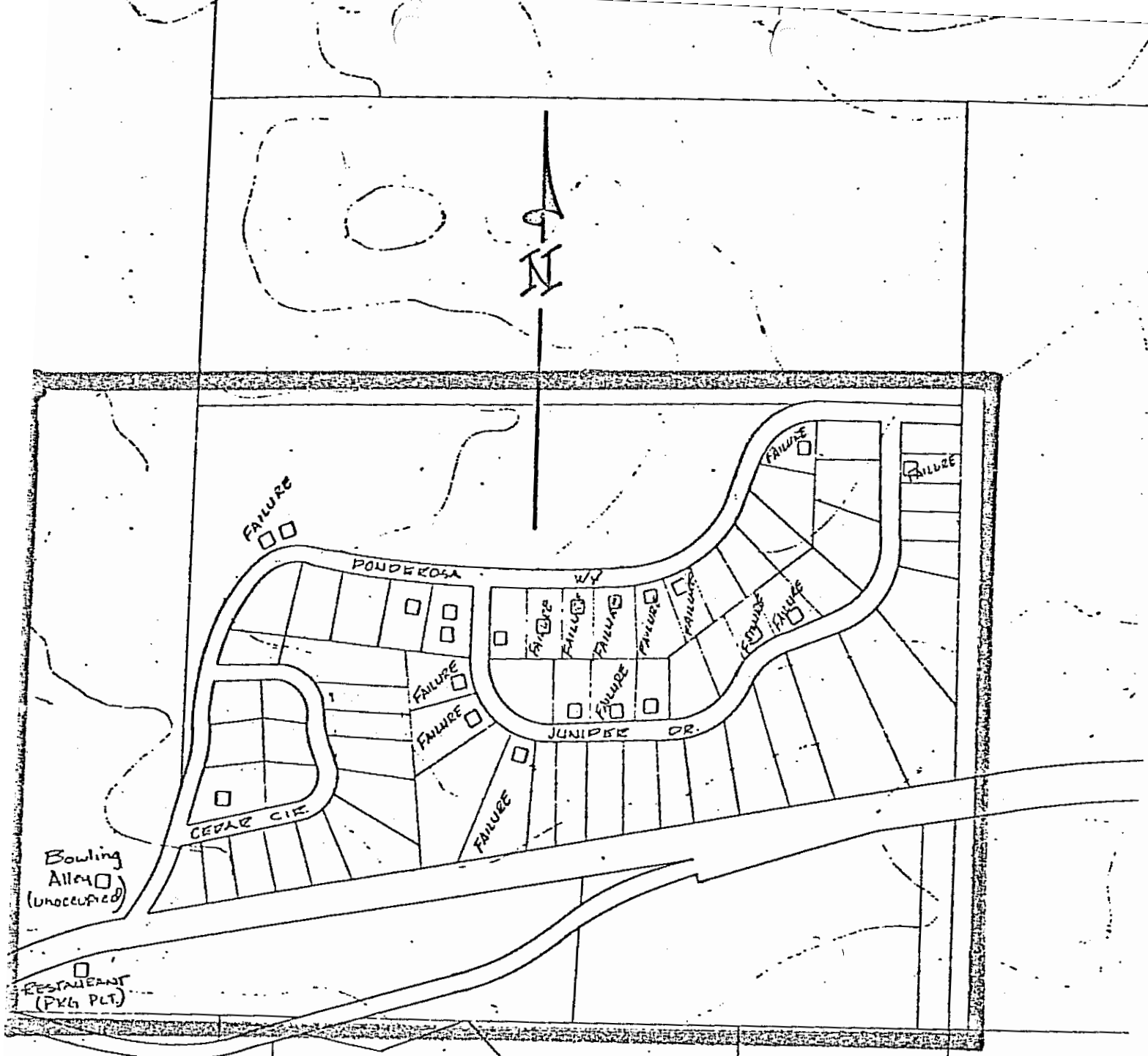
IT IS HEREBY ORDERED, that:

1. The discharge of wastewaters within the Six-Mile Village area, as delineated on the attached map, from leaching or percolation systems installed after approval of this amendment by the State Water Resources Control Board is prohibited. An exemption to this prohibition may be granted by the Executive Officer after presentation by the proposed discharger of geologic and hydrologic evidence that leaching system disposal will not, individually or collectively, result in pollution or nuisance.
2. The discharge of wastewaters within the Six-Mile Village area from leaching or percolation systems is prohibited after 1 January 1980. An exemption to this prohibition may be granted whenever the Board finds that the continued operation of individual sewage disposal systems in a particular area will not, individually or collectively, directly or indirectly, adversely affect water quality.
3. Chapter V of the Water Quality Control Plan is revised by the addition of this prohibition, upon approval of the State Water Resources Control Board.

I, JAMES A. ROBERTSON, Executive Officer, do hereby certify the foregoing is a full, true, and correct copy of an order adopted by the California Regional Water Quality Control Board, Central Valley Region, on 27 February 1976.



JAMES A. ROBERTSON, Executive Officer



Six Mile Village

RESIDENCES AND SEPTIC TANK FAILURES

CLAYTON COUNTY WATER DISTRICT
2 APRIL 1975

□ HOMES

SCALE - 1 INCH = 400 FEET