

---

## Central Valley Regional Water Quality Control Board

12 July 2017

Michael Barkin, CFO  
Kirkwood Mountain Resort  
204 Kingsbury Grade, Suite 201  
Stateline, NV 89449

**CERTIFIED MAIL**  
**91 7199 9991 7035 8420 2388**

### **NOTICE OF APPLICABILITY**

#### **WAIVER OF REPORT OF WASTE DISCHARGE AND WASTE DISCHARGE REQUIREMENTS FOR SPECIFIC TYPES OF DISCHARGE WITHIN THE CENTRAL VALLEY REGION, KIRKWOOD MOUNTAIN RESORT, CLEAN WATER DISCHARGE, ALPINE COUNTY**

On 21 June 2017, Kirkwood Mountain Resort submitted a Notice of Intent (NOI) to obtain coverage under *Waiver of Report of Waste Discharge and Waste Discharge Requirements for Specific Types of Discharge within the Central Valley Region, Order R5-2013-0145* (the Waiver). Additional information was received on 28 June 2017. The submittal contains all the information required to evaluate the applicability of the Waiver; therefore, the NOI is considered complete and the discharge meets the conditions of the Waiver. The discharge is hereby covered under the Waiver Order R5-2013-0145-0075. Please include this number on all correspondence related to this discharge.

#### **PROJECT LOCATION AND DESCRIPTION**

Kirkwood Mountain Resort (the discharger) is a ski lodge and outdoor recreation facility located at 1501 Kirkwood Meadows Drive in Kirkwood, California. The facility is approximately 20 miles south of Lake Tahoe off of Highway 88 in Alpine County, as shown on Attachment A.

The discharger plans to conduct maintenance on their snowmaking equipment. The equipment will be charged with source water from Caples Lake (permitted separately) and drained to test valves distributed through a sprinkler irrigation system on the ski slopes. The discharge will occur intermittently (10 to 12 times) between 1 July 2017 and 1 November 2017. An estimated 200,000 gallons total may be discharged and should not exceed a couple of hours of discharge at a time. The discharge area is 36 acres in size and consists of ski slopes and vegetation. The discharged water is expected to percolate rapidly and will not be allowed to run off-site.

The Water Quality Control Plan for the Sacramento River and San Joaquin River Basins, Fourth Edition, revised October 2011 (hereafter Basin Plan), designates beneficial uses, establishes water quality objectives, contains implementation plans and policies for protecting waters of the basin, and incorporates by reference plans and policies adopted by the State Water Resources Control Board. Pursuant to §13263(a) of the California Water Code (CWC), waste discharge requirements must implement the Basin Plan.

## FACILITY-SPECIFIC REQUIREMENTS

Please review the attached waiver documents and ensure that the discharge complies with the Conditions of Discharge contained in Attachment A of the Waiver. Kirkwood Mountain Resort is responsible for compliance with the waiver and must provide sufficient oversight to ensure compliance and prompt reporting of any noncompliance.

## DOCUMENT SUBMITTALS

All monitoring reports and other correspondence should be converted to searchable Portable Document Format (PDF) and submitted electronically. Documents that are less than 50 MB should be emailed to:

centralvalleysacramento@waterboards.ca.gov.

To ensure that your submittal is routed to the appropriate staff person, the following information should be included in the body of the email or any documentation submitted to the mailing address for this office:

Facility Name: Kirkwood Mountain Resort, Alpine County		
Program: Non-15 Compliance	Order: R5-2013-0145-0075	CIWQS Place ID: 825320

Documents that are 50 MB or larger should be transferred to a CD, DVD, or flash drive and mailed to:

Central Valley Regional Water Quality Control Board  
ECM Mailroom  
11020 Sun Center Drive, Suite 200  
Rancho Cordova, CA 95670

Now that the NOA has been issued, the Board's Compliance and Enforcement section will take over management of your case. Kenny Croyle is your new point of contact for any questions about the Order. In addition, all monitoring and technical reports should be submitted to him. The enclosed transmittal sheet shall be included with each monitoring report. If you find it necessary to make a change to your permitted operations, Kenny will direct you to the appropriate Permitting staff. You may contact Guy at (916) 464-4676 or at [kcroyle@waterboards.ca.gov](mailto:kcroyle@waterboards.ca.gov).

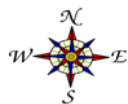
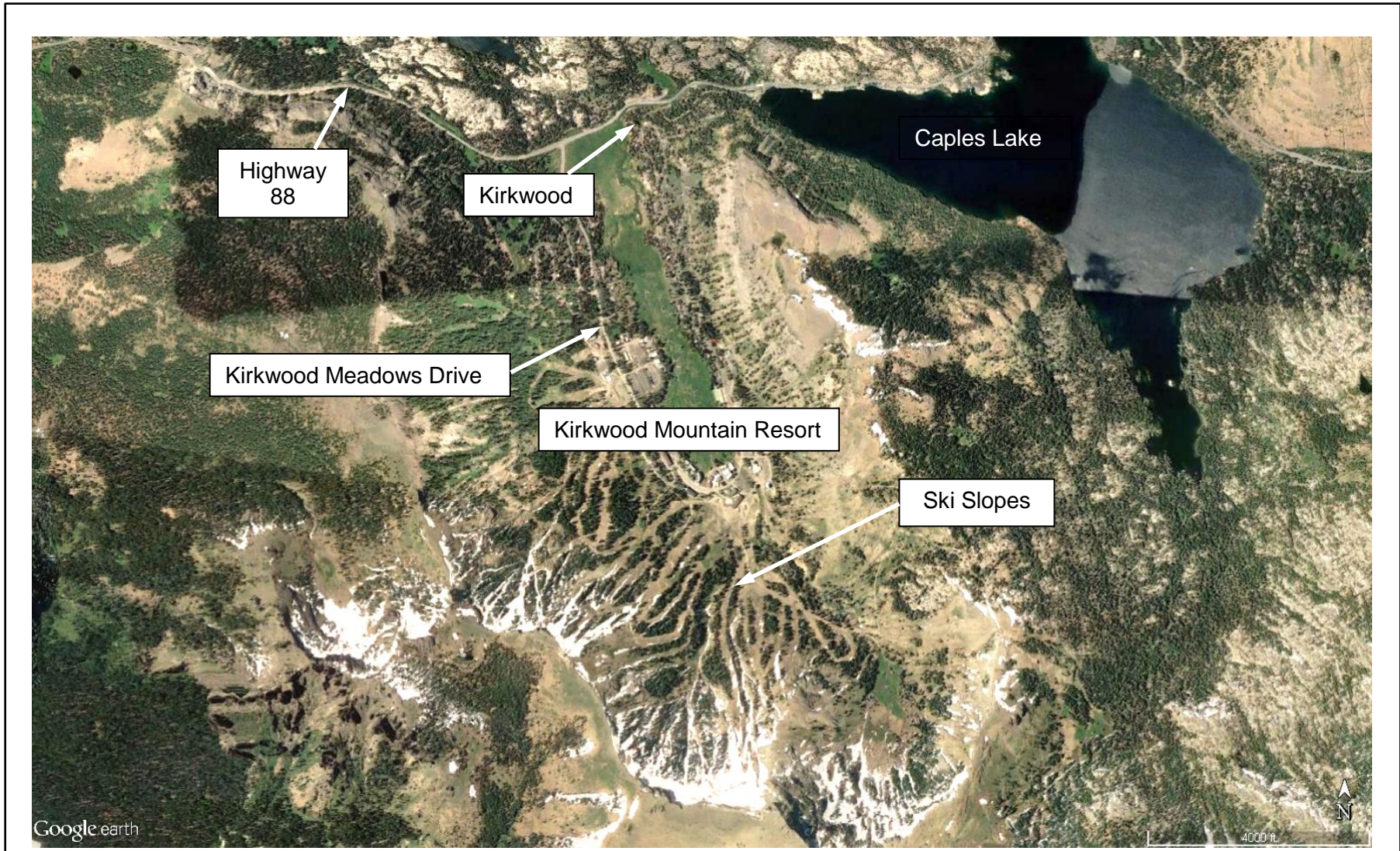
-- original signed by Andrew Altevogt for --

PAMELA C. CREEDON  
Executive Officer

Enclosures: Waiver R5-2013-0145  
Attachment A – Site Location Map

cc w/o enc: Dennis Lampson, Alpine County Environmental Health Department, Markleeville





~ 4,000 feet

**SITE LOCATION MAP**

**KIRKWOOD MOUNTAIN RESORT  
CLEAN WATER DISCHARGE  
ALPINE COUNTY**