



GAVIN NEWSOM
GOVERNOR



JARED BLUMENFELD
SECRETARY FOR
ENVIRONMENTAL PROTECTION

CENTRAL VALLEY REGIONAL WATER QUALITY CONTROL BOARD

8 April 2020

Kacy Kimball
Department of Water Resources
1416 Ninth Street, Room 425
Sacramento, CA 95814

CERTIFIED MAIL
7019-2280-0001-9244-0023

NOTICE OF APPLICABILITY

WAIVER OF REPORT OF WASTE DISCHARGE AND WASTE DISCHARGE REQUIREMENTS FOR SPECIFIC TYPES OF DISCHARGE WITHIN THE CENTRAL VALLEY REGION, DEPARTMENT OF WATER RESOURCES FLOOD MAINTENANCE OFFICE, TISDALE BYPASS SPOIL SITE SUTTER COUNTY

On 19 February 2020, the Department of Water Resources (DWR) submitted a Notice of Intent to obtain coverage under the Waiver of Report of Waste Discharge and Waste Discharge Requirements for Specific Types of Discharge within the Central Valley Region, Order R5-2018-0085 (the Waiver). The submittal contains all the information required to evaluate the applicability of the Waiver; therefore, the NOI is considered complete and the discharge meets the conditions of the Waiver. The discharge is hereby covered under the Waiver, Order R5-2018-0085-0038. Please include this number on all correspondence related to this discharge.

Project Location and Description

The Tisdale Bypass Sediment Removal 2020 Project (the Project) is located in Sutter County, approximately 6.3 miles downstream of the community of Grimes and 10 miles upstream of the Yolo County/Colusa County line, as shown on Attachment A. The Project is scheduled to begin in the summer of 2020. DWR will remove approximately 400,000 cubic yards of sediment from a four-mile-long segment of the Tisdale Bypass, which connects the Sacramento River to the Sutter Bypass. Sediment has accumulated in the Tisdale Bypass since the previous sediment removal project in 2007 when approximately 1.7 million cubic yards of sediment were removed. Sediment removal is necessary to return this portion of the Sacramento River Flood Control Project area to its design capacity to minimize potential flooding in the Sutter and Colusa County area.

The excavated sediment will be placed at one upland disposal site consisting of approximately 60 acres located northwest of the Bypass's north levee and Reclamation

Road intersection on Sacramento and San Joaquin Drainage District's (SSJDD's) parcels (Assessor's Parcel Numbers 21-280-007 and 21-280-008). The material will be placed to a thickness of 7 to 8 feet and graded to a height equal to the top of the existing grade of the disposal site. A cross section of the disposal site was included in the NOI. Construction measures will be taken to minimize erosion and runoff at the spoil areas. Best management practices will include some or all of the following:

- a. Soil compaction.
- b. Revegetation of slopes.
- c. Grading for drainage away from the disposal site.
- d. Installation of silt fencing or straw bales.
- e. maintaining an exclusion zone around agricultural ditches and surface water.
- f. sloping the sediment pile at a ratio of three horizontal to one vertical (3H:1V).

The sediment to be removed and soil from the proposed disposal area were sampled and analyzed for metals, organochlorine and organophosphorus pesticides, and pH. All analytical results for the sediment were less than the U.S. EPA Regional Screening Level for the Protection of Groundwater criteria, with the exception thallium. Thallium was detected greater than the screening criteria in one of eight composite samples. Thallium was not detected in any other sample. Samples from the disposal area did contain constituent concentrations greater than screening levels. The one thallium result does not appear to be a concern because the single detection of thallium when compared to the volume of sediment to be removed will not pose a threat to groundwater quality.

The Water Quality Control Plan for the Sacramento River and San Joaquin River Basins, Fifth Edition, revised May 2018, establishes water quality objectives, contains implementation plans and policies for protecting waters of the basin, and incorporates by reference plans and policies adopted by the State Water Resources Control Board. Pursuant to §13263(a) of the California Water Code (CWC), waste discharge requirements must implement the Basin Plan.

Facility Specific Requirements

Please review the attached waiver documents and ensure that the discharge complies with the Conditions of Discharge contained in Attachment A of the waiver. DWR is responsible for compliance with the waiver and must provide sufficient oversight to ensure compliance and prompt reporting of any noncompliance.

Document Submittals

All monitoring reports and other correspondence should be converted to searchable Portable Document Format (PDF) and submitted electronically. Documents that are less than 50 MB should be emailed to: centralvalleysacramento@waterboards.ca.gov.

To ensure that your submittal is routed to the appropriate staff person, the following information must be included in the body of the email or any documentation submitted to the mailing address for this office:

Facility Name: Tisdale Bypass Spoil Site
Program: Non-15 Compliance
Order: R5-2018-0085-0038
CIWQS Place ID: 655085

Documents that are 50 MB or larger must be transferred to a CD, DVD, or flash drive and mailed to:

Central Valley Regional Water Quality Control Board
ECM Mailroom
110020 Sun Center Drive, Suite 200
Rancho Cordova, CA 95670

Now that the NOA has been issued, the Board's Compliance and Enforcement section will take over management of your case. Brendan Kenny is your point of contact for any questions about the Waiver. If you find it necessary to make a change to your permitted operations, Brendan will direct you to the appropriate Permitting staff. You may contact Brendan at (916) 464-4635 or bkenny@waterboards.ca.gov.

Patrick Pulupa, Executive Officer

Enclosures:

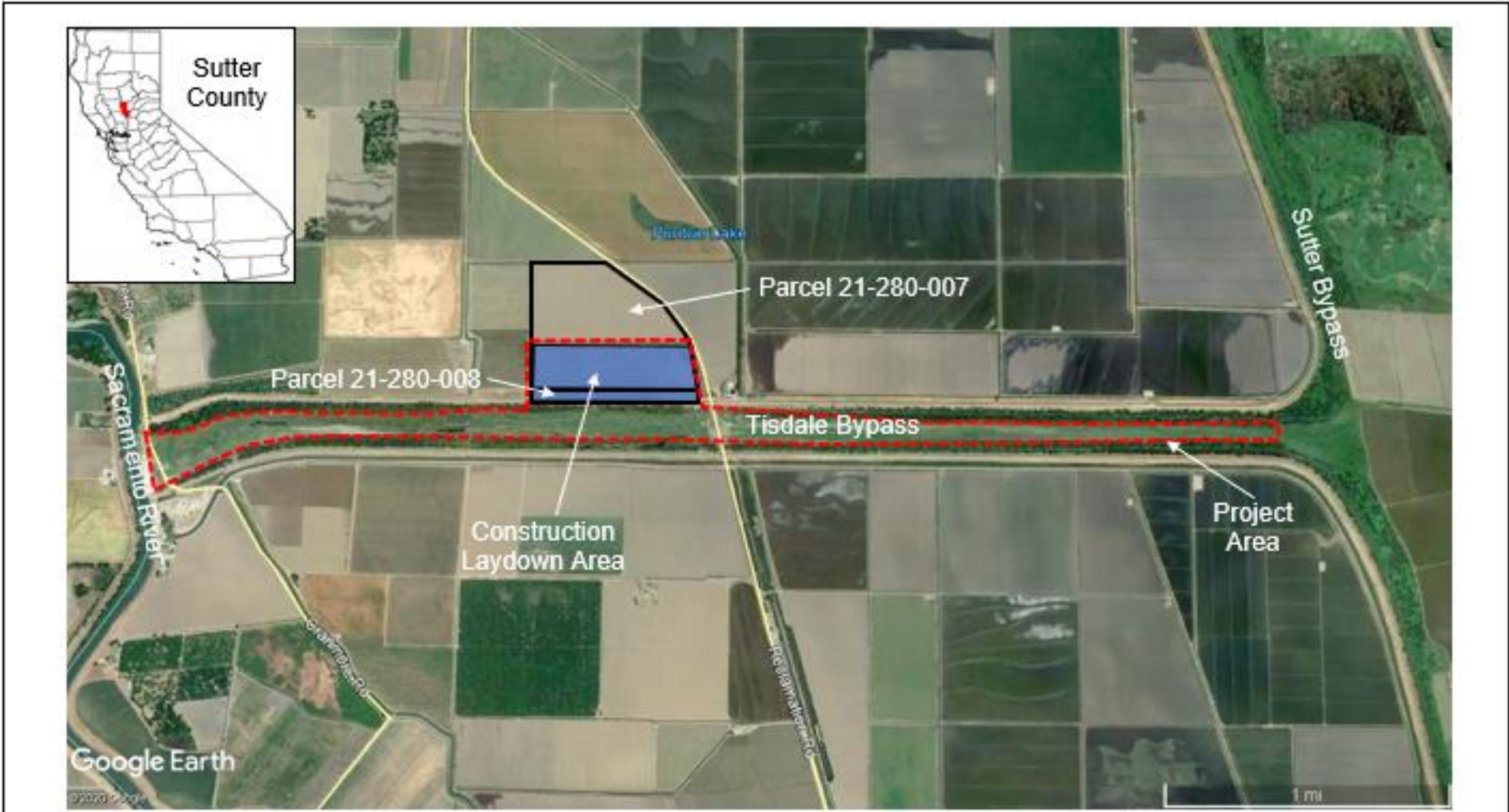
Waiver Order R5-2018-0085
Attachment A - Site Location Map

cc with Enclosures:



Shaun Roher, Department of Water Resources, Sacramento

cc without Enclosures:

Sutter County Environmental Health Department, Yuba City



LEGEND

-  Construction Laydown Area
-  Project Area



~ 0.5 miles

SITE LOCATION MAP

**TISDALE BYPASS SPOIL SITE
SUTTER COUNTY**