



Central Valley Regional Water Quality Control Board

27 September 2024

Chandra Johannesson
East Bay Municipal Utility District
375 11th Street
Oakland, CA 94607

CERTIFIED MAIL
7022-2410-0001-5093-9913

NOTICE OF APPLICABILITY

**CENTRAL VALLEY WATER BOARD RESOLUTION R5-2023-0061, WAIVER OF WASTE DISCHARGE REQUIREMENTS (WDRS), REPORTS OF WASTE DISCHARGE (RWDS), AND/OR WATER RECYCLING REQUIREMENTS (WRRS) FOR SPECIFIC TYPES OF DISCHARGE WITHIN THE CENTRAL VALLEY REGION
EAST BAY MUNICIPAL UTILITY DISTRICT
PARDEE CENTER WATER TREATMENT PLANT
CALAVERAS COUNTY**

On 18 May 2023, East Bay Municipal Utility District (EBMUD, Discharger) submitted a Report of Waste Discharge (RWD) to obtain coverage under Resolution R5-2023-0061, *Waiver of Waste Discharge Requirements (WDRs), Reports of Waste Discharge (RWD), and/or Water Recycling Requirements (WRRS) for Specific Types of Discharge Within The Central Valley Region* (Low Threat Waiver or Waiver) for discharge of filter backwash water to land from Pardee Center Water Treatment Plant (the WTP). Based on the information provided in the RWD, the discharge meets the conditions of the Low Threat Waiver. The discharge is hereby covered under the Waiver and assigned enrollee number R5-2023-0061-0025. Please include this number in all correspondence related to this discharge. In accordance with the requirements in Attachment A of the Low Threat Waiver, this NOA is accompanied by Monitoring and Reporting Program (MRP) R5-2023-0061-0025 to ensure compliance with the conditions in the Low Threat Waiver. This MRP was developed after consideration of your waste characterization and disposal practices described in the RWD. A copy of the [Low Threat Waiver](#) is enclosed and also available on the Central Valley Regional Water Quality Control Board's website (https://www.waterboards.ca.gov/centralvalley/board_decisions/adopted_orders/waivers/r5-2023-0061.pdf).

REGULATORY BACKGROUND

The WTP is owned and operated by EBMUD. The Discharger states that the discharge of the WTP's filter backwash water was previously regulated under General National Pollutant Discharge Elimination System (NPDES) Order 5-00-175, *Dewatering and Other Low Threat*

Discharges to Surface Waters, which expired on 9 December 2008. Although the discharge was regulated under the NPDES General order, the RWD states that no discharges to surface water (Pardee Reservoir) have been observed for at least 15 years. The Discharger has made modifications allowing discharge of backwash water to the onsite leachfield. Therefore, it is appropriate that discharge should be regulated under Low Threat Waiver R5-2023-0061.

PROJECT DESCRIPTION

The WTP is a small drinking water system, serving Pardee Center Campus for EBMUD employees and visitors. The Pardee Center Campus consists of administrative offices, a conference hall with a lodge (accommodating up to 29 people), three employee permanent homes, maintenance, repair, and storage facilities for fleet and heavy equipment, in addition to a small warehouse. About 42 employees permanently work at the location. The WTP is located at the Pardee Center Campus site, on the west side of Pardee Reservoir. The address is 3535 Sandretto Road, Valley Springs, Calaveras County. The Assessor's Parcel Number is 016-001-011-000. The WTP location is shown on Attachment A, which is attached hereto and made part of this NOA by reference.

The water source for the WTP is from Pardee Reservoir. Average daily potable water production is about 1,500 gallons with peak production ranging from 2,500 to 3,000 gallons per day (gpd).

The WTP includes in a 25,000-gallon raw water storage tank, two prefilter systems, a nanofiltration system, chemical feed systems, a 14,000-gallon potable water storage tank, and a 465-square feet leach field. In addition, there is an onsite storage pond which was previously used in case of emergency overflow conditions. The Discharger will not use the pond for emergency storage because the leach field has adequate disposal capacity. Backwash water will be directly discharged to leach field without use of the pond. In the future, the pond will contain stormwater only for wildlife breeding. A site plan is attached as Attachment B, which is attached hereto and made part of this NOA by reference.

As part of routine maintenance for the water treatment system, the prefilter and nanofiltration systems are backwashed with rejected water generated from treatment of the raw water through the nanofiltration system. The backwash discharge consists of two comingled waste streams, including: "reject" water generated from treatment of the raw water through the nanofiltration system and water quality analyzer water generated from potable and raw water sources. From June 2022 through August 31, 2022, the average backwash water flow rate was 1,670 gpd. The Discharger states that the capacity of the leach field is 2,620 gpd and the leach field has an adequate disposal capacity for the average daily flow.

To characterize the raw source water and the WTP's backwash discharge, samples were collected on 15 February 2023, and 1 March 2023. The average concentrations are summarized in the following table compared with applicable Water Quality Objectives for the constituents of concern.

Constituent	Units	Untreated Raw Water	Backwash Water	Water Quality Objective
Electrical Conductivity (EC)	µmhos/cm	55.5	145	900, see note 2
Nitrate as Nitrogen	mg/L	0.11	0.15	10, see note 1
Sodium	mg/L	2.0	14.85	69, see note 3
Chloride	mg/L	1.85	13.5	250, see note 2
Iron, dissolved	µg/L	39.45	46.7	300, see note 2
Manganese, dissolved	µg/L	1.03	8.35	50, see note 2
Arsenic	µg/L	0.33	0.74	10, see note 1

Note:

1. Primary Maximum Contaminant Level.
2. Secondary Maximum Contaminant Level.
3. Agricultural Water Quality Goal.

Based on the sampling results, the discharge of backwash water is unlikely to cause exceedances of water quality objectives. Therefore, the discharge of backwash water complies with the terms and conditions in the Low Threat Waiver.

FACILITY-SPECIFIC REQUIREMENTS

1. Discharge of filter backwash water shall be conducted as described in this NOA and in accordance with the requirements contained in the Low Threat Waiver.
2. Discharge of filtered backwash water at a location or in a manner different from that described in this NOA is prohibited.
3. Discharge of filter backwash water shall be contained and disposed of onsite.
4. The Discharger shall notify the Central Valley Water Board of any change in agreement or proposed use of the discharge of backwash water as described in the RWD and this NOA.
5. The Discharger shall comply with the attached Monitoring and Reporting Program (MRP) R5-2023-0061-0025.
6. Failure to abide by the conditions of this NOA, attached MRP R5-2023-0061-0025, and the Low Threat Waiver, could result in enforcement actions, as authorized by provisions of the California Water Code.

DOCUMENT SUBMITTAL

All monitoring reports and other correspondence should be converted to searchable Portable Document Format (PDF) and submitted electronically. Documents that are less than 50 MB should be emailed to:

centralvalleysacramento@waterboards.ca.gov.

To ensure that your submittal is routed to the appropriate staff person, the following information should be included in the body of the email or any documentation submitted to the mailing address for this office:

Facility Name: Pardee Center Water Treatment Plant
Program: Non-15 Compliance
Order: R5-2023-0061-0025
CIWQS Place ID: CW-889138

Documents that are 50 MB or larger should be transferred to a CD, DVD, or flash drive and mailed to:

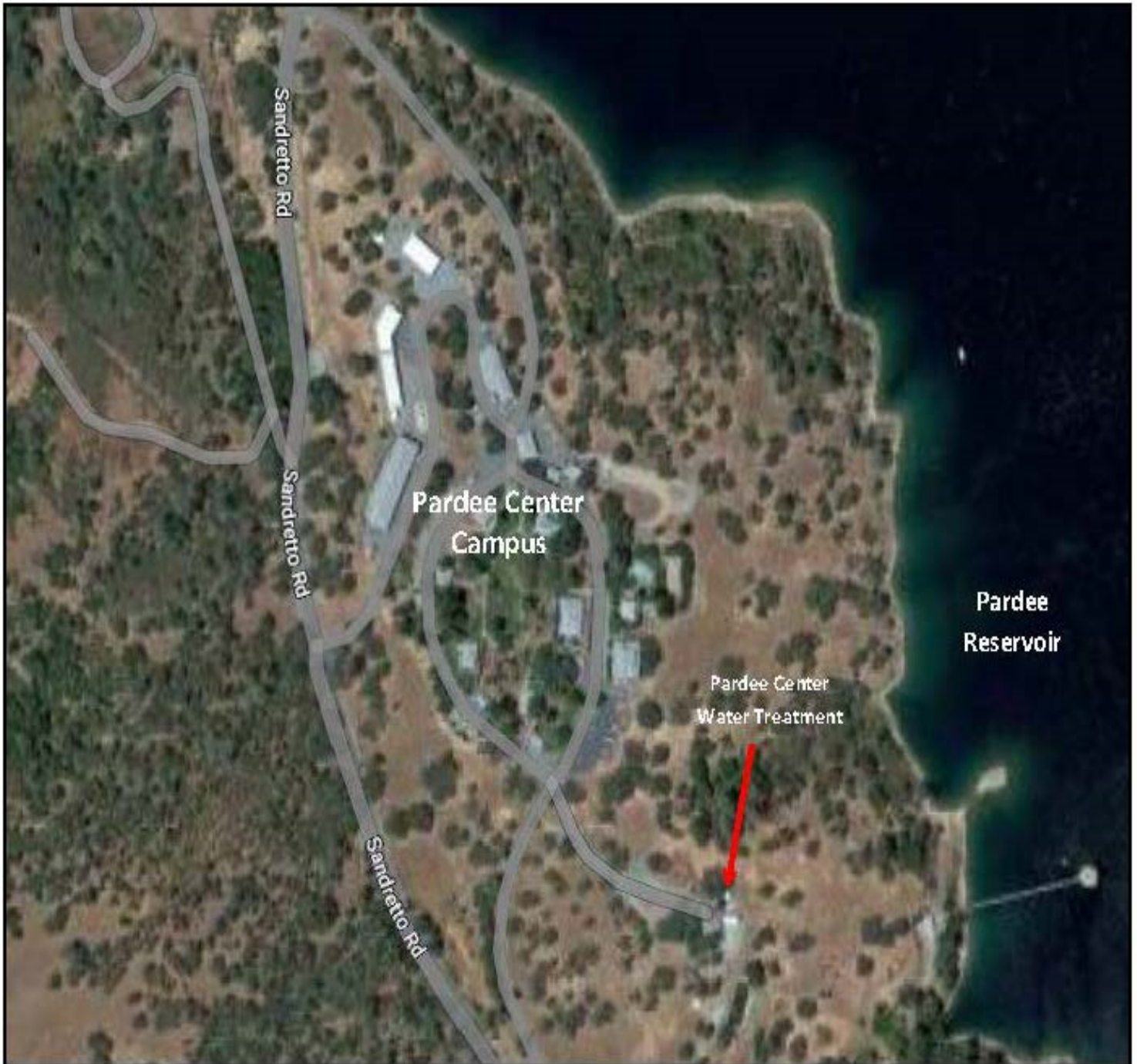
Central Valley Regional Water Quality Control Board
ECM Mailroom
11020 Sun Center Drive, Suite 200
Rancho Cordova, CA 95670

Now that the NOA has been issued, the Board's Compliance and Enforcement section will take over management of your case. Kenny Croyle is your new point of contact for any questions about the Waiver. If you find it necessary to make a change to your permitted operations, Kenny will direct you to the appropriate Permitting staff. You may contact Kenny at (916) 464-4676 or at kcroyle@waterboards.ca.gov.

for Patrick Pulupa
Executive Officer

Enclosures: Monitoring and Reporting Program R5-2023-0061-0025
Low Threat Waiver R5-2023-0061 (Discharger Only)

cc: Calaveras County Environmental Health Department
Howard Hold, Central Valley Water Board, Rancho Cordova

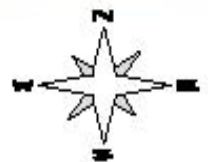


Drawing Reference:

Report of Waste Discharge,
East Bay Municipal Utility
District, May 2023

SITE LOCATION MAP

**EAST BAY MUNICIPAL UTILITY DISTRICT
PARDEE CENTER WATER TREATMENT PLANT**



No Scale



Drawing Reference:
Report of Waste Discharge,
East Bay Municipal Utility
District, May 2023

SITE PLAN

**EAST BAY MUNICIPAL UTILITY DISTRICT
PARDEE CENTER WATER TREATMENT PLANT**

