
Central Valley Regional Water Quality Control Board

27 July 2012

CERTIFIED MAIL
7010 3090 0000 5044 6025

Tony Turkovich
AJ and JM Turkovich 1991 Trust
24901 Buckeye Road
Winters, CA 95694

CERTIFIED MAIL
7010 3090 0000 5044 6032

Chris Turkovich
Button and Turkovich LLC
24604 Buckeye Road
Winters, CA 95694

NOTICE OF APPLICABILITY, CONDITIONAL WAIVER OF WASTE DISCHARGE REQUIREMENTS FOR SMALL FOOD PROCESSORS AND SMALL WINERIES WITHIN THE CENTRAL VALLEY REGION, ORDER R5-2009-0097-0073, BUTTON AND TURKOVICH SEED FACILITY, YOLO COUNTY

Central Valley Regional Water Quality Control Board (Central Valley Water Board) staff reviewed the Report of Waste Discharge (RWD) received on 21 February 2012 and subsequent additional information submitted by AJ and JM Turkovich 1991 Trust to apply for regulatory coverage under the *Conditional Waiver of Waste Discharge Requirements for Small Food Processors and Small Wineries within the Central Valley Region, Order R5-2009-0097* (Order). The Order, which was adopted by the Central Valley Water Board on 8 October 2009, is a conditional waiver of waste discharge requirements for small wineries and small food processors.

The RWD contains the information required and the discharge as described in the RWD qualifies for coverage under the Order. You are hereby assigned Order R5-2009-0097-0073. A copy of the Order is enclosed and it is also available on the internet at:

http://www.waterboards.ca.gov/centralvalley/board_decisions/adopted_orders/#waivers.

Please familiarize yourself with the contents of the Order including the discharge and monitoring requirements. The facility must be operated in accordance with the requirements contained in the Order and with the information submitted in the RWD.

DISCHARGE DESCRIPTION

The Button and Turkovich Seed Facility is located at the intersection of Buckeye Road and Country Road 31A (Assessor's Parcel Number 038-040-034) in Yolo County. AJ and JM Turkovich 1991 Trust owns the seed facility. Button and Turkovich LLC will operate the seed facility. The two entities are hereafter collectively referred to as Co-Dischargers.

Process wastewater is generated from the seed washing and drying operations, including wash down of the equipment and tools. The wash water contains water, dirt, natural plant material,

and sugars. The seed processing season begins in August and runs through October, potentially extending into the first half of November. No chemicals are used in the processing or washing of the seeds. Approximately 100,000 gallons of process water will be produced annually.

Process wastewater is collected in drains, pumped to a 5,000-gallon plastic storage tank, and later land applied by subsurface drip, sprinkler or flood irrigation to approximately 82.6 acres of land application area (LAA). The LAA will be cropped with alfalfa, orchard grass, corn, onions, safflower, sunflower, tomatoes, cucumbers, squash, melon, beans, wheat, or any other crops suited to the land and economic environment. A site map of the seed facility is shown on Attachment A, which is attached and is made part of this Order by reference.

The seed facility wastewater system is designed to operate in conjunction with the Turkovich Family Winery wastewater system, which operates on the same property. The two systems, each containing a separate wastewater storage tank, are designed to operate independently, but can also provide backup storage in the event of an overflow of a wastewater storage tank. However, the winery is regulated under a separate Notice of Applicability, so the two systems shall be operated independently. Therefore, no comingling of wastewater shall occur, nor shall comingled wastewater be applied to the LAA.

Approximately 8 to 12 tons of residual solids will be produced each year. All residual solid wastes will be collected and stored onsite in a solids waste container for later application as a soil amendment to the LAA. In addition, compost may be used as a soil amendment. The solids will be applied evenly to the LAA at a rate of one ton per acre using a tractor driven spreader.

MONITORING AND REPORTING

The Order includes specific monitoring and reporting requirements that you must comply with, including routine monitoring and reporting to the Central Valley Water Board. Please review the Monitoring and Reporting Program closely and establish the appropriate record keeping system so that you are able to complete the required *Annual Monitoring Report* form, contained in the Order. The *Annual Monitoring Report* form must be submitted to our office by **1 February of each year**, even if there is no discharge during the reporting year.

GENERAL INFORMATION AND REQUIREMENTS

The Order includes specific and general conditions required for your operation. In addition, you must maintain control over the discharge and operate in accordance with the information provided in your application and this Notice of Applicability (NOA).

Please review this NOA carefully to ensure that it completely and accurately reflects the facility name, location, and discharge. Failure to comply with the requirements of the Order may result in enforcement action as authorized by provisions of the California Water Code, which could include civil liability.

Discharge of wastes not described in the RWD is prohibited. If the method of waste disposal changes from that described in your application, you must submit an updated RWD to describe the new operation.

Please note that the Order will expire on 8 October 2014, at which time you must do one of the following:

1. Submit a new application with a filing fee to obtain coverage under a subsequently adopted waiver; or
2. Submit an application with a filing fee to apply for individual or general Waste Discharge Requirements, or
3. Cease the discharge.

If you have any questions regarding submitting an updated RWD, or questions about making changes to your permitted operations, please contact Ms. Lani Andam at (916) 464-4723 or landam@waterboards.ca.gov.

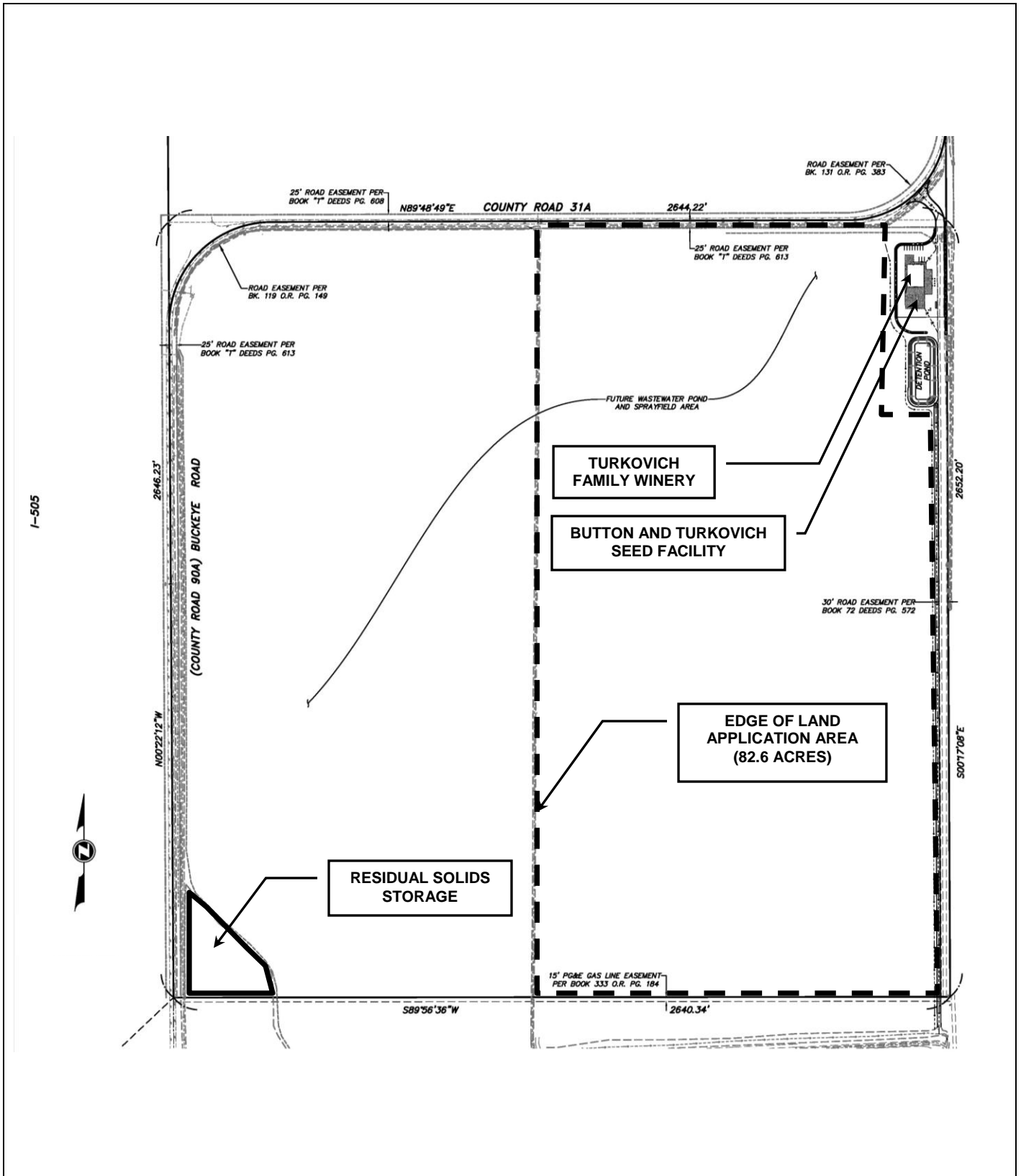
All compliance and enforcement questions should be directed to Mr. Brendan Kenny of the Compliance and Enforcement Section at (916) 464-4635 or bkenny@waterboards.ca.gov. All monitoring reports must be submitted to Mr. Kenny by the compliance due date.

Original signed by Frederick Moss for

PAMELA C. CREEDON
Executive Officer

enclosure: Attachment A
Conditional Waiver of WDRs, Order No. R5-2009-0097

cc w/o enc: Yolo County Environmental Health Division, Woodland



Drawing Reference:
 U.S.G.S
 Quad Name
 TOPOGRAPHIC MAP
 7.5 MINUTE QUAD

SITE LOCATION MAP
 BUTTON AND TURKOVICH SEED FACILITY
 YOLO COUNTY

Not to Scale