

Central Valley Regional Water Quality Control Board

6 July 2017

Skinner Vineyards, LLC
Skinner Vineyards
11030 Santa Monica Blvd, Suite 207
Los Angeles, CA 90025

CERTIFIED MAIL
91 7199 9991 7035 8420 2395

NOTICE OF APPLICABILITY

**WAIVER OF WASTE DISCHARGE REQUIREMENTS FOR SMALL FOOD PROCESSORS,
WINERIES, AND RELATED AGRICULTURAL PROCESSORS
WITHIN THE CENTRAL VALLEY REGION
ORDER R5-2015-0005-0087
SKINNER VINEYARDS, LLC, SKINNER VINEYARDS,
EL DORADO COUNTY**

On 5 February 2015, the Central Valley Regional Water Quality Control Board (Central Valley Water Board) adopted the *Conditional Waiver of Waste Discharge Requirements for Small Food Processors, Wineries, and Related Agricultural Processors within the Central Valley Region, Order R5-2015-0005* (the Waiver).

We are in receipt of your Report of Waste Discharge (RWD) dated 27 June 2017, which stated that you intend to comply with the Tier 2 conditions of the Waiver. Based on the information provided in the RWD, we have determined that the discharge meets the required conditions for approval under the Waiver. You are hereby assigned Order R5-2015-0005-0087. A copy of the Waiver is enclosed and also available at:

http://www.waterboards.ca.gov/centralvalley/board_decisions/adopted_orders/#waivers

Please familiarize yourself with the contents of the Waiver, including the Conditions of Discharge (Waiver Attachment A) and Monitoring and Reporting Program (Waiver Attachment B). Winery waste must be managed and discharged in accordance with the requirements contained in the Conditions of Discharge and with the information submitted in the RWD.

DISCHARGE DESCRIPTION

Skinner Vineyards (the winery) is located at 8054 Fairplay Road, Fairplay in El Dorado County (APN 094-230-02), as shown on Attachment A. The winery is owned and operated by Skinner Vineyards, LLC. Tier 2 allows land application of up to 100,000 gallons of wastewater per year for irrigation of landscaping or crops and land application of residual solids associated with that volume of wastewater. Any process wastewater or residual solids generated in excess of those amounts must be disposed of off-site at an appropriately permitted facility. If

you wish to land apply more wastewater or residual solids, you must submit a new application and to obtain coverage under Tier 3 of the Waiver prior to increasing the discharge volume.

The winery processes approximately 156 tons of grapes per year and generates approximately 90,000 gallons of winery process wastewater on an annual basis. Process wastewater is generated from bottling, cleaning, and crush activities and gravity flows into a series of floor drains which are piped to a 10,000 gallon tank. Flow rates are measured by a propeller meter on the water supply line. Wastewater is disposed of by a tractor pulled trailer system and is distributed as evenly as possible over the 0.5 acre grass covered land application area.

The Discharger estimates that no more than 58 tons (wet weight) of solids (grape stems, pulp, seeds, and skins) are produced annually. The solid waste is spread daily, weather permitting, by a manure spreader to the goat pasture (approximately 18 acres) to prevent anaerobic conditions and odors, and is used as feed for the goats. Solids will be distributed evenly at a rate of approximately 0.3 tons per acre per year.

MONITORING AND REPORTING

Attachment B of the Waiver includes specific monitoring and reporting requirements that you must comply with, including routine monitoring and reporting to the Central Valley Water Board. Please review the Monitoring and Reporting Program closely and establish the appropriate record keeping system so that you are able to complete the required Annual Monitoring Report form, which is also contained in Attachment B of the Waiver.

By **February 1 of each year**, the Annual Monitoring Report must be submitted to our office, even if there is no discharge during the reporting year. The 2017 Annual Monitoring Report is due by **1 February 2018**.

GENERAL INFORMATION AND REQUIREMENTS

The Waiver includes specific and general conditions with which you must comply and you must maintain control over the discharge and operate in accordance with the information provided in your RWD and this Notice of Applicability.

Please review this Notice of Applicability carefully to ensure that it completely and accurately reflects the facility name, location, and details of the proposed discharge. Failure to comply with the requirements of the Waiver may result in enforcement action as authorized by provisions of the California Water Code, which could include civil liability. Discharge of wastes not described in the RWD is prohibited. If the method of waste disposal changes from that described in your RWD, you must submit an updated RWD to describe the new operation. Please note that the Waiver will expire on **5 February 2020**, after which you must do one of the following:

1. Submit a new RWD with a filing fee to obtain coverage under a subsequently adopted waiver,
2. Submit a RWD with a filing fee to apply for individual or general Waste Discharge Requirements, or
3. Cease the discharge.

DOCUMENT SUBMITTALS

All monitoring reports and other correspondence should be converted to searchable Portable Document Format (PDF) and submitted electronically. Documents that are less than 50 MB should be emailed to:

centralvalleysacramento@waterboards.ca.gov

To ensure that your submittal is routed to the appropriate staff person, the following information should be included in the body of the email or any documentation submitted to the mailing address for this office:

Facility Name: Skinner Vineyards, El Dorado County		
Program: Non-15 Compliance	Order: R5-2015-0005-0087	CIWQS Place ID: 755941

Documents that are 50 MB or larger should be transferred to a CD, DVD, or flash drive and mailed to:

Central Valley Regional Water Quality Control Board
ECM Mailroom
11020 Sun Center Drive, Suite 200
Rancho Cordova, CA 95670

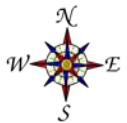
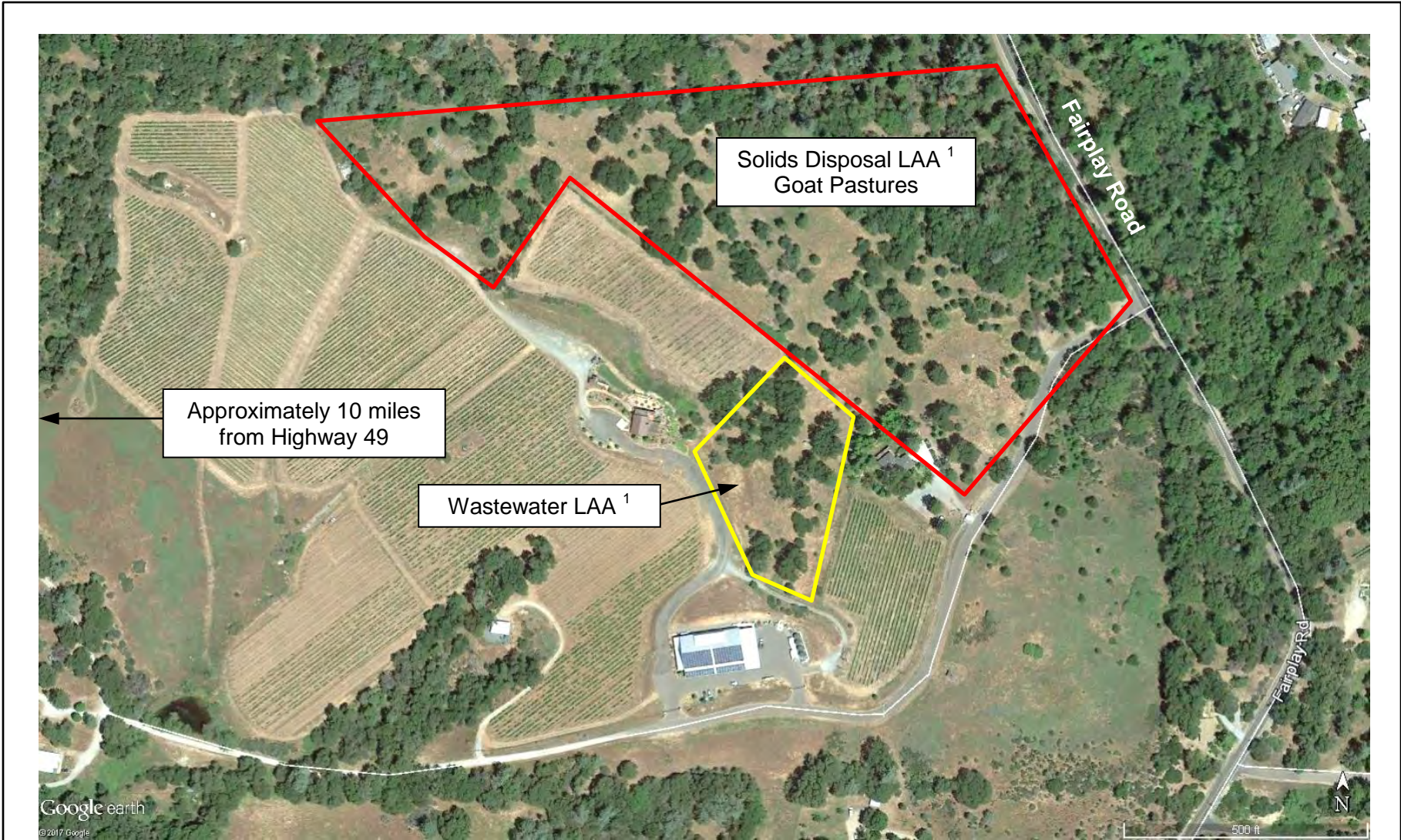
Now that the Notice of Applicability has been issued, the Board's Compliance and Enforcement section will take over management of your case. Kenny Croyle is your new point of contact for any questions about the Waiver. If you find it necessary to make a change to your permitted operations, Kenny will direct you to the appropriate Permitting staff. You may contact Kenny at (916) 464-4676 or at kcroyle@waterboards.ca.gov.

-- original signed by Andrew Altevogt for --

PAMELA C. CREEDON
Executive Officer

Enclosure: Conditional Waiver of WDRs, Order R5-2015-0005
Attachment A: Site Location Map

cc: Gerri Silva, El Dorado County Environmental Health Department, Placerville
Chris Pettinger, Facility Operator, Skinner Vineyards
Dan Hinrichs, DJH Engineering, Placerville



~ 500 feet

SITE LOCATION MAP
SKINNER VINEYARDS
EL DORADO COUNTY

¹ Boundaries are approximate