

Central Valley Regional Water Quality Control Board

11 May 2018

Timothy Do-Cambridge
Sakata Seed America
18095 Serene Drive
Morgan Hill, CA 95037

CERTIFIED MAIL
91 7199 9991 7035 8420 3231

NOTICE OF APPLICABILITY

**WAIVER OF WASTE DISCHARGE REQUIREMENTS FOR SMALL FOOD PROCESSORS,
WINERIES, AND RELATED AGRICULTURAL PROCESSORS
WITHIN THE CENTRAL VALLEY REGION
ORDER R5-2015-0005-0095
SAKATA SEED AMERICA, YOLO COUNTY**

On 5 February 2015, the Central Valley Regional Water Quality Control Board (Central Valley Water Board) adopted the *Conditional Waiver of Waste Discharge Requirements for Small Food Processors, Wineries, and Related Agricultural Processors within the Central Valley Region, Order R5-2015-0005* (the Waiver).

We are in receipt of your Report of Waste Discharge (RWD) dated 26 April 2018, which stated that you intend to comply with the Tier 3 conditions of the Waiver. Based on the information provided in the RWD, we have determined that the discharge meets the required conditions for approval under the Waiver. You are hereby assigned Order R5-2015-0005-0095. A copy of the Waiver is enclosed and also available at:

http://www.waterboards.ca.gov/centralvalley/board_decisions/adopted_orders/#waivers

Please familiarize yourself with the contents of the Waiver, including the Conditions of Discharge (Waiver Attachment A) and Monitoring and Reporting Program (Waiver Attachment B). Process waste must be managed and discharged in accordance with the requirements contained in the Conditions of Discharge and with the information submitted in the RWD.

DISCHARGE DESCRIPTION

Sakata Seed America owns and operates a new agricultural and seed research facility located at 13459 County Road 100, Woodland in Yolo County. The facility includes seed production for commercial seed crops, and the milling, storing, and shipping of seeds to distributors and growers. Tier 3 allows land application of up to 1,000,000 gallons of wastewater per year for irrigation of landscaping or crops and land application of residual solids associated with that volume of wastewater. A minimum of one acre of land application area per 100,000 gallons of

discharged wastewater and associated residual solids is required. Any process wastewater or residual solids generated in excess of those amounts must be disposed of off-site at an appropriately permitted facility.

The facility will process approximately 7 tons of seeds per year and generate approximately 500,000 gallons of process wastewater on an annual basis. The primary processing season will take place from August through October. Approximately 3 tons of residual solids (leaves, stems, skins, pulp, and diatomaceous earth) will be generated annually.

Process wastewater will drain to a storage vault/sump. Solids separator equipment will be used prior to discharge of process wastewater to the land application area (LAA). The LAA is approximately 5 acres where perennial grasses are grown during the growing season of August through October. The location of the LAA is shown on Attachment A, which is attached hereto and made part of this NOA by reference. Process wastewater will be applied by drip or sprinkler irrigation. The facility uses a water softener which generates high salinity waste. This waste will be segregated from the process wastewater system.

Residual solids will be distributed as a soil amendment to the LAA or hauled off-site to a landfill, composting facility, or other recycling facility. A mechanical spreader will be used to transport and spread the solids evenly over the LAA. Residual solids may be temporarily stored on-site if off-site daily removal is not performed.

MONITORING AND REPORTING

Attachment B of the Waiver includes specific monitoring and reporting requirements that you must comply with, including routine monitoring and reporting to the Central Valley Water Board. Please review the Monitoring and Reporting Program closely and establish the appropriate record keeping system so that you are able to complete the required Annual Monitoring Report form, which is also contained in Attachment B of the Waiver.

By **February 1 of each year**, the Annual Monitoring Report must be submitted to our office, even if there is no discharge during the reporting year. The 2018 Annual Monitoring Report is due by **1 February 2019**.

GENERAL INFORMATION AND REQUIREMENTS

The Waiver includes specific and general conditions with which you must comply and you must maintain control over the discharge and operate in accordance with the information provided in your RWD and this Notice of Applicability.

Please review this Notice of Applicability carefully to ensure that it completely and accurately reflects the facility name, location, and details of the proposed discharge. Failure to comply with the requirements of the Waiver may result in enforcement action as authorized by provisions of the California Water Code, which could include civil liability. Discharge of wastes not described in the RWD is prohibited. If the method of waste disposal changes from that described in your RWD, you must submit an updated RWD to describe the new operation.

Please note that the Waiver will expire on **5 February 2020**, after which you must do one of the following:

1. Submit a new RWD with a filing fee to obtain coverage under a subsequently adopted waiver,
2. Submit a RWD with a filing fee to apply for individual or general Waste Discharge Requirements, or
3. Cease the discharge.

DOCUMENT SUBMITTALS

All monitoring reports and other correspondence should be converted to searchable Portable Document Format (PDF) and submitted electronically. Documents that are less than 50 MB should be emailed to:

centralvalleysacramento@waterboards.ca.gov.

To ensure that your submittal is routed to the appropriate staff person, the following information should be included in the body of the email or any documentation submitted to the mailing address for this office:

Facility Name: Sakata Seed America, Yolo County		
Program: Non-15 Compliance	Order: R5-2015-0005-0095	CIWQS Place ID: 846959

Documents that are 50 MB or larger should be transferred to a CD, DVD, or flash drive and mailed to:

Central Valley Regional Water Quality Control Board
ECM Mailroom
11020 Sun Center Drive, Suite 200
Rancho Cordova, CA 95670

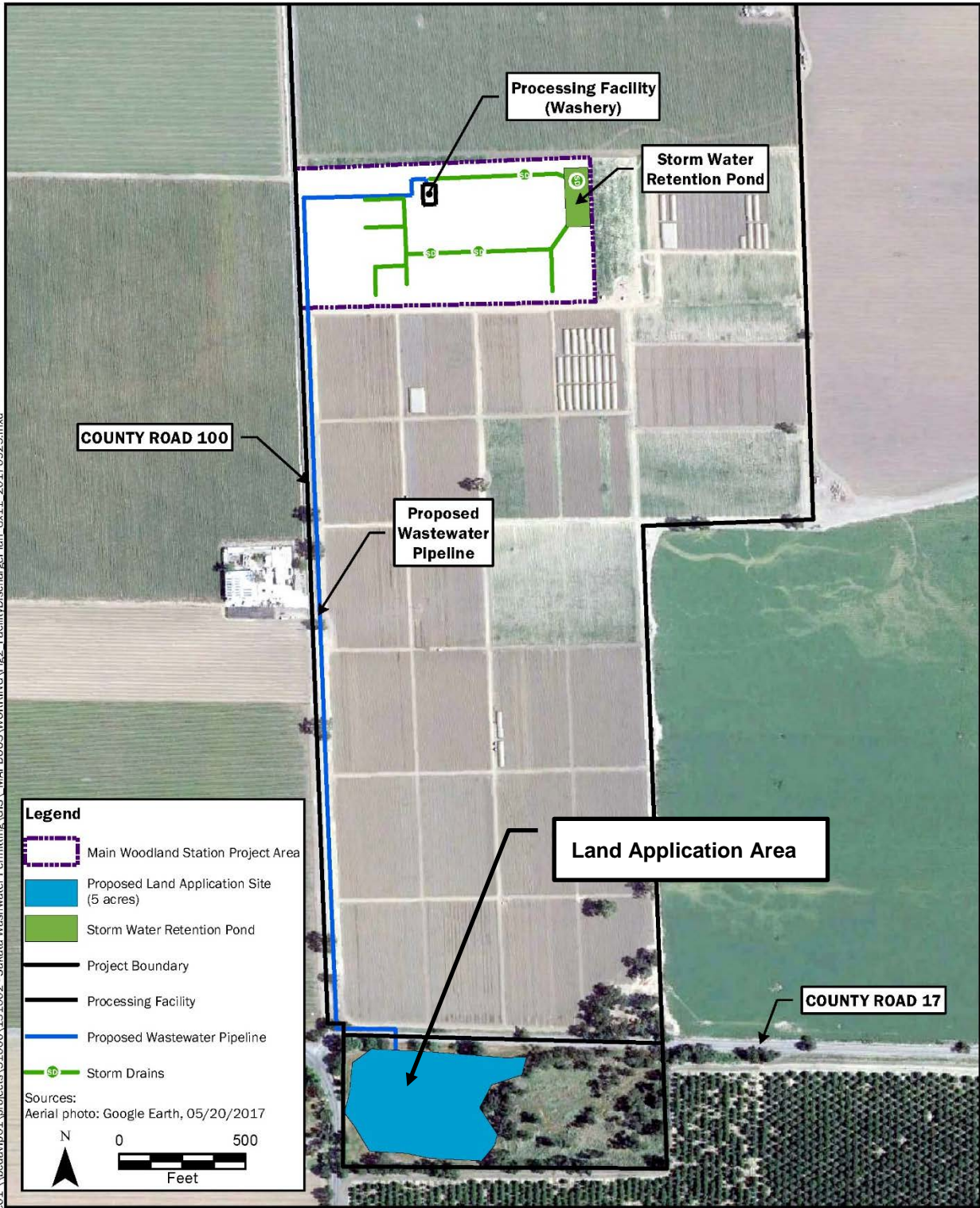
Now that the Notice of Applicability has been issued, the Water Board's Compliance and Enforcement section will take over management of your case. Brendan Kenny is your new point of contact for any questions about compliance with this Waiver. If you find it necessary to make a change to your permitted operations, Brendan will direct you to the appropriate Permitting staff. You may contact Brendan at (916) 464-4635 or at *bkenny@waterboards.ca.gov.*

- original signed by Andrew Altevogt for -

Patrick Pulupa, Incoming Executive Officer for
Pamela C. Creedon, Executive Officer

enc: R5-2015-0005-0095 Attachment A
Conditional Waiver of WDRs, Order R5-2015-0005

cc w/o enc: Yolo County Environmental Health, Woodland
Brian Delemos, Laugenour and Meikle, Woodland



Drawing Reference:
Notice of Applicability,
April 2018

SITE LOCATION MAP
SAKATA SEED AMERICA
WOODLAND FACILITY
YOLO COUNTY

Approx. Scale:
AS NOTED