

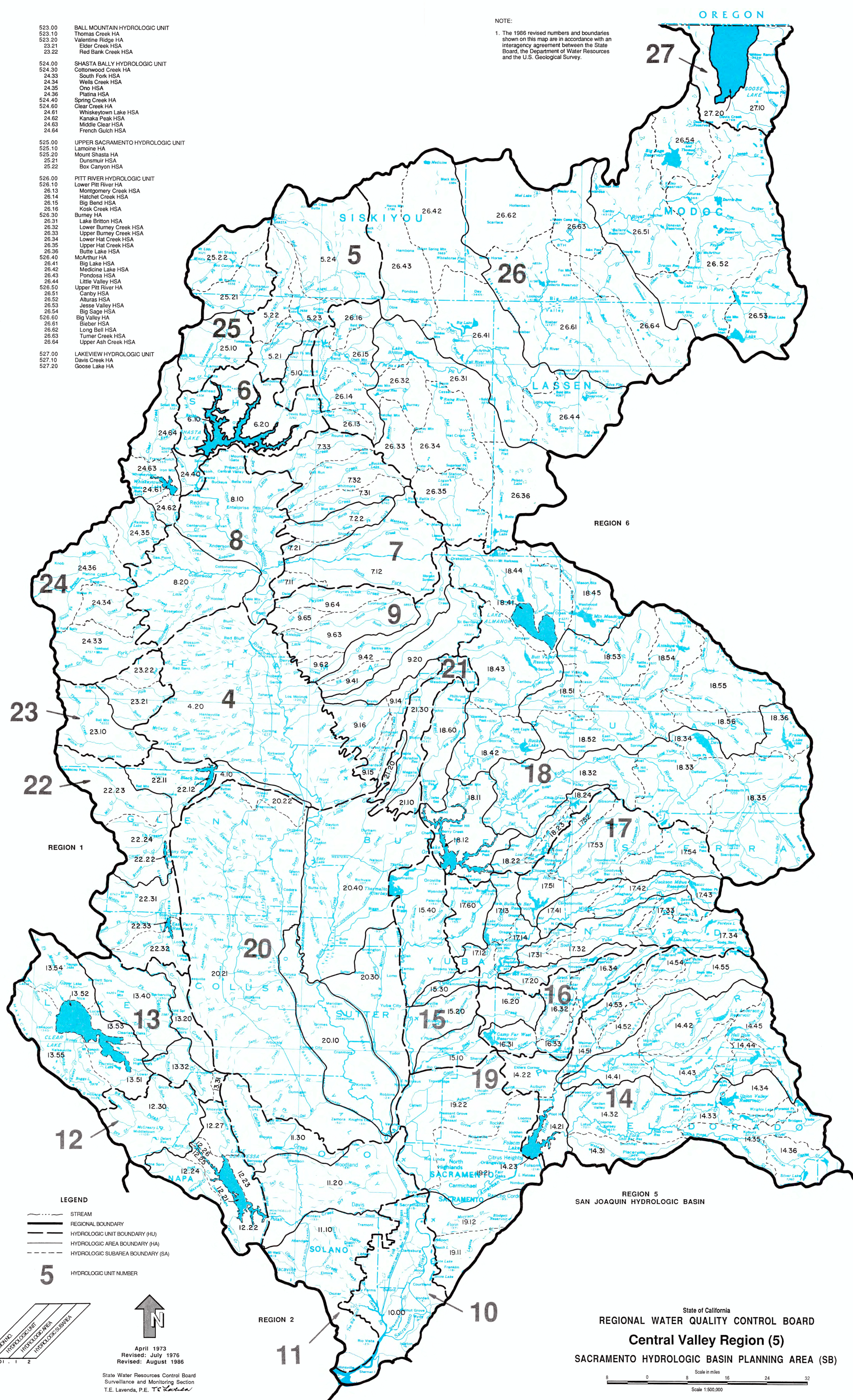
# Sacramento Hydrologic Basin Planning Area Map

## REGION 5 INDEX SACRAMENTO HYDROLOGIC BASIN

504.00	TEHAMA HYDROLOGIC UNIT	523.00	BALL MOUNTAIN HYDROLOGIC UNIT
504.10	Lower Stony Creek HA	523.10	Thomas Creek HA
504.20	Red Bluff HA	523.20	Valentine Ridge HA
505.00	MC CLOUD RIVER HYDROLOGIC UNIT	23.21	Elder Creek HSA
505.10	Squaw Creek HA	23.22	Red Bank Creek HSA
505.20	Winton HA	524.00	SHASTA BALLY HYDROLOGIC UNIT
05.21	Lower McCloud River HSA	524.30	Cottonwood Creek HA
05.22	Squaw Valley HSA	24.33	South Fork HSA
05.23	McCloud Reservoir HSA	24.34	Wells Creek HSA
05.24	Upper McCloud River HSA	24.35	Ono HSA
506.00	SHASTA DAM HYDROLOGIC UNIT	24.36	Platina HSA
506.10	Shasta Lake HA	524.40	Spring Creek HA
506.20	Lake Shasta Drainage HA	524.60	Clear Creek HA
507.00	WHITMORE HYDROLOGIC UNIT	24.61	Whiskeytown Lake HSA
507.10	Manton HA	24.62	Kanaka Peak HSA
07.11	Inks Creek HSA	24.63	Middle Clear HSA
07.12	Battle Creek HSA	24.64	French Gulch HSA
507.20	Shingletown HA	525.00	UPPER SACRAMENTO HYDROLOGIC UNIT
07.21	Ash Creek HSA	525.10	Lamaine HA
07.22	Inwood HSA	525.20	Mount Shasta HA
507.30	Cow Creek HA	25.21	Dunsmuir HSA
07.31	South Cow Creek HSA	25.22	Box Canyon HSA
07.32	Old Cow Creek HSA	526.00	PITT RIVER HYDROLOGIC UNIT
07.33	Little Cow Creek HSA	526.10	Lower Pitt River HA
508.00	REDDING HYDROLOGIC UNIT	26.13	Montgomery Creek HSA
508.10	Enterprise HA	26.14	Hatchet Creek HSA
508.20	Lower Cottonwood HA	26.15	Big Bend HSA
509.00	EASTERN TEHAMA HYDROLOGIC UNIT	26.16	Koak Creek HSA
509.10	Cohasset HA	526.30	Burney HA
09.14	Big Chico Creek HSA	26.31	Lake Britton HSA
09.15	Mud Creek HSA	26.32	Lower Burney Creek HSA
09.16	Pine Creek HSA	26.33	Upper Burney Creek HSA
509.20	Deer Creek HA	26.34	Lower Hat Creek HSA
509.30	Barkley Mountain HA	26.35	Upper Hat Creek HSA
09.41	Big Dry Creek HSA	26.36	Butte Lake HSA
09.42	Upper Mill Creek HSA	526.40	McArthur HA
509.60	Lyonsville HA	26.41	Big Lake HSA
09.62	Dyer Creek HSA	26.42	Medicine Lake HSA
09.63	Antelope Creek HSA	26.43	Pondosa HSA
09.64	Salt Creek HSA	26.44	Little Valley HSA
09.65	Paynes Creek HSA	526.50	Upper Pitt River HA
510.00	SACRAMENTO DELTA HYDROLOGIC UNIT	26.51	Canby HSA
511.00	VALLEY PUTAH-CACHE HYDROLOGIC UNIT	26.52	Alturas HSA
511.10	Elmira HA	26.53	Jesse Valley HSA
511.20	Lower Putah Creek HA	26.54	Big Sage HSA
511.30	Lower Cache Creek HA	526.60	Valley HA
512.00	PUTAH CREEK HYDROLOGIC UNIT	26.61	Bieber HSA
512.10	Berryessa HA	26.62	Long Bell HSA
12.21	Lake Berryessa HSA	26.63	Turner Creek HSA
12.22	Capell Creek HSA	26.64	Upper Ash Creek HSA
12.23	Berryessa Peak HSA	527.00	LAKEVIEW HYDROLOGIC UNIT
12.24	Pope Creek HSA	527.10	Davis Creek HA
12.25	Spanish Valley HSA	527.20	Goose Lake HA
12.26	Dyer Creek HSA		
12.27	Elicuera Creek HSA		
512.30	Upper Putah Creek HA		
513.00	CACHE CREEK HYDROLOGIC UNIT		
513.10	Beir Creek HA		
513.20	Middle Cache Creek HA		
13.31	Rumsey HSA		
13.32	Wilson Valley HSA		
513.40	North Fork Cache Creek HA		
513.50	Upper Cache Creek HA		
13.51	Lower Lake HSA		
13.52	Clear Lake HSA		
13.53	Lucerne HSA		
13.54	Upper Lake HSA		
13.55	Lakeport HSA		
514.00	AMERICAN RIVER HYDROLOGIC UNIT		
514.10	Foothill Drain HA		
14.21	Green Valley HSA		
14.22	Auburn HSA		
514.20	Folsom Reservoir HSA		
514.30	South Fork American HA		
14.31	Weber Creek HSA		
14.32	Colusa HSA		
14.33	Silver Creek HSA		
14.34	Union Valley HSA		
14.35	Kyburz HSA		
14.36	Silver Fork HSA		
514.40	Middle Fork American HA		
14.41	Volcanville HSA		
14.42	Duncan Canyon HSA		
14.43	Rubicon HSA		
14.44	Loon Lake HSA		
14.45	Hell Hole HSA		
514.50	North Fork American HA		
14.51	Clementine HSA		
14.52	Big Reservoir HSA		
14.53	Gold Run HSA		
14.54	Blue Canyon HSA		
14.55	Snow Mountain HSA		
515.00	MARYSVILLE HYDROLOGIC UNIT		
515.10	Lower Bear River HA		
515.20	Oliverhurst HA		
515.30	Lower Yuba River HA		
515.40	Lower Feather River HA		
516.00	BEAR RIVER HYDROLOGIC UNIT		
516.10	Dry Creek HA		
516.20	Upper Bear HA		
16.31	Camp Far West HSA		
16.32	Wolf Creek HSA		
16.33	Lake Combs HSA		
16.34	Rollins Reservoir HSA		
517.00	YUBA RIVER HYDROLOGIC UNIT		
517.10	Ure Mountain HA		
17.12	Browns Valley HSA		
17.13	Mildred Lake HSA		
17.14	Englebright HSA		
517.20	Nevada City HA		
517.30	South Yuba HA		
17.31	Shady Creek HSA		
17.32	North Bloomfield HSA		
17.33	Canyon Creek HSA		
17.34	Lake Spaulding HSA		
517.40	Middle Yuba HA		
17.41	North San Juan HSA		
17.42	Camptonville HSA		
17.43	Jackson Meadows HSA		
517.50	North Yuba HA		
17.51	Bullards Bar HSA		
17.52	Slate Creek HSA		
17.53	Goodyears Bar HSA		
17.54	Sierra City HSA		
517.60	South Honcut Creek HA		
518.00	FEATHER RIVER HYDROLOGIC UNIT		
518.10	Bloomer Hill HA		
18.11	Reservoir Drain HSA		
18.12	Oroville Reservoir HSA		
518.20	South Fork Feather HA		
18.22	Lumpkin HSA		
18.23	Lost Creek HSA		
18.24	Little Grass Valley HSA		
518.30	Middle Fork Feather HA		
18.32	Hartman Bar HSA		
18.33	Sloat HSA		
18.34	Lake Davis HSA		
18.35	Sierra Valley HSA		
18.36	Frenchman Lake HSA		
518.40	North Fork Feather HA		
18.41	Lake Amador HSA		
18.42	Bucks Lake HSA		
18.43	Butt Valley HSA		
18.44	Mount Siskiyou HSA		
18.45	Mountain Meadows HSA		
518.50	East Branch North Fork HA		
18.51	Twain HSA		
18.52	Quincy HSA		
18.53	Crescent Mill HSA		
18.54	Genesee HSA		
18.55	Last Chance HSA		
18.56	Red Clover HSA		
518.60	West Branch North Fork HA		
519.00	VALLEY-AMERICAN HYDROLOGIC UNIT		
519.10	Morrison Creek HA		
19.11	Franklin HSA		
19.12	Florin HSA		
519.20	Coon-American HA		
19.21	Lower American HSA		
19.22	Pleasant Grove HSA		
520.00	COLUSA BASIN HYDROLOGIC UNIT		
520.10	Sycamore-Sutter HA		
520.20	Glenn Colusa HA		
20.21	Colusa Trough HSA		
20.22	Oriand HSA		
520.30	Sutter Bypass HA		
520.40	Butte Basin HA		
521.00	BUTTE CREEK HYDROLOGIC UNIT		
521.10	Upper Dry Creek HA		
521.20	Upper Butte Creek HA		
521.30	Upper Little Chico HA		
522.00	STONY CREEK HYDROLOGIC UNIT		
522.10	Newville HA		
22.11	North Fork Stony HSA		
22.12	Black Butte Reservoir HSA		
522.20	Western Glenn HA		
22.22	Stony Gorge Reservoir HSA		
22.23	Grindstone Creek HSA		
22.24	Briscoe Creek HSA		
522.30	Fouis Springs HA		
22.31	Middle Fork Stony HSA		
22.32	Little Stony HSA		
22.33	East Park Reservoir HSA		

NOTE:

1. The 1968 revised numbers and boundaries shown on this map are in accordance with an interagency agreement between the State Board, the Department of Water Resources and the U.S. Geological Survey.



**LEGEND**

—	STREAM
—	REGIONAL BOUNDARY
—	HYDROLOGIC UNIT BOUNDARY (HU)
—	HYDROLOGIC AREA BOUNDARY (HA)
—	HYDROLOGIC SUBAREA BOUNDARY (SA)
5	HYDROLOGIC UNIT NUMBER

April 1973  
Revised: July 1976  
Revised: August 1986

State Water Resources Control Board  
Surveillance and Monitoring Section  
T.E. Lavenda, P.E. T.C. ...

State of California  
REGIONAL WATER QUALITY CONTROL BOARD  
**Central Valley Region (5)**  
SACRAMENTO HYDROLOGIC BASIN PLANNING AREA (SB)

Scale in miles  
Scale 1:500,000