

Mule Creek Watershed

Public Briefing

December 14, 2021, 5:00-7:00 pm



California Water Boards | Central Valley Region

Logistics

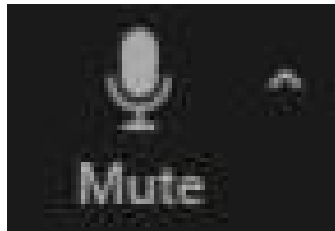
- Meeting is being recorded
- Participants will be muted until comment period
- Chat to everyone feature is disabled
- Comments and questions can be emailed during the presentation to:

RB5S-Mule-Creek@Waterboards.ca.gov

Ways to Participate



Raise hand to make a comment, lower hand when done

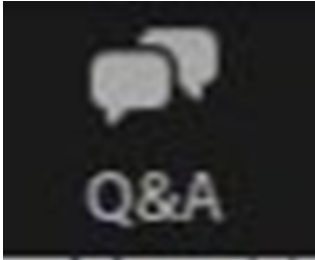


If you are making a verbal comment, make sure you are not muted



Question and answer function

Question and Answer Feature



Click on the Q&A icon

- ✓ Ask questions and receive answers from Waterboards staff
- ✓ View other participants questions and "upvote" if you have the same question
- ✓ You may choose to submit an anonymous question

The screenshot shows a web interface for a "Question and Answer" session. At the top, there are tabs for "All questions (3)" and "My questions (3)". The main content area displays a list of questions and answers. The first question is from an "Anonymous Attendee" at 11:21 AM, asking "Can I ask a question anonymously?". It has one answer from "OPP SWRCB" at 11:25 AM, which says "Yes, click the box that says 'send anonymously'". The second question is from another "Anonymous Attendee" at 11:22 AM, asking "How will I see the answers to my question?". It has one answer from "OPP SWRCB" at 11:25 AM, which says "Your answer will appear in this Q&A box and/or verbally by a staff member." Below the list is a text input field with the placeholder "Type your question here...". At the bottom of the input field, there is a checked checkbox for "Send anonymously", and "Cancel" and "Send" buttons. At the very bottom, there is a link for "Who can see your questions?".

Introductions



California Water Boards | Central Valley Region

Opening Remarks

John "J.J." Baum
Assistant Executive Officer



California Water Boards | Central Valley Region

Meeting Road Map

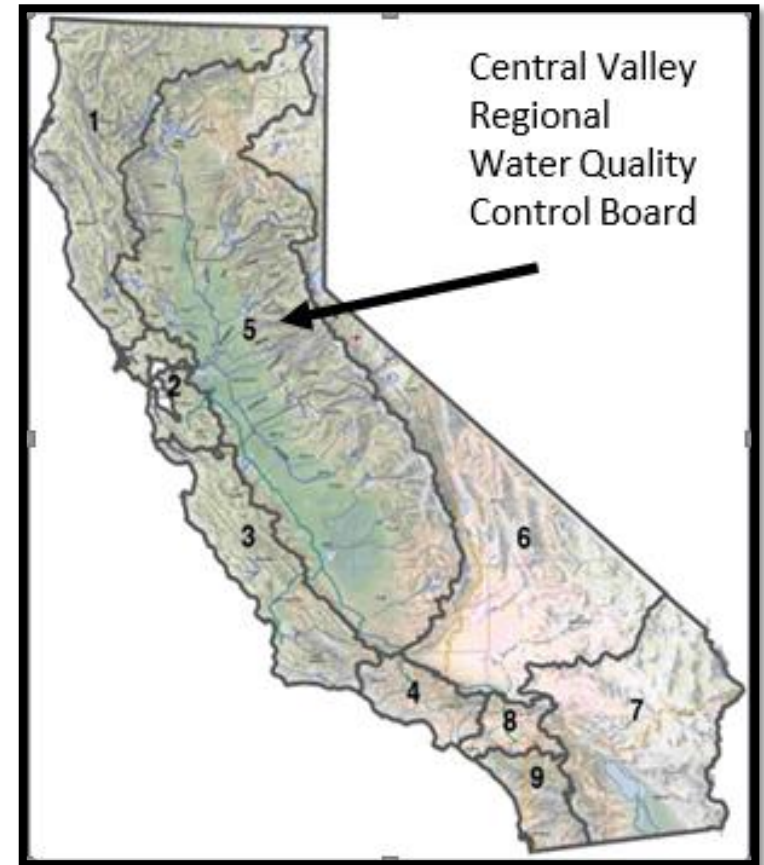
- Overview of the Central Valley Regional Water Quality Control Board mission, responsibilities, authority.
- The Mule Creek watershed and the interconnection of local wastewater features.
- The permits regulating those wastewater features.
- Compliance issues within the watershed.
- Strategy and efforts to address compliance issues.
- Q&A session.

Goals for the Meeting

- Provide an introduction to our agency and the work we do.
- Discuss this complex watershed.
- Encourage better communication between the communities living in this watershed.
- Provide an opportunity for the public to ask questions.
- Gather information for an anticipated follow up meeting in the Spring of 2022.

Central Valley Regional Water Quality Control Board (CVRWQCB)

- One of Nine Regional Water Boards
- The CVRWQCB is the largest in the state.
- Three offices (Redding, Rancho Cordova, and Fresno)
- Amador County and the Mule Creek Watershed wastewater permits managed out of the Rancho Cordova Office.





Central Valley Water Boards' Mission Statement

To preserve, enhance, and restore the quality of the Central Valley Region's water resources for the protection of the environment, public health, and all beneficial uses for the benefit of present and future generations.

Program Implementation Regional Water Boards



- Federal Clean Water Act
 - National Pollutant Discharge Elimination System Permits – regulate pollutant discharges to surface waters only.
 - United States Environmental Protection Agency (USEPA) is our regulatory partner.
- California Water Code -Porter Cologne Act
 - Regulate waste discharges to surface and groundwater of the State
 - Tools include waste discharge requirements, conditional waivers, enforcement orders

Mule Creek Watershed

Kenny Croyle

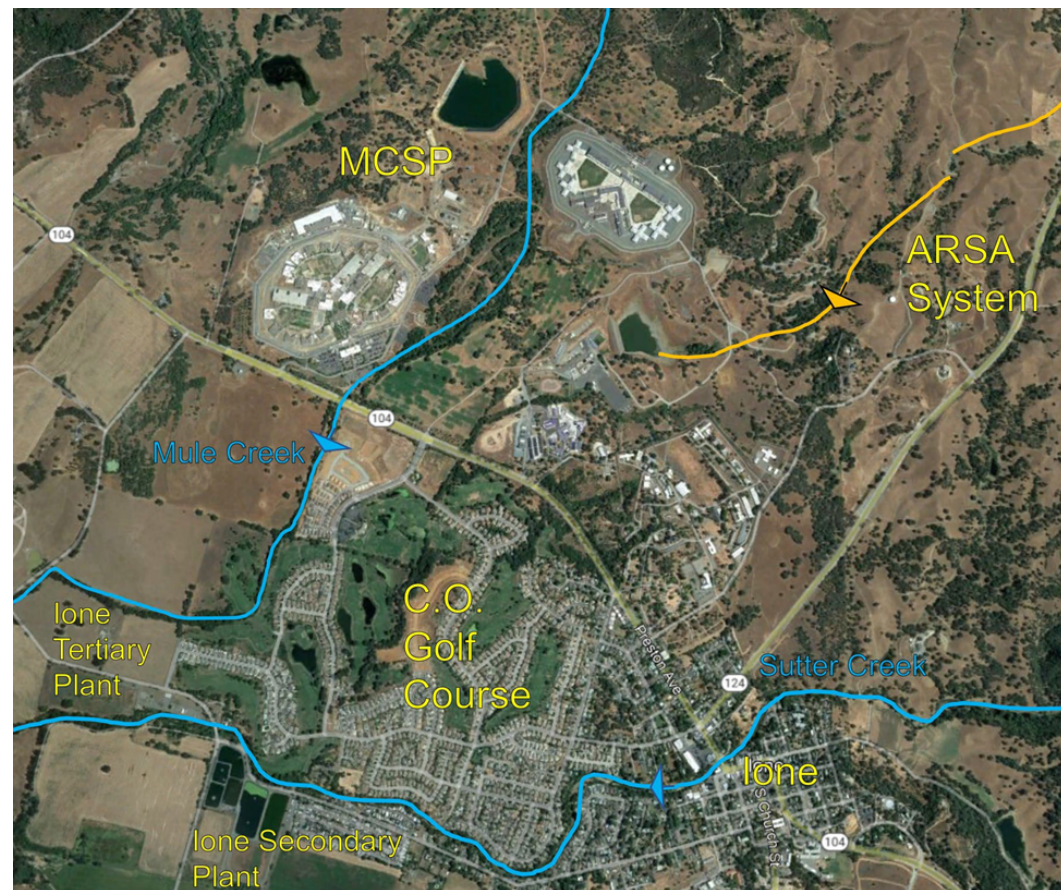
Water Resources Control Engineer



California Water Boards | Central Valley Region

Surface Water in the Mule Creek Watershed

- Mule Creek and Sutter Creek flow southwest and west, respectively, towards Dry Creek, and eventually the Mokelumne River and Sacramento Delta.
- Both Mule Creek and Sutter Creek have seasonal flow and go dry during the summer.

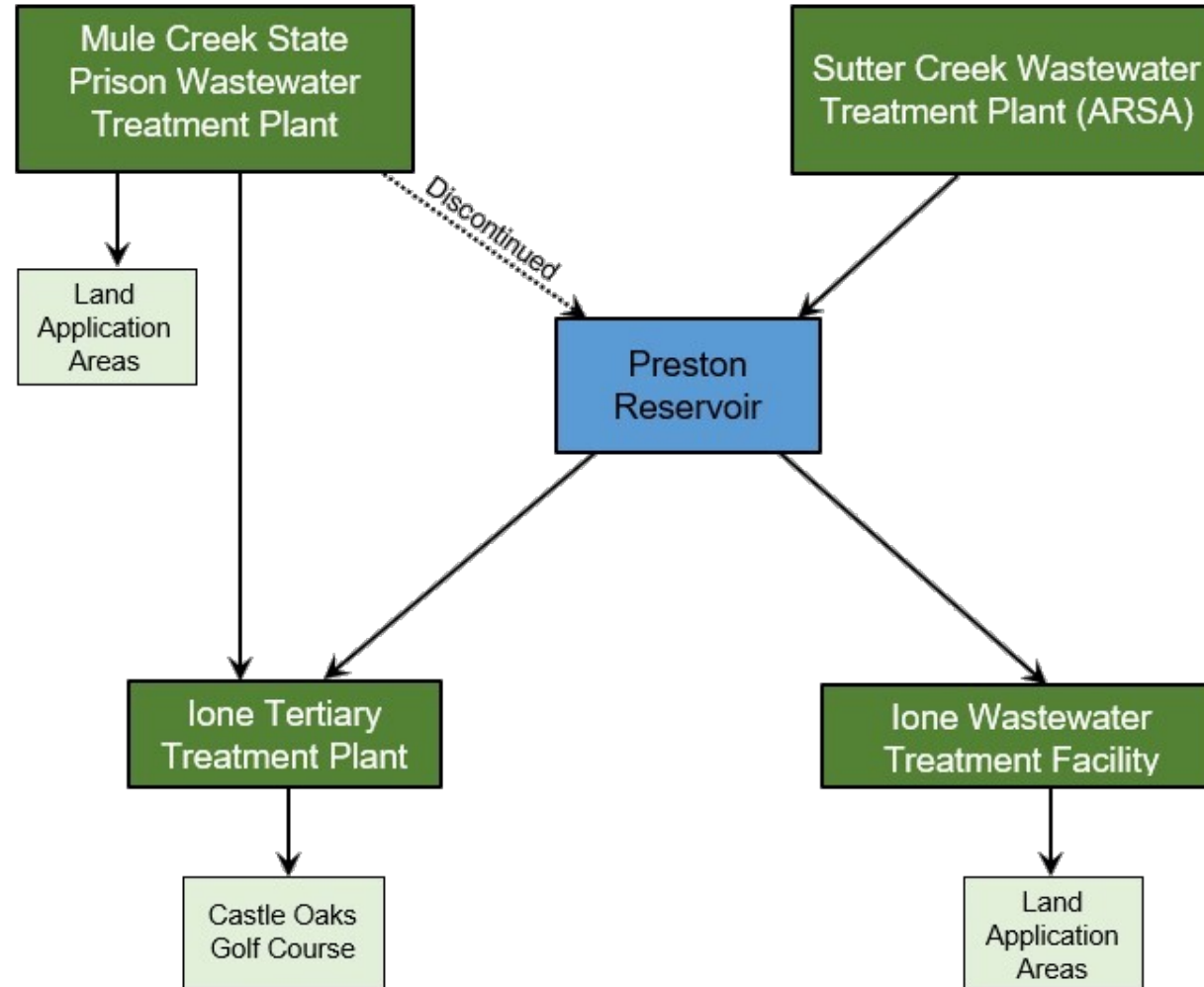


Groundwater in the Mule Creek Watershed

Groundwater recharge occurs in the local watershed via percolation from the following features:

- Effluent storage reservoirs and ponds
- Percolation basins
- Land application areas
- Castle Oaks Golf Course
- Residential landscape irrigation

Ione Area Wastewater Treatment Facilities



Waste Discharge Requirements

Discharge to Land Permitting

Scott Armstrong, P.G., C.HG.
Senior Engineering Geologist



California Water Boards | Central Valley Region

Waste Discharge to Land Program



Wastewater Treatment



Food Processing



Sand and Gravel Processing



Landscape Irrigation



Golf Course Irrigation



Land Application

Ione Area Wastewater Treatment Facilities

- Mule Creek State Prison Wastewater Treatment Plant
(Secondary Treatment with Disinfection)
- Ione Tertiary Treatment Plant
(Tertiary Treatment with Disinfection)
- Sutter Creek Wastewater Treatment Plant (ARSA)
(Secondary Treatment with Disinfection)
- Ione Wastewater Treatment Facility
(Secondary Treatment)

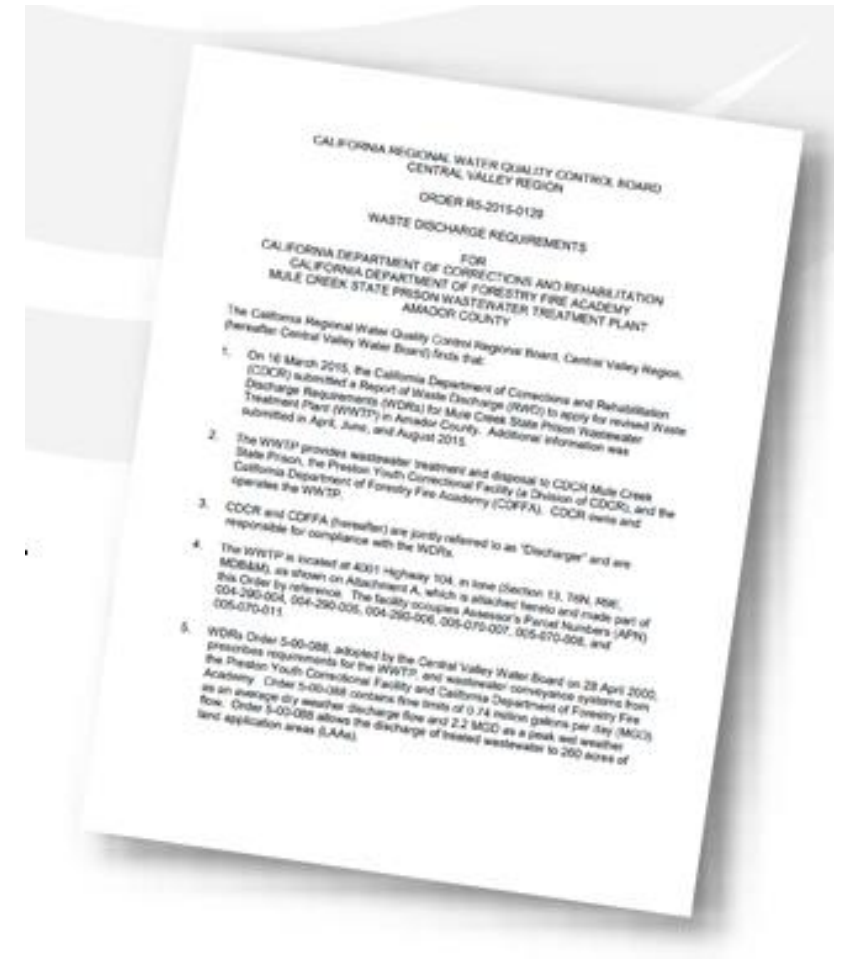
Waste Discharge Requirements (WDRs)

Permit Requirements and Specifications

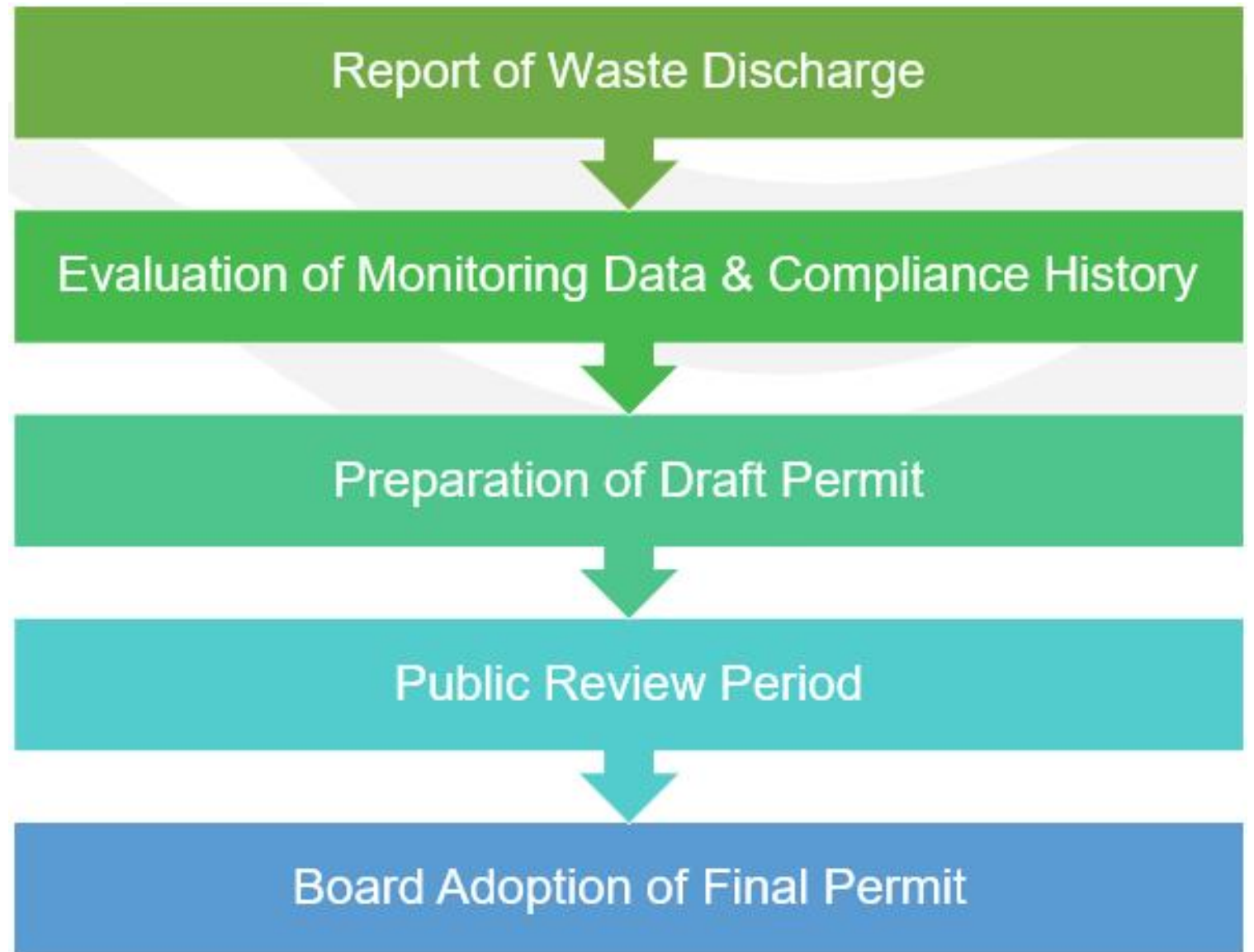
- Effluent and Groundwater Limitations
- Flow Limits
- Other Protective Measures

Monitoring and Reporting Program (MRP)

- Tracks Treatment Performance
- Confirms Compliance with Permit Limits



Permitting Process



Current Permitting Activities

Revised MRPs issued in October 2021

- Mule Creek State Prison Wastewater Treatment Plant
- City of Lone Tertiary Treatment Plant(Castle Oaks Golf Course)

Reviewing Monitoring Data and Report of Waste Discharge

Updating Waste Discharge Requirements



Municipal Storm Water

Elizabeth (Liz) Lee

Senior Engineering Specialist



California Water Boards | Central Valley Region

Municipal Storm Water

Introduction

- Municipal Storm Water Program
- Protection of Mule Creek
- CDCR's Storm Water Program Implementation
- Regional Board Role



Municipal Storm Water Program

- Background
- Storm Water Permit
 - Reduce storm water impacts
 - Regional Board enforcement authority
 - 5-Year process

Municipal Storm Water



Municipal Storm Water

Storm Water Monitoring and Reporting Program

- Requires monitoring
- Evaluates progress

Monitoring Data

- Quarterly submittal and available to the public
- Verification of accuracy
- Effective storm water program
- Identification of issues



Municipal Storm Water

Next Steps

- Storm Water Permit
 - Annual Reporting
 - June 30, 2023 – Storm Water Program fully developed
- Storm Water Monitoring & Reporting Program
 - Verifies Storm Water Program is working



Mule Creek State Prison Sanitary Sewer System WDRs

Kari Holmes

Compliance & Enforcement
Program Manager



California Water Boards | Central Valley Region

Sanitary Sewer System General Order

- State Water Resources Control Board General Order
- Adopted by State Board
 - 2006 Waste Discharge Requirements
 - 2013 Revised Monitoring and Reporting Program
- Sanitary Sewer Overflow Reduction Program
 - Prohibits discharges to waters of the U.S. per Clean Water Act
 - Category 1 Spill – Surface Water



Sanitary Sewer System General Order

- Requires each system owner to:
 - Develop and implement a Sanitary Sewer Management Plan
- Perform critical system operation and maintenance
- Publicly report spills from systems
 - Office of Emergency Services
 - California Integrated Water Quality System

Mule Creek State Prison Sanitary Sewer System

- Regional Board responsible for Compliance & Enforcement
- Sewer System Management Plan Evaluation
 - Operation and Maintenance Program
 - Overflow Emergency Response Plan
 - System Evaluation and Capacity Assurance Plan
- Trained Operators
- Spills Reported

Compliance and Enforcement

Kari Holmes

Compliance & Enforcement
Program Manager



Background & History



- Complaint – 28 December 2017
 - Clear and jet black, containing solids, elevated temperatures

- Inspection – 4 January 2018
- Sampled water quality
 - Total and fecal coliforms
 - E. coli



Inspections

- Cease Discharge – 18 January 2018
- Investigative Order – 14 February 2018
- Follow Up Inspections – 22 February 2018 thru 5 October 2018



Compliance & Enforcement

- \$2.5 million Stipulated Order – 18 February 2021
- Enrolled in Phase II Municipal Stormwater Permit – April 2019
- Cleanup & Abatement Account – \$1,605,811
- Enhanced Compliance Actions – \$894,189
 - Project # 1 – Landscape Irrigation System Replacement
 - Completion February 2025
 - Project # 2 – Storm Water Microbiological Study
 - Completed January 2021 (avian, deer, human to a lesser extent)

Regional Board's Ongoing Efforts

- \$2.5 million settlement
 - First step in returning to compliance
- Mule Creek State Prison Strategic Workgroup
 - Regional Board
 - State Board
 - US EPA



Steps Taken Towards Compliance

MCSP Stormwater (MS4 Program)

- April 2019 – MCSP enrolled into MS4 Permit
- August 2020 – Monitoring and Reporting Program issued
- February 2021 – Non-Storm Water Discharge Report submitted by CDCR
- September 2021 - Non-Storm Water Discharge Elimination Plan submitted by CDCR

Wastewater Permitting

- July 2020 – MCSP Report of Waste Discharge submitted
- October 2021 – Revised MRPs for MCSP and Lone Tertiary Plant/COGC

MCSP Wastewater Compliance and Enforcement

- October 2019 – CDCR Submitted Investigation Findings Report
- December 2020 – Board staff issued Technical Memo review of Findings Report
- January 2021 – CDCR Completed Storm Water Microbiological Study
- February 2021 – \$2.5 million Regional Board and CDCR Settlement

Next Steps Towards Compliance

MCSP Stormwater (MS4 Program)

- December 2021 – Outfall Monitoring Structures under construction
- June 2023 – CDCR required to complete development of storm water program
- February 2025 – Irrigation System Improvements scheduled to be complete

Wastewater Permitting

- Review data collected to characterize wastewater for the City of Lone and MCSP facilities
- Renew MCSP, City of Lone, and Sutter Creek/ARSA WDRs

MCSP Wastewater Compliance and Enforcement

- Sanitary Sewer System Compliance Evaluation

Mule Creek Watershed Public Briefing

Comments and Questions

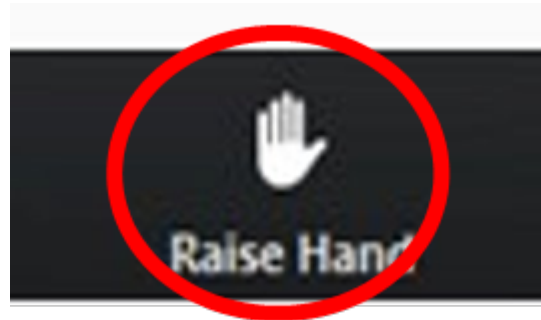


California Water Boards

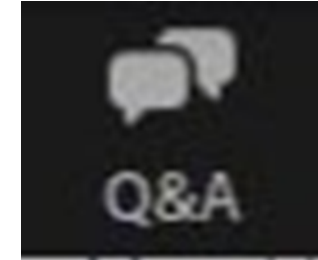
Participation Instructions

Everyone will remain muted until called upon

Verbal Comments



Q&A Function



Email

RB5S-Mule-Creek@Waterboards.ca.gov

Phone Commands

- *9 to raise hand
- *6 to mute/unmute



Additional Questions/Comments

Email to:

RB5S-Mule-Creek@waterboards.ca.gov

Mail:

Central Valley Regional Water Quality Control Board

Attention: John J. Baum

11020 Sun Center Dr. Suite 200, Rancho Cordova, CA 95670

Project Email Sign Up:

[Project Email Sign Up](#)

(https://www.waterboards.ca.gov/centralvalley/water_issues/enforcement/mule_creek_state_prison/)