



13846 Conference Center Drive ♦ Apple Valley, California 92307
Phone (760) 946-7000 ♦ Fax (760) 240-2642 ♦ www.mojavewater.org



October 23, 2014

Jeanine Townsend, Clerk to the Board
State Water Resources Control Board
1001 I Street, 24th Floor
Sacramento, CA 95814

**LETTER OF SUPPORT AND COOPERATION REGARDING THE
RECOMMENDATIONS IN THE DRAFT CALIFORNIA STATE WATER RESOURCES
CONTROL BOARD SAFE DRINKING WATER PLAN FOR CALIFORNIA**

Dear Jeanine Townsend,

The Mojave Water Agency (MWA) and Small Systems and Disadvantaged Communities (SS/DAC) Sub-Committee Chairperson supports the recommendations under the "Affordable, Safe Drinking Water for Disadvantaged Communities" section put forth in the Draft Safe Drinking Water Plan for California. MWA recognizes the exceptional drought that California is facing and is committed to working collaboratively with local, state, and federal entities to secure and provide safe drinking water for our region.

The Mojave Integrated Regional Water Management (IRWM) Plan identified providing support and assistance to SS/DAC as a high ranking priority. To respond to the stakeholders' request, a formalized *Small Systems Program* was implemented, consisting of the following two items:


- MWA contracted with California Rural Water Association (CRWA) to provide Technical, Financial, and Managerial (TMF) assistance to SS/DAC
- The SS/DAC Sub-Committee to the Mojave IRWM Plan was established to provide oversight and direction to the CRWA work with SS/DAC

Attached are the following documents:

- 1) SS/DAC Sub-Committee Work Plan that displays detailed SS/DAC and Waste Water Systems maps, CRWA/ Mojave IRWM Plan governance structure and the scope of work for FY2014/2015
- 2) The Mojave IRWM Plan adopted objectives that are ranked by priority and importance

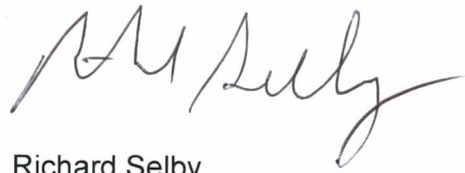
We look forward to working collaboratively throughout this process.

Sincerely,

A handwritten signature in blue ink, appearing to be 'Lance Eckhart', with a large, stylized flourish that loops back to the start of the signature.

Lance Eckhart, PG, CHG
Principal Hydrogeologist

Sincerely,

A handwritten signature in black ink, appearing to be 'Richard Selby', written in a cursive style.

Richard Selby
SS/DAC Sub-Committee Chairperson

Mojave IRWM Plan Adopted Objectives

Plan Objectives Arranged by Priority

	Tier 2	Tier 1	Tier 1
High			Obj. 1 - Balance Supply & Demand Obj. 3 - Maintain Stable GW Obj. 7 - Support & Assist DACs
	Tier 3	Tier 3	Tier 2
Medium		Obj. 8 - Improve Environmental Stewardship Obj. 13 - Establish Reliable Maintenance Funding Obj. 14 - Increase Use of Recycled Water	Obj. 2 - Improve Water Use Efficiency Obj. 4 - Reduce Reliance on Delta Obj. 5 - Optimize Use of Assets Obj. 9 - Improve Floodplain Mgmt. Obj. 10 - Preserve Water Quality Obj. 11 - Obtain Financial Assistance Obj. 12 - Improve Public Awareness
	Tier 4	Tier 3	Tier 2
Low	Obj. 6 - Prevent Land Subsidence		
	Low	Medium	High
	Importance		

Mojave IRWM Plan objectives were ranked on priority and importance during the early stages of the IRWM plan. Objective 7, supporting and assisting DAC's ranked as a high priority and importance.

IRWMP Implementation Support Team Subcommittee for
Small Systems and Disadvantaged Communities
Final Work Plan V3
August 1, 2014

BACKGROUND

The Mojave Water Agency adopted its 2014 Integrated Regional Water Management Plan on June 26, 2014. The Mojave Integrated Regional Water Management Plan (IRWM Plan, Plan) is a product of a long-term collaborative stakeholder process that began with the development of the first IRWM Plan adopted in 2005. This IRWM Plan updates and expands upon the original IRWM Plan, documents progress towards meeting IRWM Plan goals, identifies current regional water resource management needs and issues, and evaluates strategies for addressing the Region's challenges.

The Small Systems and Disadvantaged Communities Sub-Committee (SS/DAC) was formed specifically by the Project Team to focus on the needs of small water systems which include any agency involved in water resources (small systems) and economically disadvantaged communities (DACs) systems. The Project Team subsequently became the Implementation Support Team (IST) which now oversees the SS/DAC. The inclusion and participation of DACs is considered essential to the Mojave IRWM Plan process, as more than half of the Region qualifies as disadvantaged. DACs within the IRWM planning region included both rural and urban areas. However, not all small systems are in DAC communities.

Figure 1 outlines the relationships and hierarchy of the IRWMP governance structure currently in place concerning the SS/DAC.

The Small Systems and Disadvantaged Communities Sub-Committee (SS/DAC) operates under a Charter (Exhibit 1). The Charter outlines the purpose, representation, and duties of the subcommittee. Annually, the Subcommittee shall develop a Work Plan and Budget that define the intended outcomes, active tasks, and associated roles and responsibilities. The Subcommittee Work Plan will identify the task leader, contributors, reviewers, and people who need to be informed about each task. This plan will be submitted to the IST for review and approval. The Subcommittee will provide quarterly updates to the IST.

Figure 2 identifies small water systems and the boundaries of disadvantaged and severely disadvantaged communities within the MWA IRWMP region.

Figure 3 identifies small wastewater systems and the boundaries of disadvantaged and severely disadvantaged communities within the MWA IRWMP region.

2014 SS/DAC WORK PLAN AND ROLES/ RESPONSIBILITIES

The Mojave Water Agency Board of Directors approved the attached Scope-of-Work for the Fiscal Year 2014/2015 (Exhibit 2).

The Task Leader for FY2014/15 is Mr. Richard Selby. Mr. Selby will be the Technical Assistance Specialist for California Rural Water Association. Mr. Selby also chairs the SS/DAC.

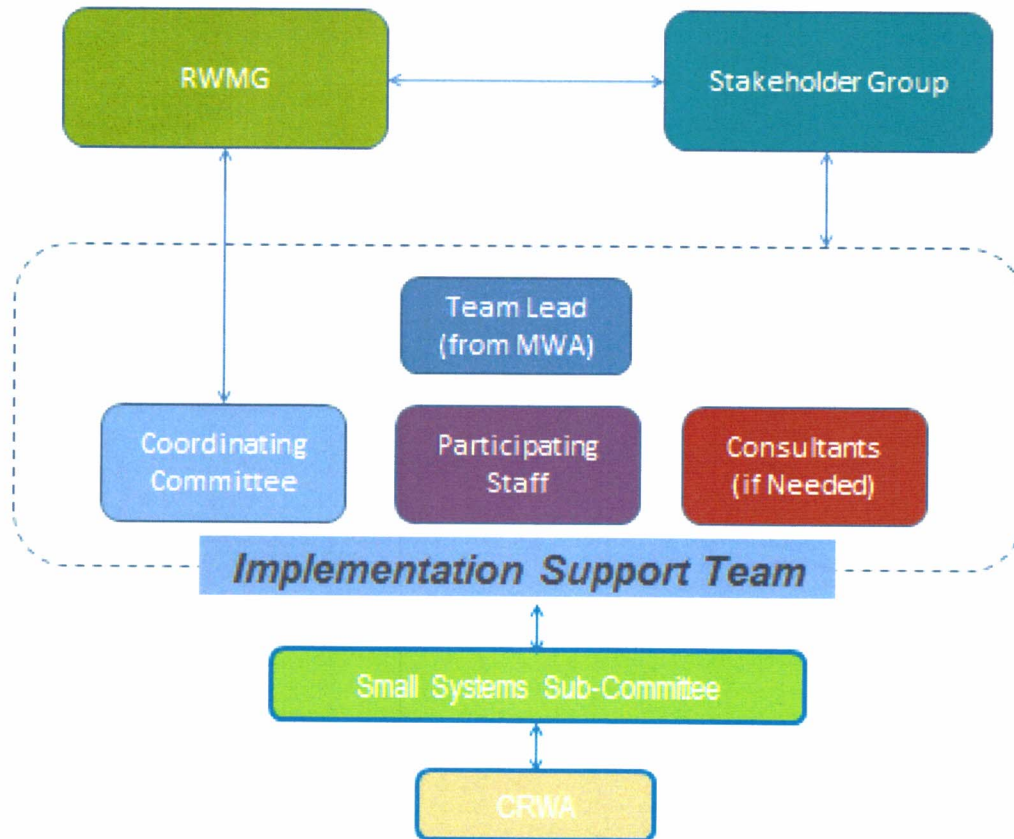
Contributors to the FY2014/15 Work Plan are the other members of the SS/DAC, the Implementation Support Team members and staff of the Mojave Water Agency.

The SS/DAC and staff of the Mojave Water Agency will have primary responsibility for reviewing the progress of work.

The SS/DAC will be reporting to those who need to stay informed including the water or wastewater system being assisted by the SS/DAC, the IST, MWA management and the MWA Board of Directors.

Figure 4 depicts the roles and responsibilities outlined above and the work flow processes the SS/DAC will follow.

Figure 1 – MWA IRWMP Governance Structure



Source: MWA 2014

Exhibit 1

**Implementation Support Team Subcommittee for
Small Systems and Economically Disadvantaged Communities
Charter**

The Implementation Support Team (IST) was created as part of the Mojave Integrated Regional Water Management (IRWM) Plan to provide ongoing oversight for the implementation of the Plan. The IST has decided to establish a subcommittee to address the needs of small water systems which include any agency involved in water resources (Small Systems) and economically disadvantaged communities (DACs).

Now therefore, the Implementation Support Team and Small Systems/DACs subcommittee members agree that:

1. The Small Systems and Economically Disadvantaged Communities Subcommittee shall, to the best of its ability, represent the broad geography and diverse needs of small water systems and economically disadvantaged communities throughout the IRWM Plan boundaries.

2. The Subcommittee shall consist of at least one (1) member appointed from the IST who shall serve as the chairperson of the subcommittee, one (1) vice-chair that shall be selected by the chair, two (2) members of the Mojave Water Agency staff and one (1) representative from the California Rural Water Association subject to available support funds. The Subcommittee shall also include enough additional members to be representative of the Small Systems and DACs throughout the IRWM planning area. A complete list of subcommittee members will be given to the IST.

3. Annually, the Subcommittee shall develop a Work Plan and Budget that define the intended outcomes, active tasks, and associated roles and responsibilities. The Subcommittee Work Plan will identify the task leader, contributors, reviewers, and people who need to be informed about each task. This plan will be submitted to the IST for review and approval. The Subcommittee will provide quarterly updates to the IST.

4. Changes to this Charter can be made from time to time based on mutual agreement.

Executed on April 24, 2014


IST Project Manager – Lance Eckhart

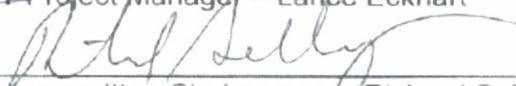

Subcommittee Chairperson – Richard Selby

Exhibit 2

EXPANDED TECHNICAL SUPPORT APPROACH

CRWA will have a part-time project manager and a dedicated technician in the MWA region. This will allow CRWA to have a comprehensive technical assistance, and training program in the high desert area. This option will include 4 water-related operational and/or management educational sessions per year that relate to the highest level of need in the region. All support outreach will be coordinated through MWA, and the IRWMP via the small systems sub-committee.

Task #	Task	Task Description
A.1	Needs Assessments	Conduct focused water system needs assessments for disadvantaged communities (DACs) within the planning region in order to help identify and document the most pressing water related issues.
B.3	Training/workshops	Attend and help facilitate the workshops conducted by CRWA.
C.1	Technical Assistance	Conduct generalized Technical Assistance with DACs in the region.
D.1	Engineering	As needed, provide guidance and information to engineers in order to help them complete the funding applications.
D.2	Corporate Review	Provide guidance to lawyers in facilitating the corporate reviews, as needed.
E.1	Misc. Technical Support	As needed, assist with facilitating the use of outside technical support
F.1	Pre-App Support	Assist systems in completing funding pre-application for state and/or federal funding programs
G	Admin. – Meetings	As needed, attend meetings with the Mojave Water Agency and other invested parties
G.1	Admin. – Reporting	Support monthly reports on activities conducted during the month and the progress made with each system; as well as, provide monthly timesheets

Figure 2 – Small Water Systems and Disadvantaged Communities in the MWA IRWMP Region

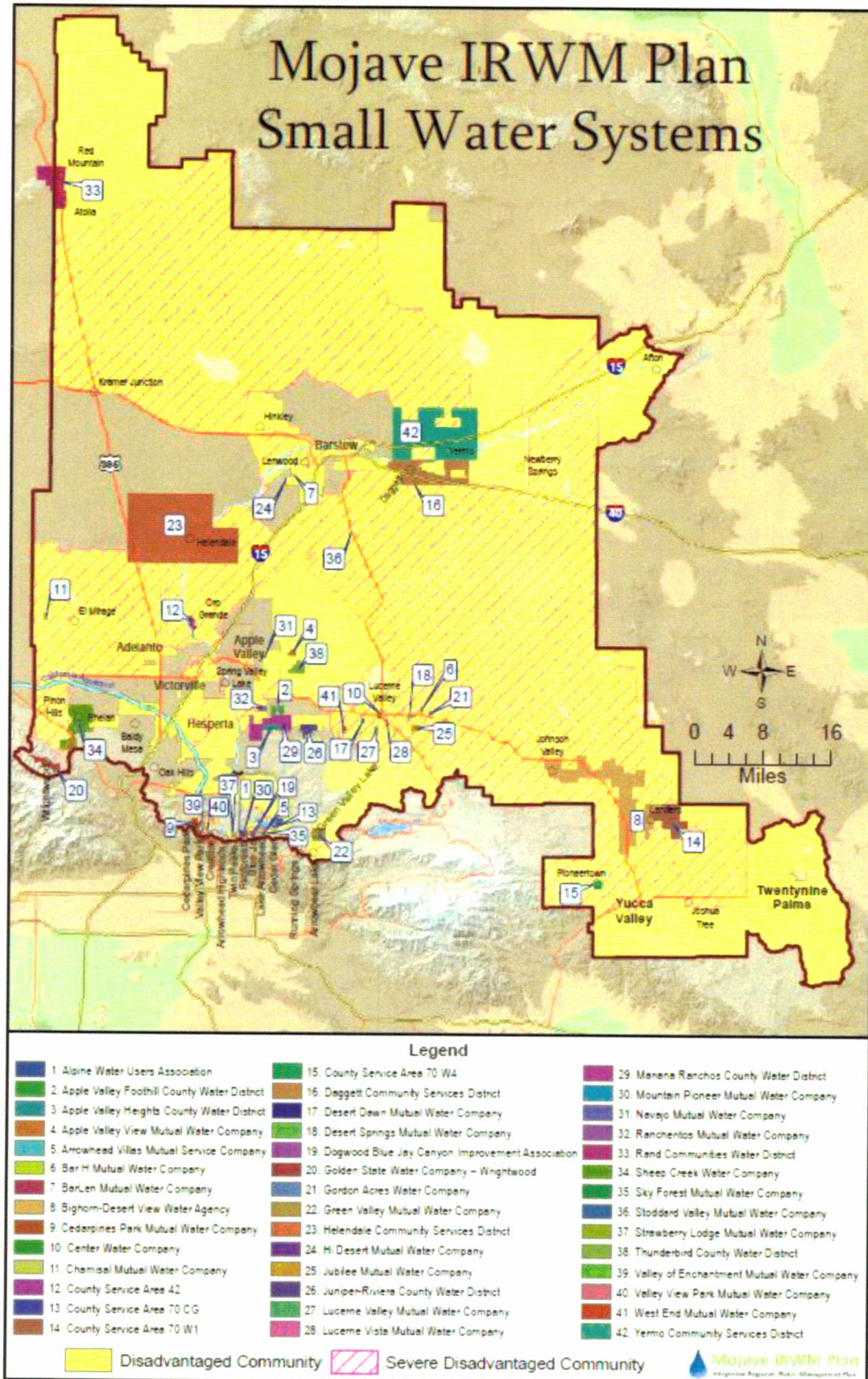
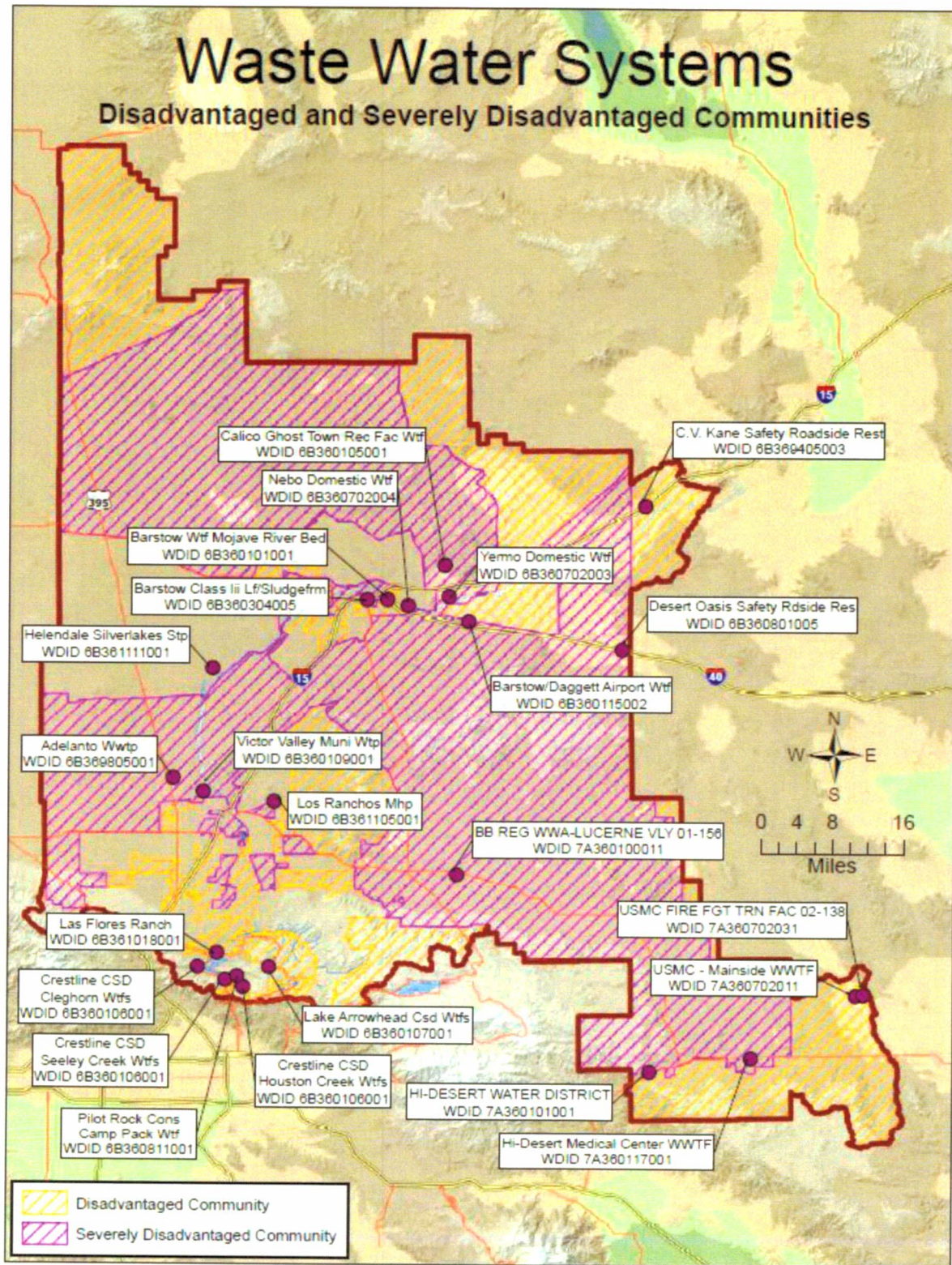
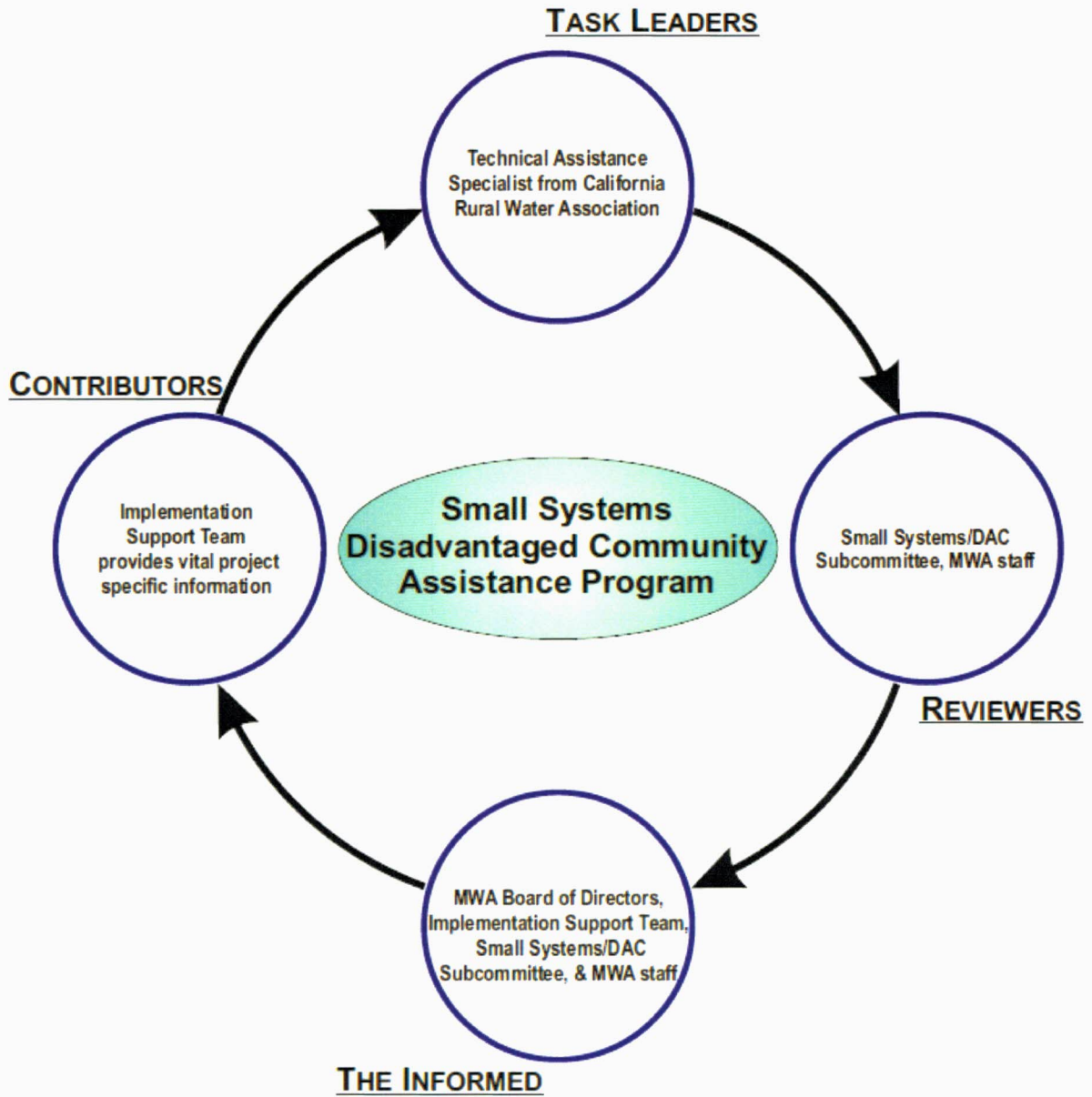


Figure 3 - Small Wastewater Systems and Disadvantaged Communities in the MWA IRWMP Region



Source: MWA 8/5/2014

Figure 4 – Roles/Responsibilities and Work Flow Diagram



Source: MWA 2014