

# Heavenly Epic Discovery Project

Bud Amorfini  
Engineering Geologist

- Project summary
- CEQA lead agency
- Draft EIR comments
- Water quality issues
- Heavenly presentation

# Project Summary

- **Ski Area Recreational Opportunity Enhancement Act, November 2011** – policy to support year-round natural resource-based recreation at ski areas on public lands
- **Epic Discovery Project** – proposal to integrate summer recreation and interpretive venues at existing ski area facilities at Heavenly Mountain Resort
- **New attractions** – includes a variety of attractions located both in and outside of California and the Lake Tahoe Basin

# Project Summary

- **Activity Centers**

- Adventure Peak (top of gondola - California)
- East Peak Basin (Nevada)
- Sky Meadows Basin (California)
- Mountain wide



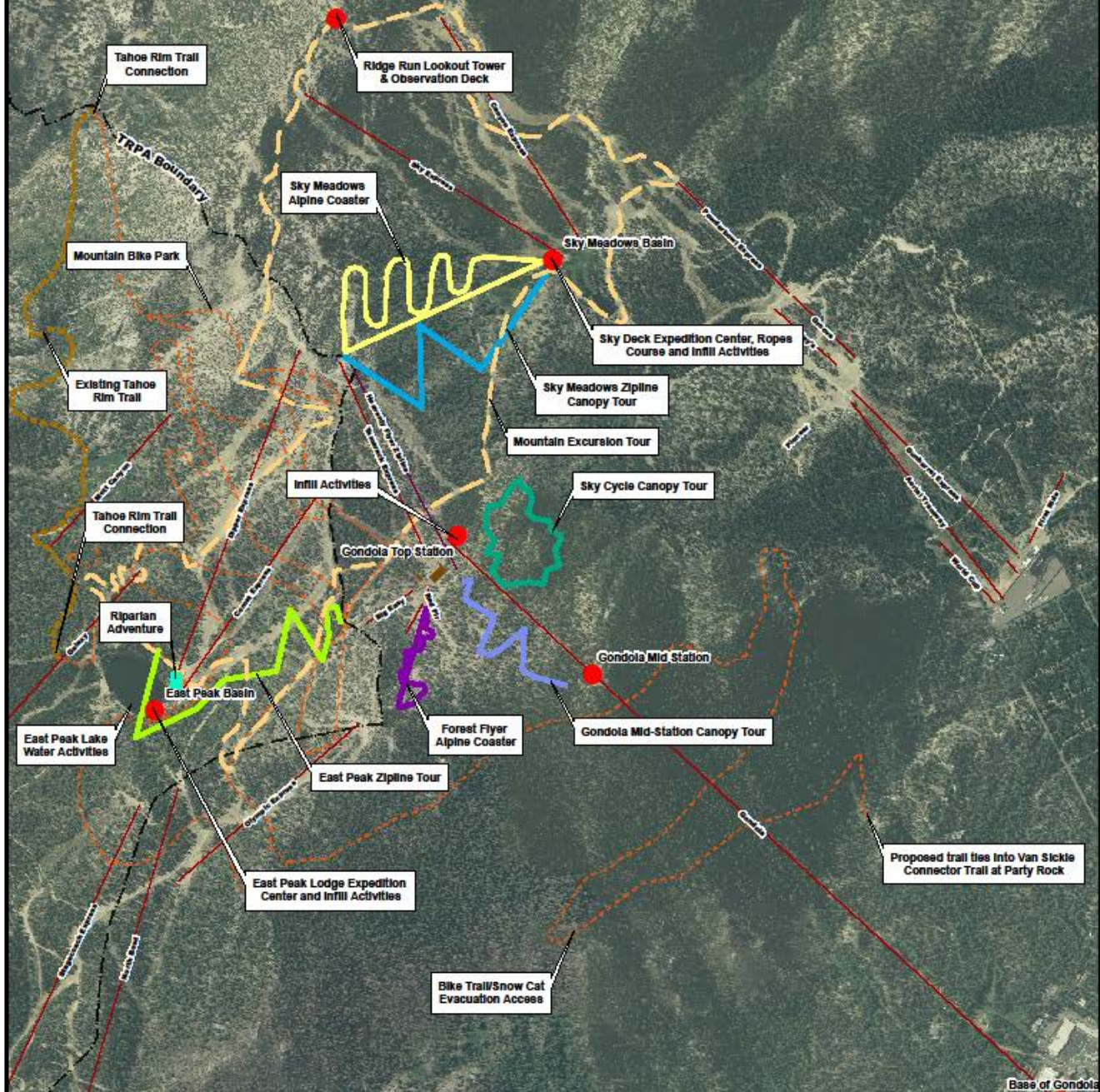


# Project Summary

- **California Activities**
  - ropes/challenge courses
  - zip line canopy tours
  - sky cycle canopy tour
  - alpine coaster
  - lookout tower and observation deck
  - multi-use public trails (Panorama Trail)
  - interpretive centers/information
  - Mountain excursion tour
  - emergency gondola snow cat evacuation route (winter only)



# Proposed Epic Discovery Activities June 2013





# CEQA Compliance

- **Joint Environmental Document - EIR/EIS/EIS**
  - Water Board, Forest Service, TRPA
- **Draft document circulated for 60-day public comment period ending October 27, 2014**
- **Water Board to consider certifying Final EIR in May 2015**
- **Water Board also to consider adopting updated WDRs in May 2015**

# Draft EIR Comments

- **Project Support**

- USEPA
- Tahoe Douglas Fire Protection District
- Business community
- Mountain biking and recreation advocates
- Schools
- Private individuals



# Draft EIR Comments

- **Concerns**

- **Van Sickle Bi-state Park impacts** (trail conflicts, parking, restrooms) - NV Conservation & Natural Resources, CTC
- **Flora and fauna impacts** (migratory birds, yellow-legged frogs, white bark pines, bears) - CDFW, NV Conservation & Natural Resources, Sierra Club
- **Public safety and emergency response** (emergency vehicles access and evacuation) – Tahoe Douglas Fire Protection District
- **Inconsistent with natural environment** (alpine coaster, traffic, noise) – Sierra Club and private individuals



# Water Quality Issues

- **TMDL for Heavenly Valley Creek**

- WQ parameters (generally good)
- Stream Condition Inventory (good & stable)
- Benthic Macroinvertebrate (BMI) health (poor in Sky Meadows)

- **Monitoring Locations**

- Near Patsy's lift (high gradient)
- LTBMU property line (high gradient)
- Sky Meadows (low gradient)
- Reference stream (Hidden Valley Creek – high gradient)

# Water Quality Issues

- **SEZ Disturbance**

- Sky Meadows ropes course designed to avoid all direct SEZ impacts
- 168 square feet SEZ disturbance from zip line crossings
- SEZ mitigation from banked SEZ restoration credits

- **Erosion/sedimentation control**

- Barriers/access controls to minimize indirect impacts
- 23 erosion hot spots identified in EIR for mitigation
- Updated WDRs to include ongoing/improved monitoring and erosion control requirements
- Additional substrate and WQ monitoring parameters for Sky Meadows



# Questions?

