

## Appendix C: Supporting Tables and Figures

---

### Tables Supporting Chapter 2 & 3

Application Levels for Recommended Strategy Milestone Analysis  
Application Levels for Delayed Innovation Analysis  
SCG Baseline to Pollutant Budget Scaling Factors

### Tables and Figures Supporting Chapter 4

Land Use Composition for All Jurisdictions  
Fine Sediment Load by Land Use Category for All Jurisdictions  
Relative Land Area by Land Use Category for All Jurisdictions  
Approach I: Allowable Load and Percent Reduction for Fine Sediment Particles  
Approach I: Allowable Load and Percent Reduction for Phosphorus  
Approach I: Allowable Load and Percent Reductions for Nitrogen  
Approach II: Allowable Load and Percent Reductions for Fine Sediment Particles  
Approach II: Allowable Load and Percent Reductions for Fine Phosphorus  
Approach II: Allowable Load and Percent Reductions for Fine Nitrogen  
Approach III: Allowable Load and Percent Reductions for Fine Sediment Particles  
Approach III: Allowable Load and Percent Reductions for Fine Phosphorus  
Approach III: Allowable Load and Percent Reductions for Fine Nitrogen  
Approach IV: Background and Anthropogenic Loads for Fine Sediment Particles  
Approach IV: Background and Anthropogenic Loads Fine Phosphorus  
Approach IV: Background and Anthropogenic Loads Nitrogen  
Approach IV: Allowable Load and Percent Reductions for Fine Sediment Particles  
Approach IV: Allowable Load and Percent Reductions for Phosphorus  
Approach IV: Allowable Load and Percent Reductions for Nitrogen  
Approach Comparison for All Jurisdictions (Allowable Fine Sediment Particle Loads)  
Approach Comparison for All Jurisdictions (Percent Reductions from Baseline)  
Basin-wide and Source Category Percent Load Reductions Resulting from Milestone Analysis  
Load Duration Curves for Fine Sediment, Total Nitrogen and Total Phosphorus

**Table C-1. Application Level of Each Pollutant Control for the Milestone Analysis of the Recommended Strategy (Supports Section 3.4)**

Source Category	Setting	Treatment Tier	First Milestone	Second Milestone	Third Milestone	Fourth Milestone
Atmospheric	Less than 0.2 Km from Lake Tahoe (Setting 1)	Mobile Tier 2	-	-	-	-
		Mobile Tier 3	-	-	-	-
		Non-mob. Tier 2	20%	30%	30%	20%
		Non-mob. Tier 3	10%	20%	50%	60%
	0.2 Km to 1 Km from Lake Tahoe (Setting 2)	Mobile Tier 2	-	-	-	-
		Mobile Tier 3	-	-	-	-
		Non-mob. Tier 2	20%	30%	30%	20%
		Non-mob. Tier 3	10%	20%	50%	60%
	1 to 3 Km from Lake Tahoe (Setting 3)	Mobile Tier 2	-	-	-	-
		Mobile Tier 3	-	-	-	-
		Non-mob. Tier 2	10%	30%	30%	20%
		Non-mob. Tier 3	10%	20%	50%	60%
	Remainder of Tahoe Basin (Setting 4)	Mobile Tier 2	-	-	-	-
		Mobile Tier 3	-	-	-	-
		Non-mob. Tier 2	10%	30%	30%	20%
		Non-mob. Tier 3	10%	20%	50%	60%
Forest Upland Base Package	Unpaved roads and trails (Setting A)	Tier 1	30%	50%	60%	50%
		Tier 2	10%	10%	10%	20%
		Tier 3	-	-	10%	10%
	Ski slopes, campgrounds, bare slopes (Setting B)	Tier 1	30%	50%	60%	50%
		Tier 2	10%	10%	10%	20%
		Tier 3	-	-	10%	10%
	Typical Tahoe Forest (Setting C)	Tier 2	2%	4%	5%	5%
		Tier 3	-	-	-	-
	Stream Channel Erosion	Blackwood Creek	Tier 2	20%	40%	80%
Upper Truckee River		Tier 2	20%	40%	80%	80%
Ward Creek		Tier 2	20%	40%	80%	80%
Urban Uplands	Concentrated Coverage, Moderate Slopes	Tier 1	20%	40%	20%	-
		Tier 2	10%	10%	-	20%
		Tier 3	-	10%	50%	60%
	Concentrated Coverage, Steep Slopes	Tier 1	20%	30%	20%	-
		Tier 2	-	10%	-	10%
		Tier 3	-	10%	50%	50%
	Dispersed Coverage, Moderate Slopes	Tier 1	20%	40%	40%	20%
		Tier 2	10%	10%	40%	60%
	Dispersed Coverage, Steep Slopes	Tier 1	20%	30%	30%	10%
		Tier 2	-	-	-	50%

**Table C-2. Application Level of Each Pollutant Control for the Delayed Innovation Analysis of the Recommended Strategy (Supports Section 3.4)**

Source Category	Setting	Treatment Tier	First Milestone	Second Milestone	Third Milestone	Fourth Milestone
Atmospheric	Less than 0.2 Km from Lake Tahoe (Setting 1)	Mobile Tier 2	-	-	-	-
		Mobile Tier 3	-	-	-	-
		Non-mob. Tier 2	40%	60%	70%	40%
		Non-mob. Tier 3	-	-	10%	40%
	0.2 Km to 1 Km from Lake Tahoe (Setting 2)	Mobile Tier 2	-	-	-	-
		Mobile Tier 3	-	-	-	-
		Non-mob. Tier 2	40%	60%	70%	40%
		Non-mob. Tier 3	-	-	10%	40%
	1 to 3 Km from Lake Tahoe (Setting 3)	Mobile Tier 2	-	-	-	-
		Mobile Tier 3	-	-	-	-
		Non-mob. Tier 2	40%	60%	70%	40%
		Non-mob. Tier 3	-	-	10%	40%
	Remainder of Tahoe Basin (Setting 4)	Mobile Tier 2	-	-	-	-
		Mobile Tier 3	-	-	-	-
		Non-mob. Tier 2	40%	60%	70%	40%
		Non-mob. Tier 3	-	-	10%	40%
Forest Upland Base Package	Unpaved roads and trails (Setting A)	Tier 1	30%	50%	60%	50%
		Tier 2	10%	10%	10%	20%
		Tier 3	-	-	10%	10%
	Ski slopes, campgrounds, bare slopes (Setting B)	Tier 1	30%	50%	60%	50%
		Tier 2	10%	10%	10%	20%
		Tier 3	-	-	10%	10%
	Typical Tahoe Forest (Setting C)	Tier 2	2%	4%	5%	5%
		Tier 3	-	-	-	-
	Stream Channel Erosion	Blackwood Creek	Tier 2	20%	40%	80%
Upper Truckee River		Tier 2	20%	40%	80%	80%
Ward Creek		Tier 2	20%	40%	80%	80%
Urban Uplands	Concentrated Coverage, Moderate Slopes	Tier 1	30%	60%	70%	40%
		Tier 2	-	-	10%	30%
		Tier 3	-	-	-	10%
	Concentrated Coverage, Steep Slopes	Tier 1	30%	60%	70%	40%
		Tier 2	-	-	10%	30%
		Tier 3	-	-	-	10%
	Dispersed Coverage, Moderate Slopes	Tier 1	30%	60%	70%	50%
		Tier 2	-	-	10%	30%
	Dispersed Coverage, Steep Slopes	Tier 1	30%	70%	70%	50%
		Tier 2	-	-	10%	30%

\*Values represent the percent of total areas treated with pollutant controls. A hyphen indicates that this treatment is not recommended.

**Table C-3. SCG Baseline to Pollutant Budget Scaling Factors (Supports Section 3.3)**

SCG	Name	SCG baseline	TMDL Budget	Scaling factor
ATM	Particles	75	75	1
ATM	TN	218	218	1
ATM	TP	7	7	1
ATM	Fines	1138.662243	1138.662243	1
ATM	Flow	0	0	1
FU	Particles	39.26269847	41	1.044248144
FU	TN	10.641	62	1.044248144
FU	TP	3.539	12	1.044248144
FU	Fines	4543.97	4745.032238	1.044248144
FU	Flow	44484445	44484445	1
SC	Particles	16.2939	17	1.043335236
SC	TN	0	0	1
SC	TP	0.5550736	0.579127845	1.043335236
SC	Fines	3651.8	3810.051614	1.043335236
SC	Flow	0	0	1
UG	Particles	222.8766287	348	1.561401938
UG	TN	50.7276672	63	1.241925826
UG	TP	13.32132108	18	1.351217338
UG	Fines	2974.682514	4644.675041	1.561401938
UG	Flow	30398373.14	30398373.14	1

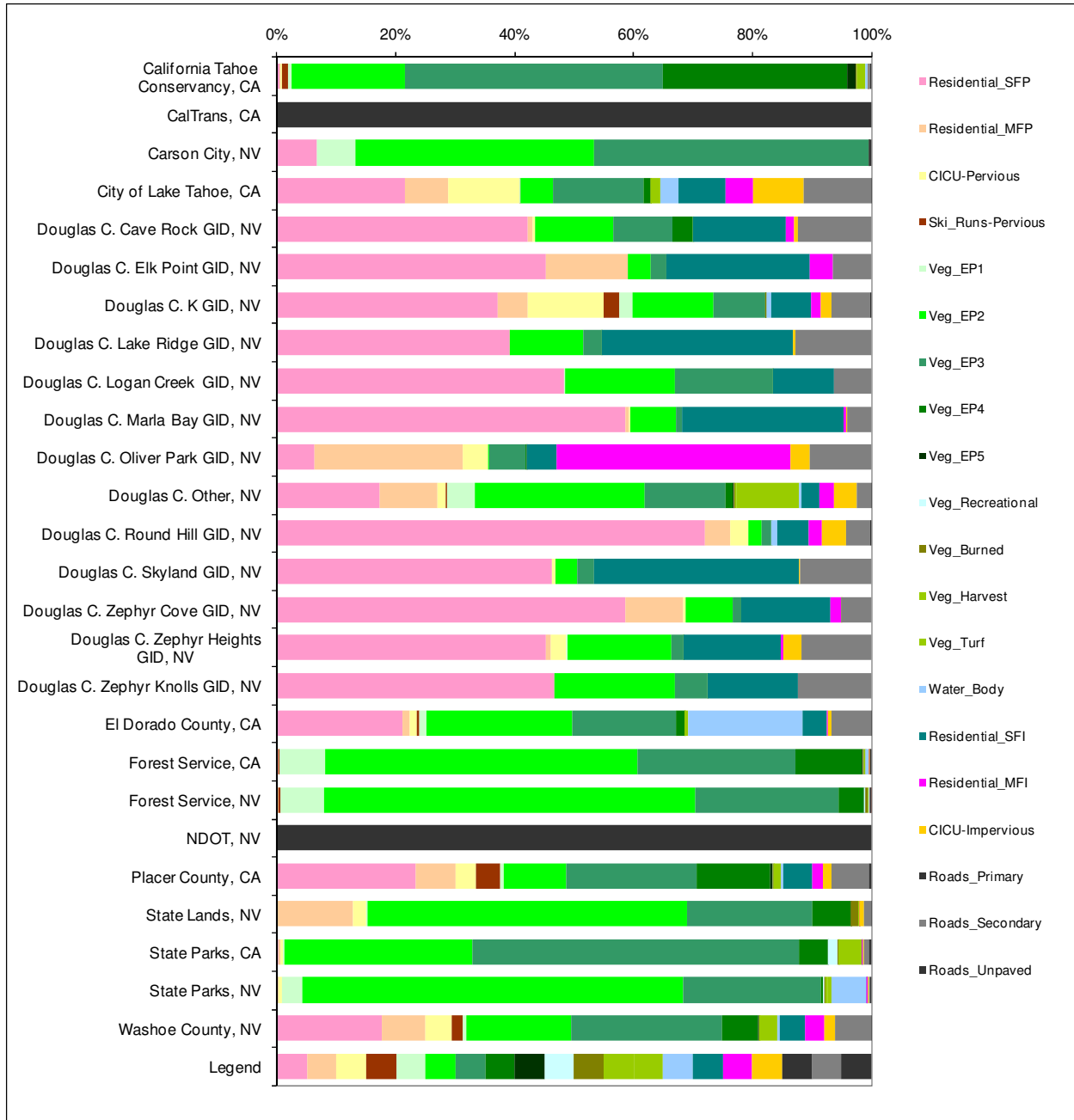
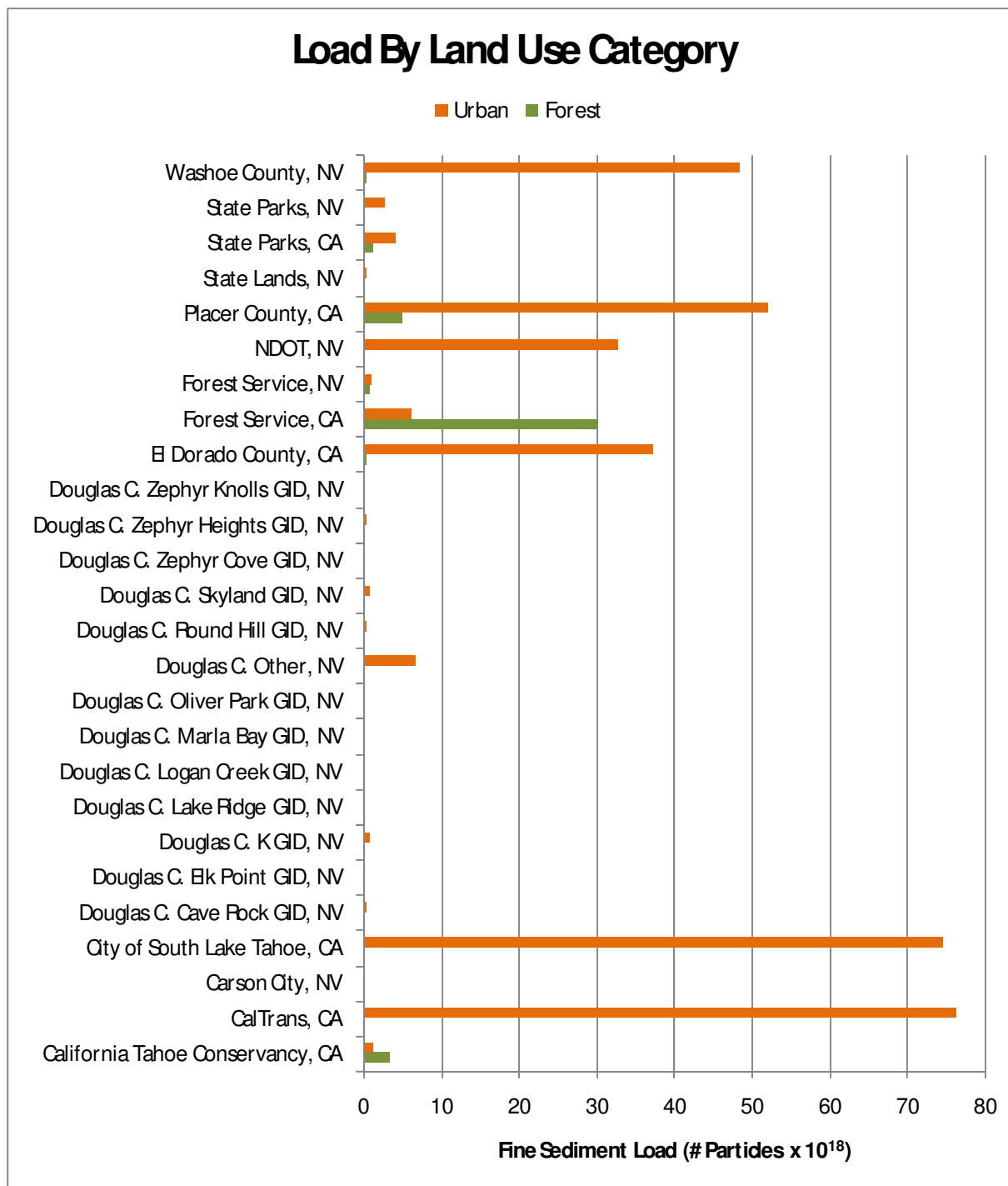
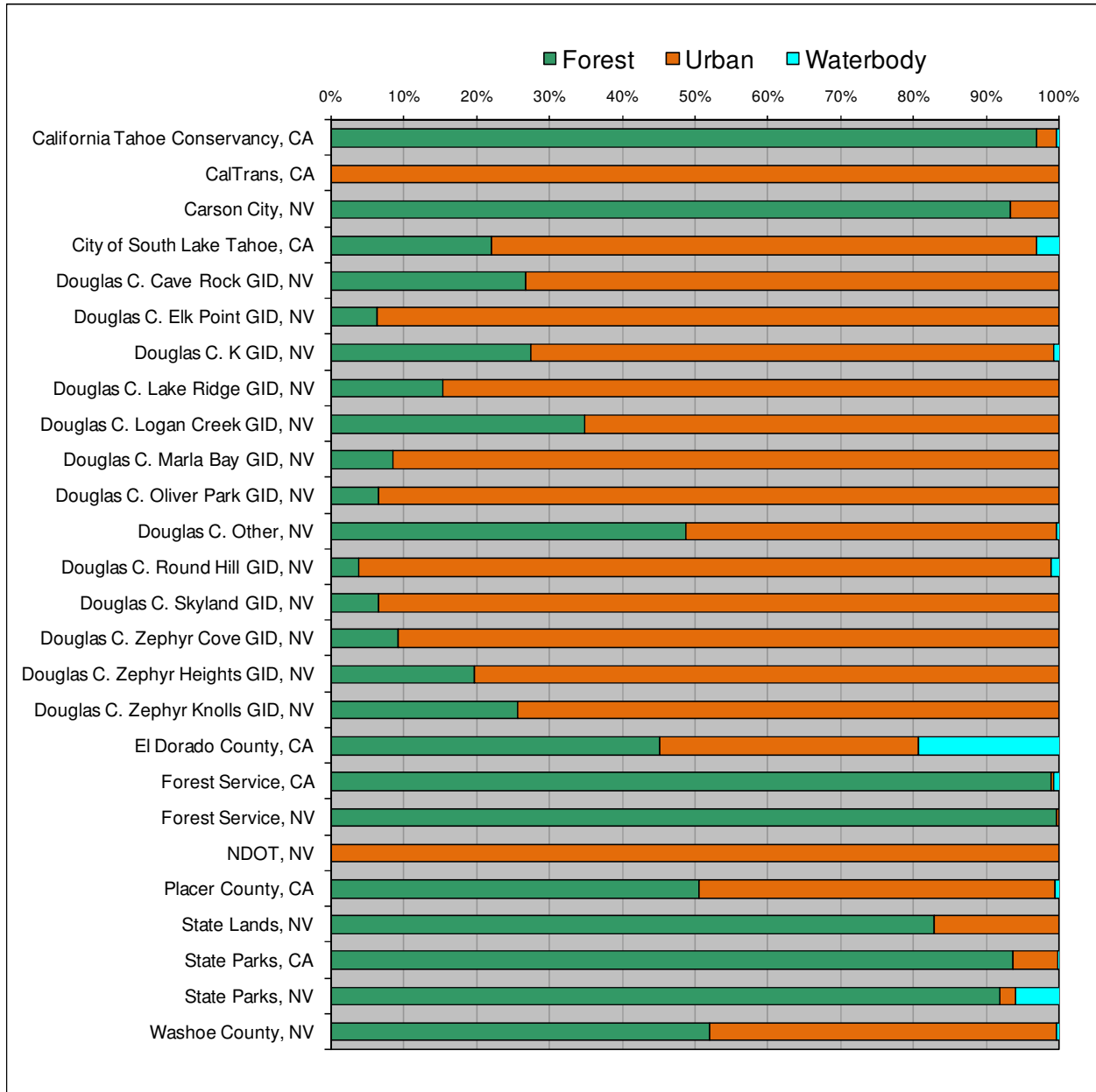


Figure C-1. A comparison of land use composition among all jurisdictions.



**Figure C-2. The portion of each jurisdiction's fine sediment particle load categorized as forested or urban.**



**Figure C-3. The relative portion of each jurisdiction's land use, categorized as forest, urban, and waterbody.**

**Table C-4. Fine Sediment Particle Jurisdictional Percent Reductions and Allowable Loads at Each Milestone for Approach I: Predominant Load Source Approach**

Jurisdiction	% Reduction from jurisdiction baseline <sup>1</sup>					Allowable load (particles x10 <sup>18</sup> )					
	Milestone #1	Milestone #2	Milestone #3	Milestone #4	Load target	Baseline load	Milestone #1	Milestone #2	Milestone #3	Milestone #4	Load target
California Tahoe Conservancy, CA	5.7%	8.8%	11.7%	11.8%	20.0%	4.76E+18	4.49E+18	4.34E+18	4.21E+18	4.20E+18	3.81E+18
CalTrans, CA	10.3%	21.2%	33.9%	42.1%	71.2%	7.64E+19	6.85E+19	6.02E+19	5.05E+19	4.42E+19	2.20E+19
Carson City, NV	5.7%	8.8%	11.7%	11.8%	20.0%	1.00E+16	9.47E+15	9.16E+15	8.87E+15	8.85E+15	8.03E+15
South Lake Tahoe, CA	10.3%	21.2%	33.9%	42.1%	71.2%	7.46E+19	6.69E+19	5.88E+19	4.93E+19	4.32E+19	2.15E+19
Cave Rock GID, NV	10.3%	21.2%	33.9%	42.1%	71.2%	3.80E+17	3.41E+17	2.99E+17	2.51E+17	2.20E+17	1.09E+17
Elk Point GID, NV	10.3%	21.2%	33.9%	42.1%	71.2%	1.62E+17	1.46E+17	1.28E+17	1.07E+17	9.39E+16	4.67E+16
KGID, NV	10.3%	21.2%	33.9%	42.1%	71.2%	7.85E+17	7.04E+17	6.18E+17	5.19E+17	4.55E+17	2.26E+17
Lake Ridge GID, NV	10.3%	21.2%	33.9%	42.1%	71.2%	2.13E+17	1.91E+17	1.68E+17	1.41E+17	1.23E+17	6.12E+16
Logan Creek GID, NV	10.3%	21.2%	33.9%	42.1%	71.2%	5.09E+16	4.57E+16	4.01E+16	3.37E+16	2.95E+16	1.47E+16
Marla Bay GID, NV	10.3%	21.2%	33.9%	42.1%	71.2%	1.33E+17	1.19E+17	1.05E+17	8.78E+16	7.69E+16	3.82E+16
Oliver Park GID, NV	10.3%	21.2%	33.9%	42.1%	71.2%	8.12E+16	7.29E+16	6.40E+16	5.37E+16	4.70E+16	2.34E+16
Douglas C. Other, NV	10.3%	21.2%	33.9%	42.1%	71.2%	6.63E+18	5.95E+18	5.22E+18	4.38E+18	3.84E+18	1.91E+18
Round Hill GID, NV	10.3%	21.2%	33.9%	42.1%	71.2%	3.63E+17	3.26E+17	2.86E+17	2.40E+17	2.10E+17	1.04E+17
Skyland GID, NV	10.3%	21.2%	33.9%	42.1%	71.2%	7.13E+17	6.40E+17	5.62E+17	4.72E+17	4.13E+17	2.05E+17
Zephyr Cove GID, NV	10.3%	21.2%	33.9%	42.1%	71.2%	1.03E+17	9.25E+16	8.13E+16	6.82E+16	5.97E+16	2.97E+16
Zephyr Heights GID, NV	10.3%	21.2%	33.9%	42.1%	71.2%	4.77E+17	4.28E+17	3.76E+17	3.16E+17	2.76E+17	1.37E+17
Zephyr Knolls GID, NV	10.3%	21.2%	33.9%	42.1%	71.2%	1.14E+17	1.02E+17	8.95E+16	7.51E+16	6.58E+16	3.27E+16
El Dorado County, CA	10.3%	21.2%	33.9%	42.1%	71.2%	3.76E+19	3.37E+19	2.96E+19	2.49E+19	2.18E+19	1.08E+19
Forest Service, CA	5.7%	8.8%	11.7%	11.8%	20.0%	3.65E+19	3.44E+19	3.33E+19	3.22E+19	3.22E+19	2.92E+19
Forest Service, NV	5.7%	8.8%	11.7%	11.8%	20.0%	1.95E+18	1.84E+18	1.77E+18	1.72E+18	1.72E+18	1.56E+18
NDOT, NV	10.3%	21.2%	33.9%	42.1%	71.2%	3.28E+19	2.94E+19	2.59E+19	2.17E+19	1.90E+19	9.44E+18
Placer County, CA	10.3%	21.2%	33.9%	42.1%	71.2%	5.69E+19	5.10E+19	4.48E+19	3.76E+19	3.29E+19	1.64E+19
State Lands, NV	5.7%	8.8%	11.7%	11.8%	20.0%	3.89E+17	3.67E+17	3.55E+17	3.43E+17	3.43E+17	3.11E+17
State Parks, CA	5.7%	8.8%	11.7%	11.8%	20.0%	5.29E+18	4.99E+18	4.82E+18	4.67E+18	4.66E+18	4.23E+18
State Parks, NV	5.7%	8.8%	11.7%	11.8%	20.0%	2.83E+18	2.67E+18	2.58E+18	2.50E+18	2.50E+18	2.26E+18
Washoe County, NV	10.3%	21.2%	33.9%	42.1%	71.2%	4.88E+19	4.38E+19	3.85E+19	3.23E+19	2.83E+19	1.41E+19

<sup>1</sup> These percent reductions are based on the jurisdictional baselines, not the Basin-wide values presented in Table 4-7.



**Table C-5. Total Phosphorus Jurisdictional Percent Reductions and Allowable Loads at Each Milestone for Approach I: Predominant Load Source Approach**

Jurisdiction	% Reduction from jurisdiction baseline <sup>2</sup>					Allowable load (Metric Tonnes)					
	Milestone #1	Milestone #2	Milestone #3	Milestone #4	Load target	Baseline load	Milestone #1	Milestone #2	Milestone #3	Milestone #4	Load target
California Tahoe Conservancy, CA	0.7%	1.0%	1.5%	1.5%	2.6%	5.09E+02	5.06E+02	5.04E+02	5.02E+02	5.01E+02	4.96E+02
CalTrans, CA	7.0%	13.6%	20.6%	27.4%	46.3%	2.85E+03	2.65E+03	2.47E+03	2.27E+03	2.07E+03	1.53E+03
Carson City, NV	0.7%	1.0%	1.5%	1.5%	2.6%	2.04E+01	2.02E+01	2.02E+01	2.00E+01	2.00E+01	1.98E+01
South Lake Tahoe, CA	7.0%	13.6%	20.6%	27.4%	46.3%	3.61E+03	3.36E+03	3.12E+03	2.87E+03	2.62E+03	1.94E+03
Cave Rock GID, NV	7.0%	13.6%	20.6%	27.4%	46.3%	4.20E+01	3.91E+01	3.63E+01	3.34E+01	3.05E+01	2.26E+01
Elk Point GID, NV	7.0%	13.6%	20.6%	27.4%	46.3%	2.07E+01	1.93E+01	1.79E+01	1.65E+01	1.50E+01	1.11E+01
KGID, NV	7.0%	13.6%	20.6%	27.4%	46.3%	1.14E+02	1.06E+02	9.81E+01	9.02E+01	8.25E+01	6.10E+01
Lake Ridge GID, NV	7.0%	13.6%	20.6%	27.4%	46.3%	2.75E+01	2.56E+01	2.38E+01	2.19E+01	2.00E+01	1.48E+01
Logan Creek GID, NV	7.0%	13.6%	20.6%	27.4%	46.3%	7.89E+00	7.34E+00	6.82E+00	6.27E+00	5.73E+00	4.24E+00
Marla Bay GID, NV	7.0%	13.6%	20.6%	27.4%	46.3%	1.97E+01	1.83E+01	1.70E+01	1.56E+01	1.43E+01	1.06E+01
Oliver Park GID, NV	7.0%	13.6%	20.6%	27.4%	46.3%	8.56E+00	7.95E+00	7.39E+00	6.80E+00	6.21E+00	4.59E+00
Douglas C. Other, NV	7.0%	13.6%	20.6%	27.4%	46.3%	5.80E+02	5.39E+02	5.01E+02	4.61E+02	4.21E+02	3.12E+02
Round Hill GID, NV	7.0%	13.6%	20.6%	27.4%	46.3%	4.46E+01	4.15E+01	3.86E+01	3.55E+01	3.24E+01	2.40E+01
Skyland GID, NV	7.0%	13.6%	20.6%	27.4%	46.3%	9.27E+01	8.62E+01	8.01E+01	7.36E+01	6.73E+01	4.98E+01
Zephyr Cove GID, NV	7.0%	13.6%	20.6%	27.4%	46.3%	1.36E+01	1.27E+01	1.18E+01	1.08E+01	9.91E+00	7.32E+00
Zephyr Heights GID, NV	7.0%	13.6%	20.6%	27.4%	46.3%	4.66E+01	4.33E+01	4.03E+01	3.70E+01	3.38E+01	2.50E+01
Zephyr Knolls GID, NV	7.0%	13.6%	20.6%	27.4%	46.3%	1.35E+01	1.26E+01	1.17E+01	1.07E+01	9.82E+00	7.26E+00
El Dorado County, CA	7.0%	13.6%	20.6%	27.4%	46.3%	2.85E+03	2.65E+03	2.47E+03	2.27E+03	2.07E+03	1.53E+03
Forest Service, CA	0.7%	1.0%	1.5%	1.5%	2.6%	8.00E+03	7.94E+03	7.92E+03	7.88E+03	7.87E+03	7.79E+03
Forest Service, NV	0.7%	1.0%	1.5%	1.5%	2.6%	9.45E+02	9.38E+02	9.35E+02	9.31E+02	9.30E+02	9.20E+02
NDOT, NV	7.0%	13.6%	20.6%	27.4%	46.3%	1.15E+03	1.07E+03	9.90E+02	9.11E+02	8.33E+02	6.16E+02
Placer County, CA	7.0%	13.6%	20.6%	27.4%	46.3%	5.41E+03	5.03E+03	4.67E+03	4.30E+03	3.93E+03	2.90E+03
State Lands, NV	0.7%	1.0%	1.5%	1.5%	2.6%	3.69E+01	3.66E+01	3.65E+01	3.63E+01	3.63E+01	3.59E+01
State Parks, CA	0.7%	1.0%	1.5%	1.5%	2.6%	7.67E+02	7.62E+02	7.60E+02	7.56E+02	7.55E+02	7.47E+02
State Parks, NV	0.7%	1.0%	1.5%	1.5%	2.6%	3.39E+02	3.36E+02	3.35E+02	3.34E+02	3.34E+02	3.30E+02
Washoe County, NV	7.0%	13.6%	20.6%	27.4%	46.3%	2.48E+03	2.31E+03	2.14E+03	1.97E+03	1.80E+03	1.33E+03

<sup>2</sup> These percent reductions are based on the jurisdictional baselines, not the Basin-wide values presented in Table 4-7.

**Table C-6. Total Nitrogen Jurisdictional Percent Reductions and Allowable Loads at Each Milestone for Approach I: Predominant Load Source Approach**

Jurisdiction	% Reduction from jurisdiction baseline <sup>3</sup>					Allowable load (Metric Tonnes)					
	Milestone #1	Milestone #2	Milestone #3	Milestone #4	Load target	Baseline load	Milestone #1	Milestone #2	Milestone #3	Milestone #4	Load target
California Tahoe Conservancy, CA	0.1%	0.2%	0.3%	0.3%	0.4%	2.21E+03	2.20E+03	2.20E+03	2.20E+03	2.20E+03	2.20E+03
CalTrans, CA	7.5%	14.3%	19.4%	29.8%	50.5%	5.22E+03	4.83E+03	4.48E+03	4.21E+03	3.66E+03	2.59E+03
Carson City, NV	0.1%	0.2%	0.3%	0.3%	0.4%	1.26E+02	1.26E+02	1.26E+02	1.26E+02	1.26E+02	1.25E+02
South Lake Tahoe, CA	7.5%	14.3%	19.4%	29.8%	50.5%	1.63E+04	1.50E+04	1.39E+04	1.31E+04	1.14E+04	8.05E+03
Cave Rock GID, NV	7.5%	14.3%	19.4%	29.8%	50.5%	1.17E+02	1.08E+02	1.00E+02	9.41E+01	8.19E+01	5.78E+01
Elk Point GID, NV	7.5%	14.3%	19.4%	29.8%	50.5%	5.48E+01	5.06E+01	4.69E+01	4.42E+01	3.84E+01	2.71E+01
KGID, NV	7.5%	14.3%	19.4%	29.8%	50.5%	8.22E+02	7.60E+02	7.04E+02	6.63E+02	5.77E+02	4.07E+02
Lake Ridge GID, NV	7.5%	14.3%	19.4%	29.8%	50.5%	7.36E+01	6.81E+01	6.31E+01	5.94E+01	5.17E+01	3.65E+01
Logan Creek GID, NV	7.5%	14.3%	19.4%	29.8%	50.5%	2.56E+01	2.37E+01	2.20E+01	2.07E+01	1.80E+01	1.27E+01
Marla Bay GID, NV	7.5%	14.3%	19.4%	29.8%	50.5%	4.99E+01	4.62E+01	4.28E+01	4.03E+01	3.50E+01	2.47E+01
Oliver Park GID, NV	7.5%	14.3%	19.4%	29.8%	50.5%	6.95E+01	6.43E+01	5.96E+01	5.61E+01	4.88E+01	3.44E+01
Douglas C. Other, NV	7.5%	14.3%	19.4%	29.8%	50.5%	2.08E+03	1.93E+03	1.79E+03	1.68E+03	1.46E+03	1.03E+03
Round Hill GID, NV	7.5%	14.3%	19.4%	29.8%	50.5%	2.32E+02	2.15E+02	1.99E+02	1.87E+02	1.63E+02	1.15E+02
Skyland GID, NV	7.5%	14.3%	19.4%	29.8%	50.5%	2.41E+02	2.22E+02	2.06E+02	1.94E+02	1.69E+02	1.19E+02
Zephyr Cove GID, NV	7.5%	14.3%	19.4%	29.8%	50.5%	3.63E+01	3.36E+01	3.11E+01	2.93E+01	2.55E+01	1.80E+01
Zephyr Heights GID, NV	7.5%	14.3%	19.4%	29.8%	50.5%	1.36E+02	1.25E+02	1.16E+02	1.09E+02	9.51E+01	6.71E+01
Zephyr Knolls GID, NV	7.5%	14.3%	19.4%	29.8%	50.5%	3.76E+01	3.48E+01	3.23E+01	3.03E+01	2.64E+01	1.86E+01
El Dorado County, CA	7.5%	14.3%	19.4%	29.8%	50.5%	1.44E+04	1.33E+04	1.24E+04	1.16E+04	1.01E+04	7.14E+03
Forest Service, CA	0.1%	0.2%	0.3%	0.3%	0.4%	4.57E+04	4.57E+04	4.57E+04	4.56E+04	4.56E+04	4.55E+04
Forest Service, NV	0.1%	0.2%	0.3%	0.3%	0.4%	4.35E+03	4.34E+03	4.34E+03	4.34E+03	4.34E+03	4.33E+03
NDOT, NV	7.5%	14.3%	19.4%	29.8%	50.5%	1.88E+03	1.73E+03	1.61E+03	1.51E+03	1.32E+03	9.28E+02
Placer County, CA	7.5%	14.3%	19.4%	29.8%	50.5%	1.64E+04	1.52E+04	1.40E+04	1.32E+04	1.15E+04	8.11E+03
State Lands, NV	0.1%	0.2%	0.3%	0.3%	0.4%	1.31E+02	1.31E+02	1.31E+02	1.30E+02	1.30E+02	1.30E+02
State Parks, CA	0.1%	0.2%	0.3%	0.3%	0.4%	3.67E+03	3.66E+03	3.66E+03	3.66E+03	3.66E+03	3.65E+03
State Parks, NV	0.1%	0.2%	0.3%	0.3%	0.4%	1.39E+03	1.38E+03	1.38E+03	1.38E+03	1.38E+03	1.38E+03
Washoe County, NV	7.5%	14.3%	19.4%	29.8%	50.5%	9.23E+03	8.53E+03	7.91E+03	7.44E+03	6.47E+03	4.57E+03

<sup>3</sup> These percent reductions are based on the jurisdictional baselines, not the Basin-wide values presented in Table 4-7.

**Table C-7. Fine Sediment Particle Jurisdictional Percent Reductions and Allowable Loads at Each Milestone for Approach II: Weighted Load Source Approach**

Jurisdiction	% Reduction from jurisdiction baseline <sup>4</sup>					Allowable load (particles x10 <sup>18</sup> )					
	Milestone #1	Milestone #2	Milestone #3	Milestone #4	Load target	Baseline load	Milestone #1	Milestone #2	Milestone #3	Milestone #4	Load target
California Tahoe Conservancy, CA	7.0%	12.3%	18.0%	20.3%	34.4%	4.76E+18	4.43E+18	4.18E+18	3.91E+18	3.79E+18	3.12E+18
CalTrans, CA	10.3%	21.2%	33.9%	42.1%	71.2%	7.64E+19	6.85E+19	6.02E+19	5.05E+19	4.42E+19	2.20E+19
Carson City, NV	6.6%	11.3%	16.2%	18.0%	30.5%	1.00E+16	9.38E+15	8.90E+15	8.41E+15	8.24E+15	6.98E+15
South Lake Tahoe, CA	10.3%	21.2%	33.9%	42.1%	71.2%	7.46E+19	6.69E+19	5.88E+19	4.93E+19	4.32E+19	2.15E+19
Cave Rock GID, NV	10.3%	21.2%	33.8%	42.0%	71.2%	3.80E+17	3.41E+17	2.99E+17	2.51E+17	2.20E+17	1.10E+17
Elk Point GID, NV	10.3%	21.2%	33.9%	42.1%	71.2%	1.62E+17	1.46E+17	1.28E+17	1.07E+17	9.39E+16	4.67E+16
KGID, NV	10.3%	21.2%	33.8%	42.0%	71.2%	7.85E+17	7.04E+17	6.19E+17	5.19E+17	4.55E+17	2.26E+17
Lake Ridge GID, NV	10.3%	21.2%	33.9%	42.1%	71.2%	2.13E+17	1.91E+17	1.68E+17	1.41E+17	1.23E+17	6.12E+16
Logan Creek GID, NV	10.3%	21.2%	33.8%	42.0%	71.1%	5.09E+16	4.57E+16	4.01E+16	3.37E+16	2.95E+16	1.47E+16
Marla Bay GID, NV	10.3%	21.2%	33.9%	42.1%	71.2%	1.33E+17	1.19E+17	1.05E+17	8.78E+16	7.69E+16	3.82E+16
Oliver Park GID, NV	10.3%	21.2%	33.9%	42.1%	71.2%	8.12E+16	7.29E+16	6.40E+16	5.37E+16	4.70E+16	2.34E+16
Douglas C. Other, NV	10.3%	21.2%	33.8%	42.0%	71.0%	6.63E+18	5.95E+18	5.22E+18	4.39E+18	3.85E+18	1.92E+18
Round Hill GID, NV	10.3%	21.2%	33.8%	42.0%	71.0%	3.63E+17	3.26E+17	2.86E+17	2.41E+17	2.11E+17	1.05E+17
Skyland GID, NV	10.3%	21.2%	33.9%	42.1%	71.2%	7.13E+17	6.40E+17	5.62E+17	4.72E+17	4.13E+17	2.05E+17
Zephyr Cove GID, NV	10.3%	21.2%	33.9%	42.1%	71.2%	1.03E+17	9.25E+16	8.13E+16	6.82E+16	5.97E+16	2.97E+16
Zephyr Heights GID, NV	10.3%	21.2%	33.9%	42.1%	71.2%	4.77E+17	4.28E+17	3.76E+17	3.16E+17	2.77E+17	1.37E+17
Zephyr Knolls GID, NV	10.3%	21.2%	33.8%	42.1%	71.2%	1.14E+17	1.02E+17	8.95E+16	7.51E+16	6.58E+16	3.27E+16
El Dorado County, CA	10.2%	21.1%	33.7%	41.8%	70.8%	3.76E+19	3.37E+19	2.97E+19	2.49E+19	2.19E+19	1.10E+19
Forest Service, CA	6.4%	10.9%	15.5%	17.0%	28.8%	3.65E+19	3.42E+19	3.25E+19	3.09E+19	3.03E+19	2.60E+19
Forest Service, NV	8.1%	15.4%	23.6%	28.0%	47.4%	1.95E+18	1.79E+18	1.65E+18	1.49E+18	1.40E+18	1.02E+18
NDOT, NV	10.3%	21.2%	33.9%	42.1%	71.2%	3.28E+19	2.94E+19	2.59E+19	2.17E+19	1.90E+19	9.44E+18
Placer County, CA	9.9%	20.2%	32.0%	39.5%	66.9%	5.69E+19	5.12E+19	4.54E+19	3.87E+19	3.44E+19	1.88E+19
State Lands, NV	10.1%	20.7%	32.9%	40.8%	69.1%	3.89E+17		3.09E+17	2.61E+17	2.30E+17	1.20E+17
State Parks, CA	9.2%	18.4%	28.8%	35.2%	59.5%	5.29E+18	4.80E+18	4.32E+18	3.77E+18	3.43E+18	2.14E+18
State Parks, NV	10.1%	20.9%	33.2%	41.2%	69.7%	2.83E+18	2.54E+18	2.24E+18	1.89E+18	1.67E+18	8.57E+17
Washoe County, NV	10.2%	21.1%	33.7%	41.8%	70.8%	4.88E+19	4.38E+19	3.85E+19	3.24E+19	2.84E+19	1.43E+19

<sup>4</sup> These percent reductions are based on the jurisdictional baselines, not the Basin-wide values presented in Table 4-7.

**Table C-8. Total Phosphorus Jurisdictional Percent Reductions and Allowable Loads at Each Milestone for Approach II: Weighted Load Source Approach**

Jurisdiction	% Reduction from jurisdiction baseline <sup>5</sup>					Allowable load (Metric Tonnes)					
	Milestone #1	Milestone #2	Milestone #3	Milestone #4	Load target	Baseline load	Milestone #1	Milestone #2	Milestone #3	Milestone #4	Load target
California Tahoe Conservancy, CA	2.4%	4.4%	6.6%	8.5%	14.3%	5.09E+02	4.97E+02	4.87E+02	4.76E+02	4.66E+02	4.36E+02
CalTrans, CA	7.0%	13.6%	20.6%	27.4%	46.3%	2.85E+03	2.65E+03	2.47E+03	2.27E+03	2.07E+03	1.53E+03
Carson City, NV	2.4%	4.5%	6.8%	8.7%	14.7%	2.04E+01	1.99E+01	1.94E+01	1.90E+01	1.86E+01	1.74E+01
South Lake Tahoe, CA	7.0%	13.6%	20.5%	27.2%	46.1%	3.61E+03	3.36E+03	3.12E+03	2.87E+03	2.63E+03	1.95E+03
Cave Rock GID, NV	6.9%	13.4%	20.2%	26.9%	45.6%	4.20E+01	3.91E+01	3.64E+01	3.35E+01	3.07E+01	2.29E+01
Elk Point GID, NV	7.0%	13.6%	20.5%	27.3%	46.1%	2.07E+01	1.93E+01	1.79E+01	1.65E+01	1.51E+01	1.12E+01
KGID, NV	6.8%	13.2%	19.9%	26.4%	44.7%	1.14E+02	1.06E+02	9.86E+01	9.10E+01	8.35E+01	6.27E+01
Lake Ridge GID, NV	7.0%	13.5%	20.4%	27.2%	46.0%	2.75E+01	2.56E+01	2.38E+01	2.19E+01	2.01E+01	1.49E+01
Logan Creek GID, NV	6.8%	13.1%	19.8%	26.3%	44.6%	7.89E+00	7.36E+00	6.86E+00	6.33E+00	5.81E+00	4.37E+00
Marla Bay GID, NV	7.0%	13.5%	20.5%	27.2%	46.1%	1.97E+01	1.83E+01	1.70E+01	1.56E+01	1.43E+01	1.06E+01
Oliver Park GID, NV	7.0%	13.6%	20.5%	27.3%	46.2%	8.56E+00	7.96E+00	7.39E+00	6.80E+00	6.22E+00	4.61E+00
Douglas C. Other, NV	6.7%	12.9%	19.4%	25.8%	43.7%	5.80E+02	5.42E+02	5.06E+02	4.67E+02	4.30E+02	3.27E+02
Round Hill GID, NV	7.0%	13.5%	20.5%	27.2%	46.1%	4.46E+01	4.15E+01	3.86E+01	3.55E+01	3.25E+01	2.41E+01
Skyland GID, NV	7.0%	13.6%	20.5%	27.3%	46.2%	9.27E+01	8.62E+01	8.01E+01	7.37E+01	6.74E+01	4.99E+01
Zephyr Cove GID, NV	7.0%	13.5%	20.4%	27.2%	46.0%	1.36E+01	1.27E+01	1.18E+01	1.09E+01	9.94E+00	7.37E+00
Zephyr Heights GID, NV	6.9%	13.4%	20.3%	27.0%	45.7%	4.66E+01	4.34E+01	4.03E+01	3.71E+01	3.40E+01	2.53E+01
Zephyr Knolls GID, NV	6.9%	13.4%	20.2%	26.9%	45.6%	1.35E+01	1.26E+01	1.17E+01	1.08E+01	9.88E+00	7.36E+00
El Dorado County, CA	6.7%	13.0%	19.6%	26.0%	44.0%	2.85E+03	2.66E+03	2.48E+03	2.30E+03	2.11E+03	1.60E+03
Forest Service, CA	1.3%	2.2%	3.3%	3.9%	6.7%	8.00E+03	7.89E+03	7.82E+03	7.74E+03	7.68E+03	7.46E+03
Forest Service, NV	1.1%	1.9%	2.8%	3.4%	5.7%	9.45E+02	9.34E+02	9.27E+02	9.18E+02	9.13E+02	8.91E+02
NDOT, NV	7.0%	13.6%	20.6%	27.4%	46.3%	1.15E+03	1.07E+03	9.90E+02	9.11E+02	8.33E+02	6.16E+02
Placer County, CA	6.1%	11.7%	17.7%	23.5%	39.8%	5.41E+03	5.08E+03	4.77E+03	4.45E+03	4.14E+03	3.25E+03
State Lands, NV	5.0%	9.6%	14.5%	19.1%	32.4%	3.69E+01	3.50E+01	3.33E+01	3.15E+01	2.98E+01	2.49E+01
State Parks, CA	4.0%	7.5%	11.3%	14.9%	25.1%	7.67E+02	7.37E+02	7.10E+02	6.80E+02	6.53E+02	5.74E+02
State Parks, NV	3.1%	5.7%	8.6%	11.2%	18.9%	3.39E+02	3.28E+02	3.19E+02	3.10E+02	3.01E+02	2.75E+02
Washoe County, NV	6.6%	12.7%	19.2%	25.5%	43.2%	2.48E+03	2.32E+03	2.17E+03	2.00E+03	1.85E+03	1.41E+03

<sup>5</sup> These percent reductions are based on the jurisdictional baselines, not the Basin-wide values presented in Table 4-7.

**Table C-9. Total Nitrogen Jurisdictional Percent Reductions and Allowable Loads at Each Milestone for Approach II: Weighted Load Source Approach**

Jurisdiction	% Reduction from jurisdiction baseline <sup>6</sup>					Allowable load (Metric Tonnes)					
	Milestone #1	Milestone #2	Milestone #3	Milestone #4	Load target	Baseline load	Milestone #1	Milestone #2	Milestone #3	Milestone #4	Load target
California Tahoe Conservancy, CA	1.8%	3.3%	4.5%	6.8%	11.6%	2.21E+03	2.17E+03	2.13E+03	2.11E+03	2.05E+03	1.95E+03
CalTrans, CA	7.5%	14.3%	19.4%	29.8%	50.5%	5.22E+03	4.83E+03	4.48E+03	4.21E+03	3.66E+03	2.59E+03
Carson City, NV	1.2%	2.2%	3.1%	4.6%	7.8%	1.26E+02	1.24E+02	1.23E+02	1.22E+02	1.20E+02	1.16E+02
South Lake Tahoe, CA	7.5%	14.2%	19.2%	29.6%	50.1%	1.63E+04	1.51E+04	1.40E+04	1.31E+04	1.15E+04	8.12E+03
Cave Rock GID, NV	7.3%	13.9%	18.9%	29.1%	49.3%	1.17E+02	1.08E+02	1.00E+02	9.46E+01	8.27E+01	5.92E+01
Elk Point GID, NV	7.5%	14.2%	19.3%	29.7%	50.2%	5.48E+01	5.07E+01	4.70E+01	4.42E+01	3.85E+01	2.73E+01
KGID, NV	7.4%	14.0%	19.0%	29.2%	49.5%	8.22E+02	7.61E+02	7.07E+02	6.66E+02	5.82E+02	4.15E+02
Lake Ridge GID, NV	7.4%	14.1%	19.2%	29.5%	49.9%	7.36E+01	6.82E+01	6.32E+01	5.95E+01	5.19E+01	3.69E+01
Logan Creek GID, NV	7.1%	13.5%	18.4%	28.3%	47.9%	2.56E+01	2.38E+01	2.22E+01	2.09E+01	1.84E+01	1.34E+01
Marla Bay GID, NV	7.5%	14.2%	19.2%	29.6%	50.1%	4.99E+01	4.62E+01	4.29E+01	4.03E+01	3.52E+01	2.49E+01
Oliver Park GID, NV	7.5%	14.3%	19.3%	29.8%	50.4%	6.95E+01	6.43E+01	5.96E+01	5.61E+01	4.88E+01	3.45E+01
Douglas C. Other, NV	7.1%	13.4%	18.2%	28.0%	47.4%	2.08E+03	1.94E+03	1.80E+03	1.70E+03	1.50E+03	1.09E+03
Round Hill GID, NV	7.5%	14.2%	19.3%	29.7%	50.2%	2.32E+02	2.15E+02	1.99E+02	1.88E+02	1.63E+02	1.16E+02
Skyland GID, NV	7.5%	14.2%	19.3%	29.7%	50.3%	2.41E+02	2.23E+02	2.06E+02	1.94E+02	1.69E+02	1.20E+02
Zephyr Cove GID, NV	7.4%	14.1%	19.2%	29.5%	49.9%	3.63E+01	3.36E+01	3.12E+01	2.94E+01	2.56E+01	1.82E+01
Zephyr Heights GID, NV	7.4%	14.0%	19.0%	29.2%	49.5%	1.36E+02	1.26E+02	1.17E+02	1.10E+02	9.59E+01	6.85E+01
Zephyr Knolls GID, NV	7.3%	13.9%	18.9%	29.1%	49.3%	3.76E+01	3.49E+01	3.24E+01	3.05E+01	2.67E+01	1.91E+01
El Dorado County, CA	6.9%	13.2%	17.9%	27.5%	46.6%	1.44E+04	1.34E+04	1.25E+04	1.19E+04	1.05E+04	7.71E+03
Forest Service, CA	0.6%	1.1%	1.5%	2.2%	3.7%	4.57E+04	4.55E+04	4.53E+04	4.51E+04	4.48E+04	4.41E+04
Forest Service, NV	0.5%	0.9%	1.2%	1.8%	3.0%	4.35E+03	4.33E+03	4.31E+03	4.29E+03	4.27E+03	4.22E+03
NDOT, NV	7.5%	14.3%	19.4%	29.8%	50.5%	1.88E+03	1.73E+03	1.61E+03	1.51E+03	1.32E+03	9.28E+02
Placer County, CA	6.6%	12.5%	17.0%	26.2%	44.3%	1.64E+04	1.53E+04	1.43E+04	1.36E+04	1.21E+04	9.13E+03
State Lands, NV	5.0%	9.5%	12.9%	19.8%	33.5%	1.31E+02	1.24E+02	1.18E+02	1.14E+02	1.05E+02	8.69E+01
State Parks, CA	2.9%	5.5%	7.5%	11.5%	19.5%	3.67E+03	3.56E+03	3.46E+03	3.39E+03	3.24E+03	2.95E+03
State Parks, NV	1.9%	3.6%	4.9%	7.5%	12.7%	1.39E+03	1.36E+03	1.34E+03	1.32E+03	1.28E+03	1.21E+03
Washoe County, NV	6.8%	13.0%	17.6%	27.1%	45.9%	9.23E+03	8.60E+03	8.03E+03	7.60E+03	6.72E+03	4.99E+03

<sup>6</sup> These percent reductions are based on the jurisdictional baselines, not the Basin-wide values presented in Table 4-7.

**Table C-10. Fine Sediment Particle Jurisdictional Percent Reductions and Allowable Loads at Each Milestone for Approach III: Setting Specific Approach**

Jurisdiction	% Reduction from jurisdiction baseline <sup>7</sup>					Allowable load (particles x10 <sup>18</sup> )					
	Milestone #1	Milestone #2	Milestone #3	Milestone #4	Load target	Baseline load	Milestone #1	Milestone #2	Milestone #3	Milestone #4	Load target
California Tahoe Conservancy, CA	-	-	23.3%	-	-	4.76E+18	-	-	3.65E+18	-	-
CalTrans, CA	-	-	30.8%	-	-	7.64E+19	-	-	5.29E+19	-	-
Carson City, NV	-	-	9.2%	-	-	1.00E+16	-	-	9.11E+15	-	-
South Lake Tahoe, CA	-	-	42.4%	-	-	7.46E+19	-	-	4.30E+19	-	-
Cave Rock GID, NV	-	-	7.0%	-	-	3.80E+17	-	-	3.54E+17	-	-
Elk Point GID, NV	-	-	7.0%	-	-	1.62E+17	-	-	1.51E+17	-	-
KGID, NV	-	-	16.3%	-	-	7.85E+17	-	-	6.57E+17	-	-
Lake Ridge GID, NV	-	-	35.4%	-	-	2.13E+17	-	-	1.37E+17	-	-
Logan Creek GID, NV	-	-	7.0%	-	-	5.09E+16	-	-	4.74E+16	-	-
Marla Bay GID, NV	-	-	35.8%	-	-	1.33E+17	-	-	8.53E+16	-	-
Oliver Park GID, NV	-	-	21.5%	-	-	8.12E+16	-	-	6.37E+16	-	-
Douglas C. Other, NV	-	-	32.3%	-	-	6.63E+18	-	-	4.49E+18	-	-
Round Hill GID, NV	-	-	16.5%	-	-	3.63E+17	-	-	3.03E+17	-	-
Skyland GID, NV	-	-	35.8%	-	-	7.13E+17	-	-	4.58E+17	-	-
Zephyr Cove GID, NV	-	-	35.7%	-	-	1.03E+17	-	-	6.63E+16	-	-
Zephyr Heights GID, NV	-	-	34.7%	-	-	4.77E+17	-	-	3.12E+17	-	-
Zephyr Knolls GID, NV	-	-	35.4%	-	-	1.14E+17	-	-	7.33E+16	-	-
El Dorado County, CA	-	-	31.6%	-	-	3.76E+19	-	-	2.57E+19	-	-
Forest Service, CA	-	-	13.7%	-	-	3.65E+19	-	-	3.15E+19	-	-
Forest Service, NV	-	-	18.0%	-	-	1.95E+18	-	-	1.60E+18	-	-
NDOT, NV	-	-	24.3%	-	-	3.28E+19	-	-	2.48E+19	-	-
Placer County, CA	-	-	34.2%	-	-	5.69E+19	-	-	3.74E+19	-	-
State Lands, NV	-	-	26.3%	-	-	3.89E+17	-	-	2.87E+17	-	-
State Parks, CA	-	-	31.7%	-	-	5.29E+18	-	-	3.61E+18	-	-
State Parks, NV	-	-	29.5%	-	-	2.83E+18	-	-	2.00E+18	-	-
Washoe County, NV	-	-	34.5%	-	-	4.88E+19	-	-	3.20E+19	-	-

<sup>7</sup> These percent reductions are based on the jurisdictional baselines, not the Basin-wide values presented in Table 4-7.

**Table C-11. Total Phosphorus Jurisdictional Percent Reductions and Allowable Loads at Each Milestone for Approach III: Setting Specific Approach**

Jurisdiction	% Reduction from jurisdiction baseline <sup>8</sup>					Allowable load (Metric Tonnes)					
	Milestone #1	Milestone #2	Milestone (#3)	Milestone #4	Load target	Baseline load	Milestone #1	Milestone #2	Milestone (#3)	Milestone #4	Load target
California Tahoe Conservancy, CA	-	-	6.2%	-	-	5.09E+02	-	-	4.78E+02	-	-
CalTrans, CA	-	-	15.6%	-	-	2.85E+03	-	-	2.41E+03	-	-
Carson City, NV	-	-	0.2%	-	-	2.04E+01	-	-	2.03E+01	-	-
South Lake Tahoe, CA	-	-	25.9%	-	-	3.61E+03	-	-	2.67E+03	-	-
Cave Rock GID, NV	-	-	4.9%	-	-	4.20E+01	-	-	3.99E+01	-	-
Elk Point GID, NV	-	-	5.1%	-	-	2.07E+01	-	-	1.97E+01	-	-
KGID, NV	-	-	9.6%	-	-	1.14E+02	-	-	1.03E+02	-	-
Lake Ridge GID, NV	-	-	19.6%	-	-	2.75E+01	-	-	2.22E+01	-	-
Logan Creek GID, NV	-	-	4.9%	-	-	7.89E+00	-	-	7.51E+00	-	-
Marla Bay GID, NV	-	-	19.8%	-	-	1.97E+01	-	-	1.58E+01	-	-
Oliver Park GID, NV	-	-	12.6%	-	-	8.56E+00	-	-	7.48E+00	-	-
Douglas C. Other, NV	-	-	14.3%	-	-	5.80E+02	-	-	4.97E+02	-	-
Round Hill GID, NV	-	-	8.4%	-	-	4.46E+01	-	-	4.09E+01	-	-
Skyland GID, NV	-	-	19.9%	-	-	9.27E+01	-	-	7.43E+01	-	-
Zephyr Cove GID, NV	-	-	19.8%	-	-	1.36E+01	-	-	1.09E+01	-	-
Zephyr Heights GID, NV	-	-	18.6%	-	-	4.66E+01	-	-	3.79E+01	-	-
Zephyr Knolls GID, NV	-	-	19.4%	-	-	1.35E+01	-	-	1.09E+01	-	-
El Dorado County, CA	-	-	17.9%	-	-	2.85E+03	-	-	2.34E+03	-	-
Forest Service, CA	-	-	1.3%	-	-	8.00E+03	-	-	7.89E+03	-	-
Forest Service, NV	-	-	1.0%	-	-	9.45E+02	-	-	9.35E+02	-	-
NDOT, NV	-	-	12.2%	-	-	1.15E+03	-	-	1.01E+03	-	-
Placer County, CA	-	-	15.3%	-	-	5.41E+03	-	-	4.58E+03	-	-
State Lands, NV	-	-	8.3%	-	-	3.69E+01	-	-	3.38E+01	-	-
State Parks, CA	-	-	9.7%	-	-	7.67E+02	-	-	6.93E+02	-	-
State Parks, NV	-	-	7.1%	-	-	3.39E+02	-	-	3.15E+02	-	-
Washoe County, NV	-	-	18.5%	-	-	2.48E+03	-	-	2.02E+03	-	-

<sup>8</sup> These percent reductions are based on the jurisdictional baselines, not the Basin-wide values presented in Table 4-7.

**Table C-12. Total Nitrogen Jurisdictional Percent Reductions and Allowable Loads at Each Milestone for Approach III: Setting Specific Approach**

Jurisdiction	% Reduction from jurisdiction baseline <sup>9</sup>					Allowable load (Metric Tonnes)					
	Milestone #1	Milestone #2	Milestone (#3)	Milestone #4	Load target	Baseline load	Milestone #1	Milestone #2	Milestone (#3)	Milestone #4	Load target
California Tahoe Conservancy, CA	-	-	4.8%	-	-	2.21E+03	-	-	2.10E+03	-	-
CalTrans, CA	-	-	14.2%	-	-	5.22E+03	-	-	4.48E+03	-	-
Carson City, NV	-	-	0.0%	-	-	1.26E+02	-	-	1.26E+02	-	-
South Lake Tahoe, CA	-	-	22.5%	-	-	1.63E+04	-	-	1.26E+04	-	-
Cave Rock GID, NV	-	-	3.6%	-	-	1.17E+02	-	-	1.13E+02	-	-
Elk Point GID, NV	-	-	3.8%	-	-	5.48E+01	-	-	5.27E+01	-	-
KGID, NV	-	-	7.9%	-	-	8.22E+02	-	-	7.57E+02	-	-
Lake Ridge GID, NV	-	-	18.1%	-	-	7.36E+01	-	-	6.03E+01	-	-
Logan Creek GID, NV	-	-	3.6%	-	-	2.56E+01	-	-	2.47E+01	-	-
Marla Bay GID, NV	-	-	18.8%	-	-	4.99E+01	-	-	4.06E+01	-	-
Oliver Park GID, NV	-	-	10.6%	-	-	6.95E+01	-	-	6.22E+01	-	-
Douglas C. Other, NV	-	-	13.8%	-	-	2.08E+03	-	-	1.79E+03	-	-
Round Hill GID, NV	-	-	5.7%	-	-	2.32E+02	-	-	2.19E+02	-	-
Skyland GID, NV	-	-	18.9%	-	-	2.41E+02	-	-	1.95E+02	-	-
Zephyr Cove GID, NV	-	-	18.7%	-	-	3.63E+01	-	-	2.95E+01	-	-
Zephyr Heights GID, NV	-	-	16.1%	-	-	1.36E+02	-	-	1.14E+02	-	-
Zephyr Knolls GID, NV	-	-	18.0%	-	-	3.76E+01	-	-	3.09E+01	-	-
El Dorado County, CA	-	-	16.1%	-	-	1.44E+04	-	-	1.21E+04	-	-
Forest Service, CA	-	-	0.7%	-	-	4.57E+04	-	-	4.54E+04	-	-
Forest Service, NV	-	-	0.7%	-	-	4.35E+03	-	-	4.32E+03	-	-
NDOT, NV	-	-	11.2%	-	-	1.88E+03	-	-	1.67E+03	-	-
Placer County, CA	-	-	15.1%	-	-	1.64E+04	-	-	1.39E+04	-	-
State Lands, NV	-	-	6.7%	-	-	1.31E+02	-	-	1.22E+02	-	-
State Parks, CA	-	-	6.4%	-	-	3.67E+03	-	-	3.43E+03	-	-
State Parks, NV	-	-	4.5%	-	-	1.39E+03	-	-	1.32E+03	-	-
Washoe County, NV	-	-	16.2%	-	-	9.23E+03	-	-	7.73E+03	-	-

<sup>9</sup> These percent reductions are based on the jurisdictional baselines, not the Basin-wide values presented in Table 4-7.



**Table C-13. Fine Sediment Particle Jurisdictional Percent Reductions and Allowable Loads at Each Milestone for Approach IV: Watershed Model Approach**

Jurisdiction	% Reduction from jurisdiction baseline <sup>10</sup>					Allowable load (particles x10 <sup>18</sup> )					
	Milestone #1	Milestone #2	Milestone #3	Milestone #4	Load target	Baseline load	Milestone #1	Milestone #2	Milestone #3	Milestone #4	Load target
California Tahoe Conservancy, CA	-	-	23.2%	-	-	4.76E+18	-	-	3.66E+18	-	-
CalTrans, CA	-	-	36.3%	-	-	7.64E+19	-	-	4.86E+19	-	-
Carson City, NV	-	-	9.5%	-	-	1.00E+16	-	-	9.08E+15	-	-
South Lake Tahoe, CA	-	-	38.4%	-	-	7.46E+19	-	-	4.59E+19	-	-
Cave Rock GID, NV	-	-	11.7%	-	-	3.80E+17	-	-	3.36E+17	-	-
Elk Point GID, NV	-	-	11.9%	-	-	1.62E+17	-	-	1.43E+17	-	-
KGID, NV	-	-	17.9%	-	-	7.85E+17	-	-	6.45E+17	-	-
Lake Ridge GID, NV	-	-	8.4%	-	-	2.13E+17	-	-	1.95E+17	-	-
Logan Creek GID, NV	-	-	10.7%	-	-	5.09E+16	-	-	4.55E+16	-	-
Marla Bay GID, NV	-	-	7.7%	-	-	1.33E+17	-	-	1.23E+17	-	-
Oliver Park GID, NV	-	-	22.6%	-	-	8.12E+16	-	-	6.29E+16	-	-
Douglas C. Other, NV	-	-	25.8%	-	-	6.63E+18	-	-	4.92E+18	-	-
Round Hill GID, NV	-	-	11.0%	-	-	3.63E+17	-	-	3.23E+17	-	-
Skyland GID, NV	-	-	8.2%	-	-	7.13E+17	-	-	6.55E+17	-	-
Zephyr Cove GID, NV	-	-	6.5%	-	-	1.03E+17	-	-	9.64E+16	-	-
Zephyr Heights GID, NV	-	-	8.4%	-	-	4.77E+17	-	-	4.37E+17	-	-
Zephyr Knolls GID, NV	-	-	7.7%	-	-	1.14E+17	-	-	1.05E+17	-	-
El Dorado County, CA	-	-	37.6%	-	-	3.76E+19	-	-	2.35E+19	-	-
Forest Service, CA	-	-	12.7%	-	-	3.65E+19	-	-	3.19E+19	-	-
Forest Service, NV	-	-	16.4%	-	-	1.95E+18	-	-	1.63E+18	-	-
NDOT, NV	-	-	27.7%	-	-	3.28E+19	-	-	2.37E+19	-	-
Placer County, CA	-	-	34.0%	-	-	5.69E+19	-	-	3.75E+19	-	-
State Lands, NV	-	-	26.9%	-	-	3.89E+17	-	-	2.84E+17	-	-
State Parks, CA	-	-	29.5%	-	-	5.29E+18	-	-	3.73E+18	-	-
State Parks, NV	-	-	30.2%	-	-	2.83E+18	-	-	1.98E+18	-	-
Washoe County, NV	-	-	33.4%	-	-	4.88E+19	-	-	3.25E+19	-	-

<sup>10</sup> These percent reductions are based on the jurisdictional baselines, not the Basin-wide values presented in Table 4-7.

**Table C-14. Total Phosphorus Jurisdictional Percent Reductions and Allowable Loads at Each Milestone for Approach IV: Watershed Model Approach**

Jurisdiction	% Reduction from jurisdiction baseline <sup>11</sup>					Allowable load (Metric Tonnes)					
	Milestone #1	Milestone #2	Milestone #3	Milestone #4	Load target	Baseline load	Milestone #1	Milestone #2	Milestone #3	Milestone #4	Load target
California Tahoe Conservancy, CA	-	-	5.2%	-	-	5.09E+02	-	-	4.83E+02	-	-
CalTrans, CA	-	-	21.8%	-	-	2.85E+03	-	-	2.23E+03	-	-
Carson City, NV	-	-	0.7%	-	-	2.04E+01	-	-	2.02E+01	-	-
South Lake Tahoe, CA	-	-	14.3%	-	-	3.61E+03	-	-	3.09E+03	-	-
Cave Rock GID, NV	-	-	9.0%	-	-	4.20E+01	-	-	3.83E+01	-	-
Elk Point GID, NV	-	-	9.9%	-	-	2.07E+01	-	-	1.87E+01	-	-
KGID, NV	-	-	7.1%	-	-	1.14E+02	-	-	1.06E+02	-	-
Lake Ridge GID, NV	-	-	7.9%	-	-	2.75E+01	-	-	2.54E+01	-	-
Logan Creek GID, NV	-	-	6.4%	-	-	7.89E+00	-	-	7.39E+00	-	-
Marla Bay GID, NV	-	-	6.5%	-	-	1.97E+01	-	-	1.84E+01	-	-
Oliver Park GID, NV	-	-	12.4%	-	-	8.56E+00	-	-	7.49E+00	-	-
Douglas C. Other, NV	-	-	7.0%	-	-	5.80E+02	-	-	5.40E+02	-	-
Round Hill GID, NV	-	-	5.8%	-	-	4.46E+01	-	-	4.21E+01	-	-
Skyland GID, NV	-	-	7.7%	-	-	9.27E+01	-	-	8.56E+01	-	-
Zephyr Cove GID, NV	-	-	4.7%	-	-	1.36E+01	-	-	1.30E+01	-	-
Zephyr Heights GID, NV	-	-	7.4%	-	-	4.66E+01	-	-	4.31E+01	-	-
Zephyr Knolls GID, NV	-	-	6.5%	-	-	1.35E+01	-	-	1.26E+01	-	-
El Dorado County, CA	-	-	18.7%	-	-	2.85E+03	-	-	2.32E+03	-	-
Forest Service, CA	-	-	3.8%	-	-	8.00E+03	-	-	7.69E+03	-	-
Forest Service, NV	-	-	1.2%	-	-	9.45E+02	-	-	9.33E+02	-	-
NDOT, NV	-	-	17.0%	-	-	1.15E+03	-	-	9.51E+02	-	-
Placer County, CA	-	-	13.6%	-	-	5.41E+03	-	-	4.68E+03	-	-
State Lands, NV	-	-	0.5%	-	-	3.69E+01	-	-	3.67E+01	-	-
State Parks, CA	-	-	3.2%	-	-	7.67E+02	-	-	7.43E+02	-	-
State Parks, NV	-	-	1.1%	-	-	3.39E+02	-	-	3.35E+02	-	-
Washoe County, NV	-	-	6.4%	-	-	2.48E+03	-	-	2.32E+03	-	-

<sup>11</sup> These percent reductions are based on the jurisdictional baselines, not the Basin-wide values presented in Table 4-7.

**Table C-15. Total Nitrogen Jurisdictional Percent Reductions and Allowable Loads at Each Milestone for Approach IV: Watershed Model Approach**

Jurisdiction	% Reduction from jurisdiction baseline <sup>12</sup>					Allowable load (Metric Tonnes)					
	Milestone #1	Milestone #2	Milestone #3	Milestone #4	Load target	Baseline load	Milestone #1	Milestone #2	Milestone #3	Milestone #4	Load target
California Tahoe Conservancy, CA	-	-	1.4%	-	-	2.21E+03	-	-	2.17E+03	-	-
CalTrans, CA	-	-	14.5%	-	-	5.22E+03	-	-	4.46E+03	-	-
Carson City, NV	-	-	0.0%	-	-	1.26E+02	-	-	1.26E+02	-	-
South Lake Tahoe, CA	-	-	10.5%	-	-	1.63E+04	-	-	1.46E+04	-	-
Cave Rock GID, NV	-	-	7.1%	-	-	1.17E+02	-	-	1.08E+02	-	-
Elk Point GID, NV	-	-	8.8%	-	-	5.48E+01	-	-	4.99E+01	-	-
KGID, NV	-	-	6.1%	-	-	8.22E+02	-	-	7.72E+02	-	-
Lake Ridge GID, NV	-	-	6.2%	-	-	7.36E+01	-	-	6.91E+01	-	-
Logan Creek GID, NV	-	-	5.5%	-	-	2.56E+01	-	-	2.42E+01	-	-
Marla Bay GID, NV	-	-	5.6%	-	-	4.99E+01	-	-	4.72E+01	-	-
Oliver Park GID, NV	-	-	11.3%	-	-	6.95E+01	-	-	6.17E+01	-	-
Douglas C. Other, NV	-	-	7.1%	-	-	2.08E+03	-	-	1.94E+03	-	-
Round Hill GID, NV	-	-	5.6%	-	-	2.32E+02	-	-	2.19E+02	-	-
Skyland GID, NV	-	-	6.0%	-	-	2.41E+02	-	-	2.26E+02	-	-
Zephyr Cove GID, NV	-	-	3.5%	-	-	3.63E+01	-	-	3.51E+01	-	-
Zephyr Heights GID, NV	-	-	5.5%	-	-	1.36E+02	-	-	1.28E+02	-	-
Zephyr Knolls GID, NV	-	-	4.3%	-	-	3.76E+01	-	-	3.60E+01	-	-
El Dorado County, CA	-	-	14.8%	-	-	1.44E+04	-	-	1.23E+04	-	-
Forest Service, CA	-	-	0.7%	-	-	4.57E+04	-	-	4.54E+04	-	-
Forest Service, NV	-	-	0.6%	-	-	4.35E+03	-	-	4.32E+03	-	-
NDOT, NV	-	-	10.5%	-	-	1.88E+03	-	-	1.68E+03	-	-
Placer County, CA	-	-	7.9%	-	-	1.64E+04	-	-	1.51E+04	-	-
State Lands, NV	-	-	0.0%	-	-	1.31E+02	-	-	1.31E+02	-	-
State Parks, CA	-	-	0.6%	-	-	3.67E+03	-	-	3.64E+03	-	-
State Parks, NV	-	-	2.8%	-	-	1.39E+03	-	-	1.35E+03	-	-
Washoe County, NV	-	-	6.6%	-	-	9.23E+03	-	-	8.62E+03	-	-

<sup>12</sup> These percent reductions are based on the jurisdictional baselines, not the Basin-wide values presented in Table 4-7.

**Table C-16. Fine Sediment Particle Loads Relevant to Approach V: Anthropogenic Loading**

Jurisdiction	Fine sediment particle load (# of particles)			
	Baseline load	Background load	Anthropogenic load	Anthropogenic load % of baseline <sup>13</sup>
California Tahoe Conservancy, CA	4.76E+18	2.91E+18	1.86E+18	39.0%
CalTrans, CA	7.64E+19	2.24E+16	7.63E+19	100%
Carson City, NV	1.00E+16	7.84E+15	2.21E+15	22.0%
South Lake Tahoe, CA	7.46E+19	1.23E+17	7.45E+19	99.8%
Cave Rock GID, NV	3.80E+17	2.30E+15	3.78E+17	99.4%
Elk Point GID, NV	1.62E+17	6.34E+14	1.62E+17	99.6%
KGID, NV	7.85E+17	1.03E+15	7.84E+17	99.9%
Lake Ridge GID, NV	2.13E+17	5.06E+14	2.12E+17	99.8%
Logan Creek GID, NV	5.09E+16	3.33E+14	5.06E+16	99.3%
Marla Bay GID, NV	1.33E+17	4.52E+14	1.32E+17	99.7%
Oliver Park GID, NV	8.12E+16	5.08E+13	8.12E+16	99.9%
Douglas C. Other, NV	6.63E+18	4.22E+16	6.59E+18	99.4%
Round Hill GID, NV	3.63E+17	1.14E+15	3.62E+17	99.7%
Skyland GID, NV	7.13E+17	1.84E+15	7.11E+17	99.7%
Zephyr Cove GID, NV	1.03E+17	5.23E+14	1.03E+17	99.5%
Zephyr Heights GID, NV	4.77E+17	1.12E+15	4.76E+17	99.8%
Zephyr Knolls GID, NV	1.14E+17	4.54E+14	1.13E+17	99.6%
El Dorado County, CA	3.76E+19	2.88E+17	3.73E+19	99.2%
Forest Service, CA	3.65E+19	2.67E+19	9.80E+18	26.8%
Forest Service, NV	1.95E+18	5.44E+17	1.40E+18	72.1%
NDOT, NV	3.28E+19	9.33E+15	3.28E+19	100%
Placer County, CA	5.69E+19	3.65E+18	5.32E+19	93.6%
State Lands, NV	3.89E+17	1.05E+16	3.79E+17	97.3%
State Parks, CA	5.29E+18	6.00E+17	4.69E+18	88.7%
State Parks, NV	2.83E+18	7.61E+16	2.76E+18	97.3%
Washoe County, NV	4.88E+19	4.20E+17	4.84E+19	99.1%

<sup>13</sup> All values have been rounded to three significant figures.

**Table C-17. Total Phosphorus Loads Relevant to Approach V: Anthropogenic Loading**

Jurisdiction	Load (Metric Tonnes)			
	Baseline load	Background load	Anthropogenic load	Anthropogenic load % of baseline <sup>14</sup>
California Tahoe Conservancy, CA	5.09E+02	3.60E+02	1.50E+02	29.4%
CalTrans, CA	2.85E+03	1.34E+01	2.84E+03	99.5%
Carson City, NV	2.04E+01	1.70E+01	3.39E+00	16.6%
South Lake Tahoe, CA	3.61E+03	8.09E+01	3.53E+03	97.8%
Cave Rock GID, NV	4.20E+01	2.74E+00	3.93E+01	93.5%
Elk Point GID, NV	2.07E+01	1.22E+00	1.95E+01	94.1%
KGID, NV	1.14E+02	1.32E+01	1.00E+02	88.4%
Lake Ridge GID, NV	2.75E+01	1.33E+00	2.62E+01	95.2%
Logan Creek GID, NV	7.89E+00	9.77E-01	6.92E+00	87.6%
Marla Bay GID, NV	1.97E+01	1.28E+00	1.84E+01	93.5%
Oliver Park GID, NV	8.56E+00	4.00E-01	8.16E+00	95.3%
Douglas C. Other, NV	5.80E+02	7.61E+01	5.04E+02	86.9%
Round Hill GID, NV	4.46E+01	5.35E+00	3.93E+01	88.0%
Skyland GID, NV	9.27E+01	4.29E+00	8.84E+01	95.4%
Zephyr Cove GID, NV	1.36E+01	1.13E+00	1.25E+01	91.7%
Zephyr Heights GID, NV	4.66E+01	2.82E+00	4.38E+01	94.0%
Zephyr Knolls GID, NV	1.35E+01	9.52E-01	1.26E+01	93.0%
El Dorado County, CA	2.85E+03	2.41E+02	2.61E+03	91.6%
Forest Service, CA	8.00E+03	6.96E+03	1.04E+03	13.0%
Forest Service, NV	9.45E+02	8.87E+02	5.77E+01	6.1%
NDOT, NV	1.15E+03	9.81E+00	1.14E+03	99.1%
Placer County, CA	5.41E+03	6.04E+02	4.81E+03	88.8%
State Lands, NV	3.69E+01	1.50E+01	2.19E+01	59.3%
State Parks, CA	7.67E+02	3.25E+02	4.43E+02	57.7%
State Parks, NV	3.39E+02	2.21E+02	1.18E+02	34.8%
Washoe County, NV	2.48E+03	3.92E+02	2.09E+03	84.2%

<sup>14</sup> All values have been rounded to three significant figures.

**Table C-18. Total Nitrogen Loads Relevant to Approach V: Anthropogenic Loading**

Jurisdiction	Load (Metric Tonnes)			
	Baseline load	Background load	Anthropogenic load	Anthropogenic load % of baseline <sup>15</sup>
California Tahoe Conservancy, CA	2.21E+03	1.75E+03	4.51E+02	20.4%
CalTrans, CA	5.22E+03	7.62E+01	5.15E+03	98.5%
Carson City, NV	1.26E+02	1.18E+02	8.23E+00	6.5%
South Lake Tahoe, CA	1.63E+04	6.51E+02	1.56E+04	96.0%
Cave Rock GID, NV	1.17E+02	1.08E+01	1.06E+02	90.8%
Elk Point GID, NV	5.48E+01	4.71E+00	5.01E+01	91.4%
KGID, NV	8.22E+02	5.79E+01	7.64E+02	93.0%
Lake Ridge GID, NV	7.36E+01	5.25E+00	6.84E+01	92.9%
Logan Creek GID, NV	2.56E+01	4.27E+00	2.14E+01	83.3%
Marla Bay GID, NV	4.99E+01	4.96E+00	4.50E+01	90.1%
Oliver Park GID, NV	6.95E+01	2.46E+00	6.71E+01	96.5%
Douglas C. Other, NV	2.08E+03	2.91E+02	1.79E+03	86.0%
Round Hill GID, NV	2.32E+02	3.36E+01	1.99E+02	85.6%
Skyland GID, NV	2.41E+02	1.66E+01	2.24E+02	93.1%
Zephyr Cove GID, NV	3.63E+01	4.38E+00	3.19E+01	87.9%
Zephyr Heights GID, NV	1.36E+02	1.21E+01	1.24E+02	91.1%
Zephyr Knolls GID, NV	3.76E+01	3.77E+00	3.39E+01	90.0%
El Dorado County, CA	1.44E+04	1.90E+03	1.25E+04	86.8%
Forest Service, CA	4.57E+04	4.35E+04	2.23E+03	4.9%
Forest Service, NV	4.35E+03	4.22E+03	1.33E+02	3.0%
NDOT, NV	1.88E+03	3.75E+01	1.84E+03	98.0%
Placer County, CA	1.64E+04	2.80E+03	1.36E+04	82.9%
State Lands, NV	1.31E+02	5.76E+01	7.31E+01	55.9%
State Parks, CA	3.67E+03	2.26E+03	1.40E+03	38.3%
State Parks, NV	1.39E+03	1.10E+03	2.89E+02	20.9%
Washoe County, NV	9.23E+03	1.65E+03	7.57E+03	82.1%

<sup>15</sup> All values have been rounded to three significant figures.

**Table C-19. Fine Sediment Particle Jurisdictional Percent Reductions and Allowable Loads at Each Milestone for Approach V: Anthropogenic Loading**

Jurisdiction	% Reduction from jurisdiction baseline <sup>16</sup>					Allowable load (particles x10 <sup>18</sup> )					
	Milestone #1	Milestone #2	Milestone (#3)	Milestone #4	Load target	Baseline load	Milestone #1	Milestone #2	Milestone (#3)	Milestone #4	Load target
California Tahoe Conservancy, CA	4.2%	8.5%	13.5%	16.7%	28.3%	4.76E+18	4.56E+18	4.36E+18	4.12E+18	3.97E+18	3.42E+18
CalTrans, CA	10.8%	21.9%	34.7%	42.8%	72.4%	7.64E+19	6.81E+19	5.96E+19	4.99E+19	4.37E+19	2.11E+19
Carson City, NV	2.4%	4.8%	7.6%	9.4%	15.9%	1.00E+16	9.81E+15	9.56E+15	9.28E+15	9.10E+15	8.45E+15
South Lake Tahoe, CA	10.8%	21.9%	34.6%	42.7%	72.3%	7.46E+19	6.66E+19	5.83E+19	4.88E+19	4.27E+19	2.07E+19
Cave Rock GID, NV	10.7%	21.8%	34.5%	42.5%	72.0%	3.80E+17	3.39E+17	2.97E+17	2.49E+17	2.18E+17	1.06E+17
Elk Point GID, NV	10.7%	21.8%	34.6%	42.6%	72.2%	1.62E+17	1.45E+17	1.27E+17	1.06E+17	9.31E+16	4.52E+16
KGID, NV	10.8%	21.9%	34.6%	42.7%	72.3%	7.85E+17	7.01E+17	6.13E+17	5.13E+17	4.50E+17	2.17E+17
Lake Ridge GID, NV	10.8%	21.9%	34.6%	42.7%	72.3%	2.13E+17	1.90E+17	1.66E+17	1.39E+17	1.22E+17	5.90E+16
Logan Creek GID, NV	10.7%	21.8%	34.5%	42.5%	72.0%	5.09E+16	4.55E+16	3.99E+16	3.34E+16	2.93E+16	1.43E+16
Marla Bay GID, NV	10.7%	21.8%	34.6%	42.7%	72.2%	1.33E+17	1.19E+17	1.04E+17	8.69E+16	7.62E+16	3.69E+16
Oliver Park GID, NV	10.8%	21.9%	34.7%	42.8%	72.4%	8.12E+16	7.25E+16	6.34E+16	5.31E+16	4.65E+16	2.24E+16
Douglas C. Other, NV	10.7%	21.8%	34.5%	42.5%	72.0%	6.63E+18	5.92E+18	5.18E+18	4.34E+18	3.81E+18	1.86E+18
Round Hill GID, NV	10.7%	21.8%	34.6%	42.7%	72.2%	3.63E+17	3.24E+17	2.84E+17	2.38E+17	2.08E+17	1.01E+17
Skyland GID, NV	10.8%	21.9%	34.6%	42.7%	72.2%	7.13E+17	6.37E+17	5.57E+17	4.66E+17	4.09E+17	1.98E+17
Zephyr Cove GID, NV	10.7%	21.8%	34.5%	42.6%	72.1%	1.03E+17	9.21E+16	8.07E+16	6.75E+16	5.92E+16	2.88E+16
Zephyr Heights GID, NV	10.8%	21.9%	34.6%	42.7%	72.3%	4.77E+17	4.26E+17	3.73E+17	3.12E+17	2.74E+17	1.32E+17
Zephyr Knolls GID, NV	10.7%	21.8%	34.6%	42.6%	72.1%	1.14E+17	1.01E+17	8.88E+16	7.43E+16	6.52E+16	3.16E+16
El Dorado County, CA	10.7%	21.7%	34.4%	42.5%	71.9%	3.76E+19	3.36E+19	2.94E+19	2.46E+19	2.16E+19	1.06E+19
Forest Service, CA	2.9%	5.9%	9.3%	11.5%	19.4%	3.65E+19	3.55E+19	3.44E+19	3.31E+19	3.23E+19	2.94E+19
Forest Service, NV	7.8%	15.8%	25.0%	30.8%	52.2%	1.95E+18	1.80E+18	1.64E+18	1.46E+18	1.35E+18	9.30E+17
NDOT, NV	10.8%	21.9%	34.7%	42.8%	72.4%	3.28E+19	2.93E+19	2.56E+19	2.14E+19	1.88E+19	9.05E+18
Placer County, CA	10.1%	20.5%	32.5%	40.0%	67.8%	5.69E+19	5.11E+19	4.52E+19	3.84E+19	3.41E+19	1.83E+19
State Lands, NV	10.5%	21.3%	33.8%	41.6%	70.5%	3.89E+17	3.48E+17	3.06E+17	2.58E+17	2.27E+17	1.15E+17
State Parks, CA	9.6%	19.4%	30.8%	37.9%	64.2%	5.29E+18	4.79E+18	4.26E+18	3.66E+18	3.28E+18	1.89E+18
State Parks, NV	10.5%	21.3%	33.8%	41.6%	70.5%	2.83E+18	2.53E+18	2.23E+18	1.88E+18	1.65E+18	8.36E+17
Washoe County, NV	10.7%	21.7%	34.4%	42.4%	71.8%	4.88E+19	4.36E+19	3.82E+19	3.20E+19	2.81E+19	1.38E+19

<sup>16</sup> These percent reductions are based on the jurisdictional baselines, not the Basin-wide values presented in Table 4-7.

**Table C-20. Total Phosphorus Jurisdictional Percent Reductions and Allowable Loads at Each Milestone for Approach V: Anthropogenic Loading**

Jurisdiction	% Reduction from jurisdiction baseline <sup>17</sup>					Allowable load (Metric Tonnes)					
	Milestone #1	Milestone #2	Milestone (#3)	Milestone #4	Load target	Baseline load	Milestone #1	Milestone #2	Milestone (#3)	Milestone #4	Load target
California Tahoe Conservancy, CA	2.0%	3.8%	5.8%	7.6%	12.9%	5.09E+02	4.99E+02	4.90E+02	4.80E+02	4.71E+02	4.44E+02
CalTrans, CA	6.8%	12.9%	19.5%	25.7%	43.5%	2.85E+03	2.66E+03	2.48E+03	2.30E+03	2.12E+03	1.61E+03
Carson City, NV	1.1%	2.2%	3.3%	4.3%	7.3%	2.04E+01	2.01E+01	1.99E+01	1.97E+01	1.95E+01	1.89E+01
South Lake Tahoe, CA	6.7%	12.7%	19.2%	25.3%	42.8%	3.61E+03	3.37E+03	3.15E+03	2.92E+03	2.70E+03	2.07E+03
Cave Rock GID, NV	6.4%	12.2%	18.4%	24.2%	40.9%	4.20E+01	3.93E+01	3.69E+01	3.43E+01	3.19E+01	2.48E+01
Elk Point GID, NV	6.4%	12.2%	18.5%	24.3%	41.2%	2.07E+01	1.94E+01	1.82E+01	1.69E+01	1.57E+01	1.22E+01
KGID, NV	6.0%	11.5%	17.4%	22.8%	38.7%	1.14E+02	1.07E+02	1.01E+02	9.39E+01	8.76E+01	6.96E+01
Lake Ridge GID, NV	6.5%	12.4%	18.7%	24.6%	41.6%	2.75E+01	2.58E+01	2.41E+01	2.24E+01	2.08E+01	1.61E+01
Logan Creek GID, NV	6.0%	11.4%	17.2%	22.7%	38.3%	7.89E+00	7.42E+00	6.99E+00	6.54E+00	6.11E+00	4.87E+00
Marla Bay GID, NV	6.4%	12.2%	18.4%	24.2%	40.9%	1.97E+01	1.84E+01	1.73E+01	1.61E+01	1.49E+01	1.16E+01
Oliver Park GID, NV	6.5%	12.4%	18.7%	24.6%	41.7%	8.56E+00	8.00E+00	7.50E+00	6.95E+00	6.45E+00	4.99E+00
Douglas C. Other, NV	5.9%	11.3%	17.1%	22.5%	38.0%	5.80E+02	5.46E+02	5.15E+02	4.81E+02	4.50E+02	3.60E+02
Round Hill GID, NV	6.0%	11.4%	17.3%	22.8%	38.5%	4.46E+01	4.20E+01	3.95E+01	3.69E+01	3.45E+01	2.74E+01
Skyland GID, NV	6.5%	12.4%	18.7%	24.7%	41.7%	9.27E+01	8.67E+01	8.12E+01	7.54E+01	6.99E+01	5.40E+01
Zephyr Cove GID, NV	6.3%	11.9%	18.0%	23.7%	40.1%	1.36E+01	1.28E+01	1.20E+01	1.12E+01	1.04E+01	8.17E+00
Zephyr Heights GID, NV	6.4%	12.2%	18.4%	24.3%	41.1%	4.66E+01	4.36E+01	4.09E+01	3.80E+01	3.53E+01	2.74E+01
Zephyr Knolls GID, NV	6.3%	12.1%	18.3%	24.0%	40.7%	1.35E+01	1.27E+01	1.19E+01	1.10E+01	1.03E+01	8.02E+00
El Dorado County, CA	6.2%	11.9%	18.0%	23.7%	40.1%	2.85E+03	2.68E+03	2.52E+03	2.34E+03	2.18E+03	1.71E+03
Forest Service, CA	0.9%	1.7%	2.6%	3.4%	5.7%	8.00E+03	7.93E+03	7.86E+03	7.79E+03	7.73E+03	7.54E+03
Forest Service, NV	0.4%	0.8%	1.2%	1.6%	2.7%	9.45E+02	9.41E+02	9.37E+02	9.33E+02	9.30E+02	9.20E+02
NDOT, NV	6.8%	12.9%	19.5%	25.6%	43.4%	1.15E+03	1.07E+03	9.99E+02	9.23E+02	8.53E+02	6.49E+02
Placer County, CA	6.1%	11.5%	17.4%	23.0%	38.9%	5.41E+03	5.08E+03	4.79E+03	4.47E+03	4.17E+03	3.31E+03
State Lands, NV	4.0%	7.7%	11.6%	15.3%	25.9%	3.69E+01	3.54E+01	3.40E+01	3.26E+01	3.12E+01	2.73E+01
State Parks, CA	3.9%	7.5%	11.3%	14.9%	25.2%	7.67E+02	7.37E+02	7.10E+02	6.80E+02	6.53E+02	5.74E+02
State Parks, NV	2.4%	4.5%	6.8%	9.0%	15.2%	3.39E+02	3.31E+02	3.23E+02	3.16E+02	3.08E+02	2.87E+02
Washoe County, NV	5.7%	10.9%	16.5%	21.8%	36.8%	2.48E+03	2.34E+03	2.21E+03	2.07E+03	1.94E+03	1.57E+03

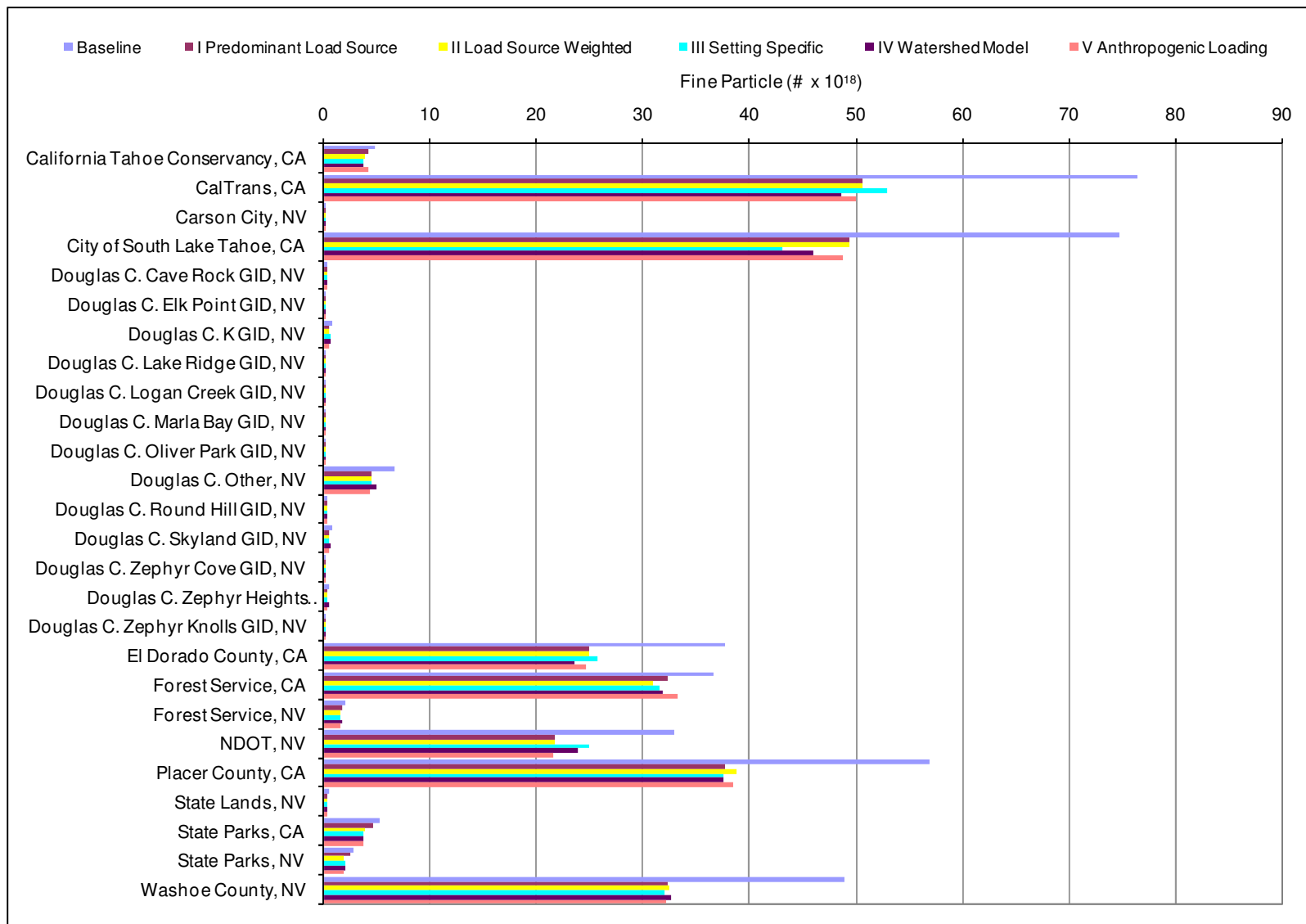
<sup>17</sup> These percent reductions are based on the jurisdictional baselines, not the Basin-wide values presented in Table 4-7.



**Table C-21. Total Nitrogen Jurisdictional Percent Reductions and Allowable Loads at Each Milestone for Approach V: Anthropogenic Loading**

Jurisdiction	% Reduction from jurisdiction baseline <sup>18</sup>					Allowable load (Metric Tonnes)					
	Milestone #1	Milestone #2	Milestone (#3)	Milestone #4	Load target	Baseline load	Milestone #1	Milestone #2	Milestone (#3)	Milestone #4	Load target
California Tahoe Conservancy, CA	1.5%	2.9%	3.9%	6.0%	10.2%	2.21E+03	2.17E+03	2.14E+03	2.12E+03	2.07E+03	1.98E+03
CalTrans, CA	7.4%	13.9%	18.9%	29.0%	49.1%	5.22E+03	4.84E+03	4.50E+03	4.24E+03	3.71E+03	2.66E+03
Carson City, NV	0.5%	0.9%	1.3%	1.9%	3.3%	1.26E+02	1.25E+02	1.25E+02	1.24E+02	1.23E+02	1.22E+02
South Lake Tahoe, CA	7.2%	13.6%	18.4%	28.3%	47.8%	1.63E+04	1.51E+04	1.41E+04	1.33E+04	1.17E+04	8.49E+03
Cave Rock GID, NV	6.8%	12.8%	17.4%	26.7%	45.2%	1.17E+02	1.09E+02	1.02E+02	9.64E+01	8.55E+01	6.39E+01
Elk Point GID, NV	6.8%	12.9%	17.5%	26.9%	45.5%	5.48E+01	5.10E+01	4.77E+01	4.52E+01	4.00E+01	2.98E+01
KGID, NV	6.9%	13.1%	17.8%	27.4%	46.3%	8.22E+02	7.65E+02	7.14E+02	6.75E+02	5.97E+02	4.41E+02
Lake Ridge GID, NV	6.9%	13.1%	17.8%	27.3%	46.3%	7.36E+01	6.85E+01	6.40E+01	6.05E+01	5.35E+01	3.96E+01
Logan Creek GID, NV	6.2%	11.8%	16.0%	24.5%	41.5%	2.56E+01	2.40E+01	2.26E+01	2.15E+01	1.93E+01	1.50E+01
Marla Bay GID, NV	6.7%	12.7%	17.3%	26.5%	44.9%	4.99E+01	4.66E+01	4.36E+01	4.13E+01	3.67E+01	2.75E+01
Oliver Park GID, NV	7.2%	13.6%	18.5%	28.4%	48.1%	6.95E+01	6.45E+01	6.01E+01	5.67E+01	4.98E+01	3.61E+01
Douglas C. Other, NV	6.4%	12.2%	16.5%	25.3%	42.9%	2.08E+03	1.95E+03	1.83E+03	1.74E+03	1.56E+03	1.19E+03
Round Hill GID, NV	6.4%	12.1%	16.4%	25.2%	42.6%	2.32E+02	2.17E+02	2.04E+02	1.94E+02	1.74E+02	1.33E+02
Skyland GID, NV	7.0%	13.2%	17.9%	27.4%	46.4%	2.41E+02	2.24E+02	2.09E+02	1.98E+02	1.75E+02	1.29E+02
Zephyr Cove GID, NV	6.6%	12.4%	16.9%	25.9%	43.8%	3.63E+01	3.39E+01	3.18E+01	3.02E+01	2.69E+01	2.04E+01
Zephyr Heights GID, NV	6.8%	12.9%	17.5%	26.8%	45.4%	1.36E+02	1.26E+02	1.18E+02	1.12E+02	9.92E+01	7.40E+01
Zephyr Knolls GID, NV	6.7%	12.7%	17.3%	26.5%	44.8%	3.76E+01	3.51E+01	3.28E+01	3.11E+01	2.77E+01	2.08E+01
El Dorado County, CA	6.5%	12.3%	16.7%	25.6%	43.3%	1.44E+04	1.35E+04	1.27E+04	1.20E+04	1.07E+04	8.19E+03
Forest Service, CA	0.4%	0.7%	0.9%	1.4%	2.4%	4.57E+04	4.56E+04	4.54E+04	4.53E+04	4.51E+04	4.46E+04
Forest Service, NV	0.2%	0.4%	0.6%	0.9%	1.5%	4.35E+03	4.34E+03	4.33E+03	4.32E+03	4.31E+03	4.28E+03
NDOT, NV	7.3%	13.8%	18.8%	28.8%	48.8%	1.88E+03	1.74E+03	1.62E+03	1.52E+03	1.33E+03	9.60E+02
Placer County, CA	6.2%	11.7%	15.9%	24.4%	41.3%	1.64E+04	1.54E+04	1.45E+04	1.38E+04	1.24E+04	9.62E+03
State Lands, NV	4.2%	7.9%	10.7%	16.5%	27.9%	1.31E+02	1.25E+02	1.20E+02	1.17E+02	1.09E+02	9.43E+01
State Parks, CA	2.9%	5.4%	7.3%	11.3%	19.1%	3.67E+03	3.56E+03	3.47E+03	3.40E+03	3.25E+03	2.97E+03
State Parks, NV	1.6%	2.9%	4.0%	6.1%	10.4%	1.39E+03	1.36E+03	1.35E+03	1.33E+03	1.30E+03	1.24E+03
Washoe County, NV	6.1%	11.6%	15.7%	24.2%	40.9%	9.23E+03	8.66E+03	8.16E+03	7.77E+03	7.00E+03	5.46E+03

<sup>18</sup> These percent reductions are based on the jurisdictional baselines, not the Basin-wide values presented in Table 4-7.



**Figure C-4. Allowable fine sediment particle load for all jurisdictions at the baseline, and using predominant load, load source weighted, setting specific, watershed model and anthropogenic loading approaches.**



**Figure C-5. Comparison of fine sediment particle load reductions as a percent of baseline load using predominant load, load source weighted, setting specific, watershed model and anthropogenic loading approaches.**

**Table C-22. Table of Basin-wide and Source Category Percent Reductions Used in Allocations Approaches I, II, and III**

This set of numbers bases the loads on the Recommended Strategy numbers and John Reuters Numeric target results as of 3/15/08  
 Percent reduction values beyond the 4th milestone assume the same average rate of reduction achieved between the baseline and 4th milestone.

Particle Reduction	Total Budget		1st Milestone				2nd Milestone				3rd Milestone (Clarity Challenge)				4th Milestone				Numeric Target				20 year average rate of progress				
	Basin-Wide Load (Part/yr)	% of Basin-Wide Load	Cumulative Basin-Wide % Reduction	Basin-Wide Particle Load (Part/yr)	Source Category % Reduction	% of Total Milestone LR by Source	Cumulative Basin-Wide % Reduction	Basin-Wide Particle Load (Part/yr)	Source Category % Reduction	% of Total Milestone LR by Source	Cumulative Basin-Wide % Reduction	Basin-Wide Particle Load (Part/yr)	Source Category % Reduction	% of Total Milestone LR by Source	Cumulative Basin-Wide % Reduction	Basin-Wide Particle Load (Part/yr)	Source Category % Reduction	% of Total Milestone LR by Source	Cumulative Basin-Wide % Reduction	Basin-Wide Particle Load (Part/yr)	Source Category % Reduction	% of Total Milestone LR by Source					
Forest Upland	4.10E+19	9%	0.48%	3.87E+19	5.66%	5%	0.75%	3.74E+19	8.61%	4%	1.00%	3.62E+19	11.73%	4%	1.01%	3.61E+19	11.64%	3%	1.71%	3.28E+19	20.04%	2.6%	0.05%				
Urban Upland	3.48E+20	72%	7.45%	3.12E+20	10.29%	78%	15.38%	2.74E+20	21.22%	79%	24.54%	2.30E+20	33.86%	79%	30.50%	2.02E+20	42.09%	79%	51.62%	1.00E+20	71.23%	79.4%	1.53%				
Atmosphere	7.45E+19	16%	1.22%	6.87E+19	7.85%	13%	2.37%	6.31E+19	15.26%	12%	4.59%	5.24E+19	29.60%	12%	5.04%	5.03E+19	32.48%	13%	8.53%	3.35E+19	54.98%	13.1%	0.25%				
Stream Channel	1.67E+19	3%	0.46%	1.45E+19	13.16%	5%	0.92%	1.23E+19	26.32%	5%	1.83%	7.91E+18	52.64%	5%	1.83%	7.91E+18	52.64%	5%	3.10%	1.82E+18	89.09%	4.8%	0.09%				
<b>Total</b>	<b>4.802E+20</b>	<b>100%</b>	<b>9.61%</b>	<b>4.34E+20</b>	<b>100%</b>	<b>100%</b>	<b>19.41%</b>	<b>3.87E+20</b>	<b>100%</b>	<b>100%</b>	<b>31.97%</b>	<b>3.27E+20</b>	<b>100%</b>	<b>100%</b>	<b>38.38%</b>	<b>2.96E+20</b>	<b>100%</b>	<b>100%</b>	<b>65%</b>	<b>1.68E+20</b>	<b>99.9%</b>	<b>99.9%</b>	<b>1.92%</b>				
Basin-wide load check			90%				81%				69%				62%				65.0%				35.0%				
Nitrogen Reduction	Total Budget		1st Milestone				2nd Milestone				Third Milestone (Clarity Challenge)				4th Milestone				Numeric Target				20 year average rate of progress				
	Cumulative Basin-Wide % Reduction	% of Basin-Wide Load	Cumulative Basin-Wide % Reduction	Basin-Wide Load (MT/yr)	Source Category % Reduction	% of Total Milestone LR by Source	Cumulative Basin-Wide % Reduction	Basin-Wide Load (MT/yr)	Source Category % Reduction	% of Total Milestone LR by Source	Cumulative Basin-Wide % Reduction	Basin-Wide Load (MT/yr)	Source Category % Reduction	% of Total Milestone LR by Source	Cumulative Basin-Wide % Reduction	Basin-Wide Load (MT/yr)	Source Category % Reduction	% of Total Milestone LR by Source	Cumulative Basin-Wide % Reduction	Basin-Wide Particle Load (Part/yr)	Source Category % Reduction	% of Total Milestone LR by Source					
Forest Upland	62	18%	0.02%	61.93	0.11%	1%	0.03%	61.90	0.16%	1%	0.05%	61.84	0.25%	1%	0.05%	61.84	0.26%	1%	0.08%	6.17E+01	0.44%	0.8%	0.00%				
Urban Upland	63	18%	1.37%	58.26	7.53%	88%	2.61%	54.00	14.29%	88%	3.54%	50.80	19.37%	88%	5.45%	44.20	29.84%	88%	9.22%	3.12E+01	50.50%	92.2%	0.27%				
Atmosphere	218	63%	0.16%	217.45	0.25%	10%	0.31%	216.93	0.49%	11%	0.60%	215.93	0.95%	11%	0.66%	215.74	1.04%	11%	1.11%	2.14E+02	1.76%	11.1%	0.03%				
Stream Channel	2	1%		2.00	0.00%	0%		2.00	0.00%	0%		2.00	0.00%	0%		2.00	0.00%	0%	0.00%	2.00E+00	0.00%	0.0%	0.00%				
<b>Total</b>	<b>345</b>	<b>100%</b>	<b>1.55%</b>	<b>339.64</b>	<b>100%</b>	<b>100%</b>	<b>2.95%</b>	<b>334.83</b>	<b>100%</b>	<b>100%</b>	<b>4.18%</b>	<b>330.57</b>	<b>100%</b>	<b>100%</b>	<b>6.15%</b>	<b>323.78</b>	<b>100%</b>	<b>100%</b>	<b>10%</b>	<b>3.091E+02</b>	<b>104.1%</b>	<b>104.1%</b>	<b>0.31%</b>				
Basin-wide load check			98%				97%				96%				94%				10.4%				89.6%				
Phosphorus Reduction	Total Budget		1st Milestone				2nd Milestone				Third Milestone (Clarity Challenge)				4th Milestone				Numeric Target				20 year average rate of progress				
	Cumulative Basin-Wide % Reduction	% of Basin-Wide Load	Cumulative Basin-Wide % Reduction	Basin-Wide Load (MT/yr)	Source Category % Reduction	% of Total Milestone LR by Source	Cumulative Basin-Wide % Reduction	Basin-Wide Load (MT/yr)	Source Category % Reduction	% of Total Milestone LR by Source	Cumulative Basin-Wide % Reduction	Basin-Wide Load (MT/yr)	Source Category % Reduction	% of Total Milestone LR by Source	Cumulative Basin-Wide % Reduction	Basin-Wide Load (MT/yr)	Source Category % Reduction	% of Total Milestone LR by Source	Cumulative Basin-Wide % Reduction	Basin-Wide Particle Load (Part/yr)	Source Category % Reduction	% of Total Milestone LR by Source					
Forest Upland	12	32%	0.21%	11.92	0.68%	4%	0.31%	11.88	1.00%	3%	0.47%	11.82	1.49%	3%	0.49%	11.82	1.54%	2%	0.82%	1.17E+01	2.61%	2.4%	0.02%				
Urban Upland	18	47%	3.33%	16.73	7.04%	62%	6.45%	15.55	13.61%	63%	9.74%	14.30	20.58%	63%	12.96%	13.08	22.36%	62%	21.94%	9.66E+00	46.31%	62.7%	0.65%				
Atmosphere	7	18%	1.60%	6.39	8.67%	30%	3.12%	5.81	16.93%	30%	6.05%	4.70	32.84%	30%	8.64%	4.48	35.03%	30%	11.23%	2.73E+00	60.98%	32.1%	0.33%				
Stream Channel	1	3%	0.20%	0.92	7.58%	4%	0.40%	0.85	15.17%	4%	0.80%	0.70	30.33%	4%	0.80%	0.70	30.33%	4%	1.35%	4.87E-01	51.34%	3.9%	0.04%				
<b>Total</b>	<b>38</b>	<b>100%</b>	<b>5.34%</b>	<b>35.97</b>	<b>100%</b>	<b>100%</b>	<b>10.28%</b>	<b>34.09</b>	<b>100%</b>	<b>100%</b>	<b>17.06%</b>	<b>31.52</b>	<b>100%</b>	<b>100%</b>	<b>20.88%</b>	<b>30.07</b>	<b>100%</b>	<b>100%</b>	<b>35%</b>	<b>2.457E+01</b>	<b>101.0%</b>	<b>101.0%</b>	<b>1.04%</b>				
Basin-wide load check			95%				90%				83%				79%				35.3%				64.7%				

Some error is notable in the Numeric Target calculations due to estimates used in source data provided in Clarity Model results.

## Flow-Associated Assessment

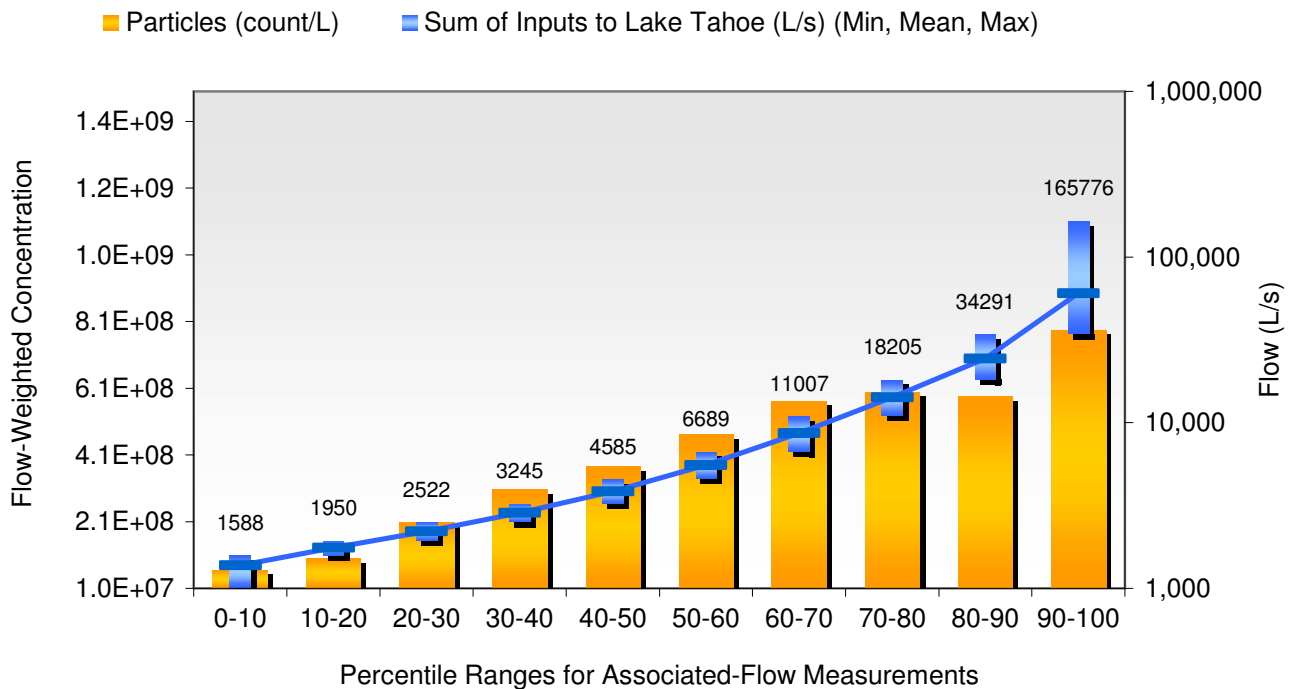
### Lake Tahoe "Clarity Challenge" TMDL

Flow: Sum of Inputs to Lake Tahoe (L/s)

Pollutant: Particles

Data from: 1/1/1990 to 12/31/2004

Flow Range	Associated Flow			Conc. (count/L)		Load (count/day)	
Percentile	Mean	Min	Max	Mean	Max	Mean	Max
0-10	1,376	1,012	1,588	6.6E+07	5.8E+08	7.9E+15	6.8E+16
10-20	1,763	1,589	1,950	1.0E+08	9.4E+08	1.5E+16	1.4E+17
20-30	2,212	1,950	2,522	2.1E+08	1.1E+09	4.0E+16	2.1E+17
30-40	2,859	2,524	3,245	3.1E+08	1.5E+09	7.6E+16	3.7E+17
40-50	3,854	3,246	4,585	3.8E+08	1.9E+09	1.3E+17	6.3E+17
50-60	5,541	4,591	6,689	4.7E+08	2.7E+09	2.3E+17	1.3E+18
60-70	8,640	6,696	11,007	5.7E+08	4.6E+09	4.3E+17	3.4E+18
70-80	14,261	11,023	18,205	6.0E+08	2.6E+09	7.4E+17	3.2E+18
80-90	24,350	18,210	34,291	5.9E+08	2.6E+09	1.2E+18	5.4E+18
90-100	60,418	34,368	165,776	7.9E+08	3.5E+09	4.1E+18	1.8E+19



**Figure C-6. Flow-associated analysis of daily maximum and average particle loads displayed as flow-weighted concentrations for the third (Clarity Challenge) milestone.**

## Seasonal Assessment

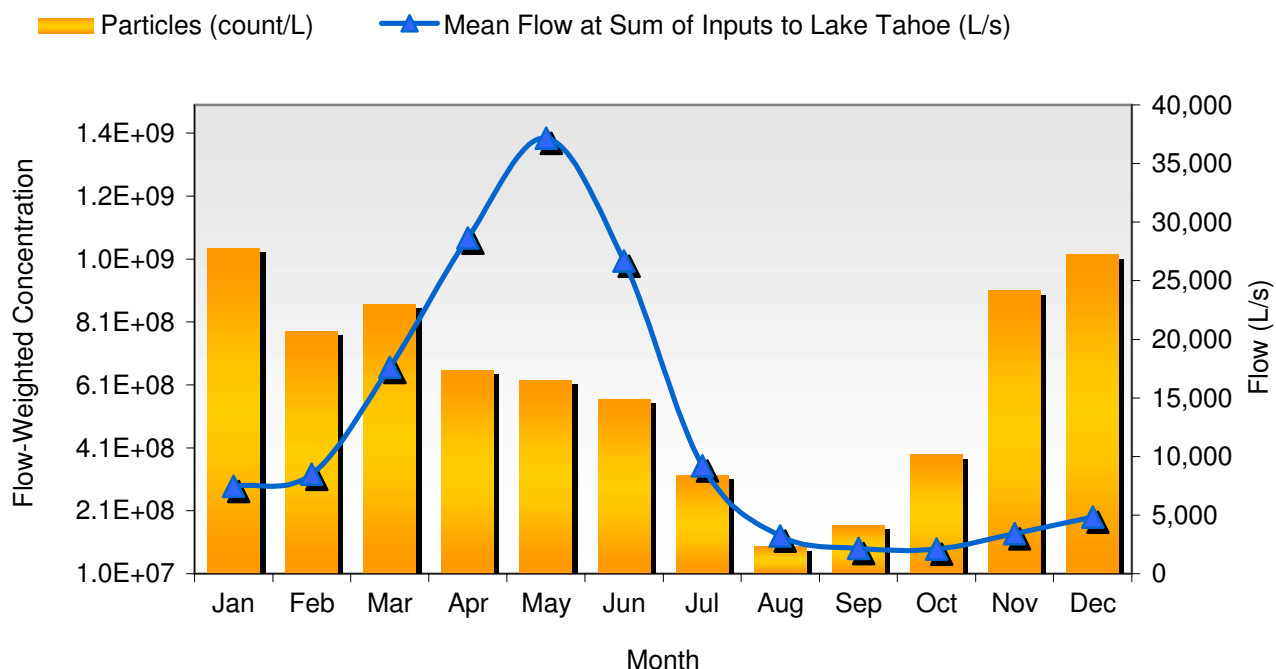
### Lake Tahoe "Clarity Challenge" TMDL

Flow: Sum of Inputs to Lake Tahoe (L/s)

Pollutant: Particles

Data from: 1/1/1990 to 12/31/2004

Time Period	Associated Flow			Conc. (count/L)		Load (count/day)	
Month	Mean	Min	Max	Mean	Max	Mean	Max
Jan	7,456	1,165	353,760	1.0E+09	3.2E+09	6.7E+17	2.1E+18
Feb	8,484	1,198	109,779	7.8E+08	2.8E+09	5.7E+17	2.0E+18
Mar	17,611	3,294	159,306	8.7E+08	4.6E+09	1.3E+18	7.0E+18
Apr	28,654	7,061	113,302	6.6E+08	2.3E+09	1.6E+18	5.8E+18
May	37,149	3,582	165,776	6.3E+08	2.1E+09	2.0E+18	6.6E+18
Jun	26,682	2,693	162,743	5.7E+08	1.3E+09	1.3E+18	3.1E+18
Jul	9,204	1,819	71,979	3.3E+08	9.4E+08	2.6E+17	7.5E+17
Aug	3,227	1,404	12,762	9.7E+07	1.6E+09	2.7E+16	4.3E+17
Sep	2,154	1,210	14,398	1.7E+08	1.6E+09	3.1E+16	2.9E+17
Oct	2,103	1,114	15,281	3.9E+08	2.3E+09	7.1E+16	4.1E+17
Nov	3,400	1,062	74,382	9.1E+08	2.7E+09	2.7E+17	7.9E+17
Dec	4,845	1,012	137,993	1.0E+09	3.3E+09	4.3E+17	1.4E+18



**Figure C-7. Seasonal analysis of daily maximum and average particle loads displayed as flow-weighted concentrations for the third (Clarity Challenge) milestone.**

## Flow-Associated Assessment

### Lake Tahoe "Clarity Challenge" TMDL

Flow: Sum of Inputs to Lake Tahoe (L/s)

Pollutant: Total Nitrogen

Data from: 1/1/1990 to 12/31/2004

Flow Range	Associated Flow			Concentration (mg/L)		Load (kg/day)	
Percentile	Mean	Min	Max	Mean	Max	Mean	Max
0-10	1,376	1,012	1,588	0.10	0.70	1.2E+04	8.4E+04
10-20	1,763	1,589	1,950	0.13	1.06	1.9E+04	1.6E+05
20-30	2,212	1,950	2,522	0.23	1.36	4.4E+04	2.6E+05
30-40	2,859	2,524	3,245	0.32	1.58	7.9E+04	3.9E+05
40-50	3,854	3,246	4,585	0.38	1.64	1.3E+05	5.5E+05
50-60	5,541	4,591	6,689	0.44	1.80	2.1E+05	8.6E+05
60-70	8,640	6,696	11,007	0.43	1.81	3.2E+05	1.3E+06
70-80	14,261	11,023	18,205	0.36	1.85	4.4E+05	2.3E+06
80-90	24,350	18,210	34,291	0.28	1.81	5.8E+05	3.8E+06
90-100	60,418	34,368	165,776	0.23	1.55	1.2E+06	8.1E+06

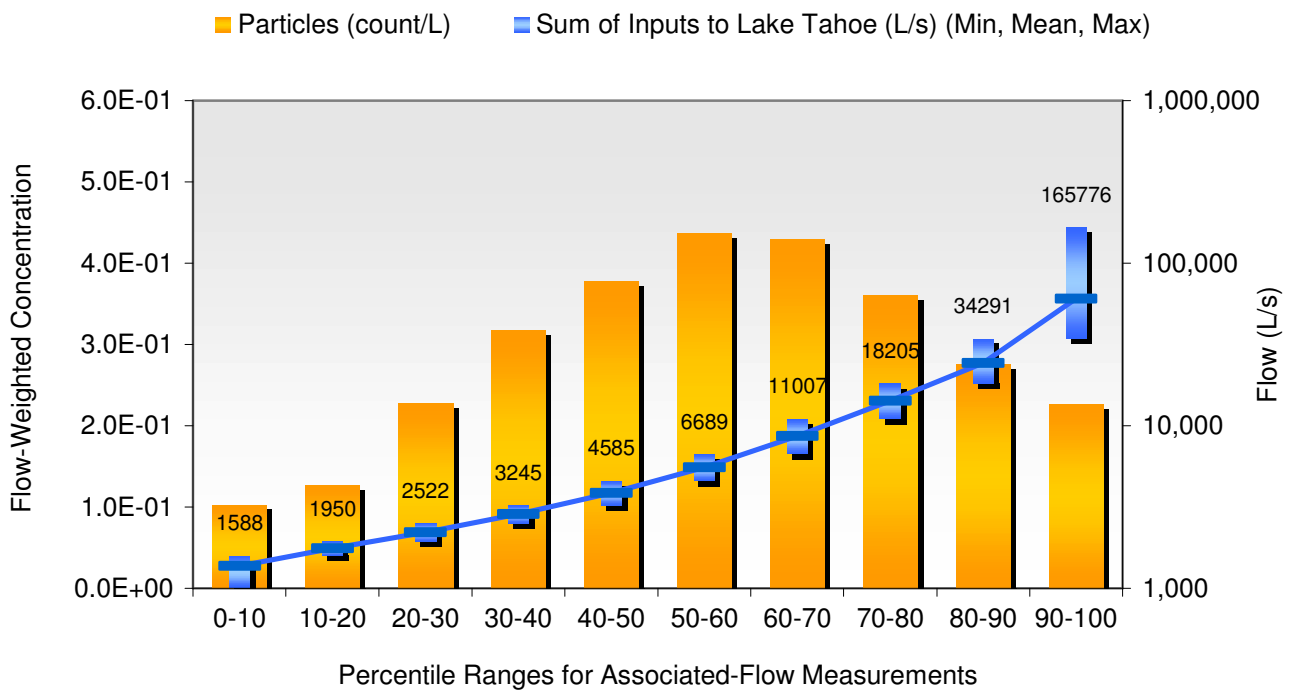


Figure C-8. Flow-associated analysis of daily maximum and average Total Nitrogen loads displayed as flow-weighted concentrations for the third (Clarity Challenge) milestone.

## Seasonal Assessment

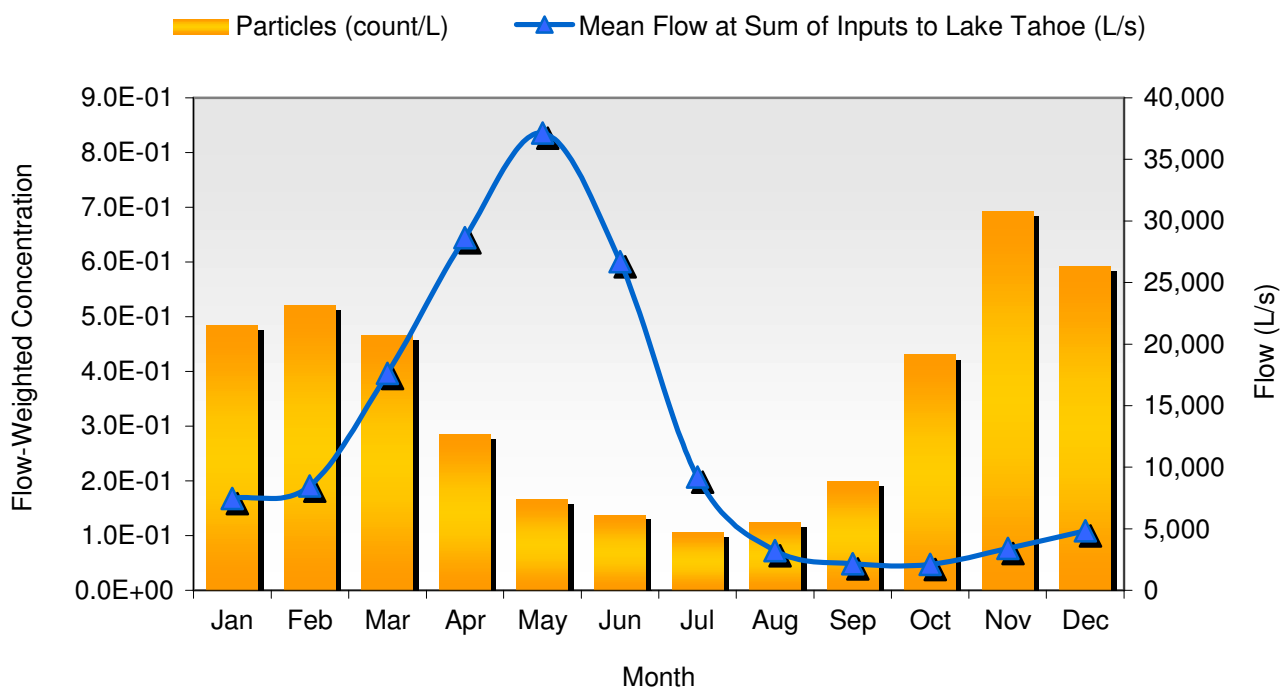
### Lake Tahoe "Clarity Challenge" TMDL

Flow: Sum of Inputs to Lake Tahoe (L/s)

Pollutant: Total Nitrogen

Data from: 1/1/1990 to 12/31/2004

Time Period	Associated Flow			Concentration (mg/L)		Load (kg/day)	
Month	Mean	Min	Max	Mean	Max	Mean	Max
Jan	7,456	1,165	353,760	0.49	1.63	3.1E+05	1.1E+06
Feb	8,484	1,198	109,779	0.52	1.41	3.8E+05	1.0E+06
Mar	17,611	3,294	159,306	0.47	1.51	7.1E+05	2.3E+06
Apr	28,654	7,061	113,302	0.29	1.29	7.1E+05	3.2E+06
May	37,149	3,582	165,776	0.17	0.93	5.4E+05	3.0E+06
Jun	26,682	2,693	162,743	0.14	1.67	3.2E+05	3.9E+06
Jul	9,204	1,819	71,979	0.11	1.23	8.5E+04	9.8E+05
Aug	3,227	1,404	12,762	0.13	1.64	3.5E+04	4.6E+05
Sep	2,154	1,210	14,398	0.20	1.58	3.7E+04	2.9E+05
Oct	2,103	1,114	15,281	0.43	1.85	7.8E+04	3.4E+05
Nov	3,400	1,062	74,382	0.69	1.81	2.0E+05	5.3E+05
Dec	4,845	1,012	137,993	0.59	1.82	2.5E+05	7.6E+05



**Figure C-9. Seasonal analysis of daily maximum and average Total Nitrogen loads displayed as flow-weighted concentrations for the third (Clarity Challenge) milestone.**



## Flow-Associated Assessment

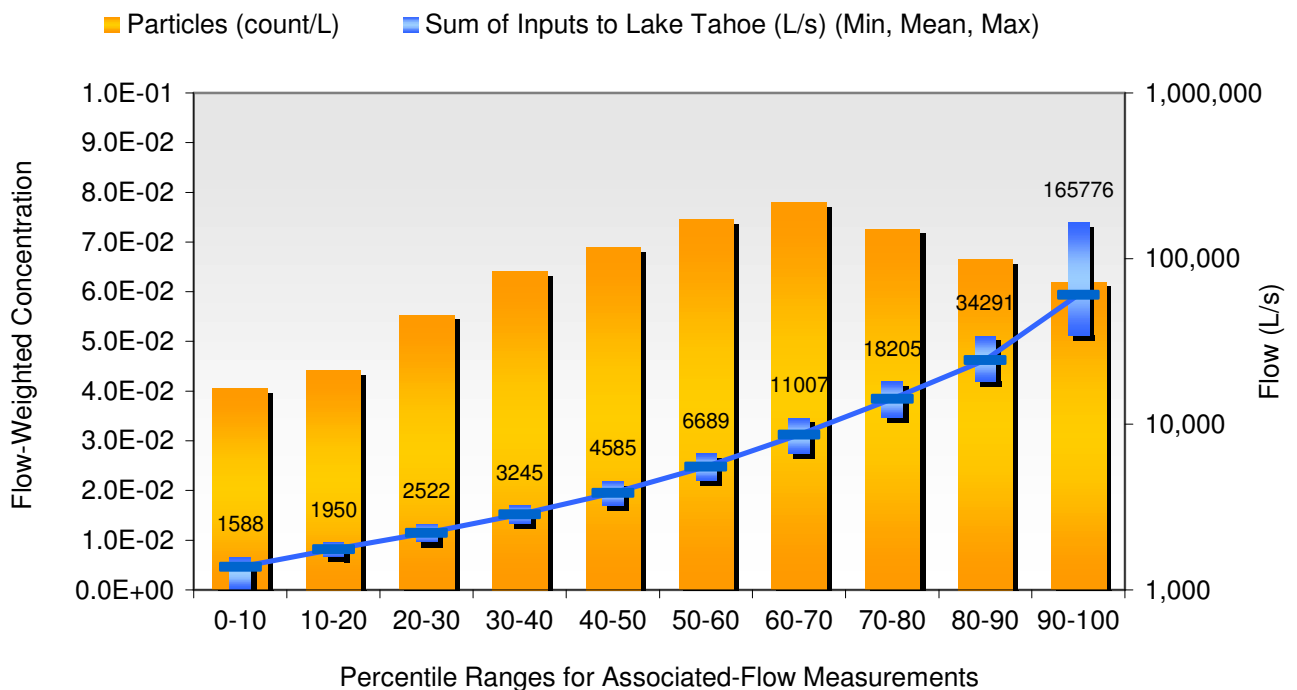
### Lake Tahoe "Clarity Challenge" TMDL

Flow: Sum of Inputs to Lake Tahoe (L/s)

Pollutant: Total Phosphorus

Data from: 1/1/1990 to 12/31/2004

Flow Range	Associated Flow			Concentration (mg/L)		Load (kg/day)		
	Percentile	Mean	Min	Max	Mean	Max	Mean	Max
0-10		1,376	1,012	1,588	0.041	0.097	4.8E+03	1.1E+04
10-20		1,763	1,589	1,950	0.044	0.133	6.7E+03	2.0E+04
20-30		2,212	1,950	2,522	0.055	0.170	1.1E+04	3.2E+04
30-40		2,859	2,524	3,245	0.064	0.214	1.6E+04	5.3E+04
40-50		3,854	3,246	4,585	0.069	0.224	2.3E+04	7.5E+04
50-60		5,541	4,591	6,689	0.075	0.229	3.6E+04	1.1E+05
60-70		8,640	6,696	11,007	0.078	0.320	5.8E+04	2.4E+05
70-80		14,261	11,023	18,205	0.073	0.202	9.0E+04	2.5E+05
80-90		24,350	18,210	34,291	0.067	0.208	1.4E+05	4.4E+05
90-100		60,418	34,368	165,776	0.062	0.185	3.2E+05	9.6E+05



**Figure C-10. Flow-associated analysis of daily maximum and average Total Phosphorus loads displayed as flow-weighted concentrations for the third (Clarity Challenge) milestone.**

## Seasonal Assessment

### Lake Tahoe "Clarity Challenge" TMDL

Flow: Sum of Inputs to Lake Tahoe (L/s)

Pollutant: Total Phosphorus

Data from: 1/1/1990 to 12/31/2004

Time Period	Associated Flow			Concentration (mg/L)		Load (kg/day)	
Month	Mean	Min	Max	Mean	Max	Mean	Max
Jan	7,456	1,165	353,760	0.088	0.320	5.7E+04	2.1E+05
Feb	8,484	1,198	109,779	0.089	0.185	6.5E+04	1.4E+05
Mar	17,611	3,294	159,306	0.088	0.247	1.3E+05	3.8E+05
Apr	28,654	7,061	113,302	0.070	0.185	1.7E+05	4.6E+05
May	37,149	3,582	165,776	0.056	0.120	1.8E+05	3.9E+05
Jun	26,682	2,693	162,743	0.050	0.146	1.2E+05	3.4E+05
Jul	9,204	1,819	71,979	0.043	0.144	3.4E+04	1.1E+05
Aug	3,227	1,404	12,762	0.042	0.158	1.2E+04	4.4E+04
Sep	2,154	1,210	14,398	0.049	0.199	9.2E+03	3.7E+04
Oct	2,103	1,114	15,281	0.069	0.229	1.3E+04	4.2E+04
Nov	3,400	1,062	74,382	0.100	0.229	2.9E+04	6.7E+04
Dec	4,845	1,012	137,993	0.096	0.255	4.0E+04	1.1E+05

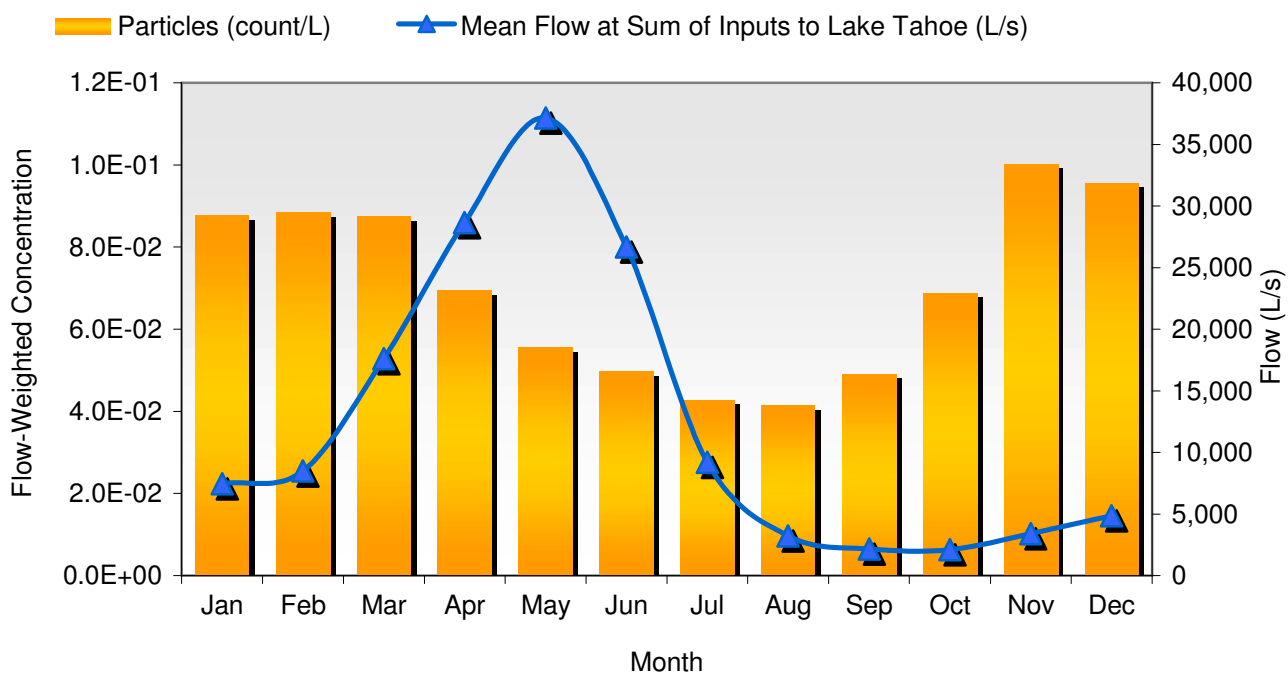


Figure C-11. Seasonal analysis of daily maximum and average Total Phosphorus loads displayed as flow-weighted concentrations for the third (Clarity Challenge) milestone.