

2013-2014 Soft Bottom Channels

Reach 1
Bell Creek (MTD 963) Main Channel Inlet

Before Photos 8/21/13



After Photos 12/6/13



2013-2014 Soft Bottom Channels

Reach 2 Dry Canyon - Calabasas (PD T1845)

Before Photos 8/22/13



After Photos 12/6/13



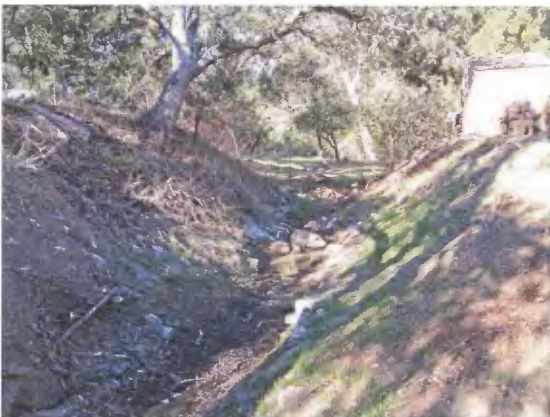
2013-2014 Soft Bottom Channels

Reach 3 Santa Susana Creek Main Channel Inlet

Before Photos 8/21/13



After Photos 12/24/13



2013-2014 Soft Bottom Channels

Reach 4 Browns Creek

Before Photos 8/21/13



After Photos 12/24/13



2013-2014 Soft Bottom Channels

Reach 5 Caballero Main Channel Inlet (West Fork)

Before Photos 8/21/13



After Photos 12/6/13



2013-2014 Soft Bottom Channels

Reach 6 Caballero Creek Main Channel Inlet (East Fork)

Before Photos 8/21/13



After Photos 12/6/13



2013-2014 Soft Bottom Channels

Reach 7
Bull Creek Main Channel Outlet

NO WORK DONE

Before Photos 8/21/13



After Photos 12/24/13



2013-2014 Soft Bottom Channels

Reach 8
Project 470 Outlet

Before Photos 8/21/13



After Photos 12/24/13



2013-2014 Soft Bottom Channels

Reach 9
Project 106 Outlet

Before Photos 8/21/13



After Photos 12/24/13



2013-2014 Soft Bottom Channels

Reach 10
Project No. 469

Before Photos 8/21/13



After Photos 12/24/13



2013-2014 Soft Bottom Channels

**Reach 10 (Continued)
Project No. 469**

Before Photos 8/21/13



After Photos 12/24/13



2013-2014 Soft Bottom Channels

Reach 12 Haines Canyon Main Channel Outlet

Before Photos 9/6/13



After Photos 11/25/13



2013-2014 Soft Bottom Channels

Reach 13
Project No. 5215 Unit 1

Before Photos 8/23/13



After Photos 12/23/13



2013-2014 Soft Bottom Channels

Reach 14
May Channel
(Main Channel Outlet into Pacoima Canyon)

Before Photos 8/6/13



After Photos 11/25/13



2013-2014 Soft Bottom Channels

Reach 15 Pacoima Wash

Before Photos 8/21/13



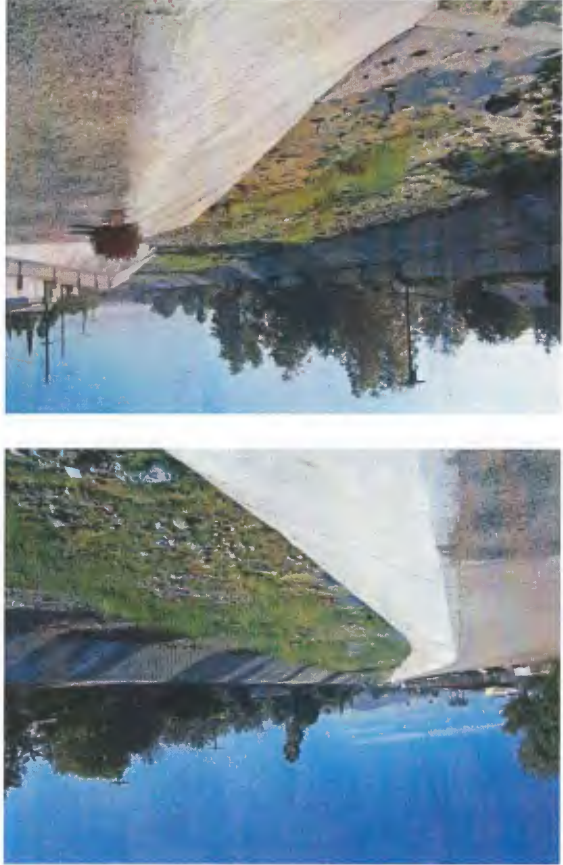
2013-2014 Soft Bottom Channels

**Reach 15 (Continued)
Pacolma Wash**

After Photos 12/24/13



Before Photos 8/21/13



2013-2014 Soft Bottom Channels

Reach 16 Verdugo Wash – Las Barras Canyon (Channel Inlet)

Before Photos 8/23/13



After Photos 12/23/13



2013-2014 Soft Bottom Channels

Reach 18 Engleheard Channel

Before Photos 8/23/13



2013-2014 Soft Bottom Channels

Reach 19 Pickens Canyon

Before Photos 8/23/13



After Photos 12/23/13



2013-2014 Soft Bottom Channels

Reach 20
Webber Channel (stream at private bridge)

Before Photos 8/23/13



After Photos 12/23/13



2013-2014 Soft Bottom Channels

Reach 21 Webber Channel (Main Channel Inlet d/s bridge)

Before Photos 8/23/13



After Photos 12/23/13



2013-2014 Soft Bottom Channels

Reach 22 Halls Canyon

Before Photos 8/23/13



After Photos 12/23/13



2013-2014 Soft Bottom Channels

Reach 24
Compton Creek – Los Angeles River to COE STA 199+31

Before Photos 8/14/13



After Photos 12/27/13



2013-2014 Soft Bottom Channels

**Reach 24 (Continued)
Compton Creek – Los Angeles River to COE STA 199+31**

After Photos 12/27/13



Before Photos 8/14/13



2013-2014 Soft Bottom Channels

Reach 25
Los Angeles River – East – Willow to PCH

Before Photos 8/14/13



After Photos 12/30/13



2013-2014 Soft Bottom Channels

**Reach 25 (Continued)
Los Angeles River – East – Willow to PCH**



After Photos 12/30/13



Before Photos 8/14/13



2013-2014 Soft Bottom Channels

Reach 25 (Continued)
Los Angeles River – West – Willow to PCH

Before Photos 8/14/13



After Photos 12/30/13



2013-2014 Soft Bottom Channels

**Reach 25 (Continued)
Los Angeles River – West – Willow to PCH**

After Photos 12/30/13



Before Photos 8/14/13



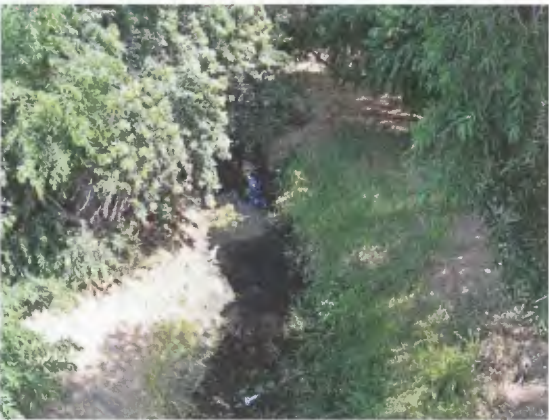
2013-2014 Soft Bottom Channels

Reach 26

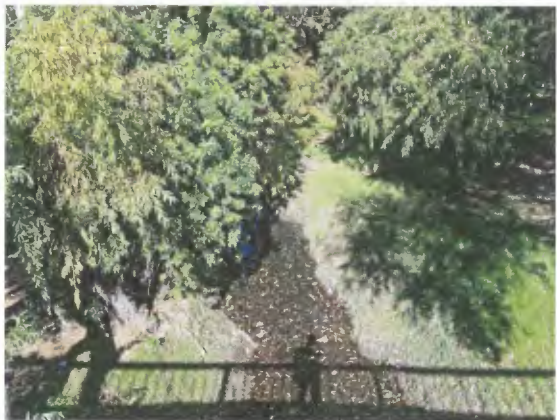
Project 74

400' d/s Artesia Blvd. to 550' u/s Artesia Blvd.

Before Photos 8/15/13



After Photos 12/24/13



2013-2014 Soft Bottom Channels

Reach 26 (Continued)

**Project 74
400' d/s Artesia Blvd. to 550' u/s Artesia Blvd.**

After Photos 12/24/13



Before Photos 8/15/13



2013-2014 Soft Bottom Channels

Reach 27
Wilmington Drain
110 Freeway to s/o PCH

NO WORK DONE

Photos 8/6/13



2013-2014 Soft Bottom Channels

**Reach 27 (Continued)
Wilmington Drain
110 Freeway to s/o PCH**

Photos 8/6/13



2013-2014 Soft Bottom Channels

Reach 28
Triunfo Creek (PD T2200)

Before Photos 8/22/13



After Photos 12/4/13



2013-2014 Soft Bottom Channels

Reach 29
Las Virgenes Creek (PD T1684) Main Channel Inlet

Before Photos 8/22/13



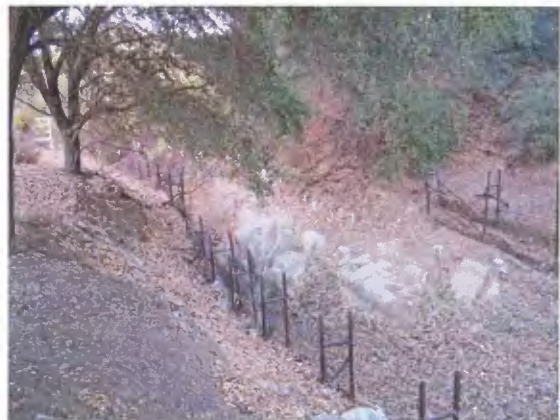
2013-2014 Soft Bottom Channels

Reach 32 Stokes Canyon Channel (PD T043)

Before Photos 8/22/13



After Photos 12/04/13



2013-2014 Soft Bottom Channels

**Reach 32 (Continued)
Stokes Canyon Channel (PD T043)**

Before Photos 8/22/13



After Photos 12/04/13



2013-2014 Soft Bottom Channels

Reach 33
Medea Creek (PDT1378 U.1)

NO WORK DONE

Photos 8/22/13



2013-2014 Soft Bottom Channels

Reach 34 Medea Creek (PD T1005) Main Channel Outlet

Before Photos 8/22/13



2013-2014 Soft Bottom Channels

Reach 35
Medea Creek Main Channel Inlet – Under Route 101

Before Photos 8/22/13



After Photos 12/04/13



2013-2014 Soft Bottom Channels

Reach 36
Chesebro Main Channel Inlet

Before Photos 8/22/13



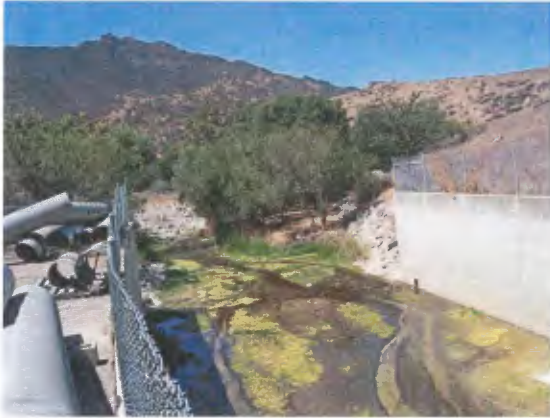
After Photos 12/04/13



2013-2014 Soft Bottom Channels

Reach 37
Medea Creek / Cheseboro Creek Outlet

Before Photos 8/22/13



After Photos 12/04/13



2013-2014 Soft Bottom Channels

Reach 38 Lindero Main Channel Outlet

Before Photos 8/22/13



After Photos 12/04/13



2013-2014 Soft Bottom Channels

Reach 39
Beatty Channel Outlet at San Gabriel River

Before Photos 8/26/13



After Photos 11/25/13



2013-2014 Soft Bottom Channels

Reach 40A
San Gabriel River – Santa Fe Dam – 1-10 Fwy

Before Photos 8/29/13



2013-2014 Soft Bottom Channels

**Reach 40A (Continued)
San Gabriel River – Santa Fe Dam – 1-10 Fwy**

After Photos 12/23/13



Before Photos 8/29/13



2013-2014 Soft Bottom Channels

Reach 40B
San Gabriel River – 1-10 Fwy – Theines

Before Photos 8/23/13



After Photos 12/23/13



2013-2014 Soft Bottom Channels

Reach 41 Walnut Creek – Baldwin Park to San Gabriel River

Before Photos 8/23/13



2013-2014 Soft Bottom Channels

Reach 42 San Jose Creek

Before Photos 8/23/13

After Photos 12/02/13



2013-2014 Soft Bottom Channels

Reach 43
San Gabriel River – Upper
Whittier Narrows Dam to Beverly Blvd.

Before Photos 8/29/13



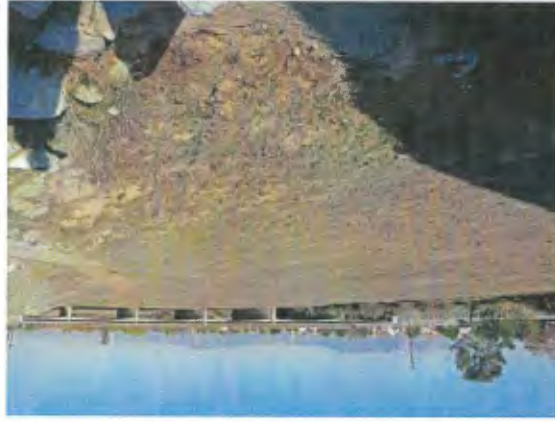
After Photos 12/23/13



2013-2014 Soft Bottom Channels

**Reach 43 (Continued)
San Gabriel River – Upper
Whittier Narrows Dam to Beverly Blvd.**

After Photos 12/23/13



Before Photos 8/29/13



2013-2014 Soft Bottom Channels

Reach 43 (Continued)
San Gabriel River – Upper
Whittier Narrows Dam to Beverly Blvd.

Before Photos 8/29/13



After Photos 12/23/13



2013-2014 Soft Bottom Channels

Reach 44
San Gabriel River
Beverly Blvd. to Firestone Blvd.

Before Photos 8/29/13



After Photos 12/23/13



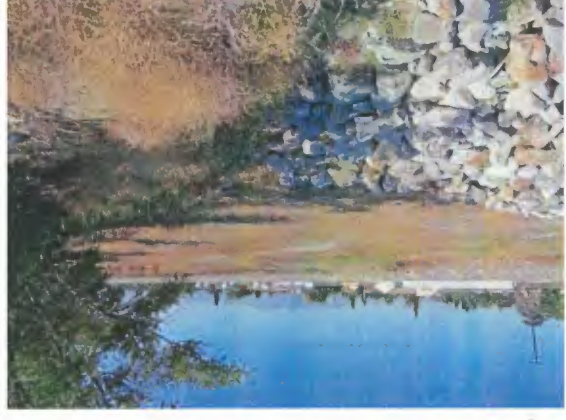
2013-2014 Soft Bottom Channels

**Reach 44 (Continued)
San Gabriel River
Beverly Blvd. to Firestone Blvd.**

After Photos 12/23/13



Before Photos 8/29/13



2013-2014 Soft Bottom Channels

Reach 44 (Continued)
San Gabriel River
Beverly Blvd. to Firestone Blvd.

Before Photos 8/29/13



After Photos 12/23/13



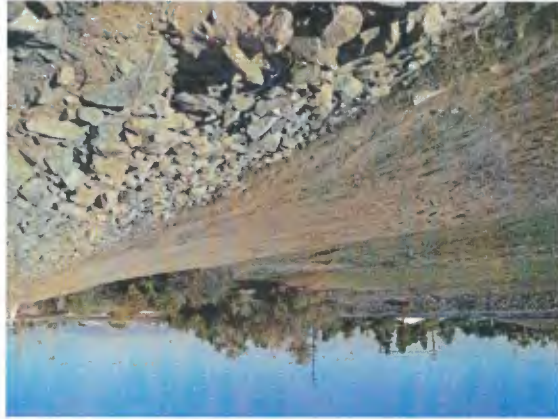
2013-2014 Soft Bottom Channels

**Reach 44 (Continued)
San Gabriel River
Beverly Blvd. to Firestone Blvd.**

Before Photos 8/29/13



After Photos 12/23/13



2013-2014 Soft Bottom Channels

Reach 44 (Continued)
San Gabriel River
Beverly Blvd. to Firestone Blvd.

Before Photos 8/29/13



After Photos 12/23/13



2013-2014 Soft Bottom Channels

Reach 45
Sand Canyon (PD T1307) Main Channel Inlet

Before Photos 8/28/13



After Photos 11/20/13



2013-2014 Soft Bottom Channels

Reach 46
Sand Canyon (PD T1307) Main Channel Outlet

Before Photos 8/28/13



After Photos 11/20/13



2013-2014 Soft Bottom Channels

Reach 47
Santa Clara River (PD 1733 Unit 1)

Before Photos 8/28/13



After Photos 11/20/13



2013-2014 Soft Bottom Channels

Reach 48
Mint Canyon Channel
Between Sierra Ave. and Adon Ave.

Before Photos 8/28/13



After Photos 11/20/13



2013-2014 Soft Bottom Channels

Reach 49
Mint Canyon Channel
Between Adon Ave. and Scherzinger Ln.

Before Photos 8/28/13



After Photos 11/20/13



2013-2014 Soft Bottom Channels

Reach 50
Mint Canyon Channel
Between Solamint and Soledad

Before Photos 8/28/13



After Photos 11/20/13



2013-2014 Soft Bottom Channels

Reach 51
Mint Canyon Main Channel Outlet (PD 1984) /
Santa Clara River – Main Channel

Before Photos 8/28/13



After Photos 11/20/13



2013-2014 Soft Bottom Channels

Reach 52

Sierra Hwy Rd. Drainage (CDR 523.203)

Before Photos 8/28/13



After Photos 11/20/13



2013-2014 Soft Bottom Channels

Reach 53
Santa Clara River Non-main Channel (PD 832)
Main Channel Inlet

Before Photos 8/28/13



After Photos 11/20/13



2013-2014 Soft Bottom Channels

Reach 54
Santa Clara River Non-Main Channel
(PD 832) Main Channel Outlet

Before Photos 8/28/13



After Photos 11/20/13



2013-2014 Soft Bottom Channels

Reach 55
Santa Clara River Channel
(PD's 910, 1758, & 1562 Unit 2)

Before Photos 8/28/13



After Photos 11/20/13



2013-2014 Soft Bottom Channels

Reach 56
Santa Clara River (PD 832)

Before Photos 8/28/13



After Photos 11/20/13



2013-2014 Soft Bottom Channels

Reach 57
Whites Canyon (PD T704 Main Channel Inlet)

Before Photos 8/28/13



After Photos 11/20/13



2013-2014 Soft Bottom Channels

Reach 58
Santa Clara River (PD 374)

Before Photos 8/28/13



After Photos 11/20/13



2013-2014 Soft Bottom Channels

Reach 59
Santa Clara River (PD 374)*

Before Photos 8/28/13



After Photos 11/20/13



*Note: This reach number may not appear on the SBC list.

2013-2014 Soft Bottom Channels

Reach 60
Santa Clara River (PD 1339)

Before Photos 8/28/13



2013-2014 Soft Bottom Channels

Reach 61
Santa Clara River (PD 659)
d/s new Soledad Canyon Road Bridge

Before Photos 8/28/13



After Photos 11/20/13



2013-2014 Soft Bottom Channels

Reach 62
Santa Clara River (PD 754)

Before Photos 8/28/13



After Photos 11/20/13



2013-2014 Soft Bottom Channels

Reach 63
Oak Avenue Road Drainage (CDR 523.081)

Before Photos 8/28/13



After Photos 11/20/13



2013-2014 Soft Bottom Channels

Reach 64
Soledad Canyon Road Drainage (CDR 523.071 D Outlet)

Before Photos 8/28/13



After Photos 11/20/13



2013-2014 Soft Bottom Channels

Reach 66
Santa Clara River (PD 1538)

Before Photos 8/28/13



After Photos 11/20/13



2013-2014 Soft Bottom Channels

Reach 67
Bouquet Canyon Upper (PD's 1201, 802, 700B and 625B)

Before Photos 8/22/13

After Photos 12/24/13



2013-2014 Soft Bottom Channels

Reach 69
Bouquet Canyon Middle (PD's 722, 773, 1365, 1065 and 451)

Before Photos 8/22/13



After Photos 12/24/13



2013-2014 Soft Bottom Channels

Reach 70
Bouquet Canyon Lower (PD's 544 and 345)

Before Photos 8/22/13



After Photos 12/24/13



2011-2012 Soft Bottom Channels

**Reach 70 (Continued)
Bouquet Canyon Lower (PD's 544 and 345)**

After Photos 12/24/13



Before Photos 8/22/13



2013-2014 Soft Bottom Channels

Reach 71
Santa Clara River Main Channel (PD 1946)

NO WORK DONE

Photos 8/22/13



2013-2014 Soft Bottom Channels

Reach 72
South Fork – Santa Clara River
(Smizer Ranch Main Channel Inlet)

Before Photos 8/22/13



After Photos 12/24/13



2013-2014 Soft Bottom Channels

Reach 73
Wildwood Canyon Channel
(PD T361 Main Channel Inlet)

Before Photos 8/22/13



After Photos 12/24/13



2013-2014 Soft Bottom Channels

Reach 74 Wildwood Canyon Channel (PD T361)

Before Photos 8/22/13



After Photos 12/24/13



2013-2014 Soft Bottom Channels

Reach 75
South Fork – SCR (PD's 725, 916, 1041 and 1300)

Before Photos 8/22/13



2013-2014 Soft Bottom Channels

**Reach 75 (Continued)
South Fork – SCR (PD's 725, 916, 1041 and 1300)**

After Photos 12/24/13



Before Photos 8/22/13



2013-2014 Soft Bottom Channels

Reach 75 (Continued)
South Fork – SCR (PD's 725, 916, 1041 and 1300)

Before Photos 8/22/13



After Photos 12/24/13



2013-2014 Soft Bottom Channels

Reach 76
Pico Canyon (PD 813)

Before Photos 8/15/13



2013-2014 Soft Bottom Channels

Reach 77 Newhall Creek Outlet

Before Photos 8/15/13



After Photos 11/26/13



2013-2014 Soft Bottom Channels

Reach 78
Placerita Creek

Before Photos 8/15/13



After Photos 11/26/13



2013-2014 Soft Bottom Channels

Reach 79
South Fork – Santa Clara River
(Valencia Blvd. Bridge Stabilizer)

Before Photos 8/22/13



After Photos 12/24/13



2013-2014 Soft Bottom Channels

Reach 80
South Fork – Santa Clara River (PD 1947 and 1946)

Before Photos 8/22/13



After Photos 12/24/13



2011-2012 Soft Bottom Channels

**Reach 80 (Continued)
South Fork – Santa Clara River (PD 1947 and 1946)**

Before Photos 8/22/13



After Photos 12/24/13



2013-2014 Soft Bottom Channels

Reach 82
Santa Clara River Main Channel (PD 2278)

Before Photos 8/22/13



2011-2012 Soft Bottom Channels

**Reach 82 (Continued)
Santa Clara River Main Channel (PD 2278)**



After Photos 12/24/13



Before Photos 8/22/13

2013-2014 Soft Bottom Channels

Reach 86 Violin Canyon Main Channel Outlet

Before Photos 8/15/13



After Photos 11/26/13



2013-2014 Soft Bottom Channels

Reach 87

Castaic – The Old Road Drainage (CDR 525.021D) Outlet

Before Photos 8/15/13



After Photos 11/26/13



2013-2014 Soft Bottom Channels

Reach 88
Hasley Canyon Upper (PD T1496)

Before Photos 8/15/13



After Photos 11/26/13



2013-2014 Soft Bottom Channels

Reach 89
Hasley Canyon South Fork (PD T1496)

Before Photo 8/15/13



After Photo 11/26/13



2013-2014 Soft Bottom Channels

Reach 90
Hasley Canyon Lower (North Fork PD T1496)

Before Photos 8/15/13



After Photos 11/26/13



2013-2014 Soft Bottom Channels

Reach 91
San Martinez Chiquito u/s Keningston Road

Before Photos
8/15/13



After Photos 11/26/13



2013-2014 Soft Bottom Channels

Reach 92
San Martinez Chiquito Unnamed Tributary,
u/s of Kennington Road

Before Photos 8/15/13



After Photos
11/26/13



2013-2014 Soft Bottom Channels

Reach 93
San Martinez Chiquito – Kennington Road to Val Verde Park

Before Photos 8/15/13



After Photos 11/26/13



2013-2014 Soft Bottom Channels

Reach 94

San Martinez Chiquito Val Verde Park to d/s of Madison Street

Before Photos 8/15/13



After Photos 11/26/13



2011-2012 Soft Bottom Channels

**Reach 94 (Continued)
San Martinez Chiquito Val Verde Park to d/s of Madison Street**

Before Photos 8/23/11



After Photos 11/29/11



2013-2014 Soft Bottom Channels

Reach 95
Project No. 1224

Before Photos 8/30/13



After Photos 12/24/13



2013-2014 Soft Bottom Channels

Reach 96
PD 1591 Calabasas

Before Photos 8/22/13



After Photos 12/06/13



2013-2014 Soft Bottom Channels

Reach 97
Castaic Creek – PD 1982

Before Photos 8/15/13



After Photos 11/26/13



2013-2014 Soft Bottom Channels

Reach 98 Walnut Creek – Channel Inlet

Before Photos 8/26/13



After Photos 12/23/13



2013-2014 Soft Bottom Channels

**Reach 99
Kagel Canyon**

Before Photos 8/23/13



After Photos 12/23/13



2011-2012 Soft Bottom Channels

**Reach 99 (Continued)
Kagel Canyon**

After Photos 12/23/13



Before Photos 8/23/13



2013-2014 Soft Bottom Channels

Reach 100
Dry Canyon Calabasas

Before Photos 8/22/13

