

## **US Army Corps of Engineers®**

*LOS ANGELES DISTRICT*

*Operations Division*

*915 Wilshire Blvd, 11<sup>th</sup> Floor*

*Los Angeles, CA. 90017*

**NOTIFICATION:** Pursuant to Section II.C.2.b of the May 12, 2017, Memorandum of Understanding (MOU) Between the United States Army Corps of Engineers, Los Angeles District (Corps) and the California Regional Water Quality Control Board, Los Angeles Region (LARWQCB), concerning Operation, Maintenance, Repair, Replacement, and Rehabilitation of the Los Angeles County Drainage Area Project in Waters of the United States.

**SUBJECT:** In channel construction to repair/restore to the as-built condition a 4 foot diameter hole in the grouted stone on the eastside levee embankment of the Los Angeles River (LAR).

**PROJECT LOCATION:** Located within reach 4D, north of Los Feliz, at channel station 280+00 (34 08' 15.07" N, 118 16' 30.89" W) in the Glendale Narrows section of the Los Angeles River(LAR). See Figure 1 depicting river reaches. See Figure 2 for specific location of concrete hole.

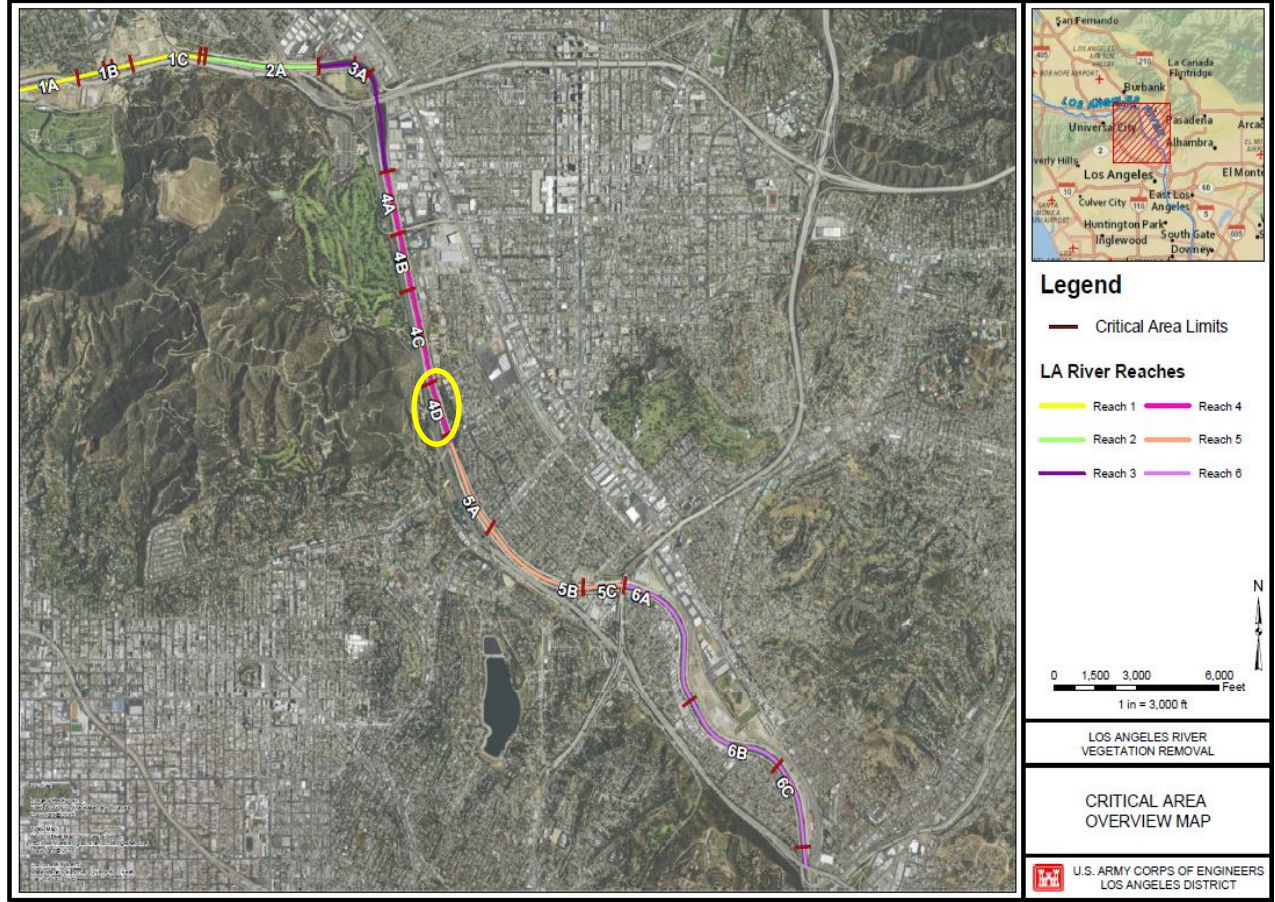
**JUSTIFICATION:** The LAR channel is a flood risk management structure. The repairs are necessary to restore the integrity of the levee and channel structure and to ensure they function as designed in a storm event. If not repaired, the void leaves the earthen levee susceptible to being washed out during a major flood event. This type of event would likely cause significant property damage in the millions of dollars.

**PROPOSED SCHEDULE:** Activities identified in this notification will start (1) 45 days of receipt of this notification or (2) LARWQCB concurs the maintenance activities described below may proceed. We anticipate it will take four days to complete construction activities. Work will take place between the hours of 0700-1700 is anticipated to begin 1 October 2018 or sooner with the LARWQBC's consent.

CESPL-OP

SUBJECT: Department of the Army Notification of Repairing Hole in Levee Embankment at Station 280+00 in the Glendale Narrows section of the Los Angeles River.

Figure 1. Los Angeles River - Glendale Narrows Map Overview



CESPL-OP

SUBJECT: Department of the Army Notification of Repairing Hole in Levee Embankment at Station 280+00 in the Glendale Narrows section of the Los Angeles River.

**Figure 2. Los Angeles River –Project Area**



**Figure 3. Los Angeles River – Hole in Levee Embankment**



CESPL-OP

SUBJECT: Department of the Army Notification of Repairing Hole in Levee Embankment at Station 280+00 in the Glendale Narrows section of the Los Angeles River.

**ACTIVITIES DESCRIPTION:** Activity will remove existing damaged grouted stone embankment with a backhoe to clear unstable or loose pieces from the work area. Cleared/loose concrete will be placed directly into a dump truck and hauled offsite for disposal. There would be no storing/staging of concrete debris within the LAR. Purchased rock would be placed directly in hole after the hole is cleared out. Following initial removal, the hole or void will be filled by strategically placing purchased rock using a backhoe. Once filled with rock, a cement mixer will fill the hole with grout. Work crew will vibrate grout and apply a broom finish to the embankment. Finally, the work crew will spray curing compound on the grout which will take 24 hours to set. This repair work will involve (1) work truck, (1) backhoe, (1) mixer truck, and (1) dump truck.

**Best Management Practices (BMPs) to be Implemented to Avoid and/or Minimize Impacts to Jurisdictional Waters of the United States:** 1-6 and 9 recommended BMP's listed under Exhibit B of Attachment A – MOU between the US Army Corps of Engineers, Los Angeles District and the California Regional Water Quality Board, Los Angeles Region concerning Operation, Maintenance, Repair, Replacement, and Rehabilitation of the Los Angeles County Drainage Area Project in waters of the U.S. will be used for this ongoing maintenance activity.

**APPROVED BY:**

\_\_\_\_\_

Date: 14 August 2018

Lillian D. Doherty  
Acting Chief  
Operations Division  
Los Angeles District, U.S. Army Corps of Engineers