

Southern California Groundwater Study

Prof. Hilda Blanco, Dr. E. Maggioni, A. Valdez
Center for Sustainable Cities
Price School of Public Policy
University of Southern California

11/17/2015

CSC Southern California Groundwater Study Team

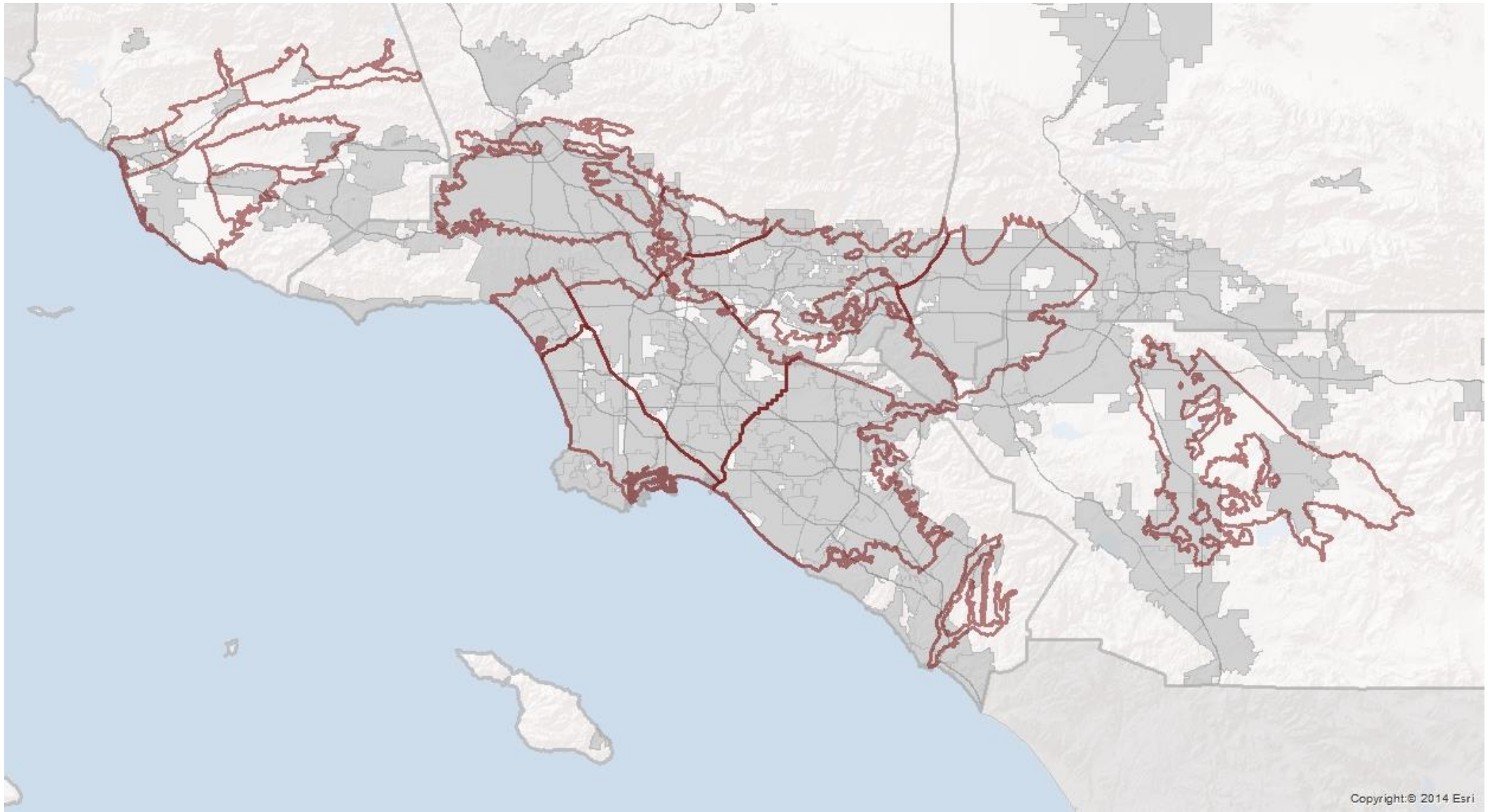
- Dr. Hilda Blanco
- Dr. Elena Maggioni
- Arnold Valdez, Research Assistant
- Patrick Cousineau, Research Assistant
- Raul Santiago, Research Assistant
- Cassie Gogreve
- Kyle Coulam

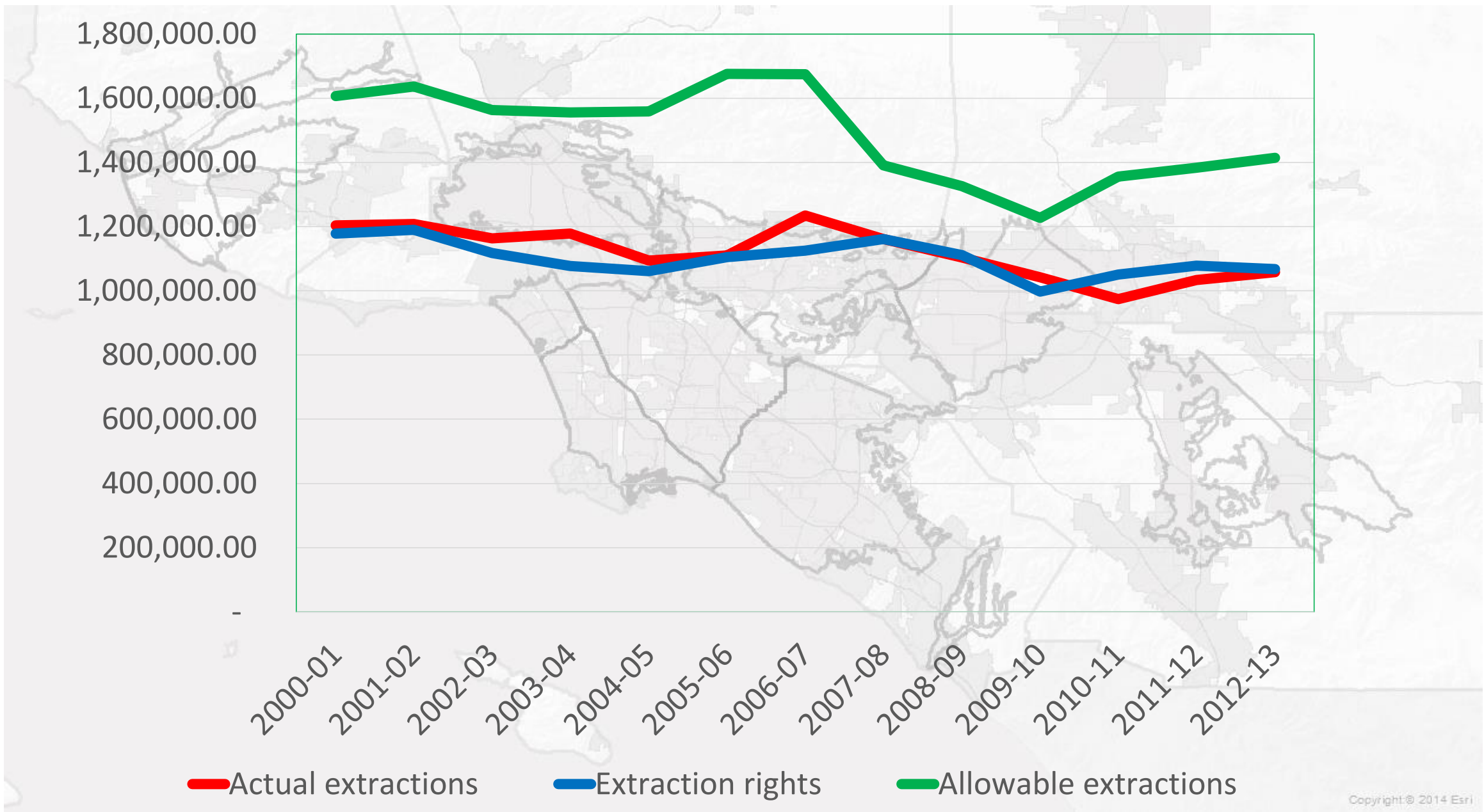
Outline

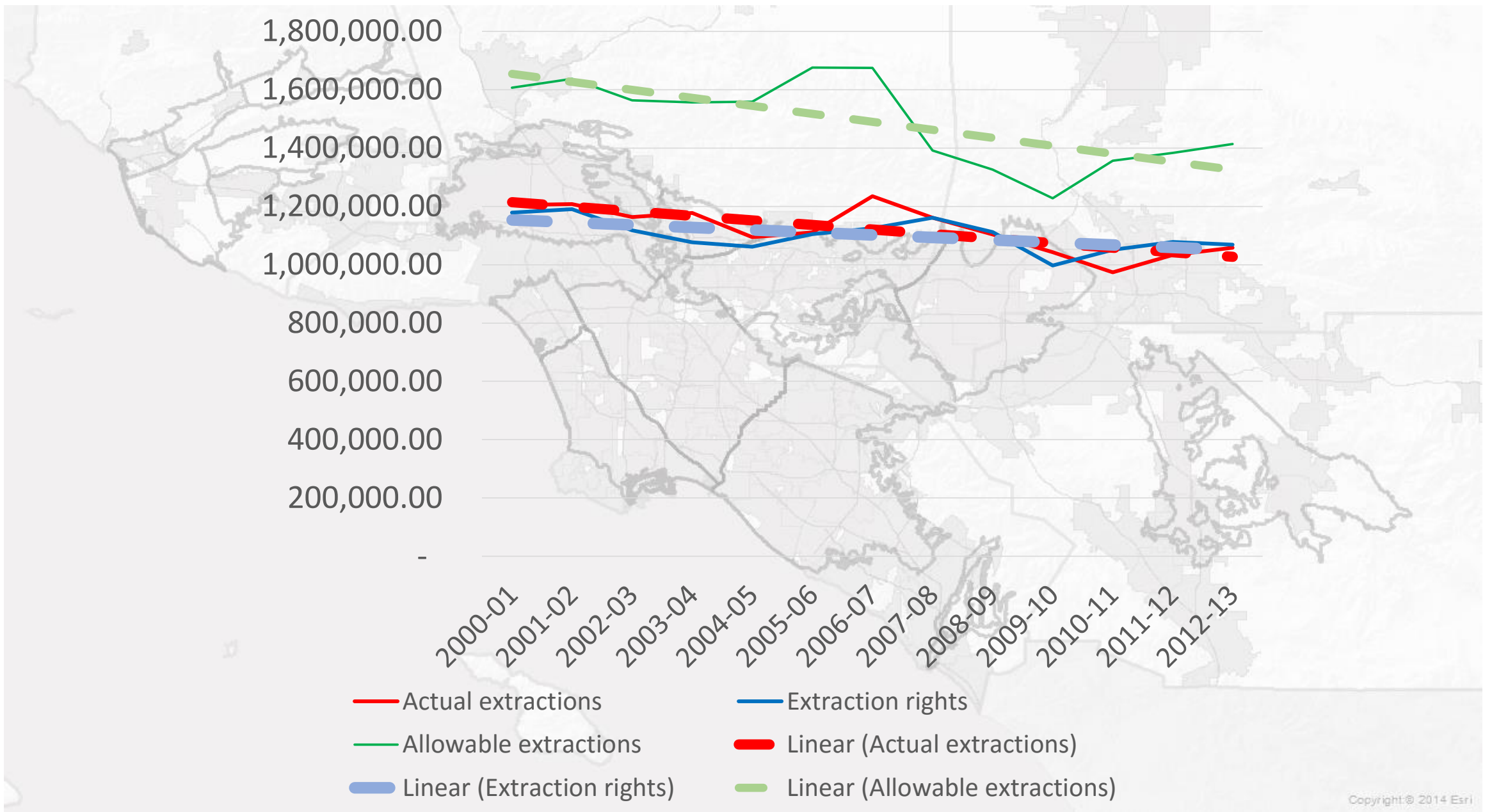
- Purpose and scope of the research
- Methods
- Data collected
- Description of the results

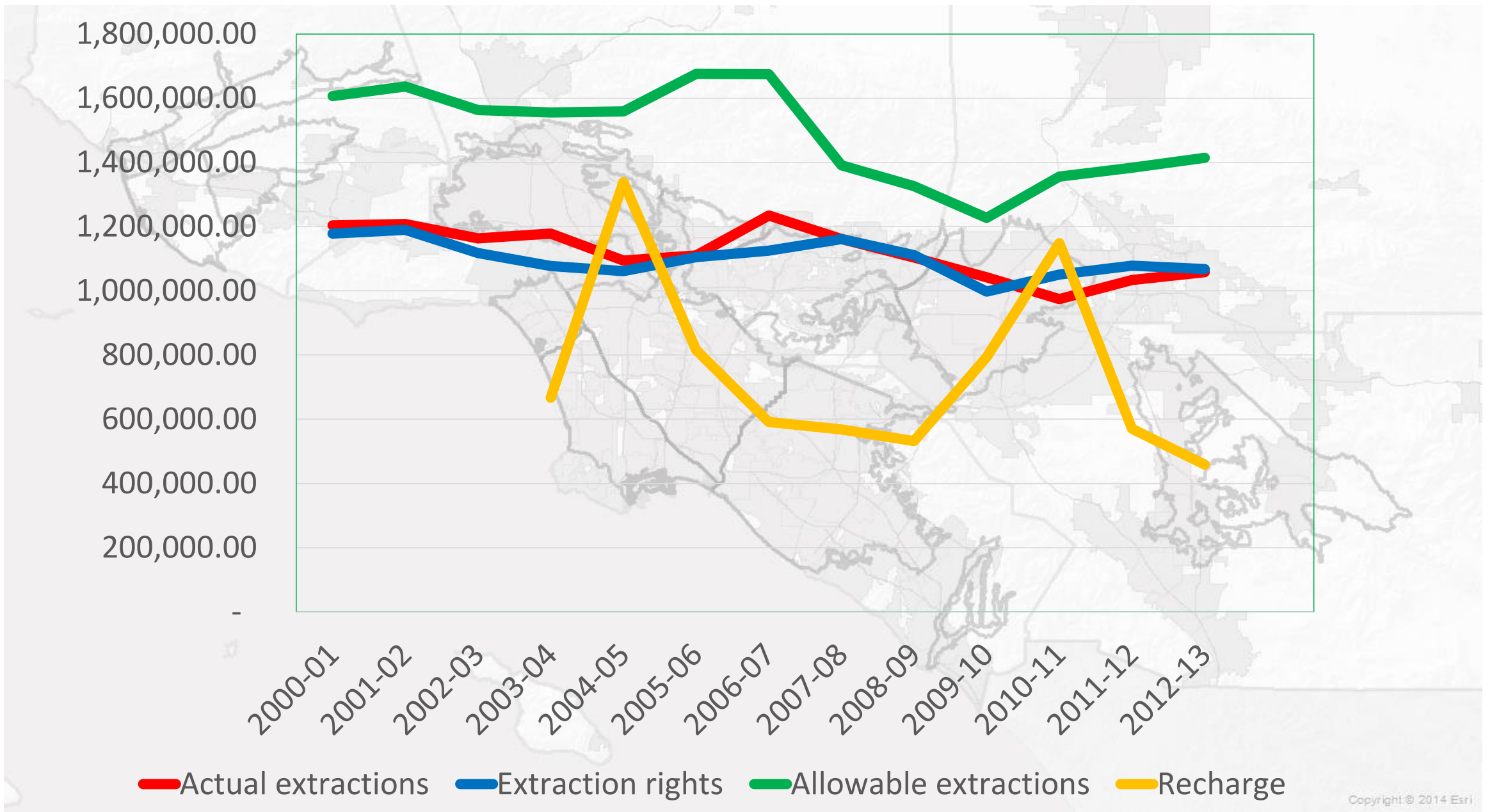
Groundwater Strategy for Southern California

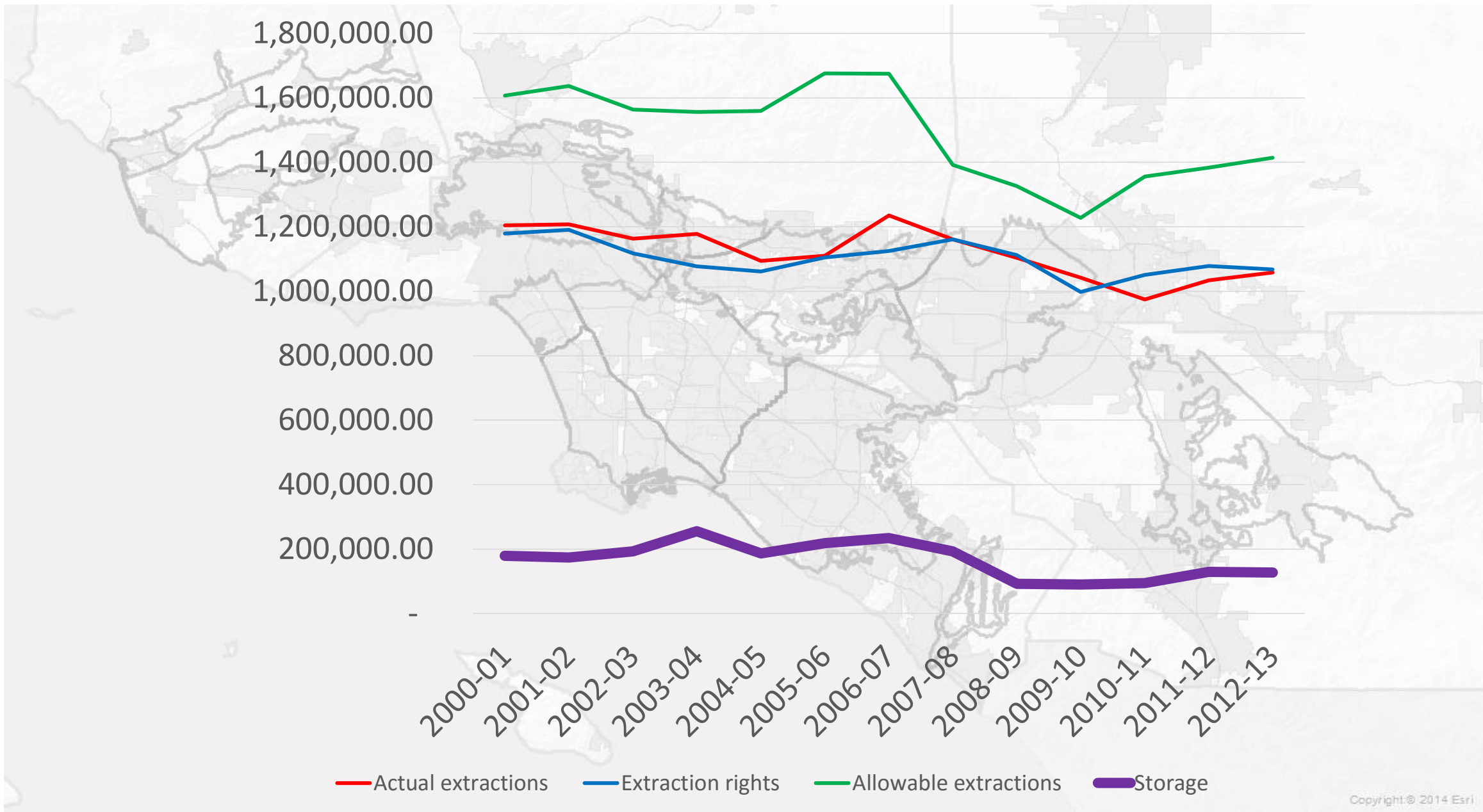
- Project Scope
 - Update groundwater agency profiles
 - Engage agencies in a process to determine:
 - Common issues and challenges
 - Whether common challenges can be addressed more effectively through regional coordination
 - Types of regional coordination possible
 - Next steps
 - Funded by the Haynes Foundation
 - 2 year project

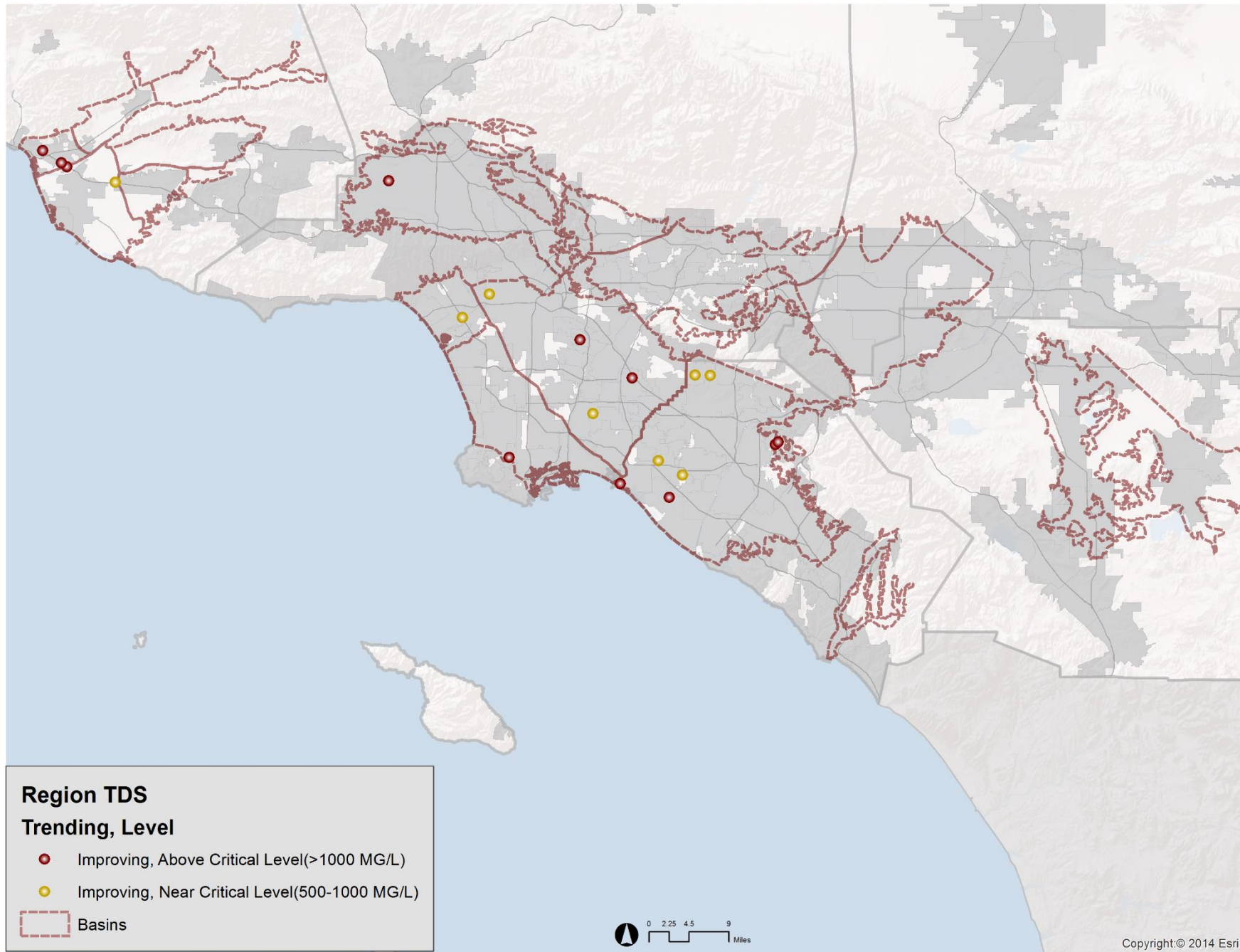


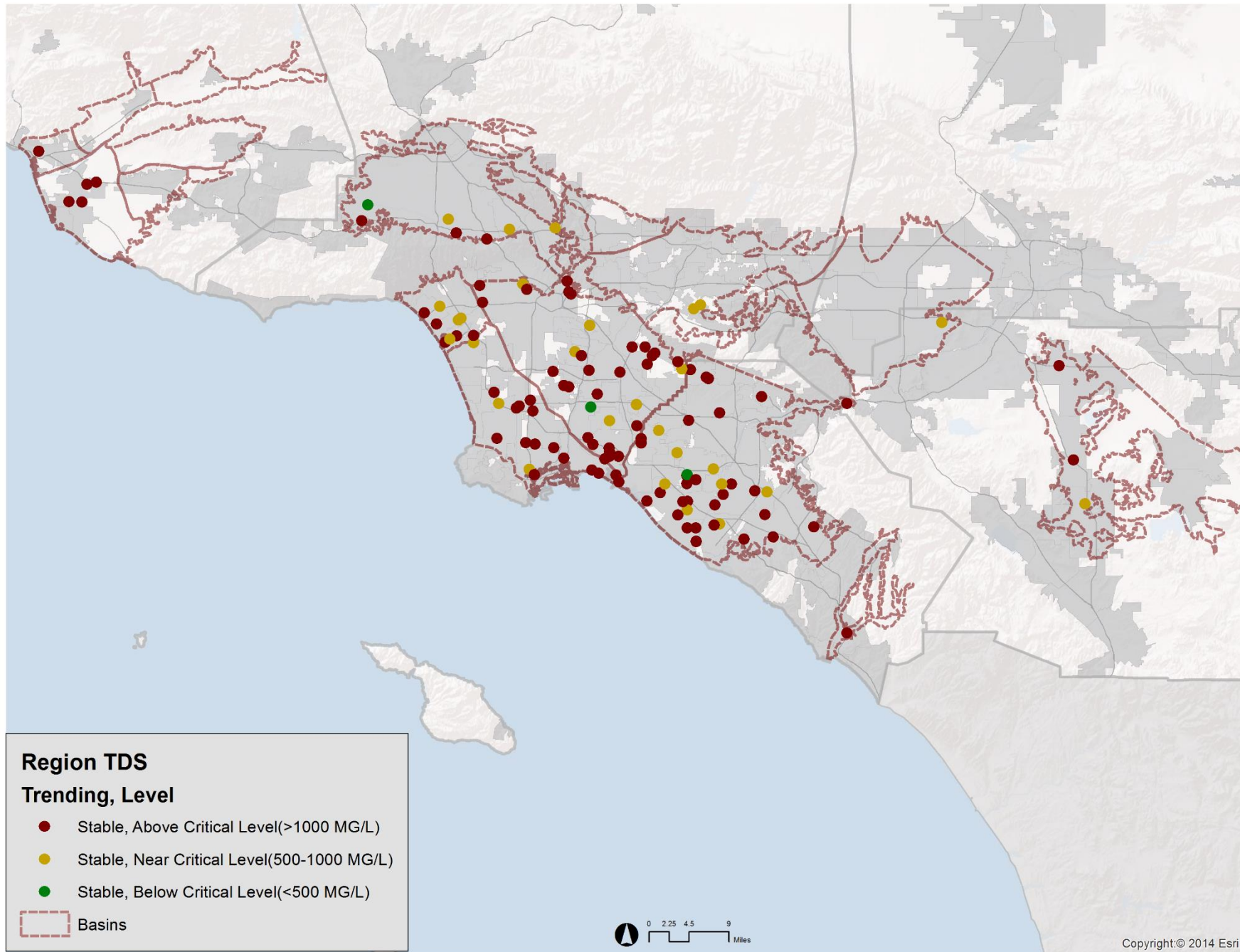


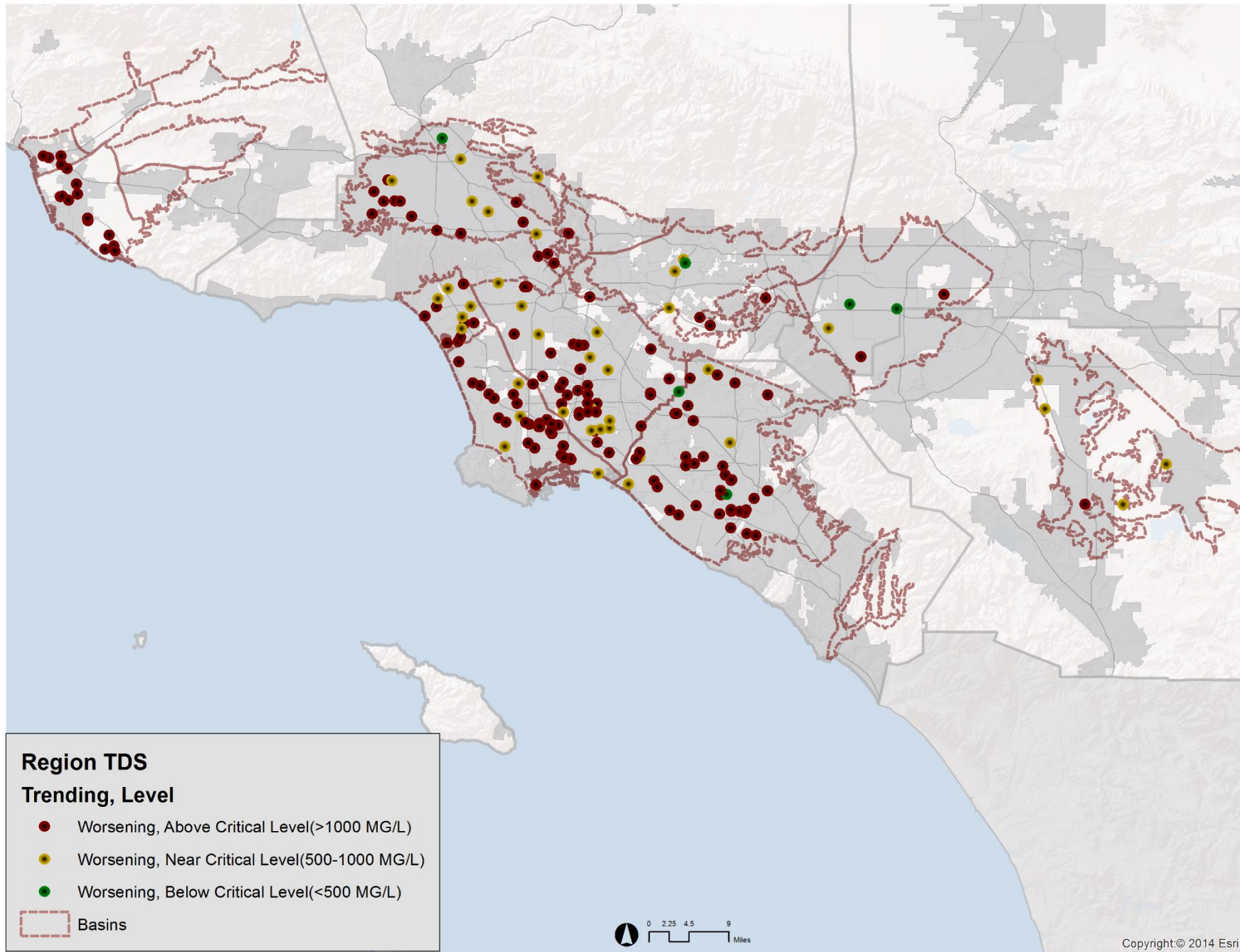


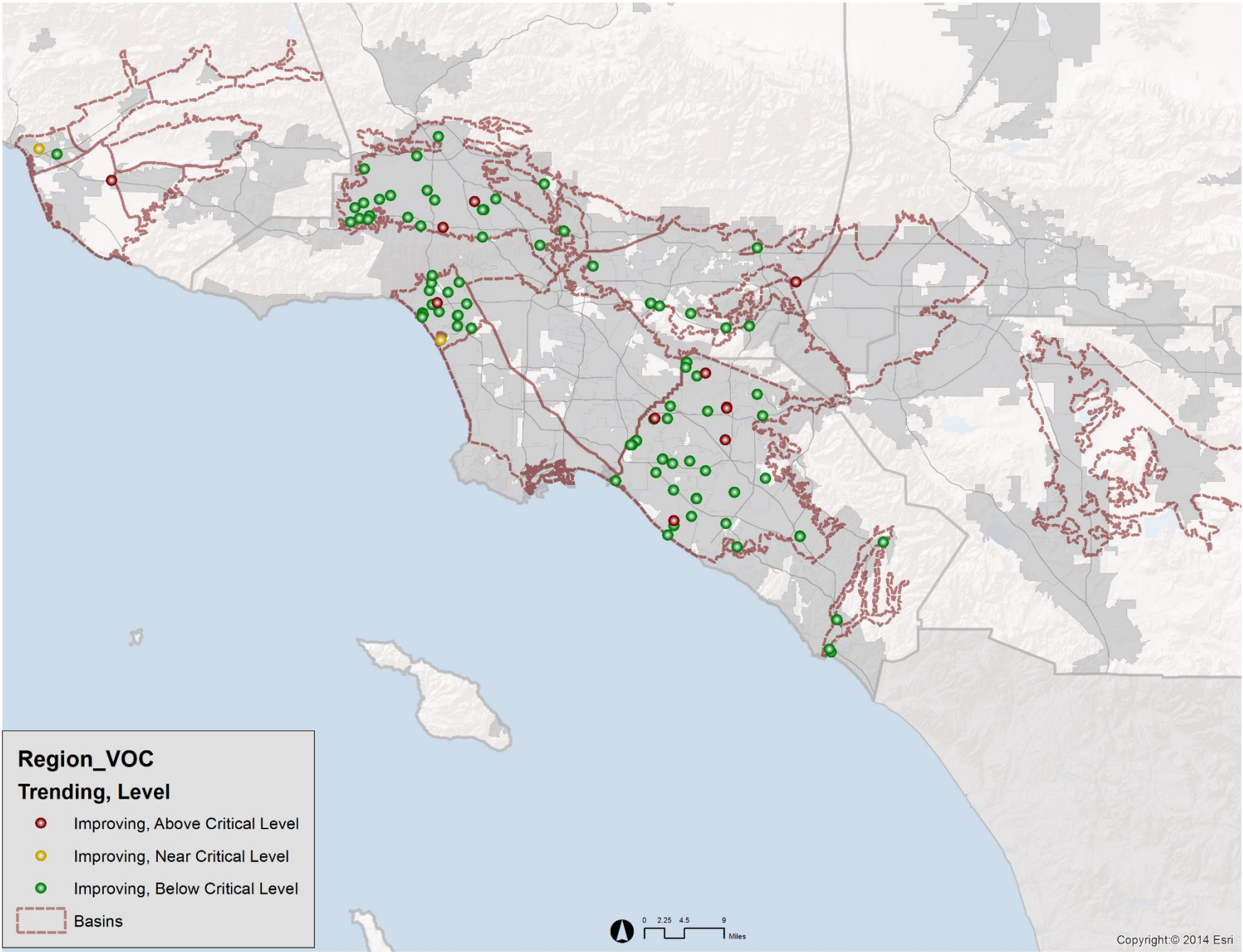


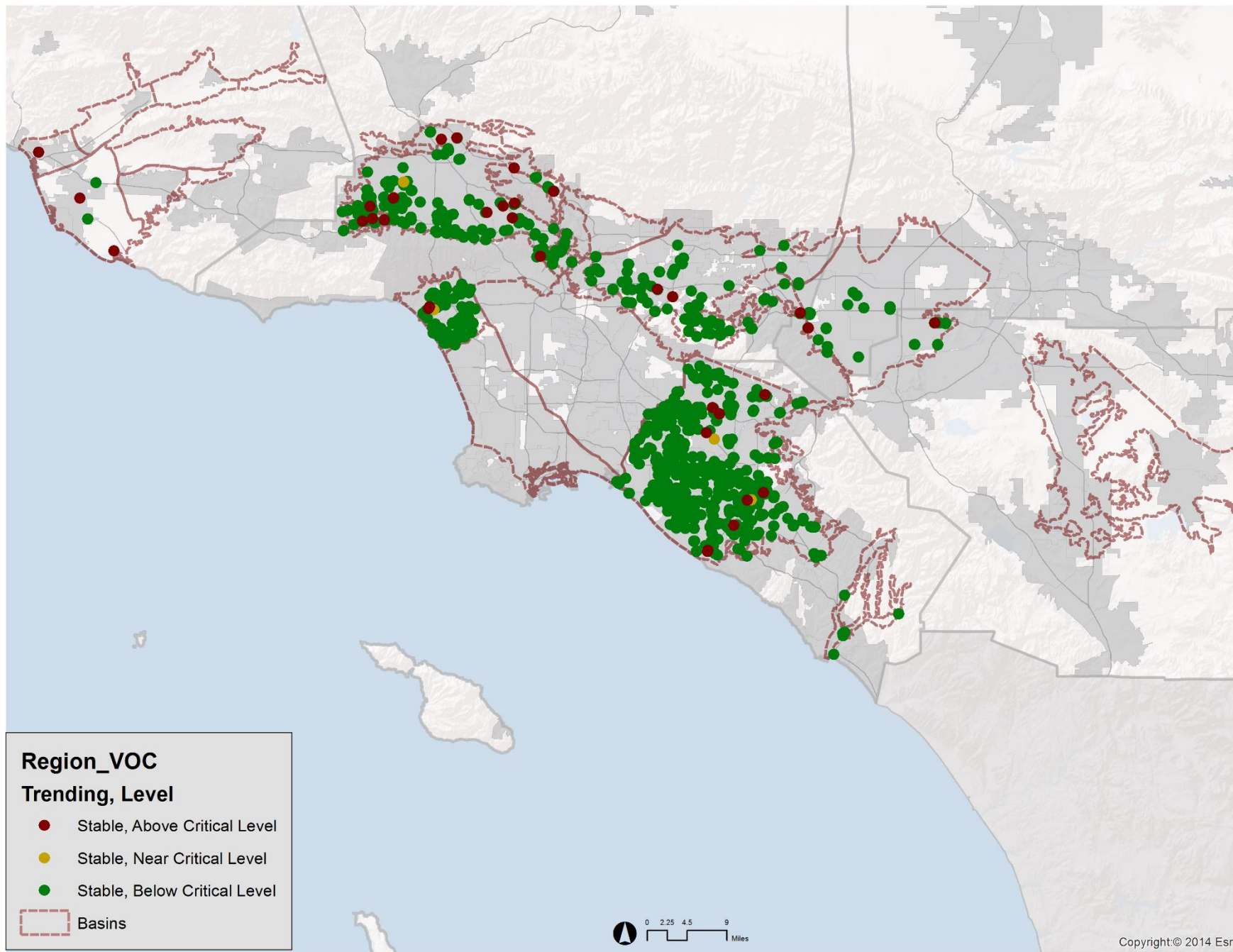


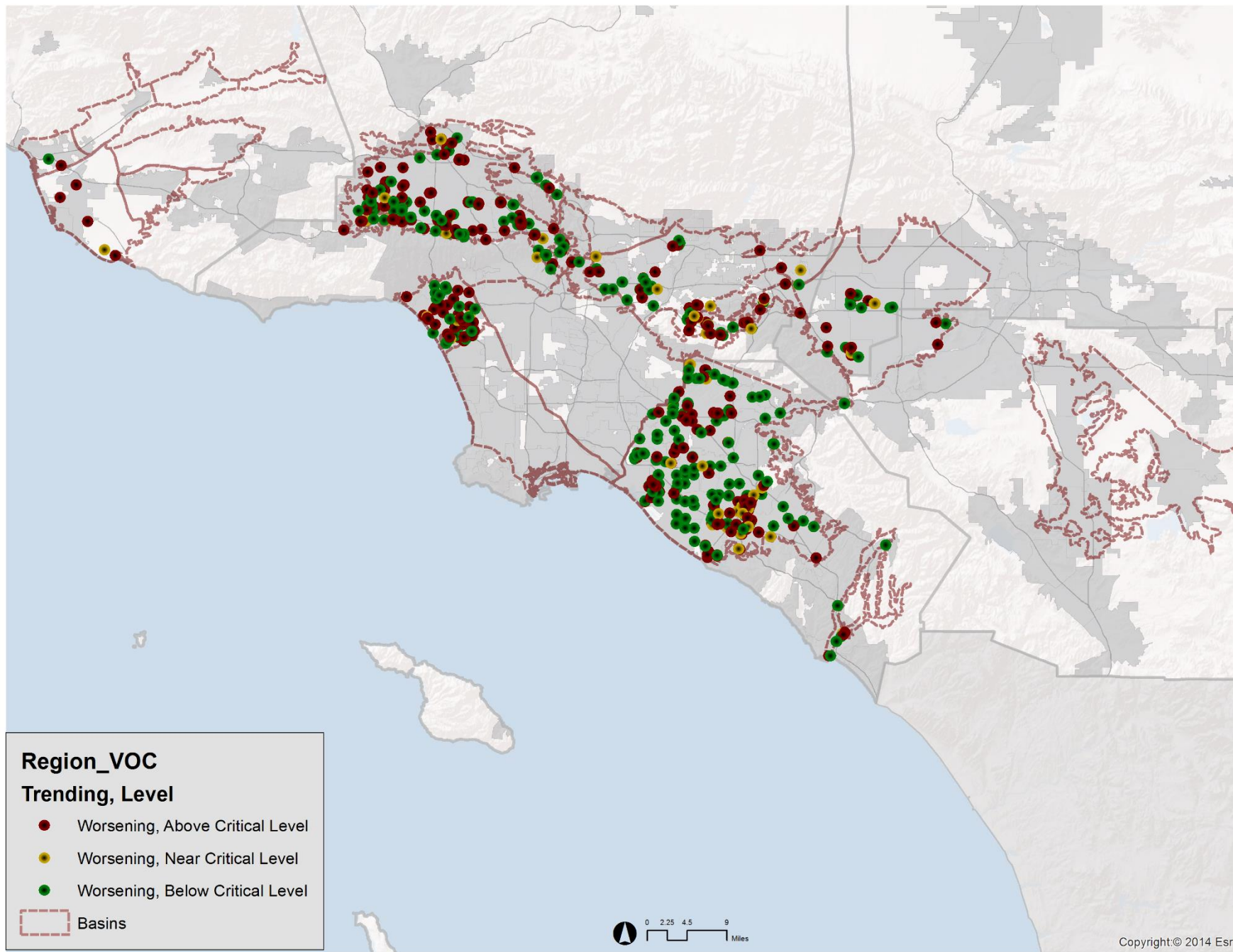












An evaluation of existing data on groundwater

- Parameters:
 - Access
 - Time frame
 - Source of data
 - Clarity
 - Consistency

Basin	Precipitation	Extractions	Replenishment	Groundwater elevations	Groundwater quality	Monitoring	Budget and finance
Central and West (last available 2013 – 2014)							
San Fernando (last available 2012 – 2013)							
Orange County (last available 2013 – 2014)							
Main San Gabriel (last available 2014 – 2015)							
Chino (last available 2012 – 2013)							
Fox Canyon (last available 2013 – 2014)							
San Juan (last available 2010)							
Raymond (last available 2014 – 2015)							
San Jacinto (last available 2013-2014)							