
Los Angeles Regional Water Quality Control Board

To: Los Angeles County MS4 Permittees

FROM: Renee Purdy *RAP*
Section Chief
Regional Programs

DATE: March 24, 2014

SUBJECT: LOS ANGELES COUNTY HUC-12 EQUIVALENT TECHNICAL MEMORANDUM

As discussed at the October 23, 2013 Technical Advisory Committee meeting of the LA County MS4 Permit, the County of Los Angeles has refined the USGS Watershed Boundary Dataset (WBD) hydrologic unit delineations within Los Angeles County based on local data and has developed HUC-12 equivalent boundaries that are more hydrologically accurate. The California Regional Water Quality Control Board, Los Angeles Region (Regional Board) has reviewed the County's proposed HUC-12 equivalent boundaries relative to the national HUC-12 boundaries. The Regional Board has also reviewed the two sets of boundaries in comparison with the watershed group boundaries that have been established by the MS4 Permittees in their notifications of intent to develop a WMP or EWMP.

Through this memorandum, the Regional Board hereby accepts the use of the HUC-12 equivalent boundaries for purposes of conducting reasonable assurance analysis (RAA) and monitoring pursuant to requirements of the LA County MS4 Permit with the following conditions. First, Permittees must use either the national HUC-12 boundaries or the County's HUC-12 equivalent boundaries for both their RAA and monitoring program. Second, Permittees must clearly state in their draft WMP/EWMP whether their RAA and monitoring program is based on the national HUC-12 boundaries or the County's HUC-12 equivalent boundaries. Third, where Permittees elect to use the HUC-12 equivalents, they must coordinate with the neighboring WMP/EWMP groups to ensure that there are no gaps in the geographic areas addressed in the RAA or monitoring programs.

Regarding the third condition, the Regional Board notes that there are discrepancies in the areal coverage between the original HUC-12 and the HUC-12 equivalent areas that could lead to gaps in geographic coverage if neighboring WMP/EWMP groups are not using the same boundaries (see Attachment 1). Therefore, Permittees in the following WMP/EWMP groups (see Attachment 2) must coordinate to ensure coverage of all areas in the RAA:

1. Groups 2, 11, 13, 14, 16, 17, 19 and individual WMPs
2. Groups 3, 4, 8, 9 and 18
3. Groups 5, 6, 7 and individual WMPs

The boundaries of Groups 1, 10, 12, and 15 do not appear to be impacted by the use of the HUC-12 equivalent boundaries; however, groups should confirm this. There are subwatershed boundary changes within each of the groups, which may need to be considered in the RAA and in the development of CIMPs.

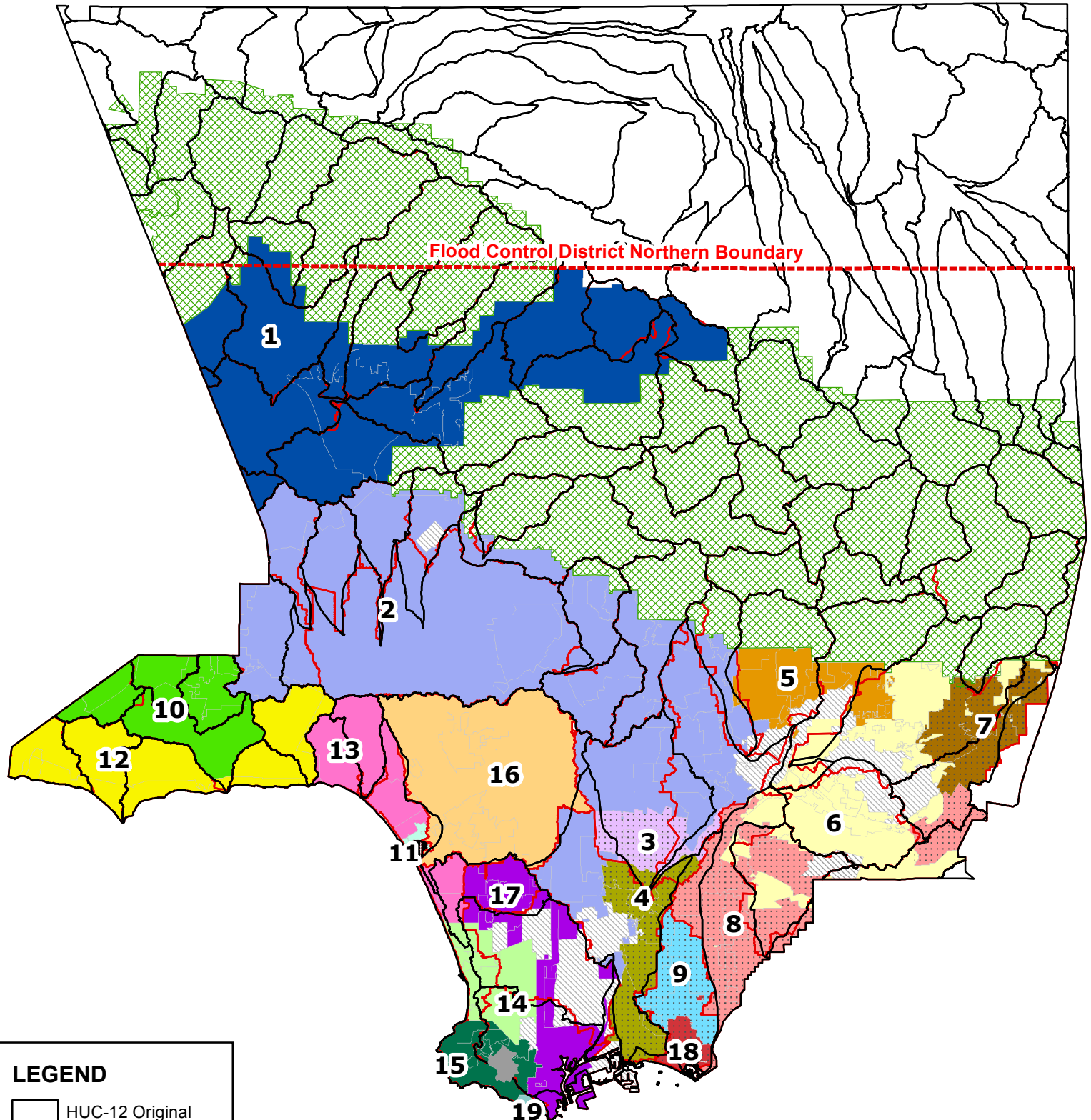
Should you have any questions, please do not hesitate to call me at (213) 576-6622 or Ivar Ridgeway at (213) 620-2150.

cc: Jun Zhu, RWQCB

Attachment 1 - EWMP/WMP Groups

Status as of 03/24/2014

0 3 6 Miles



LEGEND


- HUC-12 Original
- HUC-12 Equivalent
- Individual WMP
- Collaborative WMP
- No WMP

Attachment 2 - WMP/EWMP GROUPS and INDIVIDUAL CITIES

Status as of 03/24/2014

Bold = Lead/Coordinator

	Group Name	Cities/Permittees Involved	Selected Plan	SD
1	Upper Santa Clara River Watershed	Santa Clarita , County, LACFCD	EWMP	5
2	Upper Los Angeles River Watershed Group	Alhambra, Burbank, Calabasas, Glendale, Hidden Hills, La Canada Flintridge, Los Angeles , Montebello, Monterey Park, Pasadena, Rosemead, San Gabriel, San Marino, South Pasadena, Temple City, County, LACFCD	EWMP	1, 2, 3, 5
3	Los Angeles River Upper Reach 2 Sub Watershed	Bell, Bell Gardens, Commerce, Cudahy, Maywood, Huntington Park , Vernon, LACFCD	WMP	1
4	Lower Los Angeles River Watershed	Downey, Long Beach, Lynwood, Paramount, Pico Rivera, Signal Hill , South Gate, LACFCD	WMP (w/ option to switch to EWMP)	1, 2, 4
5	Rio Hondo/San Gabriel River Water Quality Group	Arcadia, Azusa, Bradbury, Duarte, Monrovia, Sierra Madre , County, LACFCD	EWMP	1, 5
6	Upper San Gabriel River	Baldwin Park, Covina, Glendora, Industry, La Puente, County , LACFCD	EWMP	1, 4, 5
7	East San Gabriel Valley Watershed Management Area	Claremont, La Verne , Pomona, San Dimas	WMP	1, 5
8	Lower San Gabriel River	Artesia, Bellflower, Cerritos, Diamond Bar, Downey, Hawaiian Gardens, La Mirada, Lakewood, Long Beach, Norwalk , Pico Rivera, Santa Fe Springs, Whittier, LACFCD	WMP (w/ option to switch to EWMP)	4
9	Los Cerritos Channel Watershed Group	Bellflower, Cerritos, Downey, Lakewood, Long Beach , Paramount, Signal Hill, LACFCD	WMP (w/ option to switch to EWMP)	4
10	Malibu Creek Watershed Group	Agoura Hills, Calabasas , Hidden Hills, Westlake Village, County, LACFCD	EWMP	3
11	Marina del Rey	Culver City, Los Angeles, County , LACFCD	EWMP	2, 3, 4
12	North Santa Monica Bay Coastal Watersheds	Malibu , County, LACFCD	EWMP	3
13	Santa Monica Bay Watershed Jurisdictions 2 & 3	El Segundo, Los Angeles , Santa Monica, County, LACFCD	EWMP	3, 4
14	Beach Cities Watershed Management Group	Hermosa Beach, Manhattan Beach, Redondo Beach , Torrance, LACFCD	EWMP	4
15	Peninsula EWMP Agencies	Palos Verdes Estates, Rancho Palos Verdes , Rolling Hills Estates, County, LACFCD	EWMP	4
16	Ballona Creek	Beverly Hills, Culver City, Inglewood, Los Angeles , Santa Monica, West Hollywood, County, LACFCD	EWMP	2, 3, 4
17	Dominguez Channel Watershed Management Area Group	El Segundo, Hawthorne, Inglewood, Los Angeles , County, LACFCD	EWMP	2, 4
18	Alamitos Bay/Los Cerritos Channel Group	County , LACFCD	WMP	4
19	Santa Monica Bay Watershed Jurisdiction 7	Los Angeles , LACFCD	WMP	4
	City	Watershed Management Area	Compliance Method	SD
a	Carson	Dominguez Channel WMA	Individual WMP	2
b	Compton	LA River (Compton Creek) & Dominguez Channel	Individual WMP	2
d	El Monte	LA River and San Gabriel River	Individual WMP	1
e	Gardena	Dominguez Channel WMA	Individual WMP	2
g	Irwindale	LA River and San Gabriel River	Individual WMP	1
h	La Habra Heights	San Gabriel River	Individual WMP	4
i	Lawndale	Dominguez Channel WMA	Individual WMP	2
j	Lomita	Dominguez Channel WMA (Machado Lake)	Individual WMP	4
k	Rolling Hills	Dominguez Channel WMA (Machado Lake, LA Harbors) & Santa Monica Bay Watershed Jurisdiction 7	No WMP	4
l	San Fernando	Los Angeles River	Individual WMP	3
m	South El Monte	LA River and San Gabriel River	Individual WMP	1
n	Walnut	San Gabriel River	Individual WMP	1
o	West Covina	San Gabriel River	Individual WMP	1

 National Forest Area