



**Regional Monitoring Programs:
A model for coordinated MS4 monitoring
in LA County**



Nancy L.C. Steele, D.Env., nancy@watershedhealth.org
Kristy Morris, PhD, kristy@watershedhealth.org
Ph: 213.229.9945





**Council for
Watershed Health**





The region's hub for watershed research and analysis

- Working at the intersection of research and policy
- Driving applied research to improve policy and practice
- Connecting diverse perspectives to address timely issues

A Vision for 2025:
Sustainable Greater Los Angeles

Managing at the watershed scale for economic vitality, social and environmental health

- Clean waters
- Reliable local water supplies
- Restored native habitats
- Ample parks & open spaces
- Integrated flood protection
- Revitalized rivers & communities



Today's Discussion

- Collaborative Monitoring
- Why has it been successful?
- Applicability for LA County MS4 Permit monitoring

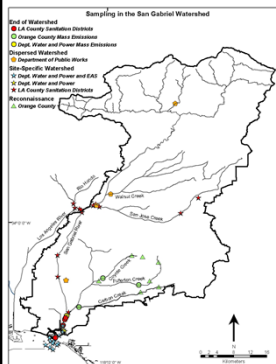


Today's Discussion

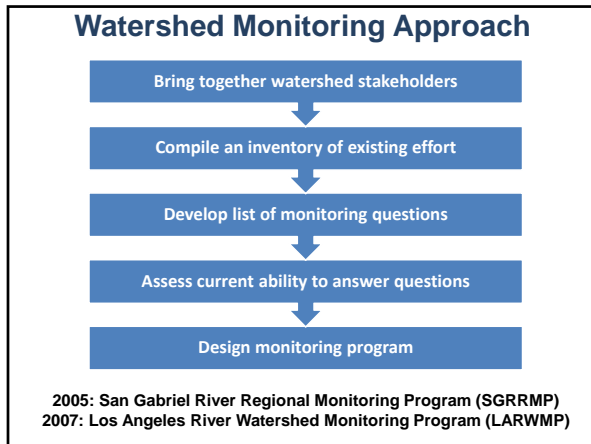
- Collaborative Monitoring
- Why has it been successful?
- Applicability for LA County MS4 Permit monitoring



San Gabriel Watershed Example: Pre 2005




- A lot of existing monitoring**
 - 6 agencies
 - 3 citizen groups
- Programs not coordinated**
 - Limited data comparability
 - Lack of coordination on constituents sampled
 - No coordinated QA, IM, etc.
- Inefficiencies**
 - Redundancies between monitoring programs
 - Majority of the watershed not monitored





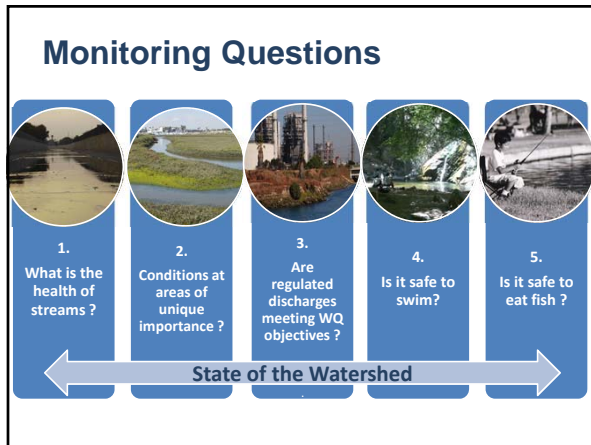
Today's Discussion

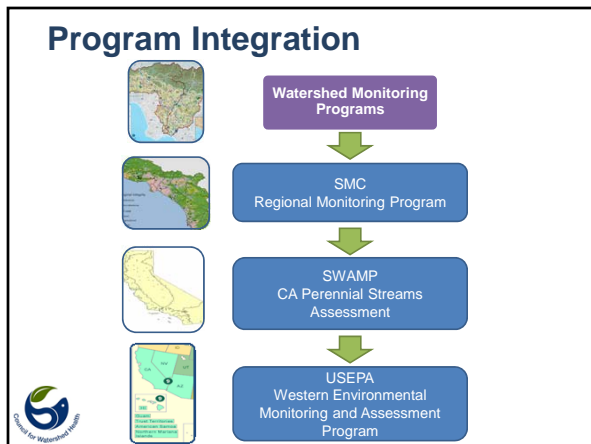
- Collaborative Monitoring
- **Why has it been successful?**
- Applicability for LA County MS4 Permit monitoring

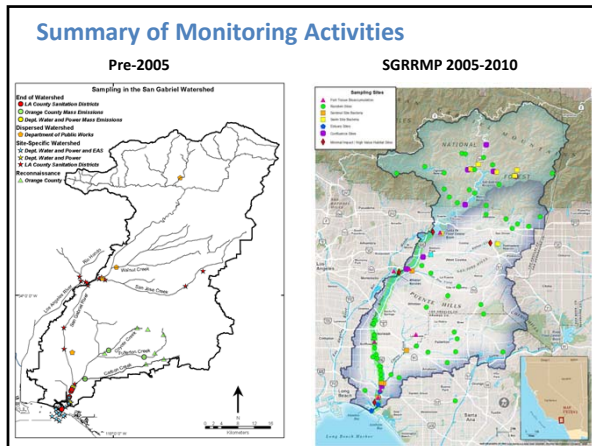


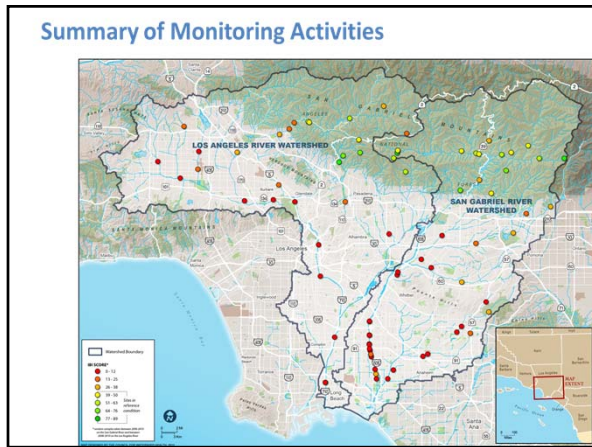
SGR Watershed Stakeholders

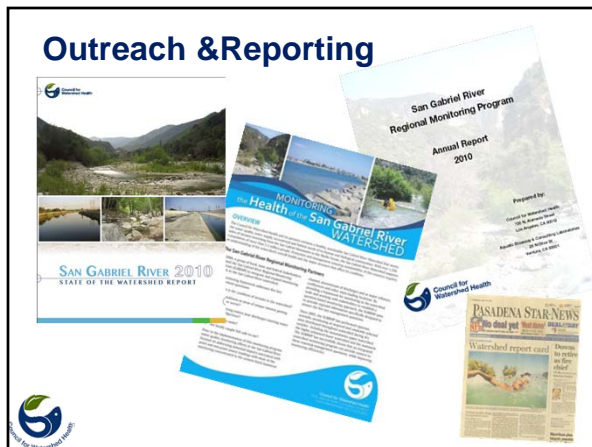
Stakeholder Groups	Program Design Phase	Current (Previous 12 months)
AES (generating station)	ACTIVE	
City of Downey	ACTIVE	ACTIVE
Council for Watershed Health	ACTIVE	ACTIVE
Friends of the San Gabriel River	-	-
Los Angeles County Sanitation Districts	ACTIVE	ACTIVE
Los Angeles County Department of Public Works- Flood Control District	ACTIVE	ACTIVE
Los Angeles Department of Water and Power	ACTIVE	-
Los Angeles Regional Water Quality Control Board	ACTIVE	ACTIVE
Orange County Stormwater Program	ACTIVE	ACTIVE
US Army Corps of Engineers	-	-
Rivers and Mountains Conservancy	ACTIVE	ACTIVE
San Gabriel Mountains Regional Conservancy	ACTIVE	ACTIVE
Santa Ana Regional Water Quality Control Board	ACTIVE	-
Southern California Coastal Water Research Project	ACTIVE	ACTIVE
US Forest Service		ACTIVE
US EPA	ACTIVE	ACTIVE





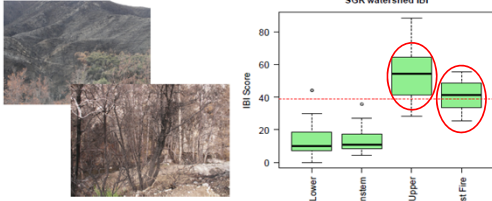






Adaptive and Responsive

2009 Station Fire: LA River Watershed
 2009 Morris Fire: San Gabriel River Watershed



Special Studies

- Responsive to emerging concerns, policy and method development
- Program and non-program funded

Examples

Regional Trash Assessments (OC Watersheds, SMC)
 Algae IBI development, cyanotoxin surveys (SCCWRP)
 Angler Surveys
 Bacteria Study



Today's Discussion

- Collaborative Monitoring vs Traditional Monitoring?
- Why has it been successful?
- **Applicability for LA County MS4 Permit monitoring**



LA County MS4 Permit Monitoring

Clear Objectives:

- Assess Impacts of MS4 discharges on receiving waters using chemical, physical and biological indicators
- Assess compliance with TMDL provisions
- Identify sources of pollutants
- Measure and improve the effectiveness of pollution control measures



LA County MS4 Permit Monitoring

Collaborative Monitoring Benefits:

- Efficient use of monitoring resources
- Satisfy multiple monitoring objectives
- Multiple approaches to meet objectives
- Coordination with approved TMDL Monitoring Plans
- Stakeholder & partner involvement



Role of CWH

- Effective collaboration and stakeholder participation
- Question-based program design
- Standardization across WMAs
- Shared data synthesis and interpretation
- Communication of results
- Strong and consistent program direction



Thank you

SANTINATION DISTRICTS OF LOS ANGELES COUNTY

CITY OF LOS ANGELES
SANITATION
DEPARTMENT OF
PUBLIC WORKS

Water Boards

Los Angeles
Department of
Water & Power

Forest Service
U.S.
DEPARTMENT OF AGRICULTURE

Council for Watershed Health

WESTON

Brock Bernstein Consultants

Questions

Nancy L.C. Steele, D.Env., nancy@watershedhealth.org
Kristy Morris, PhD, kristy@watershedhealth.org
Ph: 213.229.9945

Council for Watershed Health
