

Amendments
to the
Water Quality Control Plan – Los Angeles Region
for the
Ballona Creek Trash TMDL

Amendments:

Chapter 7. Total Maximum Daily Loads (TMDLs) Summaries Ballona Creek Trash TMDL*

Add a second paragraph documenting the dates when the amendment to the Ballona Creek Trash TMDL was adopted and approved.

"This TMDL was amended by:

The Regional Water Quality Control Board on March 4, 2004.

The State Water Resources Control Board on [Insert Date]

The Office of Administrative Law on [Insert Date]

The U.S. Environmental Protection Agency on [Insert Date]"

Table 7-3.1 Ballona Creek Trash TMDL Elements

Add to Table 7-3.1, Row 6, "Implementation":

"Compliance with the final waste load allocation may be achieved through a full capture system. A full capture system is any device or series of devices that traps all particles retained by a 5 mm mesh screen and has a design treatment capacity of not less than the peak flow rate (Q) resulting from a one-year, one-hour, storm in the subdrainage area. Rational equation is used to compute the peak flow rate: $Q = C \times I \times A$, where Q = design flow rate (cubic feet per second, cfs); C = runoff coefficient (dimensionless); I = design rainfall intensity (inches per hour, as determined per the rainfall isohyetal map in Figure A), and A = subdrainage area (acres). The isohyetal map may be updated annually by the Los Angeles County hydrologist to reflect additional rain data gathered during the previous year. Annual updates published by the Los Angeles County Department of Public Works are prospectively incorporated by reference into this TMDL and accompanying Basin Plan amendment."

Add Figure A, referenced in Table 7-3.1.

Table 7-3.2 Ballona Creek Trash TMDL: Implementation Schedule

Add footnote to Table 7-3.2:

"Notwithstanding the zero trash target and the default waste load allocations shown in Table 7-3.2, a Permittee will be deemed in compliance with the Trash TMDL in areas served by a Full Capture System within the Ballona Creek and Estuary Watershed."

Change existing footnote 1 to footnote 2 and modify language to clarify that the Regional Board will conduct the review and will reconsider the final Waste Load Allocations:

² The Regional Board will review and reconsider the final Waste Load Allocations once a reduction of 50% has been achieved and sustained.

Chapter 7. Total Maximum Daily Loads (TMDLs) Summaries Ballona Creek Trash TMDL*

This TMDL was adopted by:

The Regional Water Quality Control Board on September 19, 2001.

The State Water Resources Control Board on February 19, 2002.

The Office of Administrative Law on July 18, 2002.

The U.S. Environmental Protection Agency on August 1, 2002.

This TMDL was amended by:

The Regional Water Quality Control Board on March 4, 2004.

The State Water Resources Control Board on [Insert Date]

The Office of Administrative Law on [Insert Date]

The U.S. Environmental Protection Agency on [Insert Date]*

The following table presents the key elements of this TMDL.

Table 7-3.1 Ballona Creek: Trash TMDL Elements

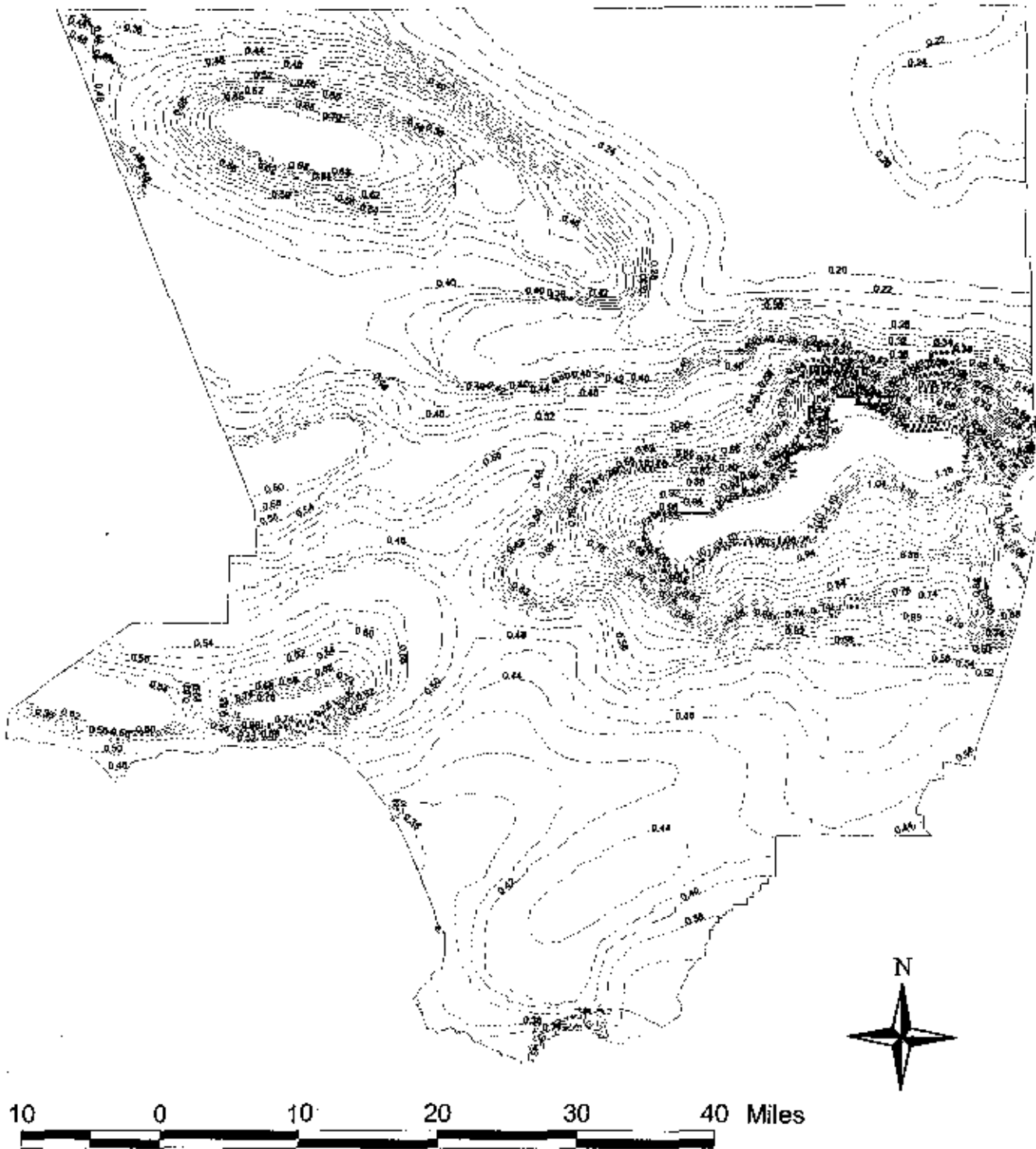
| Element | Derivation of Numbers |
|---|--|
| Problem Statement | Trash in Ballona Creek is causing impairment of beneficial uses. The following designated beneficial uses are impacted by trash: water contact recreation (REC1); non-contact water recreation (REC2); warm freshwater habitat (WARM); wildlife habitat (WILD); estuarine habitat (EST); marine habitat (MAR); rare and threatened or endangered species (RARE); migration of aquatic organisms (MIGR); spawning, reproduction and early development of fish (SPWN); commercial and sport fishing (COMM); shellfish harvesting (SHELL); wetland habitat (WET); and cold freshwater habitat (COLD). |
| Numeric Target <i>(interpretation of the narrative water quality objective, used to calculate the load allocations)</i> | Zero trash in the river. |
| Source Analysis | Stormwater discharge is the major source of trash in the river. |

| | |
|--|---|
| Loading Capacity | Zero. |
| Waste Load, Allocations | Phased reduction for a period of 10 years, from existing baseline load to zero. |
| Implementation | This TMDL will be implemented through stormwater permits and via the authority vested in the Executive Officer by section 13267 of the Porter-Cologne Water Quality Control Act; Water Code section 13000 et seq. Compliance with the final waste load allocation may be achieved through a full capture system. A full capture system is any device or series of devices that traps all particles retained by a 5 mm mesh screen and has a design treatment capacity of not less than the peak flow rate (Q) resulting from a one-year, one-hour, storm in the subdrainage area. Rational equation is used to compute the peak flow rate: $Q = C \times I \times A$, where Q = design flow rate (cubic feet per second, cfs); C = runoff coefficient (dimensionless); I = design rainfall intensity (inches per hour, as determined per the rainfall isohyetal map in Figure A), and A = subdrainage area (acres). The isohyetal map may be updated annually by the Los Angeles County hydrologist to reflect additional rain data gathered during the previous year. Annual updates published by the Los Angeles County Department of Public Works are prospectively incorporated by reference into this TMDL and accompanying Basin Plan amendment. |
| Margin of Safety | "Zero discharge" is a conservative standard which contains an implicit margin of safety. |
| Seasonal Variations and Critical Conditions | Discharge of trash from the storm drain occurs primarily during or shortly after a rain event of greater than 0.25 inches. |

*The complete administrative record for the TMDL is available for review upon request.

Figure A

1-Year 30-Min Rainfall Intensity (Inches/Hour)



1yr 30min intensity.shp
La county boundary.shp

Table 7-3.2 Ballona Creek Trash TMDL: Implementation Schedule.¹
 (Default waste load allocations expressed as cubic feet of uncompressed trash and % reduction.)

| Year | Baseline Monitoring/ Implementation | Waste Load Allocation | Compliance Point |
|----------------------------|---|--|--|
| 1 10/1/01-- 9/30/02 | Baseline Monitoring | No allocation specified. Trash will be reduced by levels collected during the baseline monitoring program. | Achieved through timely compliance with baseline monitoring program. |
| 2 10/1/02-- 9/30/03 | Baseline Monitoring | No allocation specified. Trash will be reduced by levels collected during the baseline monitoring program. | Achieved through timely compliance with baseline monitoring program. |
| 3 10/1/03-- 9/30/04 | Baseline Monitoring (optional)/ Implementation: Year 1 | 90% (9,985 for the Municipal permittees, 1,472 for Caltrans) | No compliance point (target of 90%) |
| 4 10/1/04-- 9/30/05 | Baseline Monitoring (optional)/ Implementation: Year 2 | 80% (8,875 for the Municipal permittees, 1,308 for Caltrans) | No compliance point (target of 80%) |
| 5 10/1/05-- 9/30/06 | Implementation: Year 3 | 70% (7,776 for the Municipal permittees; 1,146 for Caltrans) | Compliance is 80% of the baseline load calculated as a rolling 3-year annual average (8,875 for the Municipal permittees; 1,308 for Caltrans). |
| 6 10/1/06-- 9/30/07 | Implementation: Year 4 | 60% (6,656 for the Municipal permittees; 981 for Caltrans) | 70% of the baseline load the baseline load calculated as a rolling 3-year annual average (7,776 for the Municipal permittees; 1,146 for Caltrans). |
| 7 10/1/07-- 9/30/08 | Implementation: Year 5 ² | 50% (5,547 for the Municipal permittees; 818 for Caltrans) | 60% of the baseline load calculated as a rolling 3-year annual average (6,656 for the Municipal permittees; 981 for Caltrans) |
| 8 10/1/08-- 9/30/09 | Implementation: Year 6 | 40% (4,438 for the Municipal permittees; 654 for Caltrans) | 50% of the baseline load calculated as a rolling 3-year annual average (5,547 for the Municipal permittees; 818 for Caltrans). |
| 9 10/1/09-- 9/30/10 | Implementation: Year 7 | 30% (3,328 for the Municipal permittees; 491 for Caltrans) | 40% of the baseline load calculated as a rolling 3-year annual average (4,438 for the Municipal permittees; 654 for Caltrans). |
| 10 10/1/10-- 9/30/11 | Implementation: Year 8 | 20% (2,218 for the Municipal permittees; 327 for Caltrans). | 30% of the baseline load calculated as a rolling 3-year annual average (3,328 for the Municipal permittees; 491 for Caltrans). |
| 11 10/1/11-- 9/30/12 | Implementation: Year 9 | 10% (1,110 for the Municipal permittees; 164 for Caltrans). | 20% of the baseline load calculated as a rolling 3-year annual average (2,220 for the Municipal permittees; 327 for Caltrans). |
| 12 10/1/12-- 9/30/13 | Implementation: Year 10 | 0 or 0 % of the baseline load. | 10% of the baseline load calculated as a rolling 3-year annual average (1,110 for the Municipal permittees; 164 for Caltrans). |
| 13 10/1/13-- 9/30/14 | Implementation: Year 11 | 0 or 0 % of the baseline load. | 3.3 % of the baseline load calculated as a rolling 3-year annual average (366 for the Municipal permittees, 54 for Caltrans). |
| 14 10/1/14-- 9/30/15 | Implementation: Year 12 | 0 or 0 % of the baseline. | 0 or 0 % of the baseline load. |

¹ "Notwithstanding the zero trash target and the default waste load allocations shown in Table 7-3.2, a Permittee will be deemed in compliance with the Trash TMDL in areas served by a Full Capture System within the Ballona Creek and Estuary Watershed."

² The Regional Board will review and reconsider the final Waste Load Allocations once a reduction of 50% has been achieved and sustained.

Table 7-3.3. Ballona Creek Trash TMDL: Significant Dates.

| | |
|---|--|
| 30 days after receipt of the Executive Officer's request as authorized by Section 13267 of the Water Code annual average. | Submit baseline monitoring plan(s). |
| 120 days after receipt of the Executive Officer's request as authorized by Section 13267 of the Water Code. | List of facilities that are outside of the permittee's jurisdiction but drain to a portion of the permittee's storm drain system, which discharges to Ballona Creek. |
| Within the first 2 years after approval of this basin plan amendment; to be extended to 4 years at the option of the permittees | Collection of baseline data. |
| 72 hours after each rain event | Clean out of and measurement of trash retained. |
| Every 3 months during dry weather | Clean out of and measurement of trash retained. |