

ATTACHMENT A
Part 1

Notices of Intent



City of
SANTA CLARITA

23920 Valencia Boulevard • Suite 300 • Santa Clarita, California 91355-2196
Phone: (661) 259-2489 • FAX: (661) 259-8125
www.santa-clarita.com

June 28, 2013

Mr. Samuel Unger, P.E., Executive Officer
California Regional Water Quality Control Board - Los Angeles Region
320 West 4th Street, Suite 200
Los Angeles, CA 90013

Dear Mr. Unger:

Subject: Letter of Intent City of Santa Clarita Upper Santa Clara River Watershed Enhanced Watershed Management Plan and Coordinated Integrated Monitoring Plan

The City of Santa Clarita (City) submits this Letter of Intent to participate in and share the cost of the development of an Enhanced Watershed Management Program (EWMP) and a Coordinated Integrated Monitoring Program (CIMP) with the Upper Santa Clara River Watershed stakeholders. This Letter of Intent serves to satisfy the EWMP notification requirements of Section VI.C.4.b.iii(3) of Order No R4-2012-0175 (Municipal Separate Storm Sewer System Permit) and the CIMP requirements of Section IV.C.1 of Attachment E of the Municipal Separate Storm Sewer System Permit.

The Upper Santa Clara River Watershed Group consists of the following agencies: City of Santa Clarita as coordinating agency for the EWMP and CIMP development, County of Los Angeles, and Los Angeles County Flood Control District. The Upper Santa Clara River Watershed Group has included a final draft Memorandum of Understanding as Attachment A of the Notice of Intent. The County and the City intend to submit a final Memorandum of Understanding to its Board of Supervisors and City Council for approval prior to December 28, 2013.

If you have any questions or need additional information, please contact me at (661) 255-4337.

Sincerely,

Kenneth W. Striplin
City Manager

KS:HM:eg
SAENVSRVCS\NPDES\2012 Permit\NOI\Santa Clarita Notice of Intent Ltr.doc

Enclosures

cc: Robert Newman, Director of Public Works
Travis Lange, Environmental Services Manager
Joe Montes, City Attorney





COUNTY OF LOS ANGELES

DEPARTMENT OF PUBLIC WORKS

"To Enrich Lives Through Effective and Caring Service"

900 SOUTH FREMONT AVENUE
ALHAMBRA, CALIFORNIA 91803-1331
Telephone: (626) 458-5100
<http://dpw.lacounty.gov>

GAIL FARBER, Director

June 24, 2013

ADDRESS ALL CORRESPONDENCE TO:
P.O. BOX 1460
ALHAMBRA, CALIFORNIA 91802-1460

IN REPLY PLEASE
REFER TO FILE: **WM-7**

Mr. Samuel Unger, P.E., Executive Officer
California Regional Water Quality
Control Board – Los Angeles Region
320 West 4th Street, Suite 200
Los Angeles, CA 90013

Attention Ms. Renee Purdy

Dear Mr. Unger:

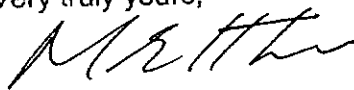
**LETTER OF INTENT – COUNTY OF LOS ANGELES
UPPER SANTA CLARA RIVER WATERSHED
ENHANCED WATERSHED MANAGEMENT PROGRAM
AND COORDINATED INTEGRATED MONITORING PROGRAM**

The County of Los Angeles (County) submits this Letter of Intent to participate in and share the cost of the development of an Enhanced Watershed Management Program (EWMP) and a Coordinated Integrated Monitoring Program (CIMP) with the Upper Santa Clara River Watershed Group. This Letter of Intent serves to satisfy the EWMP notification requirements of Section VI.C.4.b.iii(3) of Order No. R4-2012-0175 (Municipal Separate Storm Sewer System Permit) and the CIMP requirements of Section IV.C.1 of Attachment E of the Municipal Separate Storm Sewer System Permit.

The Upper Santa Clara River Watershed Group consists of the following agencies: City of Santa Clarita as the coordinating agency for EWMP and CIMP development, County, and Los Angeles County Flood Control District. The Upper Santa Clara River Watershed Group has included a final draft Memorandum of Understanding as Attachment A of the Notice of Intent. The County intends to submit a final Memorandum of Understanding to its Board of Supervisors for approval prior to December 28, 2013.

If you have any questions, please contact Ms. Angela George at (626) 458-4325 or ageorge@dpw.lacounty.gov.

Very truly yours,


for GAIL FARBER
Director of Public Works

GC:jht
P:\wmpub\Secretaria\2013 Documents\Letter\LOI SCR County.doc\13228

cc: City of Santa Clarita



COUNTY OF LOS ANGELES

DEPARTMENT OF PUBLIC WORKS

"To Enrich Lives Through Effective and Caring Service"

GAIL FARBER, Director

900 SOUTH FREMONT AVENUE
ALHAMBRA CALIFORNIA 91803-1331
Telephone: (626) 458-5100
<http://dpw.lacounty.gov>

ADDRESS ALL CORRESPONDENCE TO:
P.O. BOX 1460
ALHAMBRA, CALIFORNIA 91802-1460

June 24, 2013

IN REPLY PLEASE
REFER TO FILE: **WM-7**

Mr. Samuel Unger, P.E., Executive Officer
California Regional Water Quality
Control Board – Los Angeles Region
320 West 4th Street, Suite 200
Los Angeles, CA 90013

Attention Ms. Renee Purdy

Dear Mr. Unger:

**LETTER OF INTENT – LOS ANGELES COUNTY FLOOD CONTROL DISTRICT
UPPER SANTA CLARA RIVER WATERSHED
ENHANCED WATERSHED MANAGEMENT PROGRAM
AND COORDINATED INTEGRATED MONITORING PROGRAM**

The Los Angeles County Flood Control District (LACFCD) submits this Letter of Intent to participate in and share the cost of the development of an Enhanced Watershed Management Program (EWMP) and a Coordinated Integrated Monitoring Program (CIMP) with the Upper Santa Clara River Watershed Group. This Letter of Intent serves to satisfy the EWMP notification requirements of Section VI.C.4.b.iii(3) of Order No. R4-2012-0175 (Municipal Separate Storm Sewer System Permit) and the CIMP requirements of Section IV.C.1 of Attachment E of the Municipal Separate Storm Sewer System Permit.

The Upper Santa Clara River Watershed Group consists of the following agencies: City of Santa Clarita as the coordinating agency for EWMP and CIMP development, County of Los Angeles, and LACFCD. The Upper Santa Clara River Watershed Group has included a final draft Memorandum of Understanding as Attachment A of the Notice of Intent. The LACFCD intends to submit a final Memorandum of Understanding to the County of Los Angeles Board of Supervisors (which is the LACFCD's governing body) for approval prior to December 28, 2013.

If you have any questions, please contact Ms. Terri Grant at (626) 458-4309 or tgrant@dpw.lacounty.gov.

Very truly yours,

GAIL FARBER
Chief Engineer of the Los Angeles County Flood Control District

GC:jht

P:\wmp\pub\Secretariat\2013 Documents\Letter\O: SCR LACFCD.doc\13229

cc: City of Santa Clarita

Notice of Intent

Enhanced Watershed Management Program (EWMP) and Coordinated Integrated Monitoring Program

SECTION 1. PROGRAM TYPE AND PERMITTEES

The Permittees (listed in **Table 1**) that are party to this Notice of Intent (NOI) hereby notify the Los Angeles Regional Water Quality Control Board (Regional Water Board) of their intent to develop an Enhanced Watershed Management Plan (EWMP) for the Upper Santa Clara River Watershed. This NOI is being submitted in accordance with Part VI.C.4.b.i of Order R4-2012-0175. Permittees meet the LID and Green Street conditions and will submit a Work Plan within 18 months of the effective date of the Order R4-2012-0175 (June 28, 2014) and will submit the Draft EWMP within 30 months of the effective date of Order R4-2012-0175 (June 28, 2015).

The Permittees (listed in **Table 1**) that are party to this NOI hereby notify the Regional Water Board of their intent to develop a Coordinated Integrated Monitoring Program (CIMP). The Permittees intend to follow a CIMP approach for each of the required monitoring plan elements and will submit the CIMP within 18 months of the effective date of Order R4-2012-0175 (June 28, 2014).

Table 1. Enhanced Watershed Management Program Permittees

City of Santa Clarita
Los Angeles County
Los Angeles County Flood Control District

SECTION 2. TOTAL MAXIMUM DAILY LOADS ESTABLISHED WATER QUALITY BASED EFFLUENT LIMITATIONS:

Table 2 lists applicable interim and final trash Water Quality Based Effluent Limitations (WQBELs) and all other final WQBELs and receiving water limitations established by Total Maximum Daily Loads (TMDLs) and identified by Section VI.C.4.B.ii of the Order. However, per the Nutrients TMDL and the Chloride TMDL for the Santa Clara River, the primary source of these pollutants is not the storm drain system.

Table 2. Applicable Interim and Final Trash WQBELs and all other Final WQBELs and Receiving Water Limitations¹ Occurring Before Enhanced Watershed Management Program Approval

TMDL Order	WQBEL	Interim/Final	Compliance Date
Santa Clara River Nutrients TMDL	Reach 5 Total Ammonia as Nitrogen 1-hr average 5.2 mg/L 30 day average 1.75 mg/L Nitrate as Nitrogen plus Nitrite as Nitrogen 30 day average 6.8 mg/L	Final	April 6, 2010
Santa Clara River Chloride TMDL	Reach 5 and 6 100 mg/L	Final	March 23, 2004
Lake Elizabeth, Munz Lake, Lake Hughes Trash TMDL R4-2007-009	20% drainage area covered by Full Capture System	Interim	March 6, 2012
	40% drainage area covered by Full Capture System	Interim	March 6, 2013
	60% drainage area covered by Full Capture System	Interim	March 6, 2014
	80% drainage area covered by Full Capture System	Interim	March 6, 2015
	100% drainage area covered by Full Capture System	Final	March 6, 2016
¹ Per Order R4-2012-0175, interim and final WQBELs are listed for trash TMDL and final WQBELs are listed for other pollutants.			

SECTION 3. IDENTIFY TMDL CONTROL MEASURES:

The Permittees to this EWMP are responsible for one TMDL that has interim (trash only) and final WQBELs that occur prior to the anticipated approval of the Program. **Table 3** identifies the control measures being implemented by each Permittee for the TMDL. The Permittees will continue to implement these measures during the development of the EWMP.

Table 3. Control Measures that will be Implemented Concurrently with EWMP Development for TMDLs

TMDL	Permittees	Implementation Plan and Control Measures	Status of Implementation
Lake Elizabeth, Trash TMDL R4-2007-009	County of Los Angeles	Five Full Capture Devices Required to achieve the final WLAs	Completed as of September 2012

SECTION 4. DEMONSTRATION OF MEETING LID ORDINANCE AND GREEN STREET POLICY REQUIREMENTS:

The Permittees that are party to this NOI have LID ordinances and Green Streets policies in place or in development. **Table 4** summarizes the status of the Permittees' LID ordinances and **Table 5** summarizes the status of the Permittees' Green Streets policies. More than 50% of the MS4 watershed area that will be addressed by the EWMP is covered by LID ordinances and Green Streets policies. County of Los Angeles and City of Santa Clarita Draft Green Streets Policy and Draft LID Ordinance are available on request.

Table 4. Status of LID Ordinance Coverage of the MS4 Watershed Area Addressed by the EWMP

Permittee	LID Ordinance (Indicate Status)	MS4 Watershed Area for which Permittee is Responsible [acres]	MS4 Watershed Area Covered by Permittee's LID Ordinance [acres]	Percentage of Watershed Area
City of Santa Clarita	In Development	39,450.9		
County of Los Angeles	Draft Ordinance	81,972.1	81,972.1	67.5
LACFCD	N/A	N/A	N/A	N/A
Total MS4 Watershed Area		121,423		
Total MS4 Watershed Area Covered by LID Ordinances			121,423	
% of MS4 Watershed Area Covered by LID Ordinance)				67.5%
Status Descriptions:				
<ul style="list-style-type: none"> • Draft Ordinance – Permittee has completed, or will complete by June 28, 2013, the development of a draft LID Ordinance that is in compliance with the requirements of Order R4-2012-0175 for its portion of the MS4 watershed. • In Development – Permittee initiated development of an LID Ordinance that is in compliance with the requirements of Order R4-2012-0175 for its portion of the MS4 in the watershed within 60 days of the effective date of Order R4-2012-0175 and will have a draft ordinance. 				

Table 5. Status of Green Street Policy Coverage of the MS4 Watershed Area Addressed by the EWMP

Permittee	Green Street Policy (Indicate Status)	MS4 Watershed Area for which Permittee is Responsible [acres]	MS4 Watershed Area Covered by Permittee's LID Ordinance [acres]	Percentage of Watershed Area
City of Santa Clarita	In Place	39,450.9	39,450.9	32.5
County of Los Angeles	Draft Policy	81,972.1	81,972.1	67.5
LACFCD	N/A	N/A	N/A	N/A
Total MS4 Watershed Area		121,423		
Total MS4 Watershed Area Covered by Green Street Policies			121,423	
% of MS4 Watershed Area Covered by Green Street Policies				100
Status Descriptions:				
<ul style="list-style-type: none"> • In Place – Permittee has adopted a Green Street Policy that is in compliance with the requirements of Order R4-2012-0175 for its portion of the MS4 in the watershed. • Draft Policy – Permittee has completed, or will complete by June 28, 2013, the development of a draft Green Street Policy that is in compliance with the requirements of Order R4-2012-0175 for its portion of the MS4 watershed. • In Development – Permittee initiated development of a Green Street Policy that is in compliance with the requirements of Order R4-2012-0175 for its portion of the MS4 in the watershed within 60 days of the effective date of Order R4-2012-0175 and will have a draft policy. 				

SECTION 5. GEOGRAPHIC SCOPE OF ENHANCED WATERSHED MANAGEMENT PROGRAM:

The geographic scope covered by this EWMP is the portion of the upper Santa Clara River in Los Angeles County and the City of Santa Clarita that is regulated by the Los Angeles County MS4 NPDES Permit. The scope excludes state and federal lands, including the Angeles National Forest and the state parks lands. The Angeles National Forest and the state parks lands are outside Los Angeles County MS4 NPDES Permit regulation and therefore not subject to the conditions of this permit. The upper Santa Clara River watershed covered by the EWMP encompasses approximately 121,423 acres. The entire Santa Clara River Watershed is 1,634 square miles, which includes the land area within Ventura County as well as national forest and state park land that is not included in this EWMP. **Table 6** provides a breakdown of the land area within the EWMP by Permittee and the land area of the upper Santa Clara River outside of NPDES Permit conditions that are not included in the EWMP. **Figure 1** provides a map of the watershed boundaries and notes the jurisdictional boundaries of the Permittees and other pertinent entities in the upper Santa Clara River. Of the total watershed area, the City of Santa Clarita and County of Los Angeles have jurisdiction over 46% of the land area. The City of Santa Clarita and County of Los Angeles do not have jurisdiction over lands owned by the State of California or the federal government including the Angeles National Forest and state owned open space lands.

Table 6. Approximate Land Area within EWMP and Other Watershed Areas

Permittee	EWMP Agency	Approximate Land Area (Acres or Square Miles)
Watershed Lands Within EWMP Area For Which the Permittees are Responsible		
County of Los Angeles	Yes	81,972.1
City of Santa Clarita	Yes	39,450.9
Los Angeles County Flood Control District	Yes	N/A
Approximate Area of EWMP Agencies		121,423
Watershed Lands Outside of EWMP and NPDES Permit Conditions		
State Parks Land (upper Santa Clara only)	No	344
Angeles National Forest	No	140,981
Approximate Total Upper Santa Clara River Watershed		262,748

SECTION 6. PLAN CONCEPT AND INTERIM MILESTONES AND DEADLINES:

Unlike other watersheds, MS4 TMDL implementation plans have not been developed for the upper Santa Clara River watershed. However, the County of Los Angeles and City of Santa Clarita have a long history of collaboration to solve problems. The EWMP area is part of an integrated regional water management plan. Through the Upper Santa Clara River Integrated Regional Water Management Plan the County of Los Angeles and the City of Santa Clarita work collaboratively with local water retailers and suppliers, the Santa Clarita Valley Sanitation District, and local stakeholders to prioritize projects that improve water management in the region. This tradition continues through an agreement to work together on the EWMP. The City of Santa Clarita and the County of Los Angeles were in discussions to work together on the bacteria TMDL as the new NPDES Permit was adopted. Those efforts have been modified to incorporate the EWMP requirements. The City of Santa Clarita will act as coordinating agency for the effort working collaboratively with County of Los Angeles and the many other stakeholders in the area to develop and analyze EWMP efforts and projects. Volunteer efforts, such as the annual River Rally clean up, will also be incorporated to gain community support for the EWMP.

Protecting the environment has always been a priority for the area. The upper Santa Clara River watershed provides a unique interface between a natural river and developed areas. The City has endeavored to protect and restore the Santa Clara River through land acquisitions and invasive

species removal projects. The City has preserved 7,955 acres of open space and County of Los Angeles has over 2,200 acres. This is in addition to the nearly 140,000 acres of national forest land. Over 117 species of threatened, endangered or sensitive plant and wildlife species have been recorded in the Santa Clara River watershed. The EWMP will help continue and build on existing efforts to conserve and restore the Santa Clara River.

The primary approach to the EWMP will include the most community friendly and cost effective methods of reducing urban runoff pollution. The economic impacts will be an important part of the analysis of any project. In order to control costs and provide the most cost effective approach, the EWMP Group will consider the following methods to reduce pollutants. These efforts can be applied to any pollutant.

- Active source control
- Business training and outreach
- Outreach to residents
- Incentive programs
- Closer collaboration on outdoor water use and landscape management with water suppliers
- Adaptive management to prioritize potential enforcement actions
- Continued active pursuit of open space

The EWMP will also evaluate multi-benefit regional projects that will retain, through infiltration or capture and reuse, the storm water volume from the 85th percentile, 24-hour storm for the drainage areas tributary to projects. The Santa Clarita Valley currently has excellent infiltration of storm water and dry weather flows in many areas, including the riverbed itself.

Consistent with the Open Space and Conservation Element of the City General Plan and County General Plan for the Santa Clarita Valley, the EWMP concept will focus on government, business, and citizens working together to create a vision of sustainable development that includes both human and environmental wellness and economic viability, or sustainability.

Using these considerations, multi-benefit regional projects will be evaluated for feasibility alongside other watershed control measures to work toward MS4 discharge compliance with all interim and final WQBELs. The evaluation will include source identification and analysis to determine the best course of action considering human and environmental wellness, stakeholder input, Technical Advisory Committee feedback, economic considerations and practicability and feasibility of proposed projects. The resulting prioritized projects will form the basis of the proposed EWMP.

To develop the EWMP and CIMP, the City and County will develop a Work Plan outlining the proposed approach to development of the EWMP. To ensure adequate progress is being made to achieve the permit deadlines, interim milestone and deadlines for Work Plan, CIMP, and EWMP Plan development were identified and are summarized in Table 7.

Table 7. Enhanced Watershed Management Program Interim Milestones and Deadlines

Table 7. Enhanced Watershed Management Program Interim Milestones and Deadlines	Deadline
Sign MOU and award contract	July 2013 *
Compile technical memorandum of water quality priorities	December 2013 *
Complete internal draft of EWMP Work Plan	February 2014 *
Complete draft CIMP	February 2014 *
Technical Advisory Committee Review and Comments on CIMP and draft EWMP Work Plan	April 2014 *
Submit final EWMP Work Plan	June 2014
Submit final CIMP	June 2014
Conduct initial RAA based on selected watershed control measures	December 2014*
Complete internal draft of EWMP	March 2015 *
Submit draft EWMP to Regional Water Board	June 2015
Submit Final EWMP to Regional Water Board (revised based on to Regional Water Board comments)	January 2016

* DATES ARE TENTATIVE ESTIMATES AND MAY CHANGE ON AN AS NEEDED BASIS

SECTION 7. COST ESTIMATE:

The cost estimate for the development of the EWMP is \$745,800 and the CIMP is \$100,000. This does not include implementation costs or ongoing maintenance costs. It is estimated that the cost of staff time for both City and County to administer, research, evaluate and prepare for reviews and approvals will exceed several hundred thousand dollars over the 30 month period.

SECTION 8. PERMITTEE MEMORANDUM OF UNDERSTANDING:

All Permittees to the EWMP are committed to the completion of the program development.

A copy of the final draft Memorandum of Understanding with a signed letter of intent for the County of Los Angeles, City of Santa Clarita, and the Los Angeles County Flood Control District are included in **Attachment A**

SECTION 9. COMMITMENT TO IMPLEMENT A STRUCTURAL BMP OR SUITE OF BMPS:

The Permittees listed in **Table 8** will implement the identified suite of BMPs to fulfill the obligations under Part VI.C.b.iii. (5).

Table 8. Structural BMP or Suite of BMPs to be Implemented in the EWMP Watershed

Watershed	Permittee	Structural BMP or Suite of BMPs to be Implemented	Planned Implementation Date
Santa Clara River	County of Los Angeles	Trash removal BMPs for up to 79 storm drain inlets in commercial and industrial park	July 2015
Santa Clara River	City of Santa Clarita	Trash removal BMPs for up to 110 storm drain inlets in commercial and industrial park	July 2015

SECTION 10. INCORPORATION OF THE LOS ANGELES RIVER WATERSHED PORTION OF THE CITY OF SANTA CLARITA INTO EWMP

The City of Santa Clarita is also including an extremely small area, 0.09 square miles (or 0.233 square kilometers) of the Los Angeles River watershed located within City limits in this Notice of Intent. The map of this area is in **Figure 2**. This small area is rural and undeveloped. There are no storm drains, gutters, catch basins, or Municipal Separate Storm Sewer Systems (MS4s) in this location. When it rains, the single paved road sheds water by sheet-flow to the surrounding open areas. The nearest tributary to the Los Angeles River is Bull Creek, which is located approximately 7 miles from this location. The City of Santa Clarita submitted a letter to the Regional Water Quality Control Board dated April 11, 2013 regarding the Los Angeles River Bacteria TMDL. In this letter we requested a revision to the square footage of Los Angeles River watershed that was within City limits and incorporation of this portion of the Los Angeles River Watershed into the EWMP process for the Santa Clara River That request is pending. Nevertheless, the City would proceed with conditioning development and requiring post construction best management practices as required by the MS4 NPDES Permit in the area. In order to meet the deadline required by the NOI, the City has included this section to address the small area and to incorporate it into the larger EWMP process. The TMDLs that will be included during the EWMP development period for the Los Angeles River that affect that reach are listed in **Table 9**.

In spite of its rural characteristics, the road is swept on a weekly basis and the City monitors the area regularly for any illegal dumping activity. Based on the Santa Clara River TMDL for Nitrogen and Effects TMDL modeling, aerial deposition of air pollution undeveloped lands is second highest source of nitrogen loading in the area. As referenced in Tables 4 and 5 the City of Santa Clarita is in the process of meeting the LID and green streets policies as required. The area would be incorporated as part of the EWMP analysis. The timelines are outlined in **Table 7**. It is anticipated the area would be assessed for pollution sources and considered for appropriate best management practices, including infiltration of the 85th percentile storm, from projects that propose installation of storm drains or new development. The City would follow its sustainability philosophy and pollutant prioritization to determine the best way to address this small drainage area in the City limits that is largely undeveloped open space.

Los Angeles County has developed its own compliance path for the Los Angeles River due to the large unincorporated lands in that watershed. Therefore, the areas for consideration in the EWMP are unique to the City of Santa Clarita. However, due to the nature of the joint relationship with Los Angeles County in this endeavor, it is difficult to separate out the work in the EWMP. Working with a single consultant is critical to efficient and cost effective work. Therefore, the intent is to incorporate only the City's area into the analysis and sequence the work appropriately. Therefore, this small portion will be incorporated under the same EWMP contract and effort.

Table 9. Los Angeles River Interim and Final Trash WQBELs and all other Final WQBELs and Receiving Water Limitations Occurring Before Enhanced Watershed Management Program Approval

TMDL Order	WQBEL	Interim or Final	Compliance Date
Los Angeles River Nitrogen Compounds and Related Effects TMDL R12 - 010	NH3-N (ammonia) One-hour average 10.1 mg/l	Final	December 28, 2012
	NH3-N (ammonia) 30 day average 2.3 mg/l		
	NO3-N (nitrate) 30 day average 8.0 mg/l		
	NO2-N (nitrite) 30 day average 1.0 mg/l		
	NO3-N + NO2-N 30 day average 8.0 mg/l		
Los Angeles River Watershed Trash TMDL - 2007 - 012	30% of baseline	Interim	September 30, 2012
	20% of baseline	Interim	September 30, 2013
	10% baseline	Interim	September 30, 2014
	3.3% baseline	Interim	September 30, 2015
	0 percent baseline	Final	September 30, 2016

CITY OF LOS ANGELES
CALIFORNIA



ANTONIO R. VILLARAIGOSA
MAYOR

BOARD OF
PUBLIC WORKS
—
COMMISSIONERS
—
CAPRI W. MADDOX
PRESIDENT

VALERIE LYNNE SHAW
VICE PRESIDENT

STEVEN T. NUTTER
PRESIDENT PRO TEMPORE

WARREN T. FURUTANI
COMMISSIONER

JERILYN LÓPEZ-MENDOZA
COMMISSIONER

BUREAU OF SANITATION

—
ENRIQUE C. ZALDIVAR
DIRECTOR

TRACI J. MINAMIDE
CHIEF OPERATING OFFICER

VAROUJ S. ABKIAN
ADEL H. HAGEKHALIL
ALEXANDER E. HELOU
ASSISTANT DIRECTORS

NEIL M. GUGLIELMO
ACTING CHIEF FINANCIAL OFFICER

—
WATERSHED PROTECTION DIVISION
1149 SOUTH BROADWAY, 10TH FLOOR
LOS ANGELES, CA 90015
TEL: (213) 485-0587
FAX: (213) 485-3939

June 27, 2013

Samuel Unger, Executive Officer
Los Angeles Regional Water Quality Control Board
320 West Fourth Street, Suite 200
Los Angeles, California 90013

Attention: Renee Purdy

Dear Mr. Unger:

**SUBMITTAL OF NOTICE OF INTENT FOR DEVELOPMENT OF ENHANCED
WATERSHED MANAGEMENT PROGRAM AND COORDINATED INTEGRATED
MONITORING PROGRAM FOR THE UPPER LOS ANGELES RIVER WATERSHED
MANAGEMENT AREA GROUP**

Please find attached the Notice of Intent (NOI) for the development of an Enhanced Watershed Management Program (EWMP) and Coordinated Integrated Monitoring Program (CIMP) for the Upper Los Angeles River Watershed Management Area Group (ULARWMA). The participating permittees of the ULARWMA Group have mutually agreed to a collaborative approach in meeting the requirements of the new MS4 Permit (Order No. R4-2012-0175). Please note that the ULARWMA Group does not have all MS4 permittees in the Upper Los Angeles River watershed participating as some have opted to develop their own strategy in complying with the MS4 Permit. The City of Los Angeles, as lead agency for the ULARWMA Group, has prepared this Notice of Intent on behalf of itself, the County of Los Angeles and Los Angeles County Flood Control District, and the Cities of Alhambra, Burbank, Calabasas, Glendale, Hidden Hills, La Canada Flintridge, Montebello, Monterey Park, Pasadena, Rosemead, San Gabriel, South Pasadena, San Marino, Temple City. All agencies have reviewed and approved this NOI for submission to your Board, and we appreciate the collaboration by the participating MS4 co-permittees in the preparation of the NOI materials.

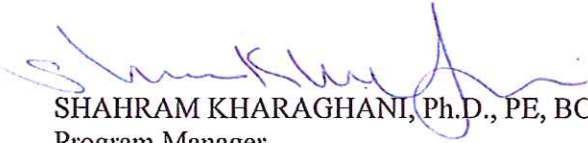
The attached document satisfies the requirements for submitting the NOI as provided by Part VI.C.4.b of the MS4 Permit and the CIMP notification requirements as provided by Attachment E Section IV.C.1. We look forward to continuing the process of plan developments for the

Mr. Samuel Unger, Executive Officer
June 27, 2013
Page 2

ULARWMA group with the Technical Advisory Committee, the Los Angeles Regional Water Quality Control Board, and other watershed stakeholders.

Should you have any questions about this submittal, please contact me at Shahram.Kharaghani@lacity.org or phone (213) 485-0587 or your staff may contact Alfredo Magallanes at Alfredo.Magallanes@lacity.org or phone (213) 485-3958.

Sincerely



SHAHRAM KHARAGHANI, Ph.D., PE, BCEE
Program Manager

SK:AM:am
WPDCR9047

Attachment

cc: Renee Purdy, California Regional Water Quality Control Board, Los Angeles Region
Ivar Ridgeway, California Regional Water Quality Control Board, Los Angeles Region
Enrique Zaldivar, City of Los Angeles, Bureau of Sanitation
Adel Hagekhalil, City of Los Angeles, Bureau of Sanitation
Gary Hildebrand, County of Los Angeles, Department of Public Works
Jolene Guererro, County of Los Angeles, Department of Public Works
Alvin Cruz, City of Burbank
Alex Farassati, City of Calabasas
Amy Ho, City of Monterey Park
Armond Ghazarian, County of Los Angeles, Department of Public Works
David Dolphin, City of Alhambra
Daren Grilley, City of San Gabriel
Edward Hitti, City of La Canada Flintridge
Elaine Unitake, County of Los Angeles,
Elroy Kiepke, Willdan Engineering
John Hunter, John L. Hunter and Associates
Joe Bellomo, City of Hidden Hills,
Kevin Sales, City of San Marino
Luis Perez, County of Los Angeles
Mark Perisco, City of Temple City
Maurice Oillataguerre, City of Glendale,
Michelle Marquez-Riley, City of El Monte
Mikki Klee, John Hunter and Associates
Norma Salinas, City of Montebello
Sean Sullivan, City of Rosemead
Sheila Kennedy, Enfact Solutions
Shin Furukawa, City of South Pasadena
Steve Walker, City of Pasadena
Tona Avalos, County of Los Angeles, Department of Public Works
Ying Kwan, City of La Canada Flintridge

NOTICE OF INTENT

Enhanced Watershed Management Program and Coordinated Integrated Monitoring Program

Submitted by the:

Upper Los Angeles River Watershed Group

City of Los Angeles

County of Los Angeles

Los Angeles County Flood Control District

City of Alhambra

City of Burbank

City of Calabasas

City of Glendale

City of Hidden Hills

City of La Canada Flintridge

City of Montebello

City of Monterey Park

City of Pasadena

City of Rosemead

City of San Gabriel

City of San Marino

City of South Pasadena

City of Temple City

June 28, 2013

1. Introduction

The Upper Los Angeles River Watershed Group respectfully submits this Notice of Intent (NOI) to develop an Enhanced Watershed Management Program (EWMP) for the Upper Los Angeles River Watershed per Part VI.C.4.b.i of Order No. R4-2012-0175 (MS4 Permit). The Upper Los Angeles River Watershed Group (Group) includes the following entities: the Cities of Los Angeles, Alhambra, Burbank, Calabasas, Glendale, Hidden Hills, La Canada Flintridge, Montebello, Monterey Park, Pasadena, Rosemead, San Gabriel, San Marino, South Pasadena, and Temple City; the County of Los Angeles; and, the Los Angeles County Flood Control District. This NOI includes a statement of the Group's intent to follow a Coordinated Integrated Monitoring Program (CIMP) approach.

The Los Angeles River Watershed encompasses approximately 834 square miles and includes 43 different cities as well as unincorporated Los Angeles County. The 303(d) List has identified the Los Angeles River Watershed as being impaired by several pollutants. Accordingly, the California Regional Water Quality Control Board, Los Angeles Region (LARWQCB) and the U.S. Environmental Protection Agency (USEPA) have adopted and/or established several TMDLs for the receiving waters throughout the Los Angeles River Watershed. The Group proposes the development of an EWMP specifically for the Upper Los Angeles River Watershed as the most effective approach to utilize opportunities to retain and reuse runoff and to address the unique challenges of the watershed. The Group does not include all jurisdictions located within the watershed; thus, this EWMP and CIMP will only apply to those areas governed by the participating entities, delineated in Attachment 1. All drainage infrastructure operated and maintained by the LACFCD within the boundaries shown in Attachment 1 are also covered under this EWMP and CIMP.

The Group has been collaborating since the first Los Angeles River Watershed TMDLs were adopted by the LARWQCB. TMDL-related monitoring in the Upper Los Angeles River Watershed has been implemented in a coordinated manner and is being cost-shared by all Upper Los Angeles River Watershed Group members as well as Caltrans.

The City of Los Angeles will act as the lead agency for developing the EWMP and CIMP; however, development of the Work Plan, CIMP, and EWMP Plan will be a collaborative process between all members of the Group, coordinated with the Technical Advisory Committee as well as with watershed stakeholders.

The following sections:

- a) Satisfy the EWMP requirements for NOI submittal as provided by Section VI.C.4.b of the MS4 Permit;
- b) Satisfy the CIMP notification requirements as provided by Attachment E Section IV.C.1.; and,
- c) Provide the LARWQCB with additional information on the approach that the Group intends to follow for EWMP development.

2. Notification of Intent (Section VI.C.4.b.i and Attachment E Section IV.C.1.)

With this NOI, the Group hereby notifies the LARWQCB of their intention to collaboratively develop an EWMP for the Upper Los Angeles River Watershed, request a Work Plan due date of 18 months after the effective date of the MS4 Permit (June 28, 2014), and request a draft EWMP Plan due date of 30 months after the effective date of the MS4 Permit (June 28, 2015).

Additionally, with this NOI, the Group notifies the LARWQCB of their intention to collaboratively develop a CIMP for the Upper Los Angeles River Watershed, and request a draft CIMP due date of 18 months after the effective date of the MS4 Permit (June 28, 2014).

3. Interim and Final TDML Compliance Deadlines (Section VI.C.4.b.ii)

Table 1 lists the TMDLs that apply to the Upper Los Angeles River subwatershed of the Los Angeles River Watershed Management Area. Interim and final compliance deadlines of the Los Angeles River Watershed Trash

TMDL and final compliance deadlines of other TMDLs occurring prior to the anticipated approval date of the EWMP (April 28, 2016) are included in Table 2.

The watershed control measures that will be implemented to meet the requirements of the interim and final trash water quality based effluent limits (WQBELs) and all other final WQBELs are described in more detail in Section 12 of this NOI submittal.

Table 1. TMDLs Applicable to Upper Los Angeles River Watershed

TMDL	LARWQCB Resolution Number	Effective Date and/or EPA Approval Date
Los Angeles River Watershed Trash TMDL	2007-012	09/23/2008
Los Angeles River Nitrogen Compounds and Related Effects TMDL	2003-009	03/23/2004
Los Angeles River Watershed Bacteria TMDL	R10-007	03/23/2012
Los Angeles River and Tributaries Metals TMDL	2007-014	10/29/2008
Legg Lake Trash TMDL	2007-010	03/06/2008
Dominguez Channel and Greater Los Angeles and Long Beach Harbor Waters Toxic Pollutants TMDL	R11-008	03/23/2012
Long Beach City Beaches and Los Angeles River Estuary Bacteria TMDL	USEPA Established TMDL	03/26/2012
Los Angeles Area Lakes TMDLs for Lake Calabasas, Echo Park Lake, and Legg Lake	USEPA Established TMDL	03/26/2012

Table 2. Interim (Trash) and Final TMDL Compliance Deadlines Prior to EWMP Approval

TMDL	Milestone	Interim/Final	Deadline
Los Angeles River Watershed Trash TMDL	20% reduction of baseline load	Interim	09/30/2005
	30% reduction of baseline load	Interim	09/30/2006
	40% reduction of baseline load	Interim	09/30/2007
	50% reduction of baseline load	Interim	09/30/2008
	60% reduction of baseline load	Interim	09/30/2009
	70% reduction of baseline load	Interim	09/30/2010
	80% reduction of baseline load	Interim	09/30/2013
	90% reduction of baseline load	Interim	09/30/2014
	96.7% reduction of baseline load	Interim	09/30/2015
Legg Lake Trash TMDL	100% reduction of baseline load	Final	09/30/2016
	20% reduction of baseline load	Interim	03/06/2012
	40% reduction of baseline load	Interim	03/06/2013
	60% reduction of baseline load	Interim	03/06/2014
	80% reduction of baseline load	Interim	03/06/2015
Los Angeles River Watershed Nitrogen Compounds and Related Effects TMDL	100% reduction of baseline load	Final	03/06/2016
	100% of MS4 drainage area complies with waste load allocations	Final	03/23/2004

4. Geographical Scope (Section VI.C.4.b.iii.(1))

As previously mentioned, this EWMP for the Upper Los Angeles River Watershed only covers the areas associated with the participating entities, known collectively as the Upper Los Angeles River Watershed Group (Group). The Group includes the Cities of Los Angeles, Alhambra, Burbank, Calabasas, Glendale, Hidden Hills, La Canada Flintridge, Montebello, Monterey Park, Pasadena, Rosemead, San Gabriel, San Marino, South Pasadena, and Temple City; the County of Los Angeles, and the Los Angeles County Flood Control District (LACFCD). Thus, the area

included in this Upper Los Angeles River Watershed EWMP is approximately 479 square miles. This includes the drainage infrastructure operated and maintained by the LACFCD within the above jurisdictions as well as those within the non-participating Cities of San Fernando, Compton, Irwindale, El Monte, and South El Monte. Attachment 1 provides a map of the watershed boundaries, land areas of the participating MS4 Permittees, and the other entities within the watershed that will be covered in this EWMP.

The Los Angeles River is approximately 55 miles long. The natural hydrology of the Los Angeles River Watershed has been altered by channelization and the construction of dams and flood control reservoirs. The Los Angeles River and many of its tributaries are lined with concrete for most or all of their lengths. Soft-bottomed segments of the Los Angeles River occur where groundwater upwelling prevented armoring of the river bottom.

The Los Angeles River has been divided into six reaches (listed here from upstream to downstream):

- Reach 6 begins at the headwaters of the Los Angeles River (the confluence of Arroyo Calabasas and Bell Creek) and extends to Balboa Boulevard.
- Reach 5 runs from Balboa Boulevard through the Sepulveda Basin.
- Reach 4 runs from Sepulveda Dam to Riverside Drive.
- Reach 3 runs from Riverside Drive to Figueroa Street.
- Reach 2 runs from Figueroa Street to Carson Street.
- Reach 1 runs from Carson Street to the estuary.

In addition, the Los Angeles River is also divided into five segments:

- Segment A includes lower Reach 2 and Reach 1 from Rosecrans Avenue to Willow Street.
- Segment B includes upper and middle Reach 2 from Figueroa Street to Rosecrans Avenue.
- Segment C includes lower Reach 4 and Reach 3 from Tujunga Avenue to Figueroa Street.
- Segment D includes Reach 5 and upper Reach 4 from Balboa Boulevard to Tujunga Avenue.
- Segment E includes Reach 6 from the headwaters of the Los Angeles River to Balboa Boulevard.

Major tributaries to Upper Los Angeles River Watershed include Aliso Creek, Bell Creek, Bull Creek, Tujunga Wash, Burbank Western Channel, Arroyo Seco, Rio Hondo, and Compton Creek.

The total area of the Upper Los Angeles River Watershed is XX square miles; however, this EWMP only covers the areas associated with the Group, encompassing approximately XX square miles. Table 3 provides a summary of the areas associated with the participating MS4 Permittees and other participating agencies. Collectively, the MS4 Permittees in the Upper Los Angeles River Watershed have jurisdiction over 479 square miles or 57.43% of the total watershed area. The Group has no jurisdiction over the land that is owned by the State of California (i.e., California Department of Fish and Wildlife, the State Lands Commission, and Caltrans) and the US Government.

Table 3. Upper LA River Watershed Area Distribution for Entities participating in this EWMP

Agency	Area (acres)	Area (percent)
City of Los Angeles	181,288.00	59.22
County of Los Angeles	40,553.34	13.25
Los Angeles County Flood Control District	N/A	N/A
City of Alhambra	4,884.31	1.60
City of Burbank	11,095.20	3.62
City of Calabasas	4,005.68	1.31
City of Glendale	19,587.50	6.40
City of Hidden Hills	961.03	0.31
City of La Canada Flintridge	5,534.46	1.81
City of Montebello	5,356.38	1.75
City of Monterey Park	4,951.51	1.62
City of Pasadena	14,805.30	4.84
City of Rosemead	3,310.87	1.08
City of San Gabriel	2,644.87	0.86
City of San Marino	2,409.64	0.79
City of South Pasadena	2,186.20	0.71
City of Temple City	2,576.50	0.84
Group Total	306,150.79	100

5. Plan Concept (Section VI.C.4.b.iii.(1))

Collectively, the Group has developed several Implementation Plans that include strategies for demonstrating compliance with the Los Angeles River Watershed Bacteria and Metals TMDLs. The Implementation Plans and strategies for compliance are based on a multi-pollutant approach that maximizes the retention and use of urban runoff as a resource for groundwater recharge and irrigation. The Group has collaborated with key watershed stakeholders to identify the distributed and regional BMPs as part of the Implementation Plans. The Upper Los Angeles River Watershed EWMP will further enhance the TMDL implementation plans; re-evaluate the proposed watershed control measures; identify additional regional projects to maximize opportunities for retaining all non-stormwater runoff and stormwater from the 85th percentile, 24-hour storm event; and, identify additional watershed control measures for those areas in the watershed that cannot be addressed by a regional project.

In order to meet the requirements of the MS4 Permit, the Group will develop the following documents:

- A Work Plan for submittal to the LARWQCB by June 28, 2014. The Work Plan will meet the requirements of the MS4 Permit, provide an understanding of where the agencies are today, and outline a path forward.
- A CIMP for submittal to the LARWQCB by June 28, 2014. The CIMP will address all TMDL monitoring requirements applicable to the Los Angeles River Watershed and all five monitoring elements of the MS4 Permit Monitoring and Reporting Program (MRP).
- An EWMP Plan for draft submittal to the LARWCB by June 28, 2015 and final submittal by January 28, 2016. Using the information developed for the Work Plan, the EWMP will meet the requirements of the MS4 Permit.

6. Cost Estimate (Section VI.C.4.b.iii.(2))

The Group collaboratively prepared a scope of work and cost estimate for developing the Work Plan, the CIMP, and the EWMP for the participating areas within the Upper Los Angeles River Watershed. It is estimated that the cost for the Work Plan, the CIMP, and the EWMP Plan development is approximately \$1.45 million. This estimate assumes that the CIMP and EWMP will, in part, be based on the existing TMDL Coordinated Monitoring Plans and any available Implementation Plans. In addition, the Group will contribute several hundred thousands of dollars in in-kind services and contract administration costs.

7. Memorandum of Understanding (Section VI.C.4.b.iii.(3))

Attachment 2 includes the final draft of the Memoranda of Agreement between the City of Los Angeles, as the lead agency, and the other Group members. All agencies have committed to the execution of these agreements as indicated by the signed letters of intent (Attachment 3). The agreements will be executed before December 28, 2013.

8. Interim Milestones and Deadlines for Plan Development (Section VI.C.4.b.iii.(4))

Table 4 summarizes the interim milestone and deadlines based on the scope of work for developing the Work Plan, CIMP, and EWMP agreed to by the Group. In addition to the monthly agency coordination meetings and coordination meetings with the Technical Advisory Committee, the schedule in Table 4 assumes meetings and/or workshops with local watershed stakeholders. Technical memorandums summarizing information and approaches utilized by the Group in developing the Work Plan, CIMP, and EWMP Plan will be submitted and viewed as interim milestones. It is expected that the draft technical memos will not be finalized per section; rather, the information presented in the memos will be revised based on comments and presented in the final Work Plan, CIMP, and EWMP Plan.

Table 4. Proposed Interim Milestones and Deadlines for Plan Development

Deliverable	Milestones and Deadlines
Work Plan	
Draft Technical Memos <ul style="list-style-type: none"> • Identification of water quality priorities • Existing and future watershed control measures, identification of potential regional projects • Reasonable assurance analysis approach • BMP selection approaches 	March 2014
Draft Work Plan	April 2014
Final Work Plan Submitted to the LARWQCB	June 2014
Coordinated Integrated Monitoring Plan	
Draft Technical Memos <ul style="list-style-type: none"> • Outfall and receiving water monitoring approach • Monitoring sites selection • New development and redevelopment effectiveness tracking 	March 2014
Draft CIMP	April 2014
Final Draft CIMP Submitted to the LARWQCB	June 2014
Enhanced Watershed Management Program	
Draft Technical Memos <ul style="list-style-type: none"> • Approach to USEPA TMDLs, 303(d) listings, other exceedances of RWLs • Final selection of regional projects • Feasibility analyses of regional projects, customization of MCMs, identification of other BMPs • Project schedules and cost estimates 	April 2015
Draft EWMP	May 2015
Final Draft EWMP Submitted to the LARWQCB	June 2015

9. Structural BMP (Section VI.C.4.b.iii.(5))

During the 30-month EWMP Plan development, the Group will be implementing two structural BMPs to demonstrate its responsibility to improving water quality in the watershed. The goal of both projects is to utilize dry- and wet-weather runoff after natural treatment for the beneficial use of surface irrigation or infiltration. The cumulative investment by the County of Los Angeles and the City of Los Angeles for these projects is that of \$7.4

million. These two structural BMP projects are summarized below. More information can be found on the Project Fact Sheets included as Attachment 4.

Brandon Street and Green Street Improvements Project (County of Los Angeles)

The project will reconstruct approximately 0.16 miles of roadway on Green Street and 0.39 miles on Brandon Street. The design includes several green street elements including permeable pavers, bio-retention planters, sediment filtration catch basins, and an underground infiltration basin. Much of the runoff from the streets and private properties that would have otherwise drained to the Rio Hondo will be directed to the infiltration area. This will help to augment groundwater supplies and prevent pollutants from entering the Los Angeles River.

Humboldt Greenway Project

This project will intercept an existing storm drain system and construct a stormwater greenway with a “stream” eco-system through the corridor on Humboldt Street with a pedestrian path connecting Avenue 18 and Avenue 19. The project is adjacent to the Los Angeles River, just north of Civic Center area of the City of Los Angeles. The bioremediation elements include a pollution reduction/infiltration system and an approximately 175-foot long graded swale/open-channel, which is surrounded by a vegetated basin. Work also includes a) an overflow structure; b) a pedestrian bridge; c) an irrigation system; d) landscaping and tree planting; and e) solar lighting.

10. LID Ordinance (Sections VI.C.4.b.iii.(6) and VI.C.4.c.iv.(1))

Table 5 summarizes the status of Low Impact Development (LID) ordinances mandated by the Group. As presented in Table 5, greater than 50% of the land area addressed by the geographical scope of the Group is addressed by an LID ordinance that is in place.

Table 5. Upper LA River Watershed Group EWMP Area Percentage Addressed by LID Ordinances

Agency	Area (percent)	Status LID ordinance SEE NOTE BELOW
City of Los Angeles	59.22	Revising Ordinance
County of Los Angeles	13.25	Draft Ordinance
LACFCO	N/A	N/A
City of Alhambra	1.60	In Development
City of Burbank	3.62	In Development
City of Calabasas	1.31	In Development
City of Glendale	6.40	In Development
City of Hidden Hills	0.31	In Development
City of La Canada Flintridge	1.81	In Development
City of Montebello	1.75	In Development
City of Monterey Park	1.62	In Development
City of Pasadena	4.84	In Development
City of Rosemead	1.08	In Development
City of San Gabriel	0.86	In Development
City of San Marino	0.79	In Development
City of South Pasadena	0.71	In Development
City of Temple City	0.84	In Development

Note:

- 1. Revising Ordinance.** The City of Los Angeles LID Ordinance became effective on May 12, 2012. The City is currently amending sections of the LID Ordinance, as well as its Stormwater and Urban Runoff Pollution Control Ordinance (L.A.M.C. Chapter VI, Article 4.4) to meet all the MS4 Permit requirements.
- 2. Draft Ordinance.** Permittee has completed or will complete by June 28, 2013 the development of a draft LID Ordinance that is in compliance with the MS4 Permit for its portion of the watershed.
- 3. In Development.** Permittee initiated development of an LID Ordinance that is in compliance with the requirements of the MS4 Permit for its portion of the watershed.

11. Green Street Polices (Sections VI.C.4.b.iii.(6) and VI.C.4.c.iv.(2))

Table 6 summarizes the status of green street policies observed by the Group. As presented in Table 6, greater than 50% of the land area addressed by the geographical scope of the EMWP is addressed by green streets policies that are in place.

Table 6. Summary of Percent EWMP Area Addressed by Green Street Policies

EWMP agency	% EWMP area	Status green street policies SEE NOTE BELOW
City of Los Angeles	59.22	In Effect
County of Los Angeles	13.25	In Development
LACFCD	N/A	N/A
City of Alhambra	1.60	In Development
City of Burbank	3.62	In Development
City of Calabasas	1.31	In Development
City of Glendale	6.40	In Development
City of Hidden Hills	0.31	In Development
City of La Canada Flintridge	1.81	In Development
City of Montebello	1.75	In Development
City of Monterey Park	1.62	In Development
City of Pasadena	4.84	In Development
City of Rosemead	1.08	In Development
City of San Gabriel	0.86	In Development
City of San Marino	0.79	In Development
City of South Pasadena	0.71	In Development
City of Temple City	0.84	In Development

Note:

1. **In Effect.** Permittee has adopted a Green Street Policy that is in compliance with the requirements of the MS4 Permit for its portion of the watershed.
2. **Draft Policy.** Permittee has completed or will complete by June 28, 2013 the development of a draft Green Street Policy that is in compliance with the MS4 Permit for its portion of the watershed.
3. **In Development.** Permittee initiated development of a Green Street Policy that is in compliance with the requirements of the MS4 Permit for its portion of the watershed.

12. Implementation of Watershed Control Measures during Plan Development (Section VI.C.4.b.ii)

The Group has developed TMDL Implementation Plans incorporating structural and institutional watershed control measures for a multi-pollutant and multi-benefit approach, as well as the timelines for implementation to meet the water quality limitations of the various TMDLs. Table 7 summarizes the TMDL Implementation Plans that have been developed to date. Three TMDLs have interim and/or final compliance milestones prior to the final approval of the EWMP by April 28, 2016, as shown in Table 2, that will be met through the continued implementation efforts as outlined in the Implementation Plans. The Group will continue their efforts to implement the actions of the TMDL Implementation Plans concurrently with the development of the Upper Los Angeles River Watershed EWMP. Attachment 5 provides more details of the ongoing and planned actions.

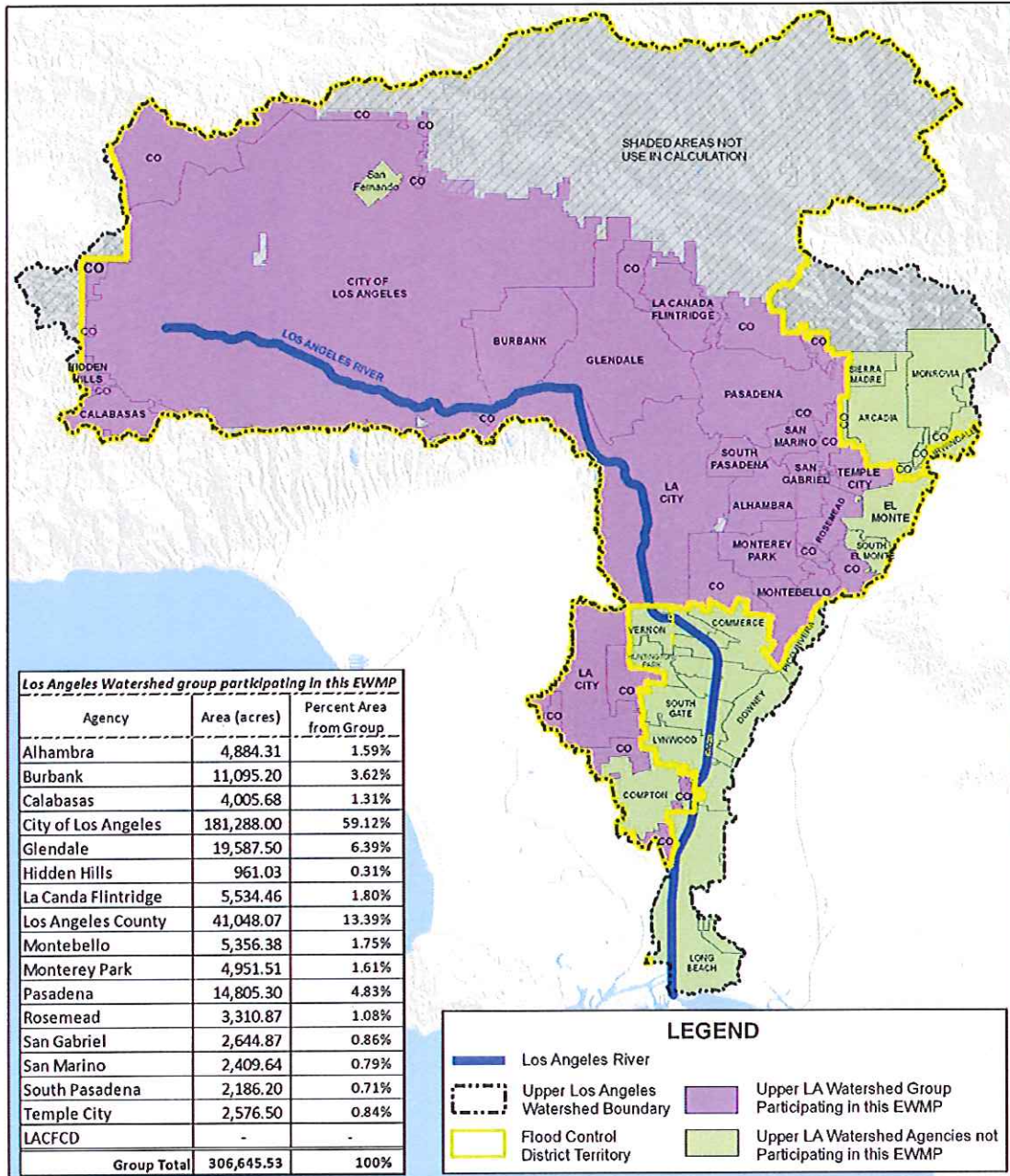
Table 7. Implementation Plans for Upper Los Angeles River Watershed TMDLs

Implementation Plan	Agencies	Plan Status
Implementation Plan for Upper Los Angeles River Watershed Metals TMDL	Cities of Los Angeles, Alhambra, Burbank, Calabasas, Glendale, Hidden Hills, La Canada Flintridge, Montebello, Monterey Park, Pasadena, Rosemead, San Gabriel, San Marino, South Pasadena, and Temple City; Caltrans	Final plan submitted 10/07/2010
Multi-Pollutant TMDL Implementation Plan for the Unincorporated County Area of Los Angeles River Watershed	County of Los Angeles	Final plan submitted 10/07/2010

Three TMDLs have interim and/or final compliance milestones prior to the final approval of the EWMP by April 28, 2016 as summarized in Table 2. The Upper Los Angeles River Watershed Group will continue the implementation of watershed control measures concurrently with EWMP Plan development to ensure compliance with these interim and/or final milestones, as follows:

- **Interim and final milestones of the Los Angeles River Watershed Trash TMDL:** Each EWMP agency has developed its own program for compliance with this TMDL. Agency-specific programs and the status of implementation and compliance are provided in Attachment 5.
- **Interim and final milestones of the Legg Lake Trash TMDL:** The County of Los Angeles is in compliance with this TMDL.
- **Final compliance milestone of the Los Angeles River Watershed Nitrogen Compounds and Related Effects TMDL:** As required by this TMDL, the Monitoring Work Plan to Assess Nutrient Loading from the Municipal Separate Storm Sewer System was submitted on March 23, 2005.

Attachment 1 - Upper Los Angeles River Watershed Group Map



Upper Los Angeles River Watershed EWMP Agencies

BUREAU OF SANITATION

	ENRIQUE C. ZALDIVAR DIRECTOR		SHAHRAM KHARAGHANI PROGRAM MANAGER	
	UL ARW_EVMPAgencies	DRAWN BY: NH	CHECKED BY:	DATE 6/18/2013 DATE REVISID:

This map shall not be copied or reproduced all or any part thereof, whether for distribution or resale without the proper written permission of the Dept. of Public Works, City of Los Angeles
Thomas Eros Data reproduce with permission granted by THOMAS EROS MAP



Attachment 2 - Draft Memorandum of Understanding

MEMORANDUM OF UNDERSTANDING
BETWEEN

THE CITY OF LOS ANGELES, THE CITY OF ALHAMBRA, THE CITY OF BURBANK,
THE CITY OF CALABASAS, THE CITY OF GLENDALE, THE CITY OF HIDDEN HILLS,
THE CITY OF LA CANADA FLINTRIDGE, THE CITY OF MONTEBELLO, THE CITY OF
MONTEREY PARK, THE CITY OF PASADENA, THE CITY OF ROSEMEAD, THE CITY
OF SAN GABRIEL, THE CITY OF SAN MARINO, THE CITY OF SOUTH PASADENA,
THE CITY OF TEMPLE CITY, THE LOS ANGELES COUNTY FLOOD CONTROL
DISTRICT, AND THE COUNTY OF LOS ANGELES
REGARDING THE ADMINISTRATION AND COST SHARING FOR DEVELOPMENT OF
THE ENHANCED WATERSHED MANAGEMENT PROGRAM AND THE COORDINATED
INTEGRATED MONITORING PROGRAM FOR THE UPPER LOS ANGELES RIVER
WATERSHED

REGARDING THE ADMINISTRATION AND COST SHARING FOR DEVELOPMENT OF
THE ENHANCED WATERSHED MANAGEMENT PROGRAM AND THE COORDINATED
INTEGRATED MONITORING PROGRAM FOR THE UPPER LOS ANGELES RIVER
WATERSHED

This Memorandum of Understanding (MOU) is made and entered into as of the date of the last signature set forth below by and between: the City of Los Angeles, a municipal corporation; the City of Alhambra, a municipal corporation; the City of Burbank, a municipal corporation; the City of Calabasas, a municipal corporation; the City of Glendale, a municipal corporation; the City of Hidden Hills, a municipal corporation; the City of La Canada Flintridge, a municipal corporation; the City of Montebello, a municipal corporation; the City of Monterey Park, a municipal corporation; the City of Pasadena, a municipal corporation; the City of Rosemead, a municipal corporation; the City of San Gabriel, a municipal corporation; the City of San Marino, a municipal corporation; the City of South Pasadena, a municipal corporation; the City of Temple City, a municipal corporation; the Los Angeles County Flood Control District (LACFCD), a political subdivision of the State of California; and the County of Los Angeles, a political subdivision of the State of California. Collectively, these entities shall be known herein as "Parties" or individually as "Party."

WITNESSETH

WHEREAS, the Regional Water Quality Control Board, Los Angeles Region ("Regional Board") adopted National Pollutant Discharge Elimination System Municipal Separate Storm Sewer System Permit Order No. R4-2012-0175 (MS4 Permit); and

WHEREAS, the MS4 Permit became effective on December 28, 2012 and requires that the LACFCD, County of Los Angeles, and 84 of the 88 cities (excluding Avalon, Long Beach, Palmdale, and Lancaster) within the County of Los Angeles comply with the prescribed elements of the MS4 Permit; and

WHEREAS, the MS4 Permit identified the Parties as the MS4 permittees that are responsible for compliance with the MS4 Permit requirements pertaining to the Los Angeles River Watershed Management Area; and

WHEREAS, the Parties have agreed to collaborate on the development of an Enhanced Watershed Management Program (EWMP) for the Los Angeles River Watershed Management Area to comply with certain elements of the MS4 Permit; and

WHEREAS, the Parties agree that each shall assume full and independent responsibility for ensuring its own compliance with the MS4 Permit despite the collaborative approach of the MOU; and

WHEREAS, the development of an EWMP includes the preparation of a Work Plan, a draft and final Coordinated Integrated Monitoring Plan ("CIMP"), and a draft and final Enhanced Watershed Management Program Plan ("EWMP Plan"), collectively referred to herein as "Plans"; and

WHEREAS, the Parties collaboratively prepared a final Scope of Work and Request for Proposal to obtain a Consultant for preparing the Plans that will satisfy the requirements of the MS4 Permit; and

WHEREAS, the Parties have determined that hiring a Consultant to prepare and deliver the Plans will be beneficial to the Parties and they desire to participate and will provide funding in accordance with the cost allocation on Exhibit A; and

WHEREAS, the Parties have agreed that the total cost for developing the Plans shall not exceed \$1,593,410.05 including the project administration and management cost but excluding 10% contingency; and

WHEREAS, the Parties have agreed to retain the City of Los Angeles to coordinate the services of a Consultant to develop the Plans, the Parties have agreed to share in the cost and pay the City of Los Angeles for these consultant services as provided by Exhibit A of this MOU, and the City of Los Angeles has agreed to act on behalf of all Parties in the preparation of the Plans and the coordination of the consultant services;

NOW, THEREFORE, in consideration of the mutual benefits to be derived by the Parties, and of the promises contained in this MOU, the Parties agree as follows:

Section 1. Recitals: The recitals set forth above are fully incorporated into this MOU.

Section 2. Purpose: The purpose of this MOU is to cooperatively fund the preparation and submittal of the Plans to the Regional Board.

Section 3. Cooperation: The Parties shall fully cooperate with one another to attain the purpose of this MOU.

Section 4. Voluntary: This MOU is voluntarily entered into for the purpose of preparing and submitting the Plans to the Regional Board.

Section 5. Term: This MOU shall become effective on the last date of execution by the Parties or December 28, 2013, whichever comes first, and shall remain and continue to remain in effect until June 30, 2016. If a Party does not execute this MOU by December 28, 2013, that Party shall be excluded from this MOU and this MOU shall become effective on December 28, 2013 by execution by the remaining Parties.

Section 6. Assessment for Proportional Cost: The Parties agree to pay the City of Los Angeles for preparation and delivery of the Plans in the amounts shown in Table (4) of Exhibit A, based on the total costs shown in Tables (1) and (2) and the cost allocation formula shown in Table (3) of Exhibit A, attached hereto and made part of this MOU by this reference. The City of Los Angeles will invoice the Parties in two installments upon execution of this MOU as shown in Table (4) of Exhibit A, based on the allocated costs for developing the Plans by the Consultant and the project administration and management costs at a percentage of 10% of the allocated costs for development of the Plans. At the end of each fiscal year, the City of Los Angeles will provide the Parties with a statement with the actual expenditures. Unexpended funds at the termination of this MOU will be returned to the Parties in accordance with the cost allocation formula set forth in Table (3) of Exhibit A.

Section 7. City of Los Angeles agrees:

- a. To solicit proposals for, award and administer a Consultant contract for the preparation and delivery of the Plans. The City of Los Angeles will be reimbursed for the administration and management of the Consultant contract as described in Exhibit A.
- b. To utilize the funds deposited by the Parties only for the administration of the Consultant contract, project management, and the preparation and completion of the Plans.
- c. To provide the Parties with an electronic copy of the technical memos, draft Plans and completed Plans within 10 business days of receipt from the Consultant.
- d. To notify the Parties if the actual cost for the preparation of the Plans will exceed the cost estimates shown on Exhibit A and obtain approval of the increase from the Parties. Upon approval of the cost increase by the Parties, the City of Los Angeles will invoice the Parties per the cost allocation formula on Exhibit A.
- e. To ensure all comments and concerns raised by the Parties during the preparation of the Plans are addressed to the satisfaction of the simple majority of the Parties.
- f. To invoice the Parties in the amounts and according to the schedule shown in Table 4 of Exhibit A.

- g. To provide an accounting within 90 days after at the termination of the MOU or within 90 after the early termination of the MOU pursuant to Section 11. The City of Los Angeles shall return the unused portion of all funds deposited with the City of Los Angeles in accordance with the cost allocation formula set forth in Table 3 in Exhibit A.

Section 8. The Parties further agree:

- a. To make a full faith effort to cooperate with one another to achieve the purposes of this MOU by providing information about project opportunities, reviewing deliverables in a timely manner, and informing administration and council and appropriate legislative bodies.
- b. To fund the cost of the preparation and delivery of the Plans and to pay the City of Los Angeles for the preparation and delivery of the Plans based on the cost allocation shown in Exhibit A. This includes the costs incurred by the City of Los Angeles for administering the Consultant services between awarding the Consultant contract and the execution of this MOU.
- c. To grant access rights and entry to the City of Los Angeles and the Consultant during the terms of this MOU to the Parties' facilities (i.e. storm drains, channels, catch basins, properties, etc.) ("Facilities") to achieve the purposes of this MOU. Prior to exercising said right of entry, the City of Los Angeles or their Consultant shall provide written notice to the Parties at least 72 hours in advance. For the purposes of this provision, written notice shall include notice delivered via e-mail that has been delivered to the Parties' representatives identified in Exhibit B. The City of Los Angeles shall require the Consultant retained pursuant to this MOU to agree to indemnify, defend, and hold harmless each Party, its special districts, elected and appointed officers, employees, and agents, from and against any and all liability, including but not limited to demands, claims, actions, fees, costs, and expenses (including attorney and expert fees), arising from or connected with the Consultant's performance of its agreement with the City of Los Angeles. In addition, the City of Los Angeles shall require the Consultant to carry, maintain, and keep in full force and effect an insurance policy or policies, and each Party, its officers, employees, attorneys, and designated volunteers shall be named as additional insured on the policy(ies) with respect to liabilities arising out of the Consultant's work. These requirements will also apply to any subcontractors hired by the Consultant.

Section 9. Invoice and Payment

- a. Payment: The Parties shall pay the City of Los Angeles their proportional share of the cost for the preparation and delivery of the Plans and project administration and management as shown in Table 4 of Exhibit A. Payments are due within sixty (60) days of receiving the invoice from the City of Los Angeles.

- b. Invoice: The City of Los Angeles will invoice Parties in two installments in the amounts shown in Table 4 of Exhibit A. The first invoice will be sent upon execution of this MOU or in January 2014, whichever comes first. The second invoice will be sent in July 2014.
- c. Contingency: The City of Los Angeles will notify the Parties if actual expenditures are anticipated to exceed the cost estimates contained in Exhibits A and obtain approval of such expenditures from all Parties. Upon approval, the Parties agree to reimburse the City of Los Angeles for their proportional share of these additional expenditures at an amount not to exceed 10% of the original cost estimate as shown in Exhibit A. This 10% contingency will not be invoiced, unless actual expenditures exceed the original cost estimate. Expenditures that exceed the 10% contingency will require an amendment of this MOU.

Section 10. Indemnification

- a. Each Party shall indemnify, defend, and hold harmless each other Party, including its special districts, elected and appointed officers, employees, and agents, from and against any and all liability, including but not limited to demands, claims, actions, fees, costs, and expenses (including attorney and expert witness fees), arising from or connected with the respective acts of each Party arising from or related to this MOU; provided, however, that no party shall indemnify another party for that party's own negligence or willful misconduct.
- b. In light of the provisions of Section 895.2 of the Government Code of the State of California imposing certain tort liability jointly upon public entities solely by reason of such entities being parties to an agreement (as defined in Section 895 of said Code), each of the Parties hereto, pursuant to the authorization contained in Section 895.4 and 895.6 of said Code, shall assume the full liability imposed upon it or any of its officers, agents, or employees, by law for injury caused by any act or omission occurring in the performance of this MOU to the same extent that such liability would be imposed in the absence of Section 895.2 of said Code.
- c. To achieve the above stated purpose, each Party indemnifies, defends, and holds harmless each other Party for any liability, cost, or expense that may be imposed upon such other Party solely by virtue of said Section 895.2. The provisions of Section 2778 of the California Civil Code are made a part hereof as if incorporated herein.

Section 11. Termination

- a. This MOU may be terminated in whole or in part, upon the express written agreement to all Parties by giving 30 day written notice. The terminating Party shall be responsible for its Proportional Costs, which the City of Los Angeles incurred or to which it became bound through the effective date of termination. Such MOU Costs shall include the remaining fees of any Consultant retained by the City of Los Angeles prior to the effective date of termination. Should any Party terminate the

MOU, the remaining Parties' Proportional Cost allocation shall be adjusted in accordance with the Cost Share Formula. If this MOU is terminated, all Parties must agree on the equitable redistribution of remaining funds deposited, if there are any, or payment of invoices due at the time of termination. Completed work shall be owned by all Parties. Rights to uncompleted work by the Consultant still under contract will be held by the Party or Parties who fund the completion of such work.

- b. If a Party fails to comply with any of the terms or conditions of this MOU, that Party shall forfeit its rights to the work completed through this MOU.

Section 12. General Provisions

- a) Notices. Any notices, bills, invoices, or reports relating to this MOU, and any request, demand, statement or other communication required or permitted hereunder shall be in writing and shall be delivered to the Representative of the Party at the address set forth in Exhibit B. Parties shall promptly notify each other of any change of contact information, including personnel changes, provided in Exhibit B. Written notice shall include notice delivered via email or fax. A notice shall be deemed to have been received on (a) the date of delivery, if delivered by hand during regular business hours, or by confirmed facsimile or by email; or (b) on the third (3) business day following mailing by registered or certified mail (return receipt requested) to the addresses set forth in Exhibit B.
- b) Administration. For the purpose of this MOU, the Parties hereby designate as their respective Party Representatives the persons named in Exhibit B. The designated Party Representatives, or their respective designees, shall administer the terms and conditions of this MOU on behalf of their respective Party. Each of the persons signing below on behalf of a Party represents and warrants that they are authorized to sign this MOU on behalf of such Party.
- c) Relationship of Parties. The Parties are and shall remain at all times as to each other, wholly independent entities. No Party to this MOU shall have power to incur any debt, obligation, or liability on behalf of another Party unless expressly provided to the contrary by this MOU. No employee, agent, or officer of a Party shall be deemed for any purpose whatsoever to be an agent, employee or officer of another Party.
- d) Binding Effect. This MOU shall be binding upon and inure to the benefit of each Party to this MOU and their respective heirs, administrators, representatives, successors and assigns.
- e) Amendment. The terms and provisions of this MOU may not be amended, modified or waived, except by an instrument in writing signed by all the Parties. This section applies to, but is not limited to, amendments proposed to address regulatory changes in the MS4 permit, modifications to the Scope of Work, or changes in the number of

Parties to this MOU. For the City of Los Angeles, the Director of Bureau of Sanitation or his/her designee is authorized to execute such amendments.

- f) Waiver. Waiver by any Party to this MOU of any term, condition, or covenant of this MOU shall not constitute a waiver of any other term, condition, or covenant. Waiver by any Party to any breach of the provisions of this MOU shall not constitute a waiver of any other provision, nor a waiver of any subsequent breach or violation of any provision of this MOU.
- g) Law to Govern; Venue. This MOU shall be interpreted, construed and governed according to the laws of the State of California. In the event of litigation between the Parties, venue in the state trial courts shall lie exclusively in the County of Los Angeles.
- h) No Presumption in Drafting. The Parties to this MOU agree that the general rule that an MOU is to be interpreted against the Party drafting it, or causing it to be prepared shall not apply.
- i) Entire Agreement. This MOU constitutes the entire agreement of the Parties with respect to the subject matter hereof and supersedes all prior or contemporaneous agreements, whether written or oral, with respect thereto.
- j) Severability. If any term, provision, condition or covenant of this MOU is declared or determined by any court or competent jurisdiction to be invalid, void, or unenforceable, the remaining provisions of this MOU shall not be affected thereby and this MOU shall be read and constructed without the invalid, void, or unenforceable provision(s).
- k) Counterparts. This MOU may be executed in any number of counterparts, each of which shall be an original, but all of which taken together shall constitute but one and the same instrument, provided, however, that such counterparts shall have been delivered to all Parties to this MOU.
- l) All Parties have been represented by counsel in the preparation and negotiation of this MOU. Accordingly, this MOU shall be construed according to its fair language.

IN WITNESS WHEREOF, the Parties hereto have caused this MOU to be executed by their duly authorized representatives and affixed as of the date of signature of the Parties:

THE CITY OF LOS ANGELES

Date: _____

By: _____
Capri W. Maddox, President
Board of Public Works

ATTEST:

By: _____
June Lagmay
City Clerk

APPROVED AS TO FORM:

Carmen Trutanich
City Attorney

By: _____
John A. Carvalho
Deputy City Attorney

THE CITY OF ALHAMBRA

Dated: _____

CITY OF ALHAMBRA

By _____
Steven Placido, Mayor

ATTEST:

Mary Swink, Interim City Manager

APPROVED AS TO FORM:

Joseph Montes, City Attorney

THE CITY OF BURBANK

Dated: _____

CITY OF BURBANK

By _____
Emily Gabel-Luddy, Mayor

ATTEST:

Mark Scott, City Manager

APPROVED AS TO FORM:

Joseph H. McDougall, Senior Assistant City Attorney

THE CITY OF CALABASAS

Dated: _____

CITY OF CALABASAS

By _____
Fred Gaines, Mayor

ATTEST:

Maricela Hernandez, City Clerk

APPROVED AS TO FORM:

Scott Howard, Interim City Attorney

THE CITY OF GLENDALE

Dated: _____

CITY OF GLENDALE

By _____
Dave Weaver, Mayor

ATTEST:

Scott Ochoa, City Manager

APPROVED AS TO FORM:

Michael Garcia, City Attorney

THE CITY OF HIDDEN HILLS

Dated: _____

CITY OF HIDDEN HILLS

By _____
Steve Freedland, Mayor

ATTEST:

Cherie L. Paglia, City Manager

APPROVED AS TO FORM:

Roxanne M. Diaz, City Attorney

THE CITY OF LACANADA FLINTRIDGE

Dated: _____

CITY OF LA CANADA FLINTRIDGE

By _____
Laura Olhasso, Mayor

ATTEST:

Mark R. Alexander, City Manager

APPROVED AS TO FORM:

Mark Sreses, City Attorney

THE CITY OF MONTEBELO

Dated: _____

CITY OF MONTEBELLO

By _____
Christina Cortez, Mayor

ATTEST:

Daniel Hernandez, City Clerk

APPROVED AS TO FORM:

Arnold Alvarez-Glasman, City Attorney

CITY OF MONTEREY PARK

Date: _____

By: _____
Paul Talbot, City Manager

ATTEST:

By: _____
Vincent D. Chang, City Clerk

APPROVED AS TO FORM:

By: _____
Karl H. Berger, Assistant City Attorney

CITY OF PASADENA

Dated: _____

CITY OF PASADENA

By _____
Michael J. Beck, City Manager

ATTEST:

Mark Jomsky, City Clerk

APPROVED AS TO FORM:

Brad L. Fuller, Assistant City Attorney

CITY OF ROSEMEAD

Dated: _____

CITY OF ROSEMEAD

By _____
Jeff Allred, City Manager

ATTEST:

Gloria Molleda, City Clerk

APPROVED AS TO FORM:

Rachel H. Richman, City Attorney

THE CITY OF SAN GABRIEL

Dated: _____

CITY OF SAN GABRIEL

By _____
Steven A. Preston, City Manager

ATTEST:

Nina Castruita, Deputy City Clerk

APPROVED AS TO FORM:

Robert L. Kress, City Attorney

CITY OF SAN MARINO

Dated: _____

CITY OF SAN MARINO

By _____
Richard Ward, Mayor

ATTEST:

John Schaefer, City Manager

APPROVED AS TO FORM:

Steve Dorsey, City Attorney

THE CITY OF SOUTH PASADENA

Dated: _____

CITY OF SOUTH PASADENA

By _____
Sergio Gonzalez, City Manager

ATTEST:

Sally Kilby, City Clerk

APPROVED AS TO FORM:

Richard L. Adams II, City Attorney

CITY OF THE TEMPLE CITY

Date: _____

CITY OF TEMPLE CITY

By _____
Cynthia Sternquist, Mayor

ATTEST:

Peggy Kuo, City Clerk

APPROVED AS TO FORM:

Deputy City Attorney

LOS ANGELES COUNTY FLOOD CONTROL DISTRICT

By _____
Chief Engineer

APPROVED AS TO FORM:

John F. Krattli
County Counsel

By: _____
Deputy

Date

COUNTY OF LOS ANGELES

By: _____
Gail Farber

Date

APPROVED AS TO FORM:

John F. Krattli
County Counsel

By: _____
Deputy

Date

EXHIBIT A

Table 1. Estimated Consultant Contract Cost

Item		Total Cost
Contract Cost	(a)	\$ 1,448,555.00
City of Los Angeles Contract Management Fee (10%)	(a) X 5% = (b)	\$ 144,855.50
SUB-TOTAL COST	(a)+(b)=(c)	\$1,593,410.05
LAFCD Allocation (10%) ¹	(c) x 10% = (d)	\$159,341.00
TOTAL COST TO BE DISTRIBUTED	(c)-(d)=(e)	\$1,434,069.05

Note:

1. The Los Angeles Flood Control District (LAFCD) has committed to contributing 10% of the Total Cost, including contract management fee, as their allocation in the development of the Plans.

EXHIBIT A

Table 2. Distribution of Estimated Total Cost

Agency	Acres ^{1,2}	Percent of Area ³	Distributed Total Cost ⁴
Alhambra	4,884.31	1.60%	\$22,879.05
Burbank	11,095.20	3.62%	\$51,972.05
Calabasas	4,005.68	1.31%	\$18,763.37
Glendale	19,587.50	6.40%	\$91,751.61
Hidden Hills	961.03	0.31%	\$4,501.65
La Canada Flintridge	5,534.46	1.81%	\$25,924.47
Los Angeles	181,288.00	59.22%	\$849,187.78
Los Angeles County	40,553.34	13.25%	\$189,959.63
Montebello	5,356.38	1.75%	\$25,090.31
Monterrey Park	4,951.51	1.62%	\$23,193.82
Pasadena	14,805.30	4.84%	\$69,350.87
Rosemead	3,310.87	1.08%	\$15,508.75
San Gabriel	2,644.87	0.86%	\$12,389.08
San Marino	2,409.64	0.79%	\$11,287.22
South Pasadena	2,186.20	0.71%	\$10,240.58
Temple City	2,576.50	0.84%	\$12,068.82
TOTAL	306,150.79	100.00%	\$1,434,069.05

Note:

1. The areas owned by Caltrans, State Parks, and U.S. Government have been excluded from the total area of the Upper Los Angeles River watershed.
2. Area (acres) determined by GIS analysis as shown in EXHIBIT C
3. Percent Area = Agency Area / Total Area
4. Total Cost = \$1,434,069.05 X Agency Percent of Area

EXHIBIT A

Table 3. Cost Allocation Formula

$$\text{Distributed Total Cost} = \text{Total Cost} \times \text{Agency Percent of Area}$$

EXHIBIT A**Table 4. City of Los Angeles Invoicing Schedule and Invoice Amounts to Parties**

Agency	Invoice Schedule		Distributed Total Cost (a)+(b)=(c)	Contingency (10%) ¹ (c)x0.1=(d)	TOTAL COST INCLUDING CONTINGENCY (c)+(d)=(e)
	Jan. 2014 (a)	Jul. 2014 (b)			
Alhambra	\$11,439.52	\$11,439.52	\$22,879.05	\$2,287.90	\$25,166.95
Burbank	\$25,986.02	\$25,986.02	\$51,972.05	\$5,197.20	\$57,169.25
Calabasas	\$9,381.69	\$9,381.69	\$18,763.37	\$1,876.34	\$20,639.71
Glendale	\$45,875.80	\$45,875.80	\$91,751.61	\$9,175.16	\$100,926.77
Hidden Hills	\$2,250.82	\$2,250.82	\$4,501.65	\$450.16	\$4,951.81
La Canada Flintridge	\$12,962.24	\$12,962.24	\$25,924.47	\$2,592.45	\$28,516.92
Los Angeles	\$424,593.89	\$424,593.89	\$849,187.78	\$84,918.78	\$934,106.56
Los Angeles County	\$94,979.81	\$94,979.81	\$189,959.63	\$18,995.96	\$208,955.59
Montebello	\$12,545.16	\$12,545.16	\$25,090.31	\$2,509.03	\$27,599.34
Monterrey Park	\$11,596.91	\$11,596.91	\$23,193.82	\$2,319.38	\$25,513.21
Pasadena	\$34,675.43	\$34,675.43	\$69,350.87	\$6,935.09	\$76,285.95
Rosemead	\$7,754.38	\$7,754.38	\$15,508.75	\$1,550.88	\$17,059.63
San Gabriel	\$6,194.54	\$6,194.54	\$12,389.08	\$1,238.91	\$13,627.99
San Marino	\$5,643.61	\$5,643.61	\$11,287.22	\$1,128.72	\$12,415.94
South Pasadena	\$5,120.29	\$5,120.29	\$10,240.58	\$1,024.06	\$11,264.64
Temple City	\$6,034.41	\$6,034.41	\$12,068.82	\$1,206.88	\$13,275.70
LACFD	\$79,670.50	\$79,670.50	\$159,341.00	\$15,934.10	\$175,275.10
TOTAL	\$717,034.53	\$717,034.53	\$1,593,410.05	\$143,406.91	\$1,752,751.06

Note:

1. Contingency is 10% of the total invoice amount. Contingency will not be invoiced unless there is a need for its expenditure as agreed by all Parties.

EXHIBIT B

UPPER LOS ANGELES RIVER WATERSHED EWMP/CIMP GROUP Responsible Agencies Representatives

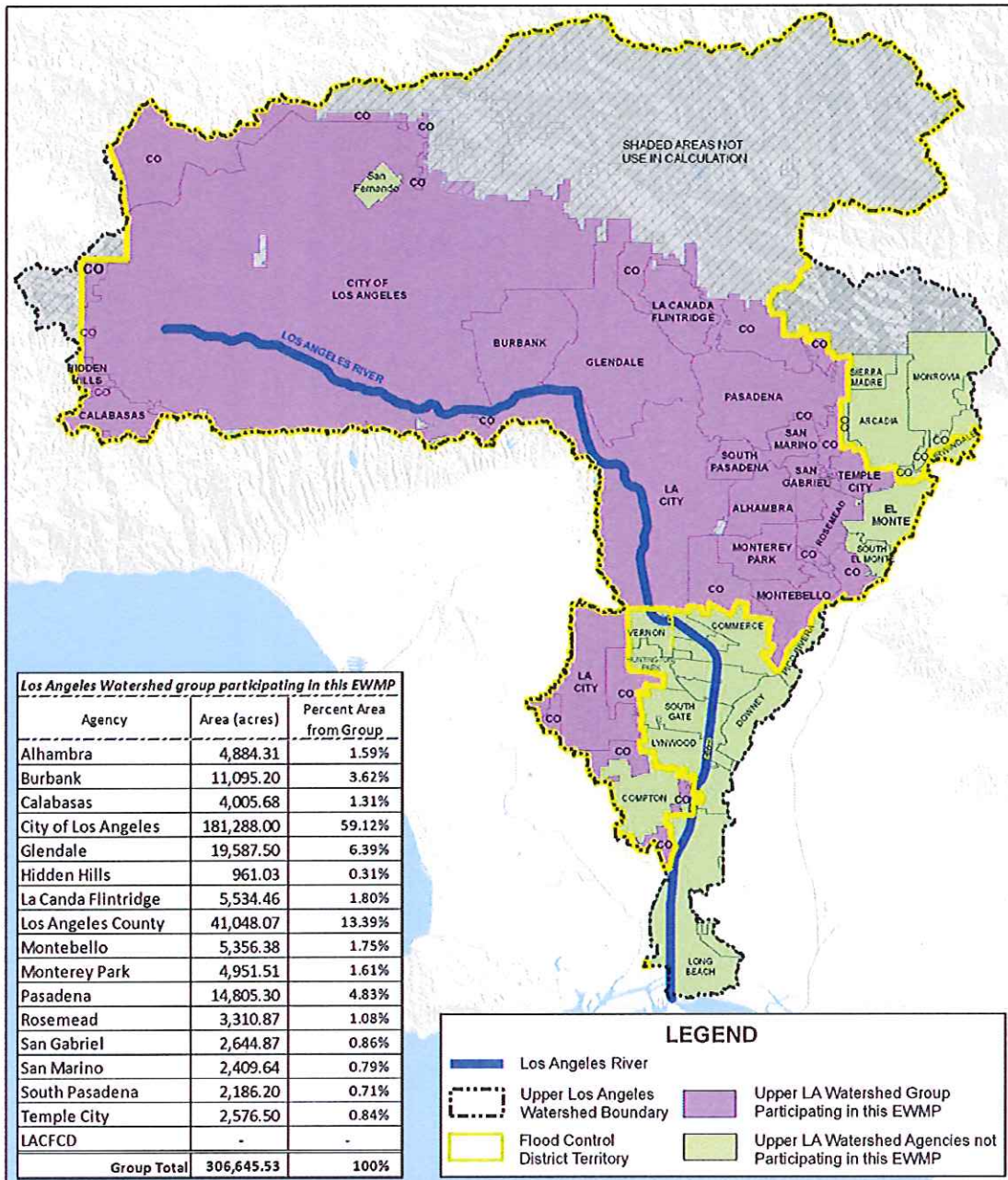
Agency Address	Agency Contact
City of Los Angeles Department of Public Works Bureau of Sanitation, Watershed Protection Division 1149 S. Broadway Los Angeles, CA 90015	Shahram Kharaghani E-mail: Shahram.Kharaghani@Lacity.org Phone: (213) 485-0587 Fax: (213) 485-3939
County of Los Angeles Department of Public Works Watershed Management Division, 11 th Floor 900 South Fremont Avenue Alhambra, CA 91803-1331	Gary Hildebrand E-mail: GHILDEB@dpw.lacounty.gov Phone: (626) 458-4300 Fax: (626) 457-1526
Los Angeles County Flood Control District Department of Public Works Watershed Management Division, 11 th Floor 900 South Fremont Avenue Alhambra, CA 91803-1331	Gary Hildebrand E-mail: GHILDEB@dpw.lacounty.gov Phone: (626) 458-4300 Fax: (626) 457-1526
City of Alhambra 11 South First Street Alhambra, CA 91801-3796	David Dolphin E-mail: DDOLPHIN@cityofalhambra.org Phone: (626) 300-1571 Fax:
City of Burbank P.O. Box 6459 Burbank, CA 91510	Alvin Cruz E-mail: ACruz@burbankca.gov Phone: (818) 238-3941 Fax:
City of Calabasas 100 Civic Center Way Calabasas, CA 91302-3172	Alex Farassati E-mail: afarassati@cityofcalabasas.com Phone: Fax:
City of Glendale Engineering Section, 633 East Broadway, Room 209 Glendale, CA 91206-4308	Maurice Oillataguerre E-mail: moillataguerre@ci.glendale.ca.us Phone: Fax:
City of La Canada Flintridge 1327 Foothill Blvd. La Canada Flintridge, CA 91011-2137	Edward Hitti E-mail: EHitti@lcf.ca.gov Phone: Fax:

EXHIBIT B

UPPER LOS ANGELES RIVER WATERSHED EWMP/CIMP GROUP Responsible Agencies Representatives

<p>City of Montebello 1600 W Beverly Blvd Montebello, CA 90640</p>	<p>Norma Salinas Nsalinas@cityofmontebello.com Phone: 323-887-1365 Fax: 323- 887-1410</p>
<p>City of Monterey Park 320 West Newmark Avenue Monterrey Park, CA 91754-2896</p>	<p>Amy Ho E-mail: amho@monterreypark.ca.gov</p> <p>Mikki Klee E-mail: mkleee@jlha.net Phone: (562) 802-7880 Fax: (562) 802-2297</p>
<p>City of Pasadena P.O. Box 7115 Pasadena, CA 91109-7215</p>	<p>Stephen Walker E-mail: SWalker@cityofpasadena.net Phone: (626) 744-4271 Fax:</p>
<p>City of Rosemead, 8838 East Valley Blvd. Rosemead, CA 91770-1787</p>	<p>Eiroy Kiepke E-mail: Ekiepke@wilidan.com Phone: Fax:</p>
<p>City of San Gabriel 425 South Mission Avenue San Gabriel, CA 91775</p>	<p>Daren Grilley E-mail: dgrilley@sgch.org Phone: Fax:</p>
<p>City of San Marino 2200 Huntington Drive San Marino, CA 91108-2691</p>	<p>Kevin Sales E-mail: kjserv@aol.com Phone: Fax:</p>
<p>City of South Pasadena 1414 Mission Street South Pasadena, CA 91020-3298</p>	<p>Shin Furukawa E-mail: SFurukawa@ci.south-pasadena.ca.us Phone: (626) 403-7246 Fax:</p>
<p>City of Temple City 9701 Las Tunas Drive Temple City, CA 9178</p>	<p>Mark Persico E-mail: mpersico@templecity.us</p> <p>Mikki Klee E-mail: mkleee@jlha.net Phone: (562) 802-7880 Fax: (562) 802-2297</p>

EXHIBIT C
UPPER LOS ANGELES RIVER WATERSHED
EWMP/CIMP GROUP



Upper Los Angeles River Watershed
EWMP Agencies

BUREAU OF SANITATION

	ENRIQUE C. ZALDIVAR DIRECTOR	SHAHRAJ KHARAGHANII PROGRAM MANAGER	
	ULARW_EWMPAgencies	DRAWN BY IHI	CHECKED BY
		DATE 6/18/2013	This map shall not be copied or reproduced all or any part thereof, whether for distribution or resale without the proper written permission of the Dept of Public Works, City of Los Angeles Thomas Ellis Data reproduce with permission granted by THOMAS ELLIS MAP
		DATE REVISED	

WATERSHED PROTECTION SYSTEMS

Attachment 3 - Signed Letters of Intent

BOARD OF
PUBLIC WORKS

COMMISSIONERS

CAPRI W. MADDOX
PRESIDENT

VALERIE LYNNE SHAW
VICE PRESIDENT

STEVEN T. NUTTER
PRESIDENT PRO TEMPORE

WARREN T. FURUTANI
COMMISSIONER

JERILYN LÓPEZ-MENDOZA
COMMISSIONER

CITY OF LOS ANGELES
CALIFORNIA



ANTONIO R. VILLARAIGOSA
MAYOR

BUREAU OF SANITATION

ENRIQUE C. ZALDIVAR
DIRECTOR

TRACI J. MINAMIDE
CHIEF OPERATING OFFICER

VAROUJ S. ABKIAN
ADEL H. HAGEKHALIL
ALEXANDER E. HELOU
ASSISTANT DIRECTORS

NEIL M. GUGLIELMO
ACTING CHIEF FINANCIAL OFFICER

WATERSHED PROTECTION DIVISION
1149 SOUTH BROADWAY, 10TH FLOOR
LOS ANGELES, CA 90015
TEL: (213) 485-0587
FAX: (213) 485-3939

June 20, 2013

Samuel Unger, Executive Officer
Los Angeles Regional Water Quality Control Board
320 West Fourth Street, Suite 200
Los Angeles, California 90013

Attention: Renee Purdy

Dear Mr. Unger:

CITY OF LOS ANGELES COMMITMENT TO PARTICIPATE IN AND SHARE THE COST FOR THE DEVELOPMENT OF ENHANCED WATERSHED MANAGEMENT PROGRAM AND COORDINATED INTEGRATED MONITORING PROGRAM FOR THE UPPER LOS ANGELES RIVER WATERSHED GROUP

The City of Los Angeles submits this letter of intent with our commitment to participate in and share the cost for the development of an Enhanced Watershed Management Program (EWMP) and Coordinated Integrated Monitoring Program (CIMP) for the Upper Los Angeles River Watershed as outlined in the Notice of Intent submitted by the City of Los Angeles to meet the requirements of Part VI.C.4.b of the MS4 Permit (Order No. R4-2012-0175) and the CIMP notification requirements specified in Attachment E Section IV.C.1.

The Upper Los Angeles River Watershed Group consists of the following MS4 Permittees: The City of Los Angeles, the City of Alhambra, the City of Burbank, the City of Calabasas, the City of El Monte, the City of Glendale, the City of Hidden Hills, the City of La Canada Flintridge, the City of Montebello, the City of Monterey Park, the City of Pasadena, the City of Rosemead, the City of San Gabriel, the City of South Pasadena, the City of San Marino, the City of Temple City, the County of Los Angeles and the Los Angeles County Flood Control District. The final draft agreement to fund program development by the Upper Los Angeles River Watershed Group has been included in the Notice of Intent and the City of Los Angeles is committed to execute this agreement prior to December 28, 2013.

Should you have any questions about this submittal, please contact me at Shahram.Kharaghani@lacity.org or at phone number (213) 485-0587 or Alfredo Magallanes, of my staff, at Alfredo.Magallanes@lacity.org or at phone number (213) 485-3958.

Sincerely,

SHAHRAM KHARAGHANI, Ph.D., PE, BCEE
Program Manager

SK:AM:VD
WPDCR 9040

AN EQUAL EMPLOYMENT OPPORTUNITY - AFFIRMATIVE ACTION EMPLOYER

Samuel Unger, Executive Officer
City of Los Angeles Letter of Intent for Los Angeles River Watershed
June 20, 2013
Page 2

cc: Renee Purdy, California Regional Water Quality Control Board, Los Angeles Region
Ivar Ridgeway, California Regional Water Quality Control Board, Los Angeles Region
Enrique Zaldivar, City of Los Angeles, BOS
Adel Hagekhalil, City of Los Angeles, BOS
Gary Hildebrand, County of Los Angeles, Department of Public Works
Alvin Cruz, City of Burbank
Alex Farassati, City of Calabasas
Amy Ho, City of Monterey Park
Armond Ghazarian, County of Los Angeles
David Dolphin, City of Alhambra
Daren Grilley, City of San Gabriel
Edward Hitti, City of La Canada Flintridge
Elaine Unitake, County of Los Angeles,
Elroy Kiepke, Willdan Engineering
John Hunter, John L. Hunter and Associates
Joe Bellomo, City of Hidden Hills,
Jolene Gurerro, County of Los Angeles
Kevin Sales, City of San Marino
Luis Perez, County of Los Angeles
Mark Perisco, City of Temple City
Maurice Oillataguerre, City of Glendale,
Michelle Marquez-Riley, City of El Monte
Mikki Klee, John Hunter and Associates
Norma Salinas, City of Montebello
Sean Sullivan, City of Rosemead
Shiela Kennedy, Enfact Solutions
Shin Furukawa, City of South Pasadena
Steve Walker, City of Pasadena
Tona Avalos, County of Los Angeles
Ying Kwan, City of La Canada Flintridge



GAIL FARBER, Director

COUNTY OF LOS ANGELES

DEPARTMENT OF PUBLIC WORKS

"To Enrich Lives Through Effective and Caring Service"

900 SOUTH FREMONT AVENUE
ALHAMBRA, CALIFORNIA 91803-1331
Telephone: (626) 458-5100
<http://dpw.lacounty.gov>

ADDRESS ALL CORRESPONDENCE TO:
P.O. BOX 1460
ALHAMBRA, CALIFORNIA 91802-1460

IN REPLY PLEASE
REFER TO FILE: WM-7

June 24, 2013

Mr. Samuel Unger, P.E.
Executive Officer
California Regional Water Quality
Control Board – Los Angeles Region
320 West 4th Street, Suite 200
Los Angeles, CA 90013

Attention Ms. Renee Purdy

Dear Mr. Unger:

**LETTER OF INTENT – COUNTY OF LOS ANGELES
UPPER LOS ANGELES RIVER WATERSHED
ENHANCED WATERSHED MANAGEMENT PROGRAM
AND COORDINATED INTEGRATED MONITORING PROGRAM**


The County of Los Angeles (County) submits this Letter of Intent to participate in and share the cost of the development of an Enhanced Watershed Management Program (EWMP) and a Coordinated Integrated Monitoring Program (CIMP) with the Upper Los Angeles River Watershed Group. This Letter of Intent serves to satisfy the EWMP notification requirements of Section VI.C.4.b.iii(3) of Order No. R4-2012-0175 (Municipal Separate Storm Sewer System Permit) and the CIMP requirements of Section IV.C.1 of Attachment E of the Municipal Separate Storm Sewer System Permit.

The Upper Los Angeles River Watershed Group consists of the following agencies: City of Los Angeles as the coordinating agency for EWMP and CIMP development, County, Los Angeles County Flood Control District, and cities of Alhambra, Burbank, Calabasas, Glendale, Hidden Hills, La Canada Flintridge, Montebello, Monterey Park, Pasadena, Rosemead, San Gabriel, San Marino, South Pasadena, and Temple City. The Upper Los Angeles River Group has included a final draft Memorandum of Understanding as Attachment 2 of the Notice of Intent. The County intends to submit a final Memorandum of Understanding to its Board of Supervisors for approval prior to December 28, 2013.

Mr. Samuel Unger
June 24, 2013
Page 2

If you have any questions, please contact Ms. Angela George at (626) 458-4325 or
ageorge@dpw.lacounty.gov.

Very truly yours,


For GAIL FARBER
Director of Public Works

TA:jht

P:\wmpub\Secretarial\2013 Documents\Letter\LOI Upper LAR County.doc\13231

cc: City of Alhambra
City of Burbank
City of Calabasas
City of Glendale
City of Hidden Hills
City of La Canada Flintridge
City of Los Angeles
City of Montebello
City of Monterey Park
City of Pasadena
City of Rosemead
City of San Gabriel
City of San Marino
City of South Pasadena
City of Temple City



GAIL FARBBER, Director

COUNTY OF LOS ANGELES

DEPARTMENT OF PUBLIC WORKS

"To Enrich Lives Through Effective and Caring Service"

900 SOUTH FREMONT AVENUE
ALHAMBRA, CALIFORNIA 91803-1331
Telephone: (626) 458-5100
<http://dpw.lacounty.gov>

ADDRESS ALL CORRESPONDENCE TO:
P.O. BOX 1460
ALHAMBRA, CALIFORNIA 91802-1460

June 24, 2013

IN REPLY PLEASE
REFER TO FILE: WM-7

Mr. Samuel Unger, P.E.
Executive Officer
California Regional Water Quality
Control Board – Los Angeles Region
320 West 4th Street, Suite 200
Los Angeles, CA 90013

Attention Ms. Renee Purdy

Dear Mr. Unger:

**LETTER OF INTENT – LOS ANGELES COUNTY FLOOD CONTROL DISTRICT
UPPER LOS ANGELES RIVER WATERSHED
ENHANCED WATERSHED MANAGEMENT PROGRAM
AND COORDINATED INTEGRATED MONITORING PROGRAM**

The Los Angeles County Flood Control District (LACFCD) submits this Letter of Intent to participate in and share the cost of the development of an Enhanced Watershed Management Program (EWMP) and a Coordinated Integrated Monitoring Program (CIMP) with the Upper Los Angeles River Watershed Group. This Letter of Intent serves to satisfy the EWMP notification requirements of Section VI.C.4.b.iii(3) of Order No. R4-2012-0175 (Municipal Separate Storm Sewer System Permit) and the CIMP requirements of Section IV.C.1 of Attachment E of the Municipal Separate Storm Sewer System Permit.

The Upper Los Angeles River Watershed Group consists of the following agencies: City of Los Angeles as the coordinating agency for EWMP and CIMP development, LACFCD, County of Los Angeles, and cities of Alhambra, Burbank, Calabasas, Glendale, Hidden Hills, La Canada Flintridge, Montebello, Monterey Park, Pasadena, Rosemead, San Gabriel, San Marino, South Pasadena, and Temple City. The Upper Los Angeles River Watershed Group has included a final draft Memorandum of Understanding as Attachment 2 of the Notice of Intent. The LACFCD intends to submit a final Memorandum of Understanding to the County of Los Angeles Board of Supervisors (which is the LACFCD's governing body) for approval prior to December 28, 2013.

Mr. Samuel Unger
June 24, 2013
Page 2

If you have any questions, please contact Ms. Terri Grant at (626) 458-4309 or tgrant@dpw.lacounty.gov.

Very truly yours,



for GAIL FARBER

Chief Engineer of the Los Angeles County Flood Control District

TA:jht

P:\wmpubl\Secretarial\2013 Documents\Letter\LOI Upper LAR LACFCD.doc\C813232

cc: City of Alhambra
City of Burbank
City of Calabasas
City of Glendale
City of Hidden Hills
City of La Canada Flintridge
City of Los Angeles
City of Montebello
City of Monterey Park
City of Pasadena
City of Rosemead
City of San Gabriel
City of San Marino
City of South Pasadena
City of Temple City

City of Alhambra

Office of the City Manager

June 10, 2013



*Gateway
to the
San Gabriel Valley*

*111
South First Street
Alhambra
California
91801*

*626
570-5010*

*FAX
281-2248*

Mr. Samuel Unger, Executive Officer
Los Angeles Regional Water Quality Control Board
320 West Fourth Street, Suite 200
Los Angeles, California 90013

Attention: Renee Purdy

LETTER OF INTENT PLEDGING COMMITMENT IN THE DEVELOPMENT OF AN ENHANCED WATERSHED MANAGEMENT PROGRAM AND COORDINATED INTEGRATED MONITORING PROGRAM IN COLLABORATION WITH THE UPPER LOS ANGELES RIVER WATERSHED GROUP

Dear Mr. Unger;

The City of Alhambra, with this letter, pledges to collaborate with the Upper Los Angeles River Watershed Group (Group) in the development of an Enhanced Watershed Management Program (EWMP) and Coordinated Integrated Monitoring Program (CIMP) in accordance with the new MS4 Permit by Order No. R4-2012-0175 for submission to your Board. The Upper Los Angeles Watershed Group includes only the following agencies: The City of Los Angeles, the City of Alhambra, the City of Burbank, the City of Calabasas, the City of Glendale, the City of Hidden Hills, the City of La Canada Flintridge, the City of Monterey Park, the City of Pasadena, the City of Rosemead, the City of San Gabriel, the City of South Pasadena, the City of San Marino, the City of Temple City, the County of Los Angeles and the Los Angeles County Flood Control District.

The City of Alhambra further pledges to share the development cost of both the Enhanced Watershed Management Program (EWMP) and Coordinated Integrated Monitoring Program (CIMP). A cost sharing formula has been agreed upon by all participating members of the Group as to the equitable distribution of costs.

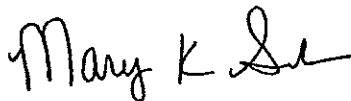


June 10, 2013

Page Two

Should you have any questions, please contact my staff, Mary Chavez, Director of Public Works at mchavez@cityofalhambra.org or at (626) 570-5067 or David Dolphin, Environmental Compliance Specialist at ddolphin@cityofalhambra.org or at (626) 300-1571.

Sincerely,

A handwritten signature in black ink that reads "Mary K Swink". The signature is written in a cursive style with a large initial "M" and a stylized "S".

Mary K. Swink
Interim City Manager

cc:

Renee Purdy, California Regional Water Quality Control Board, Los Angeles
Region

Ivar Ridgeway, California Regional Water Quality Control Board, Los Angeles
Region

Mary Chavez, Director of Public Works



City of Burbank
PUBLIC WORKS DEPARTMENT
275 East Olive Avenue, Burbank CA 91510-6459
Tel: (818) 238-3950 Fax (818) 238-3999
www.ci.burbank.ca.us

June 11, 2013

Mr. Samuel Unger, P.E.
Executive Officer
Los Angeles Regional Water Quality Control Board
320 West Fourth Street, Suite 200
Los Angeles, California 90013

**LETTER OF INTENT TO COMMIT TO THE DEVELOPMENT OF AN
ENHANCED WATERSHED MANAGEMENT PROGRAM AND COORDINATED
INTEGRATED MONITORING PROGRAM IN COLLABORATION WITH THE
UPPER LOS ANGELES RIVER WATERSHED GROUP**

Dear Mr. Unger:

This letter represents the City of Burbank's intent to collaborate with the Upper Los Angeles River Watershed Group (Group) in the development of an Enhanced Watershed Management Program (EWMP) and Coordinated Integrated Monitoring Program (CIMP) in accordance with the new Municipal Separate Storm Sewer System (MS4) Permit by Order No. R4-2012-0175 for submission to your Board.

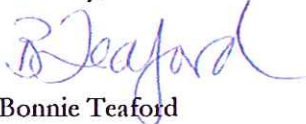
The Group includes the following agencies:

- City of Los Angeles
- County of Los Angeles
- Los Angeles County Flood Control District
- City of Alhambra
- City of Burbank
- City of Calabasas
- City of El Monte
- City of Glendale
- City of Hidden Hills
- City of La Canada Flintridge
- City of Montebello
- City of Monterey Park
- City of Pasadena
- City of Rosemead
- City of San Gabriel
- City of San Marino
- City of South Pasadena
- City of Temple City

The City of Burbank further intends to share the development cost of both the EWMP and CIMP. A cost sharing formula has been agreed to by all participating members of the Group as to the equitable distribution of costs, which will be reflected in the Memorandum of Agreement to be signed by all participating entities.

Should you have any questions, please contact Daniel Rynn, Assistant Public Works Director, at (818) 238-3940 or drynn@burbankca.gov.

Sincerely,



Bonnie Teaford
City of Burbank
Public Works Director

cc:

Renee Purdy, California Regional Water Quality Control Board, Los Angeles Region
Ivar Ridgeway, California Regional Water Quality Control Board, Los Angeles Region



CITY of CALABASAS

June 10, 2013

Samuel Unger, Executive Officer
Los Angeles Regional Water Quality Control Board
320 West Fourth Street, Suite 200
Los Angeles, California 90013

SUBJECT: LETTER OF INTENT PLEDGING COMMITMENT IN THE DEVELOPMENT OF AN ENHANCED WATERSHED MANAGEMENT PROGRAM AND COORDINATED INTEGRATED MONITORING PROGRAM IN COLLABORATION WITH THE UPPER LOS ANGELES RIVER WATERSHED GROUP

Dear Mr. Unger:

The City of Calabasas, with this letter, pledges to collaborate with the Upper Los Angeles River Watershed Group (Group) in the development of an Enhanced Watershed Management Program (EWMP) and Coordinated Integrated Monitoring Program (CIMP) in accordance with the new MS4 Permit by Order No. R4-2012-0175 for submission to your Board.

The Upper Los Angeles Watershed Group includes only the following agencies: The City of Los Angeles, the City of Alhambra, the City of Burbank, the City of Calabasas, the City of Glendale, the City of Hidden Hills, the City of La Canada Flintridge, the City of Monterey Park, the City of Pasadena, the City of Rosemead, the City of San Gabriel, the City of South Pasadena, the City of San Marino, the County of Los Angeles and the Los Angeles County Flood Control District.

The City of Calabasas further pledges to share the development cost of both the Enhanced Watershed Management Program (EWMP) and Coordinated Integrated Monitoring Program (CIMP). A cost sharing formula has been agreed by all participating members of the Group as to the equitable distribution of costs.

100 Civic Center Way
Calabasas, CA 91302
(818) 224-1600
Fax (818) 225-7324



June 10, 2013

Samuel Unger, Executive Officer

Page 2

Should you have any questions, please contact Dr. Alex Farassati, Environmental Services Supervisor, at (818) 224-1680 or via e-mail at afarassati@cityofcalabasas.com.

Sincerely,



Anthony M. Coroallés
City Manager

c: City Council

Robert Yalda, Calabasas Public Works Director/City Engineer

Alex Farassati, Calabasas Environmental Services Supervisor

Renee Purdy, California Regional Water Quality Control Board, Los Angeles Region

Ivar Ridgeway, California Regional Water Quality Control Board, Los Angeles Region



CITY OF GLENDALE, CALIFORNIA
Public Works Department

633 East Broadway, Room 209
Glendale, California 91206-4385
(818) 548-3900 Fax (818) 546-2207
www.ci.glendale.ca.us

May 7, 2013

Samuel Unger, Executive Officer
Los Angeles Regional Water Quality Control Board
320 West Fourth Street, Suite 200
Los Angeles, California 90013

RECEIVED

MAY 22 2013

WATERSHED PROTECTION DIVISION

Attention: Renee Purdy

**LETTER OF INTENT PLEDGING COMMITMENT IN THE DEVELOPMENT OF
AN ENHANCED WATERSHED MANAGEMENT PROGRAM AND COORDINATED
INTEGRATED MONITORING PROGRAM IN COLLABORATION WITH THE
UPPER LOS ANGELES RIVER WATERSHED GROUP**

Dear Mr. Unger:

The City of Glendale, with this letter, pledges to collaborate with the Upper Los Angeles River Watershed Group (Group) in the development of an Enhanced Watershed Management Program (EWMP) and Coordinated Integrated Monitoring Program (CIMP) in accordance with the new MS4 Permit by Order No. R4-2012-0175 for submission to your Board.


The Group includes only the following agencies: The City of Los Angeles, the city of Alhambra, the city of Burbank, the city of Calabasas, the city of Glendale, the city of Hidden Hills, the city of La Canada Flintridge, the city of Monterey Park, the city of Pasadena, the city of Rosemead, the city of San Gabriel, the city of South Pasadena, the city of San Marino, the County of Los Angeles and the Los Angeles County Flood Control District. The City of Los Angeles, as lead agency for the Group, is preparing the comprehensive Notice of Intent on behalf of the Group.

The City of Glendale further pledges to cost share the development cost of both the EWMP and CIMP. A cost sharing formula has been agreed by all participating members of the Group as to the equitable distribution of costs, which will be reflected in the Memorandum of Agreement to be signed by all participating entities.

Should you have any questions, please contact Maurice Oillataguerre, Senior Environmental Program Specialist, at (818) 937-8219 or moillataguerre@ci.glendale.ca.us.



Sincerely,



Stephen M. Zarr
City of Glendale
Public Works Director

cc:

Renee Purdy, California Regional Water Quality Control Board, Los Angeles Region
Ivar Ridgeway, California Regional Water Quality Control Board, Los Angeles Region



City of Hidden Hills

6165 Spring Valley Road • Hidden Hills, California 91302
(818) 888-9281 • Fax (818) 719-0083

June 11, 2013

Samuel Unger, Executive Officer
Los Angeles Regional Water Quality Control Board
320 West Fourth Street, Suite 200
Los Angeles, California 90013

**RE: LETTER OF INTENT PLEDGING COMMITMENT IN THE
DEVELOPMENT OF AN ENHANCED WATERSHED
MANAGEMENT PROGRAM AND COORDINATED INTEGRATED
MONITORING PROGRAM IN COLLABORATION WITH THE
UPPER LOS ANGELES RIVER WATERSHED GROUP**

Dear Mr. Unger:

The City of Hidden Hills, with this letter, pledges to collaborate with the Upper Los Angeles River Watershed Group (Group) in the development of an Enhanced Watershed Management Program (EWMP) and Coordinated Integrated Monitoring Program (CIMP) in accordance with the new MS4 Permit by Order No. R4-2012-0175 for submission to your Board. The Group includes the following agencies: the City of Los Angeles, the City of Alhambra, the City of Burbank, the City of Calabasas, the City of Glendale, the City of Hidden Hills, the City of La Canada Flintridge, the City of Montebello, the City of Monterey Park, the City of Pasadena, the City of Rosemead, the City of San Gabriel, the City of South Pasadena, the City of San Marino, the City of Temple City, Los Angeles County, and the Los Angeles County Flood Control District.

The City of Hidden Hills further pledges to cost share the development cost of both the EWMP and CIMP. A cost sharing formula has been agreed to by all participating members of the Group as to the equitable distribution of costs.

Samuel Unger
Los Angeles Regional Water Quality Control Board
June 11, 2013
Page 2

Should you have any questions, please contact our Water Quality Consultant, Joe Bellomo, at jbello@willdan.com or at (805) 279-6856.

Sincerely,

CITY OF HIDDEN HILLS



Steve Freedland
Mayor

SF/dlg

cc: Cherie L. Paglia, City Manager
Joe Bellomo, Willdan Engineering
Renee Purdy, California Regional Water Quality Control Board, Los Angeles Region
Ivar Ridgeway, California Regional Water Quality Control Board, Los Angeles Region
Shahram Kharaghani, City of Los Angeles, Bureau of Sanitation
Alfredo Magallanes, City of Los Angeles, Bureau of Sanitation



June 26, 2013

City Council
Laura Olhasso, Mayor
Michael T. Davitt, Mayor Pro Tem
Jonathan C. Curtis
David A. Spence
Donald R. Voss

Samuel Unger, Executive Officer
Los Angeles Regional Water Quality Control Board
320 West Fourth Street, Suite 200
Los Angeles, California 90013

Attention: Renee Purdy

CITY OF LA CAÑADA FLINTRIDGE COMMITMENT TO PARTICIPATE IN AND SHARE THE COST FOR THE DEVELOPMENT OF ENHANCED WATERSHED MANAGEMENT PROGRAM AND COORDINATED INTEGRATED MONITORING PROGRAM FOR THE UPPER LOS ANGELES RIVER WATERSHED GROUP

Dear Mr. Unger;

The City of La Cañada Flintridge submits this letter of intent with our commitment to participate in and share the cost for the development of an Enhanced Watershed Management Program (EWMP) and Coordinated Integrated Monitoring Program (CIMP) for the Upper Los Angeles River Watershed as outlined in the Notice of Intent submitted by the City of Los Angeles to meet the requirements of Part VI.C.4.b of the MS4 Permit (Order No. R4-2012-0175) and the CIMP notification requirements specified in Attachment E Section IV.C.1.

The Upper Los Angeles River Watershed Group consists of the following MS4 Permittees: The City of Los Angeles, the City of Alhambra, the City of Burbank, the City of Calabasas, the City of Glendale, the City of Hidden Hills, the City of La Cañada Flintridge, the City of Montebello, the City of Monterey Park, the City of Pasadena, the City of Rosemead, the City of San Gabriel, the City of South Pasadena, the City of San Marino, the City of Temple City, the County of Los Angeles and the Los Angeles County Flood Control District. The final draft agreement to fund program development by the Upper Los Angeles River Watershed Group has been included in the Notice of Intent and the City of Los Angeles is committed to execute this agreement prior to December 28, 2013.

The City of La Cañada Flintridge further pledges to share the cost of both EWMP and CIMP. A cost sharing formula has been agreed upon by all parties on an equitable basis by participating members which will be reflected in the Memorandum of Understanding to be signed by all participating members.

Should you have any questions about this submittal, please contact Edward Hitti, P.E., Public Works Director, at (818) 790-8882 or email him at ehitti@lcf.ca.gov.

Sincerely,

A handwritten signature in blue ink that reads "Mark R. Alexander". The signature is fluid and cursive.

Mark R. Alexander
City Manager



City of Montebello

May 28, 2013

Samuel Unger, Executive Officer
Los Angeles Regional Water Quality Control Board
320 West Fourth Street, Suite 200
Los Angeles, CA 90013

Attention: Renee Purdy

LETTER OF INTENT PLEDGING COMMITMENT IN THE DEVELOPMENT OF AN ENHANCED WATERSHED MANAGEMENT PROGRAM AND COORDINATED INTEGRATED MONITORING PROGRAM IN COLLABORATION WITH THE UPPER LOS ANGELES RIVER WATERSHED GROUP

Dear Mr. Unger:

The City of Montebello, with this letter, agrees to collaborate with the Upper Los Angeles River Watershed Group (Group) in the development of an Enhanced Watershed Management Program (EWMP) and Coordinated Integrated Monitoring Program (CIMP) in accordance with the new MS4 Permit by Order No. R4-2012-0175 for submission to your Board. The Upper Los Angeles Watershed Group included only the following agencies: The City of Los Angeles, the City of Alhambra, the City of Burbank, the City of Calabasas, The City of Glendale, the City of Hidden Hills, the City of La Canada Flintridge, the City of Monterey Park, the City of Pasadena, the City of Rosemead, the City of San Gabriel, the City of South Pasadena, the City of San Marino, the County of Los Angeles, and the Los Angeles County Flood Control District.

The City of Montebello further agrees to cost share the development cost of both the Enhanced Watershed Management Program (EWMP) and Coordinated Integrated Monitoring Program (CIMP). A cost sharing formula has been agreed by all participating members of the Group as to the equitable distribution of costs which will be binding once Montebello City Council approves the final Memorandum of Understanding.

Should you have any questions, please contact Norma Salinas at (323) 887-1365 or email her at nsalinas@cityofmontebello.com.

Sincerely,


Francesca Tucker-Schuyler
City Administrator

NFS/lg

CITY OF MONTEREY PARK

320 West Newmark Avenue • Monterey Park • California 91754-2896
www.ci.monterey-park.ca.us



City Council
Peter Chan
Mitchell Ing
Hans Liang
Teresa Real Sebastian
Anthony Wong

City Clerk
Vincent D. Chang

City Treasurer
Joseph Leon

June 5, 2013

Samuel Unger, Executive Officer
Los Angeles Regional Water Quality Control Board
320 West Fourth Street, Suite 200
Los Angeles, California 90013

Attention: Renee Purdy

**LETTER OF INTENT PLEDGING COMMITMENT IN THE DEVELOPMENT OF AN
ENHANCED WATERSHED MANAGEMENT PROGRAM AND COORDINATED
INTEGRATED MONITORING PROGRAM IN COLLABORATION WITH THE UPPER
LOS ANGELES RIVER WATERSHED GROUP**

Dear Mr. Unger;

The City of Monterey Park, with this letter, pledges to cooperate with the Upper Los Angeles River Watershed Group (Group) in developing an Enhanced Watershed Management Program (EWMP) and Coordinated Integrated Monitoring Program (CIMP) in accordance with the new MS4 Permit by Order No. R4-2012-0175 for submission to your Board. The Upper Los Angeles Watershed Group includes only the following agencies: The city of Los Angeles; the city of Alhambra; the city of Burbank; the city of Calabasas; the city of Glendale; the city of Hidden Hills; the city of La Canada Flintridge; the city of Monterey Park; the city of Pasadena; the city of Rosemead; the city of San Gabriel; the city of South Pasadena; the city of San Marino; the city of Temple City; the County of Los Angeles and the Los Angeles County Flood Control District.

The City of Monterey Park further agrees to cost share the development cost of both the Enhanced Watershed Management Program (EWMP) and Coordinated Integrated Monitoring Program (CIMP). A cost sharing formula has been agreed by all participating members of the Group as to the equitable distribution of costs.

Should you have any questions, please contact my staff, Amy Ho, at (626) 307-1383.

Sincerely,

A handwritten signature in black ink, appearing to read "Paul L. Talbot", is written over a circular stamp. The signature is fluid and cursive.

Paul L. Talbot
City Manager



DEPARTMENT OF PUBLIC WORKS

June 12, 2013

Samuel Unger, Executive Officer
Los Angeles Regional Water Quality Control Board
320 West Fourth Street, Suite 200
Los Angeles, California 90013

Attention: Renee Purdy

**LETTER OF INTENT PLEDGING COMMITMENT IN THE DEVELOPMENT OF AN
ENHANCED WATERSHED MANAGEMENT PROGRAM AND COORDINATED
INTEGRATED MONITORING PROGRAM IN COLLABORATION WITH THE
UPPER LOS ANGELES RIVER WATERSHED GROUP**

Dear Mr. Unger:

The City of Pasadena, with this letter, pledges to collaborate with the Upper Los Angeles River Watershed Group (Group) in the development of an Enhanced Watershed Management Program (EWMP) and Coordinated Integrated Monitoring Program (CIMP) in accordance with the new MS4 Permit by Order No. R4-2012-0175 for submission to your Board.

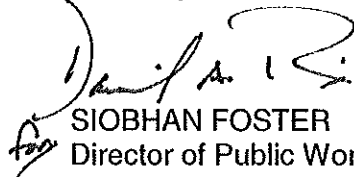
The Group includes only the following agencies: the Cities of Los Angeles, Alhambra, Burbank, Calabasas, Glendale, Hidden Hills, La Canada Flintridge, Monterey Park, Pasadena, Rosemead, San Gabriel, San Marino, South Pasadena, the County of Los Angeles, and the Los Angeles County Flood Control District. The City of Los Angeles, as lead agency for the Group, is preparing the comprehensive Notice of Intent on behalf of the Group.

The City of Pasadena further pledges to share the development cost of both the EWMP and CIMP. A cost sharing formula has been agreed to by all participating members of the Group as to the equitable distribution of costs, which will be reflected in the Memorandum of Agreement to be signed by all participating entities.

Samuel Unger
June 12, 2013
Page 2 of 2

If you have any questions, please contact Dan Rix, City Engineer, at drix@cityofpasadena.net or 626-744-4267, or Steve Walker, Principal Engineer, at swalker@cityofpasadena.net or 626-744-4271.

Sincerely,



SIOBHAN FOSTER
Director of Public Works

cc:

Renee Purdy, California Regional Water Quality Control Board, Los Angeles Region
Ivar Ridgeway, California Regional Water Quality Control Board, Los Angeles Region

MAYOR:
POLLY LOW

MAYOR PRO TEM:
WILLIAM ALARCON

COUNCIL MEMBERS:
SANDRA ARMENTA
MARGARET CLARK
STEVEN LY



City of Rosemead

8838 E. VALLEY BOULEVARD P.O BOX 399
ROSEMEAD, CALIFORNIA 91770
TELEPHONE (626) 569-2100
FAX (626) 307-9218

June 13, 2013

Samuel Unger, Executive Officer
Los Angeles Regional Water Quality Control Board
320 West Fourth Street, Suite 200
Los Angeles, California 90013

**LETTER OF INTENT TO PARTICIPATE IN THE DEVELOPMENT OF AN
ENHANCED WATERSHED MANAGEMENT PROGRAM AND COORDINATED
INTEGRATED MONITORING PROGRAM AS A MEMBER OF THE UPPER
LOS ANGELES RIVER WATERSHED GROUP**

Dear Mr. Unger;

The City of Rosemead hereby submits its intention to collaborate with the Upper Los Angeles River Watershed Group (Group) in the development of an Enhanced Watershed Management Program (EWMP) and Coordinated Integrated Monitoring Program (CIMP). The development of these programs is authorized by Order No. R4-2012-0175, the MS4 permit for Los Angeles County, which became effective on December 28, 2012.

The Upper Los Angeles Watershed Group includes only the following agencies: The City of Rosemead, the City of Alhambra, the City of Burbank, the City of Calabasas, the City of El Monte, the City of Glendale, the City of Hidden Hills, the City of La Canada Flintridge, the City of Los Angeles, the City of Monterey Park, the City of Pasadena, the City of San Gabriel, the City of South Pasadena, the City of San Marino, the County of Los Angeles and the Los Angeles County Flood Control District.

As a participant in the group, the City of Rosemead intends to share in the development cost of both the Enhanced Watershed Management Program (EWMP) and Coordinated Integrated Monitoring Program (CIMP) as determined by the group. A cost sharing formula, which demonstrates an equitable distribution of project costs, has been agreed upon by all participating members of the Group.

The City's continued participation in the development of these programs is contingent upon the successful procurement of a qualified professional services firm during Fall 2013. Additionally, the City of Rosemead will actively participate in this effort unless any administrative order or judicial action causes the permit, or any portions thereof, to be stayed or invalidated. This intention to participate applies solely to the creation of the Enhanced Watershed Management Program and Coordinated Integrated monitoring Program.

Should you have any questions, please contact staff members Chris Marcarello at (626) 569-2118 or cmarcarello@cityofrosemead.org or Sean Sullivan at (626) 569-2189 or ssullivan@cityofrosemead.org.

Sincerely,



Jeff Allred
City Manager

Cc: Ivar Ridgeway, Los Angeles Regional Water Quality Control Board
Renee Purdy, Los Angeles Regional Water Quality Control Board
Rosemead City Council
Chris Marcarello, City of Rosemead
Sean Sullivan, City of Rosemead
Alfredo Magallanes, City of Los Angeles



May 30, 2013

Samuel Unger, Executive Officer
Los Angeles Regional Water Quality Control Board
320 West Fourth Street, Suite 200
Los Angeles, California 90013

**LETTER OF INTENT PLEDGING COMMITMENT IN THE DEVELOPMENT
OF AN ENHANCED WATERSHED MANAGEMENT PROGRAM AND
COORDINATED INTEGRATED MONITORING PROGRAM IN
COLLABORATION WITH THE UPPER LOS ANGELES RIVER WATERSHED
GROUP**

Dear Mr. Unger:

The City of San Gabriel, with this letter, pledges to collaborate with the Upper Los Angeles River Watershed (Group) in the development of an Enhanced Watershed Management Program (EWMP) and Coordinated Integrated Monitoring Program (CIMP) in accordance with the new MS4 Permit by Order No. R4-2012-0175 for submission to your Board. The Group includes the following agencies: the City of Los Angeles, the County of Los Angeles, Los Angeles County Flood Control District, the City of Alhambra, the City of Burbank, the City of Calabasas, the City of Glendale, the City of Hidden Hills, the City of La Cañada Flintridge, the City of Monterey Park, the City of Pasadena, the City of Rosemead, the City of San Gabriel, the City of South Pasadena, and the City of San Marino.

The City of San Gabriel further pledges to cost share the development cost of both the Enhanced Watershed Management Program (EWMP) and Coordinated Integrated Monitoring Program (CIMP). A cost sharing formula has been agreed by all participating members of the Group as to the equitable distribution of costs.

Should you have any questions, please contact Daren Grilley, of my staff, at dgrilley@sgch.org or at (626) 308-2806 ext. 4631.

Sincerely,

Steven A. Preston
City Manager

cc: Rene Purdy, Los Angeles Regional Water Quality Control Board
Ivar Ridgeway, Los Angeles Regional Water Quality Control Board
Jennifer Davis, Community Development Director
Daren Grilley, City Engineer
Enrique Zaldivar, City of Los Angeles, Bureau of Sanitation
Shahram Kharaghani, City of Los Angeles, Bureau of Sanitation

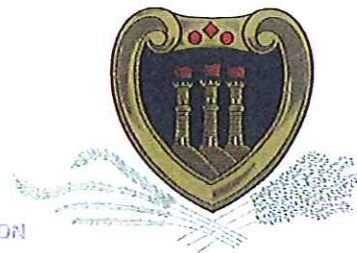
City of San Marino

Office of the City Manager

RECEIVED

JUN 12 2013

WATER PROTECTION DIVISION



JOHN T. SCHAEFER
City Manager

June 4, 2013

Samuel Unger, Executive Officer
Los Angeles Regional Water Quality Control Board
320 West Fourth Street, Suite 200
Los Angeles, California 90013

Attention: Renee Purdy

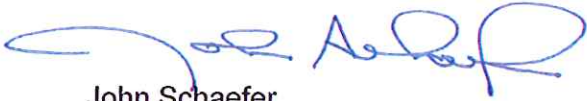
LETTER OF INTENT PLEDGING COMMITMENT IN THE DEVELOPMENT OF AN ENHANCED WATERSHED MANAGEMENT PROGRAM AND COORDINATED INTEGRATED MONITORING PROGRAM IN COLLABORATION WITH THE UPPER LOS ANGELES RIVER WATERSHED GROUP

Dear Mr. Unger;

The City of San Marino, with this letter, pledges to collaborate with the Upper Los Angeles River Watershed Group (Group) in the development of an Enhanced Watershed Management Program (EWMP) and Coordinated Integrated Monitoring Program (CIMP) in accordance with the new MS4 Permit by Order No. R4-2012-0175 for submission to your Board. The Upper Los Angeles Watershed Group includes only the following agencies: The City of Alhambra, the City of Burbank, The City of Calabasas, the City of Los Angeles, the city of El Monte, the City of Glendale, the City of Hidden Hills, the City of La Canada Flintridge, the County of Los Angeles, the City of Montebello, the City of Monterey Park, the City of Pasadena, the City of Rosemead, the City of San Gabriel, the City of San Marino, the City of South Pasadena, the City of Temple City, and the Los Angeles County Flood Control District.

The City of San Marino further pledges to cost share the development cost of both the Enhanced Watershed Management Program (EWMP) and Coordinated Integrated Monitoring Program (CIMP). A cost sharing formula has been agreed by all participating members of the Group as to the equitable distribution of costs.

Sincerely,

A handwritten signature in blue ink, appearing to read "John Schaefer". The signature is fluid and cursive, with a large initial "J" and "S".

John Schaefer
City Manager

cc:

Renee Purdy, California Regional Water Quality Control Board, Los Angeles Region
Ivar Ridgeway, California Regional Water Quality Control Board, Los Angeles Region
Alfredo Magallanes, City of Los Angeles, Bureau of Sanitation



CITY OF SOUTH PASADENA

OFFICE OF THE CITY MANAGER
1414 MISSION STREET, SOUTH PASADENA, CA 91030
TEL: 626.403.7210 ■ FAX: 626.403.7211
WWW.CI.SOUTH-PASADENA.CA.US

June 5, 2013

Samuel Unger, Executive Officer
California Regional Water Quality Control Board, Los Angeles Region
320 W. 4th Street, Suite 200
Los Angeles, CA 90013

Attention: Renee Purdy

**Subject: LETTER OF INTENT PLEDGING COMMITMENT IN THE DEVELOPMENT OF
AN ENHANCED WATERSHED MANAGEMENT PROGRAM AND
COORDINATED INTEGRATED MONITORING PROGRAM IN
COLLABORATION WITH THE UPPER LOS ANGELES RIVER WATERSHED
GROUP**

Dear Mr. Unger:

The City of South Pasadena, with this letter, pledges to collaborate with the Upper Los Angeles River Watershed Group (Group) in the development of an Enhanced Watershed Management Program (EWMP) and Coordinated Integrated Monitoring Program (CIMP) in accordance with the new MS4 Permit by Order No. R4-2012-0175 for submission to your Board. The Upper Los Angeles Watershed Group includes only the following agencies: The City of Los Angeles, the City of Alhambra, the City of Burbank, the City of Calabasas, the City of Glendale, the City of Hidden Hills, the City of La Canada Flintridge, the City of Monterey Park, the City of Pasadena, the City of Rosemead, the City of San Gabriel, the City of South Pasadena, the City of San Marino, the County of Los Angeles and the Los Angeles County Flood Control District.

The City of South Pasadena further pledges to cost share the development cost of both the Enhanced Watershed Management Program (EWMP) and Coordinated Integrated Monitoring Program (CIMP). A cost sharing formula has been agreed by all participating members of the Group as to the equitable distribution of costs.

Should you have any questions, please contact Public Works Director Paul Toor at ptoor@ci.south-pasadena.ca.us or (626) 403-7242.

Sincerely

A handwritten signature in blue ink, appearing to read 'Sergio Gonzalez', with a stylized flourish at the end.

Sergio Gonzalez
City Manager

cc:

Renee Purdy, California Regional Water Quality Control Board, Los Angeles Region
Ivar Ridgeway, California Regional Water Quality Control Board, Los Angeles Region
Paul Toor, Public Works Director
Shin Furukawa, Deputy Public Works Director
John L. Hunter, John L. Hunter & Associates, Inc.



9701 LAS TUNAS DRIVE • TEMPLE CITY • CALIFORNIA 91780-2249 • (626) 286-2171

June 17, 2013

Samuel Unger, Executive Officer
Los Angeles Regional Water Quality Control Board
320 West Fourth Street, Suite 200
Los Angeles, California 90013

Attention: Renee Purdy

**LETTER OF INTENT PLEDGING COMMITMENT IN THE DEVELOPMENT OF AN
ENHANCED WATERSHED MANAGEMENT PROGRAM AND COORDINATED
INTEGRATED MONITORING PROGRAM IN COLLABORATION WITH THE
UPPER LOS ANGELES RIVER WATERSHED GROUP**

Dear Mr. Unger;

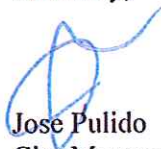
The City of Temple City, with this letter, pledges to collaborate with the Upper Los Angeles River Watershed Group (Group) in the development of an Enhanced Watershed Management Program (EWMP) and Coordinated Integrated Monitoring Program (CIMP) in accordance with the new MS4 Permit by Order No. R4-2012-0175 for submission to your Board. The Upper Los Angeles Watershed Group includes only the following agencies: The City of Los Angeles, the city of Alhambra, the city of Burbank, the city of Calabassas, the city of Glendale, the city of Hidden Hills, the city of La Canada Flintridge, the city of Monterey Park, the city of Pasadena, the city of Rosemead, the city of San Gabriel, the city of South Pasadena, the city of San Marino, the city of Temple City, the County of Los Angeles and the Los Angeles County Flood Control District.

The City of Temple City further pledges to cost share the development cost of both the Enhanced Watershed Management Program (EWMP) and Coordinated Integrated Monitoring Program (CIMP). A cost sharing formula has been agreed by all participating members of the Group as to the equitable distribution of costs.

Letter of Intent for Upper Los Angeles River Watershed Group
June 17, 2013
Page 2 of 2

Should you have any questions, please contact me at Mark Persico, AICP, Community Development Director, at (626)285-2171 or mpersico@templecity.us.

Sincerely,



Jose Pulido
City Manager

Green Street and Brandon Street Road Improvement Project

Regulatory Background

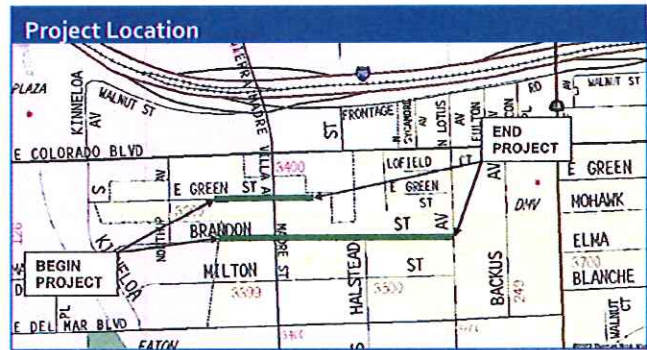
The Brandon Street and Green Street Improvements Project area drains to Eaton Wash which is tributary to Rio Hondo and then to the Los Angeles River. The Los Angeles River has Total Maximum Daily Load (TMDL) regulations for Trash, Nutrients, Metals, and Bacteria.

Environmental Benefits

The project will reconstruct approximately 0.16 miles of roadway on Green Street and 0.39 miles on Brandon Street. The design includes several green street elements including permeable pavers, bio-retention planters, sediment filtration catch basins, and an underground infiltration basin.

Approximately 1,800 feet of bioretention planter boxes (bioswales) will be constructed throughout the project limits. In addition, an underground infiltration basin system will be installed at the cul-de-sac of Green Street with 5,800 cubic feet of infiltration capacity. Trees and drought-tolerant plants will also be added throughout the project.

Much of the runoff from the streets and private properties that had previously drained to Rio Hondo untreated will now infiltrate through the permeable sidewalks and gutters, bioswales, and infiltration basin. This will help augment the groundwater and prevent pollutants from entering the Los Angeles River.



Location

The project consists of 0.55 miles of street improvements on Brandon and Green Streets in the unincorporated area of East Pasadena. The surrounding area is predominantly residential with some commercial uses.

Schedule

Award	December 2013
Construction	Spring 2014 to Fall 2014

Cost

The construction cost is estimated to be \$2.9 million.



HUMBOLDT GREENWAY PROJECT

Los Angeles River Watershed

January 2013

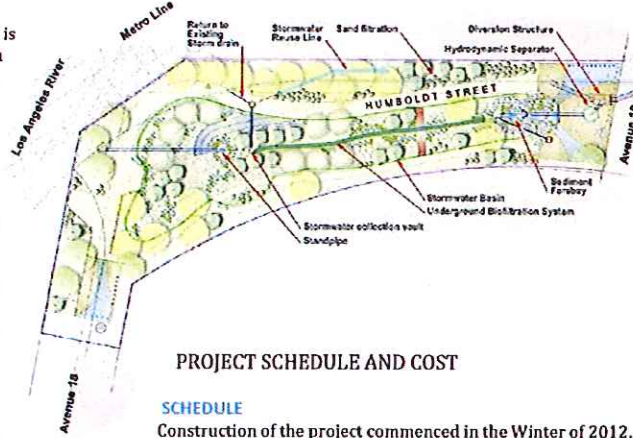
FACT SHEET



PROJECT DESCRIPTION

ENVIRONMENTAL SETTING

The Humboldt Neighborhood Greenway Project is located in the Lincoln Heights neighborhood within the northeastern part of the City of Los Angeles. The project site currently consists of 1.15 acres total area which includes an unpaved portion of the Humboldt Street right of way between 18th and 19th Avenue along with four city owned vacant parcels (0.3 acres). The project will intercept and treat street level flows from the Humboldt and Avenue 19 intersection area through a bio-swale within the plaza and storm drain day-lighting as both an aesthetic and functional feature that will help to alleviate local street flooding. The project will also include a fenced area for public use that supports enhanced native habitats along the LA River corridor and will integrate native plant materials within a constructed topography that features signage, trails, passive recreation and an open plaza on site frontage at 19th Street. This project will enhance water quality, provide a natural habitat and community recreational opportunities, and promote the idea that urban streams are a valuable resource to be enjoyed rather than a nuisance to be constructed underground.



PROJECT SCHEDULE AND COST

SCHEDULE

Construction of the project commenced in the Winter of 2012, with an anticipated duration of 14 to 16 months. The project schedule is shown below.

Project Schedule

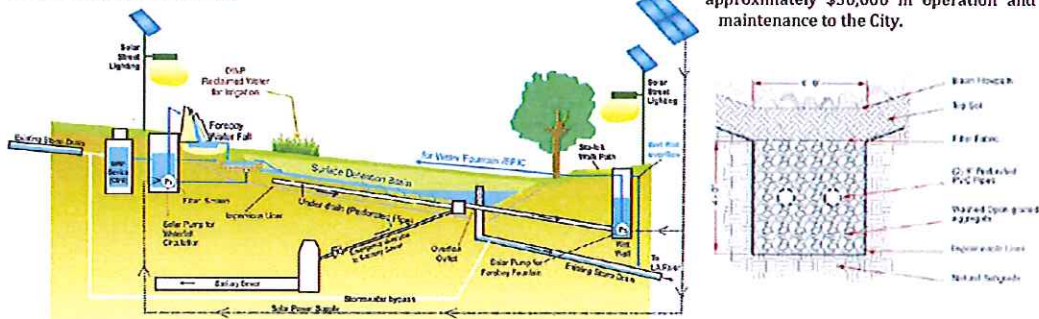
	2012	2013	2014	2015
Construction				
Post-Construction				

DESCRIPTION OF BMP

This project consists of intercepting an existing storm drain system and constructing a stormwater greenway with a "stream" eco-system through the corridor on Humboldt Street with a pedestrian path connecting Avenue 18 and Avenue 19. The elements include a pollution reduction/infiltration system and an approximately 175-foot long graded swale/open-channel, which is surrounded by a vegetated basin. Work also includes a) an overflow structure; b) a pedestrian bridge; c) an irrigation system; d) landscaping and tree planting; e) solar lighting.

COST

The project is estimated to cost approximately \$4.5 million, which includes administration, design and construction management, construction, and optimization phase. This project is projected to result in an annual increase of approximately \$50,000 in operation and maintenance to the City.



Watershed Protection Division
Bureau of Sanitation

Department of Public Works
City of Los Angeles

Attachment 5 – Specific Actions and Status for Compliance with Interim and Final Milestones of the Upper Los Angeles River Watershed Trash TMDL

TMDL	Permittees	Implementation Plan and Control Measures	Status of Implementation
Los Angeles River Trash TMDL 2007-012	County of Los Angeles	Install Full Capture Systems or other BMPs to reduce baseline by 80%	Completed
		Install Full Capture Systems or other BMPs to reduce baseline by 90%	Completion anticipated by September 30, 2014
		Install Full Capture Systems or other BMPs to reduce baseline by 96.7%	Completion anticipated by September 30, 2015
		Install Full Capture Systems or other BMPs to reduce baseline by 100%	Completion anticipated by September 30, 2016

Monterey Park

Monterey Park has chosen to conduct Daily Generation Rate (DGR) studies to demonstrate compliance with the Trash TMDL. John L. Hunter and Associates (JLHA) has conducted five DGR studies for Monterey Park since 2008. The 2012 studies demonstrate that the city of Monterey Park has met at least a 94% compliance level. This year, JLHA will be conducting a 6th DGR study for Monterey Park. The city has installed approximately 148 full capture CPS inserts in high generating trash areas (commercial and industrial areas).

Compliance reports have been submitted to the Los Angeles Regional Water Quality Control Board (Regional Board) every year after completion of the DGR studies. The intention of such studies is to demonstrate to the Regional Board that the city is within established levels of the scheduled waste load allocations and has met stormwater discharge compliance requirements.

South Pasadena

South Pasadena has chosen to conduct Daily Generation Rate (DGR) studies to demonstrate compliance with the Trash TMDL. John L. Hunter and Associates (JLHA) has conducted five DGR studies for South Pasadena since 2008. The 2012 studies demonstrate that the city of South Pasadena has met at least a 95% compliance level. This year, JLHA will be conducting a 6th DGR study for South Pasadena. South Pasadena is currently reviewing the possibilities of installing full capture CPS and/or ARS units.

Compliance reports have been submitted to the Los Angeles Regional Water Quality Control Board (Regional Board) every year after completion of the DGR studies. The intention of such studies is to demonstrate to the Regional Board that the city is within established levels of the scheduled waste load allocations and has met stormwater discharge compliance requirements.

Temple City

Temple City has chosen to conduct Daily Generation Rate (DGR) studies to demonstrate compliance with the Trash TMDL. John L. Hunter and Associates (JLHA) has conducted five DGR studies for Temple City and has surpassed the targets for each of those years. The 2012 studies demonstrate that the city of Temple City has met at least a 93% compliance level. This year, JLHA will be conducting a 6th DGR study for Temple City. Temple City is currently reviewing the possibilities of installing full capture CPS and/or ARS units.

Compliance reports have been submitted to the Los Angeles Regional Water Quality Control Board (Regional Board) every year after completion of the DGR studies. The intention of such studies is to demonstrate to the Regional Board that the city is within established levels of the scheduled waste load allocations and has met stormwater discharge compliance requirements.