

State Water Resources Control Board

EX PARTE DISCLOSURE REQUIREMENTS FOR PENDING GENERAL ORDERS

The prohibition against ex parte communications no longer applies to general waste discharge requirements (including NPDES permits), general waivers and general Clean Water Act section 401 water quality certifications. A “general order” does not name specific dischargers, but instead allows eligible dischargers to enroll. The following information will help the public comply with the requirement to meet statutory disclosure requirements. For more information, see Water Code section 13287 and http://www.waterboards.ca.gov/laws_regulations/docs/exparte.pdf.

Must I disclose ex parte communications with board members regarding pending general orders?

You must provide written disclosure if you are in one of these categories:

- Potential enrollees (including their representatives or employees)
- Persons with a financial interest (including their representatives or employees). For a definition of “financial interest,” consult the Political Reform Act (Gov. Code, § 87100 et seq.) and implementing regulations (Cal. Code of Regs., tit. 2, § 18700 et seq.), or the Fair Political Practices Commission website (<http://www.fppc.ca.gov/index.php?id=51>)
- Representatives acting on behalf of any formally organized civic, environmental, neighborhood, business, labor, trade, or similar association

What must I disclose?

The attached form lists the information that must be disclosed to document a meeting, telephone call or other conversation. For written communications, a complete copy of the letter or email with all attachments is adequate.

When is the disclosure due?

Water Board staff must receive the disclosure within seven (7) working days after the board member receives the communication (generally, the date of a phone call or meeting with a board member).

Who must receive my disclosure documents?

Unless the board member(s) provided you with a different contact person, please send your materials to: commentletters@waterboards.ca.gov

What will the Water Board do with my disclosure?

The Water Board is required to post the disclosure on its website and to distribute it via any electronic distribution list for the proposed order. There is no requirement to distribute the disclosure to board members or to prepare responses. If you want to submit written comments or evidence on a proposed general order, you must provide the comments or evidence following the procedure and timelines provided in the notice for the board’s proceeding.

May other interested persons respond to a disclosure notice?

The Water Code does not require that interested persons be allowed to respond to disclosure notices. Any such responses should be included in formal comments submitted during the order’s written comment period, included in oral comments at the hearing, or both.

**STATE WATER RESOURCES CONTROL BOARD
EX PARTE COMMUNICATIONS REGARDING PENDING GENERAL ORDERS
DISCLOSURE FORM**

Note: This form is intended to assist the public in providing the disclosure required by law. It is designed to document meetings and phone calls. Written communications may be disclosed by providing a complete copy of the written document, with attachments. Unless the board member(s) provided you with a different contact person, please send your materials to: commentletters@waterboards.ca.gov

Use of this form is not mandatory.

1. Pending General Order that the communication concerned:

2. Name, title and contact information of person completing this form:
Note: Contact information is not mandatory, but will allow the Water Board to assist you if additional information is required. If your contact information includes your personal residence address, personal telephone number or personal email address, please use a separate sheet of paper if you do not want that information posted on our website. However, this information may be provided to members of the public under the Public Records Act.

3. Date of meeting, phone call or other communication:

Time:

Location:

4. Type of communication (written, oral or both):

5. Names of all participants in the communication, including all board members who participated:

6. Name of person(s) who initiated the communication:

7. Describe the communication and the content of the communication. *Include a brief list or summary of topics discussed at the meeting, any legal or policy positions advocated at the meeting, any factual matters discussed, and any other disclosure you believe relevant. The Office of Chief Counsel recommends that any persons requesting an ex parte meeting prepare an agenda to make it easier to document the discussion properly. Attach additional pages, if necessary.*

8. **Attach a copy of handouts, PowerPoint presentations and other materials any person used or distributed at the meeting. If you have electronic copies, please email them to facilitate web posting.**

CENTRAL COAST REGION ILRP DATA MANAGEMENT

June 27, 2017

AGENDA

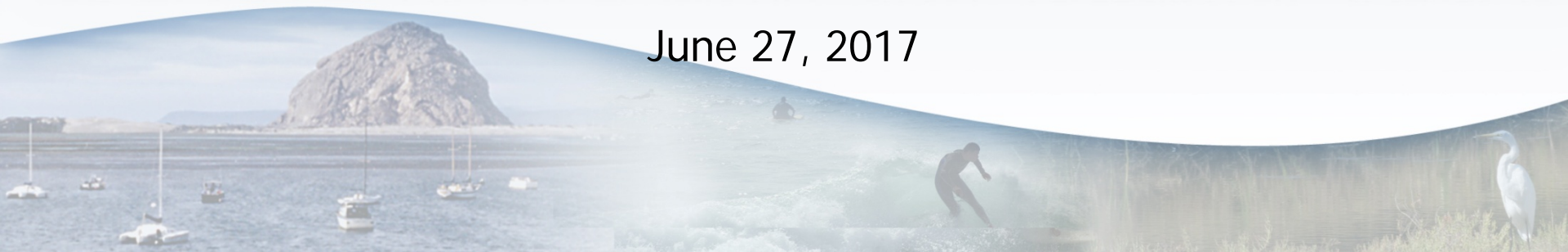
1. Introductions of Central Coast Water Board staff (Chris Rose, ILRP Manager, Central Coast Water Board)
2. Introductions: around the table and telephone
3. Objective of meeting (Chris Rose)
4. Presentation: "Electronic Reporting Required for Individual Dischargers at Central Coast Water Board" (Elaine Sahl)
5. Presentation: "Total Nitrogen Applied Data Management at the Central Coast Water Board" (Arwen Wyatt-Mair)
6. Discussion (Group)
7. Wrap-up (Chris Rose)

Electronic Reporting Required for Individual Dischargers

**Central Coast Water Board
Irrigated Lands Regulatory Program**

Elaine Sahl

June 27, 2017



Meeting Objectives

- Provide update on the implementation of electronic reporting
- Provide summary of information received from individual dischargers
- Provide summary of coordination with Coalitions to implement monitoring

Overview

- PART 1: Background, Priorities, Statistics
- PART 2: Individual Discharger Information
- PART 3: Case Management & Implementation
- PART 4: Outcomes and Benefits



Part 1

Background

Priorities

Statistics



Background

- 2005 – Hardcopy Notice of Intent
 - Quickly inaccurate and out of date
 - Not easily accessible
- 2010 – electronic Notice of Intent
- 2012 – electronic Annual Compliance reporting
- 2017 – Individual dischargers continue to report electronically

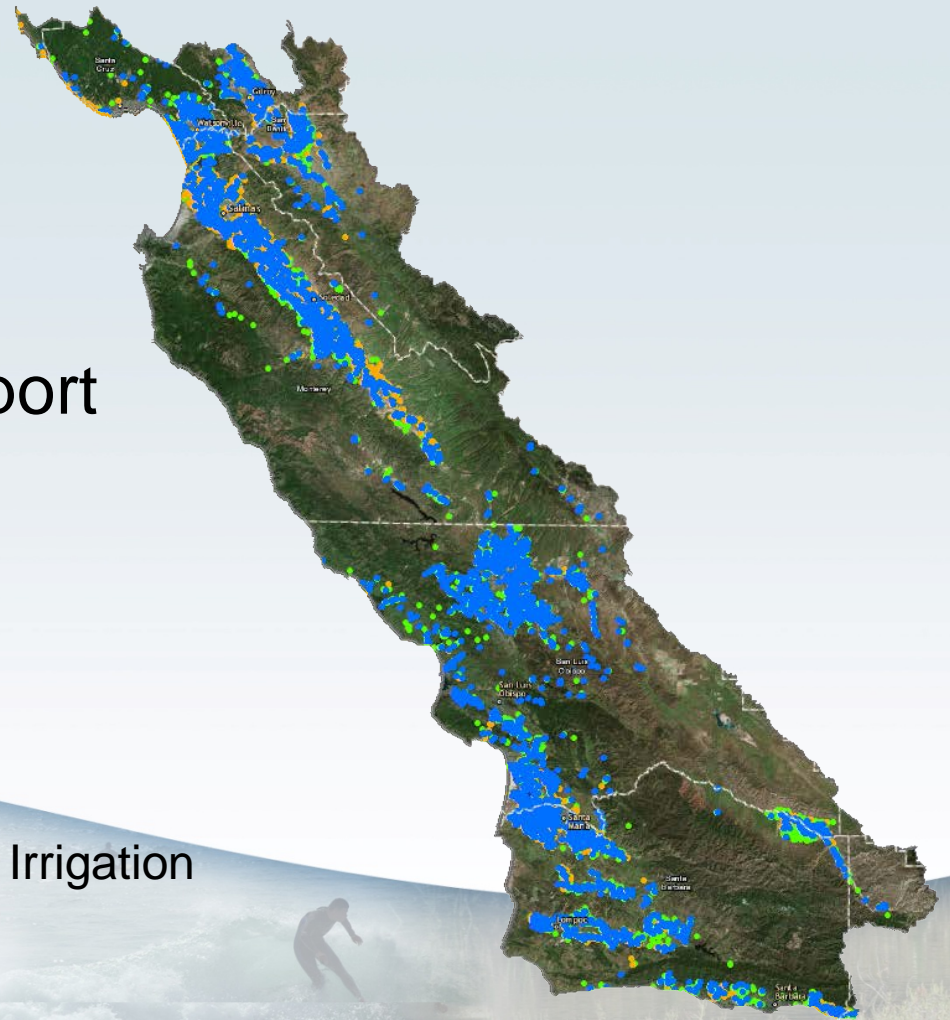


Data Management Priorities

- Secure data management system available to Water Board and public
- System enables Individual Dischargers to submit, review, and update info in a timely manner to ensure accuracy
- System enables Water Board to efficiently evaluate individual compliance
- System enables Water Board to identify water quality priorities

Current Individual Reporting

- Enrollment
 - 4,334 Farms
 - 424,352 Irrigated Acres
- Annual Compliance Report
 - 2,797 Farms
 - 311,214 Irrigated Acres
- Well Monitoring
 - Individual and Coalition
 - 1,396 Domestic & 2,578 Irrigation
 - 584 Domestic



Part 2

Individual Discharger Information

Enrollment, Annual Compliance Reporting, Monitoring




Individual Discharger Info

Enrollment

- Owners and/or operators must enroll by submitting an electronic Notice of Intent (eNOI)

Agricultural Regulatory Program

 You can receive irrigated ag program updates by e-mail.
Subscribe online: [Agricultural Discharges](#)

Enroll in the Agricultural Regulatory Program and Update NOI Information

Owners and/or operators of irrigated cropland on or from which there are discharges of waste that could affect the quality of any surface water or groundwater must enroll in the Agricultural Order by submitting a Notice of Intent (NOI). The NOI form must be filled out electronically, using the links below. Owners and/or operators that have submitted an electronic NOI and have a username and password, must login using the Returning eNOI Users link.

[New eNOI Users](#)

[Returning eNOI Users](#)

Annually by October 1, growers must update the eNOI to reflect any changes to the operation or ranch/farm information, including any changes in acreage or contact information. Growers with Tier 2 and Tier 3 ranches/or farms must also submit the Annual Compliance Form (ACF) to describe progress towards compliance with the Order, including implementation of management practices, treatment or control measures, or changes in farming practices.

***Note:** [Returning eNOI Users](#) are initially provided a temporary username and password from the Water Board. After growers login with this temporary information, growers are prompted to create a unique username and password. Please save this unique username and password, as it is required for future logins*

Forms & Instructions

These documents can be useful as guides for submitting, viewing, and/or updating electronic NOI information. Please check back here for periodic updates to these documents.

[Sample Electronic NOI Form](#)

Electronic NOI Field Descriptions: [ENGLISH](#) or [SPANISH](#)

[Electronic NOI Information and Instructions](#)

Water Board Contact Information

If you have any questions regarding the electronic NOI or Annual Compliance Form please contact:

Water Board staff at (805) 542-4645 or AgNOI@waterboards.ca.gov

Para información en Español llame a Monica Barricarte al [805] 549-3881

Section XI: Ranch/Farm Characteristics

Total Irrigated Acres:

Total Tailwater Acres
Equals A + B + C and cannot
exceed Total Irrigated Acres:

Irrigation Discharge Type:
(MW in all that apply)

- A). Acres Discharging to ONLY Ditches or Any Other Type of Surface Discharge:
- B). Acres Discharging to ONLY Tile Drains or Any Other Type of Sub-Surface Drainage System:
- C). Acres Discharging to BOTH Ditches and Tile Drains:
- D). Acres Discharging to Pond(s):

Irrigation System Type(s):
(check all that apply)

- Micro-irrigation year round (drip and micro-sprinklers) and no pre-irrigation
- Sprinklers used for pre-irrigation only and then micro-irrigation
- Sprinklers used for germination or in the growing season
- Surface irrigation systems (furrow and/or flood) throughout the growing season, at any point in time, and/or in combination with any other irrigation system type
- Other:

Crop Type(s):
(check and/or state for all that apply)

Are any of the following crop types produced on this ranch: beet, broccoli, cabbage, cauliflower, celery, Chinese cabbage (Napa), collard, endive, kale, leek, lettuce (leaf and head), mustard, onion (dry and green), spinach, strawberry, pepper (fruiting), or parsley? YES NO

Row / Field *(select specific crop(s) from drop down lists):*

Vineyard Nursery Orchard Greenhouse

Backflow Prevention Devices and Well Abandonment

- Are fertilizers applied through the irrigation system on this ranch/farm (e.g. fertigation)? YES NO
- Are pesticides, fumigants and/or other chemicals applied through the irrigation system on this ranch/farm (e.g. chemigation)? YES NO
- If YES to either of the above questions, are back-flow prevention device(s) installed and maintained to prevent pollution of groundwater and surface water? YES NO PLANNED
- How many groundwater wells are present on this ranch/farm that are permanently inactive with no intended future use (e.g. abandoned)?
- How many abandoned groundwater wells, on this ranch/farm, have been properly destroyed in the last 12 months?

Sustainability Certification

- Is this ranch/farm certified sustainable? YES NO
- If YES, select the type of certification?
- If YES, what is the certification date?
(MMDD/YYYY)

Section

Section X: Mo

How many

See Help / Inst

How many

GROUNDW

Individu

WB STAFF US

Coopera

OWNER



Individual Discharger Info

Annual Compliance Reporting

- Owners and/or operators of Tier 2 and Tier 3 Farms must submit an electronic Annual Compliance Form (eACF)

TEST OPERATION						
EDIT OPERATION INFORMATION		PRINT OPERATION FORM		ADD RANCH / FARM TO THIS OPERATION		
EDIT RANCH INFO	<u>RANCH / FARM NAME</u>	<u>ADDRESS</u>	<u>CITY</u>	<u>IRRIGATED ACRES</u>	<u>TAILWATER ACRES</u>	<u>RANCH / FARM TIER</u>
	MY RANCH	MAIN STREET	DAVIS	0	0	[EDIT COMPLIANCE INFO]



Individual Discharger Info

eACF

2,797 Farms → 311,214 Irrigated Acres

Nutrient Management - Practice Implementation

Nutrient Management - Practice Assessment

Nutrient Management - Practice Outcome(s)

Identify outcomes that demonstrate progress towards reducing or eliminating the discharge of wastes off this ranch / farm in the last 12 months, if any.

- None
- Annual fertilizer nitrogen application reduced.
- Total nitrogen applied as fertilizer and in irrigation water matches crop need.
- Reduction in nitrate concentration or load, in irrigation runoff.
- Reduction in nitrate concentration or load, in surface receiving water.
- Reduction in nitrate loading to groundwater.
- Reduction in nitrate concentration in groundwater.

State the primary season(s) when irrigation runoff leaves this ranch / farm:

- Winter (December 21 - March 20)
- Spring (March 21 - June 20)

State the estimated maximum total volume of irrigation runoff leaving from your ranch / farm on the highest flow day of the year. Report in gallons per day.

Greater Than 20,000

Section F: Tile Drain Discharge Characteristics

Does tile drain water leave this ranch / farm?

YES NO

If YES provide the following information:

Where is the closest drainage point from this ranch/farm to any surface water body (e.g., Stream, Lake, Bay, and/or Ocean)?

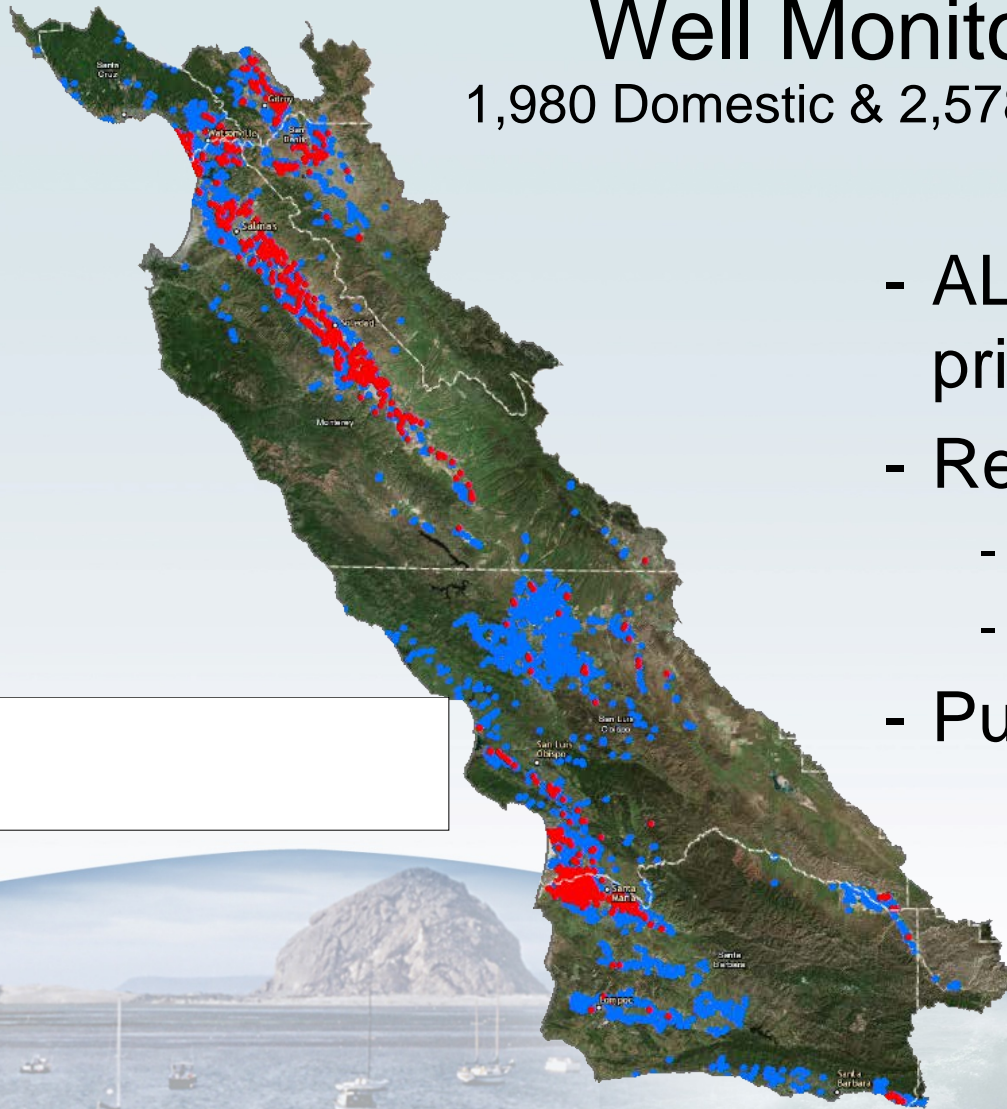
State the number of locations where tile drain water leaves this ranch/farm.

Individual Discharger Info

Well Monitoring

1,980 Domestic & 2,578 Irrigation

- ALL domestic wells and primary irrigation well
- Results Uploaded by Lab
 - Consistent (QAQC)
 - Electronic format
- Public Available Information





Part 3

Case Management & Program Implementation



Individual Dischargers

Case Management

MANAGE INDIVIDUAL DISCHARGERS - OPEN CASES

Enter an address **Map Address**

Permitted Facilities

- Waste Discharge Requirements (WDR) Sites
- Permitted USTs - [INFO](#)
- DTSC Hazardous Waste Sites
- Land Disposal Sites
- Irrigated Lands Regulatory Program Sites
- Oil / Gas Sites
- Confined Animal Sites

Other Sites

- Project Sites
- Non-Case Information Sites
- Sampling Points - Private
- Sampling Points - Public
- Field Points
- Public Water Wells

SIGNIFIES A CLOSED SITE

Data Filters

Tools

- Measure a Distance
- Site Quick Search
- Right-click or perform a long left-click on the map to access additional location specific tools

Map Coverages

Geology and Hydrogeology

- California Watersheds
- Geologic Units
- DWR Groundwater Basins - [INFO](#)

Local and State Coverages

- Disadvantaged Communities
- Counties
- Public Land Survey System (PLSS) - ZOOM IN
- Regional Board Boundaries
- Department of Water Resources Regions
- Public Water Systems

ACTIVITIES

ADAM

FOXEN
SANTA
SANTA

[VIEW PR](#)
[VIEW eNC](#)
[VIEW CO](#)

LOGOUT

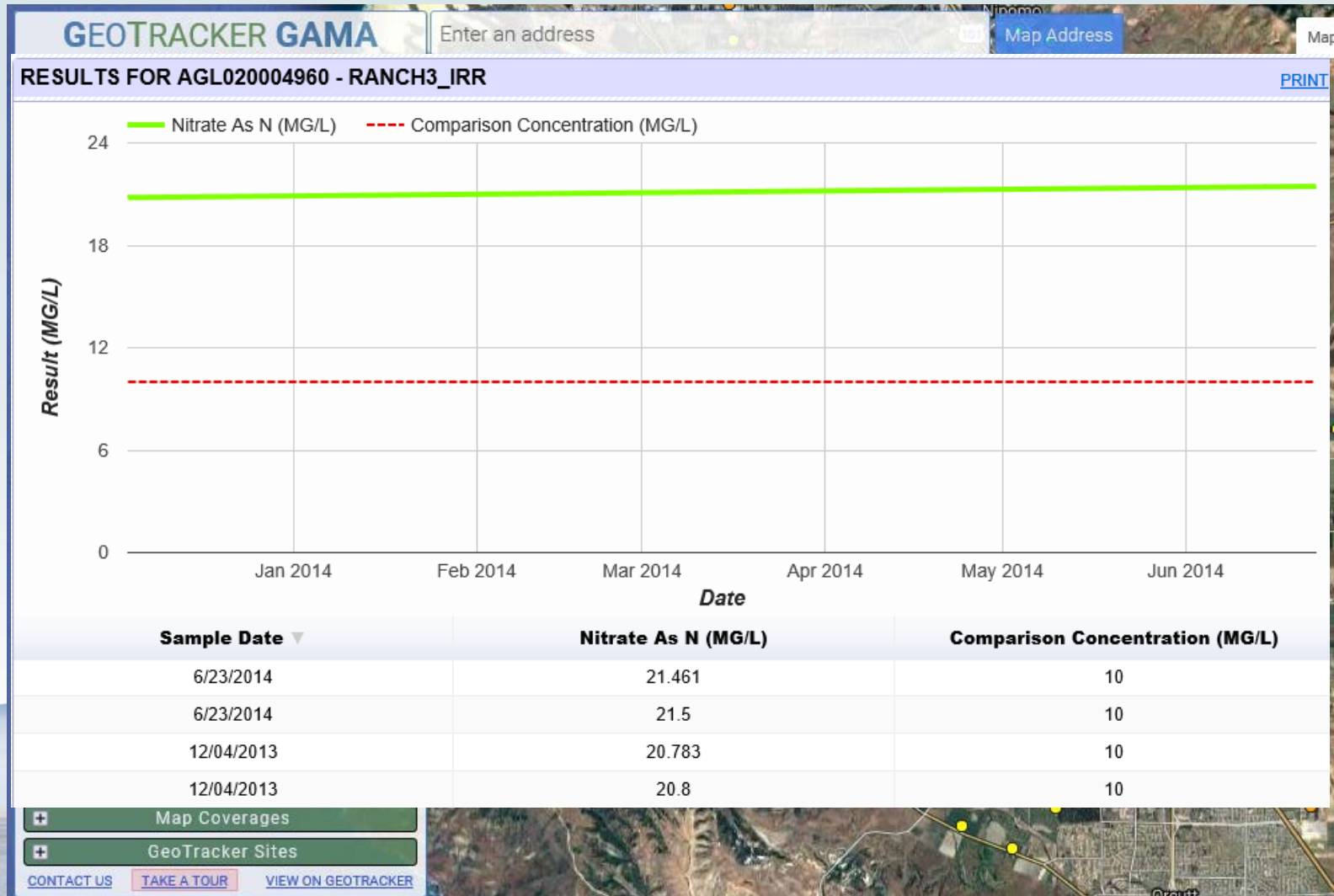
LAND

DATE

Requirement

Well Monitoring

In Coordination with Coalition/Cooperative



Assessment & Prioritization

- Individual reporting
 - Enrollment
 - Annual Compliance Reporting
 - Well Monitoring
- Individual location or proximity
 - Impairment locations / areas
 - Basin / sub-basin areas
 - Regional scale

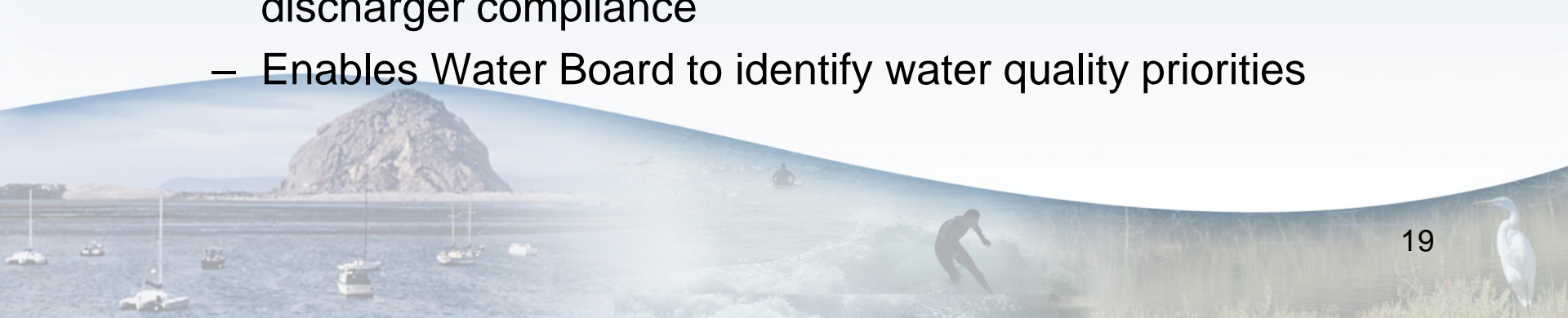
Part 4

Outcomes and Benefits



Outcomes

- Individual discharger reporting
- Positive response from regulated community
- Addresses data management priorities...
 - Secure system available to Water Board and public
 - Enables Individual Dischargers to submit, review, and update info in a timely manner to ensure accuracy
 - Enables Water Board to efficiently evaluate individual discharger compliance
 - Enables Water Board to identify water quality priorities



Benefits

- Ability to share data quickly
 - SWB , CDFA, CDPH, assistance providers, public, interested parties, other agencies
- Ability to use limited resources efficiently
- Ability to address the most serious water quality issues



Questions



Total Nitrogen Applied

Data Management

Central Coast Water Board
Irrigated Lands Regulatory Program

Arwen Wyatt-Mair

June 27, 2017

Overview

- Background
- Form features and submittal
- Data navigation
 - Ranch-level reporting
 - Automated calculations
- Benefits

Background

	Ranches Enrolled	Acres Enrolled
Region 3	4,334	424,352
Due Date	Ranches Reporting	Acres Reporting
Oct 1, 2014	>600	115,000
Oct 1, 2015	>700	118,000
Oct 1, 2016	>700	117,000
Due Date	Ranches Predicted	Acres Predicted
Mar 1, 2018	1,700	230,000

Form Features

- Electronic fillable (“live”) PDF form
 - Interactive upgrades made over time
- Submitted via email
- Data automatically imported to Excel

Total Nitrogen Applied Form

IRRIGATED LANDS REGULATORY PROGRAM TOTAL NITROGEN APPLIED REPORT FORM

Page 1 of 3
May 30, 2017 Version

CENTRAL COAST REGIONAL WATER QUALITY CONTROL BOARD

EMAIL FILLABLE ELECTRONIC FORM AS AN ATTACHMENT: Attach completed and saved fillable ("live") electronic form and send to AgNOI@waterboards.ca.gov

Reporting Period: 01/01/2017 to 12/31/2017

Click below to clear the corresponding section of the form.

Section I Section II Section III Section IV All

SECTION I: GENERAL RANCH INFORMATION (Space for more parcels and multiple counties on page 2)

AW: MW1234 Ranch Global ID: AGL020001234 Ranch Name: Test Physical Ranch Acres Reporting: 100
 County: [dropdown] APN(s): [dropdown] Fallow Acres: [dropdown] (if fallow entire reporting period)
 If ranch is a greenhouse, nursery, or hydroponic, select from the dropdown: [dropdown] Sum of Total Crop Acres: 75 (Auto-calculates from Section I)

SECTION II: NITROGEN APPLIED WITH IRRIGATION WATER (Include all sources and applications, e.g. leaching, runoff, backflush, operational spills, etc.)

Section II-A: Water source(s)	Section II-B: Purple pipe water	Section II-C: Well/city water (or other non-purple pipe water)	Section II-D: Nitrogen applied
Select the option that includes all sources of irrigation water used during the reporting period. Select the first option in the dropdown menu unless purple pipe water is used for irrigation. Only well, city, blue valve, or other no [dropdown]		Average Nitrate Concentration in Well/City Water (mg/L) 50 <input checked="" type="checkbox"/> as Nitrate (NO3) <input type="checkbox"/> as Nitrogen (NO3-N or N) <i>To calculate the weighted average concentration if more than one sample from one or more sources of irrigation water was used, use the Excel tool 'weighted_avg_conc'</i>	Estimated Total Volume of Well/City Water Applied to Entire Reporting Acres During Reporting Period (gallons) 5,000,000 <i>This field can be erased before submittal. Do not include volume of agency-delivered purple pipe water applied. To convert from acre-feet or inches to gallons, use the Excel tool 'convert_to_gallons'</i>
			Nitrogen Applied with Irrigation Water (lbs/ranch-ac*) 4.76 <i>Physical ranch acres minus fallow acres. This field auto-calculates. After completing Sections I-IV, check the estimated average acre-feet of water applied to each crop-acre grown.</i>

Section II-D will auto-calculate based on Sections II-B, II-C, and ranch acreage.

SECTION III: NITROGEN APPLIED WITH COMPOST & AMENDMENTS

Physical Acres Receiving Compost & Amendments	Nitrogen Applied in Compost & Amendments (total lbs)
[dropdown]	[dropdown]

Applications of nitrogen from compost and amendments (not fertilizers) made to improve soil properties, and/or as a source of nitrogen to ALL crops grown during the reporting period may be reported here. Alternatively, the nitrogen may be distributed accordingly between the crops and reported in Section IV. Do not report this information in both sections.

SECTION IV: NITROGEN APPLIED WITH FERTILIZERS & OTHER MATERIALS AND NITROGEN PRESENT IN THE SOIL (The Excel tool 'Nitrogen from_fertilizers' assists with calculations in this section)

Specific Crop(s) Grown and Harvested During Reporting Period (Select from List on Page 3)	Total Crop Acres	Nitrogen Present in Soil (lbs/crop-ac)	Nitrogen Applied in Fertilizers and Other Materials (lbs/crop-ac)	O/C	Additional Information	Specific Crop(s) Grown and Harvested During Reporting Period (Select from List on Page 3)	Total Crop Acres	Nitrogen Present in Soil (lbs/crop-ac)	Nitrogen Applied in Fertilizers and Other Materials (lbs/crop-ac)	O/C	Additional Information
1. Broccoli [dropdown]	75	50	300	C	[dropdown]	[dropdown]	[dropdown]	[dropdown]	[dropdown]	[dropdown]	[dropdown]
2. [dropdown]	[dropdown]	[dropdown]	[dropdown]	[dropdown]	[dropdown]	[dropdown]	[dropdown]	[dropdown]	[dropdown]	[dropdown]	[dropdown]
3. [dropdown]	[dropdown]	[dropdown]	[dropdown]	[dropdown]	[dropdown]	[dropdown]	[dropdown]	[dropdown]	[dropdown]	[dropdown]	[dropdown]
4. [dropdown]	[dropdown]	[dropdown]	[dropdown]	[dropdown]	[dropdown]	[dropdown]	[dropdown]	[dropdown]	[dropdown]	[dropdown]	[dropdown]
5. [dropdown]	[dropdown]	[dropdown]	[dropdown]	[dropdown]	[dropdown]	[dropdown]	[dropdown]	[dropdown]	[dropdown]	[dropdown]	[dropdown]
6. [dropdown]	[dropdown]	[dropdown]	[dropdown]	[dropdown]	[dropdown]	[dropdown]	[dropdown]	[dropdown]	[dropdown]	[dropdown]	[dropdown]
7. [dropdown]	[dropdown]	[dropdown]	[dropdown]	[dropdown]	[dropdown]	[dropdown]	[dropdown]	[dropdown]	[dropdown]	[dropdown]	[dropdown]
8. [dropdown]	[dropdown]	[dropdown]	[dropdown]	[dropdown]	[dropdown]	[dropdown]	[dropdown]	[dropdown]	[dropdown]	[dropdown]	[dropdown]
9. [dropdown]	[dropdown]	[dropdown]	[dropdown]	[dropdown]	[dropdown]	[dropdown]	[dropdown]	[dropdown]	[dropdown]	[dropdown]	[dropdown]
10. [dropdown]	[dropdown]	[dropdown]	[dropdown]	[dropdown]	[dropdown]	[dropdown]	[dropdown]	[dropdown]	[dropdown]	[dropdown]	[dropdown]

Provide the total pounds of nitrogen applied, on average, per crop-acre of each Specific Crop.
 Refer to full instructions for a) exceptions for crops with growing cycles greater than one year; and b) an example calculation for when there are multiple rotations of the same specific crop during the reporting period.

After Submittal

1. Receive form via email
2. Verify completeness and values
 - a. If needed, ask grower to check reported values
3. Excel macros used for automated tasks
 1. Import
 2. Mass calculations
 3. Analysis
 4. Outputs (graphs, tables, etc.)

Compliance Statistics

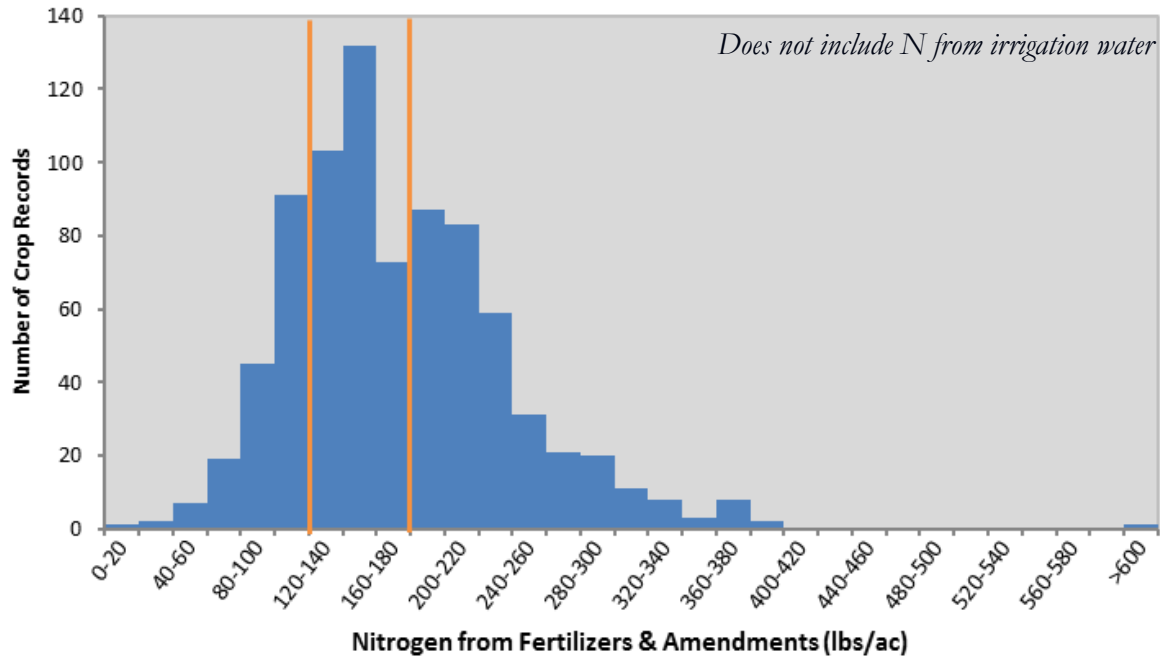
- Estimated time to complete report (after first year) is less than 1 hour
- High level of compliance

Due Date	Ranches Reporting	Compliance
Oct 1, 2014	>600	100%
Oct 1, 2015	>700	99%
Oct 1, 2016	>700	98%

Data Navigation

- Pivot tables, charts, and slicers (filters)
 - View ranch-level data
 - Then sort and filter to identify potential patterns across crops, counties, basins, etc.
- Connect to other submittals
 - eNOI, Annual Compliance Form
 - Groundwater data

Lettuce Records 2016 Nitrogen from Fertilizers & Amendments Only

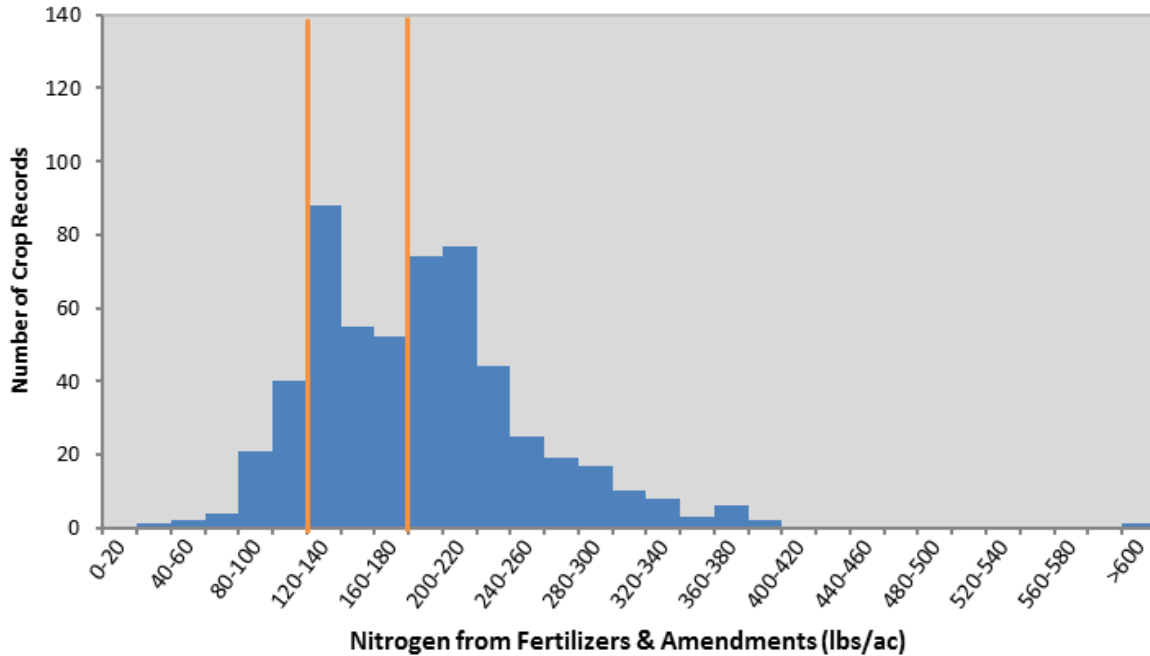


COUNTY

- Monterey
- San Benito
- San Luis Obispo
- Santa Barbara
- Santa Clara
- Santa Cruz

	Min	Max	Mean	Median	Records	Recs Above	% Above
All	0	626	169	159	733	311	42%
Mont	47	626	183	183	479	264	55%
S.Barbara	48	316	132	141	120	32	27%
SLO	0	291	137	109	42	8	19%
S.Clara	64	275	140	140	30	5	17%

Lettuce Records 2016 Nitrogen from Fertilizers & Amendments Only



COUNTY

Monterey

San Benito

San Luis Obispo

Santa Barbara

Santa Clara

Santa Cruz

	Min	Max	Mean	Median	Records	Recs Above	% Above
All	0	626	169	159	733	311	42%
Mont	47	626	183	183	479	264	55%
S.Barbara	48	316	132	141	120	32	27%
SLO	0	291	137	109	42	8	19%
S.Clara	64	275	140	140	30	5	17%

Automated Calculations

- Total nitrogen applied to ranch (fertilizers + water)
- Comparisons between application and uptake
- Residual nitrogen
- Crop-by-crop, ranch-by-ranch, then basin-by-basin
 - Increases ability to prioritize - calculation is more representative of the ranch

Benefits

- Positive feedback from regulated community regarding form features
 - Built-in calculator decreases time spent reporting
- Data sharing (other agencies, public, technical assistance providers)
- Efficient evaluation of compliance and reported values
 - Ability to navigate data and identify patterns

Questions