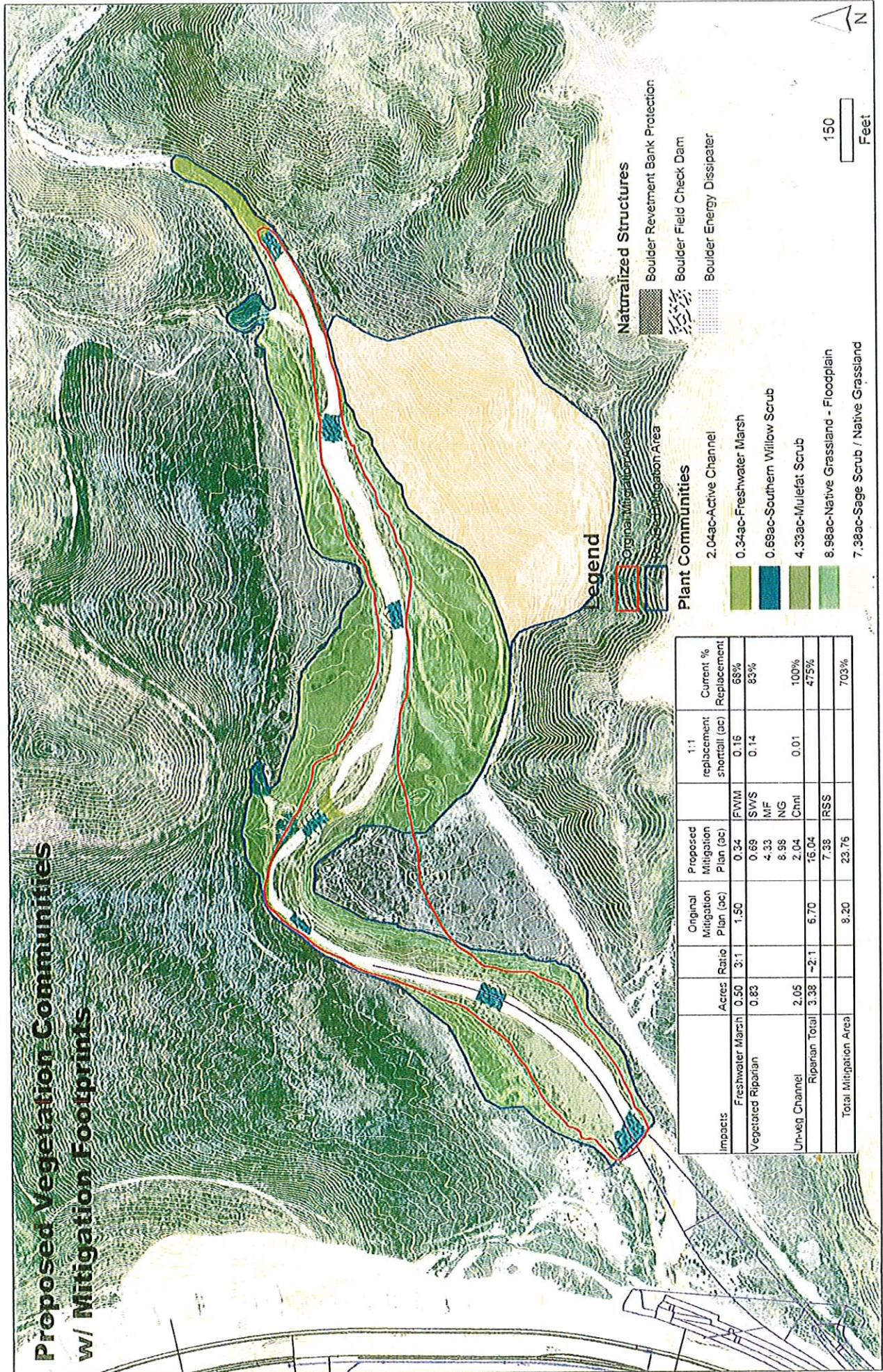


Appendix O

Proposed Vegetation Communities w/ Mitigation Footprints



Legend

- Naturalized Structures**
- Boulder Revetment Bank Protection
 - Boulder Field Check Dam
 - Boulder Energy Dissipater

- Plant Communities**
- Original Mitigation Area
 - Proposed Mitigation Area

- 2.04ac-Active Channel
- 0.34ac-Freshwater Marsh
- 0.69ac-Southern Willow Scrub
- 4.33ac-Mulefat Scrub
- 8.98ac-Native Grassland - Floodplain
- 7.98ac-Sage Scrub / Native Grassland

Impacts	Acres	Ratio	Original Mitigation Plan (ac)	Proposed Mitigation Plan (ac)	1:1 replacement shortfall (ac)	Current % Replacement
Freshwater Marsh	0.50	3:1	1.50	0.34	FWM 0.16	68%
Vegetated Riparian	0.83			0.69	SWS	83%
				4.33	MIF	
				8.98	NG	
Un-veg Channel	2.05			2.04	Chnl	100%
Riparian Total	3.38	-2:1	6.70	16.04	IRSS	475%
Total Mitigation Area			8.20	23.76		703%



2.06 AC - OPT2

2.06 AC - OPT1

8.2 AC

Murieta Hot Springs Road

Butterfield Stage Road

North Loop Road



10/19/2005



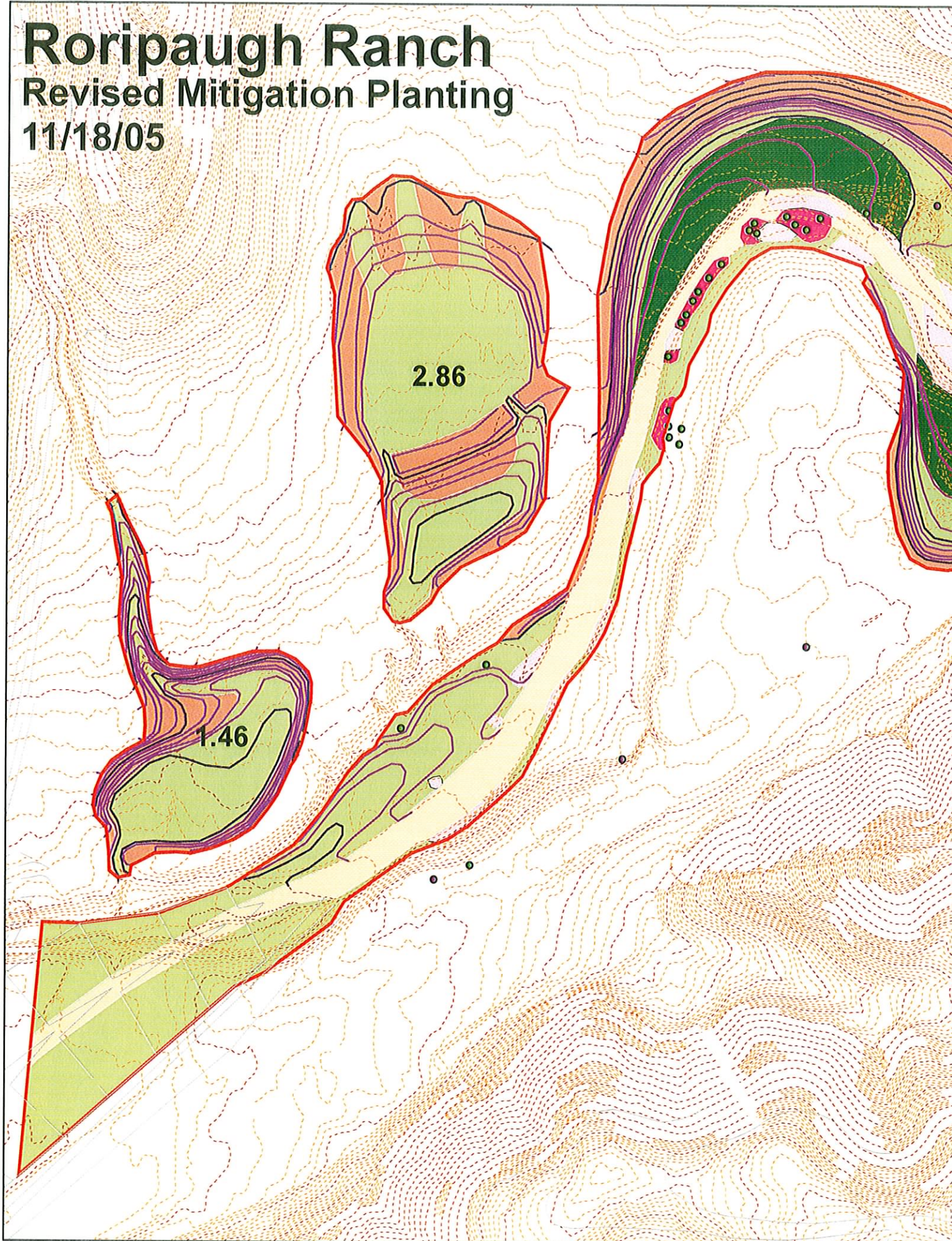
Roripaugh Ranch Wetland Mitigation Plan

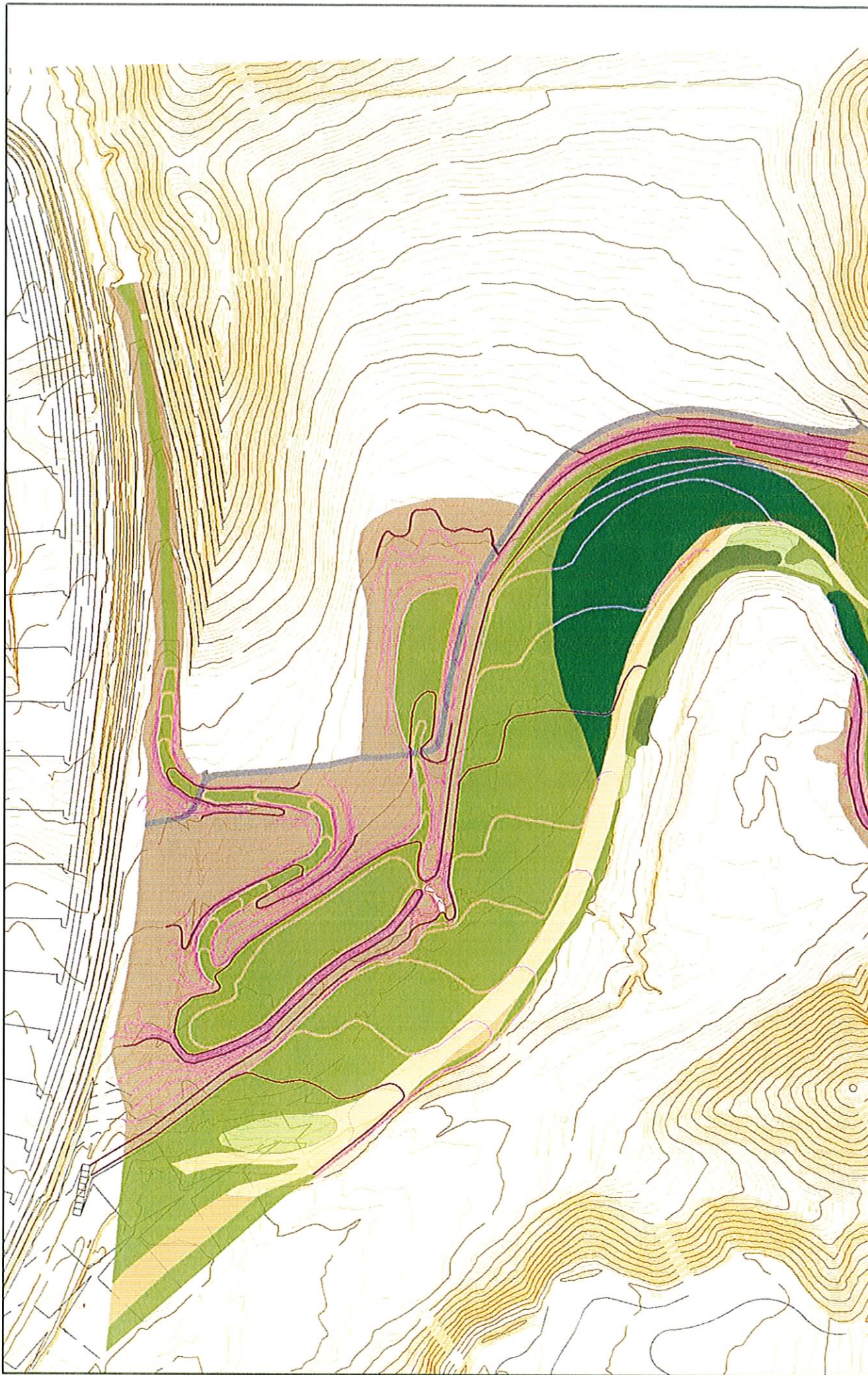


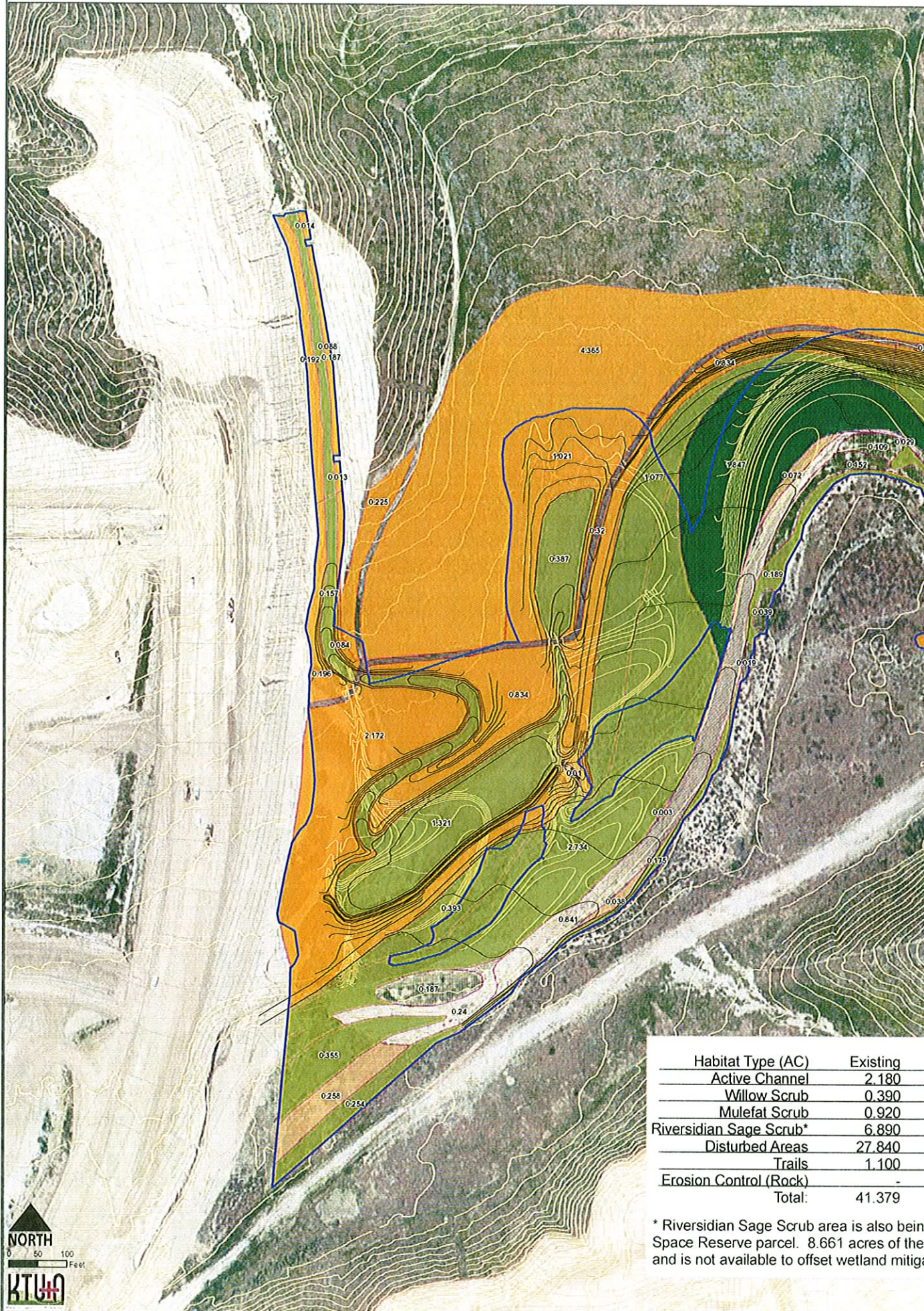
Roripaugh Ranch

Revised Mitigation Planting

11/18/05







Habitat Type (AC)	Existing
Active Channel	2.180
Willow Scrub	0.390
Mulefat Scrub	0.920
Riversidian Sage Scrub*	6.890
Disturbed Areas	27.840
Trails	1.100
Erosion Control (Rock)	-
Total:	41.379

* Riversidian Sage Scrub area is also being used as a Space Reserve parcel. 8.661 acres of this area is not available to offset wetland mitigation.





Legend

- Revised Grading 083106
- Development Topography
- Existing Contours 5ft Interval

- Mitigation Vegetation**
Total AC (Mitigation Credit AC)
- Active Channel - 2.152ac (-0.038ac)
 - RSS - 30.586ac (18.501ac)
 - Mulefat - 14.656ac (13.736ac)
 - Willow Scrub - 3.273ac (2.883ac)
 - Trail - 0.611ac
 - Rock - 0.007ac
 - Enhanced RSS - 4.045ac
 - Create

- Flood Control Channel**
- Access Road
 - Armorflex Bank
 - Armorflex Bed
 - Concrete Bank
 - Concrete Bed
 - Soft Bottom Channel
 - Soft Bottom Channel underlain by Armorflex
 - Unarmored Bank

8/31/2006

**Mitigation Vegetation
 (Proposed 2006 Amendment)**

Areas proposed for armorflex or
 riprap bed by WEST consultants



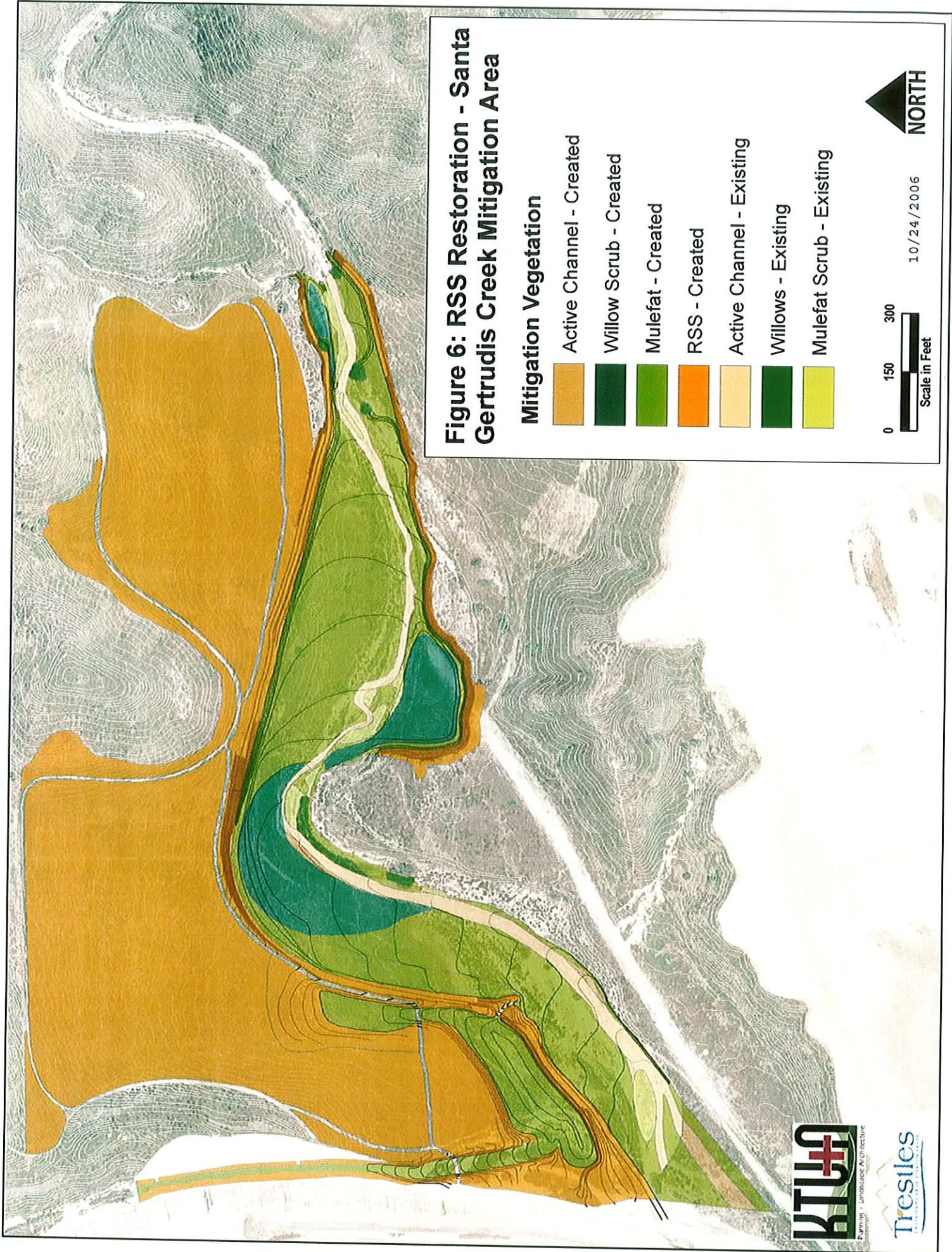
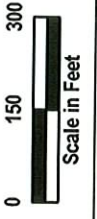


Figure 6: RSS Restoration - Santa Gertrudis Creek Mitigation Area

Mitigation Vegetation

- Active Channel - Created
- Willow Scrub - Created
- Mulefat - Created
- RSS - Created
- Active Channel - Existing
- Willows - Existing
- Mulefat Scrub - Existing



10/24/2006

