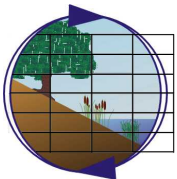
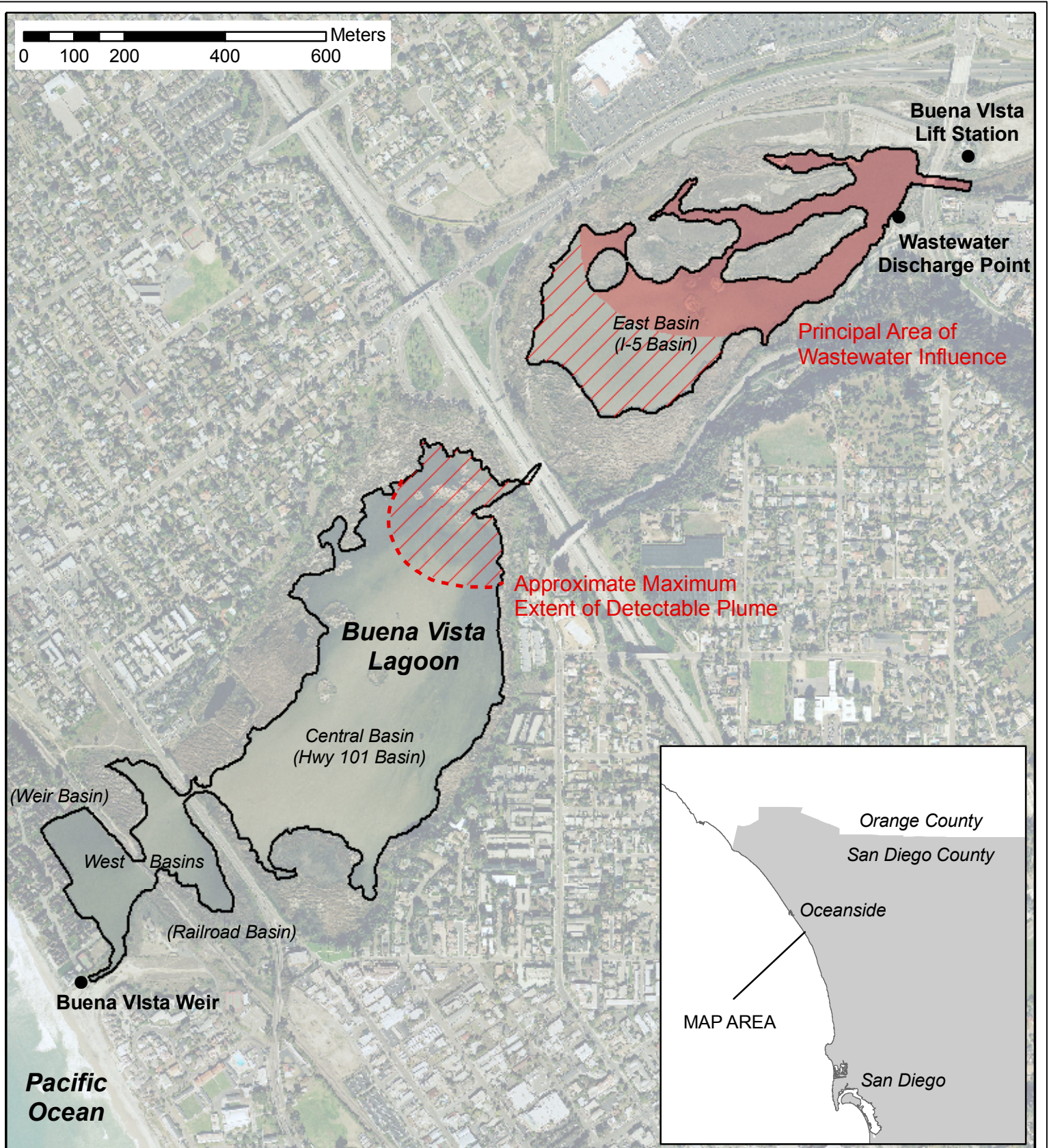


Item 16

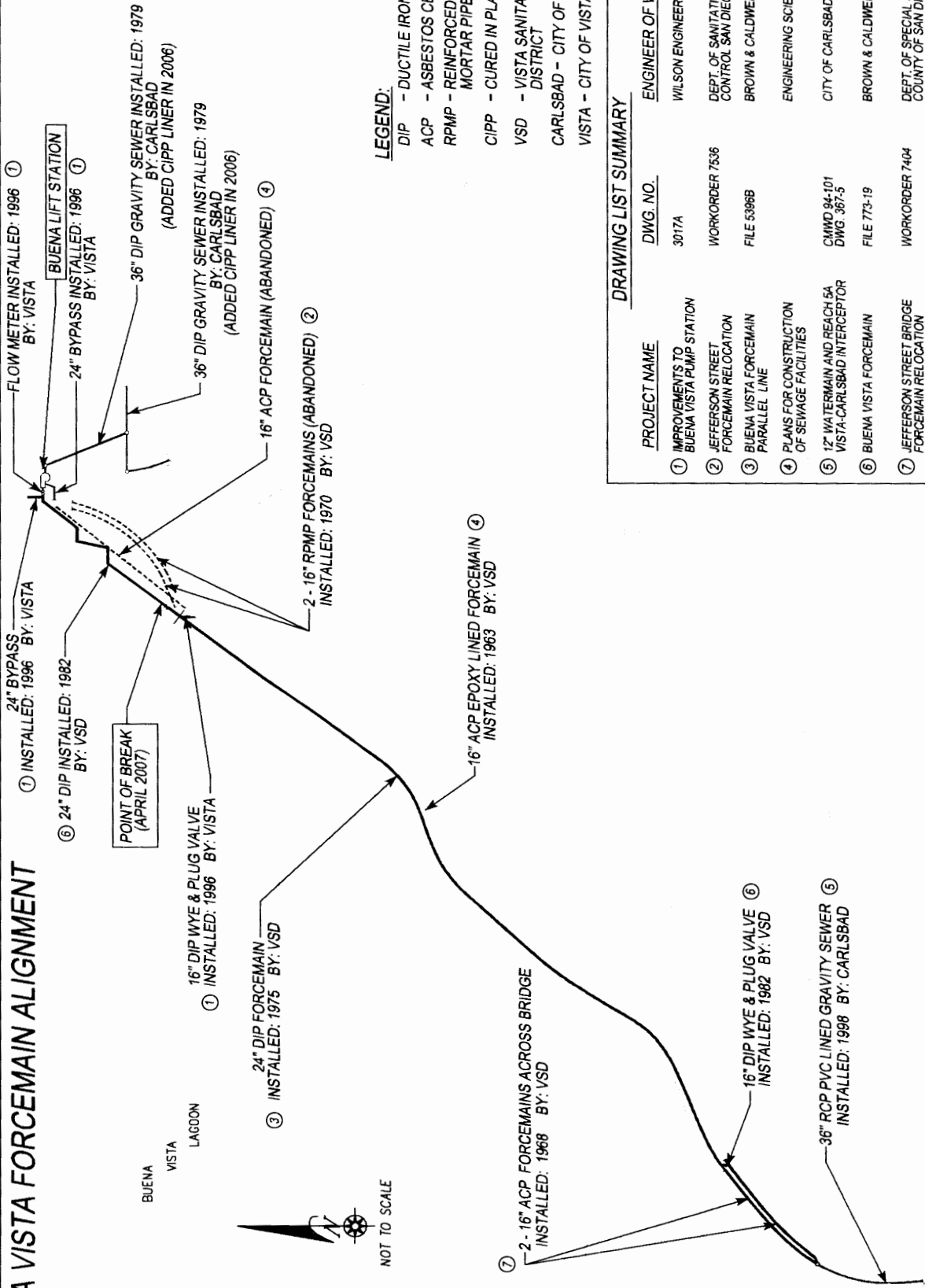




Incident Area Map
Buena Vista Sewer Force Main Discharge
April 2007

Figure 1

BUENA VISTA FORCEMAIN ALIGNMENT



NOT TO SCALE

LEGEND:

- DIP - DUCTILE IRON PIPE
- ACP - ASBESTOS CEMENT PIPE
- RPMP - REINFORCED PLASTIC MORTAR PIPE
- CIPP - CURED IN PLACE PIPE
- VSD - VISTA SANITATION DISTRICT
- CARLSBAD - CITY OF CARLSBAD
- VISTA - CITY OF VISTA

DRAWING LIST SUMMARY

PROJECT NAME	DWG. NO.	ENGINEER OF WORK
① IMPROVEMENTS TO BUENA VISTA PUMP STATION	3017A	WILSON ENGINEERING
② JEFFERSON STREET FORCEMAIN RELOCATION	WORKORDER 7536	DEPT. OF SANITATION & FLOOD CONTROL SAN DIEGO COUNTY
③ BUENA VISTA FORCEMAIN PARALLEL LINE	FILE 5396B	BROWN & CALDWELL
④ PLANS FOR CONSTRUCTION OF SEWAGE FACILITIES		ENGINEERING SCIENCE, INC.
⑤ 12" WATERMAIN AND REACH 5A VISTA-CARLSBAD INTERCEPTOR	CMWD 94-101 DWG. 367-5	CITY OF CARLSBAD
⑥ BUENA VISTA FORCEMAIN	FILE 773-19	BROWN & CALDWELL
⑦ JEFFERSON STREET BRIDGE FORCEMAIN RELOCATION	WORKORDER 7404	DEPT. OF SPECIAL SERVICES COUNTY OF SAN DIEGO