

EPA ROLE IN THE TIJUANA RIVER WATERSHED

SAN DIEGO REGIONAL WATER QUALITY CONTROL BOARD HEARING



JUNE 21, 2017



JUNE 21, 2017

COLLECTOR COLLAPSE IN JANUARY, 2017



IMPACTS THROUGHOUT SAN DIEGO COUNTY



Border Patrol agents said Tijuana sewage problem worse now than in previous decades



U.S. Border Patrol agent Christopher Harris stands in a culvert where sewage flows from Mexico into Goat Canyon in the United States on May 23, 2017. (Hayne Palmsur IV / Union-Tribune)



- Beach closures from Imperial Beach to Coronado.
- Letters from members of Congress and the State of California.
 - Economic damage
 - Health impacts to U.S. Border Patrol & U.S. Navy
- Citizen protests and anger.

143,000,000
GALLONS OF
RAW
SEWAGE
SPILLED
INTO THE PACIFIC
OCEAN FOR TWO WEEKS,
ALMOST
ENOUGH
TO FILL THE
ROSE BOWL STADIUM
TO THE BRIM ...TWICE!

**COME VENT YOUR
FRUSTRATION AT THE
INTERNATIONAL
BOUNDARY & WATER
COMMISSION CITIZEN
FORUM MEETING ON
MARCH 2 AT 6:30PM
AT THE TIJUANA
ESTUARY MEETING
ROOM, 301 CASPIAN
WAY, IMPERIAL BEACH
COME AT 5:30
TO SHOW YOUR
SUPPORT!**

made with TYPORAMA

BINATIONAL COOPERATION



- International Boundary and Water Commission
 - Under Department of State
 - 1944 Water Treaty
 - Minutes 283 and 320 on Tijuana



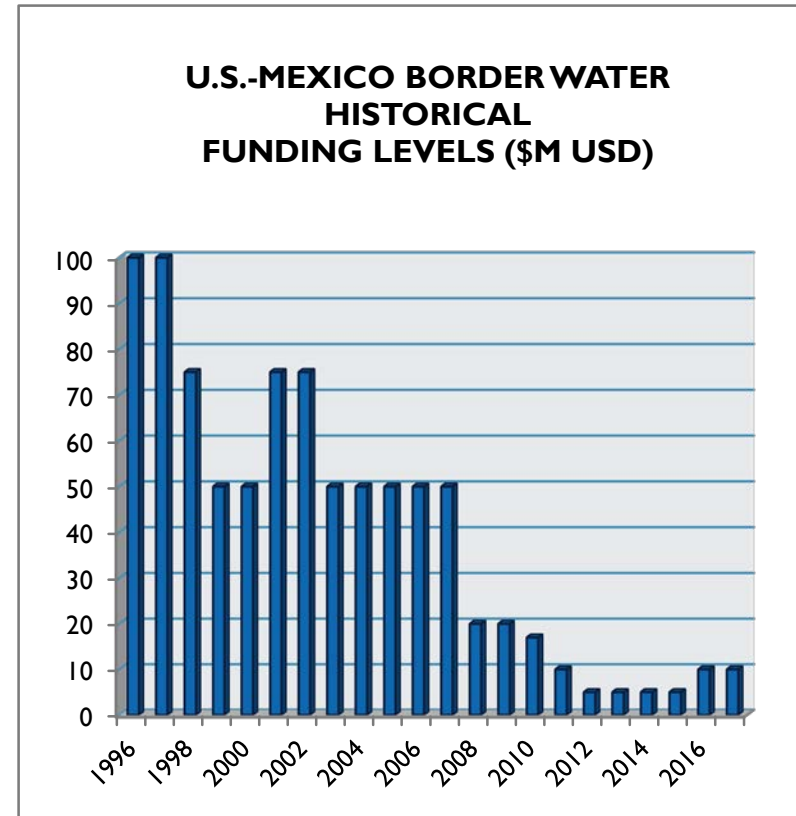
Signing of 1944 Treaty

- EPA-SEMARNAT
 - 1983 La Paz Agreement
 - Establishes increased transparency and stakeholder engagement (Border 2020 Program)
 - Annex I addresses Tijuana wastewater issue

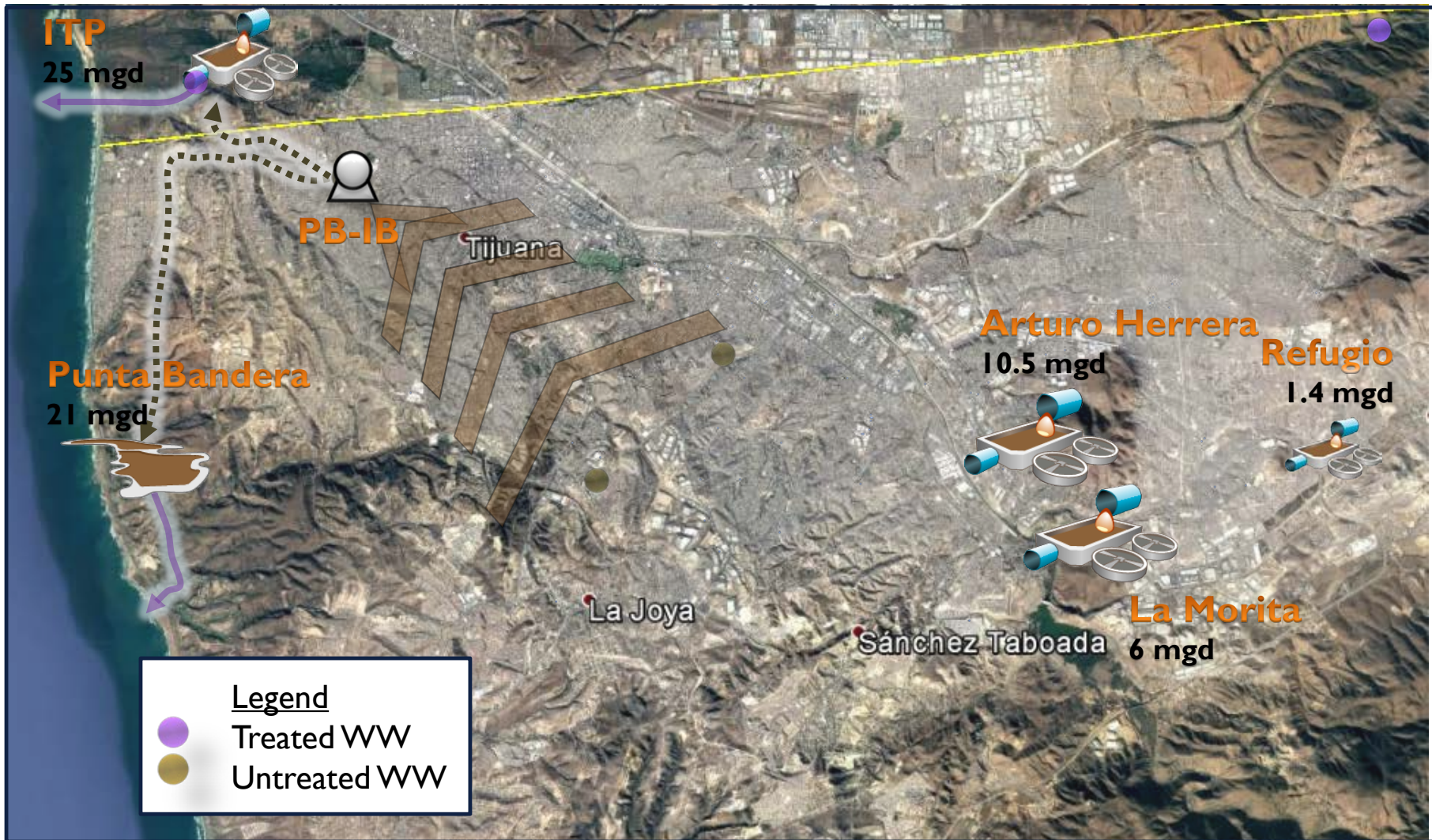


CONGRESSIONAL APPROPRIATION FOR BORDER WATER INFRASTRUCTURE

- International Treatment Plant
 - Treats Tijuana wastewater in U.S.
 - \$240 million in EPA funding
 - 13 mgd of sewage eliminated
- Border Water Infrastructure Program
 - Administered by North American Development Bank
 - Funds water infrastructure in U.S. and Mexico
 - Attracts Mexican funding to border
 - \$50 million for projects in Tijuana
 - 33,000 connections
 - 125 miles of sewer collectors



OVERVIEW OF TIJUANA WASTEWATER TREATMENT



OVERVIEW OF TIJUANA RIVER DIVERSION



Wet-weather: Tijuana River flows exceed 23 mgd) and PS CILA/Diverter is shut down

Tijuana River Diversion



(Looking south into Tijuana)

U.S. Naval A

U.S. MEX.

ITP
25 mgd

PS I/1a

PS CILA <23 mgd

Pump S

Jan spill
(7 mgd)

Playas De Tijuana

Tijuana

La Mesa

SAB WWTP
21 mgd

Tijuana

© 2016 Google

Data SIO, NOAA, U.S. Navy, NGA, GEBCO

© 2016 INEGI

Google e

2.28 mi

NEXT STEPS

Fix:

- Develop new ww infrastructure projects through BEIF program
- Work on “Wastewater and Reuse Strategic Plan” for Tijuana

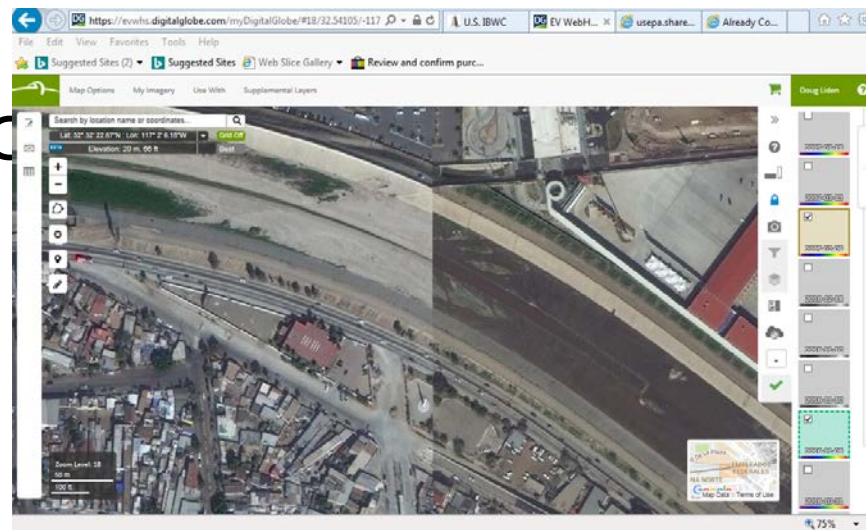
Study:

- Measure fate and transport, and level of contamination (Scripps, SCCWRP)
- Inspect Tijuana’s WW system (both physical and virtual)

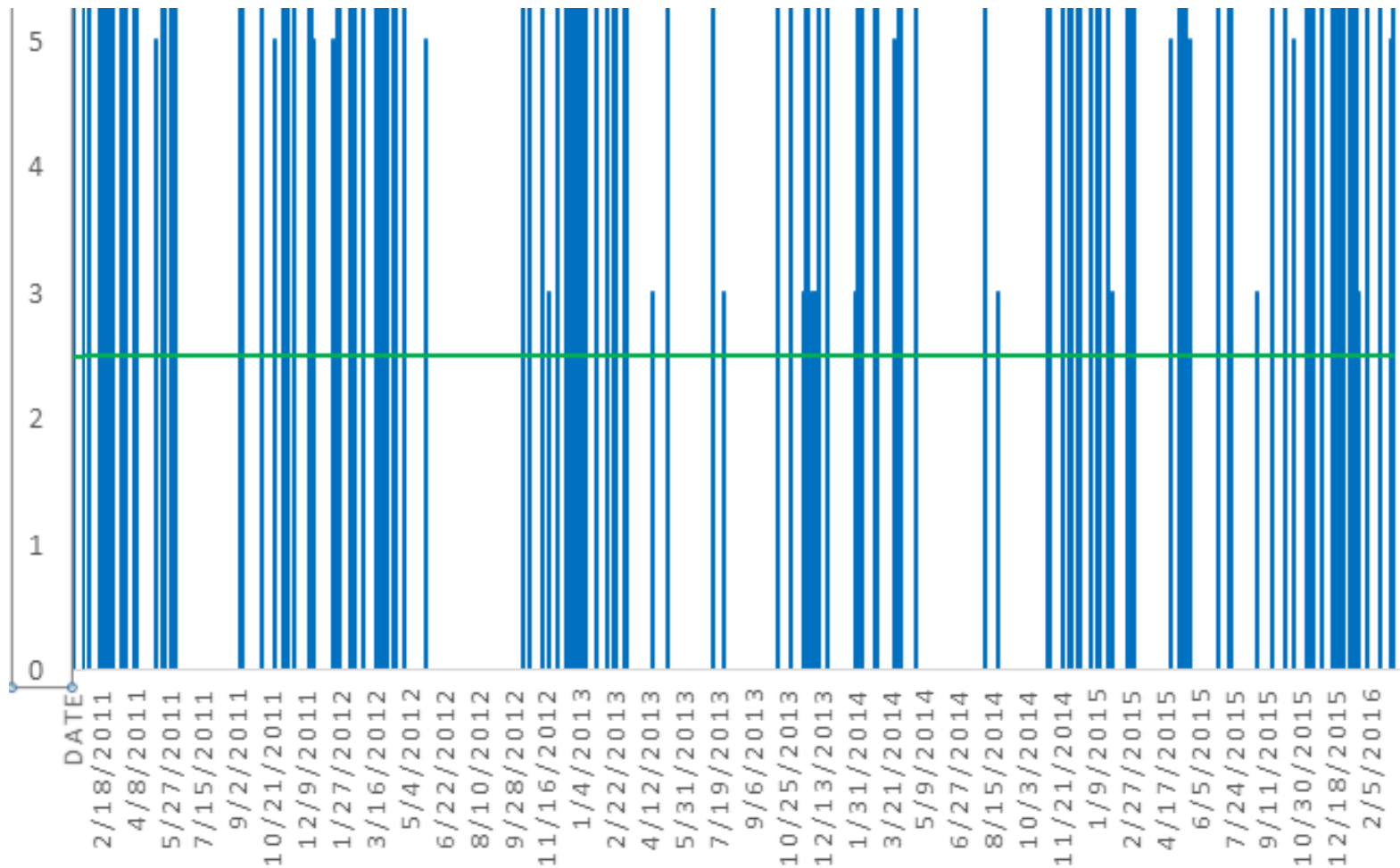
- Finalize EPA Sediment Model for GC

Communicate:

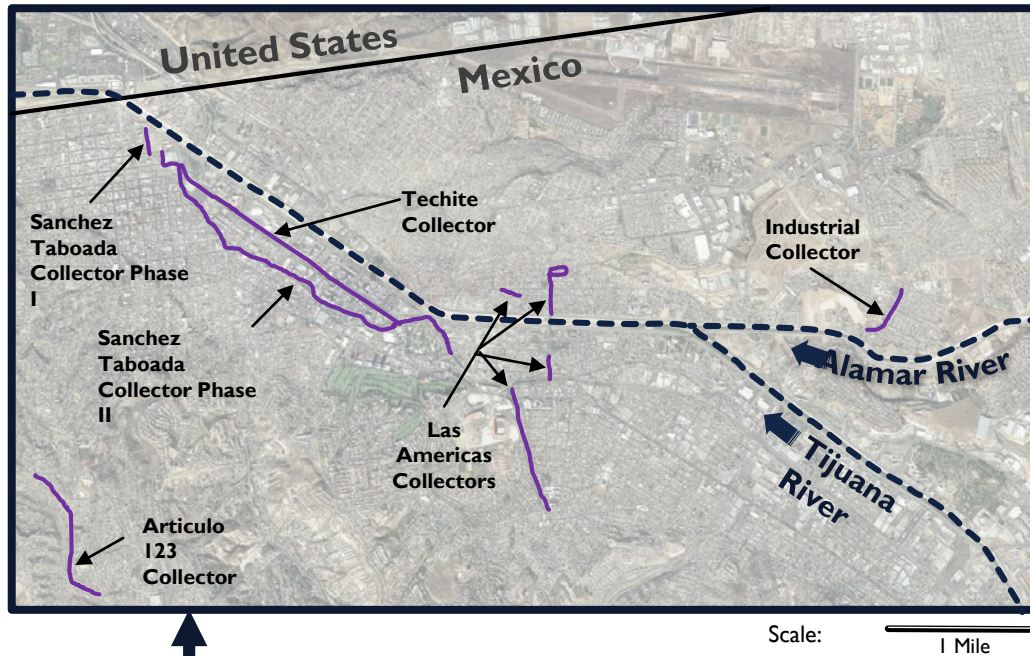
- Via Border 2020/Recovery Team, IBWC Minute 320 Workgroups
- Improve partnership w/ Border Patrol



COMPARISON ON RAINFALL FREQUENCY OF 2000-2005 VS 2011-2016 (SHORTER DRY SEASONS, OR NON-EXISTENT)

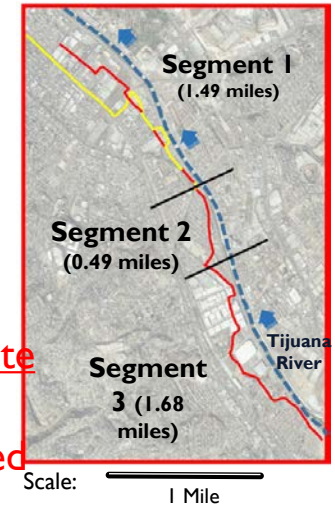


RECENT EPA INVESTMENT IN TIJUANA COLLECTORS



Phase I

- Nearly Complete
- Mexico: \$4M
- U.S.: \$3M
- 10 km repaired
- 30 manholes rehabilitate



Phase II- Poniente

- In Design
- Total estimated cost: \$3M

