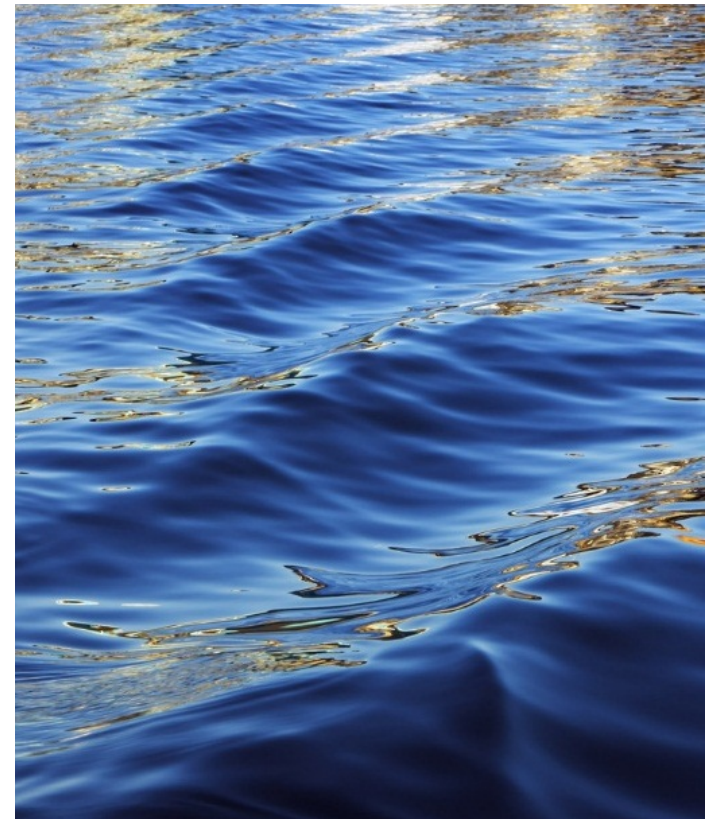




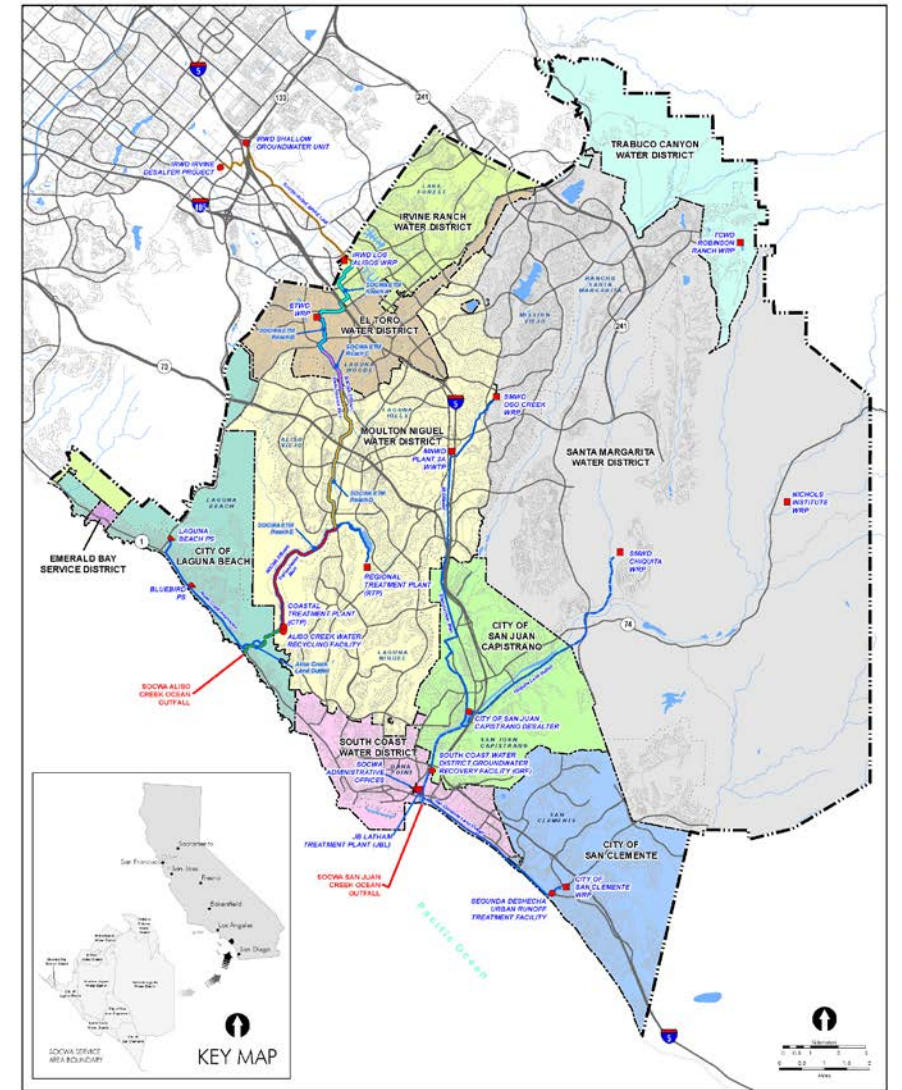
SOCWA:  
A Regional Partner  
in Environmental  
Quality



# SOCWA

- Regional Responsibility:
  - Promotes & Produces Sustainable Water Supplies
  - Oversees Water Quality Compliance
  - Brings Together a Broad Array of Stakeholders
- Regional Perspective:
  - Not a Water Utility
  - Ocean Discharger
  - Governance Structure Similar to a Think Tank
  - Responds to & Meets Member Agency Needs

## SOCWA SERVICE AREA MAP



<b>Member Agencies</b> City of Laguna Beach City of San Clemente City of San Juan Capistrano El Toro Water District Emerald Bay Service District Irvine Ranch Water District Moulton Niguel Water District Santa Margarita Water District South Coast Water District Trabuco Canyon Water District	<b>Facilities</b> ★ SOCWA Administrative Offices ● Desalter/Treatment Facility ● Pump Station ● Treatment Facility — Transmission Line — South In-line Brine Line — Land Outfall — Ocean Outfall	<b>SOCWA Effluent Transmission Line</b> ETL - Reach A ETL - Reach B ETL - Reach C ETL - Reach D ETL - Reach E Also Creek Land Outfall	- - - SOCWA Boundary Line - - - City Boundary - - - Member Agency Boundary Waterbody Creek/Stream
--	--	---	---

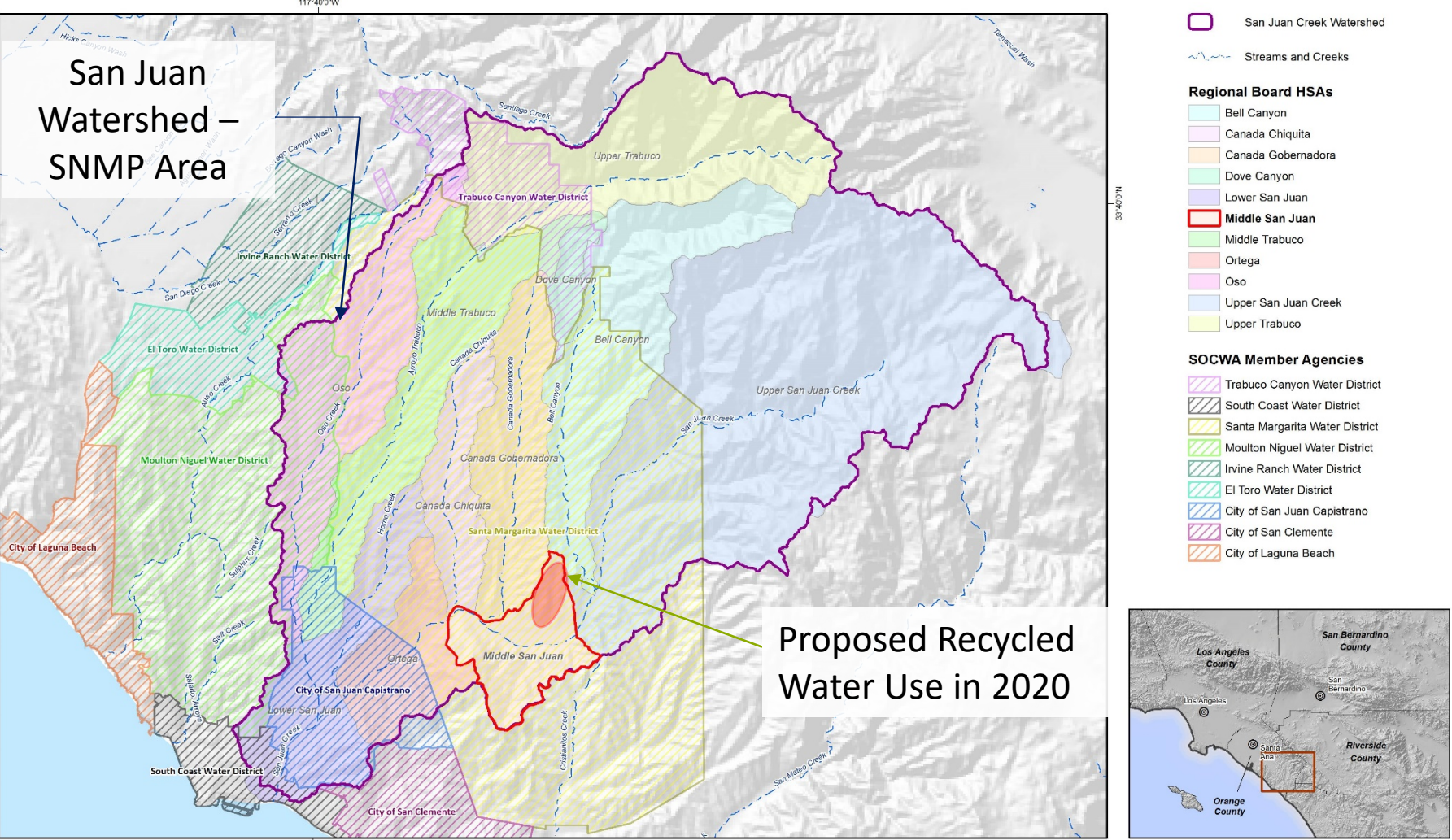
# SOCWA's Salt and Nutrient Management Plan (SNMP)

- Mandated by the RWQCB pursuant to the SWRCB Recycled Water Policy (2009)
- Addressed water quality in 15 different sub-basins within the San Juan Basin
- SOCWA's SNMP was completed & filed in 2014

## **SMWD's Perspective: Importance of Middle Trabuco & Middle San Juan Basin Plan Modifications**

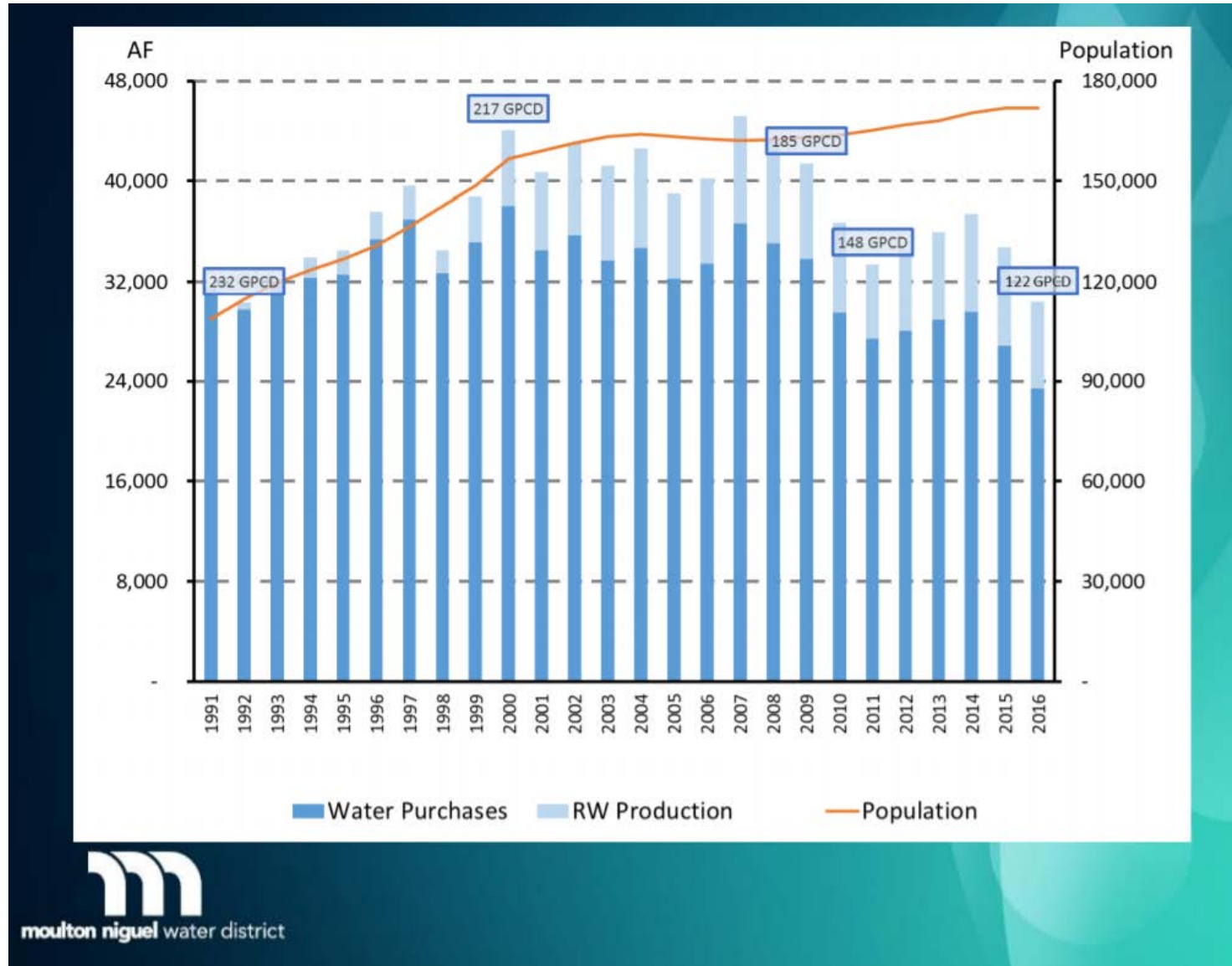
1. Consistency in groundwater quality objectives and existing groundwater quality
2. Production of a sustainable water supply that allows for recycled water use within the Middle San Juan and Middle Trabuco Basins consistent with the State's Recycled Water Policy
3. Protection of designated beneficial uses through establishment of groundwater quality objectives that are achievable, appropriate, and attainable

# AREA of SOCWA SNMP



MNWD:

# The Importance of Diversified Supplies



# Post 2014 SNMP Activities

## Non-Regulated Monitoring

Began watershed monitoring in Q4 2016 consistent with the RWQCB's *Framework for Monitoring and Assessment in the San Diego Region*

## Modeling & Analysis Updates

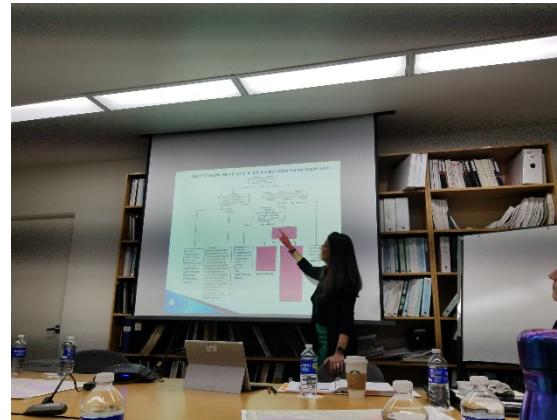
SOCWA and the Member Agencies will prepare technical studies, update the model & conduct antidegradation analysis

## Stakeholder Involvement

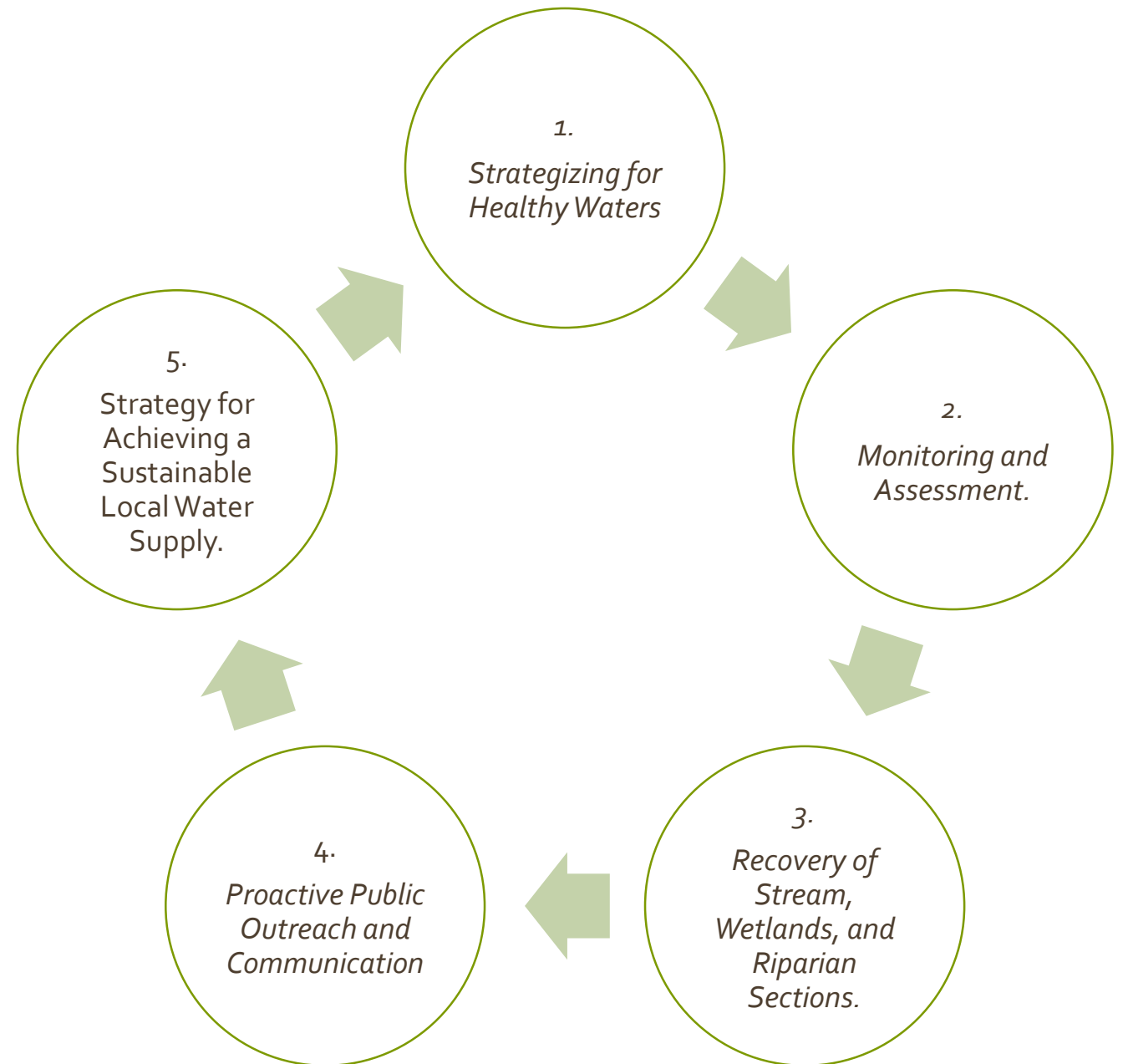
"The workshop was very helpful to get me up to speed on the complexities of the SNMP" March 13, 2018

"The workshop provided an understanding of the nexus between surface water and groundwater in the San Juan watershed." May 4, 2018

"Opportunity to share technical updates not normally provided to the public" May 7, 2018



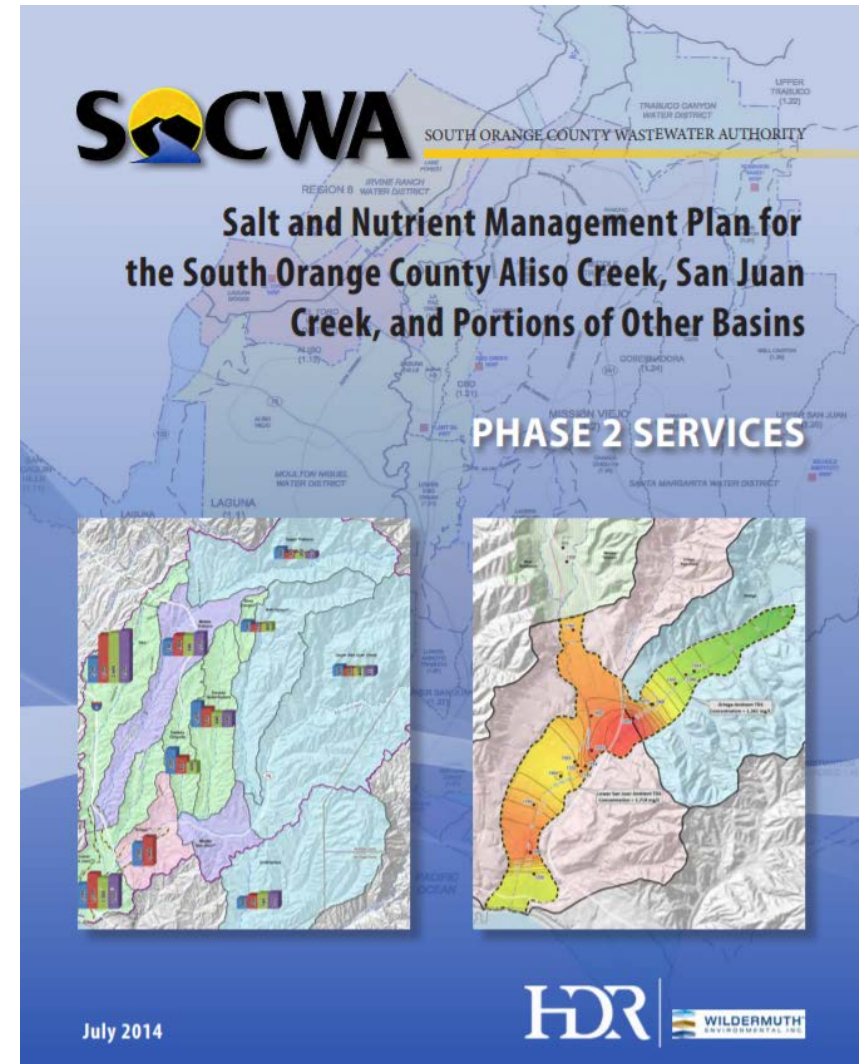
# SOCWA's Alignment with RWQCB Strategic Vision





## REQUESTED RWQCB ACTION:

Assign high priority to **SNMP-Related** Basin Plan modifications in the RWQCB triennial review process





Thank you!

