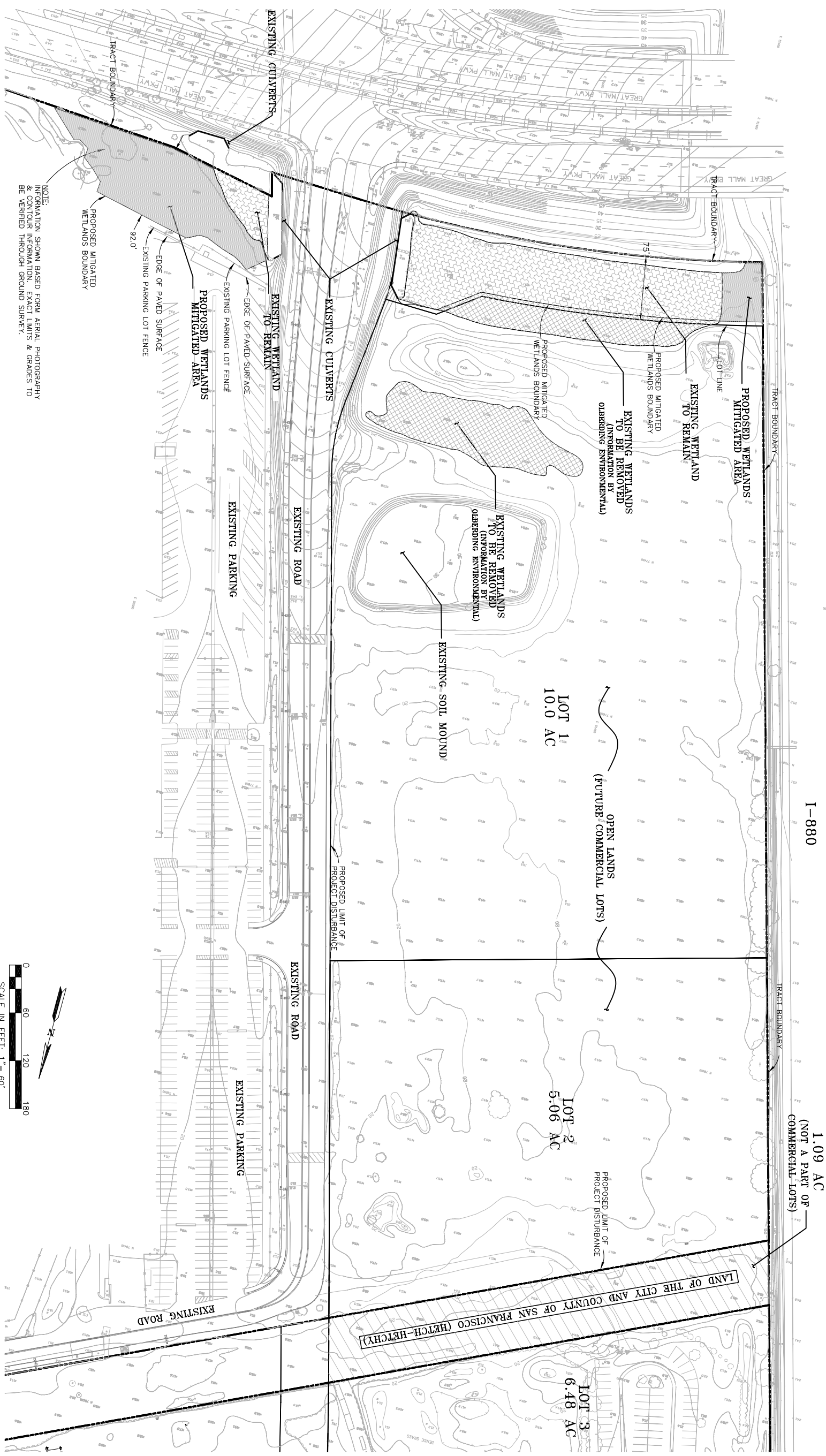


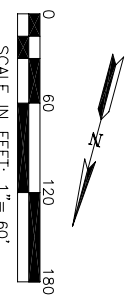
# EXHIBIT A - CONCEPTUAL WETLANDS AREAS FUTURE COMMERCIAL LOTS



| LEGEND |  |
|--------|--|
|        | EXISTING CULVERT                                   |
|        | TRACT BOUNDARY                                     |
|        | APPROXIMATE LIMITS OF PROJECT DISTURBANCE          |
|        | EXISTING WETLAND TO BE REMOVED (TOTAL = 0.48 AC)   |
|        | PROPOSED WETLAND MITIGATION AREA (TOTAL = 0.52 AC) |
|        | EXISTING WETLAND TO REMAIN (TOTAL = 0.72 AC)       |

\* LIMITS OF ALL EXISTING WETLANDS AREAS SHOWN PROVIDED BY OBERBERG ENVIRONMENTAL ELECTRONIC FILE RECEIVED BY RJA ON 11/16/04

NOTE:  
INFORMATION SHOWN BASED FROM AERIAL PHOTOGRAPHY & CONTOUR INFORMATION. EXACT LIMITS & GRADES TO BE VERIFIED THROUGH GROUND SURVEY.



|                                  |      |    |                 |    |    |             |
|----------------------------------|------|----|-----------------|----|----|-------------|
| SHEET<br><b>1</b><br>OF 1 SHEETS | DATE | MK | SHEET REVISIONS | BY | CK | SCALE       |
|                                  |      |    |                 |    |    | 1" = 60'    |
|                                  |      |    |                 |    |    | DATE        |
|                                  |      |    |                 |    |    | MAY 2, 2004 |

EXHIBIT A  
CONCEPTUAL WETLANDS AREAS  
ELMWOOD  
MILPITAS, CALIFORNIA



**Ruggeri - Jensen & Associates**

REGISTERED PROFESSIONAL ENGINEERS  
8055 CAMINO ARROYO • GILROY, CA 95020  
PHONE: (408) 848-0300 • FAX: (408) 848-0302