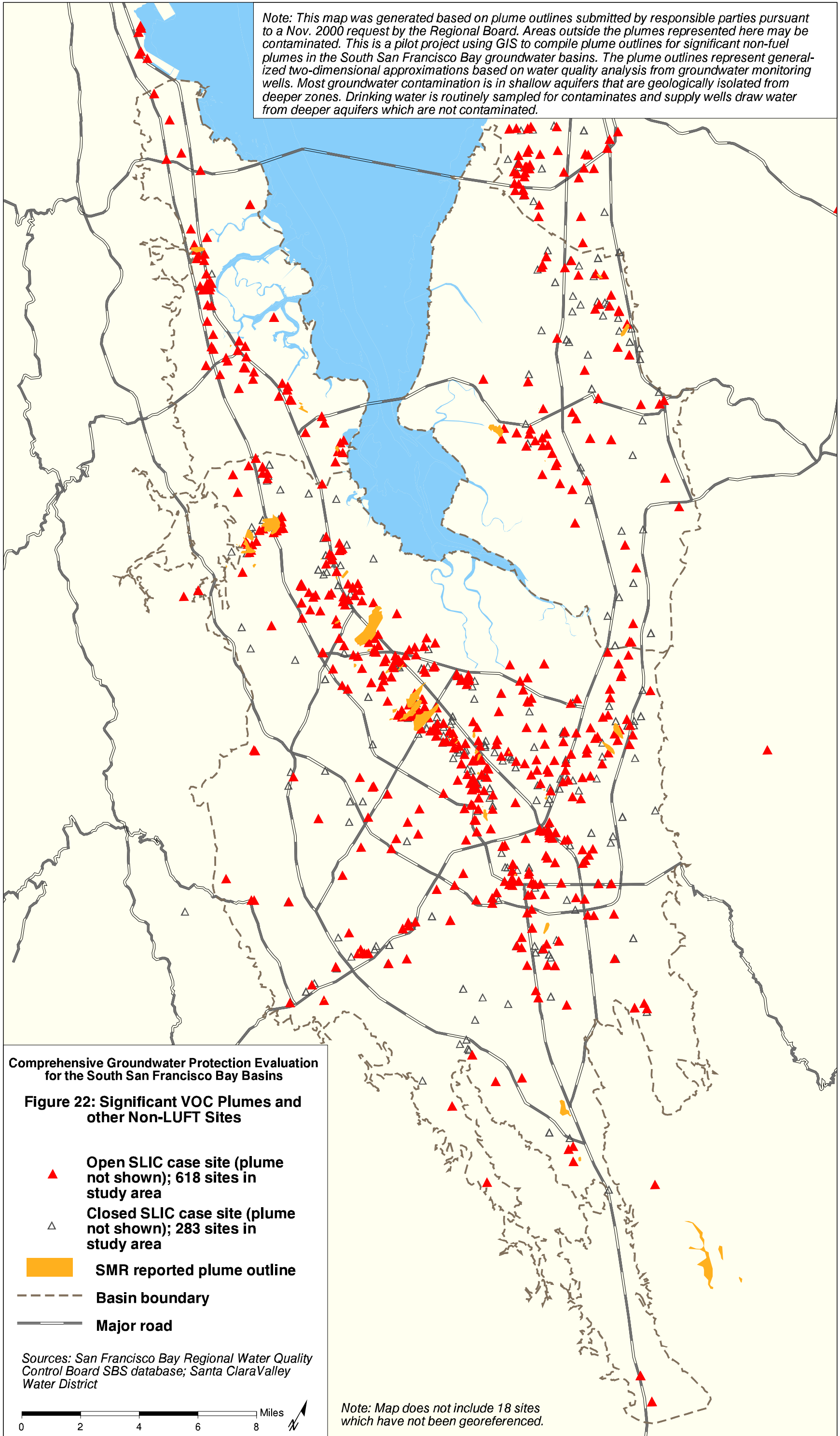


Note: This map was generated based on plume outlines submitted by responsible parties pursuant to a Nov. 2000 request by the Regional Board. Areas outside the plumes represented here may be contaminated. This is a pilot project using GIS to compile plume outlines for significant non-fuel plumes in the South San Francisco Bay groundwater basins. The plume outlines represent generalized two-dimensional approximations based on water quality analysis from groundwater monitoring wells. Most groundwater contamination is in shallow aquifers that are geologically isolated from deeper zones. Drinking water is routinely sampled for contaminants and supply wells draw water from deeper aquifers which are not contaminated.



Comprehensive Groundwater Protection Evaluation for the South San Francisco Bay Basins

Figure 22: Significant VOC Plumes and other Non-LUFT Sites

- ▲ Open SLIC case site (plume not shown); 618 sites in study area
- △ Closed SLIC case site (plume not shown); 283 sites in study area
- SMR reported plume outline
- - - Basin boundary
- Major road

Sources: San Francisco Bay Regional Water Quality Control Board SBS database; Santa Clara Valley Water District



Note: Map does not include 18 sites which have not been georeferenced.