

Los Angeles River Existing and Future Conditions: Instream Flow Needs



State Water Board Meeting
November 8, 2017

Division of Water Rights

Purpose

- 1) Summarize the demand for limited water resources of the Los Angeles River and other Southern California rivers;
- 2) Provide updates on recycled water programs, water supply augmentation and river planning efforts;
- 3) Discuss the need to balance various beneficial uses

Agenda

1) **State Regulatory Roles**

- Overview of the Los Angeles River, Water Rights Role - Sean Maguire, Division of Water Rights
- NPDES permitting – Deb Smith/Cris Morris, Los Angeles Regional Board
- Basin Plan Beneficial Uses – Shirley Birosik, Los Angeles Regional Board
- California Department of Fish and Wildlife – Erinn Wilson, Kelly Schmoker

Agenda, Cont.

2) Overview of Proposed Projects

- City of Burbank – Bill Mace
- City of Glendale – Richard Ruyle
- City of Los Angeles – Evelyn Cortez-Davis

3) The Future of the Los Angeles River

- LA Sustainable Water Project – Mark Gold, UCLA
- Los Angeles River Revitalization - Michael Affeldt, City of Los Angeles

4) Public Comment

Overview of the Los Angeles River and Water Rights Role

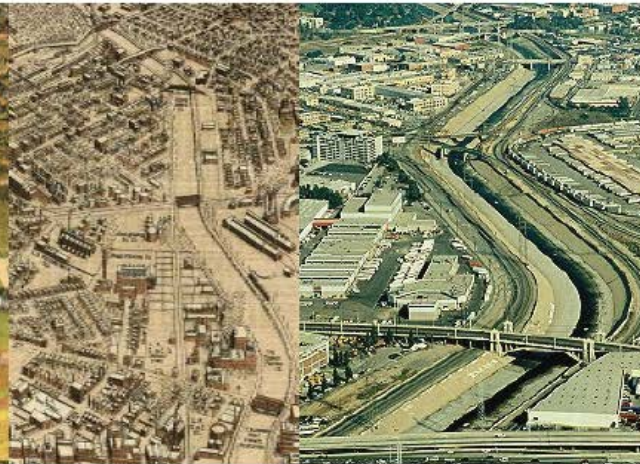
The Los Angeles River - Past to Present



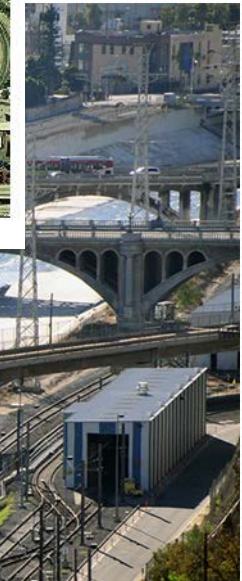
1868 (A. L. Bankcroft and Co.)



1894 (Semi-tropic Homestead Company)



1909 (Birdseye View Publishing Company) 2006 (City of Los Angeles)



Los Angeles River

- 824 square mile watershed
- Upper watershed is open space or forested land
- Lower watershed is highly urbanized
- Mixture of concrete lined channel and “soft bottom” sections



Los Angeles River Water Sources



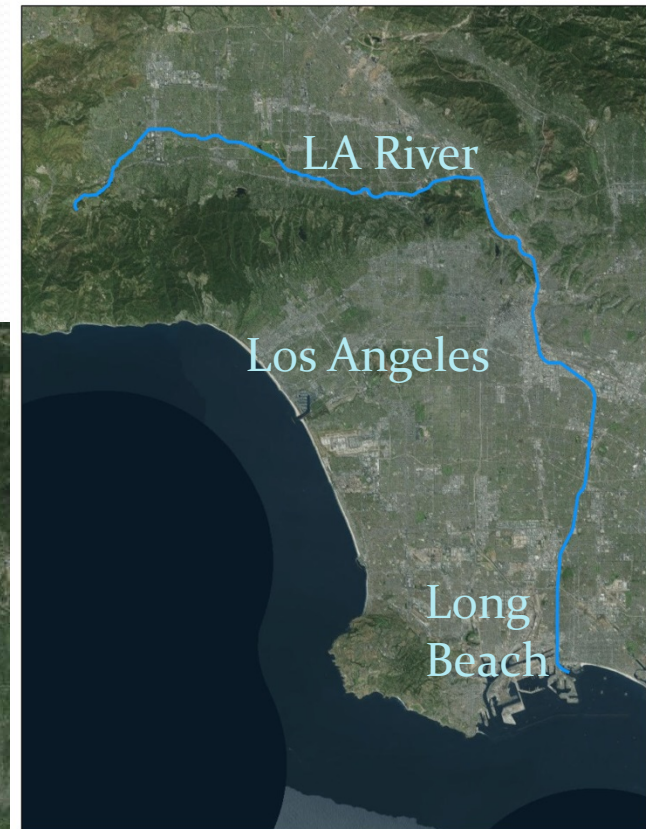
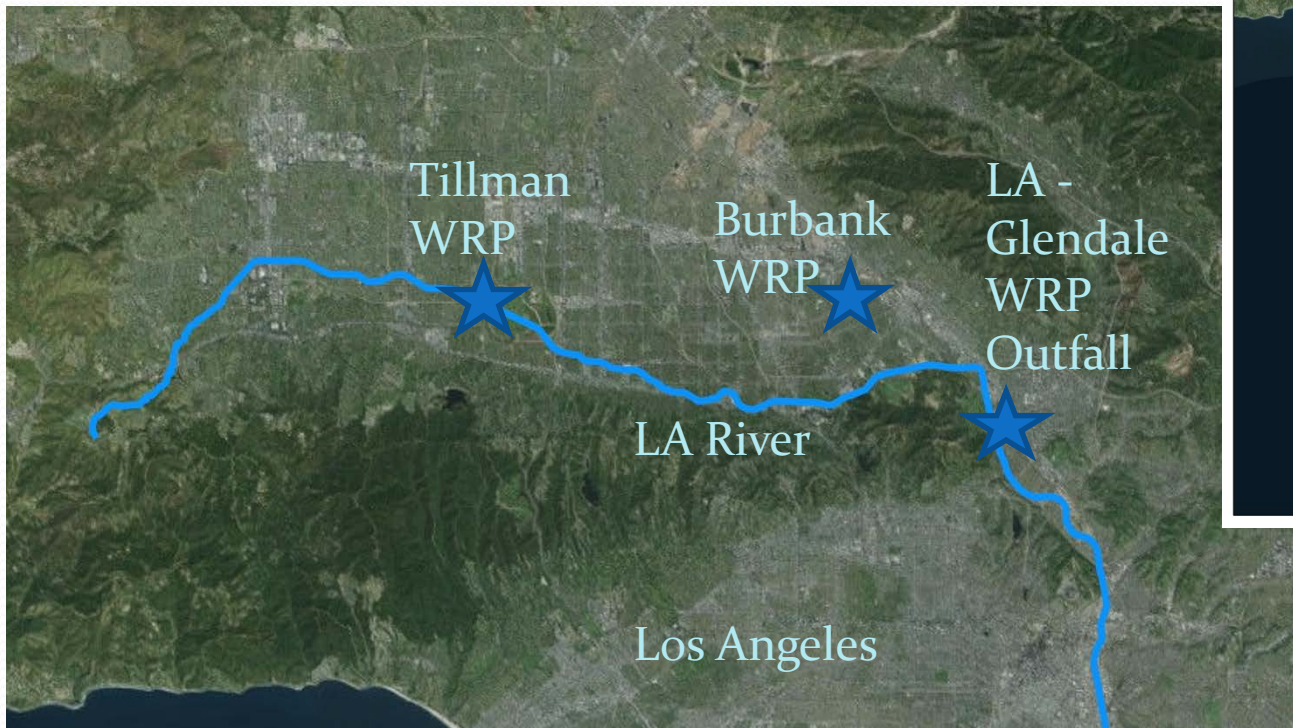
Wet Season Flows

- Rainfall
- Wastewater Treatment Plant Discharges
- Storm water Runoff
- Groundwater “upwelling”

Dry Season Flows

- Wastewater Treatment Plant Discharges
- Urban Runoff
- Groundwater “upwelling”

Wastewater Discharges to the Los Angeles River



Water Recycling

- Water recycling or reuse can reduce flow to a water source
- When flow is reduced to a water source for reuse in a new location, a wastewater change petition is required to be submitted to the State Water Board.
- An example of reuse is landscape irrigation for parks or golf courses.

Water Code Section 1211

- “(a) Prior to making any change in the point of discharge, place of use, or purpose of use of treated wastewater, the owner of any wastewater treatment plant shall obtain approval of the board for that change. The board shall review the changes pursuant to the provisions of Chapter 10 (commencing with Section 1700) of Part 2 of Division 2.
- (b) Subdivision (a) does not apply to changes in the discharge or use of treated wastewater that do not result in decreasing the flow in any portion of a watercourse.”

Current Wastewater Change Petitions in Process

Petitioner	Petition ID – WW#	Date Received	Date Noticed	Status
City of Burbank	WW0019 (1993 Order amended to expand place of use), WW0091	5/18/16, superseded 3/21/17 to separate petitions	3/29/17	In process
City of Glendale	WW0097	9/30/16	4/20/17	In process

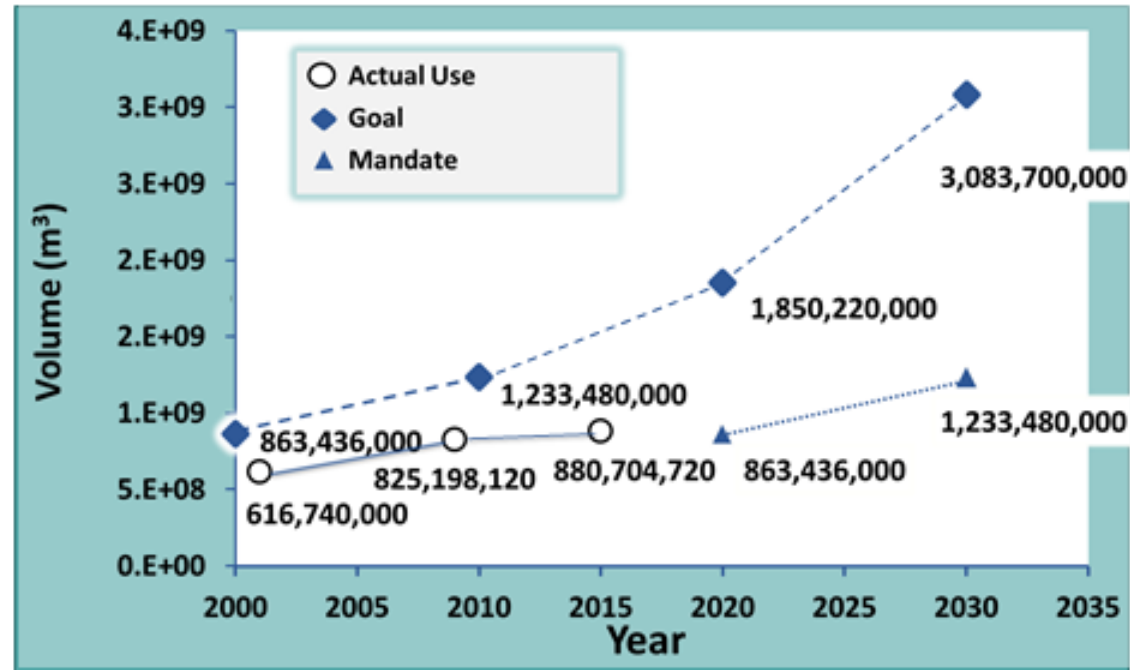
Other Pending Wastewater Change Petitions in Southern California

- Santa Ana River Watershed
 - City of Rialto
 - San Bernardino Municipal Water Department
- San Gabriel River Watershed
 - Sanitation Districts of Los Angeles County - Whittier Narrows WRP
 - Sanitation Districts of Los Angeles County - San Jose Creek WRP

2013 Recycled Water Policy

Promote the use of recycled water while protecting public health and water quality through consistent, streamlined permitting of recycled water projects

Recycled Water Use and Goals



Source: CWC (California Water Plan), Recycled Water Policy (RWP)
Baseline: 2001 Survey, 2009 Survey, 2013 Survey