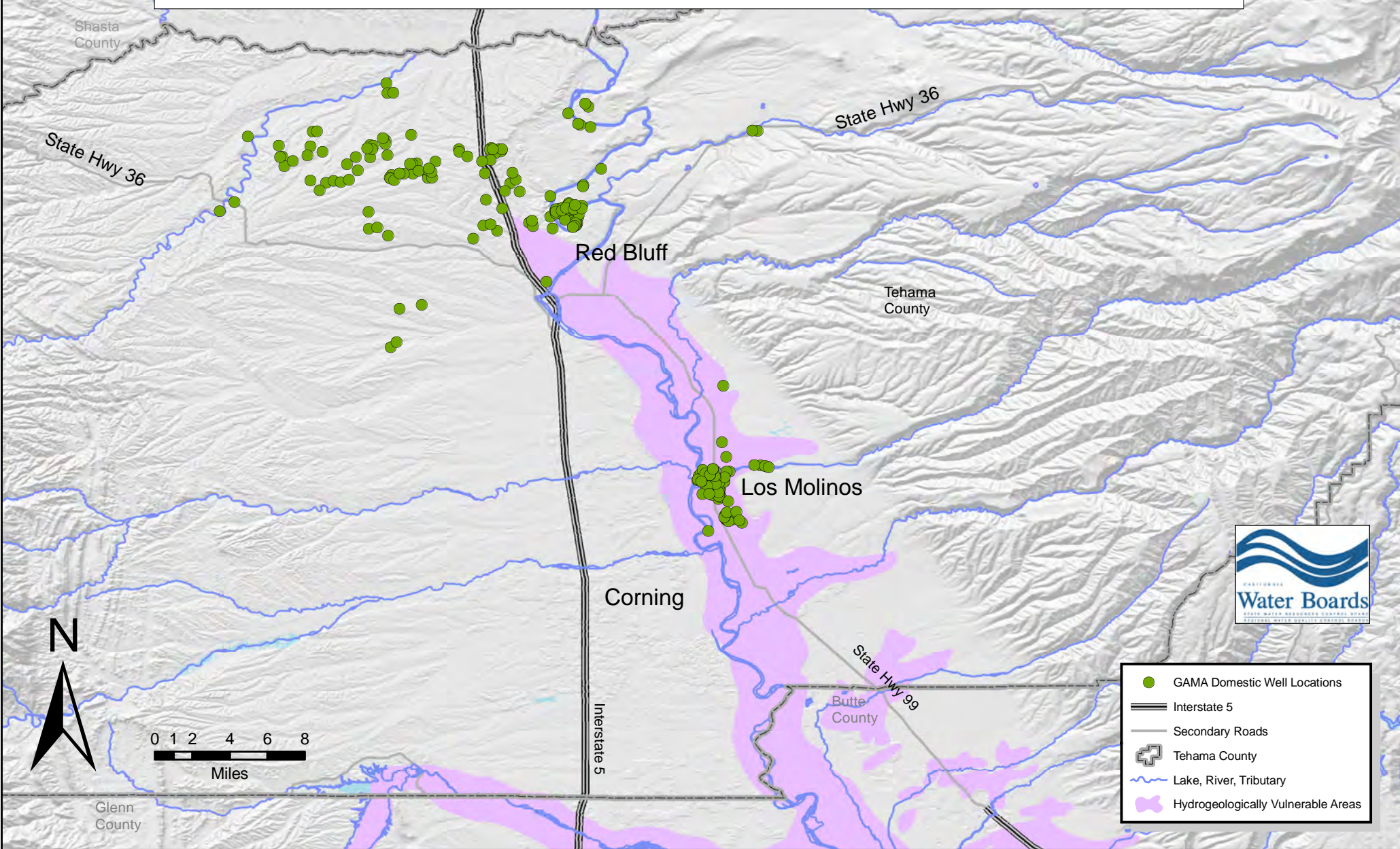


# Groundwater Ambient Monitoring and Assessment (GAMA) Domestic Well Project Tehama County Focus Area, 2005 Domestic Well Locations



- GAMA Domestic Well Locations
- == Interstate 5
- Secondary Roads
- ⊕ Tehama County
- ~ Lake, River, Tributary
- Hydrogeologically Vulnerable Areas