

1. **Annual Report**

a. Executive Summary

The Mosquito & Vector Management District of Santa Barbara County (District) complied with the applicable components of the General NPDES Permit for Biological and Residual Pesticide Discharges from Vector Control Applications (General Permit). The District is a member of the Mosquito and Vector Control Association of California (MVCAC) NPDES Permit Coalition and the Coalition conducted all required chemical and physical monitoring. The results of the Coalition's monitoring will be included in the Coalition Annual Report that will be sent separately to the SWRCB and Regional Boards.

The District made 694 applications to waters of the U.S. during the 2012 calendar year. These are mapped in Attachment A. The log of these applications can be found in Attachment B. The District performed Visual Monitoring of >10% of individual application sites identified as "Waters of the US" until July 2012. The visual monitoring completed by the District in the first half of the year found that there is no observable change in water quality between the background, event, and post event time periods-(see monitoring log sheets – Attachment C). The SWRCB notified the permit holders in a letter to MVCAC dated July 13, 2012 that because the visual monitoring requirements were "interfering with the need for maximal efficient application to adequately protect human health from vector-borne diseases like West Nile Virus," that the visual monitoring was no longer required for individual Districts. Prior to that time the District had been and continued to follow the guidelines of its Pesticide Application Plan (PAP).

b. Summary of Monitoring Data

The District began the year by complying with the visual monitoring requirements of the permit. See Footnote 1 of Tables C-1 and C-2 in Amended Water Quality Control Order No. 2011-0002-DWQ, General Permit No. CAG990004. Visual monitoring required a tremendous amount of time to accomplish including a number of revisits to specific sites to gather the necessary information. Most critically, time spent revisiting old sites caused delay in getting to new sites. Given the short lifecycle of the mosquito, this greatly exacerbated the task of looking for and treating mosquito breeding sites early in their lifecycle when treatment is more concentrated and effective. Recognizing the need of mosquito control districts to quickly find and treat mosquito breeding sites to prevent the spread of disease, such as West Nile virus, the SWRCB issued a

letter to MVCAC dated July 13, 2012 that indicated the visual monitoring requirement would no longer be required of individual Districts.

Per the instructions in the letter, the Coalition will provide information on the incidence of West Nile Virus and other similar public health threats in the Coalition's annual report.

For the reasons stated above, the District did not collect visual monitoring data for the remainder of 2012.

c. BMP Identification

BMP's utilized by the District are outlined in the District's PAP. These include; emphasis on reducing mosquito breeding habitat through non-chemical means, training employees to prevent spills and applying appropriate amount of chemical in each treatment area, as well as calibration of application equipment and use of biology based assessment for determining treatment thresholds.

d. Violation Discussion

The District did not violate any conditions of the General Permit.

e. Map of Applications

See Attachment A

f. Log of Applications made to Waters of the U.S.

Attachment B includes monthly reports of all application data on the covered application areas.

g. General Information on Applications

Attachment B includes information on dosage, concentration and quantity of each pesticide used which are derived from the individual pesticide labels.

h. Visual Monitoring Data

Visual Monitoring Data has been submitted to the State Water Board in the provided Monitoring Database Form -Attachment C.

i. BMP, PAP, Monitoring Program Recommendations

No recommendations are being proposed to improve the current BMP's, PAP, or monitoring plan. Any changes to the Coalition Monitoring Plan will be highlighted in the Coalition Monitoring Annual Report.

j. Pesticide Application Log made to Waters of the U.S.

A representation of the pesticide application log is contained in Attachment B

2. **Updated PAP Components**

N/A

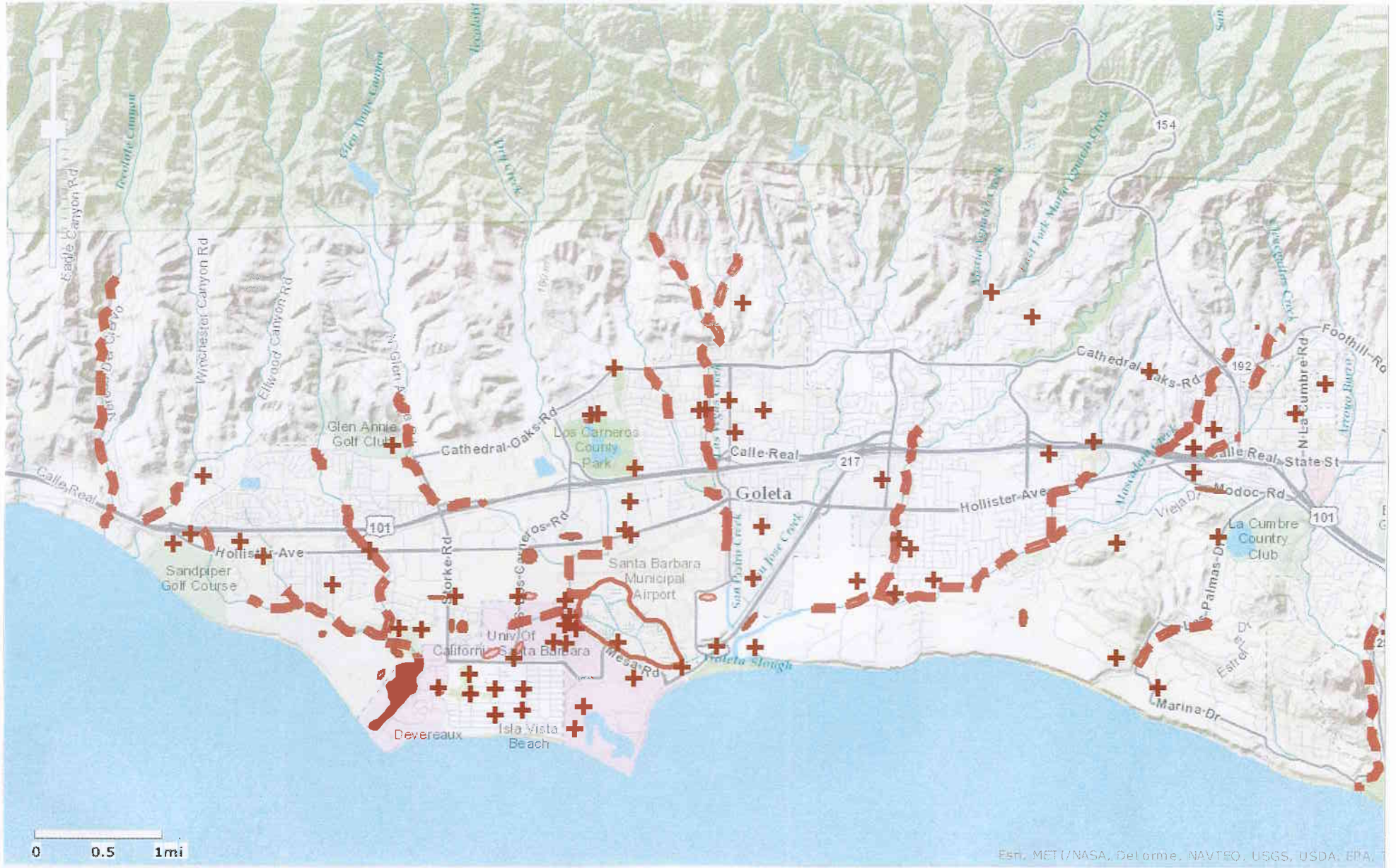
3. **Self Monitoring Reports**

N/A

4. **Monitoring Reports**

The Coalition Monitoring Annual Report will summarize all physical measurements and chemical monitoring done for 2011 and 2012.

Mosquito and Vector Management District of Santa Barbara County
Larvicide Treatments to Waters of the United States (2012)



Goleta, UCSB, Hope Ranch

**Mosquito and Vector Management District of Santa Barbara County
Larvicide Treatments to Waters of the United States (2012)**



Santa Barbara, Montecito, Summerland

Mosquito and Vector Management District of Santa Barbara County
Larvicide Treatments to Waters of the United States (2012)



Summerland, Carpinteria

**Mosquito and Vector Management District of Santa Barbara County
Larvicide Treatments to Waters of the United States (2012)**



Pismo Beach and Oceano Dunes in San Luis Obispo County

**Mosquito and Vector Management District of Santa Barbara County
Larvicide Treatments to Waters of the United States (2012)**

Date	Location	City	Inspector	Material Applied	Amount
1/4/2012	3340 Richland Dr.--curbside drain @end of street	SB	Cram	Vectobac G	.5 lb
1/4/2012	Freshwater Marsh W. of Los Carneros Rd., on UCSB Storke Campus	UCSB	Schultz	Vectobac G	36.0 lbs
1/4/2012	Freshwater/brackish marsh E. of Los Carneros Rd., on UCSB Storke Campus	UCSB	Schultz	Vectobac G	.5 lb
1/5/2012	Arroyo Hondo Park (Mira Canon Lane x Carrillo St.)-drain outlet/creek	SB	Cram	Vectobac G	1.0 lb
1/5/2012	SB Zoo (500 Ninos Dr.)--ponds/ditches near Bird Refuge	SB	Cram	Vectobac G	2.0 lbs
1/10/2012	Drainage ditch on UCSB Campus near Pkng Lot 29	UCSB	Ibarra	Vectobac G	2.0 lbs
1/10/2012	Bioswales/Vernal pools on UCSB Campus, Manzanita Dorms	UCSB	Ibarra	Vectobac G	3.0 lbs
1/11/2012	Devereux Lagoon on Slough Rd.	UCSB	Ibarra	Vectobac G	57.0 lbs
1/12/2012	Creek/culvert at Fairview Ave. x Holiday Hill Rd.	Goleta	Schultz	Natular XRT	.176 lb
1/12/2012	Seasonal freshwater marsh on Laundry Rd., N. of Mesa Rd.	SBAIR	Ibarra	Vectobac G	.5 lb
1/12/2012	Bioswales on UCSB Campus at San Clemente Dorms	UCSB	Ibarra	Vectobac G	5.0 lbs
1/12/2012	Vernal Pools NW of oil storage tanks near Devereux lagoon	UCSB	Ibarra	Vectobac G	.3 lb
1/13/2012	Seasonal wetland at Willow Springs Rd.	Goleta	Sharp	Vectobac G	41.0 lbs
1/13/2012	Seasonal marsh S. of Hollister Ave, E. of Los Carneros Rd.	Goleta	Sharp	Vectobac G	45.0 lbs
1/17/2012	Ditch behind Goleta Rec. building, near Hollister and San Antonio Rd.	Goleta	Cram	Vectobac G	1.0 lb
1/17/2012	Freshwater marsh at corner of Fowler and Moffett Rd.	Goleta	Cram	Vectobac G	3.0 lbs
1/17/2012	Creek near Hollister and Pacific Oaks Rd.	Goleta	Sharp	Vectobac G	1.0 lb
1/17/2012	Reservoir at "Ever-Bloom" flower Co. 4701 Foothill , 93013	Carp	Ibarra	Vectobac G	4.0 lbs
1/17/2012	Ditch/tule pond at 1540 Cravens Lane, 93013	Carp	Ibarra	Vectobac G	4.0 lbs
1/17/2012	Ditch at Viola Fields (Carp. Ave x Bailard Ave.)	Carp	Ibarra	Vectobac G	3.0 lbs
1/18/2012	Brackish water marsh N. of Mesa Rd, E. of Los Carneros Rd.	Goleta	Cram	Vectobac G	5.0 lbs
1/18/2012	Creek behind homes on Camino Viejo	Mont	Schultz	Vectobac G	2.5 lbs
1/18/2012	Creek near 760 Chelham Way, S. of Westmont College	Mont	Schultz	Vectobac G	.2 lb
1/18/2012	Ditch and two catch basins at N. end ofCarp Ave.-turnabout	Carp	Ibarra	Vectobac G	.3 lb
1/18/2012	Lawn Drain behind patio at 4519 Carpinteria Ave.	Carp	Ibarra	Altosid pellets	.001 lb
1/18/2012	Catch Basin at end of Post Avenue, Carpinteria	Carp	Ibarra	Natular XRT	0.088 lb
1/19/2012	Brackish water marsh N. of Mesa Rd, E. of Los Carneros Rd.	Goleta	Cram	Vectobac G	42.0 lbs
1/20/2012	Freshwater pond/ditch on Ocean Meadows GC, W. of Storke Rd.	Goleta	Schultz	Vectobac G	4.0 lbs
1/25/2012	South finger of Devereux Lagoon on Slough Rd.	UCSB	Ibarra	Vectobac G	4.0 lb
1/25/2012	Vernal Pool West of Devereux Lagoon	UCSB	Ibarra	Vectobac G	6.0 lbs
1/26/2012	Freshwater marshes on SoCalGasCo near Goleta Beach Park	Goleta	Cram	Vectobac G	2.0 lbs
1/27/2012	SB Zoo (500 Ninos Dr.)--ponds/ditches/Bird Refuge	SB	Cram	Vectobac G	17.0 lbs
1/27/2012	Large ditch on Airport property-access from Laundry Rd.	SBAIR	Sharp	Vectobac G	4.0 lbs

**Mosquito and Vector Management District of Santa Barbara County
Larvicide Treatments to Waters of the United States (2012)**

34	1/27/2012	Channel on S.side of SB airport property, near Mesa Rd/J Rd. S	SBAIR	Sharp	Natular XRT	.088 lb
35	1/27/2012	Vernal Pools on More Mesa	HOPE	Schultz	Vectobac G	.1 lb
36	1/30/2012	Willow/Tule floodwater area at Girsh Park-StorkexPhelps Rds.	Goleta	Sharp	Vectobac G	6.0 lbs
37	1/30/2012	Freshwater Marsh at Storke Ranch, near High Grove Ave	Goleta	Sharp	Vectobac G	10.0 lbs
38	1/30/2012	Freshwater Marsh/vernal pools adjacent to 217 Fwy	Goleta	Schultz	Vectobac G	16.0 lbs
39	1/30/2012	Freshwater Marsh on Southside of Modoc Rd.	Goleta	Schultz	Vectobac G	7.0 lbs
40	1/30/2012	Horse troughs, drain pipes, wetlands at UCSB West Campus Stables	UCSB	Ibarra	Vectobac G	.5 lbs
41	1/30/2012	Freshwater marsh adjacent to UCSB West Campus Stables	UCSB	Ibarra	Vectobac G	1.5 lbs
42	1/30/2012	Freshwater marsh at willow thicket south of Ocean Meadows GC	Goleta	Ibarra	Vectobac G	7.0 lbs
43	1/30/2012	Storm drain on lawn east of UCSB police station, Mesa Rd.	UCSB	Ibarra	Vectobac G	.02 lb
44	1/30/2012	Ditch/drains at Facilities Mngmnt/Envtl Health Srvcs, UCSB	UCSB	Ibarra	Vectobac G	.3 lb
45	1/30/2012	Arroyo Hondo Park (Mira Canon Lane x Carrillo St.)-drain outlet/creek	SB	Cram	Vectobac G	1.0 lb
46	1/31/2012	Laguna Creek Flood Control Channel from Yanonali St. to RR tracks	SB	Cram	Vectobac G	20.0 lbs
47	2/1/2012	Tule pond at Chumash Park on Ventana Dr. in Pismo Beach	PISMO	Ibarra	Vectobac G	20.0 lbs
48	2/1/2012	Lagoon/Creek/Marsh at Oceano Campgrounds, Pismo Beach	PISMO	Ibarra	Vectobac G	5.0 lbs
49	2/1/2012	Pismo Lake Ecological Reserve, N 4th Street	PISMO	Ibarra	Vectobac G	60.0 lbs
50	2/1/2012	Ditches/brackish water pools,North Beach Campground, Pismo Beach	PISMO	Ibarra	Vectobac G	42.0 lbs
51	2/2/2012	Salt Marsh at Sandspit Loop off 217 Fwy	Goleta	Cram	Vectobac G	12.0 lbs
52	2/3/2012	Freshwater Marsh/Pond at Patterson/Shoreline Dr.	Goleta	Cram	Vectobac G	3.0 lbs
53	2/3/2012	Flood basin/ditch behind Goleta Rec. building @ Hollister and San Antonio Rd.	Goleta	Cram	Vectobac G	.5 lb
54	2/8/2012	Andree Clark Bird Refuge-1400 Cabrillo Blvd.	SB	Cram	Vectobac G	90.0 lbs
55	2/9/2012	San Pedro Creek at Hollister Ave.	Goleta	Sharp	Vectobac G	7.0 lbs
56	2/10/2012	Freshwater pond/ditch on Ocean Meadows GC, W. of Storke Rd.	Goleta	Schultz	Vectobac G	8.0 lbs
57	2/10/2012	Freshwater Creek running through Ocean Meadows GC	Goleta	Schultz	Vectobac G	8.0 lbs
58	2/10/2012	Devereux Lagoon on Slough Rd.	UCSB	Ibarra	Vectobac G	20.0 lbs
59	2/13/2012	Seasonal Wetland-Los Carneros Rd. and Hollister-"Willow Springs"	Goleta	Sharp	Vectobac G	15.0 lbs
60	2/14/2012	Vernal Pools NW of oil storage tanks near Devereux lagoon	Goleta	Ibarra	Vectobac G	2.0 lbs
61	2/14/2012	Rainwater pools at Mammoth moving company, 389 S. Los Carneros	Goleta	Sharp	Vectobac G	12.0 lbs
62	2/17/2012	Seasonal freshwater marsh on Laundry Rd., N. of Mesa Rd.	SBAIR	Ibarra	Vectobac G	1.0 lb
63	2/17/2012	Lawn Drains near Ellison Hall, UCSB	UCSB	Ibarra	Vectobac G	.1 lb
64	2/17/2012	Drainage ditch on UCSB Campus near Pkng Lot 29	UCSB	Ibarra	Vectobac G	2.0 lbs
65	2/17/2012	Bioswales on UCSB Campus at San Clemente Dorms	UCSB	Ibarra	Vectobac G	3.0 lbs
66	2/21/2012	Flood control channel at Sandpiper MHP, Via Real, Carpinteria	Carp	Ibarra	Vectobac G	.3 lb
67	2/21/2012	Drain/Catch basins at Colorama nursery, Via Real, Carpinteria	Carp	Ibarra	Natular XRT	.088 lb

**Mosquito and Vector Management District of Santa Barbara County
Larvicide Treatments to Waters of the United States (2012)**

68	2/21/2012	Ditch/tule pond at 1540 Cravens Lane, 93013	Carp	Ibarra	Vectobac G	4.0 lbs
69	2/21/2012	Seasonal marsh S. of Hollister Ave, E. of Los Carneros Rd.	Goleta	Sharp	Vectobac G	40.0 lbs
70	2/21/2012	Channel on S.side of SB airport property, near Mesa Rd/J Rd. S	SBAIR	Sharp	Vectobac G	15 lbs.
71	2/22/2012	Atascadero Creek at El Sueno Rd/Calle Real	Goleta	Schultz	Vectobac G	6.0 lbs
72	2/23/2012	Ditch and two catch basins at N. end ofCarp Ave.-turnabout	Carp	Ibarra	Altosid pellets	.1 lb
73	2/23/2012	Ditch at Viola Fields (Carp. Ave x Bailard Ave.)	Carp	Ibarra	Vectobac G	3.0 lbs
74	2/23/2012	Carpinteria Creek, from 101 Fwy North to Foothill Rd.	Carp	Ibarra	Vectobac G	1.0 lb
75	2/23/2012	Carpinteria Creek at Carp Ave and 8th St. x Calle Ocho	Carp	Ibarra	Vectobac G	.5 lb
76	2/23/2012	Sump pump at 1093 Holly Ave, Carpinteria	Carp	Ibarra	Natular XRT	.088 lb
77	2/23/2012	Greenwell Creek, South of the 101 Fwy	SUMLD	Sharp	Natular XRT	.44 lb
78	2/23/2012	Creek/drainage at east end of Banner Ave., Summerland	SUMLD	Sharp	Vectobac G	1.0 lb
79	2/23/2012	3340 Richland Dr.--curbside drain @end of street	SB	Cram	Vectobac G	.5 lb
80	2/23/2012	Rainwater pools on Fish and Game between Mesa Rd. and SB Airport property	Goleta	Cram	Vectobac G	3.0 lbs
81	2/24/2012	Vernal Pool West of Devereux Lagoon	Goleta	Ibarra	Vectobac G	1.0 lb
82	2/24/2012	Drains/ditch at Covington Way x Camino Venturoso, Goleta	Goleta	Sharp	Vectobac G	3.0 lbs
83	2/24/2012	Rainwater pools at Mammoth moving company, 389 S. Los Carneros	Goleta	Sharp	Vectobac G	4.0 lbs
84	2/27/2012	Tributary to Carneros Creek Channel, parallel to Taxiway A, SB Airport	SBAIR	Sharp	Vectobac G	26.0 lbs
85	2/27/2012	Marshy field adjacent to Tecolito Creek Channel, N of Mesa Rd, SB Airport	SBAIR	Sharp	Vectobac G	6.0 lbs
86	2/28/2012	Salt Marsh at Sandspit Loop off 217 Fwy	Goleta	Cram	Vectobac G	3.0 lbs
87	2/28/2012	Marshy pools along bike path adjacent to 217 Fwy	Goleta	Schultz	Vectobac G	3.0 lbs
88	2/28/2012	Roadside drainage along Shoreline Dr., Goleta	Goleta	Schultz	Vectobac G	.1 lb
89	2/28/2012	freshwater marsh SW of Gray's Ranch (Vieja Dr.) on More Mesa	HOPE	Schultz	Vectobac G	.25 lb
90	2/29/2012	Freshwater Marsh on Southside of Modoc Rd., Goleta	Goleta	Schultz	Vectobac G	1.0 lb
91	3/1/2012	Arroyo Hondo Park (Mira Canon Lane x Carrillo St.)-drain outlet/creek	SB	Cram	Vectobac G	1.0 lb
92	3/1/2012	SB Zoo (500 Ninos Dr.)--ponds/ditches/Bird Refuge	SB	Cram	Vectobac G	3.0 lbs
93	3/1/2012	Horse troughs, drain pipes, wetlands at UCSB West Campus Stables	UCSB	Ibarra	Vectobac G	.5 lb
94	3/2/2012	Atascadero Creek SW of Hollister Ave. x Puente Dr.	Goleta	Cram	Vectobac G	2.0 lbs
95	3/2/2012	Hot Springs Creek near Riven Rock Rd., Montecito	Mont	Schultz	Vectobac G	.8 lb
96	3/2/2012	Atascadero Creek at Hollister Ave x Puente Dr.	Goleta	Sharp	Vectobac G	3.0 lbs
97	3/5/2012	Devereux Creek on Ocean Meadows Golf Course	Goleta	Schultz	Vectobac G	.1 lb
98	3/5/2012	Freshwater pond/ditch on Ocean Meadows GC, W. of Storke Rd.	Goleta	Schultz	Vectobac G	6.0 lbs
99	3/7/2012	Freshwater Marsh W. of Los Carneros Rd., on UCSB Storke Campus	UCSB	Ibarra	Vectobac G	4.0 lbs
100	3/7/2012	3340 Richland Dr.--curbside drain @end of street	SB	Cram	Vectobac G	.5 lb
101	3/7/2012	Freshwater marsh at corner of Fowler and Moffett Rd.	Goleta	Cram	Vectobac G	4.0 lbs

**Mosquito and Vector Management District of Santa Barbara County
Larvicide Treatments to Waters of the United States (2012)**

102	3/8/2012	Creek running through Bohnett Park (San Pascual St. x Sola St.), Santa Barbara	SB	Cram	Vectobac G	3.0 lbs
103	3/9/2012	Drainage ditch on UCSB Campus near Pkng Lot 29	UCSB	Ibarra	Vectobac G	.5 lb
104	3/9/2012	Glen Annie Creek/irrigation ditch along Glen Annie Rd, Goleta	Goleta	Schultz	Vectobac G	2.0 lbs
105	3/12/2012	Toro Canyon Creek at 3001 Padaro Lane	Carp	Ibarra	Vectobac G	1.0 lb
106	3/13/2012	Ditch/tule pond at 1540 Cravens Lane, 93013	Carp	Ibarra	Vectobac G	4.0 lbs
107	3/13/2012	Flood Control pond/ditch at 1296 Cravens Lane, 93013	Carp	Ibarra	Vectobac G	3.0 lbs
108	3/13/2012	Creek running through SB City College East Campus, Cliff Drive to Shoreline Drive	SB	Cram	Vectobac G	3.0 lbs
109	3/13/2012	Marshy field adjacent to Tecolito Creek Channel, N of Mesa Rd, SB Airport	SBAIR	Sharp	Vectobac G	5.0 lbs
110	3/14/2012	Ditch at reservoir ("Joselyn Lake") along 192 near Shephards Mesa, 93013	Carp	Ibarra	Vectobac G	.2 lb
111	3/14/2012	Atascadero Creek at Hwy 154 x Cathedral Oaks Rd., Goleta	Goleta	Schultz	Vectobac G	.1 lb
112	3/14/2012	Small ponds at Sylvan Park-Alameda Padre Serra x Dover Lane, Santa Barbara	SB	Cram	Vectobac G	.5 lb
113	3/14/2012	Tributary of Mission Creek at Hwy 192 and SB Tennis/Racquet Club	SB	Cram	Vectobac G	2.0 lbs
114	3/14/2012	Andree Clark Bird Refuge-1400 Cabrillo Blvd.	SB	Cram	Vectobac G	64.0 lbs
115	3/15/2012	Devereux Lagoon on Slough Rd.	UCSB	Ibarra	Vectobac G	6.0 lbs
116	3/15/2012	Pond on ARCO property W of Devereux Lagoon	Goleta	Ibarra	Vectobac G	8.0 lbs
117	3/15/2012	Ditch at bike path crossing, adjacent to 217 Fwy, Goleta	Goleta	Schultz	Vectobac G	.2 lb
118	3/15/2012	Mouth of Creek at Shoreline Park, Shoreline Dr. Santa Barbara	SB	Cram	Vectobac G	.5 lb
119	3/15/2012	Creek running through SB City College West Campus, Cliff Drive to Shoreline Drive	SB	Cram	Vectobac G	3.0 lbs
120	3/16/2012	Ditch/drain at Facilities Mngmnt/Envtl Health Svcs, UCSB	UCSB	Ibarra	Vectobac G	.3 lb
121	3/20/2012	Brackish water marsh N. of Mesa Rd, E. of Los Carneros Rd.	Goleta	Cram	Vectobac G	1.0 lb
122	3/20/2012	Seasonal Wetland-Los Carneros Rd. and Hollister-"Willow Springs"	Goleta	Sharp	Vectobac G	45.0 lbs
123	3/20/2012	Seasonal marsh S. of Hollister Ave, E. of Los Carneros Rd.	Goleta	Sharp	Vectobac G	45.0 lbs
124	3/23/2012	Carpinteria Creek from Foothill Rd. to 101 Fwy, 93013	Carp	Ibarra	Vectobac G	1.0 lb
125	3/23/2012	Arroyo Hondo Park (Mira Canon Lane x Carrillo St.)-drain outlet/creek	SB	Cram	Vectobac G	.5 lb
126	3/23/2012	Freshwater Marsh at Storke Ranch, near High Grove Ave	Goleta	Sharp	Vectobac G	15.0 lbs
127	3/23/2012	Willow/Tule floodwater area at Girsh Park-StorkexPhelps Rds.	Goleta	Sharp	Vectobac G	7.0 lbs
128	3/26/2012	Devereux Lagoon on Slough Rd.	UCSB	Ibarra	Vectobac G	9.0 lbs
129	3/26/2012	Horse troughs, drain pipes, wetlands at UCSB West Campus Stables	UCSB	Ibarra	Vectobac G	1.0 lb
130	3/26/2012	Freshwater Marsh on Southside of Modoc Rd.	Goleta	Schultz	Vectobac G	1.5 lbs
131	3/26/2012	Laguna Creek Flood Control Channel from Yanonali St. to RR tracks	SB	Cram	Vectobac G	12.0 lbs
132	3/27/2012	Ditch behind Goleta Rec. building, near Hollister and San Antonio Rd.	Goleta	Cram	Vectobac G	.5 lb
133	3/27/2012	Salt Marsh at Sandspit Loop off 217 Fwy	Goleta	Cram	Vectobac G	2.0 lbs
134	3/27/2012	Freshwater marsh at corner of Fowler and Moffett Rd.	Goleta	Cram	Vectobac G	4.0 lbs
135	3/27/2012	Freshwater Marsh/Pond at Patterson/Shoreline Dr.	Goleta	Cram	Vectobac G	3.0 lbs

**Mosquito and Vector Management District of Santa Barbara County
Larvicide Treatments to Waters of the United States (2012)**

136	3/28/2012	Ditch E and W of Sand Point Rd., off Santa Claus Lane, 93013	Carp	Ibarra	Vectobac G	.5 lb
137	3/28/2012	Rainwater pools along RR tracks behind homes on 4th St, Carpinteria	Carp	Ibarra	Vectobac G	.3 lb
138	3/29/2012	Seasonal freshwater marsh on Laundry Rd., N. of Mesa Rd.	SBAIR	Ibarra	Vectobac G	.5 lb
139	3/29/2012	Drainage ditch on UCSB Campus near Pkng Lot 29	UCSB	Ibarra	Vectobac G	1.0 lb
140	3/29/2012	Drain behing SB County Edu. Office on Hwy 192, Goleta	Goleta	Schultz	Natular XRT	.088 lb
141	3/30/2012	Catch basins at Camino Corto Rd. off El Colegio Rd., Isla Vista	IV	Schultz	Natular XRT	0.176 lb
142	3/30/2012	Freshwater pond/ditch on Ocean Meadows GC, W. of Storke Rd.	Goleta	Schultz	Vectobac G	6.0 lbs
143	4/2/2012	Pools just N of Ocean Meadows Golf Course, S of Marymount Way, Goleta	Goleta	Cram	Vectobac G	2.5 lbs
144	4/5/2012	Roadside drainage along Shoreline Dr., Goleta	Goleta	Cram	Vectobac G	1.0 lb
145	4/5/2012	Bioswale/ditch at Walnut Lane x Rhoads Ave.	Goleta	Cram	Vectobac G	.5 lb
146	4/5/2012	Polluted ditch/pools near mobile home park near junction of 154 Hwy/101 Fwy	Goleta	Cram	Natular XRT	0.176 lb
147	4/5/2012	Glen Annie Creek/irrigation ditch along Glen Annie Rd, Goleta	Goleta	Cram	Vectobac G	1.5 lbs
148	4/6/2012	Creek running through SB City College West Campus, Cliff Drive to Shoreline Driv	SB	Ibarra	Altosid pellets	1.0 lb
149	4/6/2012	Bioswales on UCSB Campus at San Clemente Dorms	UCSB	Sharp	Vectobac G	1.0 lb
150	4/6/2012	Feshwater/brackish marsh E. of Los Carneros Rd., on UCSB Storke Campus	UCSB	Sharp	Vectobac G	4.0 lbs
151	4/6/2012	Freshwater Marsh W. of Los Carneros Rd., on UCSB Storke Campus	UCSB	Sharp	Vectobac G	2.0 lbs
152	4/9/2012	Marshy field adjacent to Tecolito Creek Channel, N of Mesa Rd, SB Airport	SBAIR	Schultz	Vectobac G	1.5 lbs
153	4/9/2012	Franklin Creek at Malibu Drive, Carpinteria	Carp	Sharp	Vectobac G	1.0 lb
154	4/9/2012	Drainage ditch Nipomo Ave x Linden Ave, Carpinteria	Carp	Sharp	Vectobac G	2.0 lbs
155	4/9/2012	Flood control channel at Sandpiper MHP, Via Real, Carpinteria	Carp	Sharp	Vectobac G	1.0 lb
156	4/10/2012	Freshwater Marsh at Storke Ranch, near High Grove Ave	Goleta	Schultz	Vectobac G	3.0 lbs
157	4/12/2012	SB Zoo (500 Ninos Dr.)--ponds/ditches near Bird Refuge	SB	Ibarra	Vectobac G	4.0 lbs
158	4/17/2012	Drain/ditch at Alice Keck Park, Garden x Arrellaga St., Santa Barbara	SB	Ibarra	Vectobac G	.2 lb
159	4/17/2012	Lawn drains at 8 W. Constance Ave, Santa Barbara	SB	Ibarra	Vectobac G	.2 lb
160	4/17/2012	Mouth of Creek at Shoreline Park, Shoreline Dr. Santa Barbara	SB	Ibarra	Vectobac G	.3 lb
161	4/17/2012	Sump pumps at Drive-In theater at South end of Kellogg Ave.	Goleta	Schultz	Natular XRT	.176 lb
162	4/17/2012	Atascadero Creek channel at Calle Real and El Sueno Rd.	Goleta	Cram	Vectobac G	1.5 lbs
163	4/17/2012	Spring and small pond NE of Cocopah Dr. and Naranjo Dr.	Goleta	Cram	Vectobac G	3.0 lbs
164	4/18/2012	Pools just N of Ocean Meadows Golf Course, S of Marymount Way, Goleta	Goleta	Cram	Vectobac G	3.0 lbs
165	4/19/2012	Ditch between Hollister Ave. and Firestone Rd. Goleta	Goleta	Schultz	Vectobac G	.1 lb
166	4/20/2012	Freshwater Marsh/Pond at Patterson/Shoreline Dr.	Goleta	Ibarra	Vectobac G	1.0 lb
167	4/20/2012	Seasonal marsh S. of Hollister Ave, E. of Los Carneros Rd.	Goleta	Schultz	Vectobac G	60.0 lbs
168	4/23/2012	Creek/drainage at east end of Banner Ave., Summerland	SUMLD	Schultz	Natular XRT	.44 lb
169	4/24/2012	Creek running through Bohnett Park (San Pascual St. x Sola St.), Santa Barbara	SB	Ibarra	Vectobac G	2.0 lbs

**Mosquito and Vector Management District of Santa Barbara County
Larvicide Treatments to Waters of the United States (2012)**

170	4/24/2012	Bioswales at Pine Street, N of Modoc Rd., S of 101 Fwy	Goleta	Ibarra	Natular XRT	.088 lb
171	4/24/2012	Marsh adjacent to J Rd, N of tide gate on SB Airport property	SBAIR	Schultz	Vectobac G	5.0 lbs
172	4/24/2012	Vernal pools SE of Lake Los Carneros, Calle Real x La Patera Rd, Goleta	Goleta	Schultz	Vectobac G	.1 lb
173	4/24/2012	Ditch along RR tracks W of Estero Way, Carpinteria Salt Marsh	Carp	Sharp	Vectobac G	3.0 lbs
174	4/25/2012	Freshwater marsh at corner of Fowler and Moffett Rd.	Goleta	Ibarra	Vectobac G	.5 lb
175	4/26/2012	Salt Marsh at Sandspit Loop off 217 Fwy	Goleta	Ibarra	Vectobac G	7.0 lbs
176	4/26/2012	Freshwater Marsh N of Phelps Rd, E of Storke Rd, Goleta	Goleta	Schultz	Vectobac G	1.0 lb
177	4/27/2012	Freshwater marsh at corner of Fowler and Moffett Rd.	Goleta	Ibarra	Altosid Briquets	3.57 lbs
178	4/27/2012	Las Vegas Creek at Hollister Ave x Fairview Ave., Goleta	Goleta	Sharp	Vectobac G	3.0 lbs
179	4/27/2012	Glen Annie Creek/irrigation ditch along Glen Annie Rd, Goleta	Goleta	Sharp	Vectobac G	1.0 lb
180	4/27/2012	Irrigation ditch along Glen Annie Rd, Goleta, N of Cathedral Oaks	Goleta	Cram	Vectobac G	3.0 lbs
181	4/27/2012	Freshwater Marsh on Southside of Modoc Rd.	Goleta	Cram	Vectobac G	6.0 lbs
182	4/30/2012	Creek/marsh at Evergreen Park, Evergreen Dr and Cathedral Oaks Rd., Goleta	Goleta	Schultz	Vectobac G	.1 lb
183	4/30/2012	Freshwater Marsh/vernal pools adjacent to 217 Fwy	Goleta	Cram	Vectobac G	6.0 lbs
184	5/1/2012	Andree Clark Bird Refuge-1400 Cabrillo Blvd.	SB	Ibarra	Vectobac G	78.5 lbs
185	5/1/2012	Puddles/vernal pools along RR tracks at 101 Fwy, Exit 95, Santa Barbara	SB	Ibarra	Vectobac G	.1 lb
186	5/2/2012	Marshy field adjacent to Tecolito Creek Channel, N of Mesa Rd, SB Airport	SBAIR	Schultz	Vectobac G	1.0 lb
187	5/2/2012	Seasonal Wetland-Los Carneros Rd. and Hollister-"Willow Springs"	Goleta	Schultz	Vectobac G	.1 lb
188	5/2/2012	Drain/ditch at Alice Keck Park, Garden x Arrellaga St., Santa Barbara	SB	Ibarra	Vectobac G	.1 lb
189	5/2/2012	Oceano Dunes Wetland/tule marsh at Highway 1 x Grand Ave., Oceano	PISMO	Learned	Vectobac G	680 lbs.
190	5/2/2012	Seasonal freshwater marsh on Laundry Rd., N. of Mesa Rd.	SBAIR	Sharp	Vectobac G	2.0 lbs
191	5/2/2012	Drain opposite 980 Cold Springs Rd, Montecito	Mont	Cram	Natular XRT	.044 lb
192	5/3/2012	Tule pond at Chumash Park on Ventana Dr. in Pismo Beach	PISMO	Ibarra	Vectobac G	13.0 lbs
193	5/3/2012	Ditches/brackish water pools,North Beach Campground, Pismo Beach	PISMO	Ibarra	Vectobac G	30.0 lbs
194	5/3/2012	Ponds/ditch at Pismo State Beach Golf Course "Le Sage Riviera"	PISMO	Ibarra	Vectobac G	7.0 lbs
195	5/3/2012	Lagoon/Creek/Marsh at Oceano Campgrounds, Pismo Beach	PISMO	Ibarra	Vectobac G	5.0 lbs
196	5/3/2012	Pismo Lake Ecological Reserve, N 4th Street	PISMO	Ibarra	Vectobac G	6.0 lbs
197	5/4/2012	Flood basin/ditch behind Goleta Rec. building @ Hollister and San Antonio Rd.	Goleta	Ibarra	Vectobac G	5.0 lbs
198	5/4/2012	Maria Ygnacio Creek at Hollister Ave,. Between Patterson Ave and Lassen Dr.	Goleta	Ibarra	Vectobac G	3.0 lbs
199	5/7/2012	Cieneguitas Creek at Foothill Rd. and Cocopah Dr.	Goleta	Ibarra	Vectobac G	.5 lb
200	5/7/2012	Creek/culvert at Fairview Ave. x Holiday Hill Rd.	Goleta	Cram	Natular XRT	.176 lb
201	5/7/2012	freshwater marsh SW of Gray's Ranch (Vieja Dr.) on More Mesa, Goleta	Goleta	Cram	Vectobac G	.25 lb
202	5/8/2012	Carpinteria Salt Marsh, Sand Point Rd. x RR tracks	Carp	Sharp	Vectobac G	2.0 lbs
203	5/8/2012	Carpinteria Salt Marsh, bulldozer tracks E. of Sand Point Rd. x S. of RR tracks	Carp	Sharp	Vectobac G	7.0 lbs

**Mosquito and Vector Management District of Santa Barbara County
Larvicide Treatments to Waters of the United States (2012)**

204	5/8/2012	Carpinteria Salt Marsh, Ditch along RR tracks E. of Sand Point Rd.	Carp	Sharp	Vectobac G	19.0 lbs
205	5/8/2012	Carpinteria Salt Marsh, bulldozer tracks W of Estero Way	Carp	Sharp	Vectobac G	11.0 lbs
206	5/8/2012	Carpinteria Salt Marsh, SW of Estero Way x Carpinteria Ave.	Carp	Sharp	Vectobac G	4.0 lbs
207	5/8/2012	Carpinteria Salt Marsh, West of Sandyland Cove Rd.	Carp	Sharp	Vectobac G	2.0 lbs
208	5/9/2012	Seasonal marsh S. of Hollister Ave, E. of Los Carneros Rd.	Goleta	Schultz	Vectobac G	36.0 lbs
209	5/9/2012	Salt Marsh at Sandspit Loop off 217 Fwy	Goleta	Ibarra	Vectobac G	7.0 lbs
210	5/9/2012	Salt Marsh N of University Rd, W of 217 Fwy, Goleta	Goleta	Sharp	Vectobac G	35.4 lbs
211	5/10/2012	Catch basin in Parking lot of Sandpiper Golf Course off Hollister Ave, Goleta	Goleta	Schultz	Natular XRT	.088 lb
212	5/10/2012	Maria Ygnacio Creek at Hollister Ave,. Between Patterson Ave and San Ricardo Dr	Goleta	Ibarra	Vectobac G	14.0 lbs
213	5/11/2012	Irrigation ditch along Glen Annie Rd, Goleta, N of Cathedral Oaks	Goleta	Cram	Vectobac G	3.0 lbs
214	5/14/2012	Willow/Tule floodwater area at Girsh Park-StorkexPhelps Rds.	Goleta	Cram	Vectobac G	3.0 lbs
215	5/15/2012	Lake Los Carneros, inlet at Covington Way x Camino Venturoso, Goleta	Goleta	Schultz	Vectobac G	6.0 lbs
216	5/15/2012	Drains/ditch at Covington Way x Camino Laguna Vista , Goleta	Goleta	Schultz	Natular XRT	.32 lb
217	5/15/2012	Drains/ditch at Covington Way x Camino Venturoso, Goleta	Goleta	Schultz	Natular XRT	.176 lb
218	5/15/2012	5' deep drain at 868 HighlandAve. x 855 Miramonte Dr. SB 93109	SB	Ibarra	Altosid XR Briquet	.08 lb
219	5/15/2012	Roadside drainage along Shoreline Dr., Goleta	Goleta	Cram	Vectobac G	.1 lb
220	5/15/2012	"Hospital Creek" S of Hollister Ave, N of Atascadero Creek, at Puente Dr., Goleta	Goleta	Cram	Vectobac G	2.5 lbs
221	5/16/2012	Creek from Hollister Ave. to Newport Drive, Goleta	Goleta	Schultz	Vectobac G	.3 lb
222	5/16/2012	Rainwater pool and ditch at end of Via Jero Dr., Goleta	Goleta	Schultz	Vectobac G	1.0 lb
223	5/16/2012	Reservoir at 7272 Hollister Ave., Goleta	Goleta	Schultz	Natular XRT	.088 lb
224	5/16/2012	Arroyo Hondo Park (Mira Canon Lane x Carrillo St.)-drain outlet/creek	SB	Ibarra	Vectobac G	.3 lb
225	5/16/2012	Mesa Creek at Mesa Park, Elise Way off Meigs Rd., Santa Barbara	SB	Ibarra	Vectobac G	3.0 lbs
226	5/16/2012	Atascadero Creek, S. of Hollister Ave, between Patterson Ave. and Puente Dr.	Goleta	Ibarra	Vectobac G	7.0 lbs
227	5/16/2012	Drainage ditch on UCSB Campus near Pkng Lot 29	UCSB	Sharp	Vectobac G	.1 lb
228	5/16/2012	Bioswales/Vernal pools on UCSB Campus, Manzanita Dorms	UCSB	Sharp	Vectobac G	2.0 lbs
229	5/16/2012	Freshwater pond/ditch on Ocean Meadows GC, W. of Storke Rd.	Goleta	Cram	Vectobac G	4.0 lbs
230	5/17/2012	Devereux Creek from Ellwood Beach Dr. to Coronado Dr., Goleta	Goleta	Schultz	Vectobac G	2.0 lbs
231	5/17/2012	Concrete channel behind library at 500 N. Fairview Rd., Goleta	Goleta	Schultz	Vectobac G	.2 lb
232	5/17/2012	Debris basin W of Maria Ygnacio Ln, N of Via Regina, Goleta	Goleta	Cram	Vectobac G	3.0 lbs
233	5/18/2012	Ditch between 3835 & 3843 Connie Way, concrete box behind 3849 Calle Cita	Goleta	Ibarra	Vectobac G	.3 lb
234	5/18/2012	Puddles/vernal pools along RR tracks at 101 Fwy, Exit 95, Santa Barbara	SB	Ibarra	Vectobac G	.1 lb
235	5/18/2012	Creek running through SB City College East Campus, Cliff Drive to Shoreline Drive	SB	Ibarra	Vectobac G	7.0 lbs
236	5/18/2012	Ditch along RR tracks W of Estero Way, Carpinteria Salt Marsh	Carp	Sharp	Vectobac G	3.0 lbs
237	5/21/2012	Maria Ygnacio Creek N of Hollister Ave, W of Lassen Dr.	Goleta	Cram	Vectobac G	2.0 lbs

**Mosquito and Vector Management District of Santa Barbara County
Larvicide Treatments to Waters of the United States (2012)**

238	5/22/2012	Seasonal Wetland-Los Carneros Rd. and Hollister-"Willow Springs"	Goleta	Schultz	Vectobac G	12.0 lbs
239	5/22/2012	Drain/gutter at 6632 Lindmar Dr., Goleta	Goleta	Schultz	Vectobac G	.1 lb
240	5/22/2012	SB Zoo (500 Ninos Dr.)--ponds/ditches near Bird Refuge	SB	Ibarra	Vectobac G	3.0 lbs
241	5/22/2012	Drain outlet along Cathedral Oaks Rd, E of Camino del Remedio, Goleta	Goleta	Cram	Vectobac G	2.0 lbs
242	5/25/2012	Gulley/storm drain at 2752 Foothill Rd. SB	SB	Sharp	Vectobac G	.5 lb
243	5/29/2012	Flood Control Channel N of Berkeley Rd, between Arundel Rd. and Wakefield Rd.	Goleta	Ibarra	Vectobac G	1.5 lbs
244	5/29/2012	Freshwater pond/ditch on Ocean Meadows GC, W. of Storke Rd.	Goleta	Cram	Vectobac G	4.0 lbs
245	5/29/2012	Irrigation ditch along Glen Annie Rd, Goleta, N of Cathedral Oaks	Goleta	Cram	Vectobac G	3.0 lbs
246	5/30/2012	Laguna Creek Flood Control Channel from Yanonali St. to RR tracks	SB	Ibarra	Vectobac G	10.0 lbs
247	5/30/2012	Tributary of Las Vegas Creek, W of Franklin Ranch Rd, Goleta	Goleta	Cram	Vectobac G	10.0 lbs
248	5/30/2012	Drains on W side of Barling Terrace, off Stow Canyon Rd., Goleta	Goleta	Schultz	Natular XRT	.616 lbs
249	5/30/2012	Concrete ditch on E side of Amherst Dr, N of Shirell Way, Goleta	Goleta	Schultz	Vectobac G	.2 lb
250	5/31/2012	Catch basin on E side of Camino Corto at Estero Rd, Isla Vista	IV	Ibarra	Vectobac G	.5 lb
251	5/31/2012	Catch basin at SE corner of Winchester Dr. x Rio Vista Dr., Goleta	Goleta	Schultz	Natular XRT	.088 lb
252	5/31/2012	Creek/marsh at Evergreen Park, Evergreen Dr and Cathedral Oaks Rd., Goleta	Goleta	Schultz	Vectobac G	8.0 lbs
253	6/1/2012	Drainage ditch Nipomo Ave x Linden Ave, Carpinteria	Carp	Sharp	Vectobac G	1.0 lb
254	6/1/2012	Ditch along W side of Santa Ynez Ave. at Camino Real Apts., Carpinteria	Carp	Sharp	Vectobac G	.5 lb
255	6/1/2012	Creek running through Bohnett Park (San Pascual St. x Sola St.), Santa Barbara	SB	Ibarra	Vectobac G	2.0 lbs
256	6/1/2012	Arroyo Hondo Park (Mira Canon Lane x Carrillo St.)-drain outlet/creek	SB	Ibarra	Vectobac G	.3 lb
257	6/1/2012	Ditch on E side of home at 3015 Calle Noguera, Santa Barbara	SB	Ibarra	Vectobac G	.2 lb
258	6/1/2012	Mouth of Creek at Shoreline Park, Shoreline Dr. Santa Barbara	SB	Ibarra	Vectobac G	.2 lb
259	6/4/2012	Ditch along RR tracks W of Estero Way, Carpinteria Salt Marsh	Carp	Sharp	Vectobac G	16.0 lbs
260	6/4/2012	Carpinteria Salt Marsh, Sand Point Rd. x RR tracks	Carp	Sharp	Vectobac G	8.0 lbs
261	6/4/2012	Carpinteria Salt Marsh, bulldozer tracks E. of Sand Point Rd. x S. of RR tracks	Carp	Sharp	Vectobac G	16.0 lbs
262	6/4/2012	Carpinteria Salt Marsh, adjacent to Sandyland Cove Rd., North of Del Mar Ave	Carp	Sharp	Vectobac G	8.0 lbs
263	6/5/2012	Willow/Tule floodwater area at Girsh Park-StorkexPhelps Rds.	Goleta	Cram	Vectobac G	.1 lb
264	6/5/2012	Willow/Tule floodwater area at Girsh Park-StorkexPhelps Rds.	Goleta	Cram	Natular XRT	.264 lb
265	6/6/2012	Andree Clark Bird Refuge-1400 Cabrillo Blvd.	SB	Ibarra	Vectobac G	112.0 lbs
266	6/6/2012	Creeks running through E and W Campuses of SB City College	SB	Ibarra	Vectobac G	11.0 lbs
267	6/6/2012	Puddles/vernal pools along RR tracks at 101 Fwy, Exit 95, Santa Barbara	SB	Ibarra	Vectobac G	.1 lb
268	6/7/2012	Ditch between 3835 & 3843 Connie Way, concrete box behind 3849 Calle Cita	Goleta	Ibarra	Vectobac G	.1 lb
269	6/7/2012	Lawn drains at 8 W. Constance Ave, Santa Barbara	SB	Ibarra	Vectobac G	.2 lb
270	6/8/2012	Drain with tule reeds, E of Storke Rd, W of High Grove Ave.	Goleta	Schultz	Vectobac G	.1 lb
271	6/11/2012	Flood Control Channel N of Berkeley Rd, between Arundel Rd. and Wakefield Rd.	Goleta	Ibarra	Vectobac G	1.5 lbs

**Mosquito and Vector Management District of Santa Barbara County
Larvicide Treatments to Waters of the United States (2012)**

272	6/11/2012	Drains/ditch at Covington Way x Camino Laguna Vista , Goleta	Goleta	Schultz	Vectobac G	.01 lb
273	6/11/2012	Lake Los Carneros, inlet at Covington Way x Camino Venturoso, Goleta	Goleta	Schultz	Vectobac G	4.0 lbs
274	6/12/2012	Mesa Creek at Mesa Park, Elise Way off Meigs Rd., Santa Barbara	SB	Ibarra	Vectobac G	5.0 lbs
275	6/12/2012	Mouth of Creek at Shoreline Park, Shoreline Dr. Santa Barbara	SB	Ibarra	Vectobac G	.2 lbs
276	6/12/2012	Atascadero Creek and Hospital Creek between Patterson Ave. and Puente Dr.	Goleta	Ibarra	Vectobac G	17.0 lbs
277	6/12/2012	Roadside drainage along Shoreline Dr., Goleta	Goleta	Cram	Vectobac G	.1 lb
278	6/13/2012	Ditch along Maria Ygnacio Trail off Overpass Rd, between Lassen Dr. and Patterson Ave.	Goleta	Ibarra	Vectobac G	.7 lb
279	6/13/2012	Atascadero Creek at Maria Ygnacio Creek, E of Patterson Ave.	Goleta	Ibarra	Vectobac G	12.0 lbs
280	6/13/2012	Maria Ygnacio Creek at Hollister Ave., Between Patterson Ave and Lassen Dr.	Goleta	Cram	Vectobac G	.2 lb
281	6/13/2012	Devereux Creek at end of Coronado Dr., east to end of Ellwood Beach Dr.	Goleta	Schultz	Vectobac G	1.0 lb
282	6/14/2012	Tecolote Creek from Vereda del Ciervo to Calle Real, Rancho Embarcadero, Goleta	Goleta	Sharp	Vectobac G	15.0 lbs
283	6/14/2012	Ditch on E side of home at 3015 Calle Noguera, Santa Barbara	SB	Ibarra	Vectobac G	.2 lb
284	6/14/2012	Freshwater Marsh/Pond at Patterson/Shoreline Dr.	Goleta	Cram	Vectobac G	2.0 lbs
285	6/14/2012	Tributary of Devereux Creek at Newport Dr., Goleta	Goleta	Schultz	Altosid pellets	.1 lb
286	6/15/2012	Puddles/vernal pools along RR tracks at 101 Fwy, Exit 95, Santa Barbara	SB	Ibarra	Vectobac G	.1 lb
287	6/15/2012	Ditch along Stanwood Dr. E of Sheffield Reservoir, Santa Barbara	SB	Ibarra	Vectobac G	1.0 lb
288	6/18/2012	Concrete channel behind library at 500 N. Fairview Rd., Goleta	Goleta	Schultz	VectoLex CG	.1 lb
289	6/19/2012	Pismo Lake Ecological Reserve, N 4th Street	PISMO	Ibarra	Vectobac G	3.0 lbs
290	6/19/2012	Tule pond at Chumash Park on Ventana Dr. in Pismo Beach	PISMO	Ibarra	Vectobac G	1.0 lbs
291	6/19/2012	Lagoon/Creek/Marsh at Oceano Campgrounds, Pismo Beach	PISMO	Ibarra	Vectobac G	7.0 lbs
292	6/20/2012	Drain/ditch at Alice Keck Park, Garden x Arrellaga St., Santa Barbara	SB	Ibarra	Vectobac G	.1 lb
293	6/20/2012	Creek/marsh at Evergreen Park, Evergreen Dr and Cathedral Oaks Rd., Goleta	Goleta	Schultz	Vectobac G	8.0 lbs
294	6/20/2012	Sump pump at vacant lot, 118 State St., Santa Barbara	SB	Ibarra	Natular XRT	.088 lb
295	6/21/2012	Ditch at Sand Point Rd., off Santa Claus Lane, 93013	Carp	Sharp	Vectobac G	9.0 lbs
296	6/21/2012	Carpinteria Salt Marsh, bulldozer tracks E. of Sand Point Rd. x S. of RR tracks	Carp	Sharp	Vectobac G	8.0 lbs
297	6/22/2012	Carpinteria Creek from Foothill Rd. to 101 Fwy, 93013	Carp	Sharp	Vectobac G	4.0 lbs
298	6/22/2012	Flood control channel at Sandpiper MHP, Via Real, Carpinteria	Carp	Sharp	Vectobac G	1.0 lb
299	6/22/2012	Ditch between Old Coast Hwy and Municipal tennis courts, Montecito	Mont	Ibarra	Vectobac G	.1 lb
300	6/22/2012	Catch basins at Camino Corto Rd. off El Colegio Rd., Isla Vista	IV	Cram	Vectobac G	.176 lb
301	6/22/2012	Montecito Creek at Hot Springs Rd. N of Flood Control Debris Basin, Montecito	Mont	Cram	Vectobac G	1.5 lbs
302	6/22/2012	Carpinteria Salt Marsh, bulldozer tracks E. of Sand Point Rd. x S. of RR tracks	Carp	Cram	Vectobac G	5.0 lbs
303	6/25/2012	Lawn drains at 8 W. Constance Ave, Santa Barbara	SB	Ibarra	Altosid XR Briquet	.24 lb
304	6/25/2012	"Hospital Creek" S of Hollister Ave, N of Atascadero Creek, at Puente Dr., Goleta	Goleta	Ibarra	Vectobac G	2.0 lbs
305	6/25/2012	Freshwater Marsh/Pond at Patterson/Shoreline Dr.	Goleta	Cram	Vectobac G	3.0 lbs

**Mosquito and Vector Management District of Santa Barbara County
Larvicide Treatments to Waters of the United States (2012)**

306	6/25/2012	Freshwater pond/ditch on Ocean Meadows GC, W. of Storke Rd.	Goleta	Cram	Vectobac G	.5 lb
307	6/25/2012	Lake Los Carneros, inlet at Covington Way x Camino Venturoso, Goleta	Goleta	Schultz	Vectobac G	3.0 lbs
308	6/25/2012	Drains/ditch at Covington Way x Camino Laguna Vista , Goleta	Goleta	Schultz	Natular XRT	0.176 lb
309	6/25/2012	Concrete ditch on E side of Amherst Dr, N of Shirell Way, Goleta	Goleta	Schultz	VectoLex CG	.2 lb
310	6/26/2012	SB Zoo (500 Ninos Dr.)--ponds/ditches near Bird Refuge	SB	Ibarra	Vectobac G	1.0 lb
311	6/26/2012	Creek at N end of Lou Dillon Lane off Salinas Ave, Santa Barbara	SB	Ibarra	Vectobac G	.5 lb
312	6/26/2012	Irrigation ditch along Glen Annie Rd, Goleta, N of Cathedral Oaks	Goleta	Cram	Vectobac G	2.0 lbs
313	6/26/2012	Willow/Tule floodwater area at Girsh Park-StorkexPhelps Rds.	Goleta	Cram	Vectobac G	1.5 lbs
314	6/26/2012	Drain outlet along Cathedral Oaks Rd, E of Camino del Remedio, Goleta	Goleta	Cram	Vectobac G	2.0 lbs
315	6/27/2012	Ditch/creek N and S of Via Lemora, E of Fairview Ave., Goleta	Goleta	Cram	Vectobac G	2.0 lbs
316	6/27/2012	Glen Annie Creek at NW corner of Glen Annie Rd. x Cathedral Oaks Rd., Goleta	Goleta	Cram	Vectobac G	1.5 lbs
317	6/27/2012	Creek/culvert at Fairview Ave. x Holiday Hill Rd.	Goleta	Cram	Natular XRT	.176 lb
318	6/27/2012	Drain/gutter at 6632 Lindmar Dr., Goleta	Goleta	Schultz	Vectobac G	.1 lb
319	6/27/2012	Drain with tule reeds, E of Storke Rd, W of High Grove Ave.	Goleta	Schultz	VectoLex CG	.1 lb
320	6/28/2012	Mouth of Creek at Shoreline Park, Shoreline Dr. Santa Barbara	SB	Ibarra	Vectobac G	.1 lb
321	6/28/2012	Ditch along Old Coast Highway, S of Montecito Country Club	Mont	Ibarra	Vectobac G	1.0 lb
322	6/28/2012	Ditch between Old Coast Hwy and Municipal tennis courts, Montecito	Mont	Ibarra	Vectobac G	.1 lb
323	6/28/2012	Ditch/bioswale at 484 Barker Pass Rd., Montecito	Mont	Cram	Vectobac G	.25 lb
324	6/28/2012	Tecolote Creek at Hollister Ave and 101 Fwy, Goleta	Goleta	Schultz	Vectobac G	1.0 lb
325	6/29/2012	Flood Control pond/ditch at 1296 Cravens Lane, 93013	Carp	Sharp	Vectobac G	4.0 lbs
326	6/29/2012	Drainage ditches at "The Grove" condos at Hollister x Pebble Beach Dr, Goleta	Goleta	Sharp	Vectobac G	2.0 lbs
327	6/29/2012	Catch basin/drain N of RR tracks, S of 101 Fwy at Winchester Canyon Rd offramp	Goleta	Sharp	Vectobac G	.5 lb
328	6/29/2012	Winchester Canyon Creek N of Calle Real	Goleta	Sharp	Vectobac G	5.0 lbs
329	6/29/2012	Flood Control ditch N of Calle Real, E of Ellwood Station Rd., Goleta	Goleta	Sharp	Vectobac G	5.0 lbs
330	6/29/2012	Glen Annie Creek N of Cathedral Oaks Rd., Goleta	Goleta	Sharp	Vectobac G	2.0 lbs
331	6/29/2012	Drain at junction of Las Vegas x Maria Ygnacio Creeks, Hollister Ave x Fairview Rd	Goleta	Sharp	Vectobac G	.25 lb
332	6/29/2012	Cieneguitas Creek/ditches on N side of Calle Real, E of Old Mill Rd., Goleta	Goleta	Cram	Vectobac G	.5 lb
333	6/29/2012	Drain outlet on W side of Ribera Rd, between Pintura Dr. and Parkwood Pl., Gole	Goleta	Cram	Natular XRT	.264 lb
334	6/29/2012	Slough at mouth of Tecolote Creek, E of Bacara Resort, Goleta	Goleta	Cram	Natular XRT	1.408 lbs
335	6/29/2012	Slough at mouth of Tecolote Creek, E of Bacara Resort, Goleta	Goleta	Cram	Vectobac G	2.0 lbs
336	7/3/2012	Carpinteria Salt Marsh, bulldozer tracks E. of Sand Point Rd. x S. of RR tracks	Carp	Schultz	Vectobac G	19.0 lbs
337	7/3/2012	Ditch at Sand Point Rd., off Santa Claus Lane, 93013	Carp	Schultz	Vectobac G	10.0 lbs
338	7/3/2012	Carpinteria Salt Marsh, Sand Point Rd. x RR tracks	Carp	Schultz	Vectobac G	8.0 lbs
339	7/3/2012	Ditch along RR tracks W of Estero Way, Carpinteria Salt Marsh	Carp	Schultz	Vectobac G	7.5 lbs

**Mosquito and Vector Management District of Santa Barbara County
Larvicide Treatments to Waters of the United States (2012)**

340	7/3/2012	Carpinteria Salt Marsh, bulldozer tracks W of Estero Way	Carp	Schultz	Vectobac G	16.0 lbs
341	7/3/2012	Carpinteria Salt Marsh, rainwater source W of Santa Monica Creek Channel	Carp	Schultz	Vectobac G	2.0 lbs
342	7/3/2012	Carpinteria Salt Marsh, adjacent to Sandyland Cove Rd., North of Del Mar Ave	Carp	Schultz	Vectobac G	7.5 lbs
343	7/5/2012	Drainage ditches at "The Grove" condos at Hollister x Pebble Beach Dr, Goleta	Goleta	Cram	Vectobac G	.5 lb
344	7/6/2012	Flood Control Channel N and S of Berkeley Rd, between Arundel Rd. and Wakefield	Goleta	Ibarra	Vectobac G	2.0 lbs
345	7/6/2012	Concrete ditch N of Encina Rd., E of Fairview Ave. @ "New Horizons Sr. Housing"	Goleta	Ibarra	Vectobac G	1.0 lb
346	7/6/2012	Las Vegas Creek at Franklin Ranch Rd., N. of La Goleta Rd.	Goleta	Ibarra	Vectobac G	10.0 lbs
347	7/6/2012	Lawn drains/ditch at 1006 Via Los Padres	Goleta	Ibarra	Vectobac G	.3 lb
348	7/6/2012	Concrete ditch S of Hollister Rd. between Cannon Green and Pacific Oaks Rd., Goleta	Goleta	Cram	Vectobac G	3.0 lbs
349	7/6/2012	Creek NE of Pacific Oaks Rd. above Hollister Ave., Goleta	Goleta	Cram	Vectobac G	3.0 lbs
350	7/9/2012	Ditch/creek N and S of Via Lemora, E of Fairview Ave., Goleta	Goleta	Ibarra	Vectobac G	1.5 lbs
351	7/9/2012	San Pedro Creek from Cathedral Oaks Rd. to Covington Way, Goleta	Goleta	Cram	Vectobac G	2.5 lbs
352	7/9/2012	San Pedro Creek E of Fairview Ave., from Hollister Ave. to Matthews St., Goleta	Goleta	Cram	Vectobac G	2.0 lbs
353	7/9/2012	Devereux Creek at end of Coronado Dr.	Goleta	Cram	Vectobac G	1.0 lb
354	7/10/2012	Drain outlet along Cathedral Oaks Rd, E of Camino del Remedio, Goleta	Goleta	Ibarra	Vectobac G	1.0 lb
355	7/10/2012	Irrigation ditch along Glen Annie Rd, Goleta, N of Cathedral Oaks	Goleta	Ibarra	Vectobac G	3.0 lbs
356	7/11/2012	Montecito Creek Flood Control Debris Basin E of Hot Springs Rd, N of 101 Fwy	Mont	Ibarra	Vectobac G	1.0 lb
357	7/11/2012	Freshwater pond/ditch on Ocean Meadows GC, W. of Storke Rd.	Goleta	Ibarra	Vectobac G	.2 lb
358	7/11/2012	Freshwater pond/ditch on Ocean Meadows GC, W. of Storke Rd.	Goleta	Ibarra	Natular XRT	.352 lb
359	7/11/2012	Creek/marsh at Evergreen Park, Evergreen Dr and Cathedral Oaks Rd., Goleta	Goleta	Cram	Vectobac G	10.5 lbs
360	7/11/2012	Ditch on N side of RR track E of Calle Cesar Chavez, S of El Estero Water Trtmnt Pond	SB	Sharp	Vectobac G	5.0 lbs
361	7/12/2012	Drains/ditch at Covington Way x Camino Laguna Vista , Goleta	Goleta	Cram	Natular XRT	.352 lb
362	7/12/2012	Lake Los Carneros, inlet at Covington Way x Camino Venturoso, Goleta	Goleta	Cram	Vectobac G	2.0 lbs
363	7/12/2012	Mesa Creek at Mesa Park, Elise Way off Meigs Rd., Santa Barbara	SB	Sharp	Vectobac G	.4 lb
364	7/12/2012	Arroyo Hondo Park (Mira Canon Lane x Carrillo St.)-drain outlet/creek	SB	Sharp	Vectobac G	.04 lb
365	7/12/2012	Creek running through SB City College West Campus, Cliff Drive to Shoreline Drive	SB	Sharp	Vectobac G	5.0 lbs
366	7/13/2012	Montecito Creek N of East Valley Rd. at Riven Rock estates	Mont	Ibarra	Vectobac G	1.0 lb
367	7/13/2012	Creek S of Camino Viejo, W of Sycamore Canyon Rd, Montecito	Mont	Ibarra	Vectobac G	2.5 lbs
368	7/13/2012	Drainage ditch on UCSB Campus near Pkng Lot 29	UCSB	Schultz	Vectobac G	.05 lb
369	7/13/2012	Drain at NE corner of Pkng Lot E of Stadium Road, UCSB	UCSB	Schultz	Vectobac G	.05 lb
370	7/13/2012	Stormwater management wetlands/bioswales at corner of El Colegio and Los Carneros	UCSB	Schultz	Vectobac G	2.0 lbs
371	7/16/2012	Flood Control ditch N of Calle Real, E of Ellwood Station Rd., Goleta	Goleta	Cram	Vectobac G	2.0 lbs
372	7/16/2012	Sump pump at vacant lot, 118 State St., Santa Barbara	SB	Sharp	Natular XRT	.088 lb
373	7/17/2012	Willow/Tule floodwater area at Girsh Park-StorkexPhelps Rds.	Goleta	Ibarra	Vectobac G	.5 lb

**Mosquito and Vector Management District of Santa Barbara County
Larvicide Treatments to Waters of the United States (2012)**

374	7/17/2012	Tecolote Creek from Vereda del Ciervo to Calle Real, Rancho Embarcadero, Goleta	Goleta	Cram	Vectobac G	17.0 lbs
375	7/17/2012	Arroyo Burro Creek S of Cliff Dr., Santa Barbara	SB	Sharp	Vectobac G	3.0 lbs
376	7/18/2012	Impounded water from broken pipe, N of 1525 Las Tunas Rd., Montecito	Mont	Ibarra	Natular XRT	.088 lb
377	7/18/2012	Ditch at entrance of SY Ranch, 900 San Ysidro Lane, Montecito	Mont	Ibarra	Natular XRT	.088 lb
378	7/18/2012	Creek at 749 San Ysidro Rd., Montecito	Mont	Ibarra	Vectobac G	2.0 lbs
379	7/18/2012	Catch basins along San Ricardo Drive, S of Calle Luardo, N of San Lorenzo Dr., Goleta	Goleta	Ibarra	Altosid pellets	.01 lb
380	7/18/2012	Ditch between San Marcos HS Football Stadium and RR tracks, NE corner of camp	Goleta	Ibarra	Natular XRT	.44 lb
381	7/18/2012	Catch basins at end of Post Ave. and June Ave., Carpinteria	Carp	Cram	Natular XRT	.176 lb
382	7/18/2012	Flood Control ditch N of 101 Fwy, from Linden Ave. to Chaney Ave., Carpinteria	Carp	Cram	Vectobac G	3.5 lbs
383	7/18/2012	Ditch/bioswale at 484 Barker Pass Rd., Montecito	Mont	Sharp	Vectobac G	2.0 lbs
384	7/20/2012	Ditch along both side of RR tracks, S of 101 Fwy, W of Apple St., Carpinteria	Carp	Cram	Vectobac G	9.0 lbs
385	7/23/2012	Atascadero Creek channel N of Calle Real and E of El Sueno Rd., Goleta	Goleta	Ibarra	Vectobac G	6.0 lbs
386	7/23/2012	Atascadero Creek channel at Hwy 154 and Cathedral Oaks Rd., Goleta	Goleta	Ibarra	Vectobac G	.3 lb
387	7/23/2012	Atascadero Creek channel at Calle Real and El Sueno Rd., Goleta	Goleta	Ibarra	Vectobac G	1.0 lb
388	7/23/2012	Flood Control Channel N of Berkeley Rd, between Arundel Rd. and Wakefield Rd.	Goleta	Ibarra	Vectobac G	2.0 lbs
389	7/23/2012	Concrete ditch N of Encina Rd., E of Fairview Ave. @ "New Horizons Sr. Housing"	Goleta	Ibarra	Vectobac G	.5 lb
390	7/23/2012	Concrete channel behind library at 500 N. Fairview Rd., Goleta	Goleta	Cram	Vectobac G	.2 lb
391	7/23/2012	Las Vegas Creek N of La Goleta Rd., W of Fairview Ave., Goleta	Goleta	Cram	Vectobac G	2.0 lbs
392	7/23/2012	Sump pumps at Drive-In theater at South end of Kellogg Ave.	Goleta	Cram	Natular XRT	.176 lb
393	7/24/2012	Freshwater marsh E of Storke Rd., N of Willow Grove Ave., Goleta	Goleta	Cram	Vectobac G	6.0 lbs
394	7/25/2012	Andree Clark Bird Refuge-1400 Cabrillo Blvd.	SB	Sharp	Vectobac G	95.0 lbs
395	7/27/2012	Tule pond at Chumash Park on Ventana Dr. in Pismo Beach	PISMO	Ibarra	Vectobac G	15.0 lbs
396	7/27/2012	Pismo Lake Ecological Reserve, N 4th Street	PISMO	Ibarra	Vectobac G	60.0 lbs
397	7/27/2012	Pismo Creek N of 101 Fwy, between Ocean View Ave and Bello St.	PISMO	Ibarra	Vectobac G	2.0 lbs
398	7/27/2012	Lagoon/Creek/Marsh at Oceano Campgrounds, Pismo Beach	PISMO	Ibarra	Vectobac G	4.0 lbs
399	7/30/2012	Bioswales on UCSB Campus at San Clemente Dorms	UCSB	Ibarra	Vectobac G	1.0 lb
400	7/30/2012	Ditch/drains at Facilities Mngmnt/Envtl Health Srvc, UCSB	UCSB	Ibarra	Vectobac G	.3 lb
401	7/30/2012	Storm drain on lawn east of UCSB police station, Mesa Rd.	UCSB	Ibarra	Vectobac G	.02 lb
402	7/30/2012	Drainage ditch on UCSB Campus near Pkng Lot 29	UCSB	Ibarra	Vectobac G	.1 lb
403	7/30/2012	Ditch on E side of Raytheon property at Hollister Ave. x Robin Hill Rd.	Goleta	Cram	Vectobac G	.5 lb
404	7/30/2012	Ditch along Old Coast Highway, S of Montecito Country Club	Mont	Sharp	Vectobac G	1.0 lb
405	8/1/2012	Ditch along both sides of RR tracks, S of 101 Fwy, E of Sand Point Dr., Carpinteria	Carp	Schultz	Vectobac G	4.0 lbs
406	8/1/2012	Ditch along RR tracks W of Estero Way, Carpinteria Salt Marsh	Carp	Schultz	Vectobac G	3.0 lbs
407	8/1/2012	Carpinteria Salt Marsh, SW of Estero Way x Carpinteria Ave.	Carp	Schultz	Vectobac G	2.5 lbs

**Mosquito and Vector Management District of Santa Barbara County
Larvicide Treatments to Waters of the United States (2012)**

408	8/1/2012	Carpinteria Salt Marsh, bulldozer tracks W of Estero Way	Carp	Schultz	Vectobac G	15.5 lbs
409	8/1/2012	Salt Marsh habitat on SB Airport property, off dirt road SW of Runway 15R/33L	SBAIR	Sharp	Vectobac G	2.0 lbs
410	8/1/2012	Polluted ditch/pools near mobile home park near junction of 154 Hwy/101 Fwy	Goleta	Ibarra	Natular XRT	.176 lb
411	8/2/2012	Spring and small pond NE of Cocopah Dr. and Naranjo Dr.	Goleta	Ibarra	Vectobac G	.5 lb
412	8/2/2012	Drain at corner of home at 859 Cieneguitas Rd., Goleta	Goleta	Ibarra	Vectobac G	.02 lb
413	8/2/2012	Ditch near RR tracks W of Dump Rd. on ARCO property, S of Carpinteria Ave.	Carp	Cram	Vectobac G	2.0 lbs
414	8/2/2012	Flood control channel at Sandpiper MHP, Via Real, Carpinteria	Carp	Cram	Vectobac G	1.0 lb
415	8/2/2012	Ditch and two catch basins at N. end of Carp Ave.-turnabout	Carp	Cram	Vectobac G	.25 lb
416	8/2/2012	Ditch along W side of Santa Ynez Ave. at Camino Real Apts., Carpinteria	Carp	Cram	Vectobac G	.5 lb
417	8/2/2012	Lawn Drain behind patio at 4519 Carpinteria Ave.	Carp	Cram	Vectobac G	.25 lb
418	8/2/2012	Construction area N of Via Real, W of Lomita Lane, Carpinteria	Carp	Cram	Vectobac G	.5 lb
419	8/2/2012	Ditch behind Goleta Rec. building, near Hollister and San Antonio Rd.	Goleta	Sharp	Vectobac G	2.0 lbs
420	8/2/2012	Mission Creek W of Carrillo St between 101 Fwy and Castillo St.	SB	Sharp	Vectobac G	2.0 lbs
421	8/3/2012	Ditch in front of home at 4225 Via Presado, Hope Ranch, Santa Barbara	HOPE	Ibarra	Natular XRT	.088 lb
422	8/3/2012	Drain in front of home at 4621 Via Roblada, Hope Ranch, Santa Barbara	HOPE	Ibarra	Natular XRT	.088 lb
423	8/3/2012	Ditch in front of home at 1520 Roble Drive, Hope Ranch, Santa Barbara	HOPE	Ibarra	Natular XRT	.088 lb
424	8/3/2012	Ditch behind Goleta Rec. building, near Hollister and San Antonio Rd.	Goleta	sharp	Natular XRT	.88 lb
425	8/3/2012	Old San Jose Creek channel between Pine Ave. and Rutherford, S of Hollister Ave	Goleta	Sharp	Vectobac G	3.0 lbs
426	8/3/2012	Freshwater Marsh/Pond at Patterson/Shoreline Dr.	Goleta	Sharp	Vectobac G	3.0 lbs
427	8/3/2012	Freshwater Marsh/Pond at Patterson/Shoreline Dr.	Goleta	Sharp	Natular XRT	.88 lb
428	8/3/2012	Old Atascadero Creek channel at Patterson Ave./Shoreline Dr., Goleta	Goleta	Sharp	Vectobac G	2.0 lbs
429	8/3/2012	Atascadero Creek SW of Hollister Ave. x Puente Dr.	Goleta	Sharp	Vectobac G	2.0 lbs
430	8/3/2012	Carpinteria Salt Marsh, Ditch along RR tracks E. of Sand Point Rd.	Carp	Sharp	Vectobac G	8.0 lbs
431	8/6/2012	Sycamore Creek, W of Santa Barbara Zoo, N or Cabrillo Blvd to 101 Fwy	SB	Sharp	Vectobac G	10.0 lbs
432	8/7/2012	Freshwater Marsh at Storke Ranch, near High Grove Ave	Goleta	Cram	Vectobac G	1.5 lbs
433	8/7/2012	Culverts and drains along path from pkg lot to beach at Lookout Park, Summerl	SUMLD	Cram	Vectobac G	.5 lb
434	8/7/2012	Drain NW of Goleta West Sanitary District, on Fish and Game property, Goleta	Goleta	Sharp	Vectobac G	.2 lb
435	8/7/2012	Creek NW of Modoc Road at Las Positas Rd., Santa Barbara	SB	Sharp	Vectobac G	3.0 lbs
436	8/7/2012	Bioswales at Pine Street, N of Modoc Rd., S of 101 Fwy	Goleta	Sharp	Natular XRT	.088 lb
437	8/7/2012	Creek running through Bohnett Park (San Pascual St. x Sola St.), Santa Barbara	SB	Sharp	Vectobac G	4.0 lbs
438	8/7/2012	Creek running through SB City College East Campus, Cliff Drive to Shoreline Drive	SB	Sharp	Vectobac G	4.0 lbs
439	8/8/2012	Oceano Dunes Wetland/tule marsh at Highway 1 x Grand Ave., Oceano	PISMO	Learned	Vectobac G	680.0 lbs
440	8/8/2012	Freshwater Marsh, "Tule Pond" NE of Laundry Rd., S of Tecolotito Crk Channel, S	SBAIR	Ibarra	Altosid XR Brique	.8 lb
441	8/8/2012	Ditches along SB Airport fenceline, access from Laundry Rd.	SBAIR	Ibarra	Vectobac G	.5 lb

**Mosquito and Vector Management District of Santa Barbara County
Larvicide Treatments to Waters of the United States (2012)**

442	8/8/2012	Montecito Creek Flood Control Debris Basin E of Hot Springs Rd, N of 101 Fwy	Mont	Ibarra	Vectobac G	1.0 lb
443	8/8/2012	Montecito Creek Flood Control Debris Basin E of Hot Springs Rd, N of 101 Fwy	Mont	Ibarra	Natular XRT	.088 lb
444	8/8/2012	Drains at corner of Anacapa St. x Cabrillo Blvd., Santa Barbara	SB	Sharp	Natular XRT	.176 lb
445	8/8/2012	Water impounded at gutter in front of 1114 and 1120 Del Mar, N of Shoreline Dr	SB	Sharp	Vectobac G	.2 lb
446	8/8/2012	Mouth of Creek at Shoreline Park, Shoreline Dr. Santa Barbara	SB	Sharp	Vectobac G	.5 lb
447	8/8/2012	Roadside ditch along E side of Las Positas Rd., N of Elings Park and Portesuello Av	Goleta	Sharp	Vectobac G	1.0 lb
448	8/8/2012	Arroyo Hondo Park (Mira Canon Lane x Carrillo St.)-drain outlet/creek	SB	Sharp	Natular XRT	.176 lb
449	8/9/2012	Irrigation ditch along Glen Annie Rd, Goleta, N of Cathedral Oaks	Goleta	Ibarra	Vectobac G	2.0 lbs
450	8/9/2012	Debris basin E of Maria Ygnacio Ln, N of Via Regina, Goleta	Goleta	Ibarra	Vectobac G	1.5 lbs
451	8/9/2012	Flood Control pond/ditch at 1296 Cravens Lane, 93013	Carp	Sharp	Vectobac G	2.0 lbs
452	8/9/2012	Drain/Catch basins at Colorama nursery, Via Real, Carpinteria	Carp	Sharp	Vectobac G	1.0 lb
453	8/13/2012	Tecolote Creek from Vereda del Ciervo to Vereda Leyenda, Rancho Embarcadero	Goleta	Cram	Vectobac G	5.0 lbs
454	8/13/2012	Sycamore Creek, W of Santa Barbara Zoo, N or Cabrillo Blvd to 101 Fwy	SB	Sharp	Vectobac G	5.0 lbs
455	8/14/2012	Drain outlet along Cathedral Oaks Rd, E of Camino del Remedio, Goleta	Goleta	Ibarra	Vectobac G	.5 lb
456	8/14/2012	Ditch/creek N and S of Via Lemora, E of Fairview Ave., Goleta	Goleta	Ibarra	Vectobac G	.5 lb
457	8/14/2012	Flood Control Channel N of Berkeley Rd, between Arundel Rd. and Wakefield Rd.	Goleta	Ibarra	Vectobac G	.75 lb
458	8/14/2012	Concrete ditch N of Encina Rd., E of Fairview Ave. @ "New Horizons Sr. Housing"	Goleta	Ibarra	Vectobac G	.5 lb
459	8/14/2012	Drainage ditches at "The Grove" condos at Hollister x Pebble Beach Dr, Goleta	Goleta	Cram	Vectobac G	.5 lb
460	8/14/2012	Devereux Creek at end of Coronado Dr.	Goleta	Cram	Vectobac G	1.0 lb
461	8/14/2012	Concrete ditch S of Hollister Rd. between Cannon Green and Pacific Oaks Rd., Go	Goleta	Cram	Vectobac G	1.5 lbs
462	8/14/2012	Andree Clark Bird Refuge-1400 Cabrillo Blvd.	SB	Sharp	Vectobac G	125.0 lbs
463	8/15/2012	Slough at mouth of Tecolote Creek, E of Bacara Resort, Goleta	Goleta	Cram	Vectobac G	.75 lb
464	8/15/2012	Tecolote Creek from Vereda Leyenda to Calle Real, Rancho Embarcadero, Goleta	Goleta	Cram	Vectobac G	24.0 lbs
465	8/15/2012	Construction area N of Via Real, W of Lomita Lane, Carpinteria	Carp	Sharp	Vectobac G	.5 lb
466	8/15/2012	Carpinteria Creek from Foothill Rd. to 101 Fwy, 93013	Carp	Sharp	Vectobac G	4.0 lbs
467	8/16/2012	Laguna Creek Flood Control Channel from Yanonali St. to RR tracks	SB	Sharp	Vectobac G	10.0 lbs
468	8/16/2012	Creek running through SB City College East Campus, Cliff Drive to Shoreline Drive	SB	Sharp	Vectobac G	3.0 lbs
469	8/17/2012	Creek at N end of Lou Dillon Lane off Salinas Ave, Santa Barbara	SB	Sharp	Vectobac G	.5 lb
470	8/17/2012	Construction area N of Via Real, W of Lomita Lane, Carpinteria	Carp	Sharp	Vectobac G	.01 Gal
471	8/20/2012	Carpinteria Salt Marsh, bulldozer tracks E. of Sand Point Rd. x S. of RR tracks	Carp	Cram	Vectobac G	12.0 lbs
472	8/20/2012	Carpinteria Salt Marsh, Ditch along RR tracks E. of Sand Point Rd.	Carp	Cram	Vectobac G	14.0 lbs
473	8/20/2012	Carpinteria Salt Marsh, Sand Point Rd. x RR tracks	Carp	Cram	Vectobac G	7.0 lbs
474	8/20/2012	Carpinteria Salt Marsh, bulldozer tracks W of Estero Way	Carp	Cram	Vectobac G	6.0 lbs
475	8/20/2012	Carpinteria Salt Marsh, SW of Estero Way x Carpinteria Ave.	Carp	Cram	Vectobac G	4.0 lbs

**Mosquito and Vector Management District of Santa Barbara County
Larvicide Treatments to Waters of the United States (2012)**

476	8/21/2012	Creek W Las Positas Rd. from Modoc Rd. to Cliff Dr., Santa Barbara	SB	Sharp	Vectobac G	4.0 lbs
477	8/22/2012	Ditch along Old Coast Highway, S of Montecito Country Club	Mont	Sharp	Vectobac G	2.0 lbs
478	8/23/2012	Atascadero Creek at El Sueno Rd/Calle Real, N to Rancho SB Mobile Homes, Goleta	Goleta	Ibarra	Vectobac G	7.0 lbs
479	8/23/2012	Ditch at NE corner of San Vicente Mobile Homes, Hwy 154 and Cathedral Oaks Rd	Goleta	Ibarra	Vectobac G	.3 lb
480	8/23/2012	Cieneguitas Creek/ditches on N side of Calle Real, E of Old Mill Rd., Goleta	Goleta	Ibarra	Vectobac G	2.0 lbs
481	8/23/2012	Pumps/drainage at Por la Mar Nursery off of Patterson Ave., Goleta	Goleta	Ibarra	Natular XRT	.176 lb
482	8/23/2012	Catch basins along San Ricardo Drive, S of Calle Luardo, N of San Lorenzo Dr., Goleta	Goleta	Ibarra	Natular XRT	.088 lb
483	8/23/2012	Confluence of Las Vegas Creek and San Pedro Creek at Hollister Ave. x Fairview Ave	Goleta	Cram	Vectobac G	2.0 lbs
484	8/23/2012	Arroyo Burro Creek N of Cliff Dr., W of Las Positas, Santa Barbara	SB	Sharp	Vectobac G	4.0 lbs
485	8/24/2012	Tule pond at Chumash Park on Ventana Dr. in Pismo Beach	PISMO	Ibarra	Vectobac G	11.0 lbs
486	8/24/2012	Pismo Lake Ecological Reserve, N 4th Street	PISMO	Ibarra	Vectobac G	4.0 lbs
487	8/24/2012	Pismo Creek N of 101 Fwy, between Ocean View Ave and Bello St.	PISMO	Ibarra	Vectobac G	5.0 lbs
488	8/24/2012	Lagoon/Creek/Marsh at Oceano Campgrounds, Pismo Beach	PISMO	Ibarra	Vectobac G	2.5 lbs
489	8/27/2012	Las Vegas Creek at Franklin Ranch Rd., N. of La Goleta Rd.	Goleta	Ibarra	Vectobac G	10.0 lbs
490	8/27/2012	Ditch in front of home at 1520 Roble Drive, Hope Ranch, Santa Barbara	HOPE	Ibarra	Vectobac G	.1 lb
491	8/28/2012	Buena Vista Creek, from S of Birnam Wood Dr. to Forge Rd., Montecito	Mont	Ibarra	Vectobac G	4.0 lbs
492	8/28/2012	Ditch/drainage at Facilities Mngmnt/Envtl Health Srvcs, UCSB	UCSB	Ibarra	Vectobac G	.4 lb
493	8/28/2012	Storm drain on lawn east of UCSB police station, Mesa Rd.	UCSB	Ibarra	Vectobac G	.02 lb
494	8/28/2012	Bioswales on UCSB Campus at San Clemente Dorms	UCSB	Ibarra	Vectobac G	1.5 lbs
495	8/28/2012	Devereux Creek at end of Coronado Dr.	Goleta	Cram	Vectobac G	1.0 lb
496	8/28/2012	Channel on S.side of SB airport property, near Mesa Rd/J Rd. S	SBAIR	Cram	Vectobac G	12.0 lbs
497	8/28/2012	Mouth of Creek at Shoreline Park, Shoreline Dr. Santa Barbara	SB	Sharp	Natular XRT	.176 lb
498	8/28/2012	Creek running through SB City College West Campus, Cliff Drive to Shoreline Drive	SB	Sharp	Vectobac G	5.0 lbs
499	8/28/2012	Water impounded at gutter in front of 1114 and 1120 Del Mar, N of Shoreline Drive	SB	Sharp	Vectobac G	.01 lb
500	8/29/2012	Drain at corner of home at 859 Cieneguitas Rd., Goleta	Goleta	Ibarra	Vectobac G	.02 lb
501	8/29/2012	Spring and small pond NE of Cocopah Dr. and Naranjo Dr.	Goleta	Ibarra	Vectobac G	.5 lb
502	8/29/2012	Irrigation ditch along Glen Annie Rd, Goleta, N of Cathedral Oaks	Goleta	Ibarra	Vectobac G	2.5 lbs
503	8/29/2012	Mesa Creek at Mesa Park, Elise Way off Meigs Rd., Santa Barbara	SB	Sharp	Vectobac G	3.0 lbs
504	8/30/2012	Carpinteria Salt Marsh, Sand Point Rd. x RR tracks	Carp	Sharp	Vectobac G	8.0 lbs
505	8/30/2012	Carpinteria Salt Marsh, bulldozer tracks E. of Sand Point Rd. x S. of RR tracks	Carp	Sharp	Vectobac G	4.0 lbs
506	8/30/2012	Ditch along both side of RR tracks, S of 101 Fwy, W of Apple St., Carpinteria	Carp	Sharp	Vectobac G	8.0 lbs
507	8/30/2012	Carpinteria Salt Marsh, bulldozer tracks W of Estero Way	Carp	Sharp	Vectobac G	8.0 lbs
508	8/30/2012	Carpinteria Salt Marsh, adjacent to Sandyland Cove Rd., North of Del Mar Ave	Carp	Sharp	Vectobac G	10.0 lbs
509	9/4/2012	Brackish water marsh N. of Mesa Rd, E. of Los Carneros Rd.	Goleta	Sharp	Vectobac G	1.0 lb

**Mosquito and Vector Management District of Santa Barbara County
Larvicide Treatments to Waters of the United States (2012)**

510	9/4/2012	Arroyo Burro Creek N of Cliff Dr., W of Las Positas, Santa Barbara	SB	Sharp	Vectobac G	6.0 lbs
511	9/4/2012	Roadside ditch along E side of Las Positas Rd., N of Elings Park and Portesuello Av	Goleta	Sharp	Vectobac G	1.0 lb
512	9/4/2012	Creek/drainage at east end of Banner Ave., Summerland	SUMLD	Cram	Vectobac G	3.0 lbs
513	9/4/2012	Debris/Catch basin at Evans Ave. x Calle Culebra, Summerland	SUMLD	Cram	Vectobac G	1.0 lb
514	9/4/2012	Montecito Creek at East Valley Rd. and Flood Control Debris Basin at Olive Mill R	Mont	Ibarra	Vectobac G	1.75 lbs
515	9/4/2012	Creek behind homes on Camino Viejo	Mont	Ibarra	Vectobac G	2.0 lbs
516	9/4/2012	Willow/Tule floodwater area at Girsh Park-StorkexPhelps Rds.	Goleta	Ibarra	Vectobac G	1.0 lb
517	9/4/2012	Catch basins at Abrego Rd. and Pasado Rd. off Camino Pescadero, Isla Vista	IV	Ibarra	Natular XRT	.176 lb
518	9/4/2012	Catch basins at Abrego Rd. and Trigo Rd. off Camino del Sur, Isla Vista	IV	Ibarra	Natular XRT	.264 lb
519	9/7/2012	Creek NW of Modoc Road at Las Positas Rd., Santa Barbara	SB	Sharp	Vectobac G	5.0 lbs
520	9/7/2012	Sump drain at 850 Carrillo St., Santa Barbara	SB	Sharp	Natular XRT	.088 lb
521	9/7/2012	Tecolote Creek from Vereda del Ciervo to Calle Real, Rancho Embarcadero, Golet	Goleta	Cram	Vectobac G	21.0 lbs
522	9/10/2012	Sycamore Creek, W of Santa Barbara Zoo, N or Cabrillo Blvd to 101 Fwy	SB	Sharp	Vectobac G	11.0 lbs
523	9/10/2012	Seasonal creek behind home on Woodland Dr. at Alston Rd., Santa Barbara	SB	Sharp	Vectobac G	1.0 lb
524	9/10/2012	Seasonal creek behind home on Woodland Dr. at Alston Rd., Santa Barbara	SB	Sharp	Natular XRT	.352 lb
525	9/10/2012	Ditch beginning at corner of Via Los Padres and Via Los Santos, Goleta	Goleta	Ibarra	Vectobac G	.3 lb
526	9/10/2012	Debris basin W of Maria Ygnacio Ln, N of Via Regina, Goleta	Goleta	Ibarra	Vectobac G	1.5 lbs
527	9/11/2012	Creek running through SB City College West Campus, Cliff Drive to Shoreline Driv	SB	Sharp	Vectobac G	8.0 lbs
528	9/11/2012	Drain outlet along Cathedral Oaks Rd, E of Camino del Remedio, Goleta	Goleta	Ibarra	Natular XRT	.352 lb
529	9/11/2012	Ditch/creek N and S of Via Lemora, E of Fairview Ave., Goleta	Goleta	Ibarra	Vectobac G	.5 lb
530	9/11/2012	Flood Control Channel N and S of Berkeley Rd, between Arundel Rd. and Wakefie	Goleta	Ibarra	Vectobac G	1.0 lb
531	9/11/2012	Concrete ditch N of Encina Rd., E of Fairview Ave. @ "New Horizons Sr. Housing"	Goleta	Ibarra	Vectobac G	.5 lb
532	9/11/2012	Drain at corner of home at 859 Cieneguitas Rd., Goleta	Goleta	Ibarra	Natular XRT	.088 lb
533	9/12/2012	Andree Clark Bird Refuge-1400 Cabrillo Blvd.	SB	Sharp	VectoLex CG	116.0 lbs
534	9/13/2012	Creek at N end of Lou Dillon Lane off Salinas Ave, Santa Barbara	SB	Sharp	Vectobac G	.5 lb
535	9/13/2012	Freshwater Marsh at Storke Ranch, near High Grove Ave	Goleta	Cram	Vectobac G	3.0 lbs
536	9/13/2012	Small section of creek at Sheffield Dr., N of 101 Fwy at Fernald Point, Montecito	Mont	Ibarra	Vectobac G	.5 lb
537	9/13/2012	Irrigation ditch along Glen Annie Rd, Goleta, N of Cathedral Oaks	Goleta	Ibarra	Vectobac G	2.0 lbs
538	9/14/2012	Creek/marsh at Evergreen Park, Evergreen Dr and Cathedral Oaks Rd., Goleta	Goleta	Cram	Vectobac G	12.0 lbs
539	9/17/2012	Arroyo Hondo Park (Mira Canon Lane x Carrillo St.)-drain outlet/creek	SB	Sharp	Vectobac G	1.0 lb
540	9/17/2012	Ditch along Old Coast Highway, S of Montecito Country Club	Mont	Sharp	Vectobac G	.5 lb
541	9/18/2012	Carpinteria Creek, from 101 Fwy North to Foothill Rd.	Carp	Sharp	Vectobac G	5.0 lbs
542	9/19/2012	Creek running through SB City College East Campus, Cliff Drive to Shoreline Drive	SB	Sharp	Vectobac G	2.0 lbs
543	9/19/2012	Ditch and two catch basins at N. end ofCarp Ave.-turnabout	Carp	Cram	Vectobac G	.25 lb

**Mosquito and Vector Management District of Santa Barbara County
Larvicide Treatments to Waters of the United States (2012)**

544	9/19/2012	Ditch near RR tracks W of Dump Rd. on ARCO property, S of Carpinteria Ave.	Carp	Cram	Vectobac G	.5 lb
545	9/19/2012	Ditch at Viola Fields (Carp. Ave x Bailard Ave.)	Carp	Cram	Vectobac G	1.0 lb
546	9/19/2012	Ditch/drains at Facilities Mngmnt/Envtl Health Srvcs, UCSB	UCSB	Ibarra	Vectobac G	.3 lb
547	9/19/2012	Drain at NE corner of Pkng Lot E of Stadium Road, UCSB	UCSB	Ibarra	Vectobac G	.5 lb
548	9/19/2012	Bioswales on UCSB Campus at San Clemente Dorms	UCSB	Ibarra	Vectobac G	1.5 lbs
549	9/19/2012	Montecito Creek Flood Control Debris Basin E of Hot Springs Rd, N of 101 Fwy	Mont	Ibarra	Vectobac G	1.0 lb
550	9/20/2012	Drains on Stacy Lane, off La Cumbre Rd., Santa Barbara	SB	Sharp	Altosid pellets	.1 lb
551	9/20/2012	Atascadero Creek, S. of Hollister Ave, between Patterson Ave. and Puente Dr.	Goleta	Sharp	Vectobac G	3.0 lbs
552	9/20/2012	Slough at mouth of Tecolote Creek, E of Bacara Resort, Goleta	Goleta	Cram	Vectobac G	.5 lb
553	9/20/2012	Ditch at NE corner of San Vicente Mobile Homes, Hwy 154 and Cathedral Oaks Rd	Goleta	Ibarra	Vectobac G	1.0 lb
554	9/20/2012	Atascadero Creek at El Sueno Rd/Calle Real	Goleta	Ibarra	Vectobac G	7.0 lbs
555	9/20/2012	Atascadero Creek at El Sueno Rd/Calle Real	Goleta	Ibarra	Natular XRT	.88 lb
556	9/21/2012	Carpinteria Salt Marsh, bulldozer tracks E. of Sand Point Rd. x S. of RR tracks	Carp	Sharp	Vectobac G	16.0 lbs
557	9/21/2012	Ditch along both side of RR tracks, S of 101 Fwy, W of Apple St., Carpinteria	Carp	Sharp	Vectobac G	13.0 lbs
558	9/21/2012	Carpinteria Salt Marsh, Sand Point Rd. x RR tracks	Carp	Sharp	Vectobac G	8.0 lbs
559	9/21/2012	Carpinteria Salt Marsh, adjacent to Sandyland Cove Rd., North of Del Mar Ave	Carp	Sharp	Vectobac G	7.0 lbs
560	9/21/2012	Las Vegas Creek S of La Goleta Rd., W of Fairview Ave., Goleta	Goleta	Cram	Vectobac G	1.0 lb
561	9/21/2012	Carpinteria Salt Marsh, bulldozer tracks W of Estero Way	Carp	Ibarra	Vectobac G	17.0 lbs
562	9/21/2012	Carpinteria Salt Marsh, SW of Estero Way x Carpinteria Ave.	Carp	Ibarra	Vectobac G	6.0 lbs
563	9/21/2012	Carpinteria Salt Marsh, rainwater source W of Santa Monica Creek Channel	Carp	Ibarra	Vectobac G	14.0 lbs
564	9/24/2012	Atascadero Creek at El Sueno Rd/Calle Real	Goleta	Ibarra	Vectobac G	1.5 lb
565	9/25/2012	Creek W Las Positas Rd. from Modoc Rd. to Cliff Dr., Santa Barbara	SB	Sharp	Vectobac G	4.0 lbs
566	9/25/2012	Roadside ditch along E side of Las Positas Rd., N of Elings Park and Portesuella Av	Goleta	Sharp	Vectobac G	.5 lb
567	9/25/2012	Cieneguitas Creek/ditches on N side of Calle Real, E of Old Mill Rd., Goleta	Goleta	Ibarra	Vectobac G	2.5 lbs
568	9/25/2012	Spring and small pond NE of Cocopah Dr. and Naranja Dr.	Goleta	Ibarra	Vectobac G	.5 lb
569	9/25/2012	Las Palmas Creek from Paloma Dr. to Las Olas Dr., Hope Ranch, Santa Barbara	HOPE	Ibarra	Vectobac G	10.0 lbs
570	9/26/2012	Ditch on N side of RR track E of Calle Cesar Chavez, S of El Estero Water Trtmnt P	SB	Sharp	Vectobac G	1.0 lb
571	9/26/2012	Devereux Creek at end of Coronado Dr.	Goleta	Cram	Vectobac G	1.0 lb
572	9/26/2012	Irrigation ditch along Glen Annie Rd, Goleta, N of Cathedral Oaks	Goleta	Ibarra	Vectobac G	2.0 lbs
573	9/26/2012	Lakes/stream/wetland on Glen Annie GC off Cathedral Oaks Rd., Goleta	Goleta	Ibarra	Vectobac G	2.5 lbs
574	9/27/2012	5' deep drain at 868 HighlandAve. x 855 Miramonte Dr. SB 93109	SB	Sharp	Natular XRT	.088 lb
575	9/27/2012	Buena Vista Creek, from S of Birnam Wood Dr. to Forge Rd., Montecito	Mont	Ibarra	Vectobac G	4.0 lbs
576	9/28/2012	Sycamore Creek, W of Santa Barbara Zoo, N or Cabrillo Blvd to 101 Fwy	SB	Sharp	Vectobac G	4.0 lbs
577	9/28/2012	Concrete ditch S of Hollister Rd. between Cannon Green and Pacific Oaks Rd., Go	Goleta	Cram	Vectobac G	3.0 lbs

**Mosquito and Vector Management District of Santa Barbara County
Larvicide Treatments to Waters of the United States (2012)**

578	9/28/2012	Ditches along SB Airport fenceline, access from Laundry Rd.	SBAIR	Cram	Vectobac G	.5 lb
579	10/3/2012	Ditch behind Goleta Rec. building, near Hollister and San Antonio Rd.	Goleta	Cram	Vectobac G	2.0 lbs
580	10/4/2012	Freshwater Marsh at Storke Ranch, near High Grove Ave	Goleta	Ibarra	Vectobac G	2.5 lbs
581	10/4/2012	Drain opposite 980 Cold Springs Rd, Montecito	Mont	Sharp	Vectobac G	.1 lb
582	10/5/2012	Large ditch on Airport property-access from Laundry Rd.	SBAIR	Ibarra	Vectobac G	.5 lb
583	10/5/2012	Devereux Creek at end of Coronado Dr.	Goleta	Ibarra	Vectobac G	1.5 lbs
584	10/5/2012	Roadside ditch in front of 370 Ellwood Beach Dr., Goleta	Goleta	Ibarra	Vectobac G	.1 lb
585	10/5/2012	Creek near Hollister and Pacific Oaks Rd.	Goleta	Sharp	Vectobac G	2.0 lbs
586	10/8/2012	Ditch and two catch basins at N. end of Carp Ave.-turnabout	Carp	Ibarra	Vectobac G	.2 lb
587	10/8/2012	Lawn Drain behind patio at 4519 Carpinteria Ave.	Carp	Ibarra	BTI Briquets	.0572 lb
588	10/8/2012	Ditch along W side of Santa Ynez Ave. at Camino Real Apts., Carpinteria	Carp	Ibarra	Vectobac G	.1 lb
589	10/8/2012	Sump pump at 1093 Holly Ave, Carpinteria	Carp	Ibarra	Natular XRT	.088 lb
590	10/8/2012	Ditch and drain at Ash Ave. x Dorrance Way, Carpinteria	Carp	Ibarra	Altosid pellets	.01 lb
591	10/8/2012	Ditch near RR tracks W of Dump Rd. on ARCO property, S of Carpinteria Ave.	Carp	Ibarra	Vectobac G	.5 lb
592	10/8/2012	Carpinteria Creek from 101 Fwy S to 8th Street, Carpinteria	Carp	Ibarra	Vectobac G	4.0 lbs
593	10/8/2012	Flood Control ditch N of 101 Fwy, from Linden Ave. to Chaney Ave., Carpinteria	Carp	Ibarra	Vectobac G	3.0 lbs
594	10/8/2012	Drains/ditch at Covington Way x Camino Venturoso, Goleta	Goleta	Ibarra	Vectobac G	1.0 lb
595	10/8/2012	Ditch at Cathedral Oaks Rd. x La Patera Rd., Goleta	Goleta	Ibarra	Natular XRT	.088 lb
596	10/9/2012	Arroyo Hondo Park (Mira Canon Lane x Carrillo St.)-drain outlet/creek	SB	Cram	Vectobac G	1.0 lb
597	10/9/2012	Flood Control ditch N of Calle Real, E of Ellwood Station Rd., Goleta	Goleta	Ibarra	Vectobac G	2.5 lbs
598	10/9/2012	Drainage ditches at "The Grove" condos at Hollister x Pebble Beach Dr, Goleta	Goleta	Ibarra	Vectobac G	.3 lb
599	10/9/2012	Las Palmas Creek at Paloma Dr., Hope Ranch, Santa Barbara	HOPE	Sharp	Vectobac G	2.0 lbs
600	10/9/2012	Arroyo Burro Creek S of Modoc Rd., along E edge of La Cumbre Country Club, Santa Barbara	SB	Sharp	Vectobac G	4.0 lbs
601	10/11/2012	Creek/marsh at Evergreen Park, Evergreen Dr and Cathedral Oaks Rd., Goleta	Goleta	Ibarra	Vectobac G	12.0 lbs
602	10/11/2012	Bioswales on UCSB Campus at San Clemente Dorms	UCSB	Sharp	Vectobac G	2.0 lbs
603	10/12/2012	Drains on W side of Barling Terrace, off Stow Canyon Rd., Goleta	Goleta	Ibarra	Vectobac G	.1 lb
604	10/12/2012	Creek/drainage at east end of Banner Ave., Summerland	SUMLD	Ibarra	Vectobac G	1.5 lbs
605	10/12/2012	Debris/Catch basin at Evans Ave. x Calle Culebra, Summerland	SUMLD	Ibarra	Vectobac G	.5 lb
606	10/12/2012	Sump pump and drain at SW corner of 5335 Debbie Rd., Goleta	Goleta	Ibarra	Natular XRT	.088 lb
607	10/12/2012	Concrete ditch N of Encina Rd., E of Fairview Ave. @ "New Horizons Sr. Housing"	Goleta	Ibarra	Vectobac G	.5 lb
608	10/12/2012	Channel and culvert along frontage road leading to 101 Fwy, N of Lookout Park, Santa Barbara	SUMLD	Ibarra	Vectobac G	.2 lb
609	10/15/2012	Tributary of Devereux Creek at Phelps Rd., Goleta	Goleta	Sharp	Vectobac G	3.0 lbs
610	10/17/2012	Andree Clark Bird Refuge-1400 Cabrillo Blvd.	SB	Cram	Vectobac G	50.0 lbs
611	10/18/2012	Pismo Lake Ecological Reserve, N 4th Street	PISMO	Cram	Vectobac G	50.0 lbs

**Mosquito and Vector Management District of Santa Barbara County
Larvicide Treatments to Waters of the United States (2012)**

612	10/18/2012	Ditches/brackish water pools,North Beach Campground, Pismo Beach	PISMO	Cram	Vectobac G	15.0 lbs
613	10/18/2012	Lagoon/Creek/Marsh at Oceano Campgrounds, Pismo Beach	PISMO	Cram	Vectobac G	3.0 lbs
614	10/18/2012	Ponds/ditch at Pismo State Beach Golf Course "Le Sage Riviera"	PISMO	Cram	Vectobac G	15.0 lbs
615	10/19/2012	Ditch along both side of RR tracks, S of 101 Fwy, W of Apple St., Carpinteria	Carp	Ibarra	Vectobac G	20.0 lbs
616	10/19/2012	Ditch along RR tracks E of Estero Way, Carpinteria Salt Marsh	Carp	Ibarra	Vectobac G	7.5 lbs
617	10/19/2012	Carpinteria Salt Marsh, rainwater source W of Santa Monica Creek Channel	Carp	Sharp	Vectobac G	2.0 lbs
618	10/22/2012	Confluence of Las Vegas Creek and San Pedro Creek at Hollister Ave. x Fairview A	Goleta	Ibarra	Vectobac G	.2 lb
619	10/22/2012	Las Vegas Creek at 101 Fwy just S of Calle Real, Goleta	Goleta	Ibarra	Altosid XR Briquet	.32 lb
620	10/22/2012	Winchester Canyon Creek N of Calle Real	Goleta	Ibarra	Vectobac G	3.0 lbs
621	10/23/2012	Brackish water marsh, "Triangle Basin" NE of Mesa Rd., S of Tecolotito Crk Chann	SBAIR	Ibarra	Altosid XR Briquet	283.2 lbs
622	10/24/2012	Freshwater Marsh, "Tule Pond" NE of Laundry Rd., S of Tecolotito Crk Channel, S	SBAIR	Ibarra	Altosid XR Briquet	106.2 lbs
623	10/24/2012	Brackish/Saltwater marsh SW of Taxiway A/Main Runway, W of "Panama Basin",	SBAIR	Ibarra	Altosid XR Briquet	177.0 lbs
624	10/25/2012	Seasonal Wetland-Los Carneros Rd. and Hollister-"Willow Springs"	Goleta	Ibarra	Altosid pellets	30.02 lbs
625	10/25/2012	Channel on S.side of SB airport property, near Mesa Rd/J Rd. S	SBAIR	Ibarra	Vectobac G	12.0 lbs
626	10/26/2012	Old Atascadero Creek channel at Patterson Ave./Shoreline Dr., Goleta	Goleta	Cram	Altosid XR Briquet	70.8 lbs
627	10/31/2012	Creek running through SB City College East Campus, Cliff Drive to Shoreline Drive	SB	Cram	Vectobac G	4.0 lbs
628	10/31/2012	Willow/Tule floodwater area at Girsh Park-StorkexPhelps Rds.	Goleta	Ibarra	Vectobac G	1.0 lb
629	11/1/2012	Mouth of Creek at Shoreline Park, Shoreline Dr. Santa Barbara	SB	Cram	Vectobac G	.2 lb
630	11/1/2012	Mesa Creek at Mesa Park, Elise Way off Meigs Rd., Santa Barbara	SB	Cram	Vectobac G	2.0 lbs
631	11/1/2012	Arroyo Hondo Park (Mira Canon Lane x Carrillo St.)-drain outlet/creek	SB	Cram	Vectobac G	1.0 lb
632	11/1/2012	Ditch E and W of Sand Point Rd., off Santa Claus Lane, 93013	Carp	Cram	Vectobac G	1.5 lbs
633	11/1/2012	Roadside ditch in front of 370 Ellwood Beach Dr., Goleta	Goleta	Ibarra	Vectobac G	.1 lb
634	11/1/2012	Freshwater Marsh at Storke Ranch, near High Grove Ave	Goleta	Ibarra	Vectobac G	.3 lb
635	11/2/2012	Concrete ditch N of Encina Rd., E of Fairview Ave. @ "New Horizons Sr. Housing"	Goleta	Ibarra	Vectobac G	.2 lb
636	11/2/2012	Tecolote Creek from Vereda Leyenda to Calle Real, Rancho Embarcadero, Goleta	Goleta	Ibarra	Vectobac G	7.0 lbs
637	11/2/2012	Ditch behind Goleta Rec. building, near Hollister and San Antonio Rd.	Goleta	Sharp	Vectobac G	1.0 lb
638	11/2/2012	Devereux Creek on Ocean Meadows Golf Course	Goleta	Sharp	Vectobac G	3.0 lbs
639	11/5/2012	Freshwater Marsh/Pond at Patterson/Shoreline Dr.	Goleta	Cram	Natular T30	15.87 lbs
640	11/6/2012	Tecolote Creek from Vereda del Ciervo to Vereda Leyenda, Rancho Embarcadero	Goleta	Ibarra	Vectobac G	3.0 lbs
641	11/6/2012	Las Palmas Creek from Paloma Dr. to Las Olas Dr., Hope Ranch, Santa Barbara	HOPE	Sharp	Vectobac G	5.0 lbs
642	11/7/2012	Freshwater marsh at corner of Fowler and Moffett Rd.	Goleta	Cram	Altosid Briquets	30.94 lbs
643	11/8/2012	Creek/marsh at Evergreen Park, Evergreen Dr and Cathedral Oaks Rd., Goleta	Goleta	Ibarra	Vectobac G	1.0 lb
644	11/14/2012	Tecolote Creek at Hollister Ave and 101 Fwy, Goleta	Goleta	Ibarra	Vectobac G	1.0 lb
645	11/15/2012	freshwater marsh SW of Gray's Ranch (Vieja Dr.) on More Mesa, Goleta	HOPE	Sharp	Altosid pellets	10.0 lbs

**Mosquito and Vector Management District of Santa Barbara County
Larvicide Treatments to Waters of the United States (2012)**

646	11/19/2012	Arroyo Hondo Park (Mira Canon Lane x Carrillo St.)-drain outlet/creek	SB	Cram	Vectobac G	1.0 lb
647	11/19/2012	Freshwater Marsh W. of Los Carneros Rd., on UCSB Storke Campus	UCSB	Sharp	Altosid pellets	20.0 lbs
648	11/20/2012	Creek/marsh at Evergreen Park, Evergreen Dr and Cathedral Oaks Rd., Goleta	Goleta	Ibarra	Vectobac G	5.5 lbs
649	11/21/2012	Freshwater marshes on SoCalGasCo near Goleta Beach Park	Goleta	Cram	Altosid Briquets	11.9 lbs
650	11/21/2012	Freshwater Marsh E. of Los Carneros Rd., on UCSB Storke Campus	UCSB	Sharp	Altosid pellets	15.0 lbs
651	11/27/2012	Confluence of Las Vegas Creek and San Pedro Creek at Hollister Ave. x Fairview A	Goleta	Ibarra	Vectobac G	.5 lb
652	11/27/2012	Ditch E and W of Sand Point Rd., off Santa Claus Lane, 93013	Carp	Cram	Vectobac G	1.0 lb
653	11/27/2012	Rainwater pools on Fish and Game between Mesa Rd. and SB Airport property	Goleta	Cram	Vectobac G	5.0 lbs
654	12/3/2012	Small ponds at Sylvan Park-Alameda Padre Serra x Dover Lane, Santa Barbara	SB	Cram	Vectobac G	.5 lb
655	12/4/2012	Channel on S.side of SB airport property, near Mesa Rd/J Rd. S	SBAIR	Ibarra	Vectobac G	12.0 lbs
656	12/4/2012	Large ditch on Airport property-access from Laundry Rd.	SBAIR	Ibarra	Vectobac G	1.0 lb
657	12/4/2012	Rainwater pool and ditch at end of Via Jero Dr., Goleta	Goleta	Ibarra	Vectobac G	4.0 lbs
658	12/5/2012	Mesa Creek at Mesa Park, Elise Way off Meigs Rd., Santa Barbara	SB	Cram	Vectobac G	2.0 lbs
659	12/5/2012	Creek running through SB City College E and W Campus, Cliff Drive to Shoreline D	SB	Cram	Vectobac G	4.0 lbs
660	12/5/2012	Ditch and drain at Ash Ave. x Dorrance Way, Carpinteria	Carp	Ibarra	Vectobac G	.7 lb
661	12/5/2012	Drains/ditch/lake inlet at Covington Way x Camino Venturoso, Goleta	Goleta	Ibarra	Vectobac G	1.0 lb
662	12/6/2012	Salt Marsh at Sandspit Loop off 217 Fwy	Goleta	Cram	Vectobac G	25.0 lbs
663	12/6/2012	Roadside ditch along E side of Las Positas Rd., N of Elings Park and Portesuello Av	Goleta	Schultz	Vectobac G	.01 lb
664	12/6/2012	Bioswales/Vernal pools on UCSB Campus, Manzanita Dorms	UCSB	Sharp	Vectobac G	1.0 lb
665	12/6/2012	Bioswales on UCSB Campus at San Clemente Dorms	UCSB	Sharp	Vectobac G	10.0 lbs
666	12/6/2012	Small pond along Stadium Rd. S of Mesa Rd., UCSB	UCSB	Sharp	Vectobac G	.1 lb
667	12/7/2012	Devereux Lagoon on Slough Rd.	UCSB	Sharp	Vectobac G	44.0 lbs
668	12/7/2012	Horse troughs, drain pipes, wetlands at UCSB West Campus Stables	UCSB	Sharp	Vectobac G	9.0 lbs
669	12/7/2012	Devereux Creek on Ocean Meadows Golf Course	Goleta	Sharp	Vectobac G	2.0 lbs
670	12/10/2012	Arroyo Hondo Park (Mira Canon Lane x Carrillo St.)-drain outlet/creek	SB	Schultz	Vectobac G	.3 lb
671	12/10/2012	Freshwater Marsh N of Phelps Rd, E of Storke Rd, Goleta	Goleta	Ibarra	Vectobac G	3.0 lbs
672	12/10/2012	Flood Control ditch N of Calle Real, E of Ellwood Station Rd., Goleta	Goleta	Ibarra	Vectobac G	2.5 lbs
673	12/10/2012	Freshwater Marsh at Storke Ranch, near High Grove Ave	Goleta	Ibarra	Vectobac G	8.0 lbs
674	12/11/2012	Ditch at Viola Fields (Carp. Ave x Bailard Ave.)	Carp	Ibarra	Vectobac G	1.5 lbs
675	12/11/2012	Devereux Creek at end of Coronado Dr., Goleta	Goleta	Ibarra	Vectobac G	.5 lb
676	12/11/2012	Reservoir at 7272 Hollister Ave., Goleta	Goleta	Ibarra	Natular XRT	0.308 lb
677	12/12/2012	SB Zoo (500 Ninos Dr.)--ponds/ditches near Bird Refuge	SB	Schultz	Vectobac G	1.5 lbs
678	12/13/2012	Ditch E and W of Sand Point Rd., off Santa Claus Lane, 93013	Carp	Cram	Vectobac G	1.0 lb
679	12/14/2012	Sump pumps at Drive-In theater at South end of Kellogg Ave.	Goleta	Ibarra	Natular XRT	.176 lb

**Mosquito and Vector Management District of Santa Barbara County
Larvicide Treatments to Waters of the United States (2012)**

680	12/14/2012	Sump pump and drain at SW corner of 5335 Debbie Rd., Goleta	Goleta	Ibarra	Natular XRT	.44 lb
681	12/14/2012	Devereux Creek S of Hollister, from Pebble Beach Dr. to Sandpiper GC, Goleta	Goleta	Ibarra	Vectobac G	6.0 lbs
683	12/17/2012	Seasonal marsh S. of Hollister Ave, E. of Los Carneros Rd.	Goleta	Ibarra	Vectobac G	4.0 lbs
684	12/17/2012	Tributary of Devereux Creek on Ocean Meadows Golf Course	Goleta	Sharp	Vectobac G	35.5 lbs
685	12/18/2012	Creek running through Bohnett Park (San Pascual St. x Sola St.), Santa Barbara	SB	Schultz	Vectobac G	.5 lb
686	12/19/2012	Rainwater pools on Fish and Game between Mesa Rd. and SB Airport property	SBAIR	Cram	Vectobac G	14.0 lbs
687	12/20/2012	Brackish water marsh N. of Mesa Rd, E. of Los Carneros Rd.	Goleta	Cram	Vectobac G	36.0 lbs
688	12/21/2012	Ponds/creek at Rockbridge Rd. and Clover Lane, Montecito	Mont	Schultz	Vectobac G	.2 lb
689	12/21/2012	Western edge of Devereux Lagoon on Slough Rd.	UCSB	Sharp	Vectobac G	14.0 lbs
690	12/26/2012	Ditch behind Goleta Rec. building, near Hollister and San Antonio Rd.	Goleta	Cram	Vectobac G	1.0 lb
691	12/26/2012	Atascadero Creek between Modoc Rd. and Puente Dr., Goleta	Goleta	Cram	Vectobac G	1.5 lbs
692	12/27/2012	Ditch near RR tracks W of Dump Rd. on ARCO property, S of Carpinteria Ave.	Carp	Ibarra	Altosid XR Briquet	.08 lb
693	12/31/2012	Freshwater Marsh on Southside of Modoc Rd.	Goleta	Sharp	Vectobac G	6.0 lbs
694	12/31/2012	Seasonal freshwater marsh on Laundry Rd., N. of Mesa Rd.	SBAIR	Ibarra	Vectobac G	10.0 lbs
		Larvicides Used:				
		Vectobac G granules, EPA Reg. #: 73049-10				
		VectoLex CG granules, EPA Reg. #: 73049-20				
		Altosid pellets, EPA Reg. #: 2724-448				
		Altosid 30-day Briquets, EPA Reg. #: 2724-375				
		Altosid XR Briquets, EPA Reg. #: 2724-421				
		Natular XRT Briquets, EPA Reg. #: 8329-84				
		Natular T30 Briquets, EPA Reg. #: 8329-85				
		Agnique MMF, EPA Reg. #: 53263-28				
		B.T.I. Briquets, EPA Reg. #: 6218-47				

MVMD of Santa Barbara County Application log to accompany NPDES Visual Monitoring Events

Date	Location	Inspector	Material Applied	Amount
2/8/2012	Andree Clark Bird Refuge	Kenny Learned	Vectobac G	90 lb
3/2/2012	Hot Springs Creek at Riven Rock Estates	Karen Schultz	Vectobac G	.8 lb
3/14/2012	Andree Clark Bird Refuge	Kenny Learned	Vectobac G	64 lb
3/29/2012	4410 Cathedral Oaks drain	Karen Schultz	Natular XRT	.088 lb
4/20/2012	6400 block of Hollister habitat of airport marshlands	Karen Schultz	Vectobac G	60 lb
4/27/2012	Irrigation ditch at Glen Annie Road. Leads to creek.	Donald Cram	Vectobac G	3 lb
5/1/2012	Andree Clark Bird Refuge	Kenny Learned	Vectobac G	78.5 lb
5/8/2012	Carpinteria Salt Marsh -coastal marshland	Royce Sharp	Vectobac G	7 lb
5/15/2012	Covington x Camino Laguna Vista-storm drains	Karen Schultz	Natular XRT	.32 lb
5/15/2012	Covington x Camino Venturoso. Inlet of Lake Los Carneros	Karen Schultz	Vectobac G	6 lb
5/16/2012	Atascadero Creek near Gwynne Ave to San Miguel	Vesna Ibarra	Vectobac G	7 lb
5/16/2012	Honda Preserve Creek/drain. 1205 Mira Canon Lane	Vesna Ibarra	Vectobac G	.3 lb
5/16/2012	La Mesa Park creek, 200 block of Meigs Rd.	Vesna Ibarra	Vectobac G	3 lb
5/22/2012	Willow Springs freshwater marsh. 6464 Hollister Ave.	Karen Schultz	Vectobac G	12 lb
5/30/2012	Las Vegas Creek at Franklin Ranch Rd.	Vesna Ibarra	Vectobac G	10 lb
5/31/2012	Creek at Evergreen Park	Karen Schultz	Vectobac G	8 lb
6/4/2012	Carpinteria Salt Marsh -coastal marshland	Royce Sharp	Vectobac G	8 lb
6/6/2012	Andree Clark Bird Refuge	Kenny Learned	Vectolex CG	112 lb
6/14/2012	Tecolote Creek	Royce Sharp	Vectobac G	15 lb
6/14/2012	Plunge pool in creek W of 7569 Newport Dr.	Karen Schultz	Altosid pellets	.1 lb
6/21/2012	Carpinteria Salt Marsh -coastal marshland	Royce Sharp	Vectobac G	8 lb
6/27/2012	Drain/culvert at Storke Ranch-S of 388 Storke Rd.	Karen Schultz	Vectolex CG	.1 lb
7/3/2012	Carpinteria Salt Marsh -coastal marshland	Royce Sharp	Vectobac G	19 lb
7/6/2012	Las Vegas Creek at Franklin Ranch Rd.	Vesna Ibarra	Vectobac G	10 lb
7/6/2012	1006 Via Los Padres-freshwater ditch in field.	Vesna Ibarra	Vectobac G	.3 lb
7/6/2012	Adjacent to 5823 Berkeley. Flood control ditch.	Vesna Ibarra	Vectobac G	2 lb
7/11/2012	ditch/remnant marsh. RR tracks at Cesar Chavez Blvd.	Royce Sharp	Vectobac G	5 lb
7/12/2012	Santa Barbara City-Honda Preserve. Culver to creek	Royce Sharp	Vectobac G	.04 lb
7/12/2012	Mesa Park Creek	Royce Sharp	Vectobac G	.4 lb
7/12/2012	Creek at Loma Alta-freshwater creek	Royce Sharp	Vectobac G	5 lb
7/13/2012	El Colegio/Los Carneros. Bioswales. San Clemente wetland.	Jessica Sprigg/Karen Schultz	Vectobac G	2 lb
7/13/2012	Drain at 1-99 Stadium Rd. Harder Stadium-UCSB.	Jessica Sprigg/Karen Schultz	Vectobac G	.05 lb
7/13/2012	Drainage Ditch at parking lot 29.6500-6506. El Colegio road.	Jessica Sprigg/Karen Schultz	Vectobac G	.05 lb

Agency:

Mosquito and Vector Management District of Santa Barbara County

Application Info

Date of Application	Applicator	Location	Name of Water Body	Type of Water Body	Description
1 02/08/2012	Vesna Ibarra	1400 Cabrillo Blvd.	Andree Clark Bird Refuge	Pond	34 acres, brackish water
2 02/08/2012	Vesna Ibarra	1400 Cabrillo Blvd.	Andree Clark Bird Refuge	Pond	34 acres, brackish water
3 02/08/2012	Vesna Ibarra	1400 Cabrillo Blvd.	Andree Clark Bird Refuge	Pond	34 acres, brackish water
4 03/02/2012	Karen Schultz	Riven Rock Estates (near Clover Lane x Rockbridge Ro:	Hot Springs Creek	Open waterway	~400 m section of pooled water in creekbed
5 03/02/2012	Karen Schultz	Riven Rock Estates (near Clover Lane x Rockbridge Ro:	Hot Springs Creek	Open waterway	~400 m section of pooled water in creekbed
6 03/02/2012	Karen Schultz	Riven Rock Estates (near Clover Lane x Rockbridge Ro:	Hot Springs Creek	Open waterway	~400 m section of pooled water in creekbed
7 03/14/2012	Kenny Learned	1400 Cabrillo Boulevard	Andree Clark Bird Refuge	Pond	34 acre brackish water
8 03/14/2012	Kenny Learned	1400 Cabrillo Boulevard	Andree Clark Bird Refuge	Pond	34 acre brackish water
9 03/14/2012	Kenny Learned	1400 Cabrillo Boulevard	Andree Clark Bird Refuge	Pond	34 acre brackish water
10 03/29/2012	Karen Schultz	4410 Cathedral Oaks	Drain at County Education building	Channel	5' L x2' W x1' D
11 03/29/2012	Karen Schultz	4410 Cathedral Oaks	Drain at County Education building	Channel	5' L x2' W x1' D
12 03/29/2012	Karen Schultz	4410 Cathedral Oaks	Drain at County Education building	Channel	5' L x2' W x1' D
13 04/20/2012	Karen Schultz	6400 Block of Hollister	Freshwater Marsh at Santa Barbara Airport	Open waterway	6 acres
14 04/20/2012	Karen Schultz	6400 Block of Hollister	Freshwater Marsh at Santa Barbara Airport	Open waterway	6 acres
15 04/20/2012	Karen Schultz	6400 Block of Hollister	Freshwater Marsh at Santa Barbara Airport	Open waterway	6 acres
16 04/27/2012	Donald Cram	Glen Annie Road	Glen Annie Irrigation Ditch	Channel	1000 sq. ft.
17 04/27/2012	Donald Cram	Glen Annie Road	Glen Annie Irrigation Ditch	Channel	1000 sq. ft.
18 04/27/2012	Donald Cram	Glen Annie Road	Glen Annie Irrigation Ditch	Channel	1000 sq. ft.
19 05/01/2012	Kenny Learned	1400 Cabrillo Boulevard	Andree Clark Bird Refuge	Pond	34 acres of brackish water
20 05/01/2012	Kenny Learned	1400 Cabrillo Boulevard	Andree Clark Bird Refuge	Pond	34 acres of brackish water
21 05/01/2012	Kenny Learned	1400 Cabrillo Boulevard	Andree Clark Bird Refuge	Pond	34 acres of brackish water
22 05/08/2012	Royce Sharp	NorthWest section of salt marsh off Carpinteria Ave.	Carpinteria Salt Marsh--bulldozer tracks	Channel	one acre of bulldozer tracks
23 05/08/2012	Royce Sharp	NorthWest section of salt marsh off Carpinteria Ave.	Carpinteria Salt Marsh--bulldozer tracks	Channel	one acre of bulldozer tracks
24 05/08/2012	Royce Sharp	NorthWest section of salt marsh off Carpinteria Ave.	Carpinteria Salt Marsh--bulldozer tracks	Channel	one acre of bulldozer tracks
25 05/15/2012	Karen Schultz	Covington Wayx Camino Laguna Vista Goleta CA	Storm Drains	Channel	
26 05/15/2012	Karen Schultz	Covington Wayx Camino Laguna Vista Goleta CA	Storm Drains	Channel	
27 05/15/2012	Karen Schultz	Covington Wayx Camino Laguna Vista Goleta CA	Storm Drains	Channel	
28 05/15/2012	Karen Schultz	Covington Wayx Camino Venturoso Goleta CA	Inlet of Lake Los Carneros	Pond	.6 acre treated
29 05/15/2012	Karen Schultz	Covington Wayx Camino Venturoso Goleta CA	Inlet of Lake Los Carneros	Pond	.6 acre treated
30 05/15/2012	Karen Schultz	Covington Wayx Camino Venturoso Goleta CA	Inlet of Lake Los Carneros	Pond	.6 acre treated
31 05/16/2012	Vesna Ibarra	Gwyne Ave. to Via Miguel	Atascadero Creek	Open waterway	~.5 acre
32 05/16/2012	Vesna Ibarra	Gwyne Ave. to Via Miguel	Atascadero Creek	Open waterway	~.5 acre
33 05/16/2012	Vesna Ibarra	Gwyne Ave. to Via Miguel	Atascadero Creek	Open waterway	~.5 acre
34 05/16/2012	Vesna Ibarra	near 1205 Mira Canon Lane	Honda Preserve Creek	Open waterway	180 sq. ft.
35 05/16/2012	Vesna Ibarra	near 1205 Mira Canon Lane	Honda Preserve Creek	Open waterway	180 sq. ft.
36 05/16/2012	Vesna Ibarra	near 1205 Mira Canon Lane	Honda Preserve Creek	Open waterway	180 sq. ft.
37 05/16/2012	Vesna Ibarra	200 block of Meigs Road at La Mesa Park	Mesa Creek	Open waterway	~5280 sq ft.
38 05/16/2012	Vesna Ibarra	200 block of Meigs Road at La Mesa Park	Mesa Creek	Open waterway	~5280 sq ft.
39 05/16/2012	Vesna Ibarra	200 block of Meigs Road at La Mesa Park	Mesa Creek	Open waterway	~5280 sq ft.
40 05/22/2012	Karen Schultz	6464 Hollister Ave. Goleta CA	Willow Springs Freshwater Marsh	Pond	1.5 acres
41 05/22/2012	Karen Schultz	6464 Hollister Ave. Goleta CA	Willow Springs Freshwater Marsh	Pond	1.5 acres
42 05/22/2012	Karen Schultz	6464 Hollister Ave. Goleta CA	Willow Springs Freshwater Marsh	Pond	1.5 acres
43 05/30/2012	Vesna Ibarra	Franklin Ranch Rd. Goleta CA	Las Vegas Creek	Open waterway	.5 acre
44 05/30/2012	Vesna Ibarra	Franklin Ranch Rd. Goleta CA	Las Vegas Creek	Open waterway	.5 acre
45 05/30/2012	Vesna Ibarra	Franklin Ranch Rd. Goleta CA	Las Vegas Creek	Open waterway	.5 acre
46 05/31/2012	Karen Schultz	Evergreen Park, Goleta	Evergreen Creek	Channel	1 acre
47 05/31/2012	Karen Schultz	Evergreen Park, Goleta	Evergreen Creek	Channel	1 acre
48 05/31/2012	Karen Schultz	Evergreen Park, Goleta	Evergreen Creek	Channel	1 acre

49	06/04/2012	Royce Sharp	Carpinteria Salt Marsh on Carpinteria Avenue	Bulldozer tracks in Northwest section of Salt Ma	Channel	Impounded water due to bulldozer tracks.
50	06/04/2012	Royce Sharp	Carpinteria Salt Marsh on Carpinteria Avenue	Bulldozer tracks in Northwest section of Salt Ma	Channel	Impounded water due to bulldozer tracks.
51	06/04/2012	Royce Sharp	Carpinteria Salt Marsh on Carpinteria Avenue	Bulldozer tracks in Northwest section of Salt Ma	Channel	Impounded water due to bulldozer tracks.
52	06/06/2012	Kenny Learned	1400 Cabrillo Boulevard	Andree Clark Bird Refuge	Pond	34 acres of brackish water
53	06/06/2012	Kenny Learned	1400 Cabrillo Boulevard	Andree Clark Bird Refuge	Pond	34 acres of brackish water
54	06/06/2012	Kenny Learned	1400 Cabrillo Boulevard	Andree Clark Bird Refuge	Pond	34 acres of brackish water
55	06/14/2012	Royce Sharp	Goleta, CA (Rancho Embarcadero)	Tecolote Creek	Open waterway	
56	06/14/2012	Royce Sharp	Goleta, CA (Rancho Embarcadero)	Tecolote Creek	Open waterway	
57	06/14/2012	Royce Sharp	Goleta, CA (Rancho Embarcadero)	Tecolote Creek	Open waterway	
58	06/14/2012	Karen Schultz	Santa Barbara Shores Dr., Coronado Dr.	tributary of Devereux Creek	Open waterway	
59	06/14/2012	Karen Schultz	Santa Barbara Shores Dr., Coronado Dr.	tributary of Devereux Creek	Open waterway	
60	06/14/2012	Karen Schultz	Santa Barbara Shores Dr., Coronado Dr.	tributary of Devereux Creek	Open waterway	
61	06/21/2012	Royce Sharp	North end of Carpinteria Ave. Carpinteria Salt Marsh	Bulldozer track at NW end of Salt Marsh	Channel	
62	06/21/2012	Royce Sharp	North end of Carpinteria Ave. Carpinteria Salt Marsh	Bulldozer track at NW end of Salt Marsh	Channel	
63	06/21/2012	Royce Sharp	North end of Carpinteria Ave. Carpinteria Salt Marsh	Bulldozer track at NW end of Salt Marsh	Channel	
64	06/27/2012	Karen Schultz	S of 388 Storke Rd. Goleta CA	Drain/culvert	Channel	corner of seasonal marsh, freshwater runoff
65	06/27/2012	Karen Schultz	S of 388 Storke Rd. Goleta CA	Drain/culvert	Channel	corner of seasonal marsh, freshwater runoff
66	06/27/2012	Karen Schultz	S of 388 Storke Rd. Goleta CA	Drain/culvert	Channel	corner of seasonal marsh, freshwater runoff
67	07/03/2012	Royce Sharp	North end of Carpinteria Avenue, Carpinteria Salt Marsh	Bulldozer tracks at NW end of Salt Marsh	Channel	
68	07/03/2012	Royce Sharp	North end of Carpinteria Avenue, Carpinteria Salt Marsh	Bulldozer tracks at NW end of Salt Marsh	Channel	
69	07/03/2012	Royce Sharp	North end of Carpinteria Avenue, Carpinteria Salt Marsh	Bulldozer tracks at NW end of Salt Marsh	Channel	
70	07/06/2012	Vesna Ibarra	Franklin Ranch Rd at La Goleta Rd.	Las Vegas Creek	Open waterway	
71	07/06/2012	Vesna Ibarra	Franklin Ranch Rd at La Goleta Rd.	Las Vegas Creek	Open waterway	
72	07/06/2012	Vesna Ibarra	Franklin Ranch Rd at La Goleta Rd.	Las Vegas Creek	Open waterway	
73	07/06/2012	Vesna Ibarra	1006 Via Los Padres, Goleta CA	lawn drains/ditch	Channel	
74	07/06/2012	Vesna Ibarra	1006 Via Los Padres, Goleta CA	lawn drains/ditch	Channel	
75	07/06/2012	Vesna Ibarra	1006 Via Los Padres, Goleta CA	lawn drains/ditch	Channel	
76	07/06/2012	Vesna Ibarra	Berkeley Rd, Goleta CA	Flood Control Channel	Channel	
77	07/06/2012	Vesna Ibarra	Berkeley Rd, Goleta CA	Flood Control Channel	Channel	
78	07/06/2012	Vesna Ibarra	Berkeley Rd, Goleta CA	Flood Control Channel	Channel	
79	07/11/2012	Royce Sharp	NW corner of Cabrillo Blvd. and Cesar Chavez St.	ditch/remnant marsh at RR tracks	Channel	
80	07/11/2012	Royce Sharp	NW corner of Cabrillo Blvd. and Cesar Chavez St.	ditch/remnant marsh at RR tracks	Channel	
81	07/11/2012	Royce Sharp	NW corner of Cabrillo Blvd. and Cesar Chavez St.	ditch/remnant marsh at RR tracks	Channel	
82	7/12/12	Royce Sharp	NW corner of Cabrillo Blvd. and Cesar Chavez St.	ditch/remnant marsh at RR tracks	Channel	
83	7/12/12	Royce Sharp	NW corner of Cabrillo Blvd. and Cesar Chavez St.	ditch/remnant marsh at RR tracks	Channel	
84	7/12/12	Royce Sharp	NW corner of Cabrillo Blvd. and Cesar Chavez St.	ditch/remnant marsh at RR tracks	Channel	
85	07/12/2012	Royce Sharp	Mesa Park in Santa Barbara	Mesa Park Creek	Open waterway	
86	07/12/2012	Royce Sharp	Mesa Park in Santa Barbara	Mesa Park Creek	Open waterway	
87	07/12/2012	Royce Sharp	Mesa Park in Santa Barbara	Mesa Park Creek	Open waterway	
88	07/12/2012	Royce Sharp	Loma Alta Dr. near Santa Barbara City College	Creek west of Santa Barbara City College	Open waterway	
89	07/12/2012	Royce Sharp	Loma Alta Dr. near Santa Barbara City College	Creek west of Santa Barbara City College	Open waterway	
90	07/12/2012	Royce Sharp	Loma Alta Dr. near Santa Barbara City College	Creek west of Santa Barbara City College	Open waterway	
91	07/13/2012	Jessica Sprigg	El Colegio Rd. and Los Carneros Rd., Isla Vista	San Clemente wetland, bioswales at student ho	Channel	freshwater wetland w/ tules, stormwater mngmnt system
92	07/13/2012	Jessica Sprigg	El Colegio Rd. and Los Carneros Rd., Isla Vista	San Clemente wetland, bioswales at student ho	Channel	freshwater wetland w/ tules, stormwater mngmnt system
93	07/13/2012	Jessica Sprigg	El Colegio Rd. and Los Carneros Rd., Isla Vista	San Clemente wetland, bioswales at student ho	Channel	freshwater wetland w/ tules, stormwater mngmnt system
94	07/13/2012	Jessica Sprigg	UCSB Harder Stadium, Stadium Rd.	Storm Drain on South side of Stadium Road.	Channel	4'x5' storm
95	07/13/2012	Jessica Sprigg	UCSB Harder Stadium, Stadium Rd.	Storm Drain on South side of Stadium Road.	Channel	4'x5' storm
96	07/13/2012	Jessica Sprigg	UCSB Harder Stadium, Stadium Rd.	Storm Drain on South side of Stadium Road.	Channel	4'x5' storm
97	07/13/2012	Jessica Sprigg	UCSB, Parking Lot 29. 6500-6506 El Colegio Rd. Isla Vi	NE end of Drainage ditch	Channel	2'x1' area of drainage ditch
98	07/13/2012	Jessica Sprigg	UCSB, Parking Lot 29. 6500-6506 El Colegio Rd. Isla Vi	NE end of Drainage ditch	Channel	2'x1' area of drainage ditch
99	07/13/2012	Jessica Sprigg	UCSB, Parking Lot 29. 6500-6506 El Colegio Rd. Isla Vi	NE end of Drainage ditch	Channel	2'x1' area of drainage ditch

MONITORING Information						
	Type of pesticide	Product Name	Time of monitoring	Monitoring Date	Time	Name(s) of personnel
1	Larvicide	Vectobac G	Background	02/06/2012	1:30 PM	Kenny Learned
2	Larvicide	Vectobac G	Event	02/08/2012	10:15 AM	Kenny Learned
3	Larvicide	Vectobac G	Post-Event	02/10/2012	11:00 AM	Kenny Learned
4	Larvicide	Vectobac G	Background	03/01/2012	10:00 AM	Karen Schultz
5	Larvicide	Vectobac G	Event	03/02/2012	9:50 AM	Karen Schultz
6	Larvicide	Vectobac G	Post-Event	03/06/2012	2:00 PM	Karen Schultz
7	Larvicide	Vectobac G	Background	03/13/2012	9:00 AM	Kenny Learned
8	Larvicide	Vectobac G	Event	03/14/2012	9:00 AM	Kenny Learned
9	Larvicide	Vectobac G	Post-Event	03/16/2012	10:00 AM	Kenny Learned
10	Larvicide	Natular XRT	Background	03/28/2012	2:30 PM	Karen Schultz
11	Larvicide	Natular XRT	Event	03/29/2012	1:30 PM	Karen Schultz
12	Larvicide	Natular XRT	Post-Event	03/30/2012	1:30 PM	Karen Schultz
13	Larvicide	Vectobac G	Background	04/19/2012	2:30 PM	Karen Schultz
14	Larvicide	Vectobac G	Event	04/20/2012	9:45 AM	Karen Schultz
15	Larvicide	Vectobac G	Post-Event	04/24/2012	1:30 PM	Karen Schultz
16	Larvicide	Vectobac G	Background	04/26/2012	12:45 PM	Donald Cram
17	Larvicide	Vectobac G	Event	04/27/2012	1:15 PM	Donald Cram
18	Larvicide	Vectobac G	Post-Event	04/30/2012	9:00 AM	Donald Cram
19	Larvicide	Vectobac G	Background	04/30/12	9:30 AM	Kenny Learned
20	Larvicide	Vectobac G	Event	05/01/2012	9:30 AM	Kenny Learned
21	Larvicide	Vectobac G	Post-Event	05/04/2012	9:30 AM	Kenny Learned
22	Larvicide	Vectobac G	Background	05/07/2012	9:00 AM	Royce Sharp
23	Larvicide	Vectobac G	Event	05/08/2012	9:00 AM	Royce Sharp
24	Larvicide	Vectobac G	Post-Event	05/09/2012	9:30 AM	Royce Sharp
25	Larvicide	Natular XRT	Background	05/14/2012	1:00 PM	Karen Schultz
26	Larvicide	Natular XRT	Event	05/15/2012	1:30 PM	Karen Schultz
27	Larvicide	Natular XRT	Post-Event	05/17/2012	1:30 PM	Karen Schultz
28	Larvicide	Vectobac G	Background	05/14/2012	1:30 PM	Karen Schultz
29	Larvicide	Vectobac G	Event	05/15/2012	2:00 PM	Karen Schultz
30	Larvicide	Vectobac G	Post-Event	05/17/2012	1:00 PM	Karen Schultz
31	Larvicide	Vectobac G	Background	05/15/2012	2:00 PM	Vesna Ibarra
32	Larvicide	Vectobac G	Event	05/16/2012	12:15 PM	Vesna Ibarra
33	Larvicide	Vectobac G	Post-Event	05/17/2012	9:30 AM	Vesna Ibarra
34	Larvicide	Vectobac G	Background	05/15/2012	10:00 AM	Vesna Ibarra
35	Larvicide	Vectobac G	Event	05/16/2012	10:15 AM	Vesna Ibarra
36	Larvicide	Vectobac G	Post-Event	05/17/2012	12:00 PM	Vesna Ibarra
37	Larvicide	Vectobac G	Background	05/15/2012	12:00 PM	Vesna Ibarra
38	Larvicide	Vectobac G	Event	05/16/2012	11:00 AM	Vesna Ibarra
39	Larvicide	Vectobac G	Post-Event	05/17/2012	11:30 AM	Vesna Ibarra
40	Larvicide	Vectobac G	Background	05/21/2012	11:00 AM	Karen Schultz
41	Larvicide	Vectobac G	Event	05/22/2012	11:00 AM	Karen Schultz
42	Larvicide	Vectobac G	Post-Event	05/23/2012	11:00 AM	Karen Schultz
43	Larvicide	Vectobac G	Background	05/29/2012	2:00 PM	Vesna Ibarra
44	Larvicide	Vectobac G	Event	05/30/2012	10:30 AM	Vesna Ibarra
45	Larvicide	Vectobac G	Post-Event	05/31/2012	12:00 PM	Vesna Ibarra
46	Larvicide	Vectobac G	Background	05/30/2012	1:00 PM	Karen Schultz
47	Larvicide	Vectobac G	Event	05/31/2012	10:00 AM	Karen Schultz
48	Larvicide	Vectobac G	Post-Event	06/01/2012	1:00 PM	Karen Schultz

49	Larvicide	Vectobac G	Background	06/01/2012	2:00 PM	Royce Sharp
50	Larvicide	Vectobac G	Event	06/04/2012	9:00 AM	Royce Sharp
51	Larvicide	Vectobac G	Post-Event	06/05/2012	2:15 PM	Royce Sharp
52	Larvicide	Vectolex CG	Background	06/04/2012	9:00 AM	Kenny Learned
53	Larvicide	Vectolex CG	Event	06/06/2012	10:00 AM	Kenny Learned
54	Larvicide	Vectolex CG	Post-Event	06/11/2012	12:30 PM	Kenny Learned
55	Larvicide	Vectobac G	Background	06/13/2012	2:00 PM	Royce Sharp
56	Larvicide	Vectobac G	Event	06/14/2012	1:00 PM	Royce Sharp
57	Larvicide	Vectobac G	Post-Event	06/15/2012	9:45 AM	Royce Sharp
58	Larvicide	Altosid pellets	Background	06/13/2012	10:45 AM	Karen Schultz
59	Larvicide	Altosid pellets	Event	06/14/2012	10:15 AM	Karen Schultz
60	Larvicide	Altosid pellets	Post-Event	06/15/2012	10:00 AM	Karen Schultz
61	Larvicide	Vectobac G	Background	06/20/2012	2:45 PM	Royce Sharp
62	Larvicide	Vectobac G	Event	06/21/2012	10:15 AM	Royce Sharp
63	Larvicide	Vectobac G	Post-Event	06/22/2012	9:30 AM	Royce Sharp
64	Larvicide	Vectolex CG	Background	06/26/2012	2:00 PM	Karen Schultz
65	Larvicide	Vectolex CG	Event	06/27/2012	1:20 PM	Karen Schultz
66	Larvicide	Vectolex CG	Post-Event	06/28/2012	1:30 PM	Karen Schultz
67	Larvicide	Vectobac G	Background	07/02/2012	9:45 AM	Royce Sharp
68	Larvicide	Vectobac G	Event	07/03/2012	8:45 AM	Royce Sharp
69	Larvicide	Vectobac G	Post-Event	07/05/2012	12:15 PM	Royce Sharp
70	Larvicide	Vectobac G	Background	07/05/2012	1:00 PM	Vesna Ibarra
71	Larvicide	Vectobac G	Event	07/06/2012	2:40 PM	Vesna Ibarra
72	Larvicide	Vectobac G	Post-Event	07/09/2012	11:30 AM	Vesna Ibarra
73	Larvicide	Vectobac G	Background	07/05/2012	3:00 PM	Vesna Ibarra
74	Larvicide	Vectobac G	Event	07/06/2012	9:45 AM	Vesna Ibarra
75	Larvicide	Vectobac G	Post-Event	07/09/2012	10:20 AM	Vesna Ibarra
76	Larvicide	Vectobac G	Background	07/05/2012	10:50 AM	Vesna Ibarra
77	Larvicide	Vectobac G	Event	07/06/2012	1:00 PM	Vesna Ibarra
78	Larvicide	Vectobac G	Post-Event	07/09/2012	11:00 AM	Vesna Ibarra
79	Larvicide	Vectobac G	Background	07/10/2012	3:00 PM	Royce Sharp
80	Larvicide	Vectobac G	Event	07/11/2012	2:00 PM	Royce Sharp
81	Larvicide	Vectobac G	Post-Event	07/12/2012	3:00 PM	Royce Sharp
82	Larvicide	Vectobac G	Background	07/11/12	11:45 AM	Royce Sharp
83	Larvicide	Vectobac G	Event	07/12/2012	1:00 PM	Royce Sharp
84	Larvicide	Vectobac G	Post-Event	07/13/2012	2:00 PM	Royce Sharp
85	Larvicide	Vectobac G	Background	07/11/2012	10:00 AM	Royce Sharp
86	Larvicide	Vectobac G	Event	07/12/2012	11:00 AM	Royce Sharp
87	Larvicide	Vectobac G	Post-Event	07/13/2012	1:15 PM	Royce Sharp
88	Larvicide	Vectobac G	Background	07/11/12	9:30 AM	Royce Sharp
89	Larvicide	Vectobac G	Event	07/12/12	1:30 PM	Royce Sharp
90	Larvicide	Vectobac G	Post-Event	07/13/12	9:30 AM	Royce Sharp
91	Larvicide	Vectobac G	Background	07/12/12	2:00 PM	Karen Schultz
92	Larvicide	Vectobac G	Event	07/13/12	2:45 PM	Karen Schultz
93	Larvicide	Vectobac G	Post-Event	07/16/12	1:15 PM	Karen Schultz
94	Larvicide	Vectobac G	Background	07/12/12	10:30 AM	Karen Schultz
95	Larvicide	Vectobac G	Event	07/13/12	1:50 PM	Karen Schultz
96	Larvicide	Vectobac G	Post-Event	07/16/12	1:45 PM	Karen Schultz
97	Larvicide	Vectobac G	Background	07/12/12	2:30 PM	Karen Schultz
98	Larvicide	Vectobac G	Event	07/13/12	1:20 PM	Karen Schultz
99	Larvicide	Vectobac G	Post-Event	07/16/12	2:15 PM	Karen Schultz

Weather Conditions				Visual Observation								
Overhead Conditions	Precipitation	Wind	Air Temperature	Water Color	Water Clarity	Floating/Suspended Matter	Bottom Deposits	Aquatic Life	Water Surface Oils	Fungi, Slimes or objectionable growths	Potential Nuisance Conditions	
1	Overcast	None	Calm	Cool	Green	Murky	Observed	Observed	Observed	None.	Observed	None
2	Clear/sunny	None	Light breeze	Cool	Yellow	Murky	Observed	Observed	Observed	None.	Observed	None
3	Clear/sunny	None	Calm	Cool	Yellow	Murky	Observed	Observed	Observed	None.	Observed	None
4	Clear/sunny	None	Light breeze	Cool	Colorless	Clear	Not Observed	Observed	Observed	None.	Not Observed	None
5	Clear/sunny	None	Calm	Cool	Colorless	Clear	Not Observed	Observed	Observed	None	Not Observed	None
6	Clear/sunny	None	Gusty	Cool	Colorless	Clear	Not Observed	Observed	Observed	None.	Not Observed	None
7	Overcast	None	Light breeze	Cool	Brown	Murky	Observed	Observed	Observed	Flecks	Not Observed	None
8	Clear/sunny	None	Light breeze	Cool	Brown	Murky	Observed	Observed	Observed	None.	Not Observed	None
9	Overcast	None	Light breeze	Cool	Brown	Murky	Observed	Observed	Observed	Flecks	Not Observed	None
10	Partly cloudy	None	Light breeze	Cool	Brown	Murky	Observed	Observed	Observed	None.	Not Observed	None
11	Partly cloudy	None	Light breeze	Cool	Brown	Murky	Observed	Observed	Not Obsen	None.	Not Observed	None
12	Partly cloudy	None	Light breeze	Cool	Brown	Murky	Observed	Observed	Not Obsen	None.	Not Observed	None
13	Partly cloudy	None	Light breeze	Cool	Yellow	Clear	Observed	Observed	Observed	None.	Not Observed	None
14	Hazy	None	Light breeze	Cool	Yellow	Clear	Observed	Observed	Observed	None.	Not Observed	None
15	Clear/sunny	None	Light breeze	Cool	Yellow	Clear	Observed	Observed	Observed	None.	Not Observed	None
16	Overcast	None	Light breeze	Cool	Colorless	Clear	Not Observed	Observed	Observed	None.	Not Observed	None
17	Clear/sunny	None	Light breeze	Warm/mild	Colorless	Clear	Not Observed	Observed	Observed	None.	Not Observed	None
18	Overcast	None	Light breeze	Cool	Colorless	Clear	Observed	Observed	Observed	None.	Not Observed	None
19	Overcast	None	Light breeze	Cool	Green	Murky	Observed	Not Obsen	Observed	None.	Not Observed	None
20	Overcast	None	Light breeze	Cool	Green	Murky	Observed	Not Obsen	Observed	None.	Not Observed	None
21	Clear/sunny	None	Light breeze	Warm/mild	Green	Murky	Observed	Not Obsen	Observed	None.	Not Observed	None
22	Partly cloudy	None	Calm	Warm/mild	Yellow	Clear	Observed	Observed	Observed	Sheen	Not Observed	Non-native ice plant, trash.
23	Partly cloudy	None	Calm	Warm/mild	Yellow	Clear	Observed	Observed	Observed	Sheen	Not Observed	Non-native ice plant, trash.
24	Clear/sunny	None	Calm	Warm/mild	Yellow	Clear	Observed	Observed	Observed	Sheen	Not Observed	non-native ice plant, trash
25	Clear/sunny	None	Calm	Warm/mild	Yellow	Cloudy	Observed	Observed	Observed	None.	Not Observed	Plastic garbage.
26	Clear/sunny	None	Calm	Warm/mild	Yellow	Cloudy	Observed	Observed	Observed	None.	Not Observed	Plastic garbage.
27	Clear/sunny	None	Calm	Warm/mild	Yellow	Clear	Observed	Observed	Not Obsen	Sheen	Not Observed	Plastic garbage.
28	Clear/sunny	None	Light breeze	Warm/mild	Yellow	Cloudy	Not Observed	Observed	Observed	None.	Not Observed	None
29	Clear/sunny	None	Calm	Warm/mild	Yellow	Cloudy	Observed	Observed	Observed	None.	Not Observed	None
30	Clear/sunny	None	Calm	Warm/mild	Yellow	Clear	Not Observed	Observed	Observed	None.	Not Observed	None
31	Clear/sunny	None	Light breeze	Cool	Green	Cloudy	Not Observed	Observed	Observed	None.	Not Observed	None
32	Clear/sunny	None	Light breeze	Cool	Green	Clear	Observed	Observed	Observed	None.	Not Observed	None
33	Clear/sunny	None	Light breeze	Cool	Green	Clear	Not Observed	Observed	Observed	None.	Not Observed	None
34	Clear/sunny	None	Light breeze	Cool	Brown	Murky	Observed	Observed	Observed	None.	Not Observed	None
35	Clear/sunny	None	Light breeze	Cool	Brown	Murky	Observed	Observed	Observed	None.	Not Observed	None
36	Clear/sunny	None	Light breeze	Cool	Brown	Murky	Observed	Observed	Not Obsen	None.	Not Observed	None
37	Clear/sunny	None	Light breeze	Cool	Brown	Clear	Observed	Observed	Observed	None.	Not Observed	None
38	Clear/sunny	None	Light breeze	Cool	Brown	Clear	Observed	Observed	Observed	None.	Not Observed	None
39	Clear/sunny	None	Light breeze	Cool	Brown	Clear	Observed	Observed	Not Obsen	None.	Not Observed	None
40	Clear/sunny	None	Light breeze	Warm/mild	Colorless	Clear	Not Observed	Observed	Observed	None.	Not Observed	None
41	Clear/sunny	None	Calm	Warm/mild	Colorless	Clear	Observed	Observed	Observed	None.	Not Observed	None
42	Clear/sunny	None	Light breeze	Warm/mild	Colorless	Clear	Not Observed	Observed	Observed	None.	Not Observed	None
43	Clear/sunny	None	Light breeze	Cool	Colorless	Clear	Observed	Observed	Observed	None.	Not Observed	None
44	Clear/sunny	None	Calm	Cool	Colorless	Clear	Observed	Observed	Observed	None.	Not Observed	None
45	Clear/sunny	None	Light breeze	Warm/mild	Colorless	Clear	Observed	Observed	Observed	None.	Not Observed	None
46	Clear/sunny	None	Calm	Warm/mild	Brown	Cloudy	Not Observed	Observed	Observed	None.	Not Observed	Sewer odor.
47	Clear/sunny	None	Calm	Warm/mild	Brown	Cloudy	Observed	Observed	Observed	None.	Not Observed	Sewer odor.
48	Clear/sunny	None	Calm	Warm/mild	Brown	Cloudy	Not Observed	Observed	Observed	None.	Not Observed	Sewer odor.

49	Clear/sunny	None	Calm	Warm/mild	Colorless	Clear	Observed	Observed	Observed	Small patches.	Not Observed	Non-native iceplant and trash
50	Overcast	None	Calm	Warm/mild	Colorless	Clear	Observed	Observed	Observed	Small patches.	Not Observed	Non-native iceplant and trash
51	Partly cloudy	None	Calm	Warm/mild	Colorless	Clear	Observed	Observed	Observed	Small patches.	Not Observed	Non-native iceplant and trash
52	Overcast	None	Calm	Warm/mild	Green	Murky	Observed	Observed	Observed	None.	Not Observed	None
53	Clear/sunny	None	Calm	Warm/mild	Green	Murky	Observed	Observed	Observed	None.	Not Observed	None
54	Overcast	None	Calm	Warm/mild	Green	Murky	Observed	Observed	Observed	None.	Not Observed	None
55	Overcast	None	Calm	Warm/mild	Colorless	Clear	Not Observed	Observed	Observed	None.	Not Observed	None
56	Overcast	None	Calm	Warm/mild	Colorless	Clear	Observed	Observed	Observed	None.	Not Observed	None
57	Overcast	Drizzle	Calm	Cool	Colorless	Clear	Not Observed	Observed	Observed	None.	Not Observed	None
58	Overcast	None	Light breeze	Cool	Brown	Cloudy	Observed	Observed	Observed	None.	Not Observed	None
59	Overcast	None	Calm	Cool	Brown	Cloudy	Observed	Observed	Observed	None.	Not Observed	None
60	Overcast	None	Calm	Cool	Brown	Cloudy	Observed	Observed	Observed	None.	Not Observed	None
61	Overcast	None	Calm	Warm/mild	Yellow	Cloudy	Observed	Observed	Observed	Flecks	Not Observed	non-native ice plant, trash.
62	Hazy	None	Calm	Warm/mild	Yellow	Cloudy	Observed	Observed	Observed	Flecks	Not Observed	non-native iceplant, trash.
63	Clear/sunny	None	Calm	Warm/mild	Yellow	Cloudy	Observed	Observed	Observed	Flecks	Not Observed	non-native iceplant, trash.
64	Clear/sunny	None	Light breeze	Warm/mild	orange (rust)	Clear	Observed	Observed	Observed	None.	Not Observed	None
65	Clear/sunny	None	Light breeze	Warm/mild	orange (rust)	Clear	Observed	Observed	Observed	None.	Not Observed	None
66	Clear/sunny	None	Light breeze	Warm/mild	orange (rust)	Clear	Observed	Observed	Not Obsen	None.	Not Observed	None
67	Clear/sunny	None	Calm	Warm/mild	Yellow	Cloudy	Observed	Observed	Observed	Flecks	Not Observed	Non-native iceplant, Trash.
68	Overcast	None	Calm	Cool	Yellow	Cloudy	Observed	Observed	Observed	Flecks	Not Observed	Trash.
69	Overcast	None	Calm	Warm/mild	Yellow	Cloudy	Observed	Observed	Observed	Flecks	Not Observed	non-native iceplant, trash.
70	Partly cloudy	None	Light breeze	Cool	Green	Clear	Not Observed	Observed	Observed	None.	Not Observed	None
71	Clear/sunny	None	Light breeze	Warm/mild	Green	Clear	Observed	Observed	Observed	None.	Not Observed	None
72	Clear/sunny	None	Light breeze	Cool	Green	Clear	Not Observed	Observed	Observed	None.	Not Observed	None
73	Partly cloudy	None	Light breeze	Cool	Gray.	Clear	Observed	Observed	Observed	None.	Not Observed	None
74	Partly cloudy	None	Calm	Cool	Gray.	Clear	Observed	Observed	Not Obsen	None.	Not Observed	None
75	Clear/sunny	None	Light breeze	Cool	Green	Clear	Observed	Observed	Not Obsen	None.	Not Observed	None
76	Partly cloudy	None	Calm	Cool	Green	Clear	Observed	Observed	Observed	None.	Not Observed	None
77	Partly cloudy	None	Light breeze	Cool	Green	Clear	Observed	Observed	Not Obsen	None.	Not Observed	None
78	Clear/sunny	None	Light breeze	Cool	Green	Clear	Observed	Observed	Not Obsen	None.	Not Observed	None
79	Partly cloudy	None	Calm	Warm/mild	Brown	Murky	Observed	Observed	Observed	Patches.	Not Observed	Various pollution and Trash.
80	Partly cloudy	None	Calm	Warm/mild	Brown	Murky	Observed	Observed	Observed	Patches.	Not Observed	Various pollution and trash.
81	Partly cloudy	None	Calm	Warm/mild	Brown	Murky	Observed	Observed	Not Obsen	Patches.	Not Observed	Various pollutants, trash.
82	Overcast	None	Calm	Warm/mild	Rust colored.	Cloudy	Observed	Observed	Observed	None.	Not Observed	non-native eucalyptus, Trash.
83	Partly cloudy	None	Calm	Warm/mild	rust-colored	Cloudy	Observed	Observed	Observed	None.	Not Observed	non native eucalyptus, trash.
84	Partly cloudy	None	Calm	Warm/mild	rust-colored	Cloudy	Observed	Observed	Not Obsen	None.	Not Observed	non-native eucalyptus, trash.
85	Partly cloudy	None	Calm	Warm/mild	Rust colored.	Clear	Observed	Observed	Observed	None.	Not Observed	non-native algerian ivy, Trash
86	Partly cloudy	None	Calm	Warm/mild	rust-colored	Clear	Observed	Observed	Observed	None.	Not Observed	non native algerian ivy, trash.
87	Partly cloudy	None	Calm	Warm/mild	rust-colored	Clear	Observed	Observed	Observed	None.	Not Observed	non-native algerian ivy, trash.
88	Partly cloudy	None	Calm	Warm/mild	Brown	Murky	Observed	Observed	Observed	None.	Not Observed	Trash.
89	Partly cloudy	None	Calm	Warm/mild	Brown	Murky	Observed	Observed	Observed	None.	Not Observed	Trash.
90	Partly cloudy	None	Calm	Cool	Brown	Murky	Observed	Observed	Observed	None.	Not Observed	Trash.
91	Partly cloudy	None	Calm	Cool	Orange	Clear	Observed	Observed	Observed	None.	Not Observed	None
92	Clear/sunny	None	Light breeze	Warm/mild	Orange.	Clear	Observed	Observed	Observed	None.	Not Observed	None
93	Partly cloudy	None	Light breeze	Cool	Orange.	Clear	Observed	Observed	Observed	None.	Not Observed	None
94	Partly cloudy	None	Calm	Cool	Yellow	Clear	Not Observed	Not Obsen	Observed	None.	Not Observed	None
95	Clear/sunny	None	Light breeze	Warm/mild	Yellow	Clear	Observed	Not Obsen	Observed	None.	Not Observed	None
96	Partly cloudy	None	Light breeze	Cool	Yellow	Clear	Not Observed	Not Obsen	Not Obsen	None.	Not Observed	None
97	Partly cloudy	None	Calm	Cool	Colorless	Clear	Observed	Observed	Observed	None.	Not Observed	None
98	Clear/sunny	None	Light breeze	Warm/mild	Colorless	Clear	Observed	Observed	Observed	None.	Not Observed	None
99	Partly cloudy	None	Light breeze	Cool	Colorless	Clear	Observed	Observed	Observed	None.	Not Observed	None

Field Measurements										
	Water Temperature	Model	Electrical conductivity (EC)	Model	Dissolved oxygen (DO)	Model	pH	Model	Turbidity	Model
1	Field Inst./		/		/		/		/	
2	Field Inst./		/		/		/		/	
3	Field Inst./		/		/		/		/	
4	Field Inst./		/		/		/		/	
5	Field Inst./		/		/		/		/	
6	Field Inst./		/		/		/		/	
7	Field Inst./		/		/		/		/	
8	Field Inst./		/		/		/		/	
9	Field Inst./		/		/		/		/	
10	Field Inst./		/		/		/		/	
11	Field Inst./		/		/		/		/	
12	Field Inst./		/		/		/		/	
13	Field Inst./		/		/		/		/	
14	Field Inst./		/		/		/		/	
15	Field Inst./		/		/		/		/	
16	Field Inst./		/		/		/		/	
17	Field Inst./		/		/		/		/	
18	Field Inst./		/		/		/		/	
19	Field Inst./		/		/		/		/	
20	Field Inst./		/		/		/		/	
21	Field Inst./		/		/		/		/	
22	Field Inst./		/		/		/		/	
23	Field Inst./		/		/		/		/	
24	Field Inst./		/		/		/		/	
25	Field Inst./		/		/		/		/	
26	Field Inst./		/		/		/		/	
27	Field Inst./		/		/		/		/	
28	Field Inst./		/		/		/		/	
29	Field Inst./		/		/		/		/	
30	Field Inst./		/		/		/		/	
31	Field Inst./		/		/		/		/	
32	Field Inst./		/		/		/		/	
33	Field Inst./		/		/		/		/	
34	Field Inst./		/		/		/		/	
35	Field Inst./		/		/		/		/	
36	Field Inst./		/		/		/		/	
37	Field Inst./		/		/		/		/	
38	Field Inst./		/		/		/		/	
39	Field Inst./		/		/		/		/	
40	Field Inst./		/		/		/		/	
41	Field Inst./		/		/		/		/	
42	Field Inst./		/		/		/		/	
43	Field Inst./		/		/		/		/	
44	Field Inst./		/		/		/		/	
45	Field Inst./		/		/		/		/	
46	Field Inst./		/		/		/		/	
47	Field Inst./		/		/		/		/	
48	Field Inst./		/		/		/		/	

49	Field Inst./	/	/	/	/
50	Field Inst./	/	/	/	/
51	Field Inst./	/	/	/	/
52	Field Inst./	/	/	/	/
53	Field Inst./	/	/	/	/
54	Field Inst./	/	/	/	/
55	Field Inst./	/	/	/	/
56	Field Inst./	/	/	/	/
57	Field Inst./	/	/	/	/
58	Field Inst./	/	/	/	/
59	Field Inst./	/	/	/	/
60	Field Inst./	/	/	/	/
61	Field Inst./	/	/	/	/
62	Field Inst./	/	/	/	/
63	Field Inst./	/	/	/	/
64	Field Inst./	/	/	/	/
65	Field Inst./	/	/	/	/
66	Field Inst./	/	/	/	/
67	Field Inst./	/	/	/	/
68	Field Inst./	/	/	/	/
69	Field Inst./	/	/	/	/
70	Field Inst./	/	/	/	/
71	Field Inst./	/	/	/	/
72	Field Inst./	/	/	/	/
73	Field Inst./	/	/	/	/
74	Field Inst./	/	/	/	/
75	Field Inst./	/	/	/	/
76	Field Inst./	/	/	/	/
77	Field Inst./	/	/	/	/
78	Field Inst./	/	/	/	/
79	Field Inst./	/	/	/	/
80	Field Inst./	/	/	/	/
81	Field Inst./	/	/	/	/
82	Field Inst./	/	/	/	/
83	Field Inst./	/	/	/	/
84	Field Inst./	/	/	/	/
85	Field Inst./	/	/	/	/
86	Field Inst./	/	/	/	/
87	Field Inst./	/	/	/	/
88	Field Inst./	/	/	/	/
89	Field Inst./	/	/	/	/
90	Field Inst./	/	/	/	/
91	Field Inst./	/	/	/	/
92	Field Inst./	/	/	/	/
93	Field Inst./	/	/	/	/
94	Field Inst./	/	/	/	/
95	Field Inst./	/	/	/	/
96	Field Inst./	/	/	/	/
97	Field Inst./	/	/	/	/
98	Field Inst./	/	/	/	/
99	Field Inst./	/	/	/	/

Monitoring Log Sheet

Agency:	ito and Vector Management District of Santa Barbara	Location	1400 Cabrillo Blvd.
Applicator Name:	Vesna Ibarra	Water Body:	Andree Clark Bird Refuge Pond
Date of Application:	02/08/2012	Description:	34 acres, brackish water
Pesticide	Larvicide Vectobac G		

Visual Observation

	Background Monitoring			Event Monitoring			Post-Event Monitoring		
Date of Monitoring	02/06/2012	Time:	1:30 PM	02/08/2012	Time:	10:15 AM	02/10/2012	Time:	11:00 AM
Monitors:	Kenny Learned			Kenny Learned			Kenny Learned		
Current Weather:	Overcast/None/Calm/Cool			Clear/sunny/None/Light breeze/Cool			Clear/sunny/None/Calm/Cool		
Water Color & Clarity:	Green/Murky			Yellow/Murky			Yellow/Murky		
Floating or Suspended Matter:	Observed	Bottom Deposits:	Observed	Observed	Bottom Deposits:	Observed	Observed	Bottom Deposits:	Observed
Aquatic Life:	Observed	Surface Oil:	None.	Observed	Surface Oil:	None.	Observed	Surface Oil:	None.
Fungi, Slimes or Objectionable Growths:	Observed			Observed			Observed		
Other Potential Nuisance:	None			None			None		

Field Measurement

Water temperature:					
Method	Field Inst.		Field Inst.		Field Inst.
Electrical Conductivity:					
Method					
Dissolved oxygen:					
Method					
pH:					
Method					
Turbidity:					
Method					

Monitoring Log Sheet

Agency:	ito and Vector Management District of Santa Barbara	Location	Riven Rock Estates (near Clover Lane x Rockbridge Road)
Applicator Name:	Karen Schultz	Water Body:	Hot Springs Creek Open waterway
Date of Application:	03/02/2012	Description:	~400 m section of pooled water in creekbed
Pesticide	Larvicide Vectobac G		

Visual Observation

	Background Monitoring			Event Monitoring			Post-Event Monitoring		
Date of Monitoring	03/01/2012	Time:	10:00 AM	03/02/2012	Time:	9:50 AM	03/06/2012	Time:	2:00 PM
Monitors:	Karen Schultz			Karen Schultz			Karen Schultz		
Current Weather:	Clear/sunny/None/Light breeze/Cool			Clear/sunny/None/Calm/Cool			Clear/sunny/None/Gusty/Cool		
Water Color & Clarity:	Colorless/Clear			Colorless/Clear			Colorless/Clear		
Floating or Suspended Matter:	Not Observed	Bottom Deposits:	Observed	Observed	Bottom Deposits:	Observed	Not Observed	Bottom Deposits:	Observed
Aquatic Life:	Observed	Surface Oil:	None.	Observed	Surface Oil:	None	Observed	Surface Oil:	None.
Fungi, Slimes or Objectionable Growths:	Not Observed			Not Observed			Not Observed		
Other Potential Nuisance:	None			None			None		

Field Measurement

Water temperature:					
Method	Field Inst.		Field Inst.		Field Inst.
Electrical Conductivity:					
Method					
Dissolved oxygen:					
Method					
pH:					
Method					
Turbidity:					
Method					

Monitoring Log Sheet

Agency:	ito and Vector Management District of Santa Barbara	Location	1400 Cabrillo Boulevard
Applicator Name:	Kenny Learned	Water Body:	Andree Clark Bird Refuge Pond
Date of Appilcation:	03/14/2012		
Pesticide	Larvicide	Vectobac G	Description: 34 acre brackish water

Visual Observation

	Background Monitoring			Event Monitoring			Post-Event Monitoring		
Date of Monitoring	03/13/2012	Time:	9:00 AM	03/14/2012	Time:	9:00 AM	03/16/2012	Time:	10:00 AM
Monitors:	Kenny Learned			Kenny Learned			Kenny Learned		
Current Weather:	Overcast/None/Light breeze/Cool			Clear/sunny/None/Light breeze/Cool			Overcast/None/Light breeze/Cool		
Water Color & Clarity:	Brown/Murky			Brown/Murky			Brown/Murky		
Floating or Suspended Matter:	Observed	Bottom Deposits:	Observed	Observed	Bottom Deposits:	Observed	Observed	Bottom Deposits:	Observed
Aquatic Life:	Observed	Surface Oil:	Flecks	Observed	Surface Oil:	None.	Observed	Surface Oil:	Flecks
Fungi, Slimes or Objectionable Growths:	Not Observed			Not Observed			Not Observed		
Other Potential Nuisance:	None			None			None		

Field Measurement

Water temperature:					
Method	Field Inst.		Field Inst.		Field Inst.
Electrical Conductivity:					
Method					
Dissolved oxygen:					
Method					
pH:					
Method					
Turbidity:					
Method					

Monitoring Log Sheet

Agency:	ito and Vector Management District of Santa Barbara	Location	4410 Cathedral Oaks
Applicator Name:	Karen Schultz	Water Body:	Drain at County Education building channel
Date of Appilcation:	03/29/2012	Description:	5' L x2' W x1' D
Pesticide	Larvicide Natular XRT		

Visual Observation

	Background Monitoring			Event Monitoring			Post-Event Monitoring		
Date of Monitoring	03/28/2012	Time:	2:30 PM	03/29/2012	Time:	1:30 PM	03/30/2012	Time:	1:30 PM
Monitors:	Karen Schultz			Karen Schultz			Karen Schultz		
Current Weather:	Partly cloudy/None/Light breeze/Cool			Partly cloudy/None/Light breeze/Cool			Partly cloudy/None/Light breeze/Cool		
Water Color & Clarity:	Brown/Murky			Brown/Murky			Brown/Murky		
Floating or Suspended Matter:	Observed	Bottom Deposits:	Observed	Observed	Bottom Deposits:	Observed	Observed	Bottom Deposits:	Observed
Aquatic Life:	Observed	Surface Oil:	None.	Not Observed	Surface Oil:	None.	Not Observed	Surface Oil:	None.
Fungi, Slimes or Objectionable Growths:	Not Observed			Not Observed			Not Observed		
Other Potential Nuisance:	None			None			None		

Field Measurement

Water temperature:					
Method	Field Inst.		Field Inst.		Field Inst.
Electrical Conductivity:					
Method					
Dissolved oxygen:					
Method					
pH:					
Method					
Turbidity:					
Method					

Monitoring Log Sheet

Agency:	ito and Vector Management District of Santa Barbara	Location	6400 Block of Hollister
Applicator Name:	Karen Schultz	Water Body:	Freshwater Marsh at Santa Barbara Airport Open waterway
Date of Application:	04/20/2012	Description:	6 acres
Pesticide	Larvicide Vectobac G		

Visual Observation

	Background Monitoring			Event Monitoring			Post-Event Monitoring		
Date of Monitoring	04/19/2012	Time:	2:30 PM	04/20/2012	Time:	9:45 AM	04/24/2012	Time:	1:30 PM
Monitors:	Karen Schultz			Karen Schultz			Karen Schultz		
Current Weather:	Partly cloudy/None/Light breeze/Cool			Hazy/None/Light breeze/Cool			Clear/sunny/None/Light breeze/Cool		
Water Color & Clarity:	Yellow/Clear			Yellow/Clear			Yellow/Clear		
Floating or Suspended Matter:	Observed	Bottom Deposits:	Observed	Observed	Bottom Deposits:	Observed	Observed	Bottom Deposits:	Observed
Aquatic Life:	Observed	Surface Oil:	None.	Observed	Surface Oil:	None.	Observed	Surface Oil:	None.
Fungi, Slimes or Objectionable Growths:	Not Observed			Not Observed			Not Observed		
Other Potential Nuisance:	None			None			None		

Field Measurement

Water temperature:					
Method	Field Inst.		Field Inst.		Field Inst.
Electrical Conductivity:					
Method					
Dissolved oxygen:					
Method					
pH:					
Method					
Turbidity:					
Method					

Monitoring Log Sheet

Agency:	ito and Vector Management District of Santa Barbara	Location	Glen Annie Road
Applicator Name:	Donald Cram	Water Body:	Glen Annie Road Irrigation Ditch Channel
Date of Appilcation:	04/27/2012	Description:	1000 sq. ft.
Pesticide	Larvicide Vectobac G		

Visual Observation

	Background Monitoring			Event Monitoring			Post-Event Monitoring		
Date of Monitoring	04/26/2012	Time:	12:45 PM	04/27/2012	Time:	1:15 PM	04/30/2012	Time:	9:00 AM
Monitors:	Donald Cram			Donald Cram			Donald Cram		
Current Weather:	Overcast/None/Light breeze/Cool			Clear/sunny/None/Light breeze/Warm/mild			Overcast/None/Light breeze/Cool		
Water Color & Clarity:	Colorless/Clear			Colorless/Clear			Colorless/Clear		
Floating or Suspended Matter:	Not Observed	Bottom Deposits:	Observed	Observed	Bottom Deposits:	Observed	Observed	Bottom Deposits:	Observed
Aquatic Life:	Observed	Surface Oil:	None.	Observed	Surface Oil:	None.	Observed	Surface Oil:	None.
Fungi, Slimes or Objectionable Growths:	Not Observed			Not Observed			Not Observed		
Other Potential Nuisance:	None			None			None		

Field Measurement

Water temperature:					
Method	Field Inst.		Field Inst.		Field Inst.
Electrical Conductivity:					
Method					
Dissolved oxygen:					
Method					
pH:					
Method					
Turbidity:					
Method					

Monitoring Log Sheet

Agency:	ito and Vector Management District of Santa Barbara	Location	1400 Cabrillo Boulevard
Applicator Name:	Kenny Learned	Water Body:	Andree Clark Bird Refuge Pond
Date of Appilcation:	05/01/2012		
Pesticide	Larvicide	Vectobac G	Description: 34 acres of brackish water

Visual Observation

	Background Monitoring			Event Monitoring			Post-Event Monitoring		
Date of Monitoring	04/30/12	Time:	9:30 AM	05/01/2012	Time:	9:30 AM	05/04/2012	Time:	9:30 AM
Monitors:	Kenny Learned			Kenny Learned			Kenny Learned		
Current Weather:	Overcast/None/Light breeze/Cool			Overcast/None/Light breeze/Cool			Clear/sunny/None/Light breeze/Warm/mild		
Water Color & Clarity:	Green/Murky			Green/Murky			Green/Murky		
Floating or Suspended Matter:	Observed	Bottom Deposits:	Not Observed	Observed	Bottom Deposits:	Not Observed	Observed	Bottom Deposits:	Not Observed
Aquatic Life:	Observed	Surface Oil:	None.	Observed	Surface Oil:	None.	Observed	Surface Oil:	None.
Fungi, Slimes or Objectionable Growths:	Not Observed			Not Observed			Not Observed		
Other Potential Nuisance:	None			None			None		

Field Measurement

Water temperature:					
Method	Field Inst.		Field Inst.		Field Inst.
Electrical Conductivity:					
Method					
Dissolved oxygen:					
Method					
pH:					
Method					
Turbidity:					
Method					

Monitoring Log Sheet

Agency:	ito and Vector Management District of Santa Barbara	Location	NorthWest section of salt marsh off Carpinteria Ave.
Applicator Name:	Royce Sharp	Water Body:	Carpinteria Salt Marsh--bulldozer tracks Channel
Date of Appilcation:	05/08/2012	Description:	one acre of bulldozer tracks
Pesticide	Larvicide Vectobac G		

Visual Observation

	Background Monitoring			Event Monitoring			Post-Event Monitoring		
Date of Monitoring	05/07/2012	Time:	9:00 AM	05/08/2012	Time:	9:00 AM	05/09/2012	Time:	9:30 AM
Monitors:	Royce Sharp			Royce Sharp			Royce Sharp		
Current Weather:	Partly cloudy/None/Calm/Warm/mild			Partly cloudy/None/Calm/Warm/mild			Clear/sunny/None/Calm/Warm/mild		
Water Color & Clarity:	Yellow/Clear			Yellow/Clear			Yellow/Clear		
Floating or Suspended Matter:	Observed	Bottom Deposits:	Observed	Observed	Bottom Deposits:	Observed	Observed	Bottom Deposits:	Observed
Aquatic Life:	Observed	Surface Oil:	Sheen	Observed	Surface Oil:	Sheen	Observed	Surface Oil:	Sheen
Fungi, Slimes or Objectionable Growths:	Not Observed			Not Observed			Not Observed		
Other Potential Nuisance:	Non-native ice plant, trash.			Non-native ice plant, trash.			non-native ice plant, trash		

Field Measurement

Water temperature:					
Method	Field Inst.		Field Inst.		Field Inst.
Electrical Conductivity:					
Method					
Dissolved oxygen:					
Method					
pH:					
Method					
Turbidity:					
Method					

Monitoring Log Sheet

Agency:	ito and Vector Management District of Santa Barbara	Location	Covington Wayx Camino Laguna Vista Goleta CA
Applicator Name:	Karen Schultz	Water Body:	Storm Drains Channel
Date of Appilcation:	05/15/2012	Description:	
Pesticide	Larvicide Natular XRT		

Visual Observation

	Background Monitoring			Event Monitoring			Post-Event Monitoring		
Date of Monitoring	05/14/2012	Time:	1:00 PM	05/15/2012	Time:	1:30 PM	05/17/2012	Time:	1:30 PM
Monitors:	Karen Schultz			Karen Schultz			Karen Schultz		
Current Weather:	Clear/sunny/None/Calm/Warm/mild			Clear/sunny/None/Calm/Warm/mild			Clear/sunny/None/Calm/Warm/mild		
Water Color & Clarity:	Yellow/Cloudy			Yellow/Cloudy			Yellow/Clear		
Floating or Suspended Matter:	Observed	Bottom Deposits:	Observed	Observed	Bottom Deposits:	Observed	Observed	Bottom Deposits:	Observed
Aquatic Life:	Observed	Surface Oil:	None.	Observed	Surface Oil:	None.	Not Observed	Surface Oil:	Sheen
Fungi, Slimes or Objectionable Growths:	Not Observed			Not Observed			Not Observed		
Other Potential Nuisance:	Plastic garbage.			Plastic garbage.			Plastic garbage.		

Field Measurement

Water temperature:					
Method	Field Inst.		Field Inst.		Field Inst.
Electrical Conductivity:					
Method					
Dissolved oxygen:					
Method					
pH:					
Method					
Turbidity:					
Method					

Monitoring Log Sheet

Agency:	ito and Vector Management District of Santa Barbara	Location	Covington Wayx Camino Venturoso Goleta CA
Applicator Name:	Karen Schultz	Water Body:	Inlet of Lake Los Carneros Pond
Date of Appilcation:	05/15/2012	Description:	.6 acre treated
Pesticide	Larvicide Vectobac G		

Visual Observation

	Background Monitoring			Event Monitoring			Post-Event Monitoring		
Date of Monitoring	05/14/2012	Time:	1:30 PM	05/15/2012	Time:	2:00 PM	05/17/2012	Time:	1:00 PM
Monitors:	Karen Schultz			Karen Schultz			Karen Schultz		
Current Weather:	Clear/sunny/None/Light breeze/Warm/mild			Clear/sunny/None/Calm/Warm/mild			Clear/sunny/None/Calm/Warm/mild		
Water Color & Clarity:	Yellow/Cloudy			Yellow/Cloudy			Yellow/Clear		
Floating or Suspended Matter:	Not Observed	Bottom Deposits:	Observed	Observed	Bottom Deposits:	Observed	Not Observed	Bottom Deposits:	Observed
Aquatic Life:	Observed	Surface Oil:	None.	Observed	Surface Oil:	None.	Observed	Surface Oil:	None.
Fungi, Slimes or Objectionable Growths:	Not Observed			Not Observed			Not Observed		
Other Potential Nuisance:	None			None			None		

Field Measurement

Water temperature:					
Method	Field Inst.		Field Inst.		Field Inst.
Electrical Conductivity:					
Method					
Dissolved oxygen:					
Method					
pH:					
Method					
Turbidity:					
Method					

Monitoring Log Sheet

Agency:	ito and Vector Management District of Santa Barbara	Location	Gwyne Ave. to Via Miguel
Applicator Name:	Vesna Ibarra	Water Body:	Atascadero Creek Open waterway
Date of Application:	05/16/2012	Description:	~.5 acre
Pesticide	Larvicide Vectobac G		

Visual Observation

	Background Monitoring			Event Monitoring			Post-Event Monitoring		
Date of Monitoring	05/15/2012	Time:	2:00 PM	05/16/2012	Time:	12:15 PM	05/17/2012	Time:	9:30 AM
Monitors:	Vesna Ibarra			Vesna Ibarra			Vesna Ibarra		
Current Weather:	Clear/sunny/None/Light breeze/Cool			Clear/sunny/None/Light breeze/Cool			Clear/sunny/None/Light breeze/Cool		
Water Color & Clarity:	Green/Cloudy			Green/Clear			Green/Clear		
Floating or Suspended Matter:	Not Observed	Bottom Deposits:	Observed	Observed	Bottom Deposits:	Observed	Not Observed	Bottom Deposits:	Observed
Aquatic Life:	Observed	Surface Oil:	None.	Observed	Surface Oil:	None.	Observed	Surface Oil:	None.
Fungi, Slimes or Objectionable Growths:	Not Observed			Not Observed			Not Observed		
Other Potential Nuisance:	None			None			None		

Field Measurement

Water temperature:					
Method	Field Inst.		Field Inst.		Field Inst.
Electrical Conductivity:					
Method					
Dissolved oxygen:					
Method					
pH:					
Method					
Turbidity:					
Method					

Monitoring Log Sheet

Agency:	ito and Vector Management District of Santa Barbara	Location	near 1205 Mira Canon Lane
Applicator Name:	Vesna Ibarra	Water Body:	Honda Preserve Creek Open waterway
Date of Application:	05/16/2012	Description:	180 sq. ft.
Pesticide	Larvicide Vectobac G		

Visual Observation

	Background Monitoring			Event Monitoring			Post-Event Monitoring		
Date of Monitoring	05/15/2012	Time:	10:00 AM	05/16/2012	Time:	10:15 AM	05/17/2012	Time:	12:00 PM
Monitors:	Vesna Ibarra			Vesna Ibarra			Vesna Ibarra		
Current Weather:	Clear/sunny/None/Light breeze/Cool			Clear/sunny/None/Light breeze/Cool			Clear/sunny/None/Light breeze/Cool		
Water Color & Clarity:	Brown/Murky			Brown/Murky			Brown/Murky		
Floating or Suspended Matter:	Observed	Bottom Deposits:	Observed	Observed	Bottom Deposits:	Observed	Observed	Bottom Deposits:	Observed
Aquatic Life:	Observed	Surface Oil:	None.	Observed	Surface Oil:	None.	Not Observed	Surface Oil:	None.
Fungi, Slimes or Objectionable Growths:	Not Observed			Not Observed			Not Observed		
Other Potential Nuisance:	None			None			None		

Field Measurement

Water temperature:					
Method	Field Inst.		Field Inst.		Field Inst.
Electrical Conductivity:					
Method					
Dissolved oxygen:					
Method					
pH:					
Method					
Turbidity:					
Method					

Monitoring Log Sheet

Agency:	ito and Vector Management District of Santa Barbara	Location	200 block of Meigs Road at La Mesa Park
Applicator Name:	Vesna Ibarra	Water Body:	Mesa Creek Open waterway
Date of Application:	05/16/2012	Description:	~5280 sq ft.
Pesticide	Larvicide Vectobac G		

Visual Observation

	Background Monitoring			Event Monitoring			Post-Event Monitoring		
Date of Monitoring	05/15/2012	Time:	12:00 PM	05/16/2012	Time:	11:00 AM	05/17/2012	Time:	11:30 AM
Monitors:	Vesna Ibarra			Vesna Ibarra			Vesna Ibarra		
Current Weather:	Clear/sunny/None/Light breeze/Cool			Clear/sunny/None/Light breeze/Cool			Clear/sunny/None/Light breeze/Cool		
Water Color & Clarity:	Brown/Clear			Brown/Clear			Brown/Clear		
Floating or Suspended Matter:	Observed	Bottom Deposits:	Observed	Observed	Bottom Deposits:	Observed	Observed	Bottom Deposits:	Observed
Aquatic Life:	Observed	Surface Oil:	None.	Observed	Surface Oil:	None.	Not Observed	Surface Oil:	None.
Fungi, Slimes or Objectionable Growths:	Not Observed			Not Observed			Not Observed		
Other Potential Nuisance:	None			None			None		

Field Measurement

Water temperature:					
Method	Field Inst.		Field Inst.		Field Inst.
Electrical Conductivity:					
Method					
Dissolved oxygen:					
Method					
pH:					
Method					
Turbidity:					
Method					

Monitoring Log Sheet

Agency:	ito and Vector Management District of Santa Barbara	Location	6464 Hollister Ave. Goleta CA
Applicator Name:	Karen Schultz	Water Body:	Willow Springs Freshwater Marsh Pond
Date of Application:	05/22/2012		
Pesticide	Larvicide	Vectobac G	Description: 1.5 acres

Visual Observation

	Background Monitoring			Event Monitoring			Post-Event Monitoring		
Date of Monitoring	05/21/2012	Time:	11:00 AM	05/22/2012	Time:	11:00 AM	05/23/2012	Time:	11:00 AM
Monitors:	Karen Schultz			Karen Schultz			Karen Schultz		
Current Weather:	Clear/sunny/None/Light breeze/Warm/mild			Clear/sunny/None/Calm/Warm/mild			Clear/sunny/None/Light breeze/Warm/mild		
Water Color & Clarity:	Colorless/Clear			Colorless/Clear			Colorless/Clear		
Floating or Suspended Matter:	Not Observed	Bottom Deposits:	Observed	Observed	Bottom Deposits:	Observed	Not Observed	Bottom Deposits:	Observed
Aquatic Life:	Observed	Surface Oil:	None.	Observed	Surface Oil:	None.	Observed	Surface Oil:	None.
Fungi, Slimes or Objectionable Growths:	Not Observed			Not Observed			Not Observed		
Other Potential Nuisance:	None			None			None		

Field Measurement

Water temperature:					
Method	Field Inst.		Field Inst.		Field Inst.
Electrical Conductivity:					
Method					
Dissolved oxygen:					
Method					
pH:					
Method					
Turbidity:					
Method					

Monitoring Log Sheet

Agency:	ito and Vector Management District of Santa Barbara	Location	Franklin Ranch Rd. Goleta CA
Applicator Name:	Vesna Ibarra	Water Body:	Las Vegas Creek Open waterway
Date of Appilcation:	05/30/2012	Description:	.5 acre
Pesticide	Larvicide Vectobac G		

Visual Observation

	Background Monitoring			Event Monitoring			Post-Event Monitoring		
Date of Monitoring	05/29/2012	Time:	2:00 PM	05/30/2012	Time:	10:30 AM	05/31/2012	Time:	12:00 PM
Monitors:	Vesna Ibarra			Vesna Ibarra			Vesna Ibarra		
Current Weather:	Clear/sunny/None/Light breeze/Cool			Clear/sunny/None/Calm/Cool			Clear/sunny/None/Light breeze/Warm/mild		
Water Color & Clarity:	Colorless/Clear			Colorless/Clear			Colorless/Clear		
Floating or Suspended Matter:	Observed	Bottom Deposits:	Observed	Observed	Bottom Deposits:	Observed	Observed	Bottom Deposits:	Observed
Aquatic Life:	Observed	Surface Oil:	None.	Observed	Surface Oil:	None.	Observed	Surface Oil:	None.
Fungi, Slimes or Objectionable Growths:	Not Observed			Not Observed			Not Observed		
Other Potential Nuisance:	None			None			None		

Field Measurement

Water temperature:					
Method	Field Inst.		Field Inst.		Field Inst.
Electrical Conductivity:					
Method					
Dissolved oxygen:					
Method					
pH:					
Method					
Turbidity:					
Method					

Monitoring Log Sheet

Agency:	ito and Vector Management District of Santa Barbara	Location	Evergreen Park, Goleta
Applicator Name:	Karen Schultz	Water Body:	Evergreen Creek Channel
Date of Appilcation:	05/31/2012	Description:	1 acre
Pesticide	Larvicide Vectobac G		

Visual Observation

	Background Monitoring			Event Monitoring			Post-Event Monitoring		
Date of Monitoring	05/30/2012	Time:	1:00 PM	05/31/2012	Time:	10:00 AM	06/01/2012	Time:	1:00 PM
Monitors:	Karen Schultz			Karen Schultz			Karen Schultz		
Current Weather:	Clear/sunny/None/Calm/Warm/mild			Clear/sunny/None/Calm/Warm/mild			Clear/sunny/None/Calm/Warm/mild		
Water Color & Clarity:	Brown/Cloudy			Brown/Cloudy			Brown/Cloudy		
Floating or Suspended Matter:	Not Observed	Bottom Deposits:	Observed	Observed	Bottom Deposits:	Observed	Not Observed	Bottom Deposits:	Observed
Aquatic Life:	Observed	Surface Oil:	None.	Observed	Surface Oil:	None.	Observed	Surface Oil:	None.
Fungi, Slimes or Objectionable Growths:	Not Observed			Not Observed			Not Observed		
Other Potential Nuisance:	Sewer odor.			Sewer odor.			Sewer odor.		

Field Measurement

Water temperature:					
Method	Field Inst.		Field Inst.		Field Inst.
Electrical Conductivity:					
Method					
Dissolved oxygen:					
Method					
pH:					
Method					
Turbidity:					
Method					

Monitoring Log Sheet

Agency:	ito and Vector Management District of Santa Barbara	Location	Carpinteria Salt Marsh on Carpinteria Avenue
Applicator Name:	Royce Sharp	Water Body:	ozer tracks in Northwest section of Salt M Channel
Date of Appilcation:	06/04/2012	Description:	Impounded water due to bulldozer tracks.
Pesticide	Larvicide Vectobac G		

Visual Observation

	Background Monitoring			Event Monitoring			Post-Event Monitoring		
Date of Monitoring	06/01/2012	Time:	2:00 PM	06/04/2012	Time:	9:00 AM	06/05/2012	Time:	2:15 PM
Monitors:	Royce Sharp			Royce Sharp			Royce Sharp		
Current Weather:	Clear/sunny/None/Calm/Warm/mild			Overcast/None/Calm/Warm/mild			Partly cloudy/None/Calm/Warm/mild		
Water Color & Clarity:	Colorless/Clear			Colorless/Clear			Colorless/Clear		
Floating or Suspended Matter:	Observed	Bottom Deposits:	Observed	Observed	Bottom Deposits:	Observed	Observed	Bottom Deposits:	Observed
Aquatic Life:	Observed	Surface Oil:	Small patches.	Observed	Surface Oil:	Small patches.	Observed	Surface Oil:	Small patches.
Fungi, Slimes or Objectionable Growths:	Not Observed			Not Observed			Not Observed		
Other Potential Nuisance:	Non-native iceplant and trash.			Non-native iceplant and trash.			Non-native iceplant and trash.		

Field Measurement

Water temperature:					
Method	Field Inst.		Field Inst.		Field Inst.
Electrical Conductivity:					
Method					
Dissolved oxygen:					
Method					
pH:					
Method					
Turbidity:					
Method					

Monitoring Log Sheet

Agency:	ito and Vector Management District of Santa Barbara	Location	1400 Cabrillo Boulevard	
Applicator Name:	Kenny Learned	Water Body:	Andree Clark Bird Refuge	Pond
Date of Appilcation:	06/06/2012		Description: 34 acres of brackish water	
Pesticide	Larvicide	Vectolex CG		

Visual Observation

	Background Monitoring			Event Monitoring			Post-Event Monitoring		
Date of Monitoring	06/04/2012	Time:	9:00 AM	06/06/2012	Time:	10:00 AM	06/11/2012	Time:	12:30 PM
Monitors:	Kenny Learned			Kenny Learned			Kenny Learned		
Current Weather:	Overcast/None/Calm/Warm/mild			Clear/sunny/None/Calm/Warm/mild			Overcast/None/Calm/Warm/mild		
Water Color & Clarity:	Green/Murky			Green/Murky			Green/Murky		
Floating or Suspended Matter:	Observed	Bottom Deposits:	Observed	Observed	Bottom Deposits:	Observed	Observed	Bottom Deposits:	Observed
Aquatic Life:	Observed	Surface Oil:	None.	Observed	Surface Oil:	None.	Observed	Surface Oil:	None.
Fungi, Slimes or Objectionable Growths:	Not Observed			Not Observed			Not Observed		
Other Potential Nuisance:	None			None			None		

Field Measurement

Water temperature:					
Method	Field Inst.		Field Inst.		Field Inst.
Electrical Conductivity:					
Method					
Dissolved oxygen:					
Method					
pH:					
Method					
Turbidity:					
Method					

Monitoring Log Sheet

Agency:	ito and Vector Management District of Santa Barbara	Location	Goleta, CA (Rancho Embarcadero)
Applicator Name:	Royce Sharp	Water Body:	Tecolote Creek Open waterway
Date of Application:	06/14/2012	Description:	
Pesticide	Larvicide Vectobac G		

Visual Observation

	Background Monitoring			Event Monitoring			Post-Event Monitoring		
Date of Monitoring	06/13/2012	Time:	2:00 PM	06/14/2012	Time:	1:00 PM	06/15/2012	Time:	9:45 AM
Monitors:	Royce Sharp			Royce Sharp			Royce Sharp		
Current Weather:	Overcast/None/Calm/Warm/mild			Overcast/None/Calm/Warm/mild			Overcast/Drizzle/Calm/Cool		
Water Color & Clarity:	Colorless/Clear			Colorless/Clear			Colorless/Clear		
Floating or Suspended Matter:	Not Observed	Bottom Deposits:	Observed	Observed	Bottom Deposits:	Observed	Not Observed	Bottom Deposits:	Observed
Aquatic Life:	Observed	Surface Oil:	None.	Observed	Surface Oil:	None.	Observed	Surface Oil:	None.
Fungi, Slimes or Objectionable Growths:	Not Observed			Not Observed			Not Observed		
Other Potential Nuisance:	None			None			None		

Field Measurement

Water temperature:					
Method	Field Inst.		Field Inst.		Field Inst.
Electrical Conductivity:					
Method					
Dissolved oxygen:					
Method					
pH:					
Method					
Turbidity:					
Method					

Monitoring Log Sheet

Agency:	ito and Vector Management District of Santa Barbara	Location	Santa Barbara Shores Dr., Coronado Dr.
Applicator Name:	Karen Schultz	Water Body:	tributary of Devereux Creek Open waterway
Date of Appilcation:	06/14/2012	Description:	
Pesticide	Larvicide Altosid pellets		

Visual Observation

	Background Monitoring			Event Monitoring			Post-Event Monitoring		
Date of Monitoring	06/13/2012	Time:	10:45 AM	06/14/2012	Time:	10:15 AM	06/15/2012	Time:	10:00 AM
Monitors:	Karen Schultz			Karen Schultz			Karen Schultz		
Current Weather:	Overcast/None/Light breeze/Cool			Overcast/None/Calm/Cool			Overcast/None/Calm/Cool		
Water Color & Clarity:	Brown/Cloudy			Brown/Cloudy			Brown/Cloudy		
Floating or Suspended Matter:	Observed	Bottom Deposits:	Observed	Observed	Bottom Deposits:	Observed	Observed	Bottom Deposits:	Observed
Aquatic Life:	Observed	Surface Oil:	None.	Observed	Surface Oil:	None.	Observed	Surface Oil:	None.
Fungi, Slimes or Objectionable Growths:	Not Observed			Not Observed			Not Observed		
Other Potential Nuisance:	None			None			None		

Field Measurement

Water temperature:					
Method	Field Inst.		Field Inst.		Field Inst.
Electrical Conductivity:					
Method					
Dissolved oxygen:					
Method					
pH:					
Method					
Turbidity:					
Method					

Monitoring Log Sheet

Agency:	ito and Vector Management District of Santa Barbara	Location	North end of Carpinteria Ave. Carpinteria Salt Marsh
Applicator Name:	Royce Sharp	Water Body:	Bulldozer track at NW end of Salt Marsh Channel
Date of Application:	06/21/2012	Description:	
Pesticide	Larvicide Vectobac G		

Visual Observation

	Background Monitoring			Event Monitoring			Post-Event Monitoring		
Date of Monitoring	06/20/2012	Time:	2:45 PM	06/21/2012	Time:	10:15 AM	06/22/2012	Time:	9:30 AM
Monitors:	Royce Sharp			Royce Sharp			Royce Sharp		
Current Weather:	Overcast/None/Calm/Warm/mild			Hazy/None/Calm/Warm/mild			Clear/sunny/None/Calm/Warm/mild		
Water Color & Clarity:	Yellow/Cloudy			Yellow/Cloudy			Yellow/Cloudy		
Floating or Suspended Matter:	Observed	Bottom Deposits:	Observed	Observed	Bottom Deposits:	Observed	Observed	Bottom Deposits:	Observed
Aquatic Life:	Observed	Surface Oil:	Flecks	Observed	Surface Oil:	Flecks	Observed	Surface Oil:	Flecks
Fungi, Slimes or Objectionable Growths:	Not Observed			Not Observed			Not Observed		
Other Potential Nuisance:	non-native ice plant, trash.			non-native iceplant, trash.			non-native iceplant, trash.		

Field Measurement

Water temperature:					
Method	Field Inst.		Field Inst.		Field Inst.
Electrical Conductivity:					
Method					
Dissolved oxygen:					
Method					
pH:					
Method					
Turbidity:					
Method					

Monitoring Log Sheet

Agency:	ito and Vector Management District of Santa Barbara	Location	S of 388 Storke Rd. Goleta CA
Applicator Name:	Karen Schultz	Water Body:	Drain/culvert Channel
Date of Appilcation:	06/27/2012	Description:	corner of seasonal marsh, freshwater runoff
Pesticide	Larvicide Vectolex CG		

Visual Observation

	Background Monitoring			Event Monitoring			Post-Event Monitoring		
Date of Monitoring	06/26/2012	Time:	2:00 PM	06/27/2012	Time:	1:20 PM	06/28/2012	Time:	1:30 PM
Monitors:	Karen Schultz			Karen Schultz			Karen Schultz		
Current Weather:	Clear/sunny/None/Light breeze/Warm/mild			Clear/sunny/None/Light breeze/Warm/mild			Clear/sunny/None/Light breeze/Warm/mild		
Water Color & Clarity:	orange (rust)/Clear			orange (rust)/Clear			orange (rust)/Clear		
Floating or Suspended Matter:	Observed	Bottom Deposits:	Observed	Observed	Bottom Deposits:	Observed	Observed	Bottom Deposits:	Observed
Aquatic Life:	Observed	Surface Oil:	None.	Observed	Surface Oil:	None.	Not Observed	Surface Oil:	None.
Fungi, Slimes or Objectionable Growths:	Not Observed			Not Observed			Not Observed		
Other Potential Nuisance:	None			None			None		

Field Measurement

Water temperature:					
Method	Field Inst.		Field Inst.		Field Inst.
Electrical Conductivity:					
Method					
Dissolved oxygen:					
Method					
pH:					
Method					
Turbidity:					
Method					

Monitoring Log Sheet

Agency:	ito and Vector Management District of Santa Barbara	Location	North end of Carpinteria Avenue, Carpinteria Salt Marsh
Applicator Name:	Royce Sharp	Water Body:	Bulldozer tracks at NW end of Salt Marsh Channel
Date of Application:	07/03/2012	Description:	
Pesticide	Larvicide Vectobac G		

Visual Observation

	Background Monitoring			Event Monitoring			Post-Event Monitoring		
Date of Monitoring	07/02/2012	Time:	9:45 AM	07/03/2012	Time:	8:45 AM	07/05/2012	Time:	12:15 PM
Monitors:	Royce Sharp			Royce Sharp			Royce Sharp		
Current Weather:	Clear/sunny/None/Calm/Warm/mild			Overcast/None/Calm/Cool			Overcast/None/Calm/Warm/mild		
Water Color & Clarity:	Yellow/Cloudy			Yellow/Cloudy			Yellow/Cloudy		
Floating or Suspended Matter:	Observed	Bottom Deposits:	Observed	Observed	Bottom Deposits:	Observed	Observed	Bottom Deposits:	Observed
Aquatic Life:	Observed	Surface Oil:	Flecks	Observed	Surface Oil:	Flecks	Observed	Surface Oil:	Flecks
Fungi, Slimes or Objectionable Growths:	Not Observed			Not Observed			Not Observed		
Other Potential Nuisance:	Non-native iceplant, Trash.			Trash.			non-native iceplant, trash.		

Field Measurement

Water temperature:					
Method	Field Inst.		Field Inst.		Field Inst.
Electrical Conductivity:					
Method					
Dissolved oxygen:					
Method					
pH:					
Method					
Turbidity:					
Method					

Monitoring Log Sheet

Agency:	ito and Vector Management District of Santa Barbara	Location	Franklin Ranch Rd at La Goleta Rd.
Applicator Name:	Vesna Ibarra	Water Body:	Las Vegas Creek Open waterway
Date of Application:	07/06/2012	Description:	
Pesticide	Larvicide Vectobac G		

Visual Observation

	Background Monitoring			Event Monitoring			Post-Event Monitoring		
Date of Monitoring	07/05/2012	Time:	1:00 PM	07/06/2012	Time:	2:40 PM	07/09/2012	Time:	11:30 AM
Monitors:	Vesna Ibarra			Vesna Ibarra			Vesna Ibarra		
Current Weather:	Partly cloudy/None/Light breeze/Cool			Clear/sunny/None/Light breeze/Warm/mild			Clear/sunny/None/Light breeze/Cool		
Water Color & Clarity:	Green/Clear			Green/Clear			Green/Clear		
Floating or Suspended Matter:	Not Observed	Bottom Deposits:	Observed	Observed	Bottom Deposits:	Observed	Not Observed	Bottom Deposits:	Observed
Aquatic Life:	Observed	Surface Oil:	None.	Observed	Surface Oil:	None.	Observed	Surface Oil:	None.
Fungi, Slimes or Objectionable Growths:	Not Observed			Not Observed			Not Observed		
Other Potential Nuisance:	None			None			None		

Field Measurement

Water temperature:					
Method	Field Inst.		Field Inst.		Field Inst.
Electrical Conductivity:					
Method					
Dissolved oxygen:					
Method					
pH:					
Method					
Turbidity:					
Method					

Monitoring Log Sheet

Agency:	ito and Vector Management District of Santa Barbara	Location	1006 Via Los Padres, Goleta CA	
Applicator Name:	Vesna Ibarra	Water Body:	lawn drains/ditch	Channel
Date of Application:	07/06/2012		Description:	
Pesticide	Larvicide	Vectobac G		

Visual Observation

	Background Monitoring			Event Monitoring			Post-Event Monitoring		
Date of Monitoring	07/05/2012	Time:	3:00 PM	07/06/2012	Time:	9:45 AM	07/09/2012	Time:	10:20 AM
Monitors:	Vesna Ibarra			Vesna Ibarra			Vesna Ibarra		
Current Weather:	Partly cloudy/None/Light breeze/Cool			Partly cloudy/None/Calm/Cool			Clear/sunny/None/Light breeze/Cool		
Water Color & Clarity:	Gray./Clear			Gray./Clear			Green/Clear		
Floating or Suspended Matter:	Observed	Bottom Deposits:	Observed	Observed	Bottom Deposits:	Observed	Observed	Bottom Deposits:	Observed
Aquatic Life:	Observed	Surface Oil:	None.	Not Observed	Surface Oil:	None.	Not Observed	Surface Oil:	None.
Fungi, Slimes or Objectionable Growths:	Not Observed			Not Observed			Not Observed		
Other Potential Nuisance:	None			None			None		

Field Measurement

Water temperature:					
Method	Field Inst.		Field Inst.		Field Inst.
Electrical Conductivity:					
Method					
Dissolved oxygen:					
Method					
pH:					
Method					
Turbidity:					
Method					

Monitoring Log Sheet

Agency:	ito and Vector Management District of Santa Barbara	Location	Berkeley Rd, Goleta CA
Applicator Name:	Vesna Ibarra	Water Body:	Flood Control Channel Channel
Date of Appilcation:	07/06/2012	Description:	
Pesticide	Larvicide Vectobac G		

Visual Observation									
	Background Monitoring			Event Monitoring			Post-Event Monitoring		
Date of Monitoring	07/05/2012	Time:	10:50 AM	07/06/2012	Time:	1:00 PM	07/09/2012	Time:	11:00 AM
Monitors:	Vesna Ibarra			Vesna Ibarra			Vesna Ibarra		
Current Weather:	Partly cloudy/None/Calm/Cool			Partly cloudy/None/Light breeze/Cool			Clear/sunny/None/Light breeze/Cool		
Water Color & Clarity:	Green/Clear			Green/Clear			Green/Clear		
Floating or Suspended Matter:	Observed	Bottom Deposits:	Observed	Observed	Bottom Deposits:	Observed	Observed	Bottom Deposits:	Observed
Aquatic Life:	Observed	Surface Oil:	None.	Not Observed	Surface Oil:	None.	Not Observed	Surface Oil:	None.
Fungi, Slimes or Objectionable Growths:	Not Observed			Not Observed			Not Observed		
Other Potential Nuisance:	None			None			None		

Field Measurement						
Water temperature:						
Method	Field Inst.		Field Inst.		Field Inst.	
Electrical Conductivity:						
Method						
Dissolved oxygen:						
Method						
pH:						
Method						
Turbidity:						
Method						

Monitoring Log Sheet

Agency:	ito and Vector Management District of Santa Barbara	Location	NW corner of Cabrillo Blvd. and Cesar Chavez St.
Applicator Name:	Royce Sharp	Water Body:	ditch/remnant marsh at RR tracks Channel
Date of Appilcation:	07/11/2012	Description:	
Pesticide	Larvicide Vectobac G		

Visual Observation

	Background Monitoring			Event Monitoring			Post-Event Monitoring		
Date of Monitoring	07/10/2012	Time:	3:00 PM	07/11/2012	Time:	2:00 PM	07/12/2012	Time:	3:00 PM
Monitors:	Royce Sharp			Royce Sharp			Royce Sharp		
Current Weather:	Partly cloudy/None/Calm/Warm/mild			Partly cloudy/None/Calm/Warm/mild			Partly cloudy/None/Calm/Warm/mild		
Water Color & Clarity:	Brown/Murky			Brown/Murky			Brown/Murky		
Floating or Suspended Matter:	Observed	Bottom Deposits:	Observed	Observed	Bottom Deposits:	Observed	Observed	Bottom Deposits:	Observed
Aquatic Life:	Observed	Surface Oil:	Patches.	Observed	Surface Oil:	Patches.	Not Observed	Surface Oil:	Patches.
Fungi, Slimes or Objectionable Growths:	Not Observed			Not Observed			Not Observed		
Other Potential Nuisance:	Various pollution and Trash.			Various pollution and trash.			Various pollutants, trash.		

Field Measurement

Water temperature:					
Method	Field Inst.		Field Inst.		Field Inst.
Electrical Conductivity:					
Method					
Dissolved oxygen:					
Method					
pH:					
Method					
Turbidity:					
Method					

Monitoring Log Sheet

Agency:	ito and Vector Management District of Santa Barbara	Location	NW corner of Cabrillo Blvd. and Cesar Chavez St.
Applicator Name:	Royce Sharp	Water Body:	ditch/remnant marsh at RR tracks Channel
Date of Appilcation:	07/12/12	Description:	
Pesticide	Larvicide Vectobac G		

Visual Observation

	Background Monitoring			Event Monitoring			Post-Event Monitoring		
Date of Monitoring	07/11/12	Time:	11:45 AM	07/12/2012	Time:	1:00 PM	07/13/2012	Time:	2:00 PM
Monitors:	Royce Sharp			Royce Sharp			Royce Sharp		
Current Weather:	Overcast/None/Calm/Warm/mild			Partly cloudy/None/Calm/Warm/mild			Partly cloudy/None/Calm/Warm/mild		
Water Color & Clarity:	Rust colored./Cloudy			rust-colored /Cloudy			rust-colored/Cloudy		
Floating or Suspended Matter:	Observed	Bottom Deposits:	Observed	Observed	Bottom Deposits:	Observed	Observed	Bottom Deposits:	Observed
Aquatic Life:	Observed	Surface Oil:	None.	Observed	Surface Oil:	None.	Not Observed	Surface Oil:	None.
Fungi, Slimes or Objectionable Growths:	Not Observed			Not Observed			Not Observed		
Other Potential Nuisance:	non-native eucalyptus, Trash.			non native eucalyptus, trash.			non-native eucalyptus, trash.		

Field Measurement

Water temperature:					
Method	Field Inst.		Field Inst.		Field Inst.
Electrical Conductivity:					
Method					
Dissolved oxygen:					
Method					
pH:					
Method					
Turbidity:					
Method					

Monitoring Log Sheet

Agency:	ito and Vector Management District of Santa Barbara	Location	Mesa Park in Santa Barbara
Applicator Name:	Royce Sharp	Water Body:	Mesa Park Creek Open waterway
Date of Appilcation:	07/12/2012	Description:	
Pesticide	Larvicide Vectobac G		

Visual Observation									
	Background Monitoring			Event Monitoring			Post-Event Monitoring		
Date of Monitoring	07/11/2012	Time:	10:00 AM	07/12/2012	Time:	11:00 AM	07/13/2012	Time:	1:15 PM
Monitors:	Royce Sharp			Royce Sharp			Royce Sharp		
Current Weather:	Partly cloudy/None/Calm/Warm/mild			Partly cloudy/None/Calm/Warm/mild			Partly cloudy/None/Calm/Warm/mild		
Water Color & Clarity:	Rust colored./Clear			rust-colored /Clear			rust-colored/Clear		
Floating or Suspended Matter:	Observed	Bottom Deposits:	Observed	Observed	Bottom Deposits:	Observed	Observed	Bottom Deposits:	Observed
Aquatic Life:	Observed	Surface Oil:	None.	Observed	Surface Oil:	None.	Observed	Surface Oil:	None.
Fungi, Slimes or Objectionable Growths:	Not Observed			Not Observed			Not Observed		
Other Potential Nuisance:	non-native algerian ivy, Trash.			non native algerian ivy, trash.			non-native algerian ivy, trash.		

Field Measurement						
Water temperature:						
Method	Field Inst.		Field Inst.		Field Inst.	
Electrical Conductivity:						
Method						
Dissolved oxygen:						
Method						
pH:						
Method						
Turbidity:						
Method						

Monitoring Log Sheet

Agency:	ito and Vector Management District of Santa Barbara	Location	Loma Alta Dr. near Santa Barbara City College
Applicator Name:	Royce Sharp	Water Body:	Creek west of Santa Barbara City College Open waterway
Date of Appilcation:	0712/2012	Description:	
Pesticide	Larvicide Vectobac G		

Visual Observation

	Background Monitoring			Event Monitoring			Post-Event Monitoring		
Date of Monitoring	07/11/12	Time:	9:30 AM	07/12/12	Time:	1:30 PM	07/13/12	Time:	9:30 AM
Monitors:	Royce Sharp			Royce Sharp			Royce Sharp		
Current Weather:	Partly cloudy/None/Calm/Warm/mild			Partly cloudy/None/Calm/Warm/mild			Partly cloudy/None/Calm/Cool		
Water Color & Clarity:	Brown/Murky			Brown/Murky			Brown/Murky		
Floating or Suspended Matter:	Observed	Bottom Deposits:	Observed	Observed	Bottom Deposits:	Observed	Observed	Bottom Deposits:	Observed
Aquatic Life:	Observed	Surface Oil:	None.	Observed	Surface Oil:	None.	Observed	Surface Oil:	None.
Fungi, Slimes or Objectionable Growths:	Not Observed			Not Observed			Not Observed		
Other Potential Nuisance:	Trash.			Trash.			Trash.		

Field Measurement

Water temperature:					
Method	Field Inst.		Field Inst.		Field Inst.
Electrical Conductivity:					
Method					
Dissolved oxygen:					
Method					
pH:					
Method					
Turbidity:					
Method					

Monitoring Log Sheet

Agency:	ito and Vector Management District of Santa Barbara	Location	El Colegio Rd. and Los Carneros Rd., Isla Vista
Applicator Name:	Jessica Sprigg	Water Body:	Clemente wetland, bioswales at student hq Channel
Date of Appilcation:	07/13/2012	Description:	shwater wetland with tules, stormwater management syste
Pesticide	Larvicide Vectobac G		

Visual Observation

	Background Monitoring			Event Monitoring			Post-Event Monitoring		
Date of Monitoring	07/12/12	Time:	2:00 PM	07/13/12	Time:	2:45 PM	07/16/12	Time:	1:15 PM
Monitors:	Karen Schultz			Karen Schultz			Karen Schultz		
Current Weather:	Partly cloudy/None/Calm/Cool			Clear/sunny/None/Light breeze/Warm/mild			Partly cloudy/None/Light breeze/Cool		
Water Color & Clarity:	Orange /Clear			Orange./Clear			Orange./Clear		
Floating or Suspended Matter:	Observed	Bottom Deposits:	Observed	Observed	Bottom Deposits:	Observed	Observed	Bottom Deposits:	Observed
Aquatic Life:	Observed	Surface Oil:	None.	Observed	Surface Oil:	None.	Observed	Surface Oil:	None.
Fungi, Slimes or Objectionable Growths:	Not Observed			Not Observed			Not Observed		
Other Potential Nuisance:	None			None			None		

Field Measurement

Water temperature:					
Method	Field Inst.		Field Inst.		Field Inst.
Electrical Conductivity:					
Method					
Dissolved oxygen:					
Method					
pH:					
Method					
Turbidity:					
Method					

Monitoring Log Sheet

Agency:	ito and Vector Management District of Santa Barbara	Location	UCSB Harder Stadium, Stadium Rd.
Applicator Name:	Jessica Sprigg	Water Body:	storm Drain on South side of Stadium Road Channel
Date of Application:	07/13/2012		
Pesticide	Larvicide	Vectobac G	Description: 4'x5' storm

Visual Observation

	Background Monitoring			Event Monitoring			Post-Event Monitoring		
Date of Monitoring	07/12/12	Time:	10:30 AM	07/13/12	Time:	1:50 PM	07/16/12	Time:	1:45 PM
Monitors:	Karen Schultz			Karen Schultz			Karen Schultz		
Current Weather:	Partly cloudy/None/Calm/Cool			Clear/sunny/None/Light breeze/Warm/mild			Partly cloudy/None/Light breeze/Cool		
Water Color & Clarity:	Yellow/Clear			Yellow/Clear			Yellow/Clear		
Floating or Suspended Matter:	Not Observed	Bottom Deposits:	Not Observed	Observed	Bottom Deposits:	Not Observed	Not Observed	Bottom Deposits:	Not Observed
Aquatic Life:	Observed	Surface Oil:	None.	Observed	Surface Oil:	None.	Not Observed	Surface Oil:	None.
Fungi, Slimes or Objectionable Growths:	Not Observed			Not Observed			Not Observed		
Other Potential Nuisance:	None			None			None		

Field Measurement

Water temperature:					
Method	Field Inst.		Field Inst.		Field Inst.
Electrical Conductivity:					
Method					
Dissolved oxygen:					
Method					
pH:					
Method					
Turbidity:					
Method					

Monitoring Log Sheet

Agency:	Ito and Vector Management District of Santa Barbara	Location	JCSB, Parking Lot 29. 6500-6506 El Colegio Rd. Isla Vista	
Applicator Name:	Jessica Sprigg	Water Body:	NE end of Drainage ditch	Channel
Date of Application:	07/13/2012		Description:	
Pesticide	Larvicide	Vectobac G		
2'x1' area of drainage ditch				

Visual Observation

	Background Monitoring			Event Monitoring			Post-Event Monitoring		
Date of Monitoring	07/12/12	Time:	2:30 PM	07/13/12	Time:	1:20 PM	07/16/12	Time:	2:15 PM
Monitors:	Karen Schultz			Karen Schultz			Karen Schultz		
Current Weather:	Partly cloudy/None/Calm/Cool			Clear/sunny/None/Light breeze/Warm/mild			Partly cloudy/None/Light breeze/Cool		
Water Color & Clarity:	Colorless/Clear			Colorless/Clear			Colorless/Clear		
Floating or Suspended Matter:	Observed	Bottom Deposits:	Observed	Observed	Bottom Deposits:	Observed	Observed	Bottom Deposits:	Observed
Aquatic Life:	Observed	Surface Oil:	None.	Observed	Surface Oil:	None.	Observed	Surface Oil:	None.
Fungi, Slimes or Objectionable Growths:	Not Observed			Not Observed			Not Observed		
Other Potential Nuisance:	None			None			None		

Field Measurement

Water temperature:					
Method	Field Inst.		Field Inst.		Field Inst.
Electrical Conductivity:					
Method					
Dissolved oxygen:					
Method					
pH:					
Method					
Turbidity:					
Method					