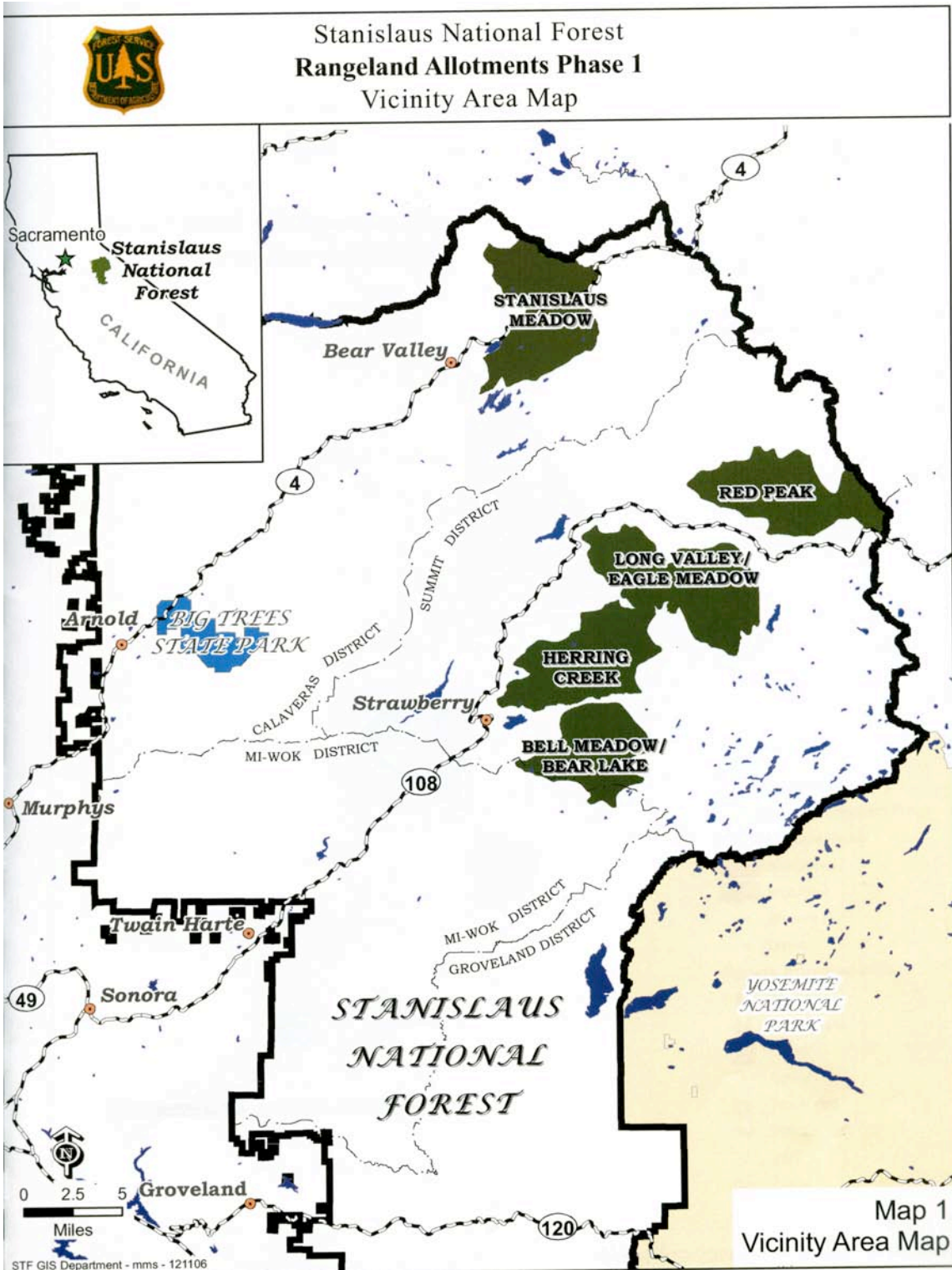


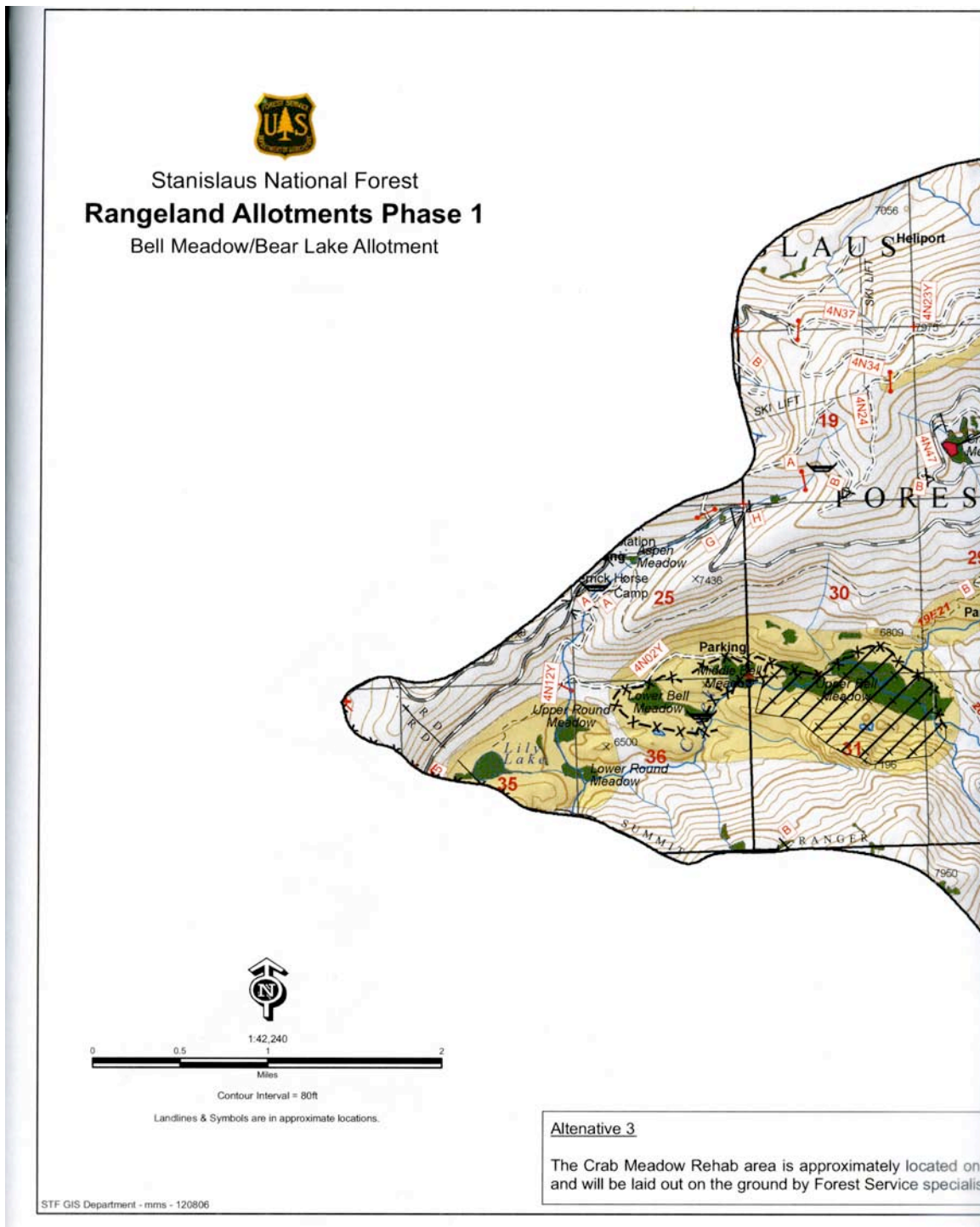
Appendix 7  
1. Vicinity Area Map<sup>7</sup>



**2. LRM – map of the sample site associated with Lower Round Meadow (image from Google Earth)**



**3. Map of the Bell Meadow/Bear Lake Allotment showing where Lower Round Meadow is located within the allotment<sup>7</sup>**

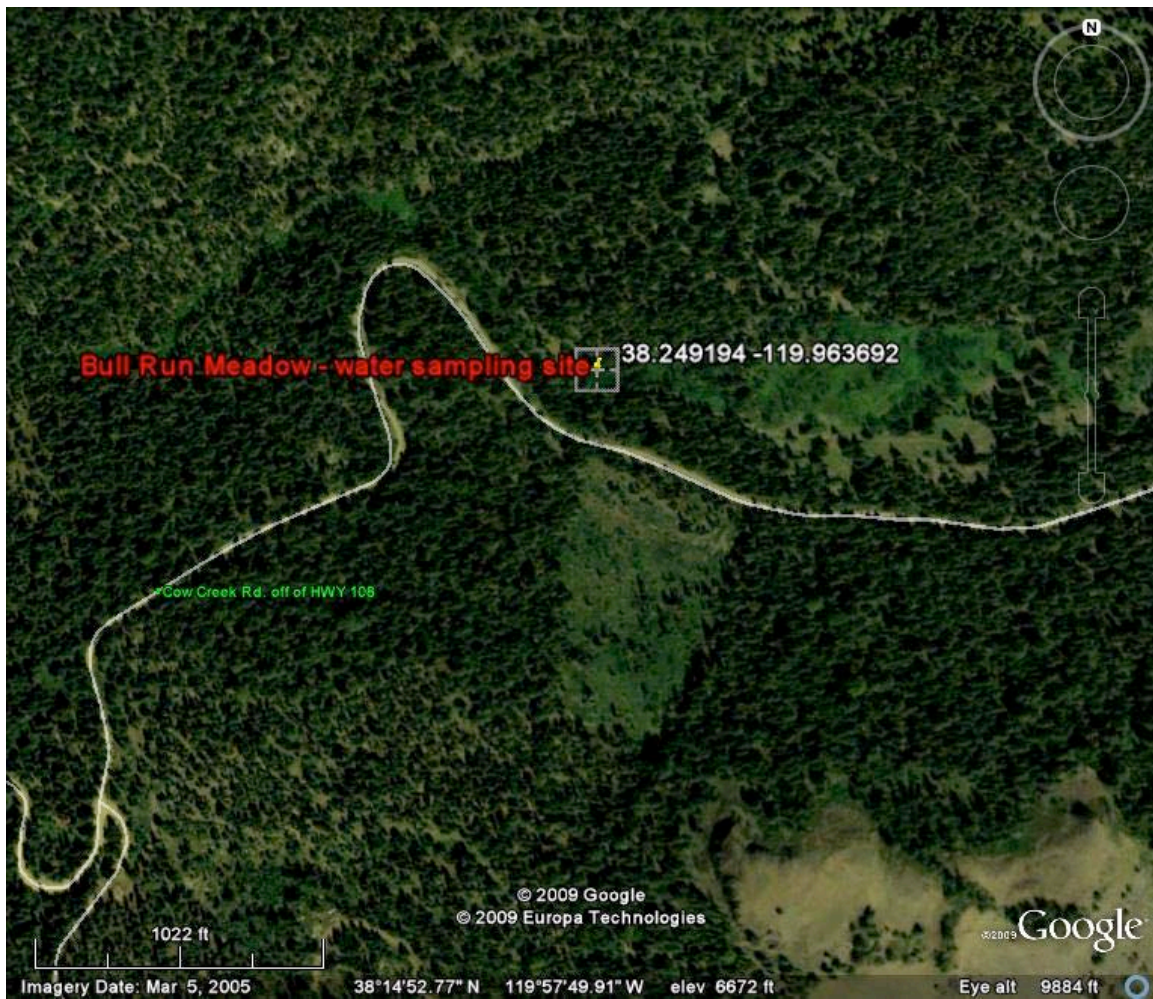


Legal Description for the Lower Round Meadow water sample site:  
 LRM – T3N R17E Sec 36 NW ¼ of the SW ¼

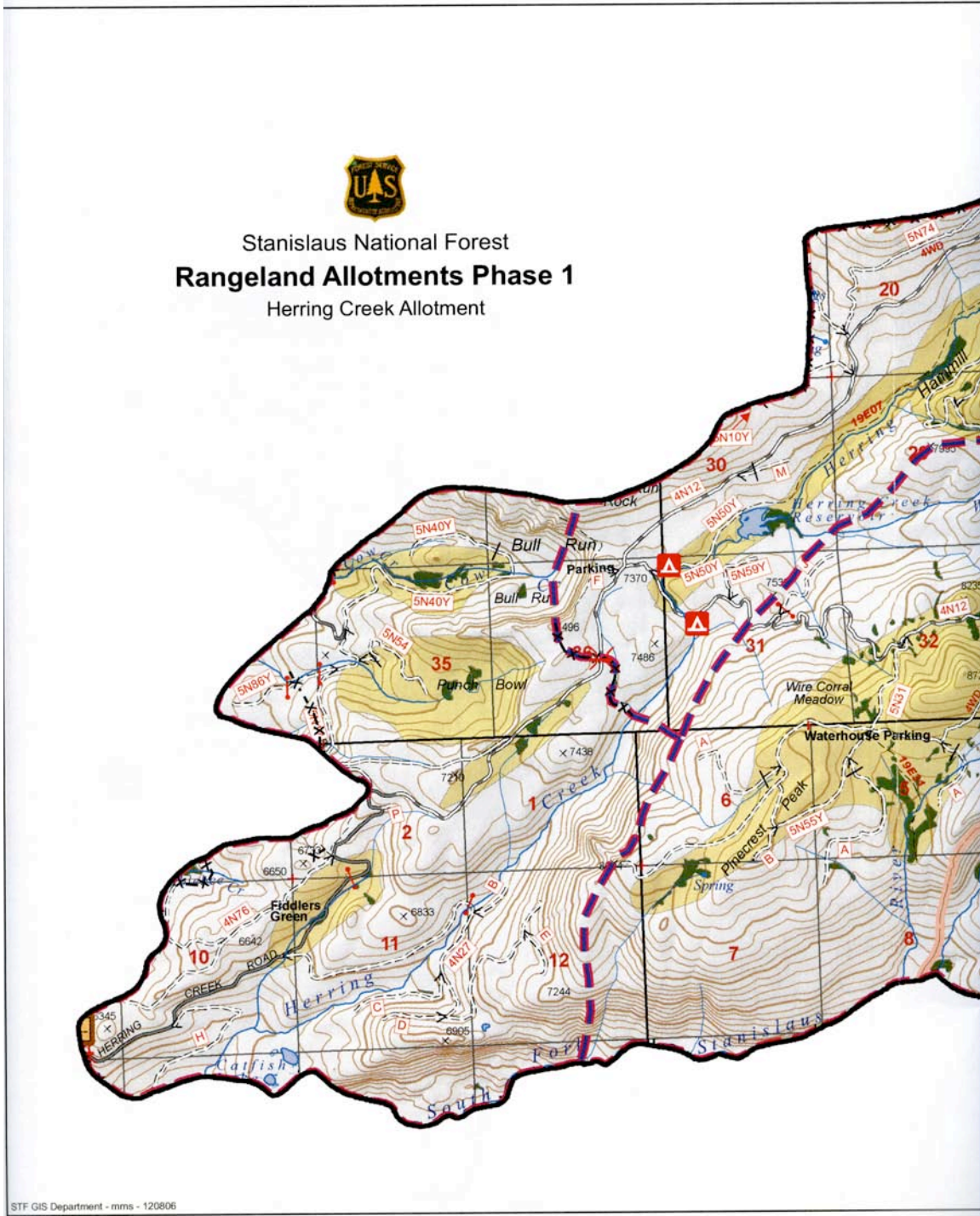
**4. UFG – map of the sample site associated with Upper Fiddlers Green Meadow (image from Google Earth)**



5. BR – map of sample site associated with Bull Run Meadow (image from Google Earth)

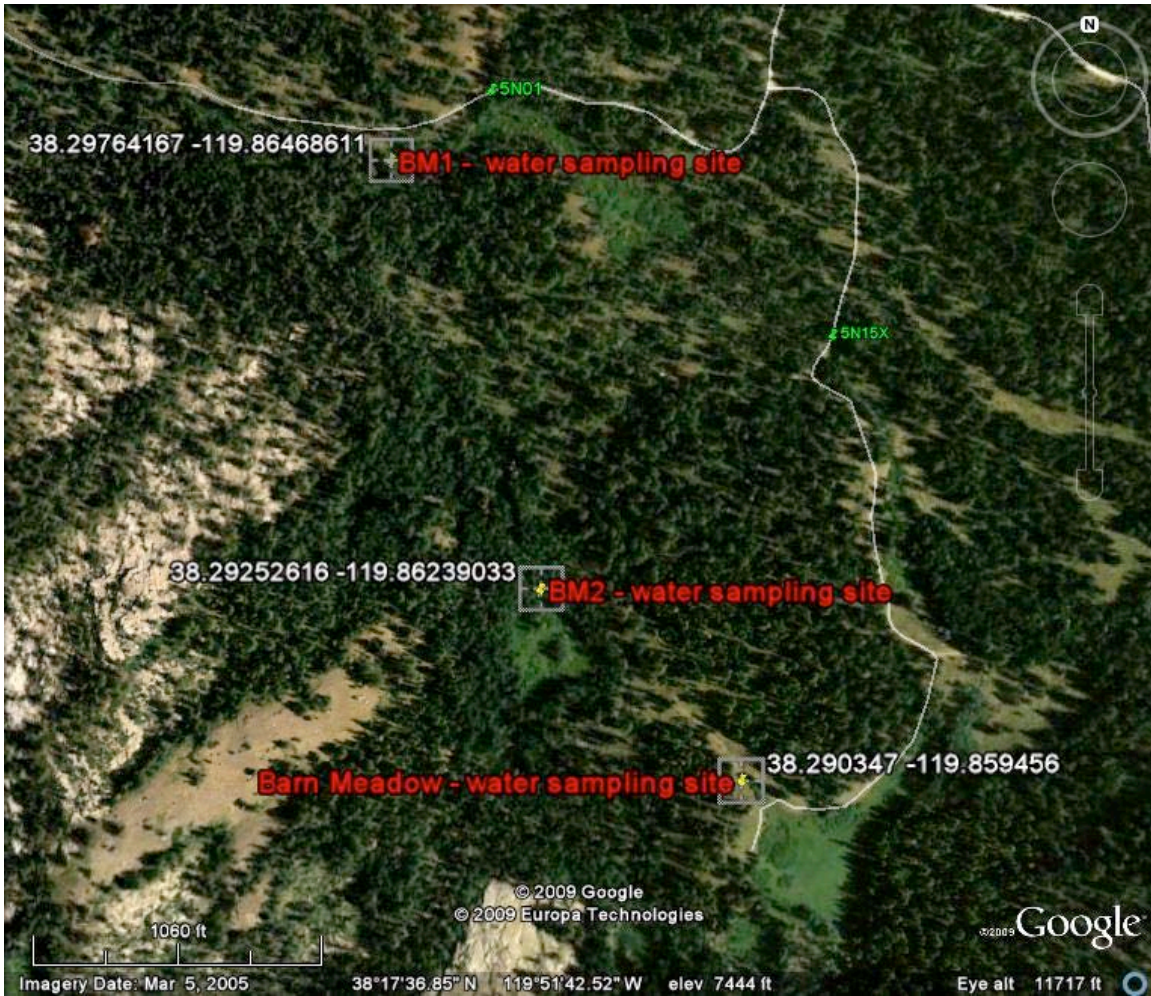


**6. Map of the Herring Creek Allotment showing where Bull Run and Upper Fiddlers Green Meadows are located within the allotment<sup>7</sup>**

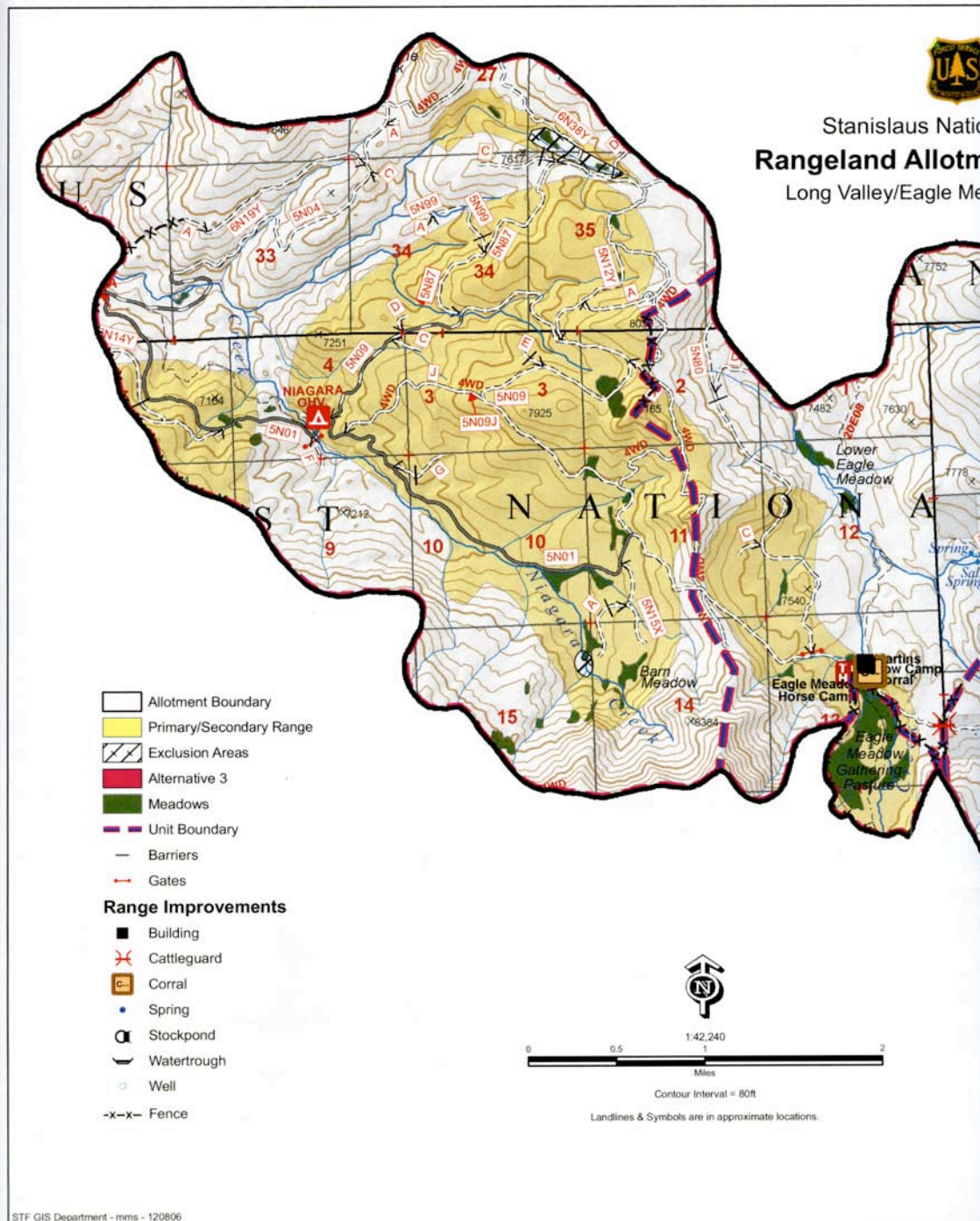


Legal Description for the Bull Run and Upper Fiddlers Green water sampling sites:  
BR– T5N R18E Sec 35 NW ¼ of the NE ¼  
UFG – T4N R18E Sec 11 NE ¼ of the NW ¼

**7. BM – map of sample site associated with Barn Meadow (image from Google Earth)**



**8. Partial Map of the Long Valley/Eagle Meadow Allotment showing where Barn Meadow is located within the allotment<sup>7</sup>**

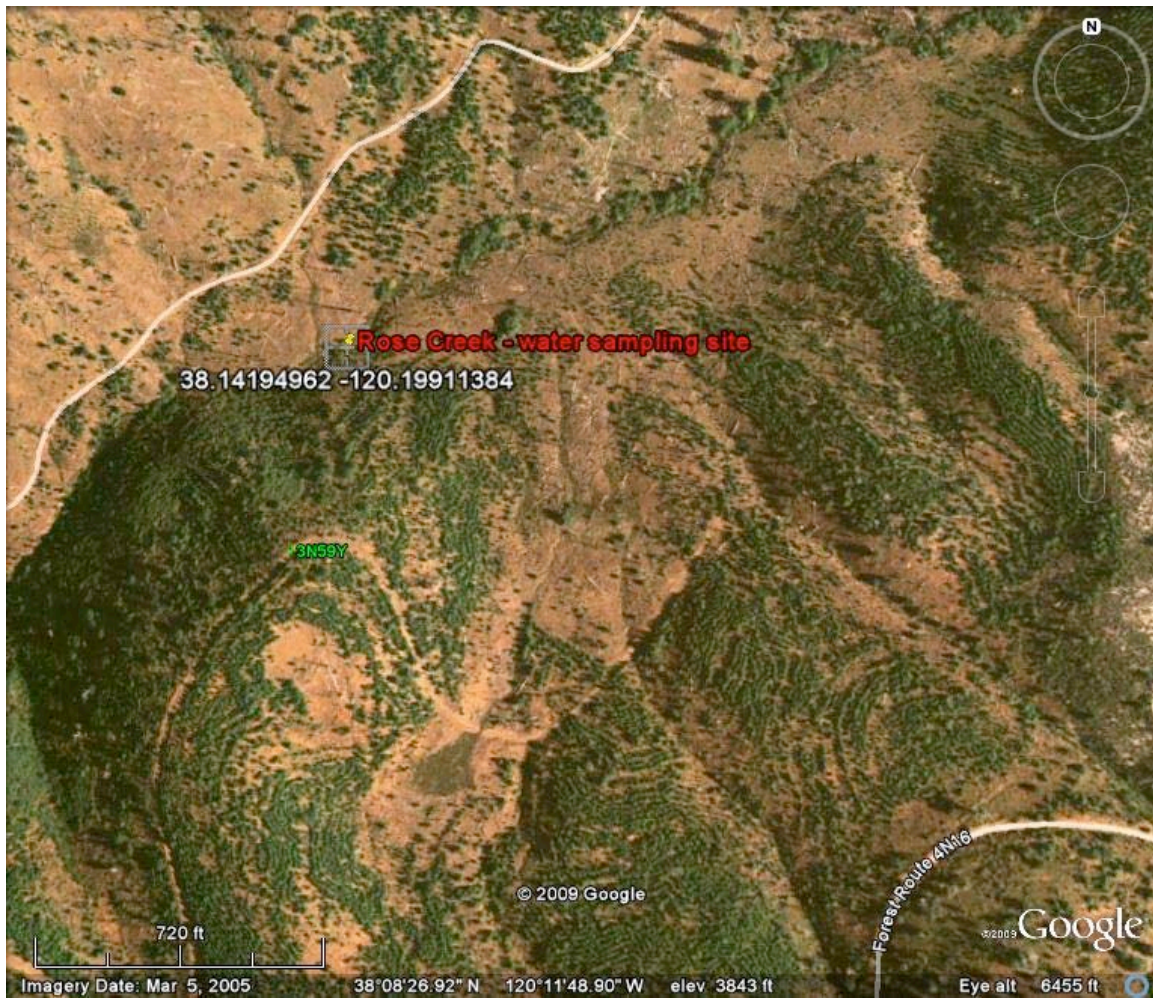


Legal Description for the Barn Meadow water sampling sites:

- BM – T5N R18E Sec 14 SW ¼ of the NW ¼
- BM1 – T5N R18E Sec 15 NE ¼ of the NE ¼
- BM2 – T5N R18E Sec 10 NW ¼ of the SE ¼



**9. RC – map of the Rose Creek sample site (image from Google Earth)**



Legal Description for the Rose Creek water sample site:

RC – T3N R16E Sec 3 NE ¼ of the SE 1/4

**10. Map of the tributary spring to Rose Creek “above” / “below” sample sites (image from Google Earth)**



Legal Description for the tributary spring to Rose Creek “above”/ “below” sample sites:

TRC “above” – T4N R16E Sec 35 NE ¼ of the NW ¼

TRC “below” – T4N R16E Sec 35 SE ¼ of the NW ¼

**11. BoM – map of the sample site associated with Bourland Meadow (image from Google Earth)**



Legal Description for the Bourland Meadow water sample site:

BoM – T3N R19E Sec 17 SE ¼ of the SW ¼