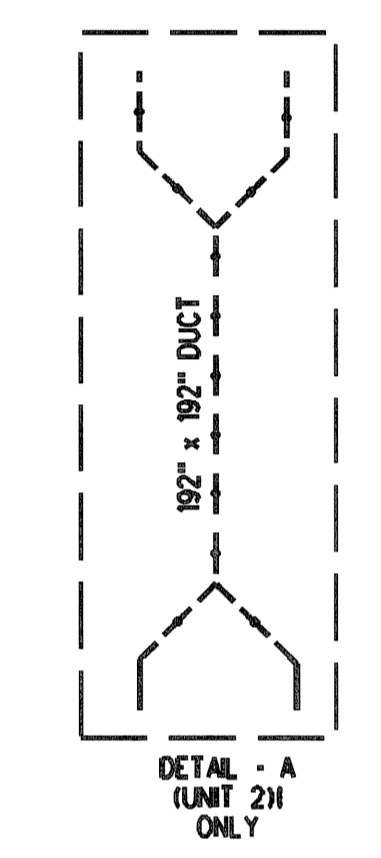
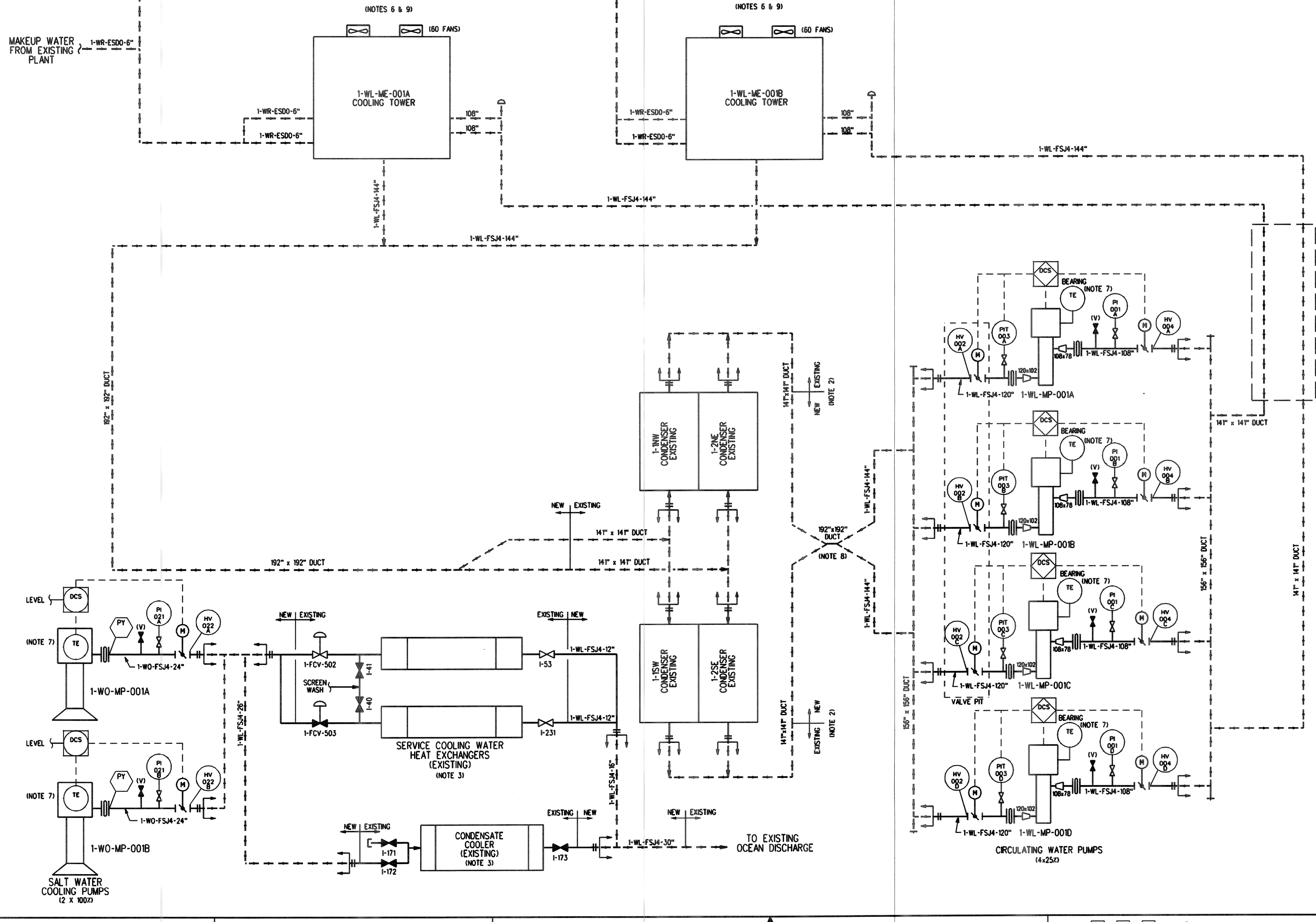


- NOTES:**
- P&ID SHOWS UNIT 1 SYSTEM. UNIT 2 SYSTEM IS IDENTICAL EXCEPT AS NOTED AND EQUIPMENT NUMBERS BEGINNING WITH "2".
 - BURIED PIPING CONCRETE DUCTS TO AND FROM THE CONDENSERS ARE MODIFIED/REROUTED OUTSIDE OF THE TURBINE BUILDING. THE EXISTING DUCTS TO/FROM THE INTAKE AND PLANT OUTFALL ARE SEALED AS NEEDED.
 - SERVICE COOLING WATER HEAT EXCHANGER CONDENSATE COOLER WILL REMAIN AS PART OF A ONCE THROUGH SALT WATER COOLING SYSTEM. NEW SALT WATER COOLING PUMPS WILL BE PROVIDED IN THE EXISTING INTAKE AND SUPPLY PIPING WILL BE FURNISHED. ROUTING FOR THE SYSTEM RETURN IS THROUGH THE EXISTING CIRCULATING WATER RETURN PIPING TO THE PLANT OUTFALL.
 - ALL DETAILS (INSTRUMENTATION, VENTS, AND DRAINS) OF EXISTING PORTIONS OF THE SYSTEM ARE NOT SHOWN ON THIS DRAWING.
 - NOT USED
 - COOLING TOWER INSTRUMENTATION AND CONTROL DEVICES WILL BE PROVIDED BY THE COOLING TOWER SUPPLIER AND ARE NOT SHOWN ON THIS DRAWING.
 - BEARING AND MOTOR COOLING WILL BE PROVIDED BY THE PUMP SUPPLIER. PUMP TROUBLE WILL BE ANNUNCIATED IN THE MAIN CONTROL ROOM.
 - EACH 14" x 14" CONCRETE DUCT FROM THE UNIT 2 CONDENSER SHELLS ARE ROUTED DIRECTLY TO THE UNIT 2 - 156" x 156" CONCRETE DUCT CIRCULATING WATER PUMP SUCTION HEADER (THE 192" x 192" CONCRETE DUCT AND THE WL-FSJ4-144" SUCTION PIPE DO NOT EXIST ON UNIT 2).
 - TWO MAKEUP CONNECTIONS ARE PROVIDED AT EACH TOWER (TOWER SPRAY WASH MAKEUP). MAKEUP VALVES AND LEVEL INSTRUMENTS ARE INCLUDED IN TOWER SUPPLIER SCOPE AND ARE NOT SHOWN.



FOR INFORMATION ONLY. DO NOT USE FOR PROCUREMENT, FABRICATION, OR CONSTRUCTION.

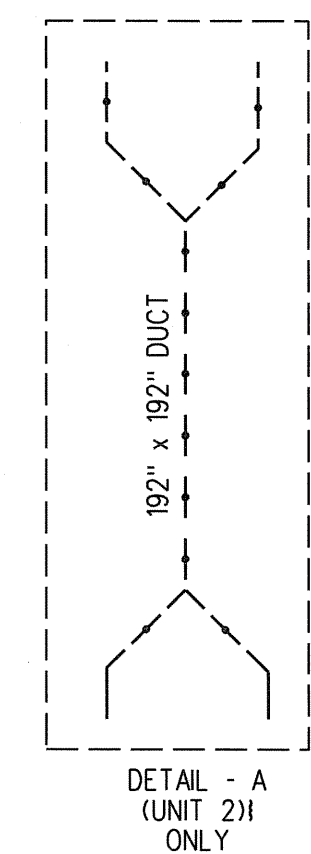
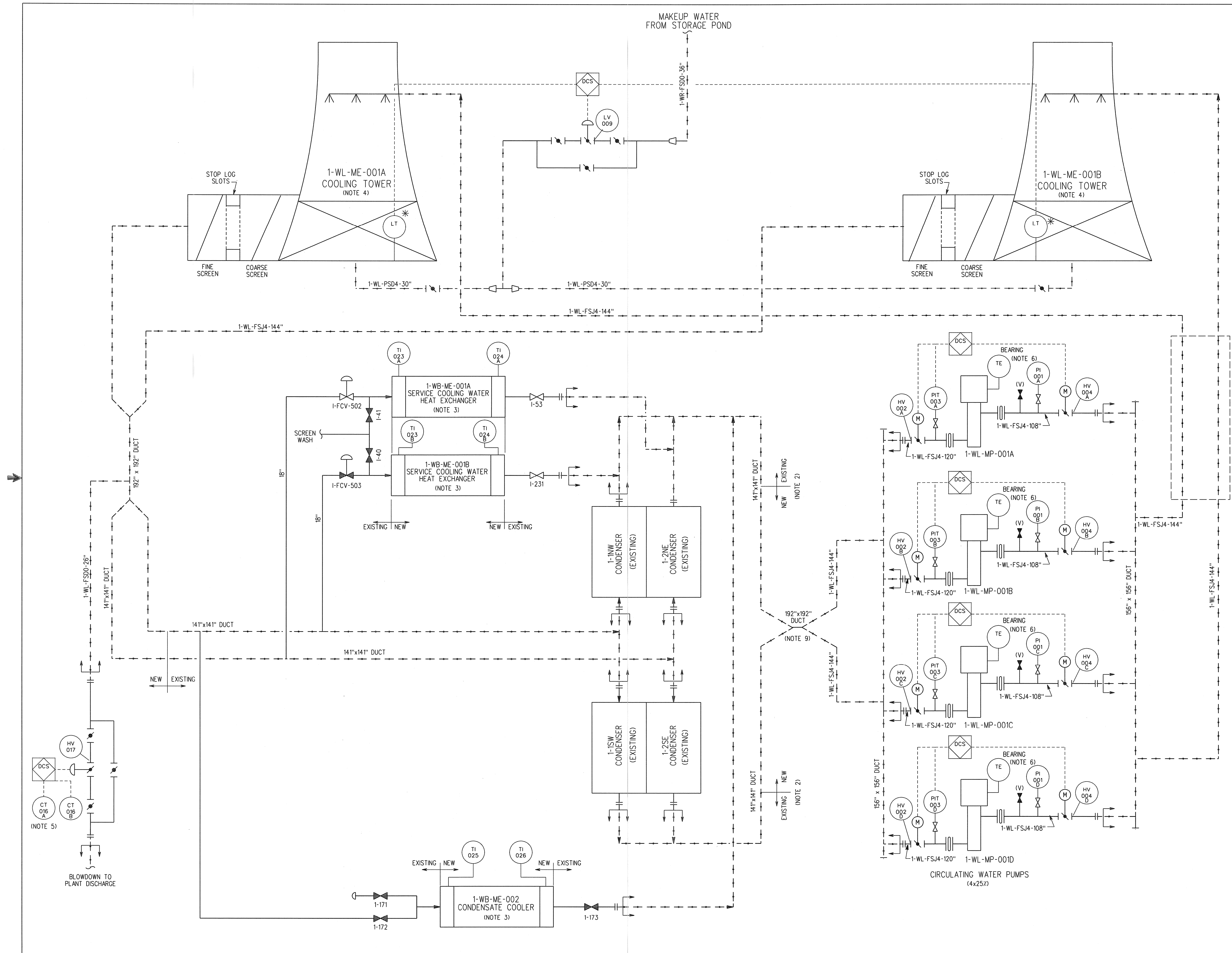
PRELIMINARY P&IDs ARE ISSUED FOR PROPOSAL INFORMATION. BECTEL RESERVES THE RIGHT TO MAKE REVISIONS DURING FINAL DESIGN.

REVISIONS							
NO.	DATE	REVISIONS	BY	CHK	APP	CS	PROJ
1		ISSUED FOR ESTIMATE	RP	PKD	AP		
2		ISSUED FOR REVIEW	EMH	RKT	RP	AKK	DED

SCALE	DESIGNED	DRAWN	CHIEF ENGR

BECTEL DEDICATED TO SAFETY EXCELLENCE - ZERO ACCIDENTS FREDERICK, MARYLAND		
PACIFIC GAS & ELECTRIC DIABLO CANYON		
PIPING & INSTRUMENT SCHEMATIC CIRCULATING WATER SYSTEM MECHANICAL DRAFT COOLING (DRY)		
JOB NO.	DRAWING NO.	REV
25762-110	M6K-WL-00002	B

- NOTES:
- P&ID SHOWS UNIT 1 SYSTEM. UNIT 2 SYSTEM IS IDENTICAL EXCEPT AS NOTED AND EQUIPMENT NUMBERS BEGINNING WITH "2".
 - PLANT DISCHARGE DUCT MODIFIED WHERE THE CONDENSER RETURNS FROM EACH UNIT JOIN THE DUCT. THE COMBINED DUCTS ARE JOINED AND SEALED FROM THE PLANT DISCHARGE TO THE OCEAN.
 - SERVICE COOLING WATER HEAT EXCHANGERS AND CONDENSATE COOLER HAVE BEEN REPLACED.
 - COOLING TOWER INSTRUMENTATION AND CONTROL DEVICES WILL BE PROVIDED BY COOLING TOWER PACKAGE VENDOR.
 - CONDUCTIVITY IS MEASURED AT OUTLET OF COOLING TOWER.
 - BEARING AND MOTOR COOLING WILL BE PROVIDED BY THE PUMP SUPPLIER. TROUBLE COOLING ANNUNCIATED IN THE MAIN CONTROL ROOM.
 - NOT USED.
 - EXISTING INSTRUMENTATION, VENTS, DRAINS, ETC. ARE NOT DEPICTED ON P&ID.
 - EACH 141" x 141" CONCRETE DUCT FROM THE UNIT 2 CONDENSER SHELLS ARE ROUTED DIRECTLY TO THE UNIT 2 156" x 156" CONCRETE DUCT CIRCULATING WATER PUMP SUCTION HEADER (THE 192" x 192" CONCRETE DUCT AND WL-FSJ4-144" SUCTION PIPE DO NOT EXIST ON UNIT 2).



FOR INFORMATION ONLY. DO NOT USE FOR PROCUREMENT, FABRICATION, OR CONSTRUCTION.

PRELIMINARY P&IDs ARE ISSUED FOR PROPOSAL INFORMATION. BECHTEL RESERVES THE RIGHT TO MAKE REVISIONS DURING FINAL DESIGN.

BECHTEL CONFIDENTIAL. © 2013 BECHTEL POWER CORPORATION (BECHTEL). CONTAINS INFORMATION CONFIDENTIAL AND/OR PROPRIETARY TO BECHTEL AND ITS AFFILIATED COMPANIES THAT IS NOT TO BE USED, DISCLOSED, OR REPRODUCED IN ANY FORM BY ANY NON-BECHTEL PARTY WITHOUT BECHTEL'S PRIOR WRITTEN PERMISSION. ALL RIGHTS RESERVED.

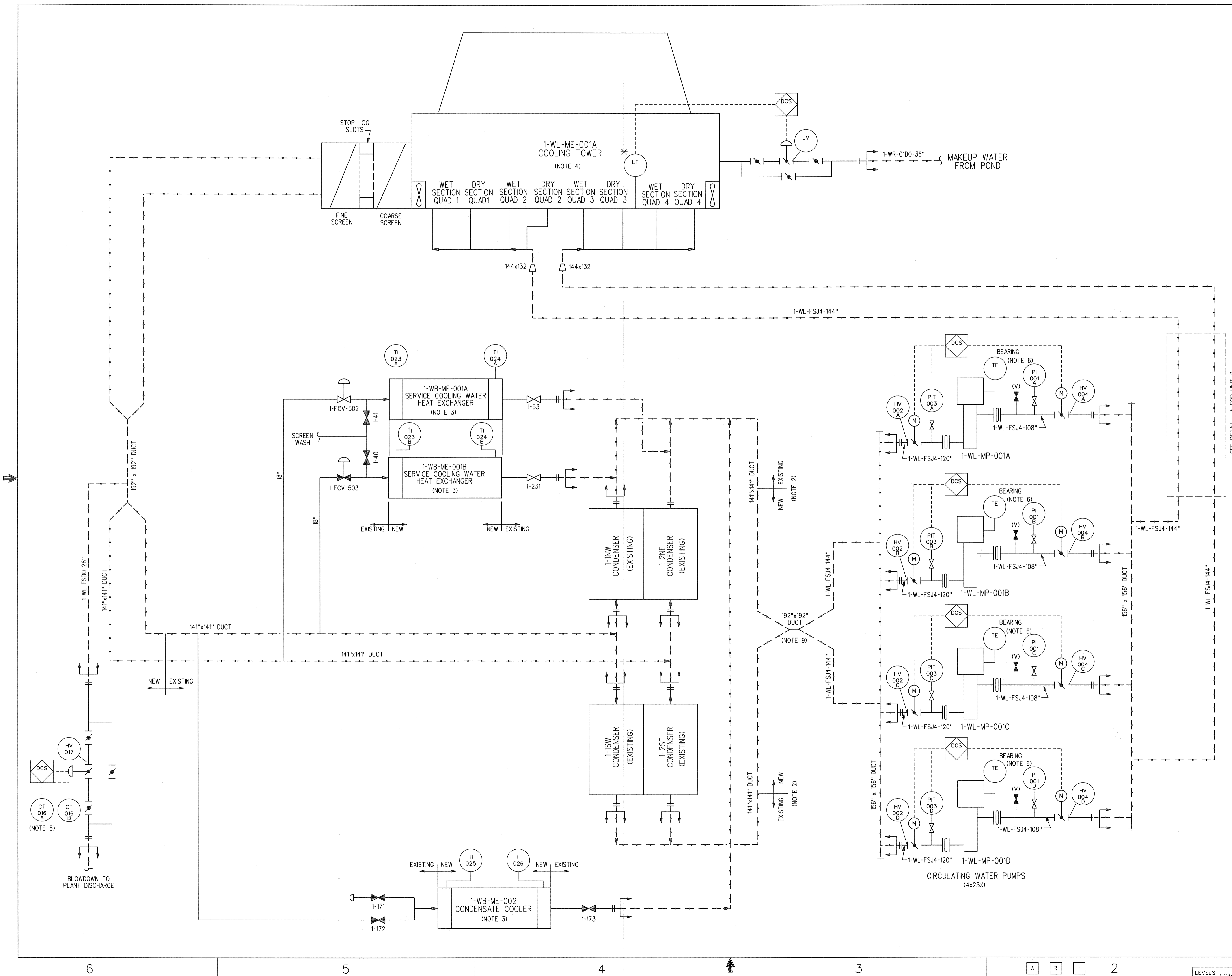
NO.	DATE	REVISIONS	BY	CHK	MECH SUPV	CS SUPV	PD SUPV	PROJ ENGR
		ISSUED FOR ESTIMATE	RP	P&ID	RP	AKK		DED
		ISSUED FOR REVIEW	EMH	RKT	RP	AKK		DED
SCALE	DESIGNED	DRAWN	CHEF	ENGR				

BECHTEL
DEDICATED TO SAFETY EXCELLENCE - ZERO ACCIDENTS
FREDERICK, MARYLAND

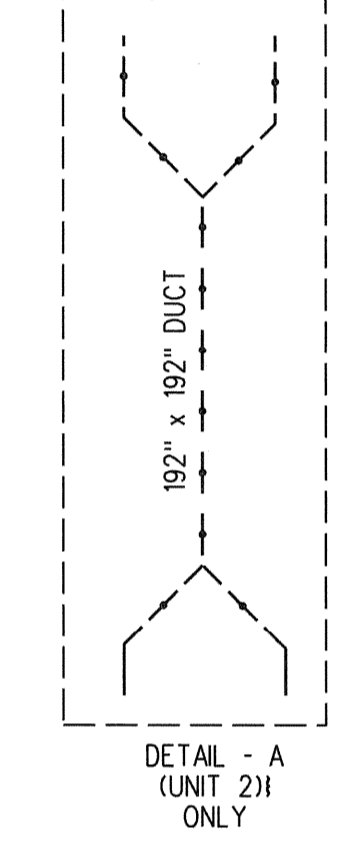
PACIFIC GAS & ELECTRIC
DIABLO CANYON

PIPING & INSTRUMENT SCHEMATIC
CIRCULATING WATER SYSTEM
NATURAL DRAFT COOLING (WET)

JOB NO.	DRAWING NO.	REV
25762-110	M6K-WL-00003	B



- NOTES:
- P&ID SHOWS UNIT 1 SYSTEM. UNIT 2 SYSTEM IS IDENTICAL EXCEPT AS NOTED AND EQUIPMENT NUMBERS BEGINNING WITH "2".
 - PLANT DISCHARGE DUCT MODIFIED WHERE THE CONDENSER RETURNS FROM EACH UNIT JOIN THE DUCT. THE COMBINED DUCTS ARE JOINED AND SEALED FROM THE PLANT DISCHARGE TO THE OCEAN.
 - SERVICE COOLING WATER HEAT EXCHANGERS AND CONDENSATE COOLER HAVE BEEN REPLACED.
 - COOLING TOWER INSTRUMENTATION AND CONTROL DEVICES WILL BE PROVIDED BY COOLING TOWER PACKAGE VENDOR.
 - CONDUCTIVITY IS MEASURED AT OUTLET OF COOLING TOWER.
 - BEARING AND MOTOR COOLING WILL BE PROVIDED BY THE PUMP SUPPLIER. TROUBLE COOLING ANNUNCIATED IN THE MAIN CONTROL ROOM.
 - NOT USED
 - EXISTING INSTRUMENTATION, VENTS, DRAINS, ETC. ARE NOT DEPICTED ON P&ID.
 - EACH 14" x 14" CONCRETE DUCT FROM THE UNIT 2 CONDENSER SHELLS ARE ROUTED DIRECTLY TO THE UNIT 2 156" x 156" CONCRETE DUCT CIRCULATING WATER PUMP SUCTION HEADER (THE 192" x 192" CONCRETE DUCT AND WL-FS4-144" SUCTION PIPE DO NOT EXIST ON UNIT 2).



FOR INFORMATION ONLY. DO NOT USE FOR PROCUREMENT, FABRICATION, OR CONSTRUCTION.

PRELIMINARY P&IDs ARE ISSUED FOR PROPOSAL INFORMATION. BECHTEL RESERVES THE RIGHT TO MAKE REVISIONS DURING FINAL DESIGN.

BECHTEL CONFIDENTIAL © 2013 BECHTEL POWER CORPORATION (BECHTEL) CONTAINS INFORMATION CONFIDENTIAL AND/OR PROPRIETARY TO BECHTEL AND ITS AFFILIATED COMPANIES THAT IS NOT TO BE USED, DISCLOSED OR REPRODUCED IN ANY FORM BY ANY NON-BECHTEL PARTY WITHOUT BECHTEL'S PRIOR WRITTEN PERMISSION. ALL RIGHTS RESERVED.

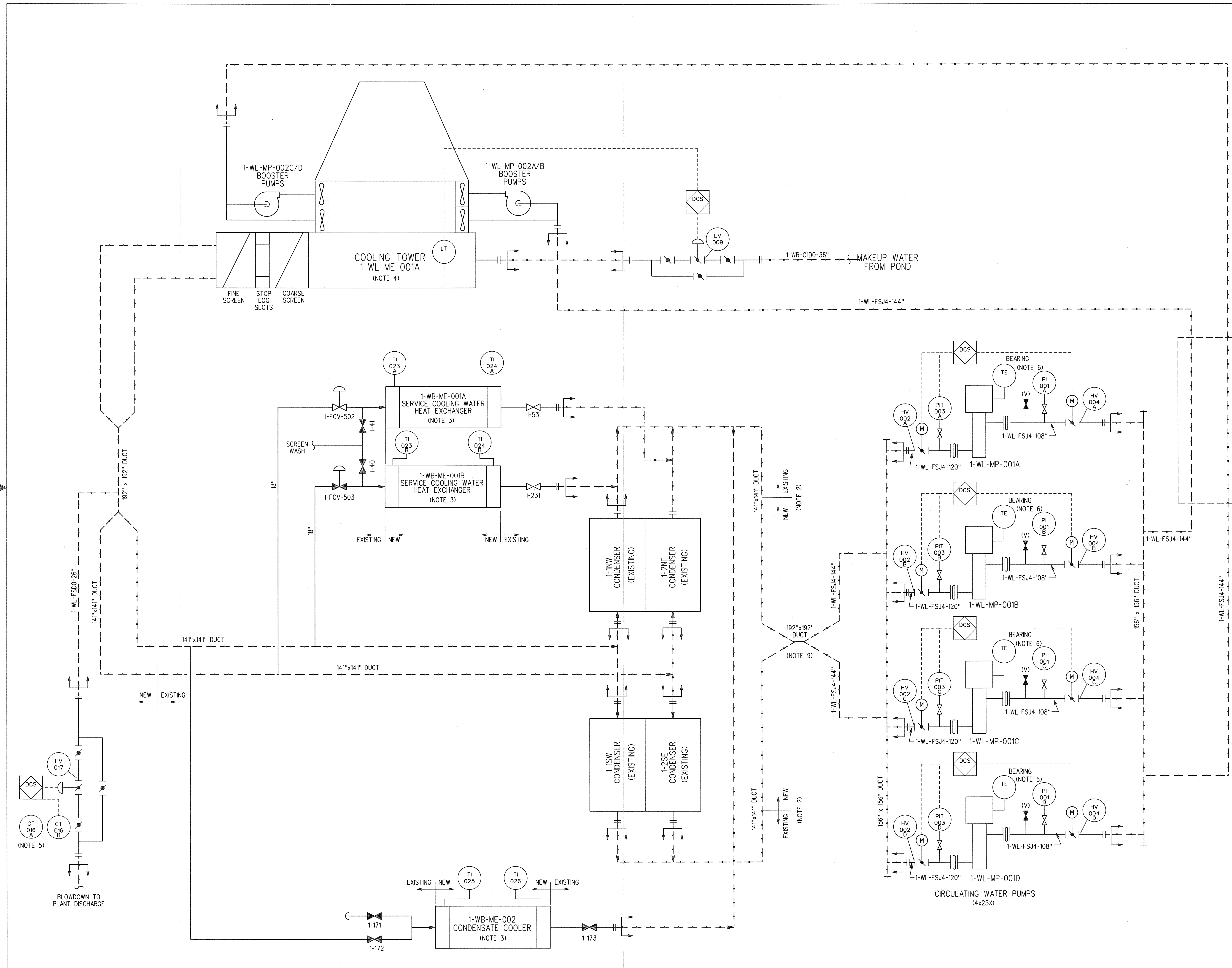
NO.	DATE	REVISIONS	BY	CHK	MECH SUPV	CS SUPV	PD SUPV	PROJ ENGR
SCALE DESIGNED DRAWN CHIEF ENGR								

BECHTEL
 DEDICATED TO SAFETY EXCELLENCE - ZERO ACCIDENTS
 FREDERICK, MARYLAND

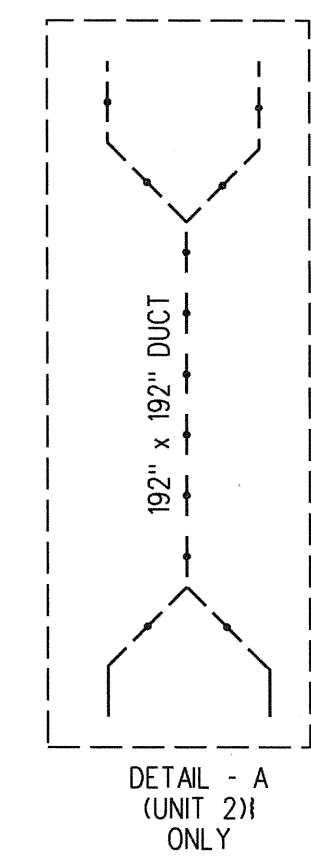
PACIFIC GAS & ELECTRIC
 DIABLO CANYON

PIPING & INSTRUMENT SCHEMATIC
 CIRCULATING WATER SYSTEM
 MECHANICAL DRAFT COOLING (WET)

	JOB NO. 25762-110	DRAWING NO. M6K-WL-00004	REV B
--	----------------------	-----------------------------	----------



- NOTES:
1. P&ID SHOWS UNIT 1 SYSTEM. UNIT 2 SYSTEM IS IDENTICAL EXCEPT AS NOTED AND EQUIPMENT NUMBERS BEGINNING WITH "2".
 2. PLANT DISCHARGE DUCT MODIFIED WHERE THE CONDENSER RETURNS FROM EACH UNIT JOIN THE DUCT. THE COMBINED DUCTS ARE JOINED AND SEALED FROM THE PLANT DISCHARGE TO THE OCEAN.
 3. SERVICE COOLING WATER HEAT EXCHANGERS AND CONDENSATE COOLER HAVE BEEN REPLACED.
 4. COOLING TOWER INSTRUMENTATION AND CONTROL DEVICES WILL BE PROVIDED BY COOLING TOWER PACKAGE VENDOR.
 5. CONDUCTIVITY IS MEASURED AT OUTLET OF COOLING TOWER.
 6. BEARING AND MOTOR COOLING WILL BE PROVIDED BY THE PUMP SUPPLIER. TROUBLE COOLING ANNUNCIATED IN THE MAIN CONTROL ROOM.
 7. NOT USED
 8. EXISTING INSTRUMENTATION, VENTS, DRAINS, ETC. ARE NOT DEPICTED ON P&ID.
 9. EACH 14" x 14" CONCRETE DUCT FROM THE UNIT 2 CONDENSER SHELLS ARE ROUTED DIRECTLY TO THE UNIT 2 156" x 156" CONCRETE DUCT. CIRCULATING WATER PUMP SUCTION HEADER (THE 192" x 192" CONCRETE DUCT AND WL-FSJ4-144" SUCTION PIPE DO NOT EXIST ON UNIT 2).



FOR INFORMATION ONLY. DO NOT USE FOR PROCUREMENT, FABRICATION, OR CONSTRUCTION.

PRELIMINARY P&IDs ARE ISSUED FOR PROPOSAL INFORMATION. BECHTEL RESERVES THE RIGHT TO MAKE REVISIONS DURING FINAL DESIGN.

BECHTEL CONFIDENTIAL © 2013 BECHTEL POWER CORPORATION (BECHTEL) CONTAINS INFORMATION CONFIDENTIAL AND/OR PROPRIETARY TO BECHTEL AND ITS AFFILIATED COMPANIES THAT IS NOT TO BE USED, DISCLOSED OR REPRODUCED IN ANY FORM BY ANY NON-BECHTEL PARTY WITHOUT BECHTEL'S PRIOR WRITTEN PERMISSION. ALL RIGHTS RESERVED.

ISSUED FOR ESTIMATE	RP	P&ID	RP	AW	AW			
ISSUED FOR PRELIMINARY REVIEW	EMH	RKT	RP	AKK	DED			
NO.	DATE	REVISIONS	BY	CHK	MECH SUPLY	CS SUPLY	PD SUPLY	PROJ ENGR
SCALE	DESIGNED	DRAWN	CHIEF ENGR					

BECHTEL
 DEDICATED TO SAFETY EXCELLENCE - ZERO ACCIDENTS
 FREDERICK, MARYLAND

PACIFIC GAS & ELECTRIC
DIABLO CANYON

PIPING & INSTRUMENT SCHEMATIC
CIRCULATING WATER SYSTEM
HYBRID COOLING OPTION

JOB NO.	DRAWING NO.	REV
25762-110	M6K-WL-00005	B

LEVELS 1 2345678901