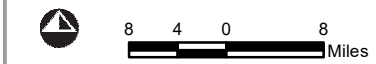
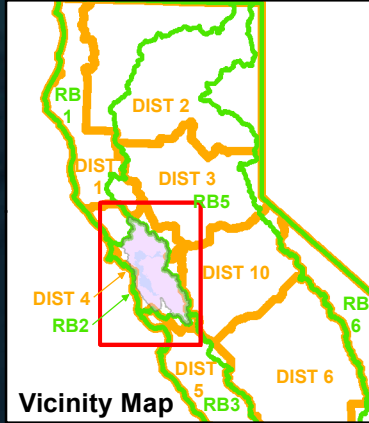
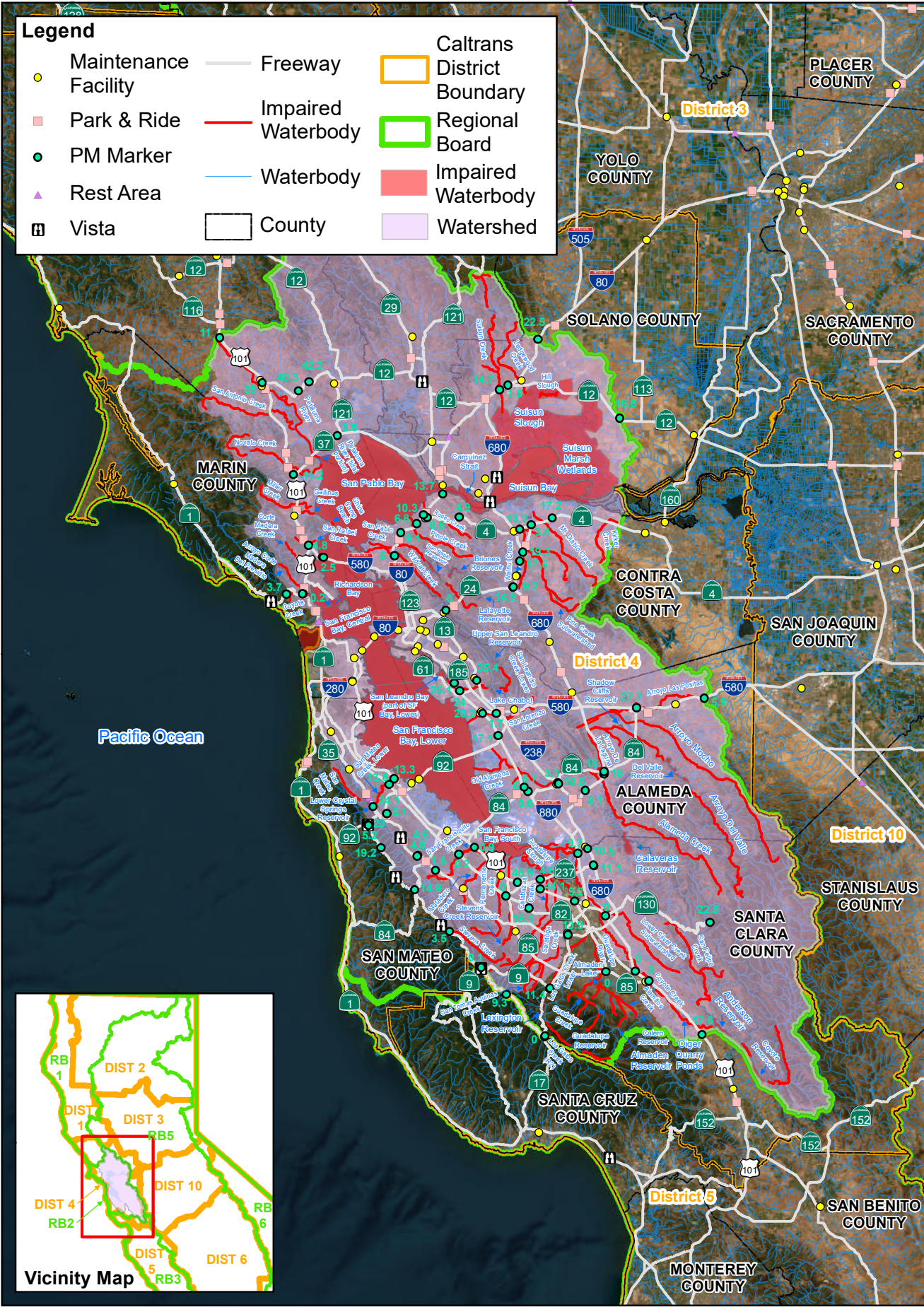


**Legend**

- |                        |                      |                            |
|------------------------|----------------------|----------------------------|
| ● Maintenance Facility | — Freeway            | Caltrans District Boundary |
| ■ Park & Ride          | — Impaired Waterbody | Regional Board             |
| ● PM Marker            | — Waterbody          | Impaired Waterbody         |
| ▲ Rest Area            | □ County             | Watershed                  |
| ⊠ Vista                |                      |                            |

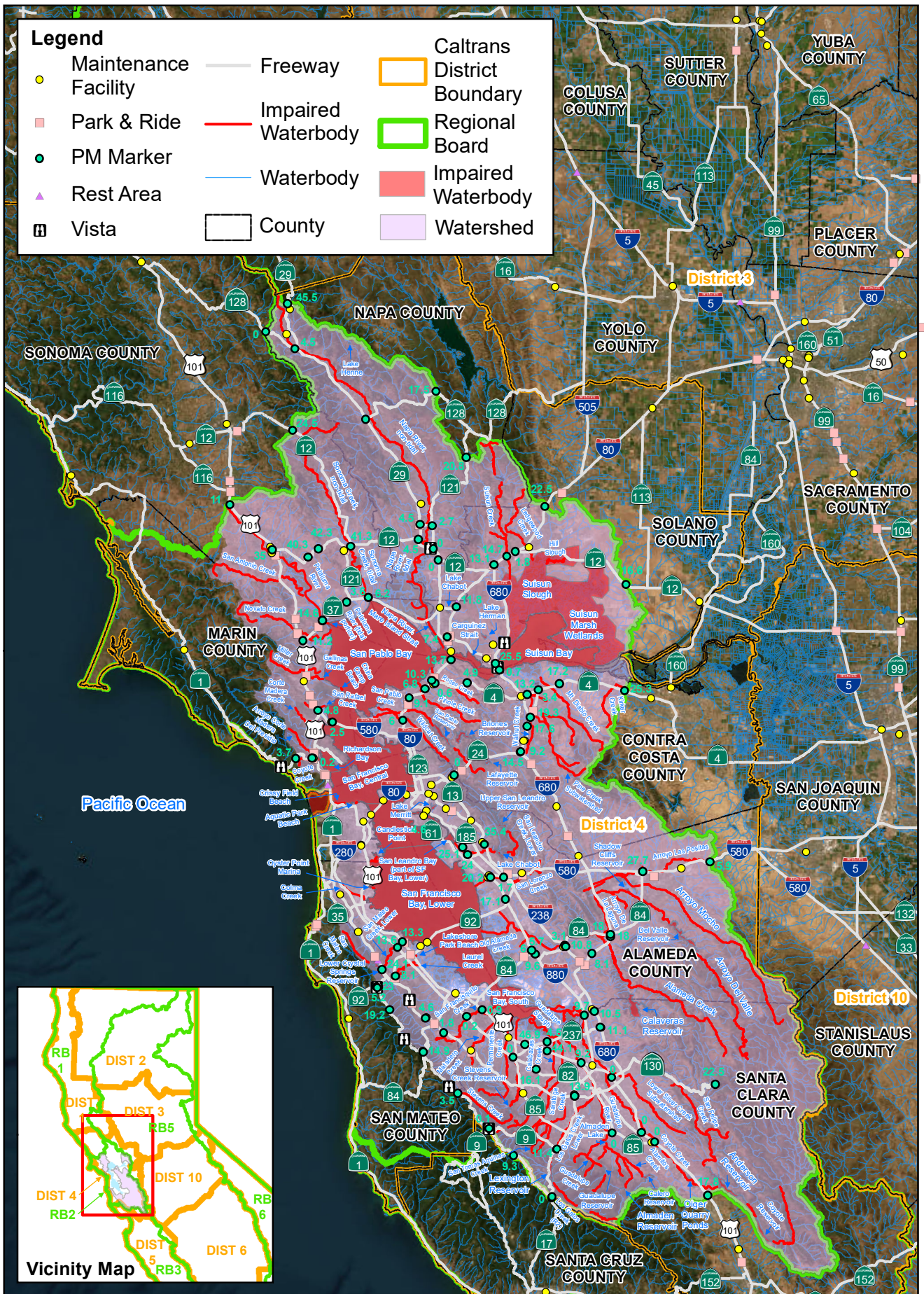


# San Francisco Bay Watershed

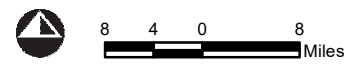
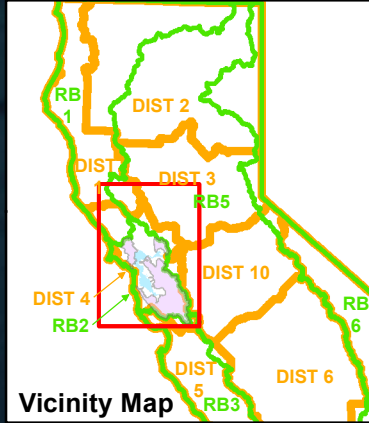
Source: ESRI World Aerial, Caltrans, SWRCB, RWQCB, and California Department of Water Resources.

Mercury TMDL





Legend		
<span style="color: yellow;">●</span> Maintenance Facility	Freeway	Caltrans District Boundary
<span style="color: pink;">■</span> Park & Ride	Impaired Waterbody	Regional Board
<span style="color: green;">●</span> PM Marker	Waterbody	Impaired Waterbody
<span style="color: purple;">▲</span> Rest Area	County	Watershed
Vista		

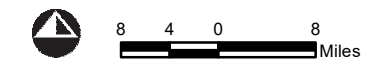
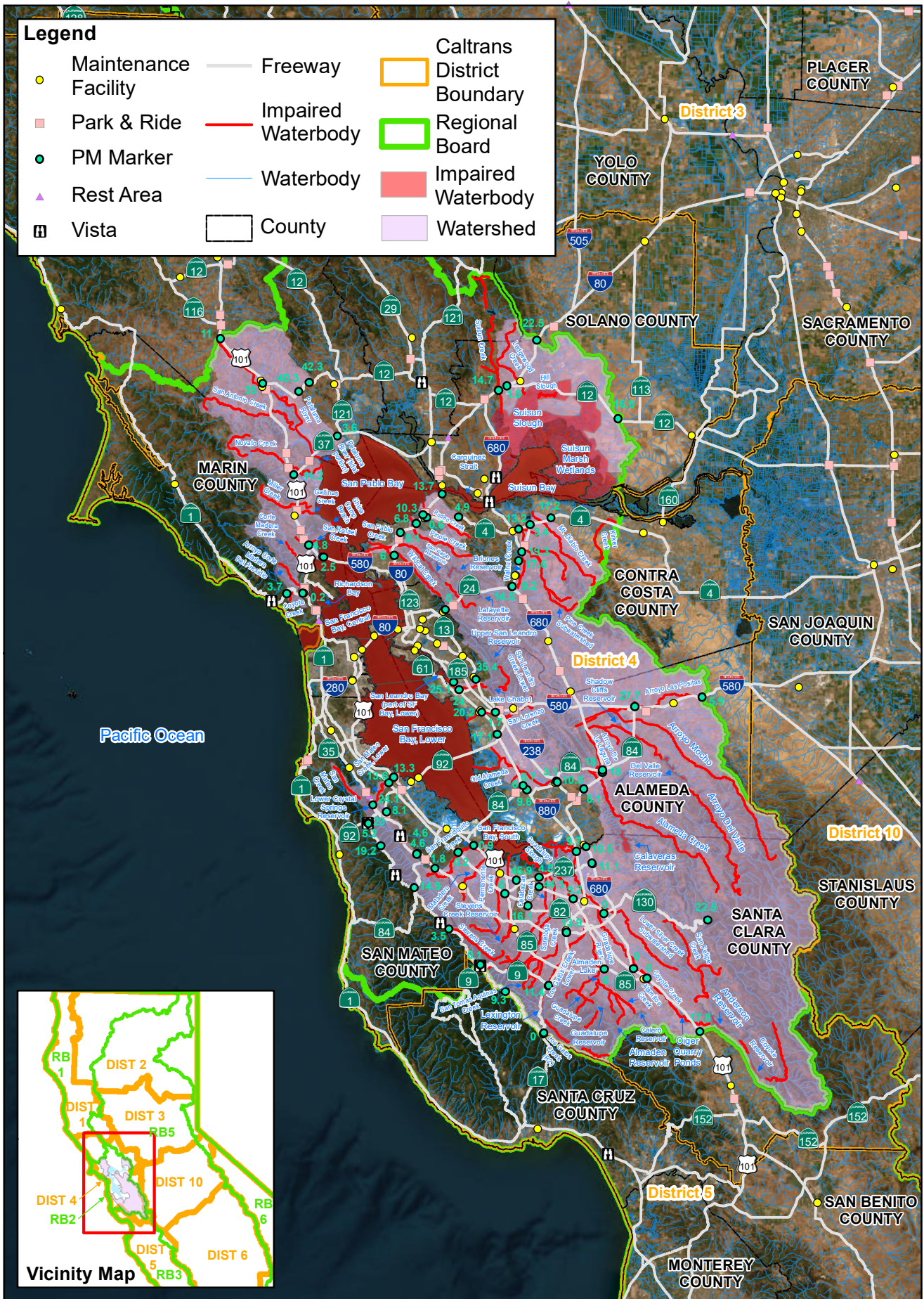


# San Francisco Bay Watershed

Source: ESRI World Aerial, Caltrans, SWRCB, RWQCB, and California Department of Water Resources.

PCBs TMDL



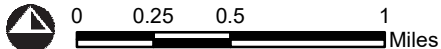
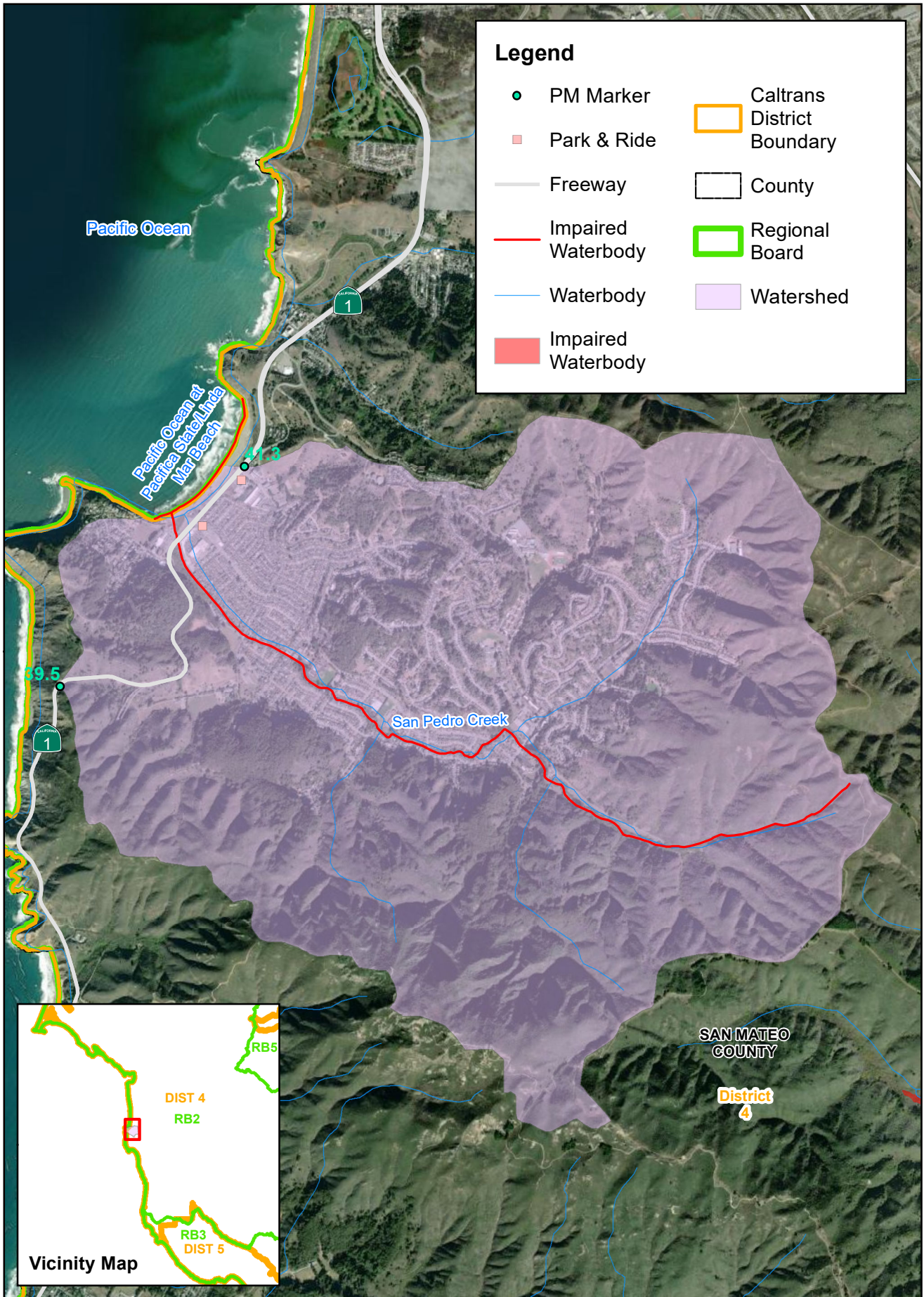


Source: ESRI World Aerial, Caltrans, SWRCB, RWQCB, and California Department of Water Resources.

# San Francisco Bay and Urban Creeks Watershed

Diazinon and Pesticide-Related Toxicity TMDL



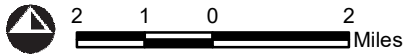
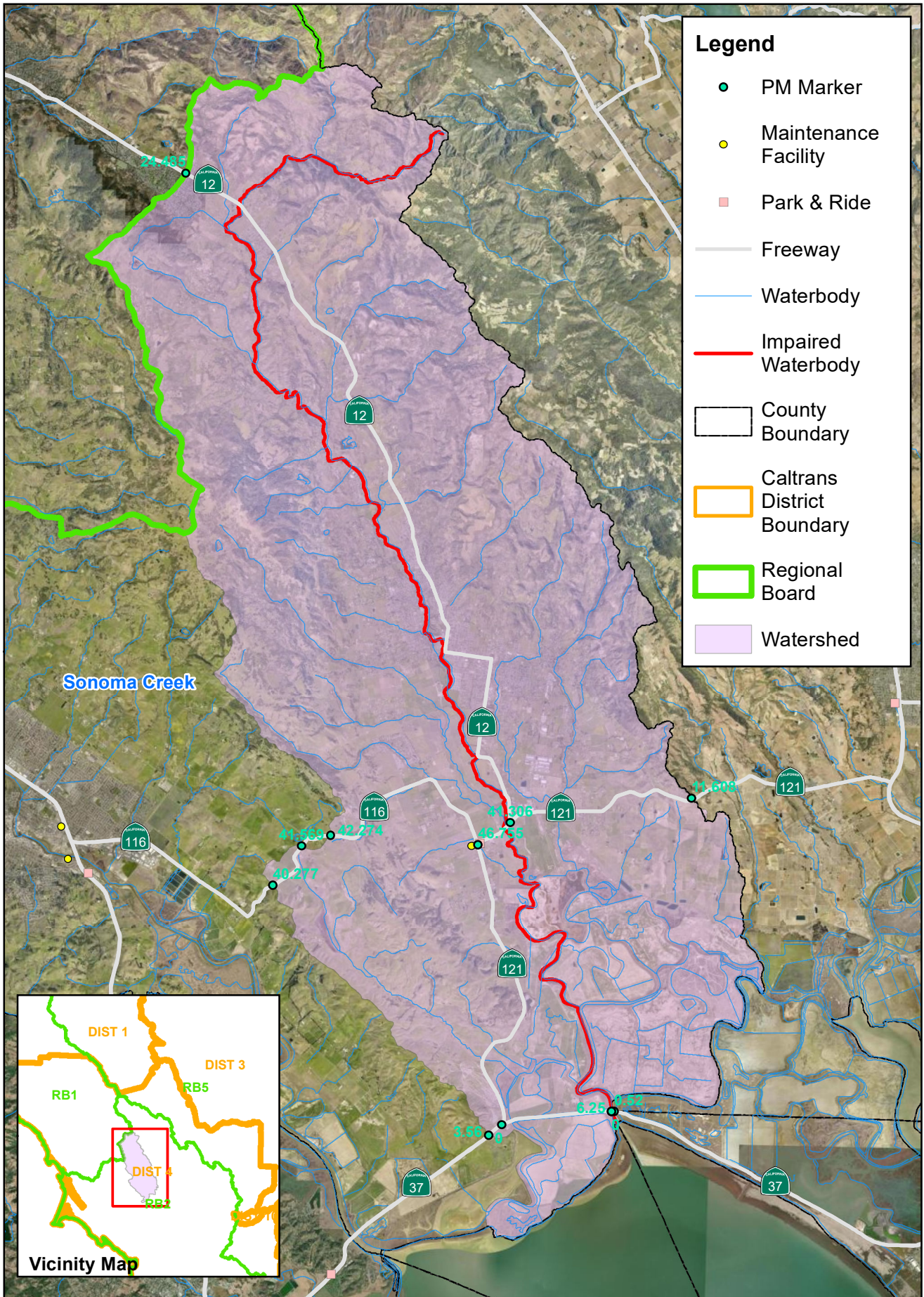


Source: ESRI World Aerial, Caltrans, SWRCB, RWQCB, and California Department of Water Resources.

# San Pedro at Pacifica State Beach Watershed

Bacteria TMDL

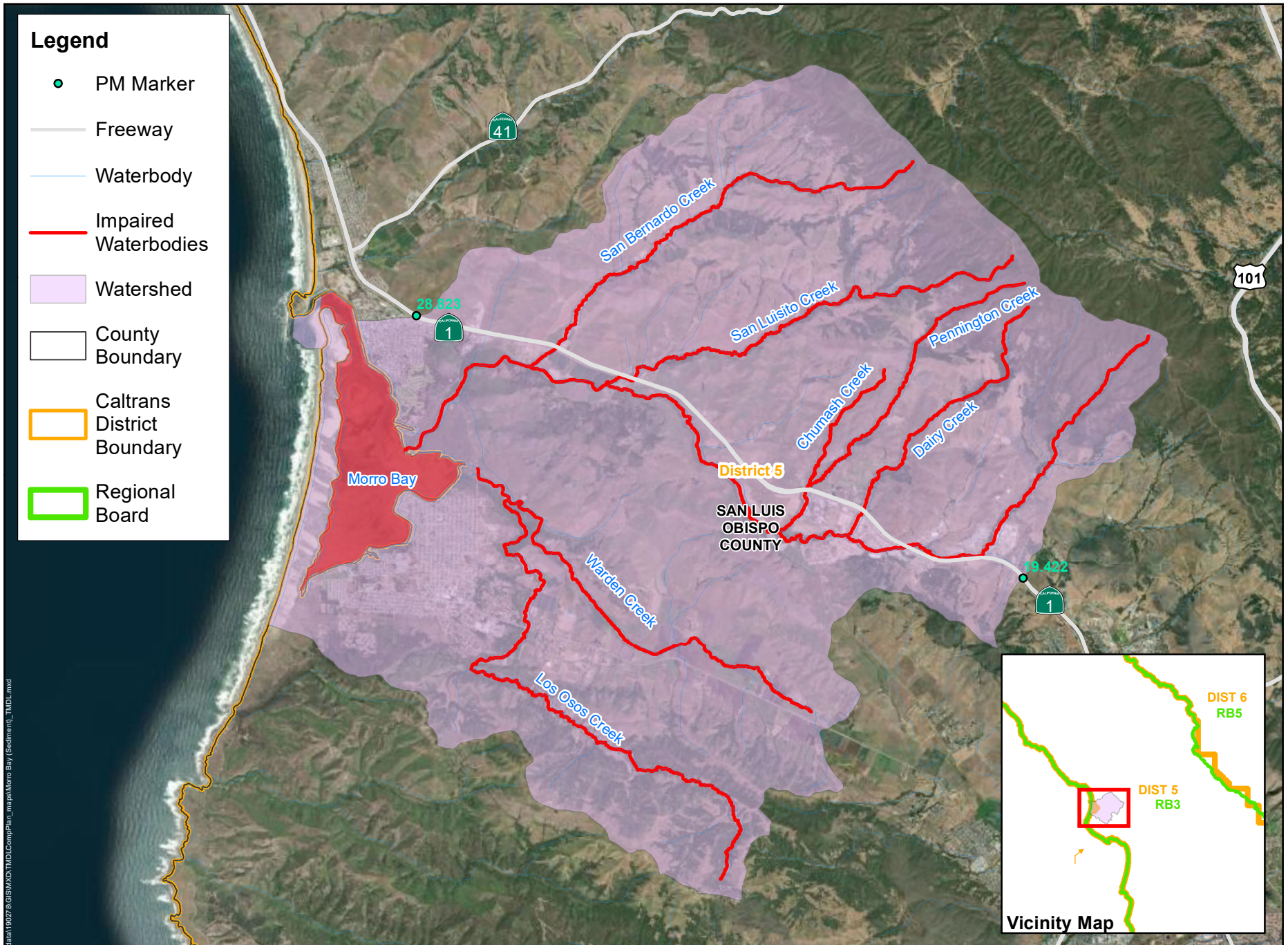




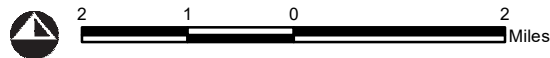
# Sonoma Creek Watershed

Sediment TMDL





data\19027 & GIS\MXD\TMDLCompPlan\_mapa\Morro Bay (Sediment)\_TMDL.mxd

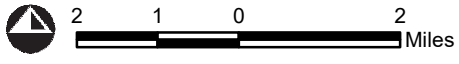
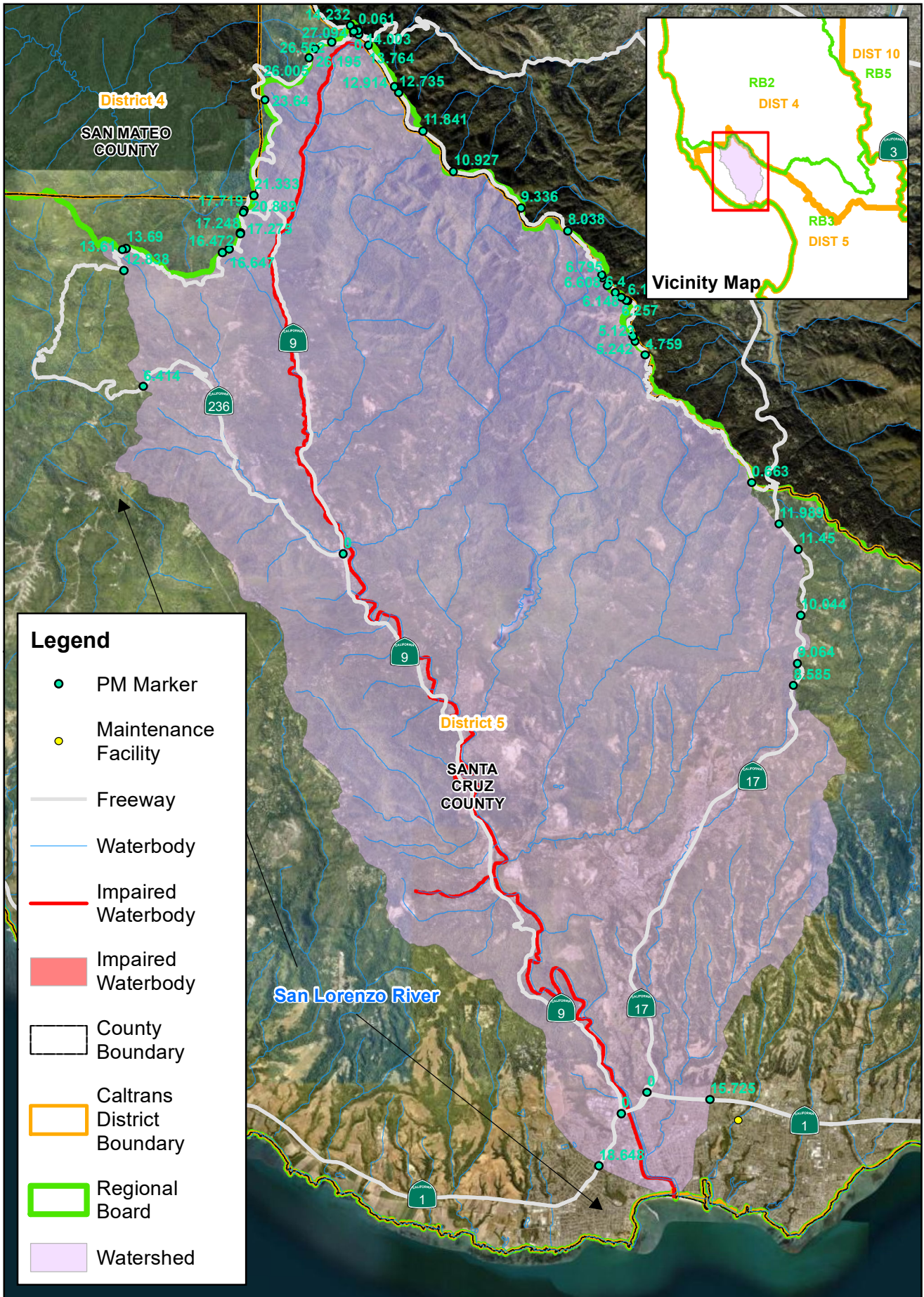


## Morro Bay (includes Chorro Creek, Los Osos Creek, and the Morro Bay Estuary) Watershed

Source: ESRI World Aerial, Caltrans, SWRCB, RWOCB, and California Department of Water Resources.

Sediment TMDL





Source: ESRI World Aerial, Caltrans, SWRCB, RWQCB, and California Department of Water Resources.

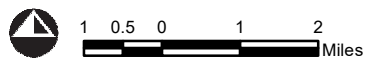
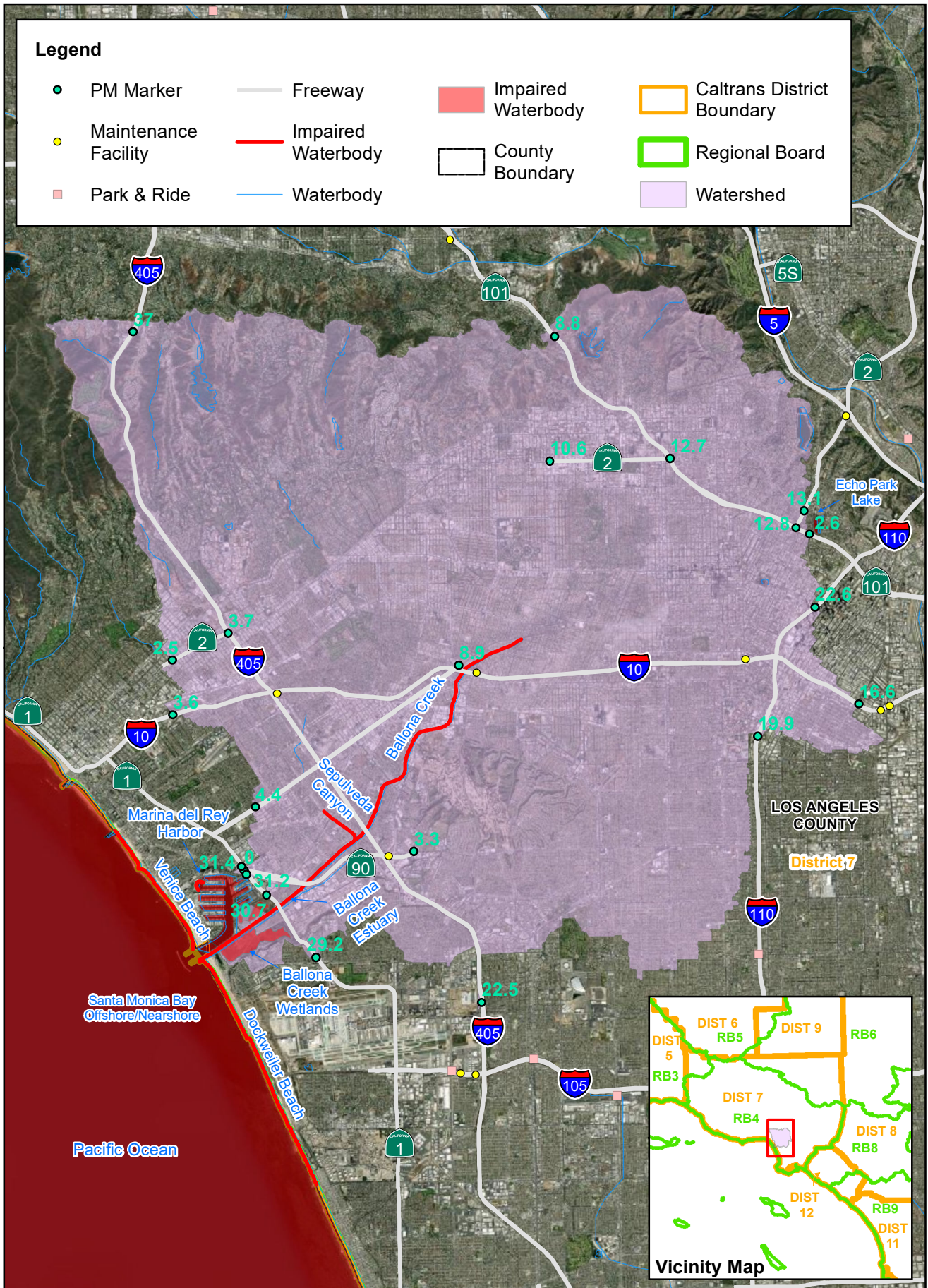
# San Lorenzo River

## Sediment TMDL



**Legend**

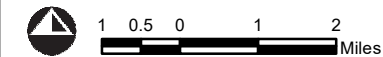
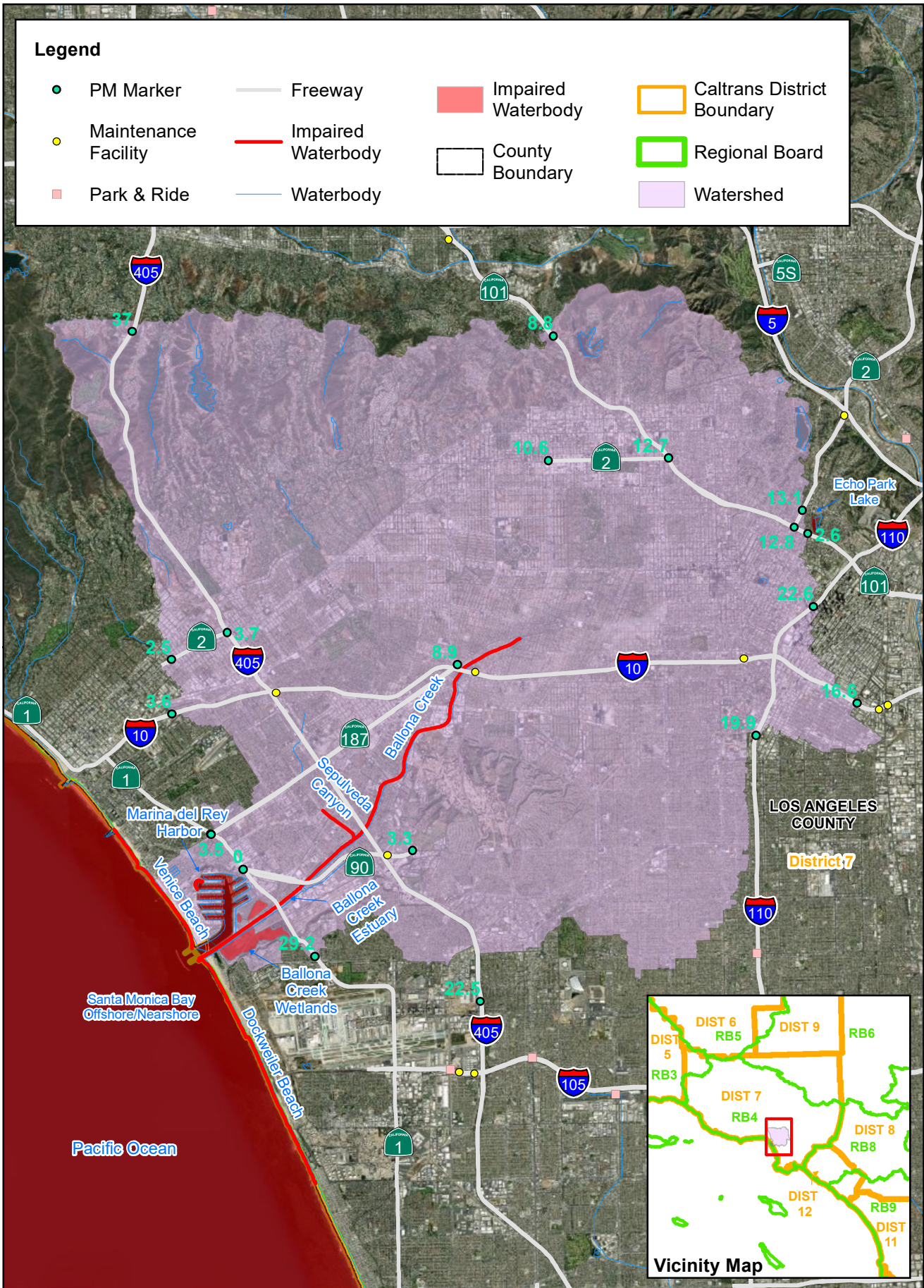
- |                        |                      |                      |                              |
|------------------------|----------------------|----------------------|------------------------------|
| ● PM Marker            | — Freeway            | ■ Impaired Waterbody | □ Caltrans District Boundary |
| ● Maintenance Facility | — Impaired Waterbody | □ County Boundary    | □ Regional Board             |
| ■ Park & Ride          | — Waterbody          | □ Watershed          |                              |



Source: ESRI World Aerial, Caltrans, SWRCB, RWQCB, and California Department of Water Resources.

**Ballona Creek**  
Metals TMDL



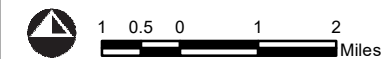
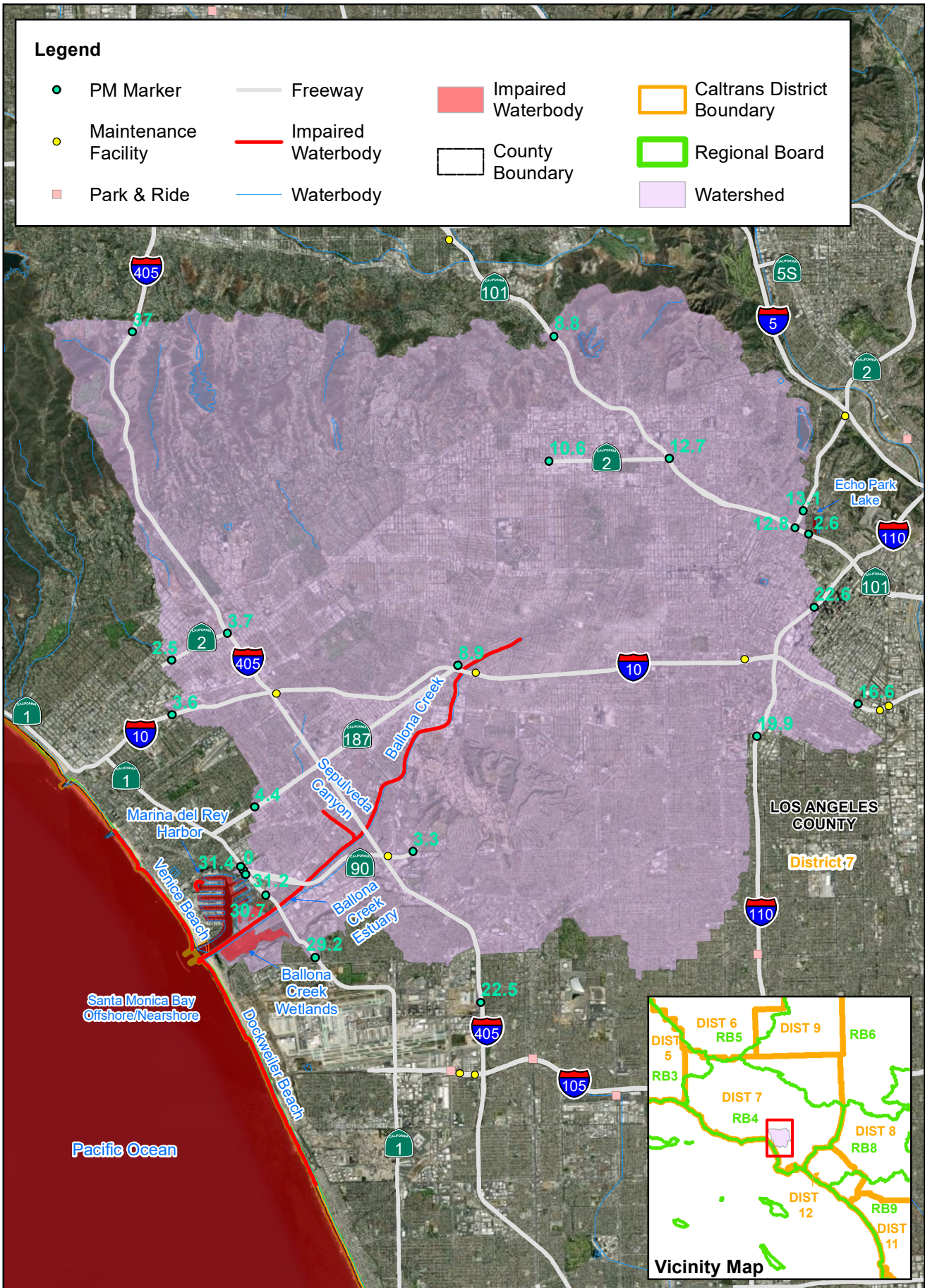


Source: ESRI World Aerial, Caltrans, SWRCB, RWQCB, and California Department of Water Resources.

# Ballona Creek

Trash TMDL



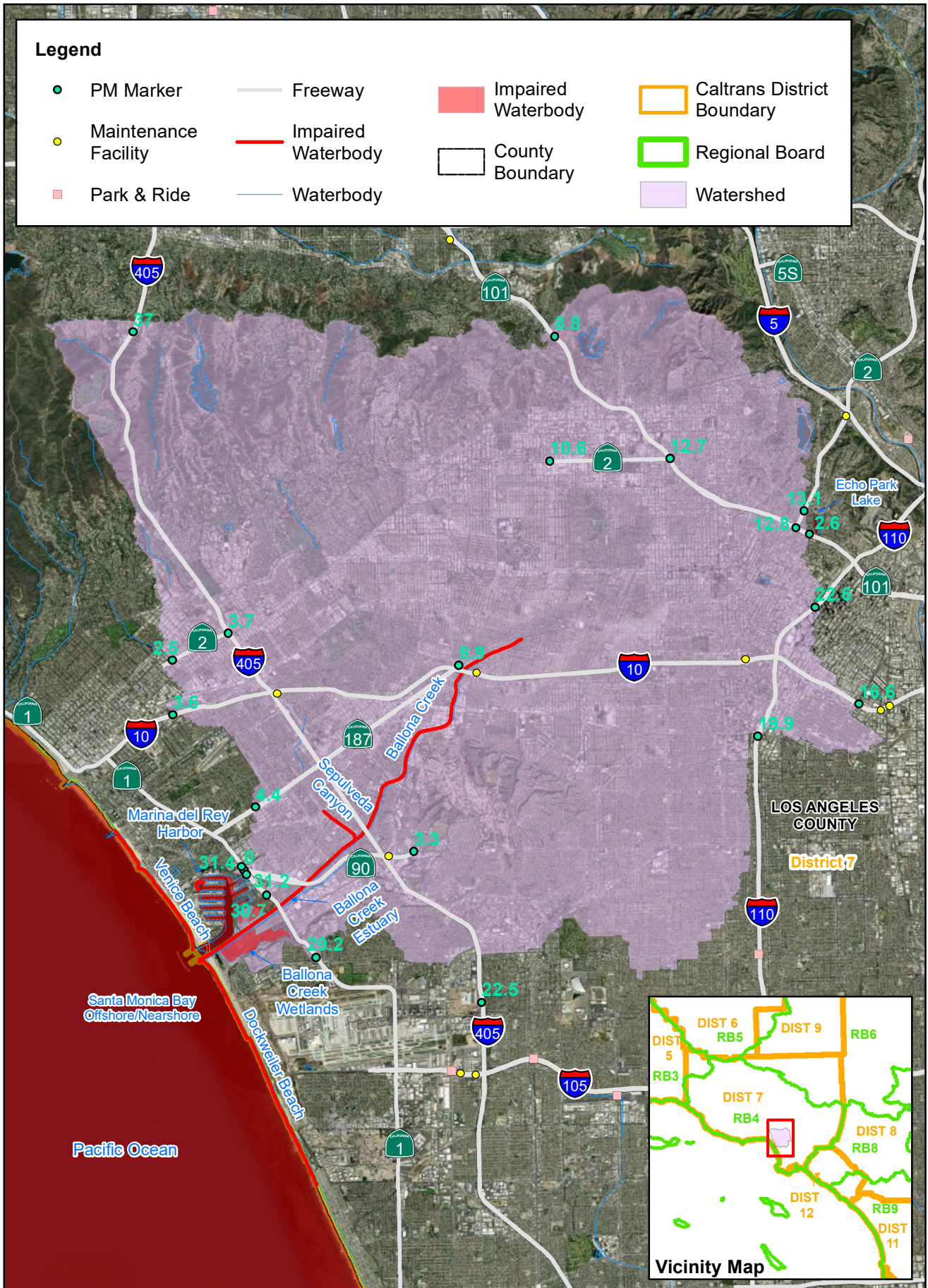


Source: ESRI World Aerial, Caltrans, SWRCB, RWQCB, and California Department of Water Resources.

# Ballona Creek, Ballona Estuary, and Sepulveda Channel

Bacteria TMDL



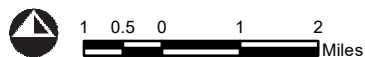
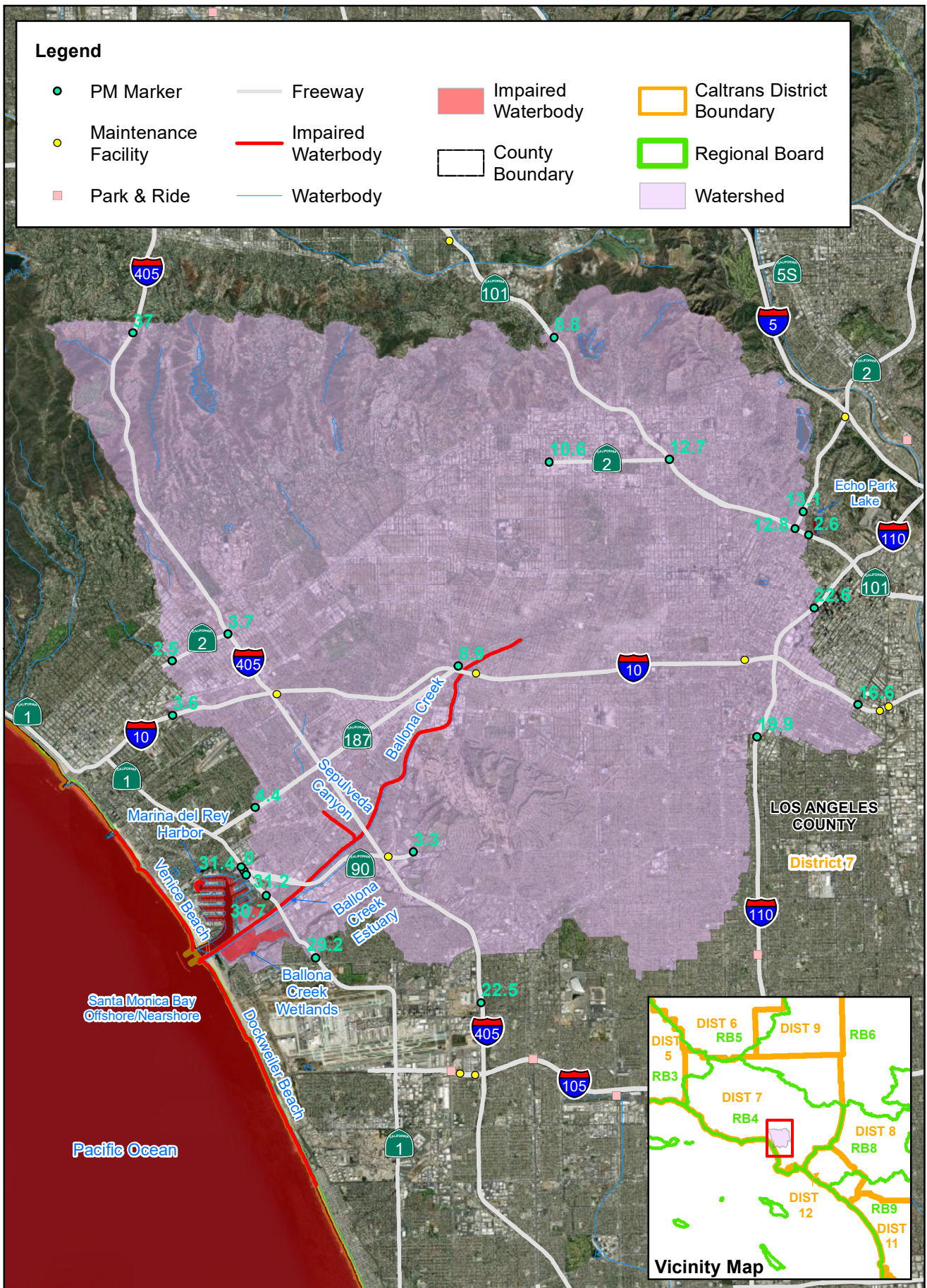


Source: ESRI World Aerial, Caltrans, SWRCB, RWQCB, and California Department of Water Resources.

## Ballona Creek, Ballona Estuary, and Sepulveda Channel

Bacteria TMDL



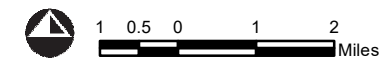
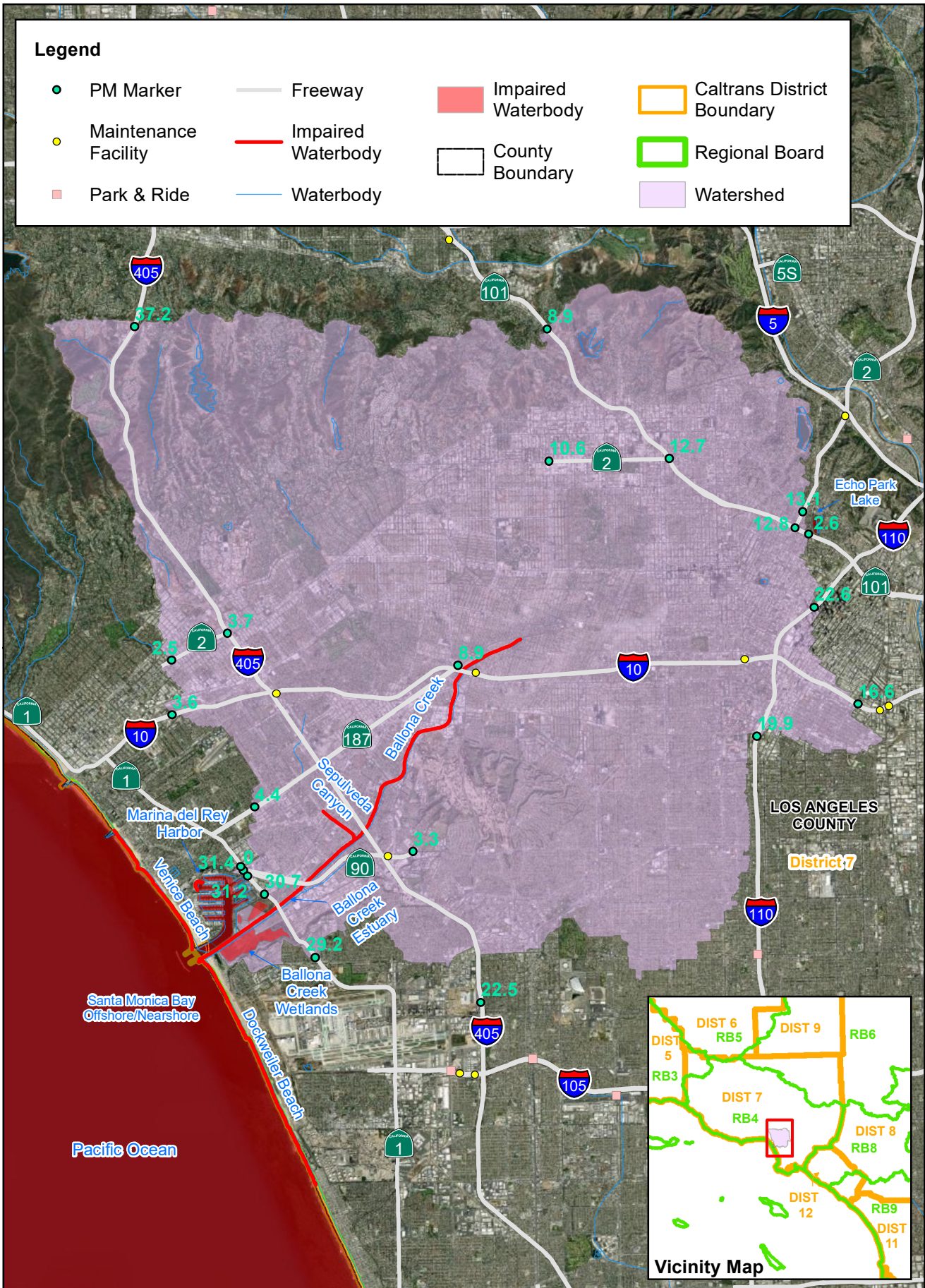


Source: ESRI World Aerial, Caltrans, SWRCB, RWQCB, and California Department of Water Resources.

# Ballona Creek Estuary

Toxic Pollutants TMDL



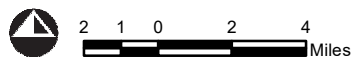
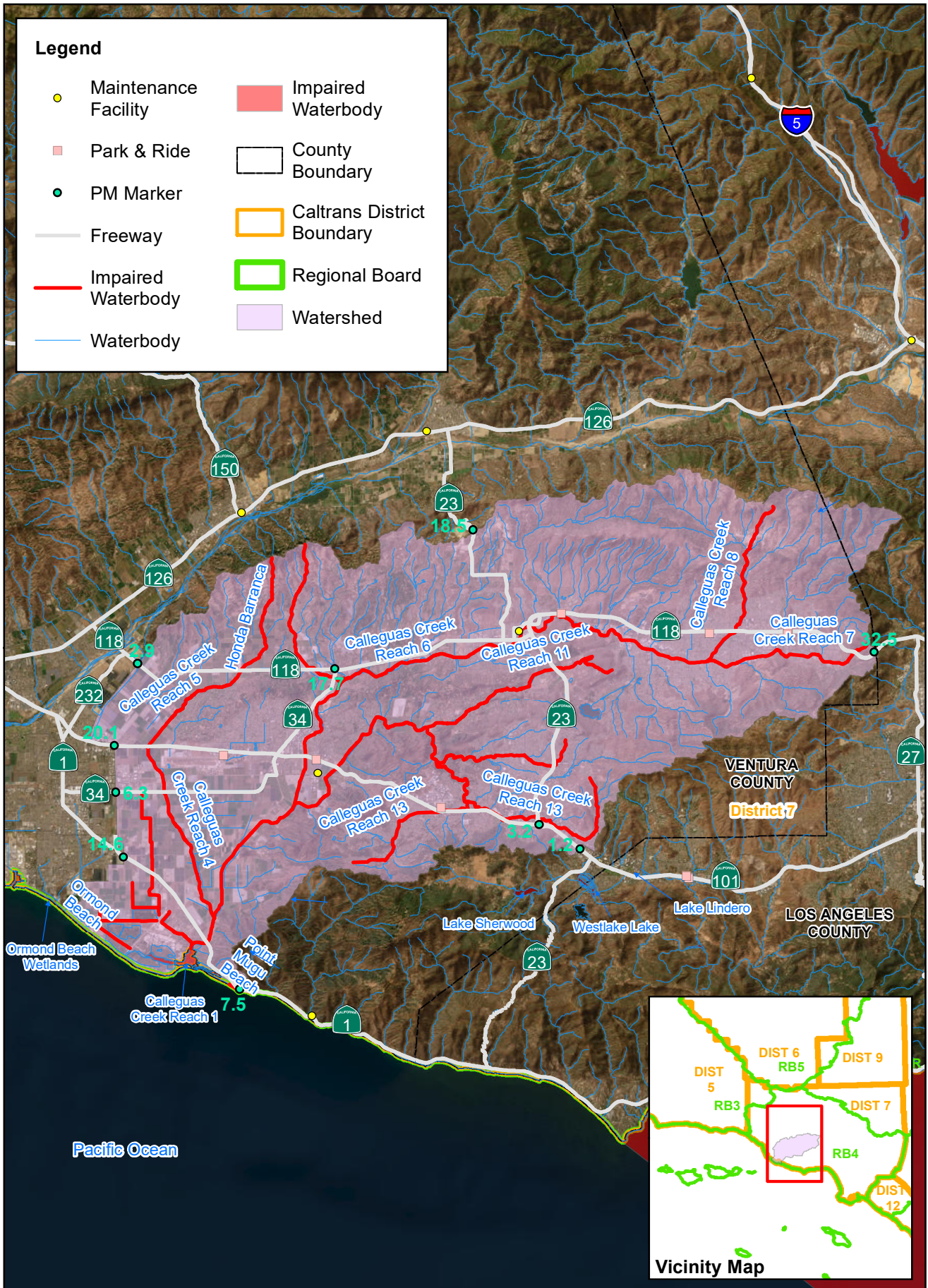


Source: ESRI World Aerial, Caltrans, SWRCB, RWQCB, and California Department of Water Resources.

# Ballona Creek Wetlands

## Sediment and Invasive Exotic Vegetation TMDL



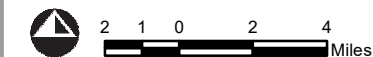
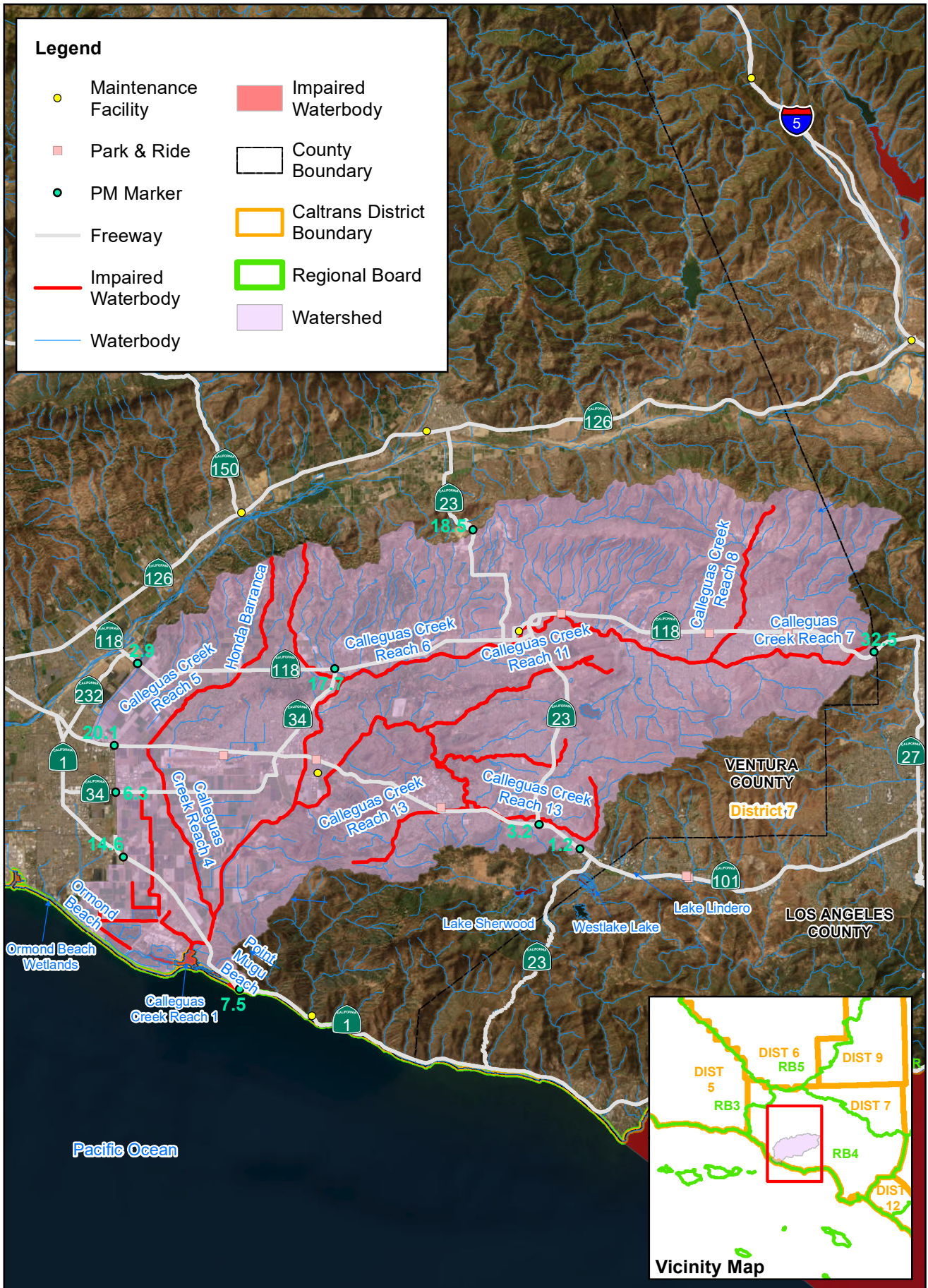


Source: ESRI World Aerial, Caltrans, SWRCB, RWQCB, and California Department of Water Resources.

# Calleguas Creek, its Tributaries, and Mugu Lagoon

Metals and Selenium TMDL



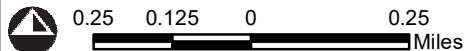
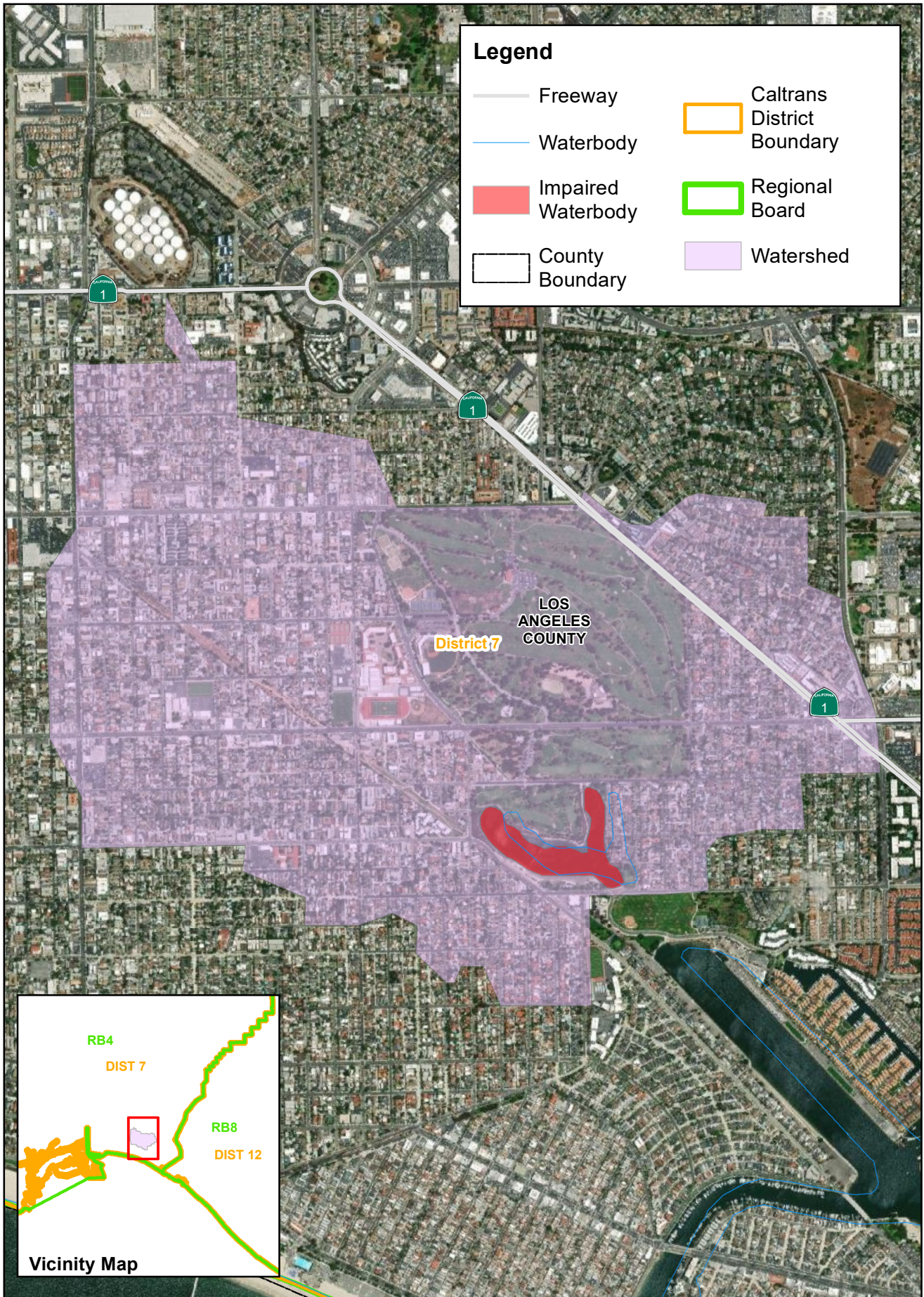


Source: ESRI World Aerial, Caltrans, SWRCB, RWQCB, and California Department of Water Resources.

# Calleguas Creek, its Tributaries, and Mugu Lagoon

Organochlorine Pesticides, PCBs, and Siltation TMDL

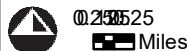
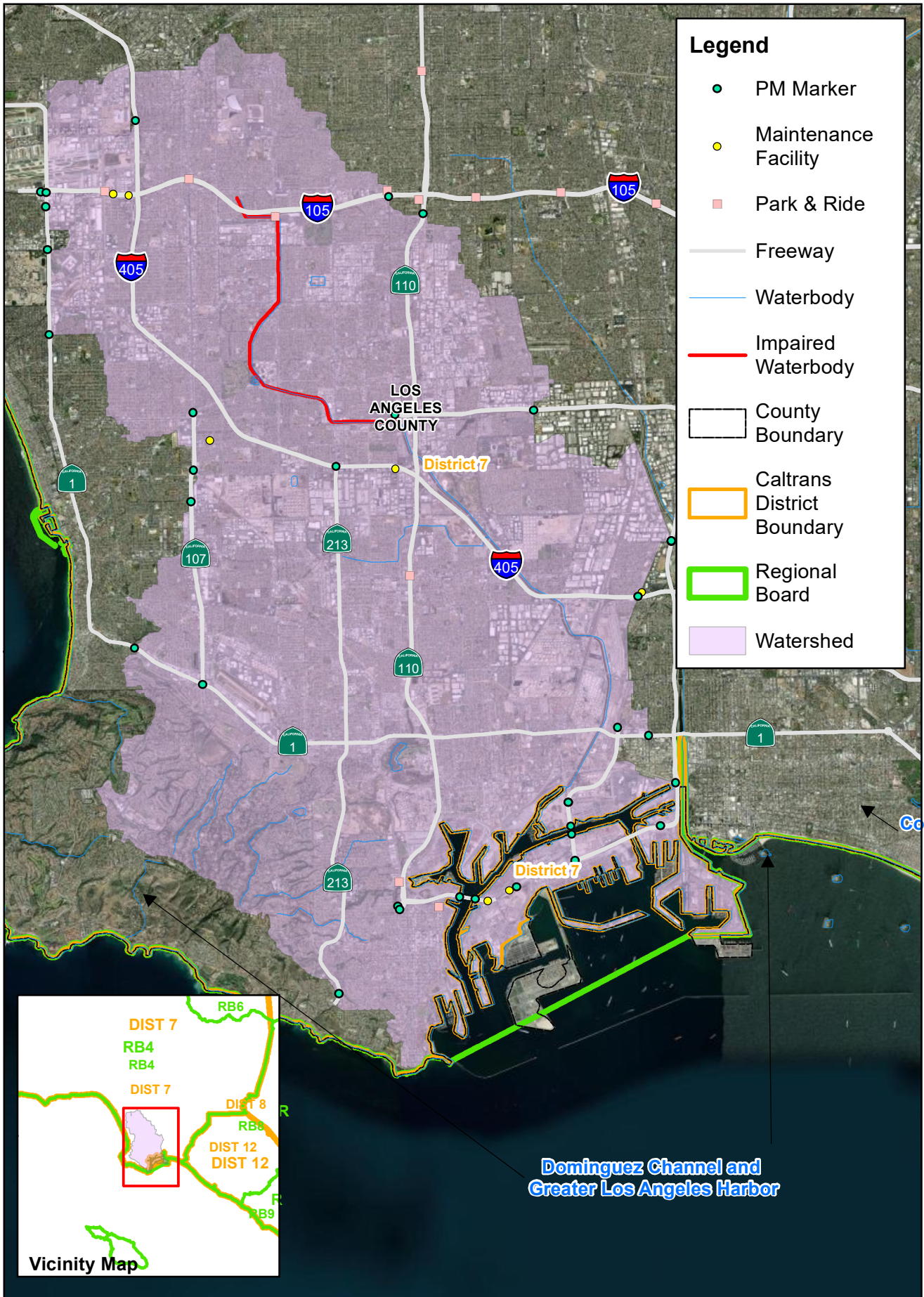




# Colorado Lagoon Watershed

Source: ESRI World Aerial, Caltrans, SWRCB, RWQCB, and California Department of Water Resources. Organochlorine Pesticides, PCBs, Sediment Toxicity, PAHs, and Metals TMDL



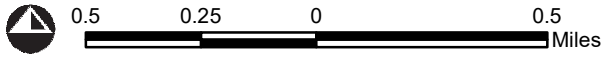
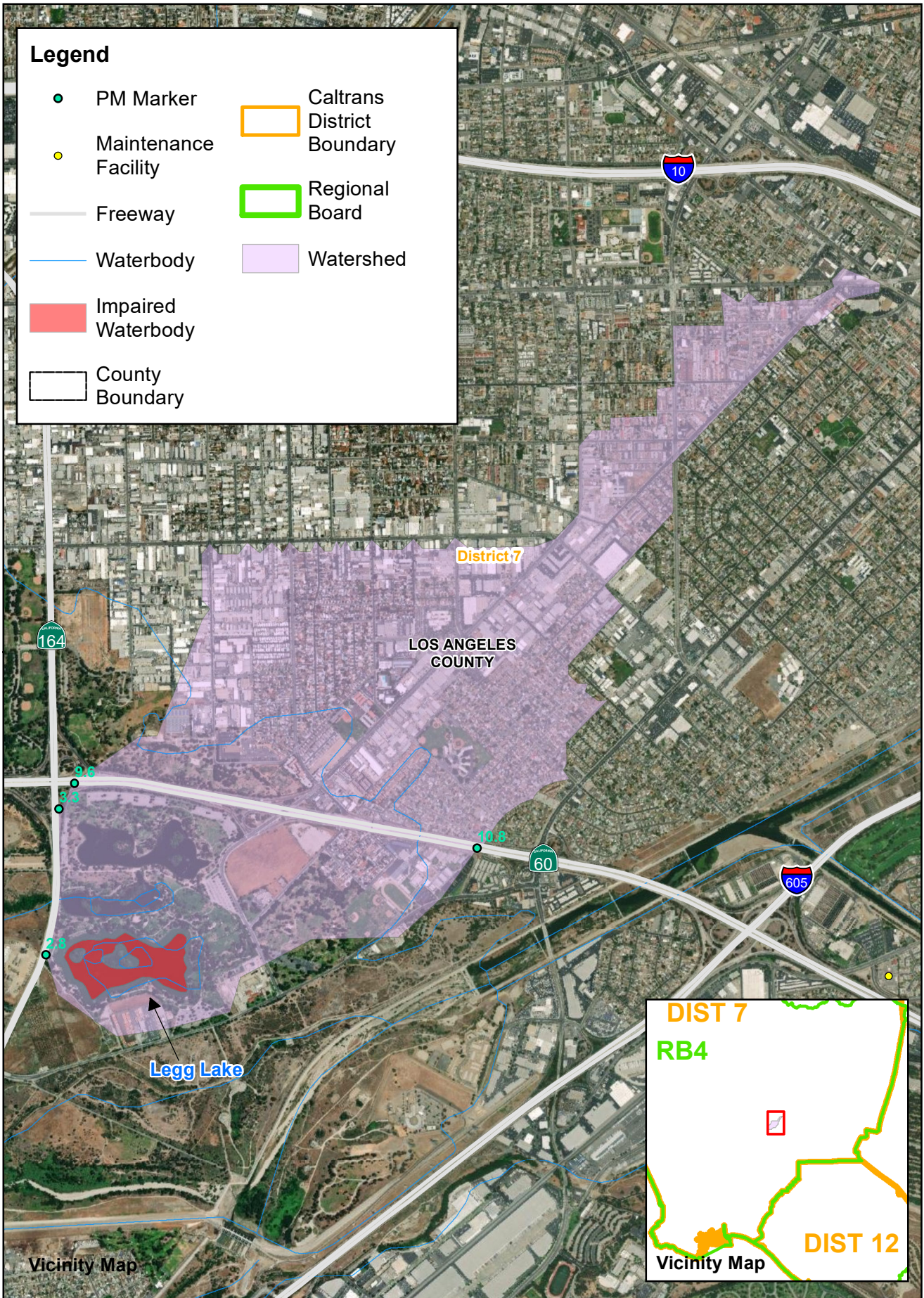


Source: ESRI World Aerial, Caltrans, SWRCB, RWQCB, and California Department of Water Resources.

# Dominguez Channel and Greater Los Angeles Harbor Watershed

Toxic Pollutants TMDL



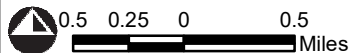
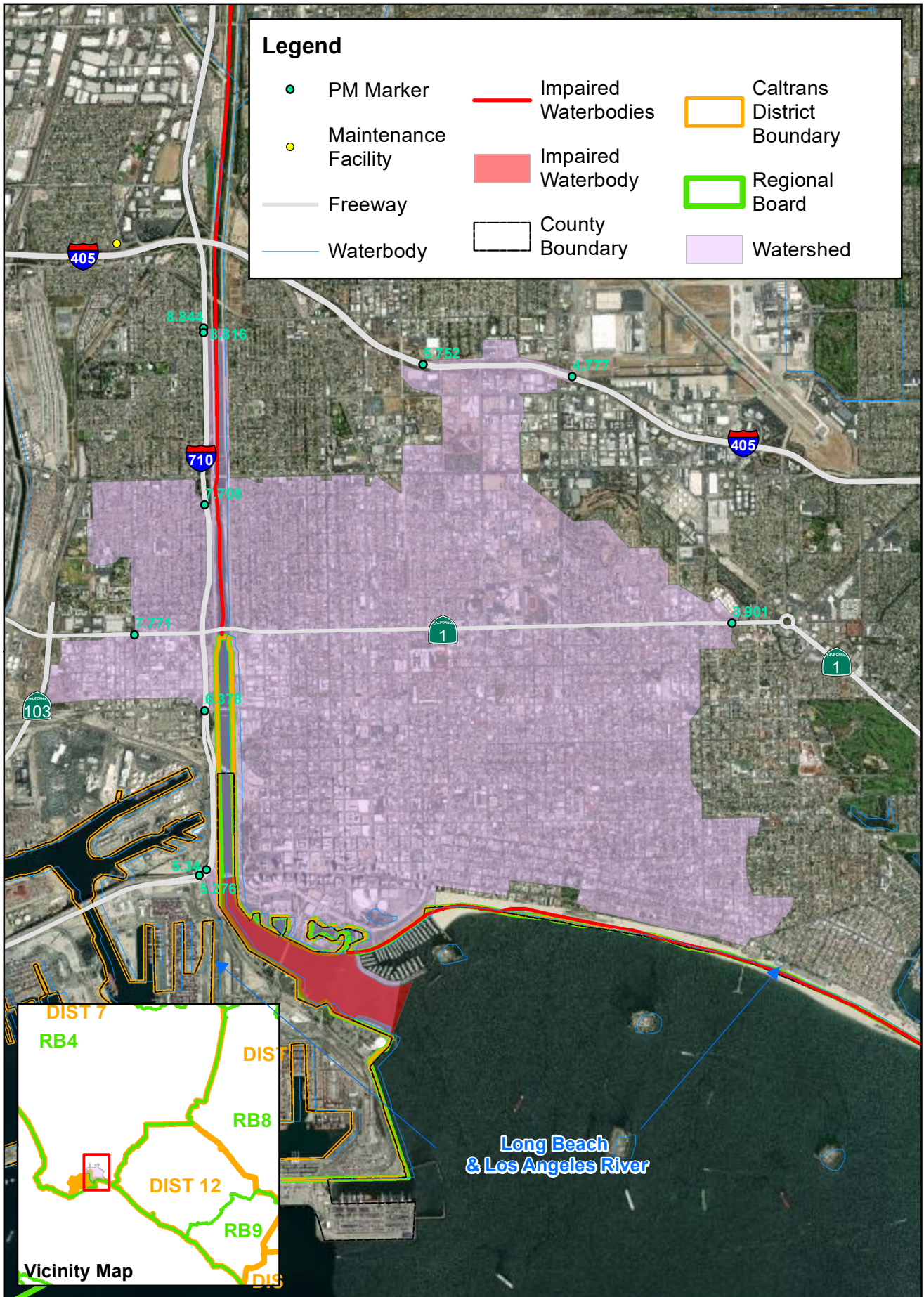


Source: ESRI World Aerial, Caltrans, SWRCB, RWQCB, and California Department of Water Resources.

# Legg Lake Watershed

Trash TMDL



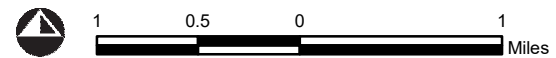
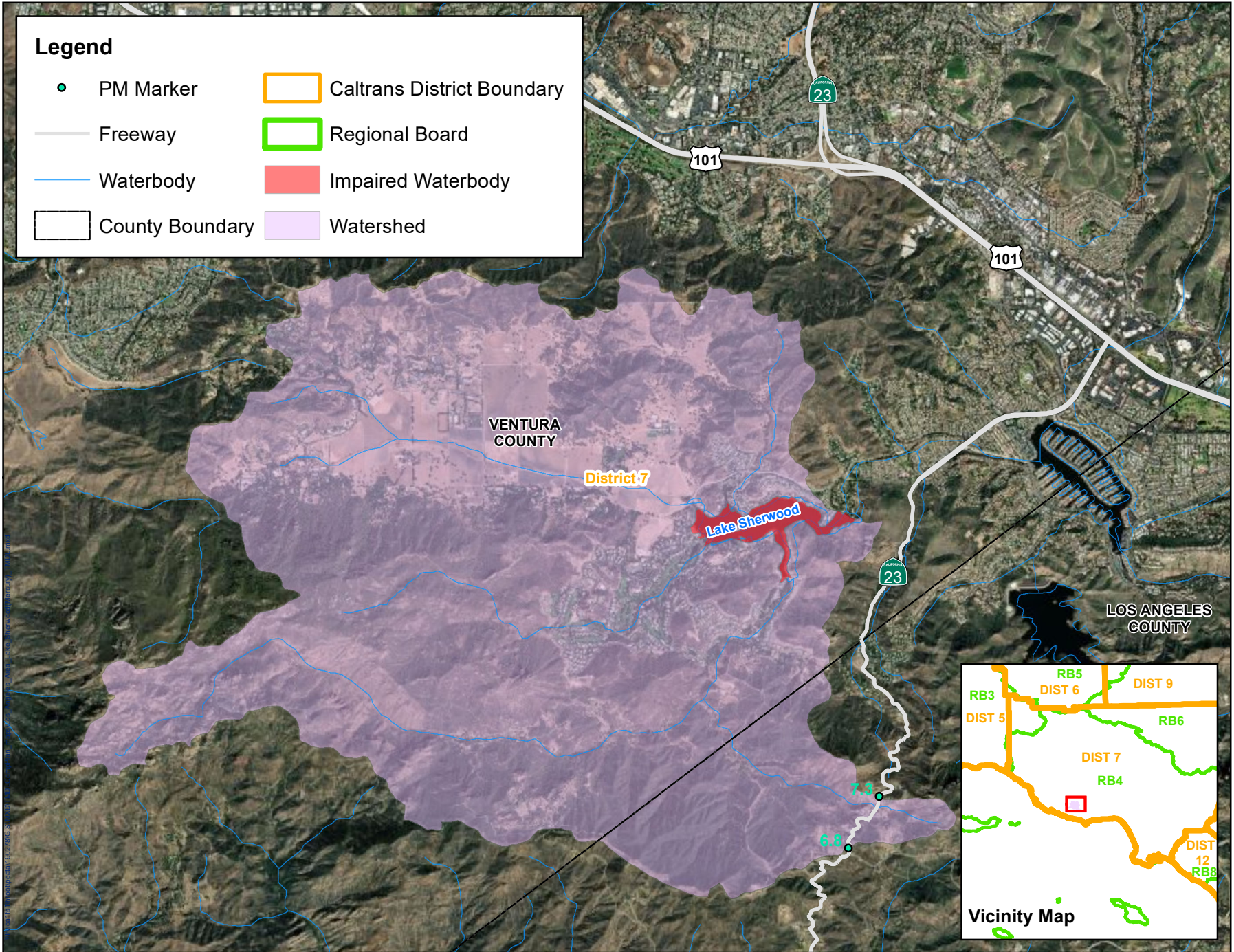


Source: ESRI World Aerial, Caltrans, SWRCB, RWQCB, and California Department of Water Resources.

# Long Beach Beaches & Los Angeles River Watershed

Estuary Indicator Bacteria TMDL



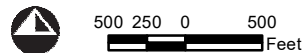
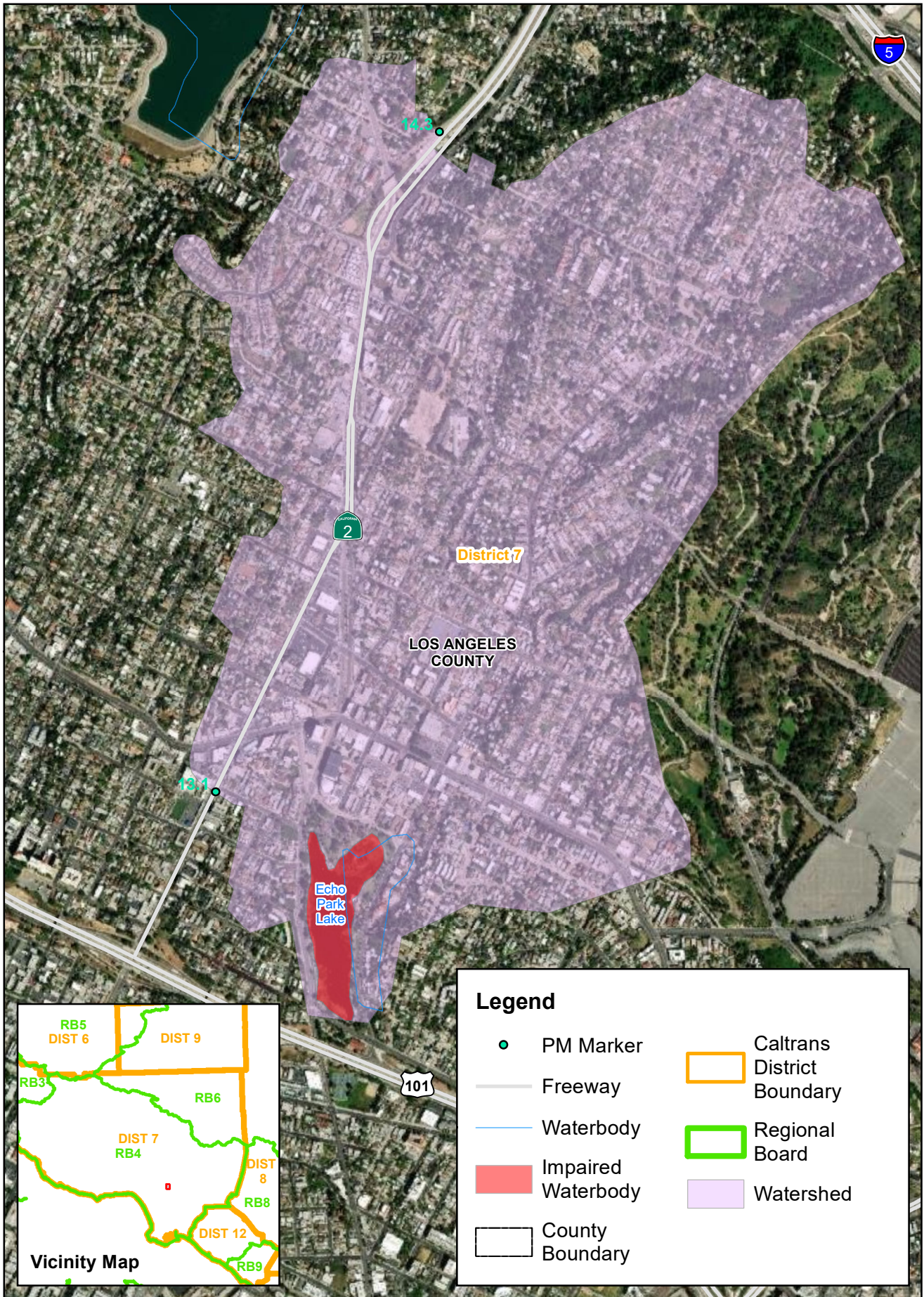


Source: ESRI World Aerial, Caltrans, SWRCB, RWQCB, and California Department of Water Resources.

# Los Angeles Area Lake Sherwood Watershed

Mercury TMDL





Source: ESRI World Aerial, Caltrans, SWRCB, RWQCB, and California Department of Water Resources.

# Los Angeles Area Echo Park Lake

Nitrogen, Phosphorus, Chlordane, Dieldrin, PCBs, and Trash TMDL