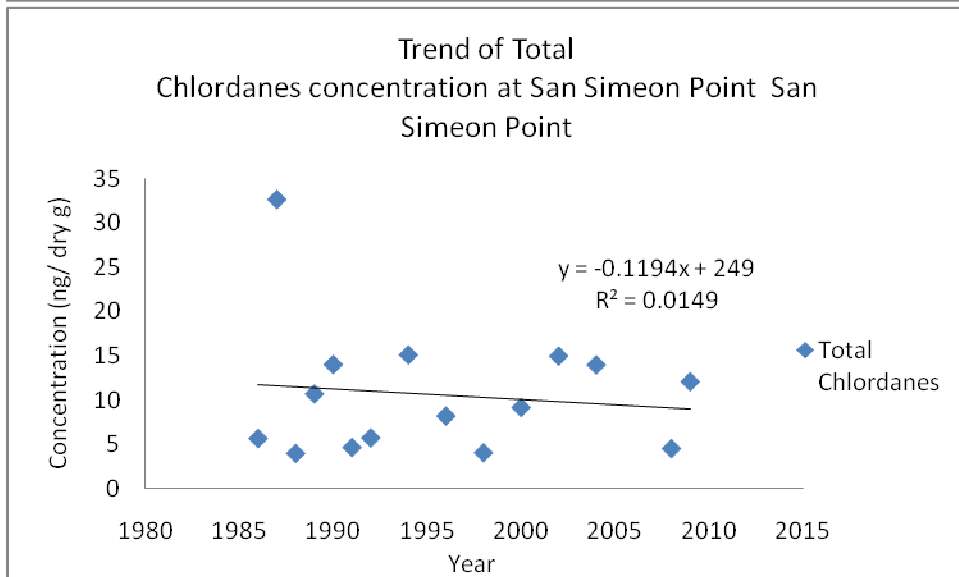
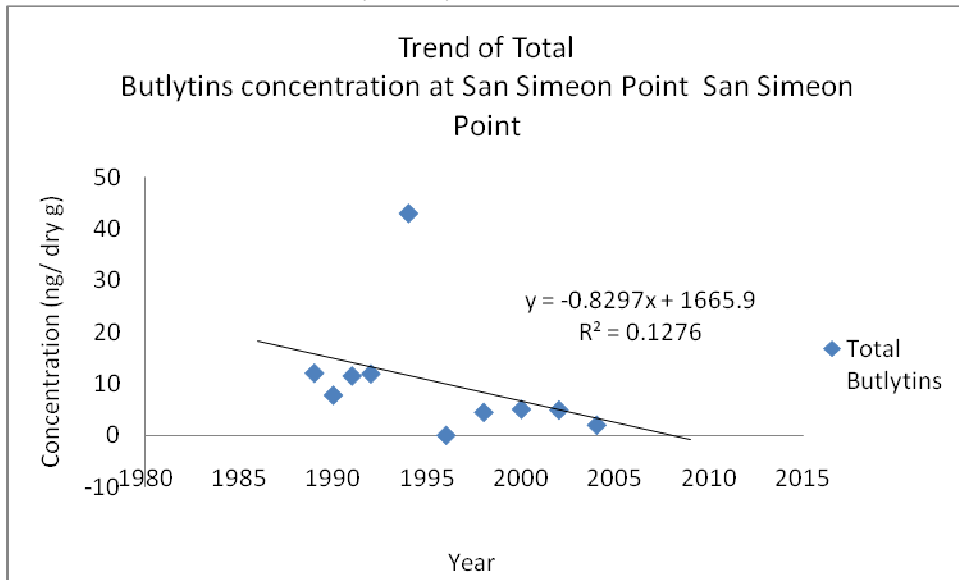


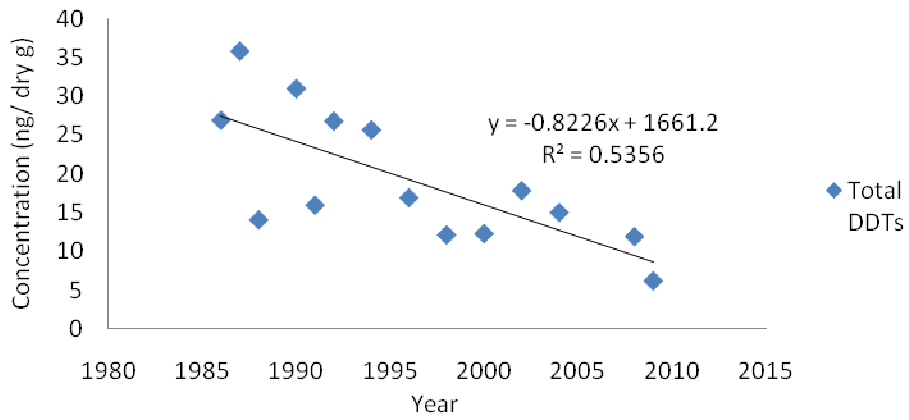
Summary for San Simeon Point San Simeon Point (SSSS)

The following graphs show trends at San Simeon Point San Simeon Point from years 1986-2009 for the following constituents: Butyltin, Chlordane, Total DDT, Dieldrin, Total PAH, PCBs, Zinc (Zn), Silver (Ag), Aluminum (Al), Arsenic (As), Cadmium (Cd) , Chromium (Cr), Copper (Cu), Iron (Fe), Mercury (Hg), Manganese (Mn), Nickel (Ni), Lead (Pb), Selenium (Se), Antimony (Sb), Silicon (Si) and Tin (Sn).

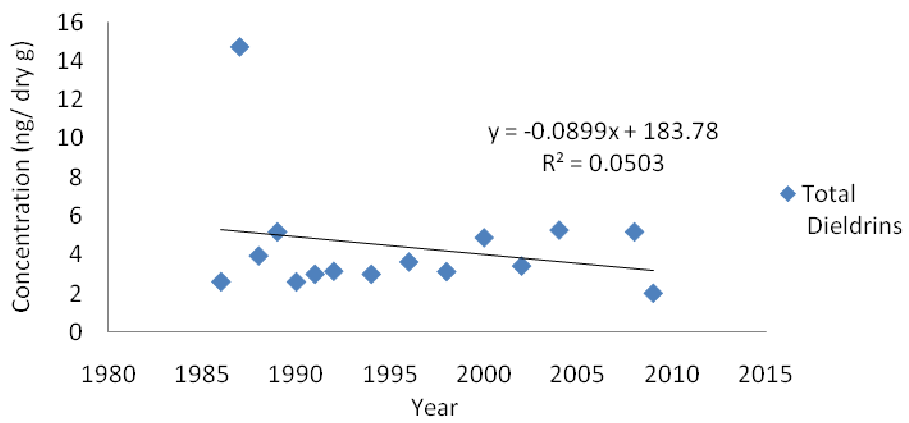
San Simeon Point San Simeon Point (SSSS)

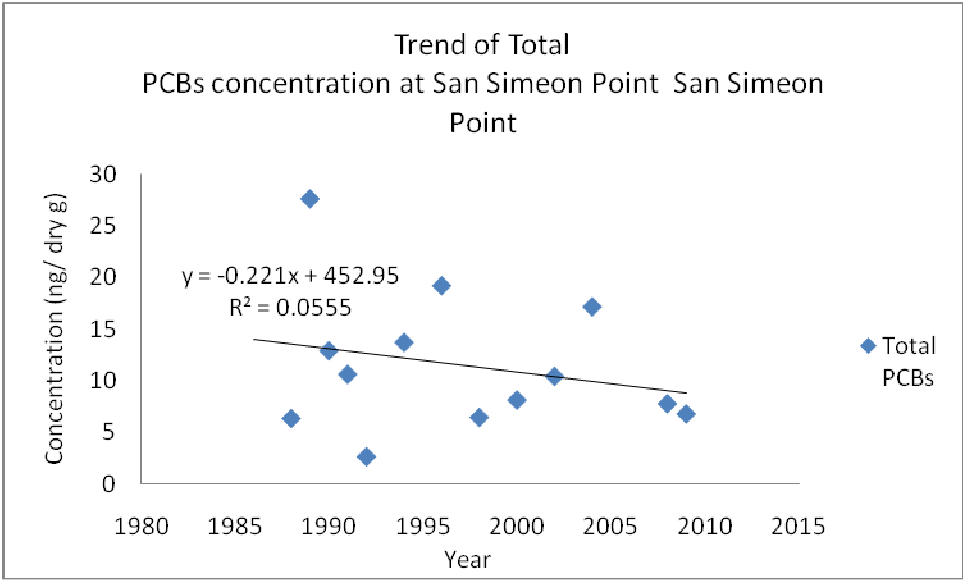
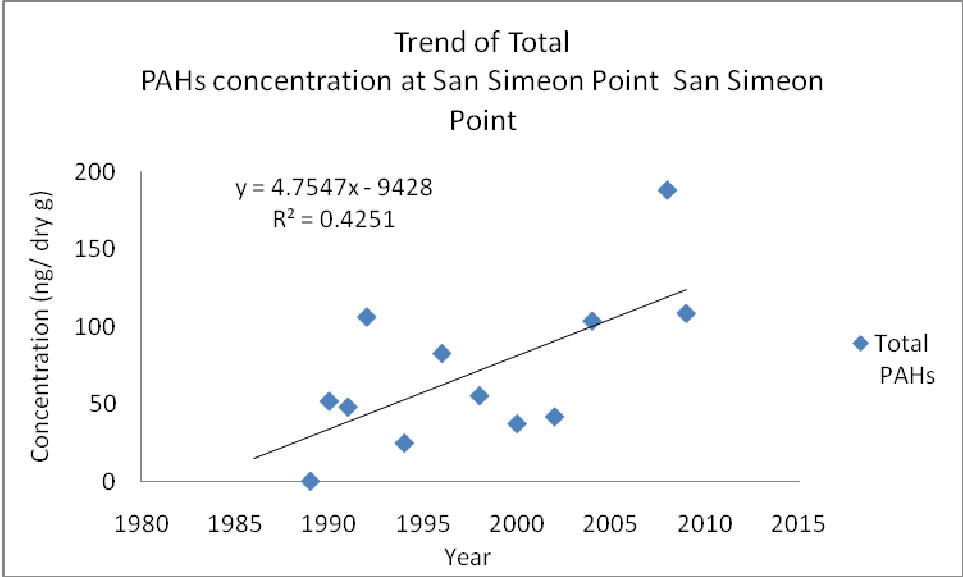


Trend of Total
DDTs concentration at San Simeon Point San Simeon
Point

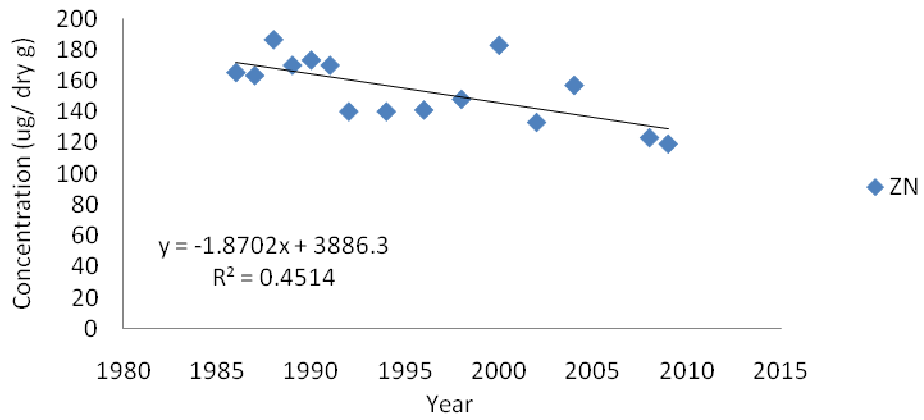


Trend of Total
Dieldrins concentration at San Simeon Point San Simeon
Point

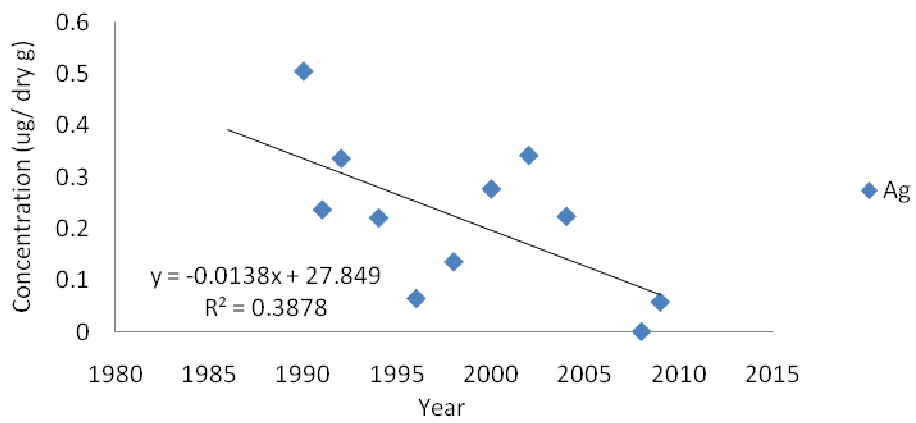




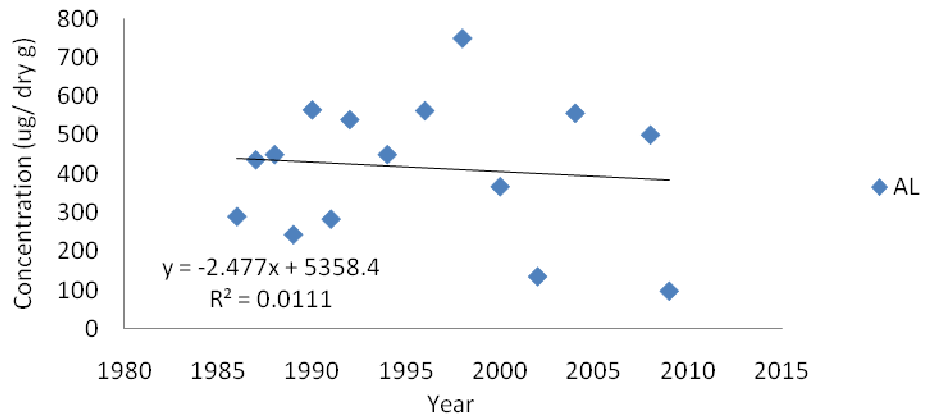
Trend of Zn concentration at San Simeon Point San Simeon Point



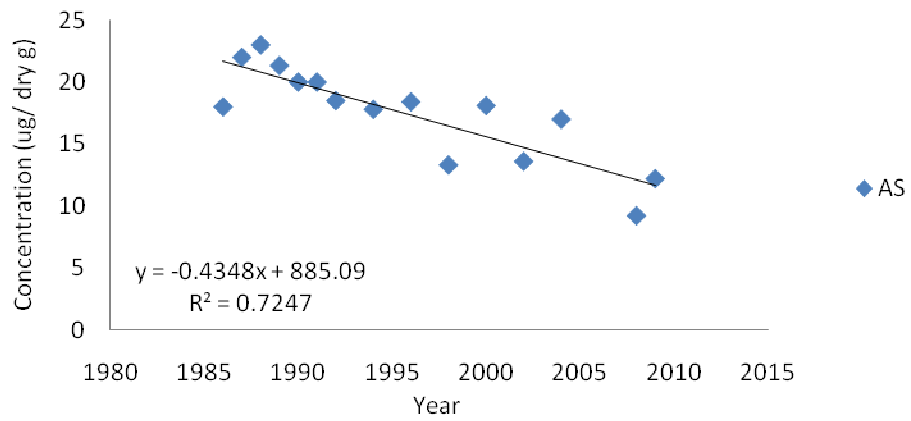
Trend of Ag concentration at San Simeon Point San Simeon Point



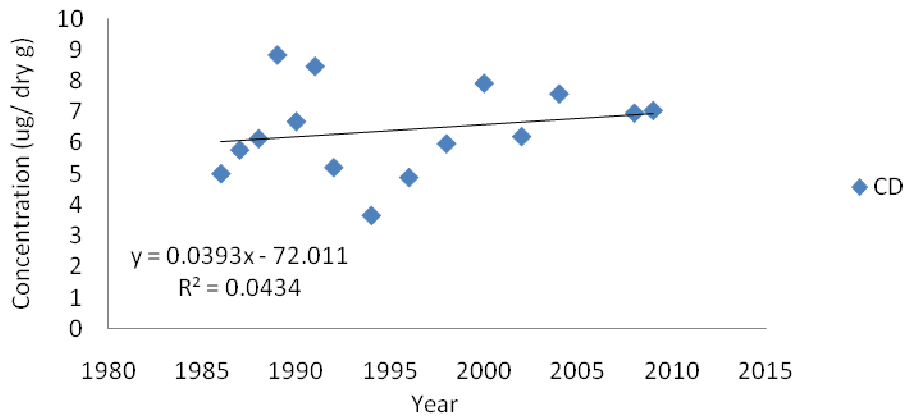
Trend of Al concentration at San Simeon Point San Simeon Point



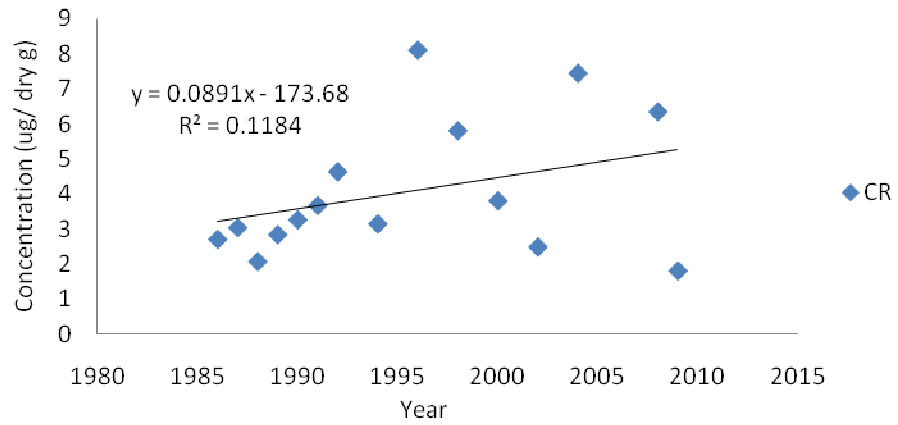
Trend of As concentration at San Simeon Point San Simeon Point



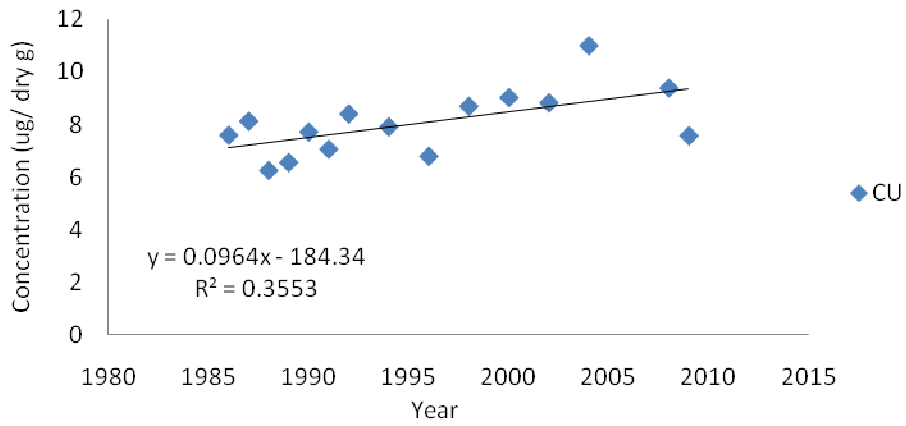
Trend of Cd concentration at San Simeon Point San Simeon Point



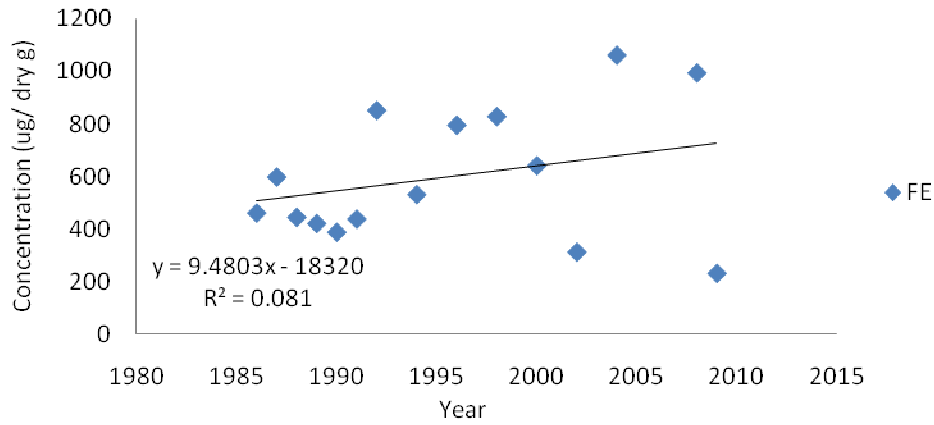
Trend of Cr concentration at San Simeon Point San Simeon Point

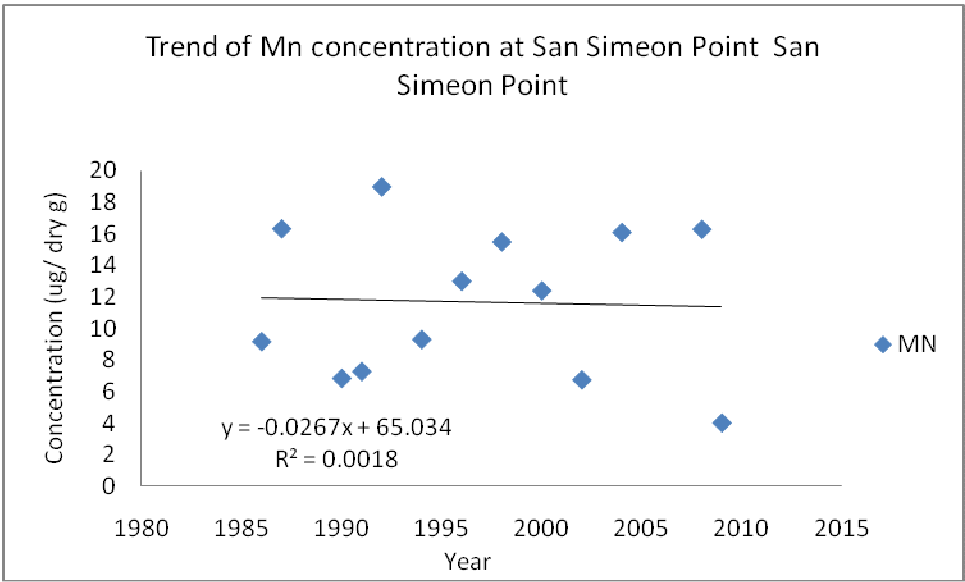
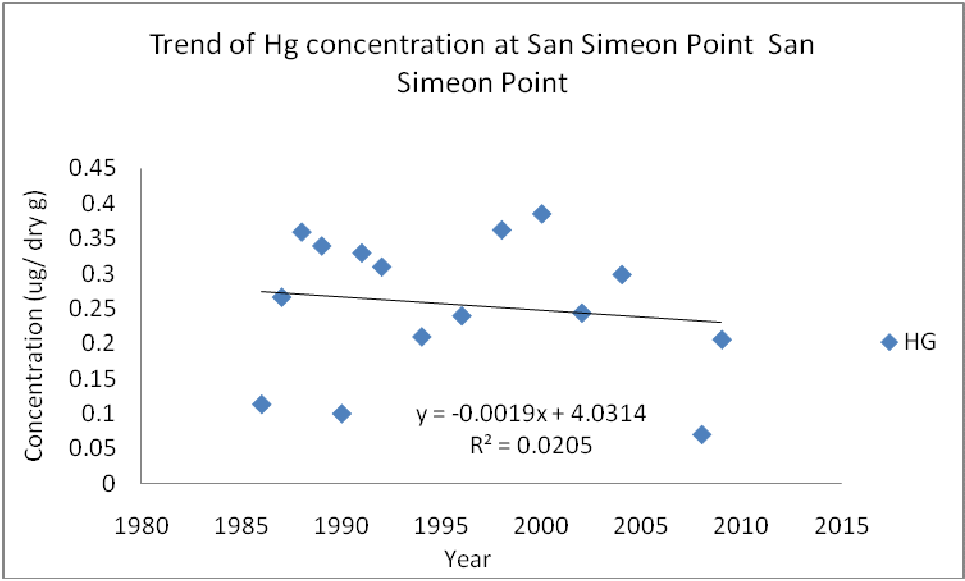


Trend of Cu concentration at San Simeon Point San Simeon Point

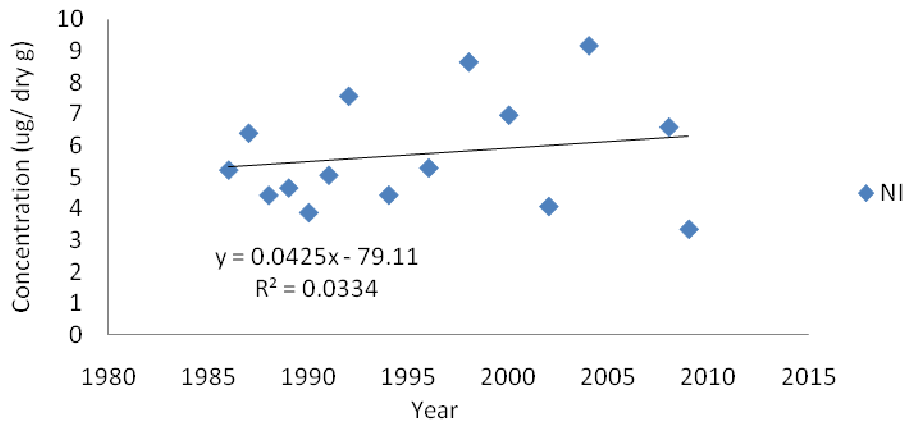


Trend of Fe concentration at San Simeon Point San Simeon Point





Trend of Ni concentration at San Simeon Point San Simeon Point



Trend of Pb concentration at San Simeon Point San Simeon Point

